

O.D.O.T. DISTRICT 2 SURVEY OFFICE (USE ONLY)

PERSONNEL \_\_\_\_\_

REFERENCE NO. 49 G

SHEET 21 OF 49

NOTES HUSS

DATE 3/21/12

ROUTE SR 281

H.C. HUSS

WEATHER CLEAR

COUNTY WOOD

R.C. HARBAUGH

TEMP. 78°

TOWNSHIP MONTGOMERY

SECTION 15

T 4 N R 12 E

TYPE MONUMENT MAG NAIL

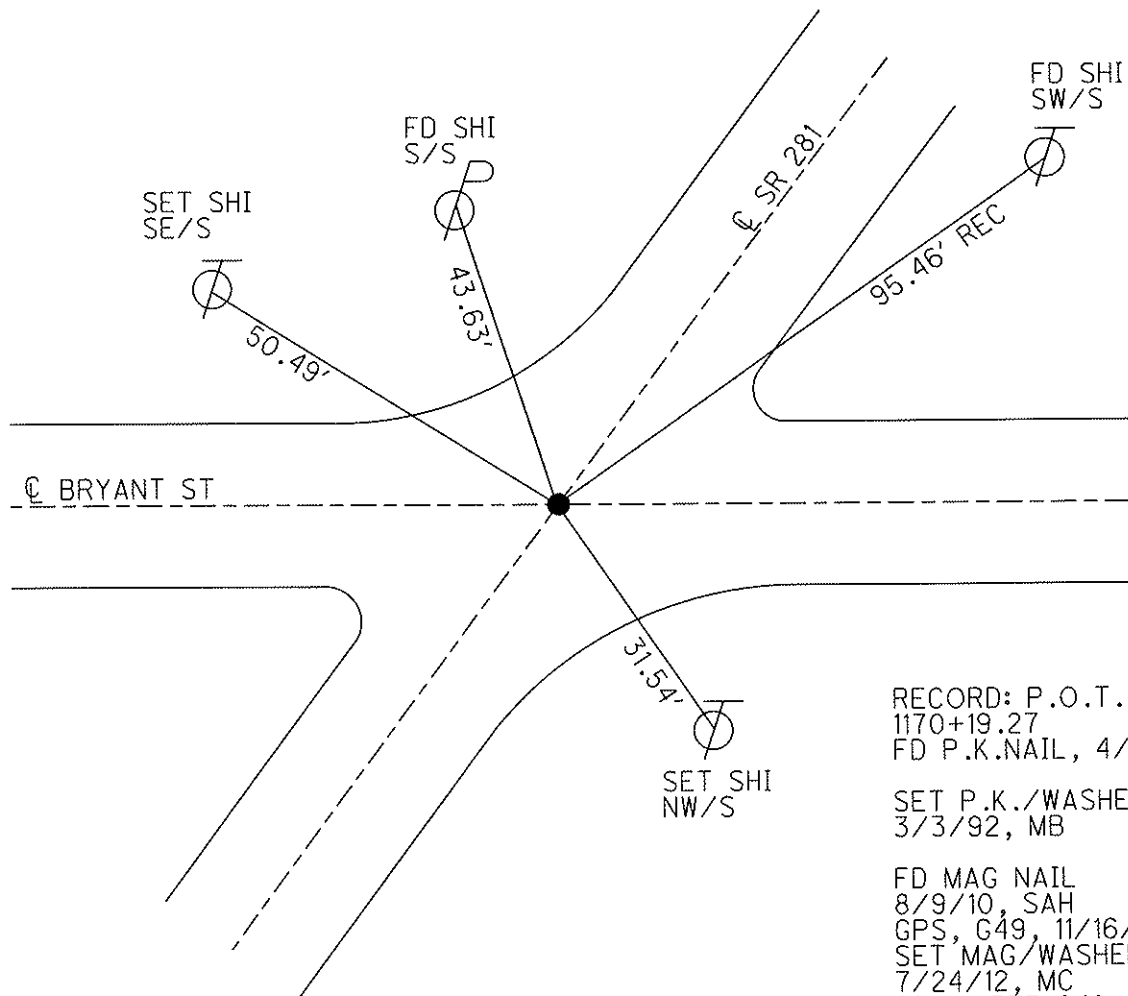
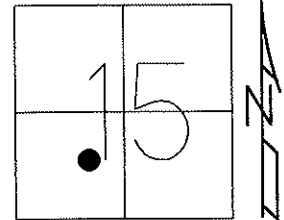
ON SURFACE - BELOW ON

~~LEFT~~ - Q PAV'T - RIGHT 0.2'

- TO - EDGE PAVEMENT

S.L.M. 1170+19.27

Grid: Northing: 597518.402 Easting: 1702151.242



RECORD: P.O.T.  
1170+19.27  
FD P.K.NAIL, 4/17/70

SET P.K./WASHER  
3/3/92, MB

FD MAG NAIL  
8/9/10, SAH  
GPS, G49, 11/16/10  
SET MAG/WASHER  
7/24/12, MC  
FINAL REF G49  
7/30/12, SAH

# O.D.O.T. DISTRICT 2 SURVEY OFFICE

PERSONNEL \_\_\_\_\_

REFERENCE NO. \_\_\_\_\_

SHEET \_\_\_\_\_ OF \_\_\_\_\_

NOTES LOEHRKE

H.C. VAN DUSEN

R.C. KUSZ

BARNHISEL

DATE 7-31-91

WEATHER Clear

TEMP. +80°

ROUTE SR. 281

COUNTY WOOD

TOWNSHIP MONTGOMERY

SECTION 15

T 4 N R 12 E

49-G

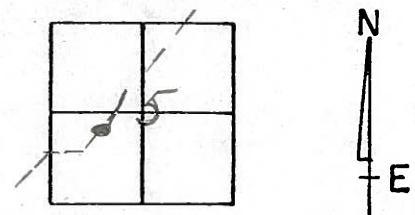
TYPE MONUMENT P.K. & WASHER

ON SURFACE - BELOW YES

LEFT - & PAV'T. - RIGHT OF BOTH ROADS

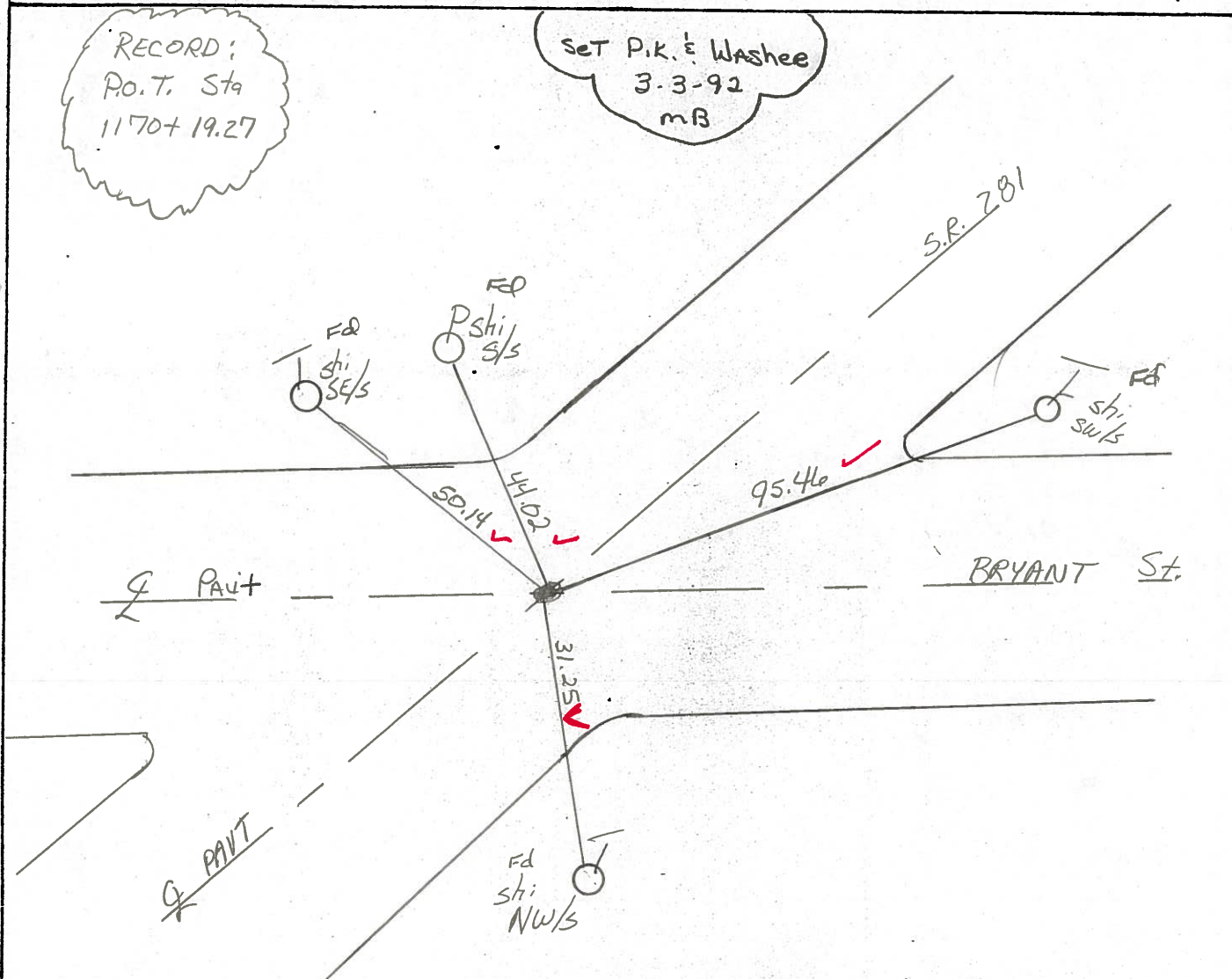
TO EDGE PAVEMENT

S.L.M. 1169+95



RECORD;  
P.O.T. Sta  
1170+19.27

Set P.K. & Washer  
3-3-92  
mB



Preventive Maintenance  
Chip & Seal 2000  
Existing Point Uncovered  
Date 11-9-00

Q.D.O.T. DISTRICT 2 SURVEY OFFICE

SHEET \_\_\_\_\_ OF \_\_\_\_\_

County Wood S.R. 281

Date 12-20-83

Township Montgomery

Weather clear

Section 15

Temp. +15°

T4N, R12E

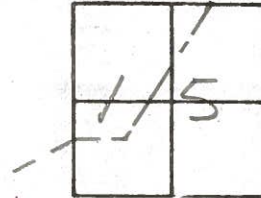
Personnel HOFFMAN

LOENRKE H.C.

HOUSEHOLDER R.C.

BAENTHSEL

49-6



Fd. SHANK of P.K. @ SURFACE  
on E of BOTH PAUTS

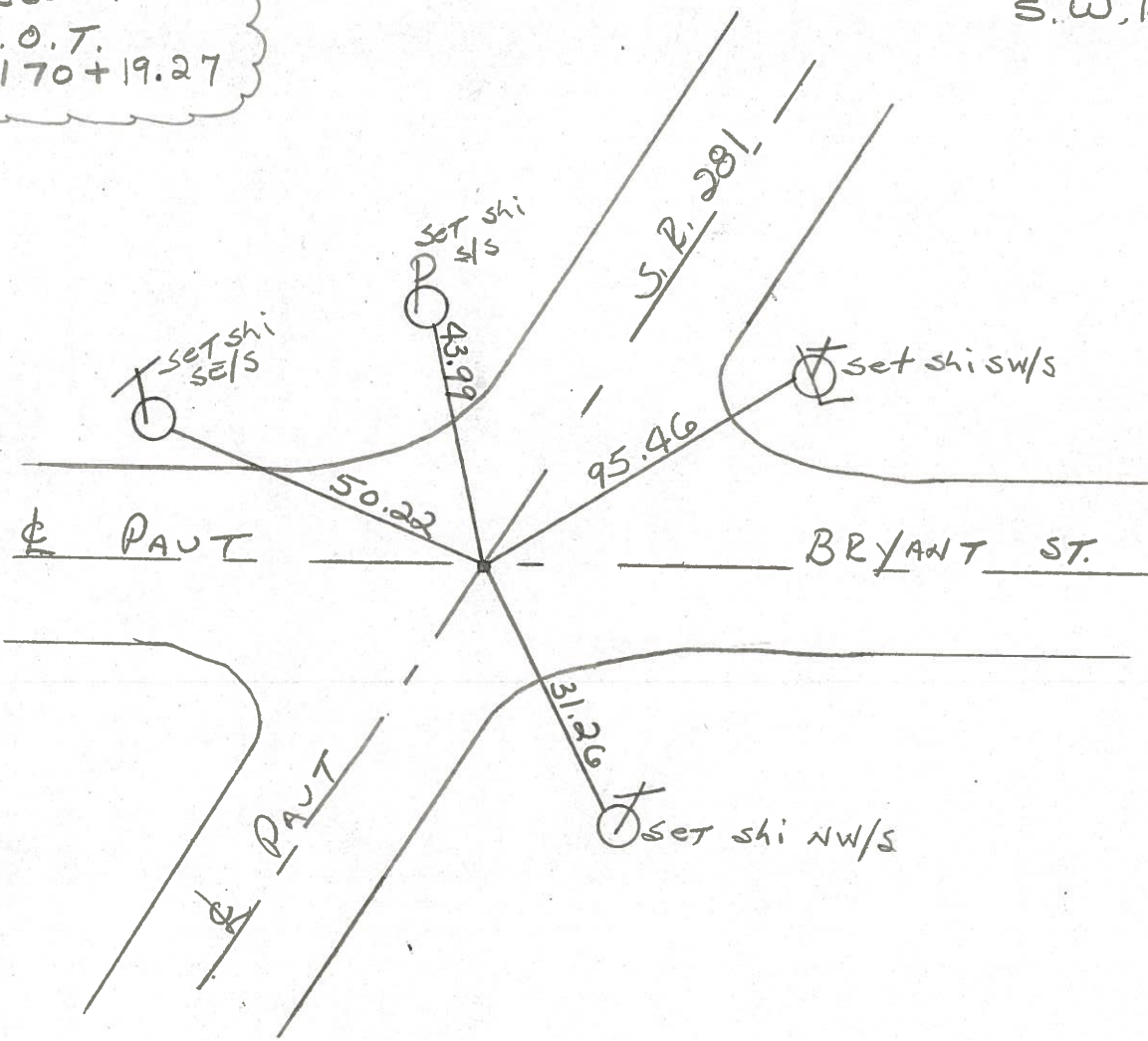
S.L.M. 1169 + 95

Set PK/Washer

8-15-84

S.W.H.

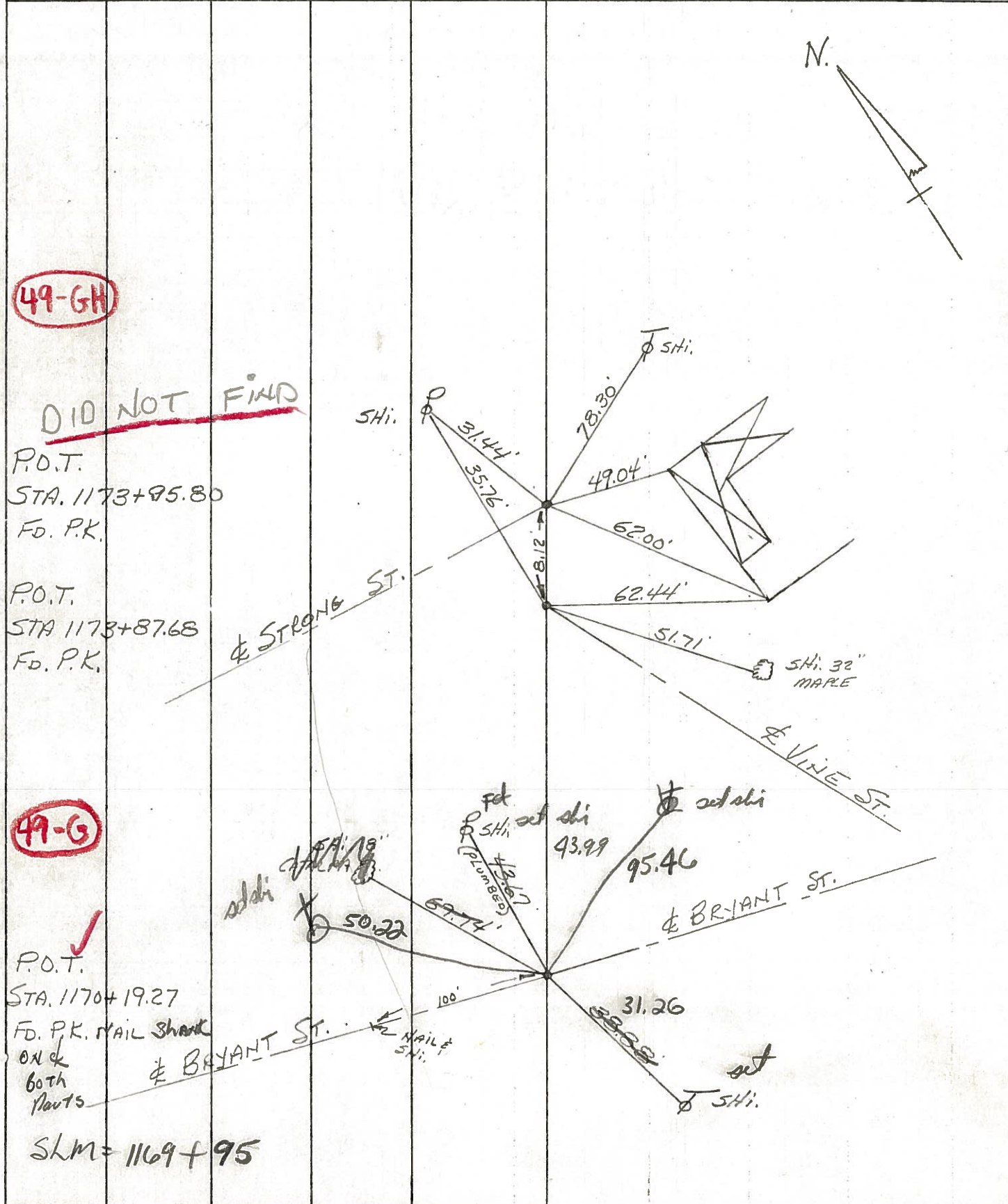
Record:  
P.O.T.  
1170 + 19.27





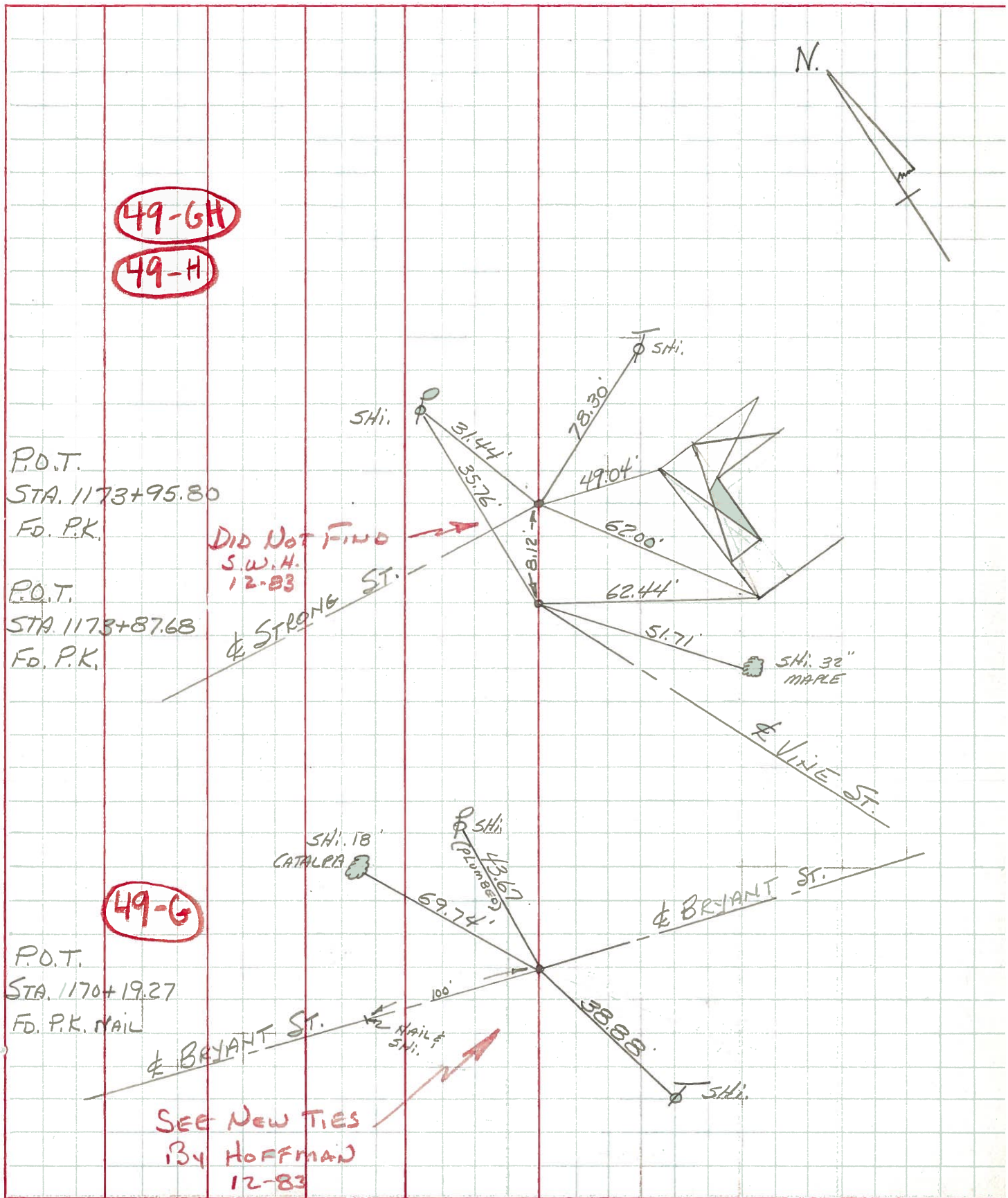
PERSONNEL	TITLE	PERSONNEL	TITLE	COUNTY	<u>WOOD</u>	DATE	<u>4-17-70</u>
<u>BURNSIDE</u>				S. R.	<u>#281</u>	WEATHER	<u>CLEAR</u>
<u>SMITH</u>				SEC.		TEMP.	<u>+65°</u>
<u>HOFFMAN</u>							

DESCRIPTION CONTROL TIES JOB NO.



PERSONNEL	TITLE	PERSONNEL	TITLE	COUNTY	DATE	WEATHER	TEMP.
BURNSIDE				Wood	4-17-70	CLEAR	+65°
SMITH				#281			
HOFFMAN							

DESCRIPTION	LEFT	CENTER LINE	RIGHT	JOB NO.
CONTROL TIES				



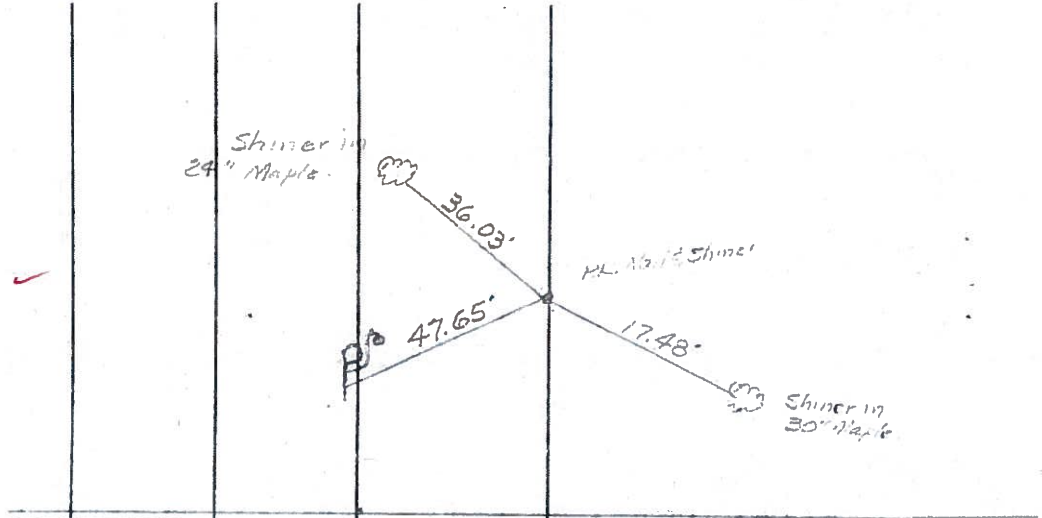


PERSONNEL	TITLE	PERSONNEL	TITLE	COUNTY	DATE	WEATHER	TEMP.
Morrison		Waddington		Wood	Dec. 7, 196	Clear	+ 35°
Bowers				S. R. #281			
Holcombe				SEC. 22.01			
Curry							

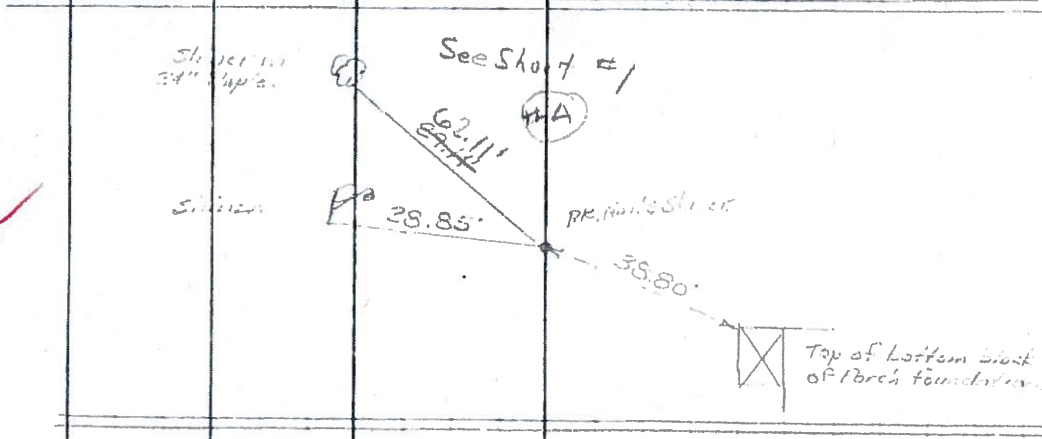
DESCRIPTION Ties to Control points & points on line. JOB NO. \_\_\_\_\_

**49-G**

Point on line Sta. 1170+19.27 ✓

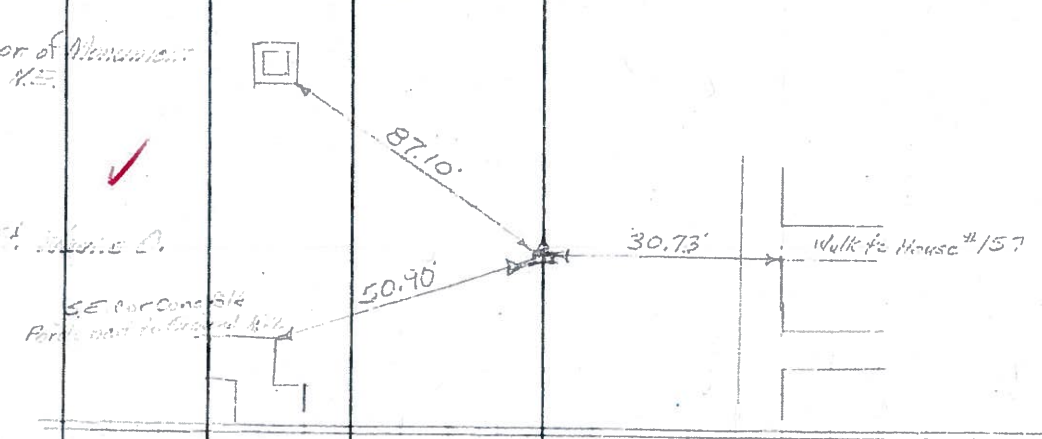


Point on line Sta. 1166+16.59 ✓



**49-E**

Ch. 1 E. from St. John's O. Sta. 1162+13.80. ✓



**49-D**

Intersection of Center of Streets from O. Sta. 1155+38.83 ✓

