

O.D.O.T. DISTRICT 2 SURVEY OFFICE (USE ONLY)

PERSONNEL

REFERENCE NO. 49 J

SHEET 25 OF 49

NOTES HUSS

DATE 3/21/12

ROUTE SR 281

H.C. HUSS

WEATHER CLEAR

COUNTY WOOD

R.C. HARBAUGH

TEMP. 80°

TOWNSHIP MONTGOMERY

SECTION 15

T 4 N R 12 E

TYPE MONUMENT MON.BOX

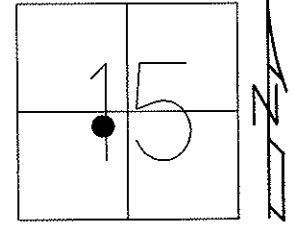
ON SURFACE - ~~BELOW~~ ON

LEFT - Q PAV'T - RIGHT ON

13.9' TO RT EDGE PAVEMENT

S.L.M. 1180+08

Grid: Northing: 598321.959 Easting: 1702769.281

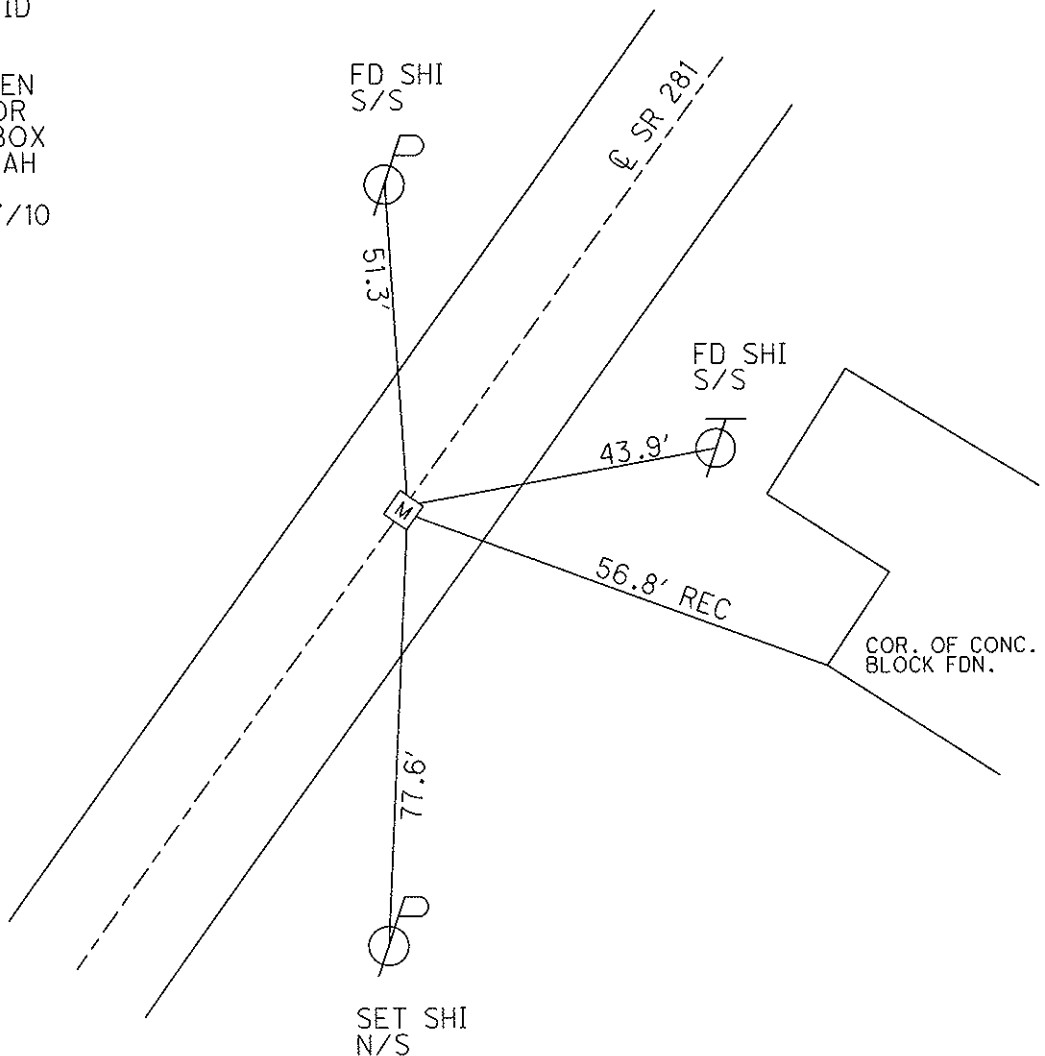


DID NOT OPEN
USED CTR.OF LID
7/31/91, MB

COULD NOT OPEN
USED MARKS FOR
CTR. OF MON.BOX
LID. 8/9/10, SAH

GPS, J49, 11/17/10

FINAL REF J49
7/30/12, SAH



O.D.O.T. DISTRICT 2 SURVEY OFFICE

PERSONNEL _____ REFERENCE NO. _____ SHEET _____ OF _____

NOTES LOEHRKE

H.C. VAN DUSEN

R.C. KUSZ

BARNHISEL

DATE 7-31-91

WEATHER clear

TEMP. +80°

ROUTE S.R. 281

COUNTY WOOD

TOWNSHIP MONTGOMERY

SECTION 15

T 4 N R 12 E

TYPE MONUMENT Mon. Box

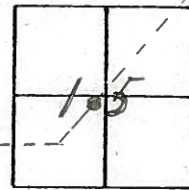
ON SURFACE - BELOW YES

LEFT- & PAV'T. - RIGHT YES

13.9 TO RT EDGE PAVEMENT CURB.

S.L.M. 1180+08

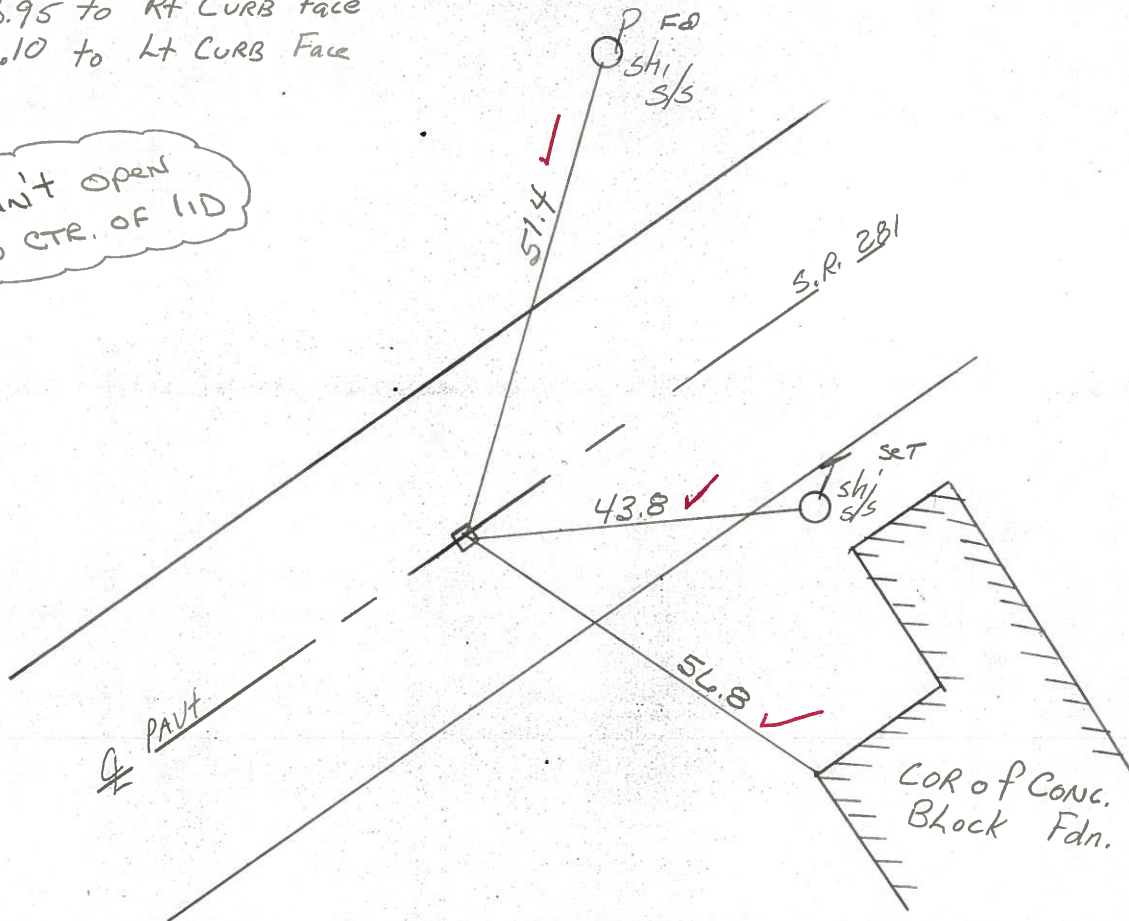
49-J



13.95 to Rt CURB Face

14.10 to Lt CURB Face

Didn't open
USED CTR. OF I/D



Preventive Maintenance
Chip & Seal 2000
Existing Point Uncovered
Date 11-9-00

ODOT. DISTRICT 2 SURVEY OFFICE

SHEET _____ OF _____

County Wood S.R. 281

Date 12-20-83

Township MONTGOMERY

Weather CLEAR

Section 15

Temp. +15°

T4N, R12E

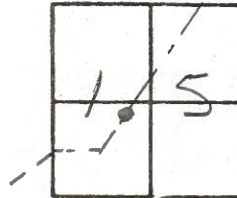
Personnel HOFFMAN

LOERKE H.C.

HOUSEHOLDER R.C.

BARNHISEL

49-J



Fd MONT. BOX / NOTCHES ON RIM; MADE "+" ON TOP
 Ref. to "+"

S.L.M. 1180+08

ON & PAUT.

13.95 TO RT. CURB FACE

14.10 TO LT. CURB FACE

