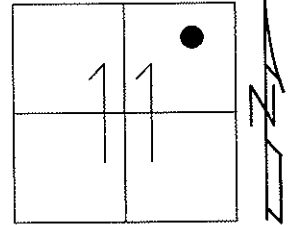


O.D.O.T. DISTRICT 2 SURVEY OFFICE (USE ONLY)

PERSONNEL \_\_\_\_\_ REFERENCE NO. 52 SHEET 39 OF 49  
 NOTES HUSS DATE 4/2/12 ROUTE SR 281  
 H.C. CANTERBURY WEATHER CLOUDY COUNTY WOOD  
 R.C. HARBAUGH TEMP. 58° TOWNSHIP MONTGOMERY  
 \_\_\_\_\_ SECTION 11  
 \_\_\_\_\_ T 4 N R 12 E

TYPE MONUMENT MONBOX  
 ON SURFACE - ~~BELOW~~ ON  
 LEFT - ☉ PAV'T - RIGHT ON  
- TO - EDGE PAVEMENT  
 S.L.M. 1274+89  
 Grid: Northing: 604799.744 Easting: 1709684.849



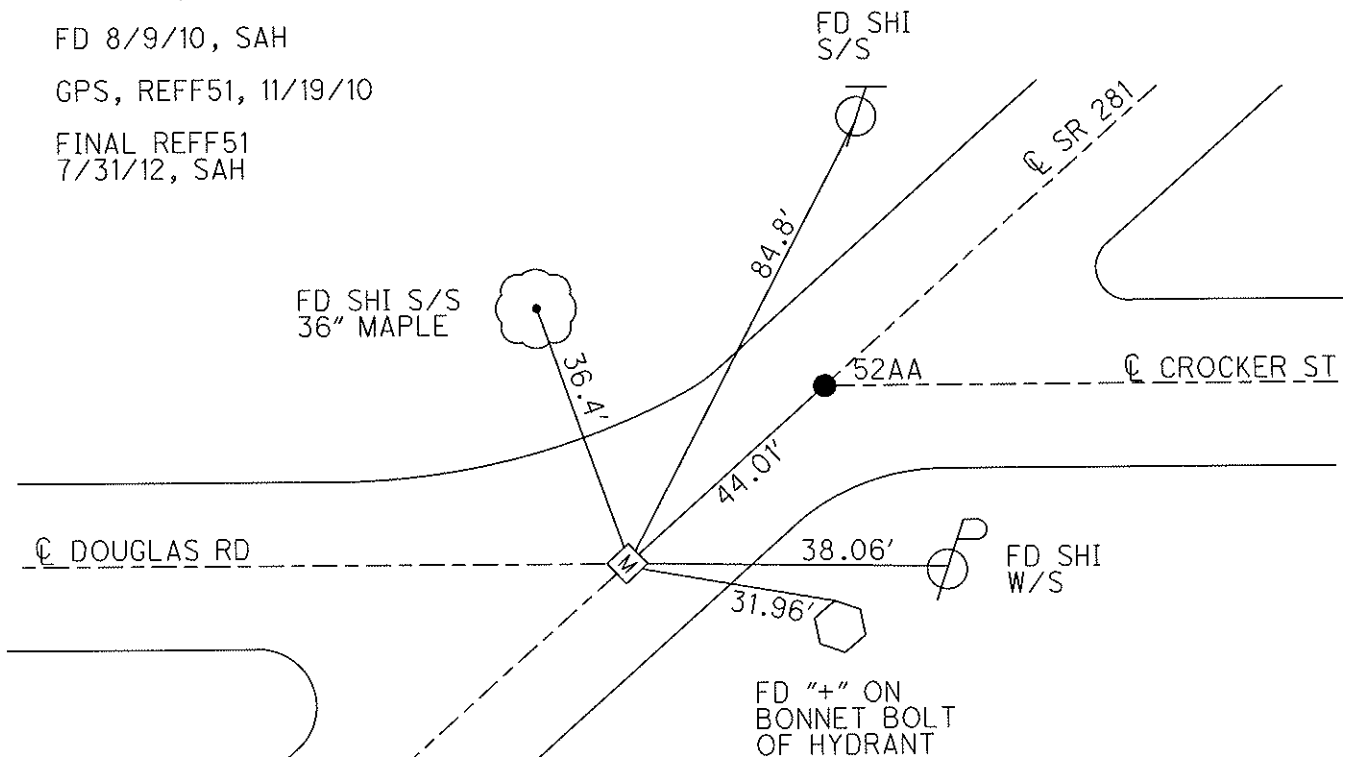
RECORD P.I.  
 STA.1275+17.70

DID NOT OPEN  
 7/30/91, MB

FD 8/9/10, SAH

GPS, REFF51, 11/19/10

FINAL REFF51  
 7/31/12, SAH



# O.D.O.T. DISTRICT 2 SURVEY OFFICE

PERSONNEL

REFERENCE NO. 52

SHEET \_\_\_\_\_ OF \_\_\_\_\_

NOTES LOEHRKE

H.C. VAN DUSEN

DATE 7-30-91

ROUTE S.R. 281

R.C. KUSZ

WEATHER CLEAR

COUNTY WOOD

BARNHISEL

TEMP. +80°

TOWNSHIP MONTGOMERY

SECTION 11

T 4 N R 12 E

TYPE MONUMENT "A" Mon. Box "B" P.K. WASHER

ON SURFACE - BELOW YES YES

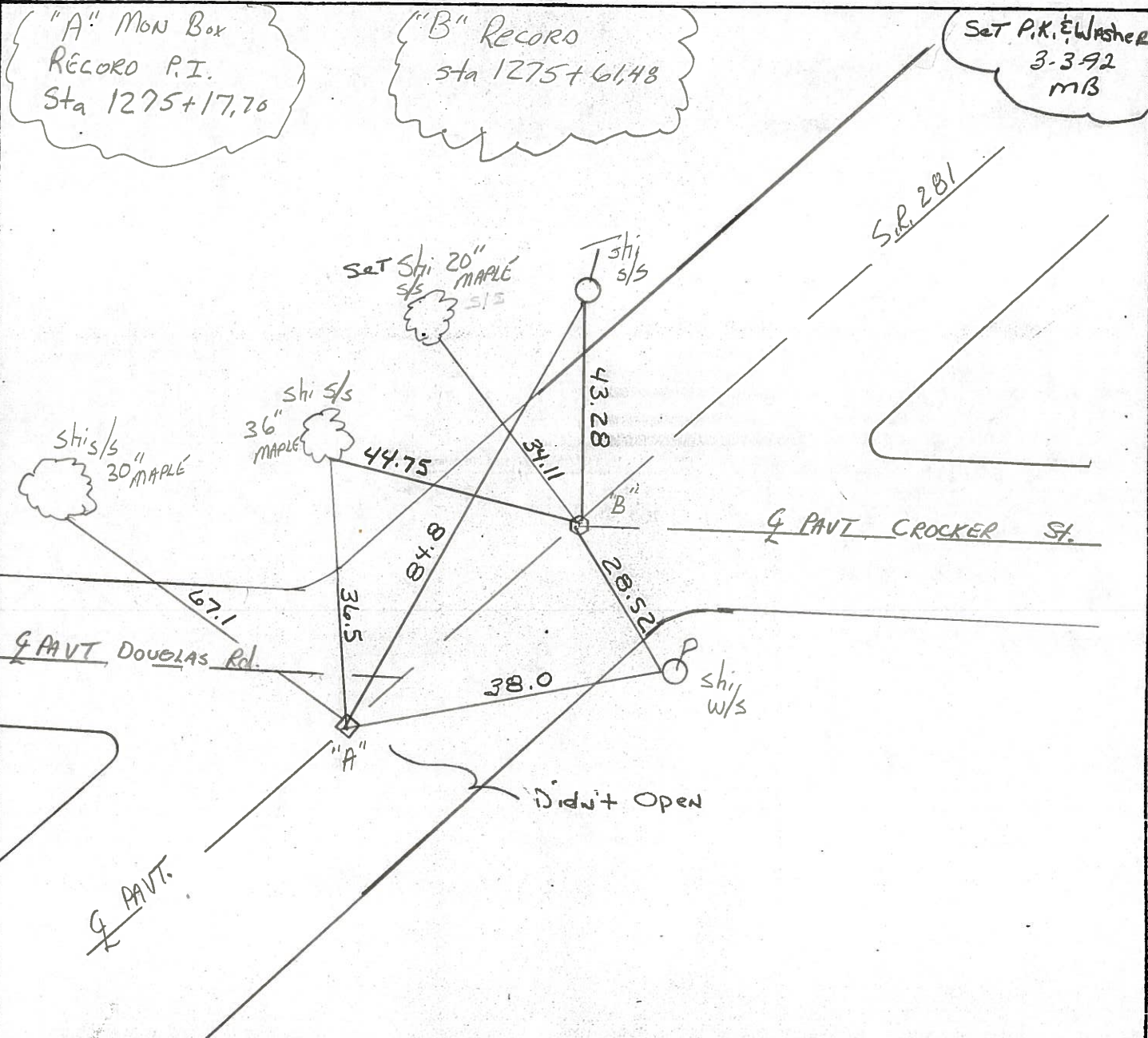
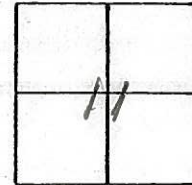
LEFT - & PAV'T. - RIGHT YES YES

- TO - EDGE PAVEMENT

S.L.M. 1274+89 "Mon Box"

**52**

**52-AA**

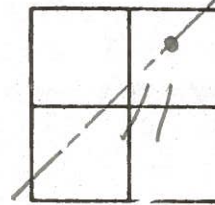


County Wood S.R. 281  
 Township MONTGOMERY  
 Section 11 IN BRADNER  
 T4N, R12E

Date 1-17-84  
 Weather P. Clear  
 Temp. 20°

Personnel HOFFMAN  
LOSHKLE  
HOUSEHOLDER R.C.  
BARNHISEL H.C.

#52  
 52-AA



PT. "A" Fd. MON. BOX @ SURFACE ON & PAUT SR 281  
 "+" ON TOP REF.

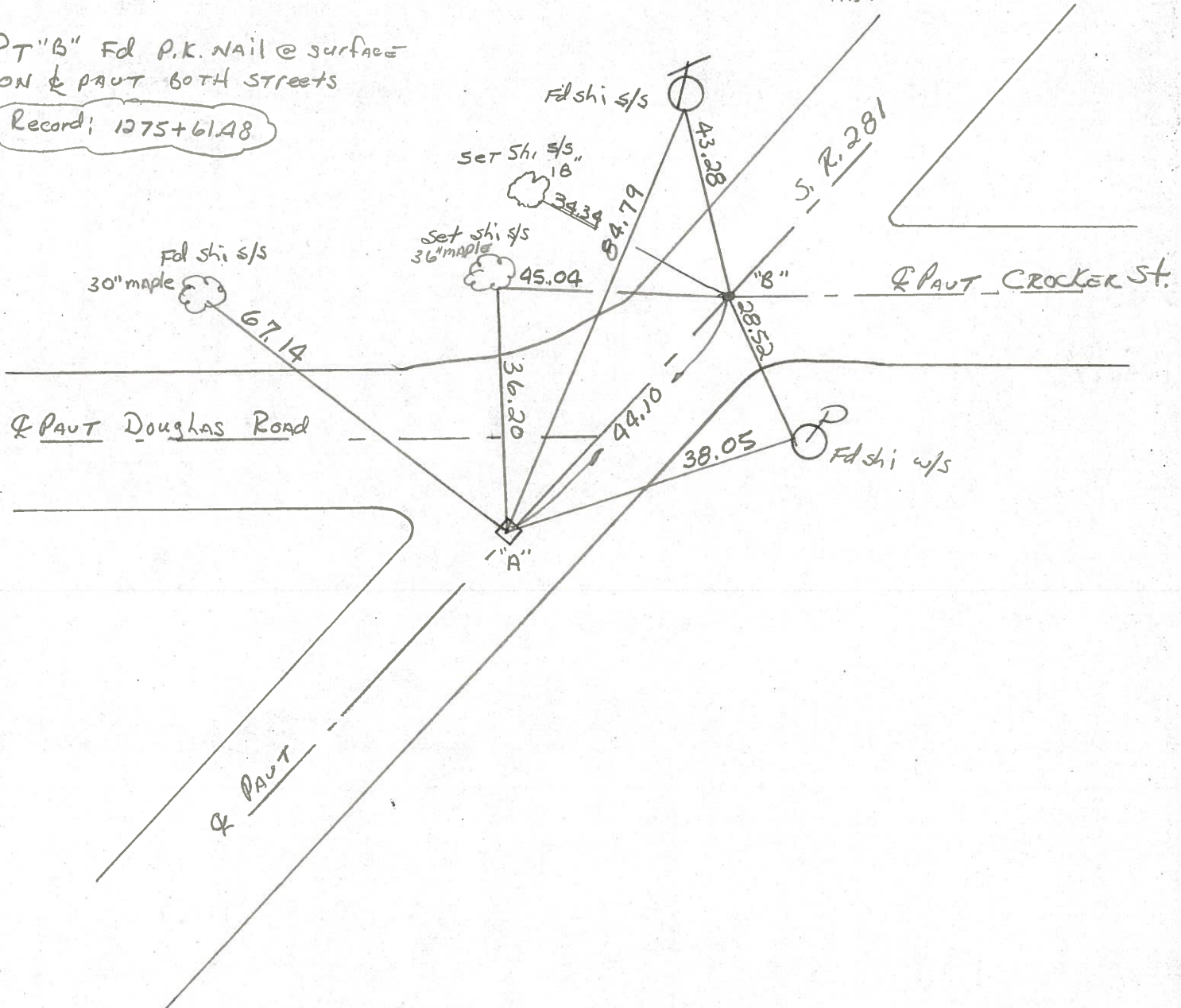
S.L.M. 1274+89

Set P.K./Washer  
 8-20-84  
 S.W.H.

Record: P.I. 1275+17.70

PT. "B" Fd. P.K. NAIL @ SURFACE  
 ON & PAUT BOTH STREETS

Record: 1275+61.48

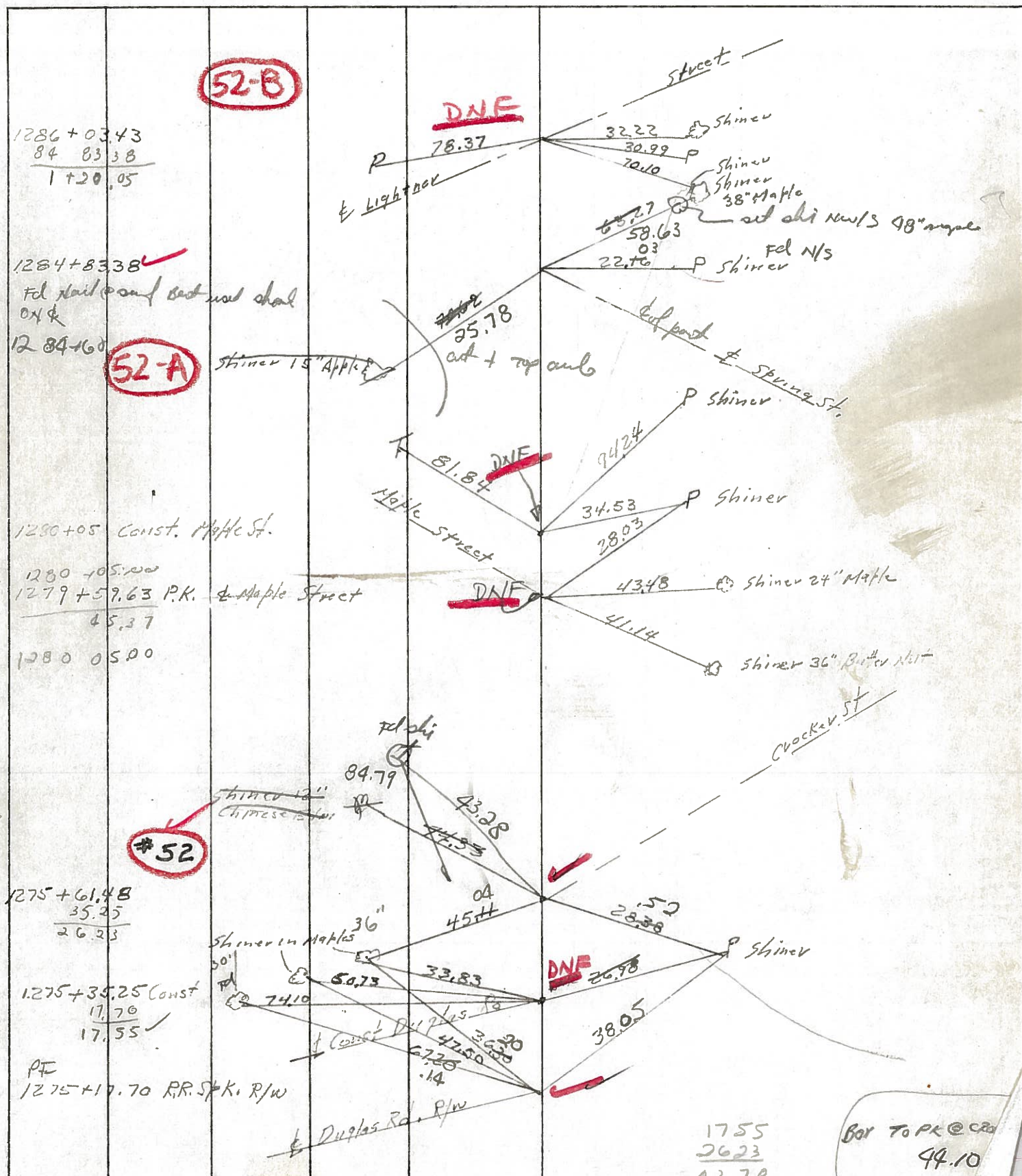




PERSONNEL	TITLE	PERSONNEL	TITLE
SILVESTER			
SMITH			
BURNSIDE			
HOFFMAN			

COUNTY WOOD DATE 5-5-70  
 S. R. #281 WEATHER CLOUDY  
 SEC. \_\_\_\_\_ TEMP. +66°

DESCRIPTION CONTROL TIES LEFT CENTER LINE RIGHT JOB NO. \_\_\_\_\_



Box 774+89

Box 27  
76

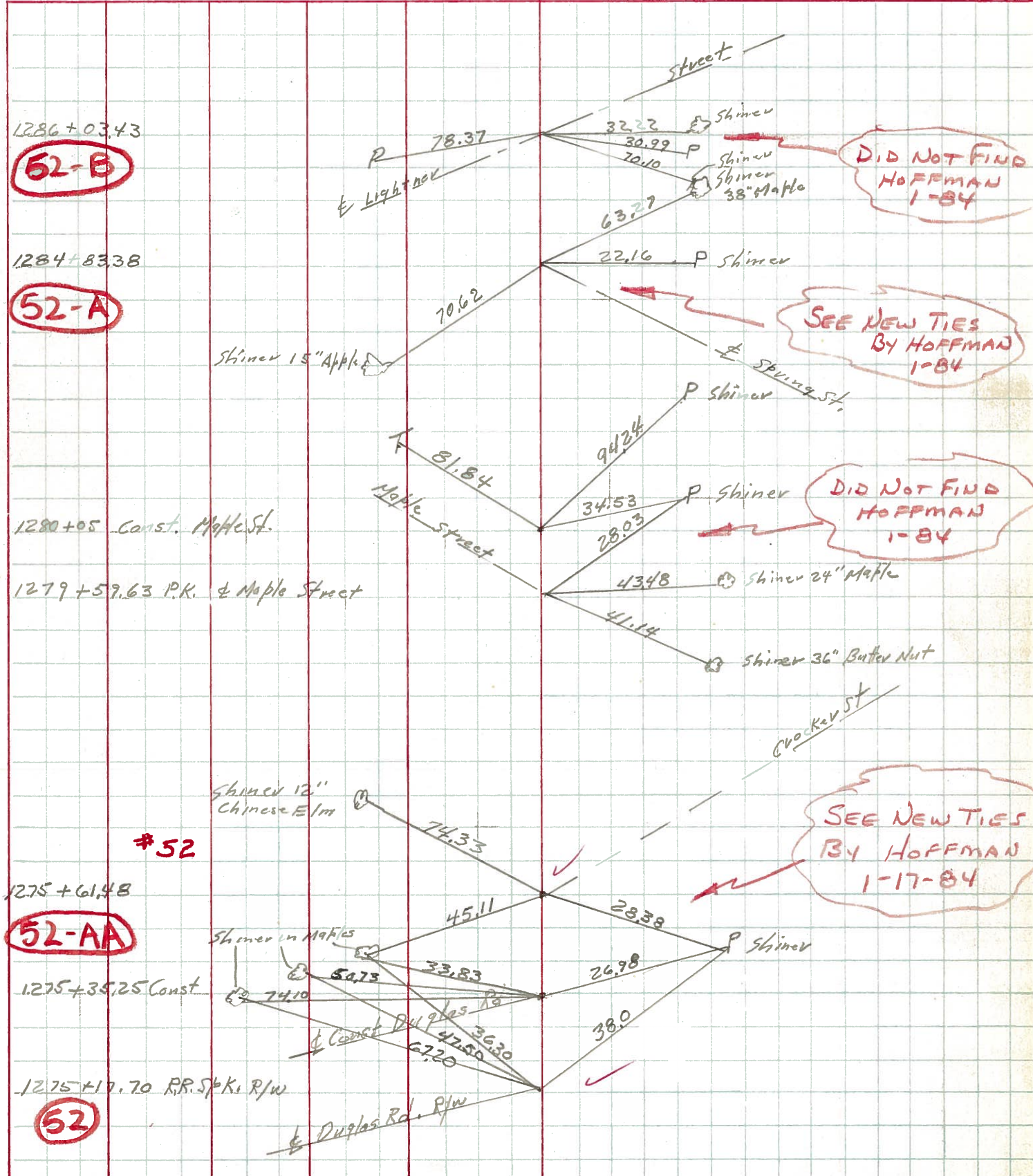
1755  
2623  
4270

Box To PK @ C20  
44.10



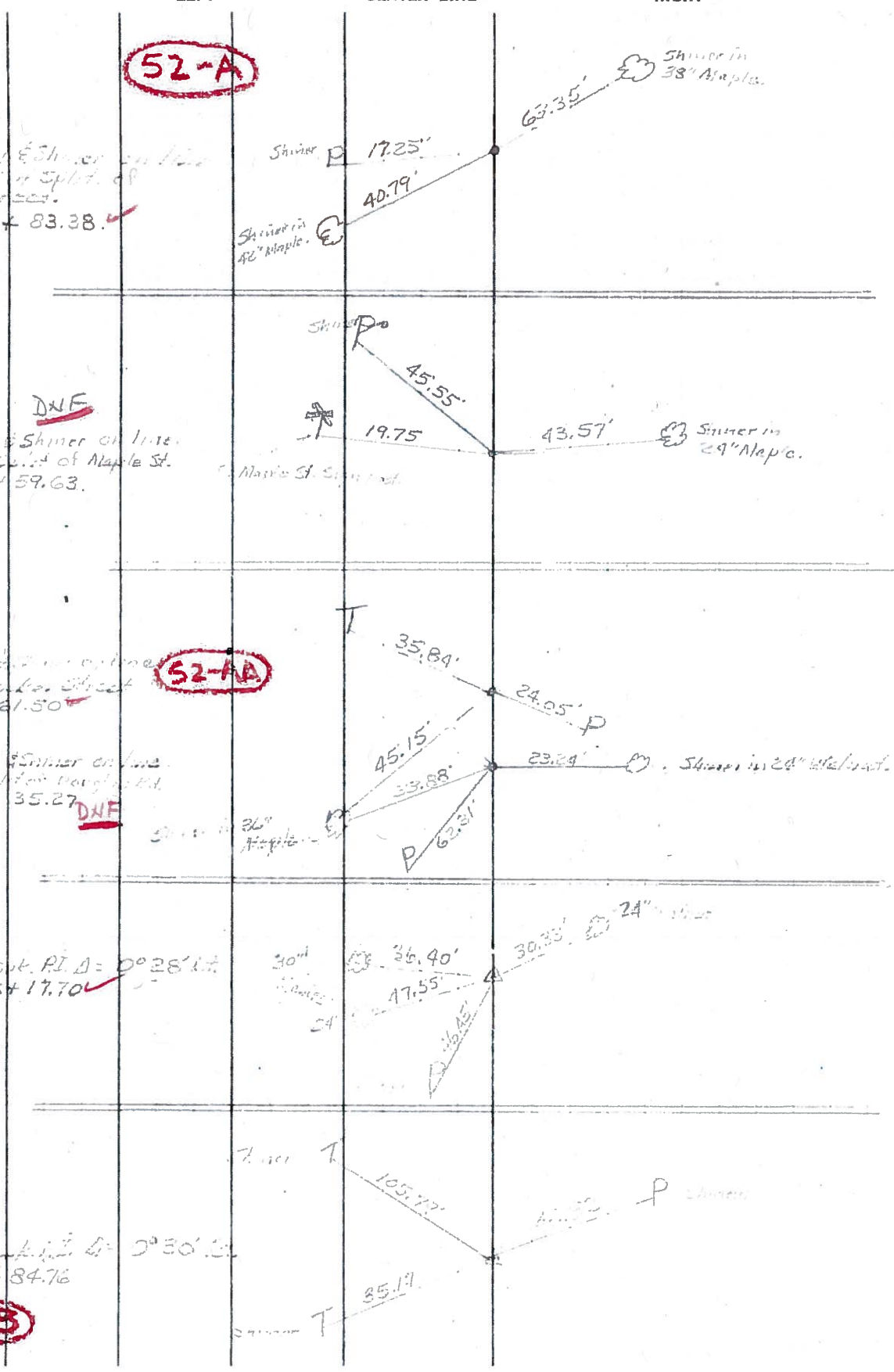
PERSONNEL	TITLE	PERSONNEL	TITLE	COUNTY	DATE
SILVESTER				WOOD	5-5-70
SMITH				S. R. #281	WEATHER CLOUDY
BURNSIDE				SEC.	TEMP. +66°
HOFFMAN					

DESCRIPTION **CONTROL TIES** JOB NO.



PERSONNEL	TITLE	PERSONNEL	TITLE	COUNTY	DATE	WEATHER	TEMP.
Merrison		Waddington		Wool	Dec 8, 1962	Clear	45°
Bowers				S. R. #281			
Holcomb				SEC. 22.01			
Curry							

DESCRIPTION: Ties to Central line & bearing on line JOB NO. \_\_\_\_\_



**52-A**

Set P.A. & Shiner on line on to center of Spl. of Spring Street. Sta. 1284+83.38

**DNE**

Set P.A. & Shiner on line. Pavement Split of Maple St. Sta. 1279+59.63

**52-1A**

Set P.A. & Shiner on line. Pavement Split of Douglas St. Sta. 1273+61.50

**DNE**

Set P.A. & Shiner on line. Pavement Split of Douglas St. Sta. 1275+35.27

**52**

Point A. Sub. P.I. Δ = 0°28'14" Sta. 1275+17.70

**51-B**

Point A. Sub. P.I. Δ = 0°30'12" Sta. 1238+84.76