

O.D.O.T. DISTRICT 2 SURVEY OFFICE (USE ONLY)

PERSONNEL

REFERENCE NO. 52 AA

SHEET 40 OF 49

NOTES HUSS

DATE 4/2/12

ROUTE SR 281

H.C. CANTERBURY

WEATHER CLOUDY

COUNTY WOOD

R.C. HARBAUGH

TEMP. 58°

TOWNSHIP MONTGOMERY

SECTION 11

T 4 N R 12 E

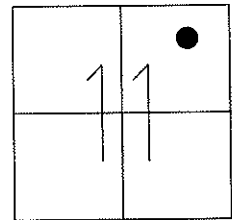
TYPE MONUMENT P.K./WASHER

ON SURFACE - ~~BELOW~~ ON

LEFT - ☉ PAV'T - RIGHT ON

- TO - EDGE PAVEMENT

S.L.M. 1275+33.01



Grid: Northing: 604829.174 Easting: 1709717.719

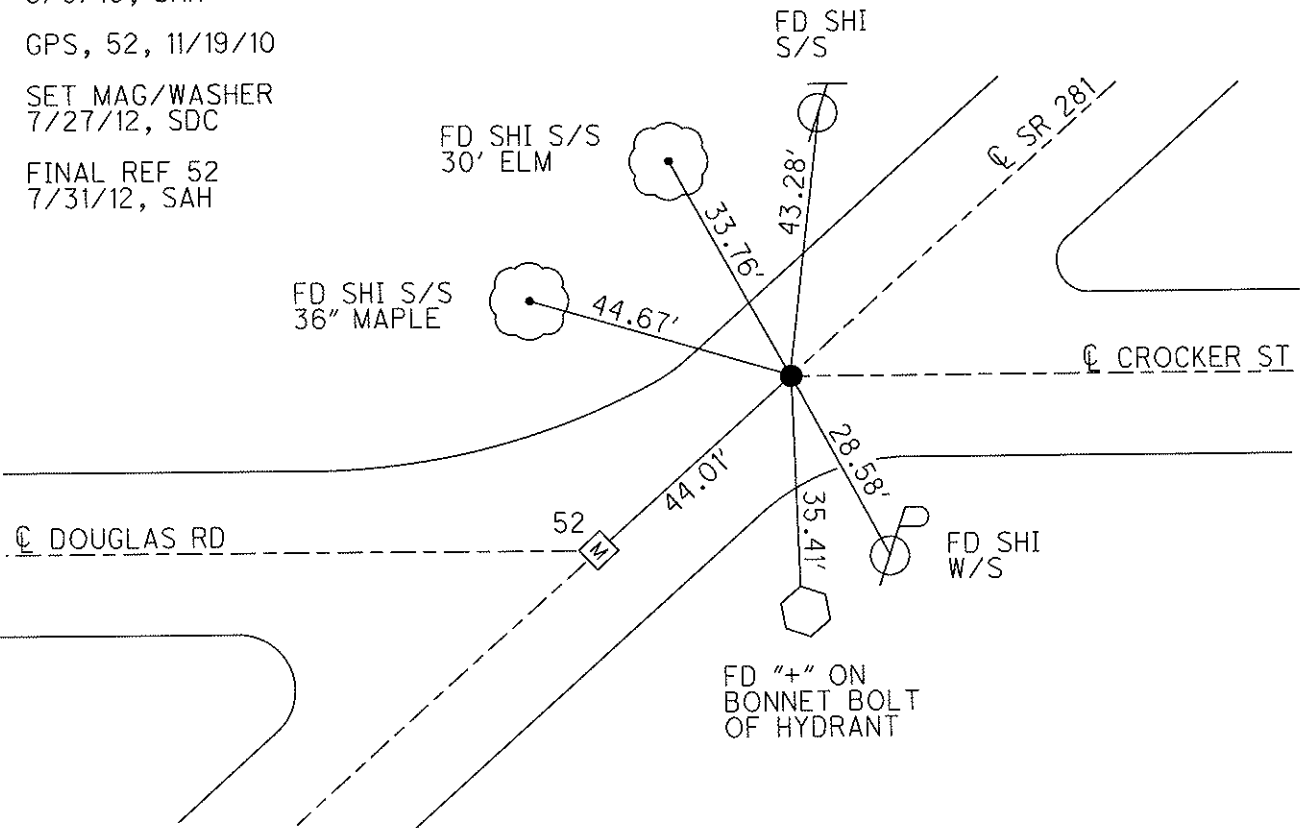
RECORD STA.
1275+61.48

FD P.K./WASHER
8/9/10, SAH

GPS, 52, 11/19/10

SET MAG/WASHER
7/27/12, SDC

FINAL REF 52
7/31/12, SAH



O.D.O.T. DISTRICT 2 SURVEY OFFICE

PERSONNEL

REFERENCE NO. 52

SHEET OF

NOTES LOEHRKE

H.C. VAN DUSEN

DATE 7-30-91

ROUTE S.R. 281

R.C. KUSZ

WEATHER CLEAR

COUNTY WOOD

BARNHISEL

TEMP. +80°

TOWNSHIP MONTGOMERY

SECTION 11

T 4 N R 12 E

TYPE MONUMENT "A" Mon. Box "B" P.K. WASHER

ON SURFACE - BELOW YES YES

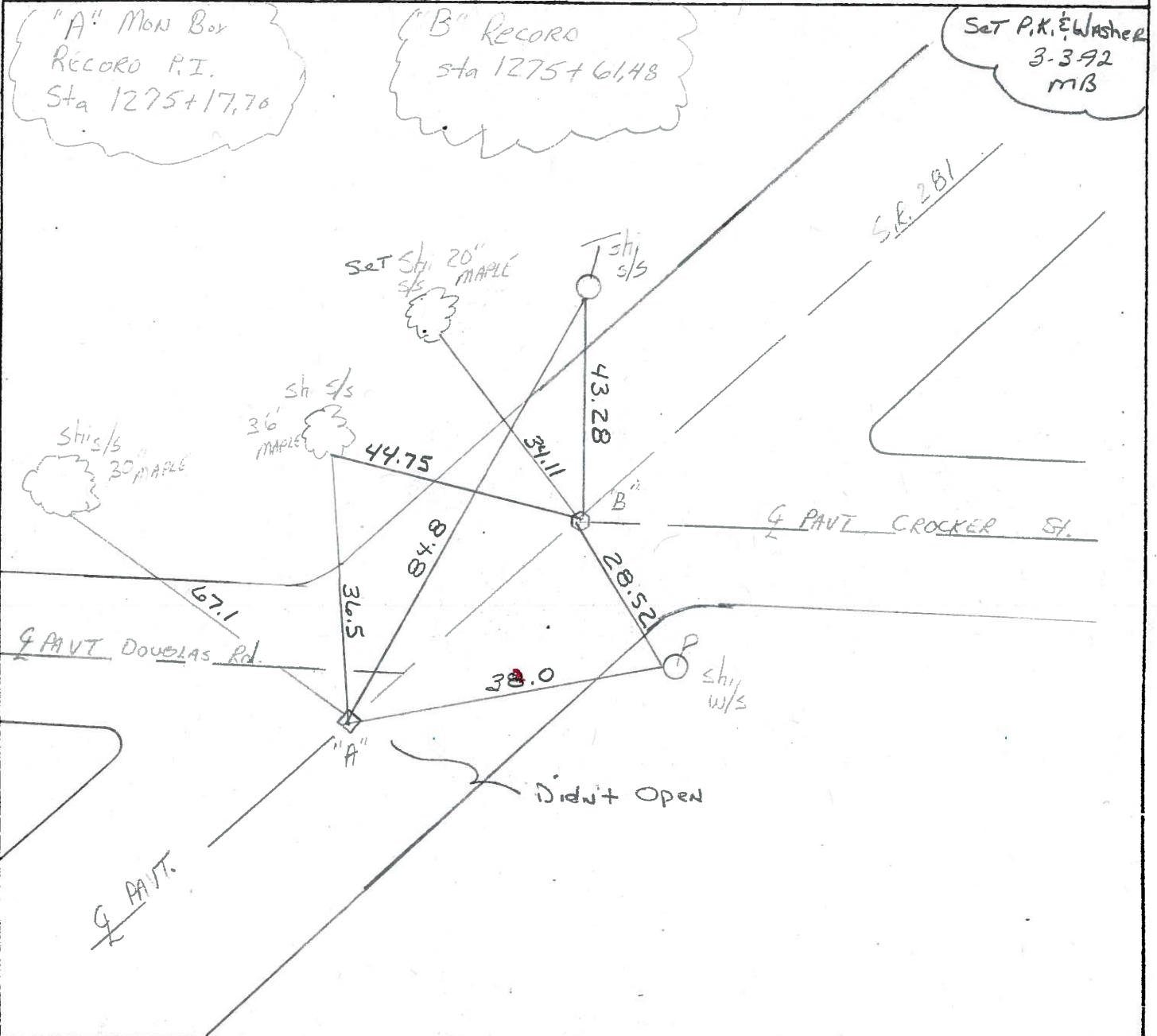
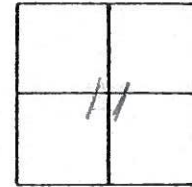
LEFT - ☐ PAV'T. - RIGHT YES YES

- TO - EDGE PAVEMENT

S.L.M. 1274+89 "Mon Box"

52

52-AA



County Wood S.R. 281

Date 1-17-84

Township MONTGOMERY

Weather P. Clear

Section 11 IN BRADNER

Temp. 20°

T4N, R12E

Personnel HOFFMAN

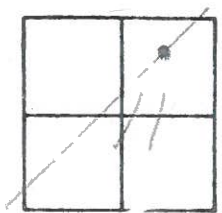
LOEHRKE

HOUSEHOLDER R.C.

BARWISER H.C.

52

52-AP



PT. "A" Fd. mark, BOX @ surface ON & PAUT SR 281

S.L.M. 1274+89

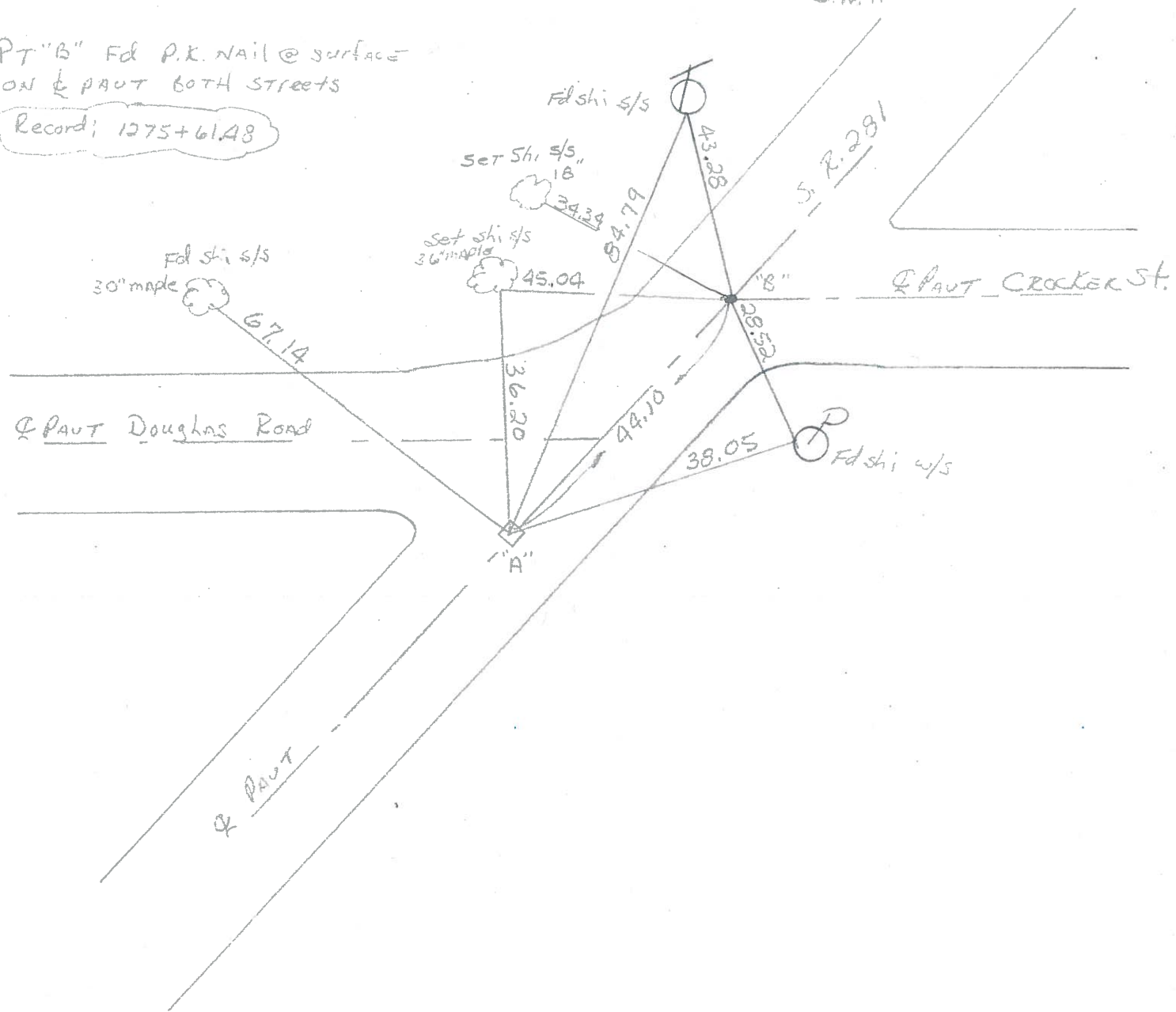
"+" ON TOP REF.

Record: P.I. 1275+17.70

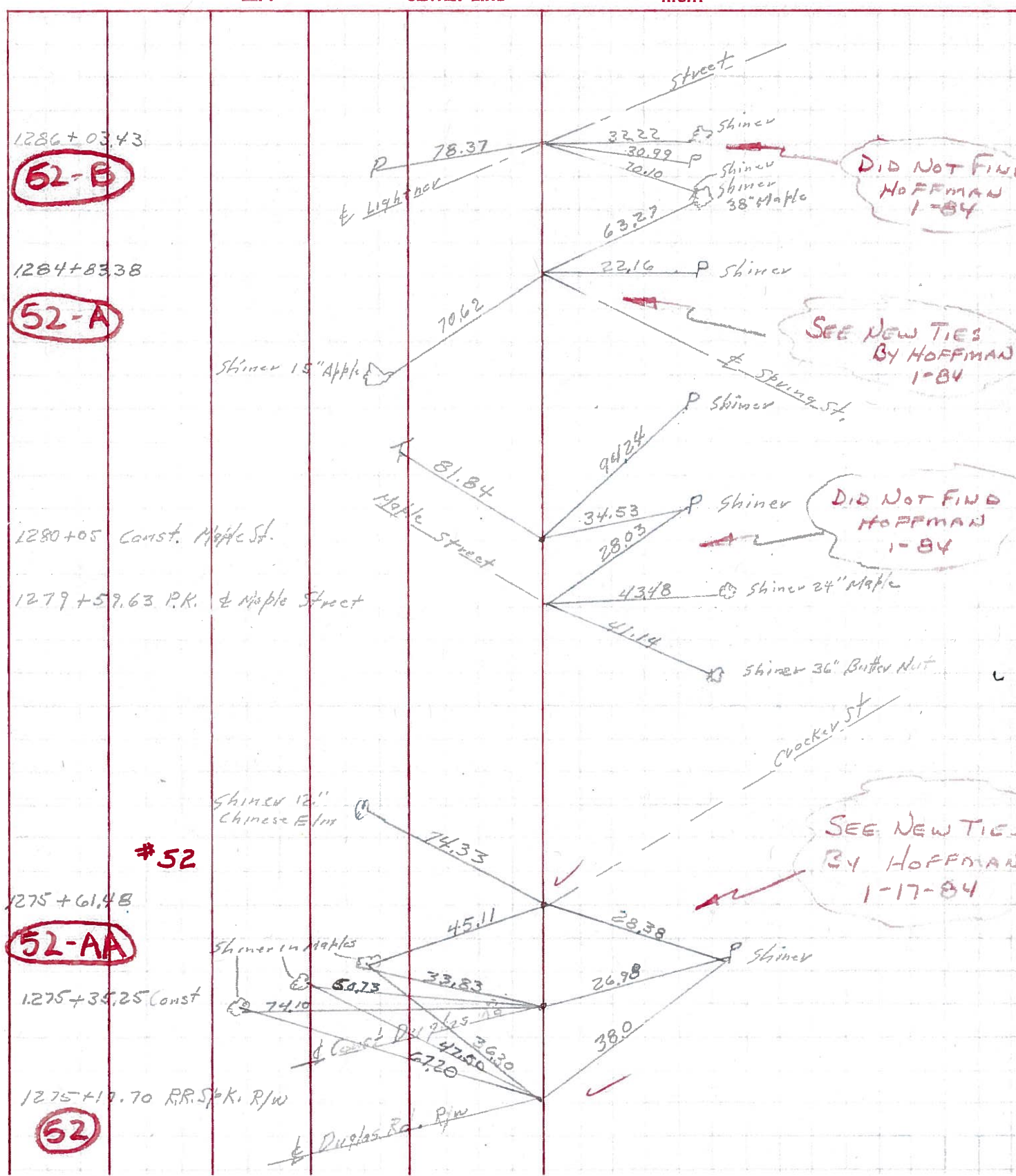
Set P.K/Washer
8-20-84
S.W.H.

PT "B" Fd P.K. NAIL @ surface
ON & PAUT BOTH STREETS

Record: 1275+61.48



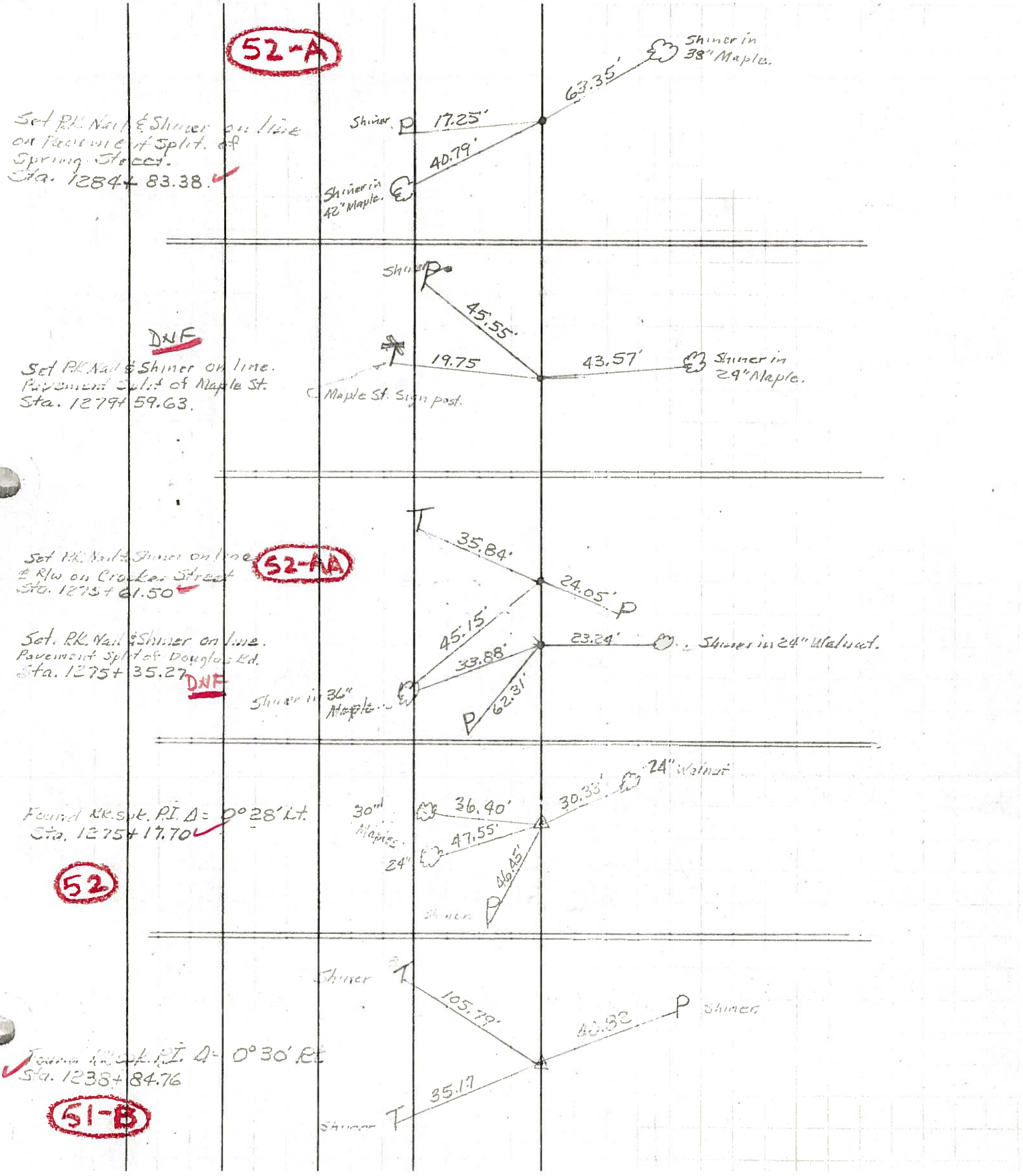
PERSONNEL TITLE PERSONNEL TITLE COUNTY WOOD DATE 5-5-70
SILVESTER _____
SMITH _____ S. R. #281 WEATHER CLOUDY
BURNSIDE _____ SEC. _____ TEMP. +66°
HOFFMAN _____
 DESCRIPTION CONTROL TIES JOB NO. _____



PERSONNEL	TITLE	PERSONNEL	TITLE	COUNTY	DATE
Marrison		Waddington		Wood	Dec., 8, 1965
Bowers				S. R. #281	WEATHER Clear
Holcombe				SEC. 22.01	TEMP. 45°
Curry					

DESCRIPTION Ties to Control points & bounds on line JOB NO.

LEFT CENTER LINE RIGHT



PERSONNEL TITLE PERSONNEL TITLE

COUNTY Wood

DATE 12-6-57

S. R. #281

MORRISON 8-24-62

WEATHER 11-1-62

SWORDEN - 2-18-64

SEC. TEMP.

DESCRIPTION LEFT CENTER LINE RIGHT JOB NO.

Set P.P. spike 532.2'		Shiner in T. Pole N. 31.22
N. of the ^{N. line} W. line cor. sec. 21	O.K. ✓	S.E. cor. conc. block porch N.W. 66.6
by survey from ^{975.3'} 318.1' Firebaugh & Costie Plat also lot #2		Shiner in fence post H. 30.8
Ed. J. Pin 318.1 w. of the		Shiner in 20" maple N.E. 37.7
A line of lot #2	O.K.	Shiner in P. Pole S.S.E. 28.3
		Shiner in fence post N. 27.6
		Shiner in P.P. W.N.W. 78.2
Iron bolt, 975.1' E of w. line lot #2	O.K.	Shiner in 15' maple E. 81.87
		Shiner in br. pole N. 32.6
		Shiner in P.P. S.S.E. 25.82 27.0
		N.W. to S.W. cor. conc. Porch ^{49.60 slab 48} 49.
		N.N.W. to S.E. cor. conc. Porch ^{47.6} 47.6
		S.S.W. to shi. in P.P. ^{Slab} 23.7
E. main & Church st. Wayne Stone - P.P. spike		Bottom brick N.W. cor. porch S. 44.3
		S.E. cor. block porch fdn. N.W. 46.3
		S.E. cor. block porch fdn. N.W. 50.9
		Bottom brick N.E. Cor. porch S.E. 51.9
Crocker st & S.H. 640 Bradner Iron bolt.		
		Shiner in 24" maple N.W. 47.5
		Shiner in 30" maple N.W. 36.1
		Shiner in 24" Walnut E. 30.3

#137 (49)

(49-A)

(49-B)

#186-A

(49-E)

(See pages 16-17-18)

#187-A

(52-AA)

#191-A