

O.D.O.T. DISTRICT 2 SURVEY OFFICE (USE ONLY)

PERSONNEL

REFERENCE NO. 52 A

SHEET 41 OF 49

NOTES HUSS

DATE 4/2/12

ROUTE SR 281

H.C. CANTERBURY

WEATHER CLOUDY

COUNTY WOOD

R.C. HARBAUGH

TEMP. 59°

TOWNSHIP MONTGOMERY

SECTION 11

T 4 N R 12 E

TYPE MONUMENT P.K./WASHER

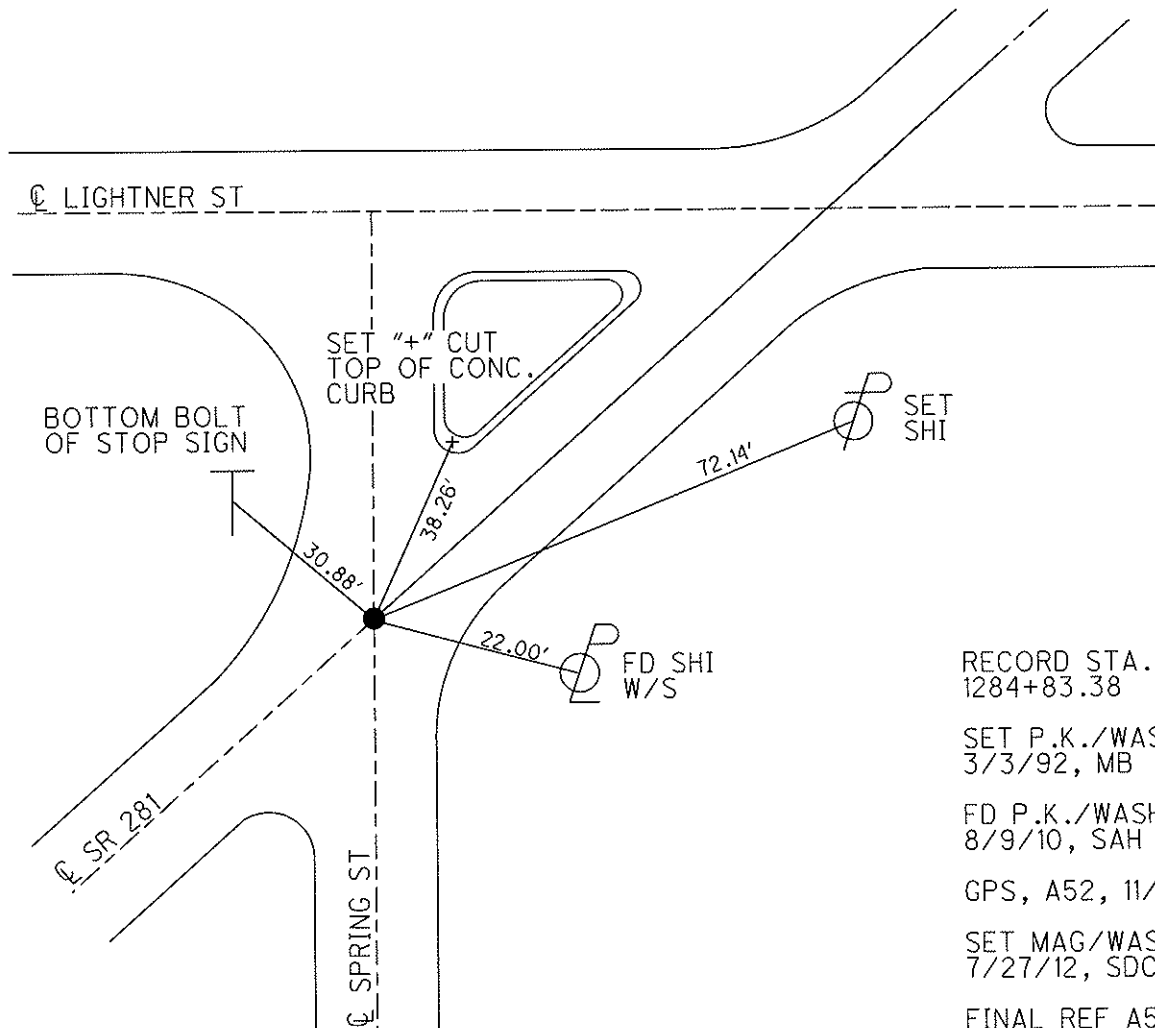
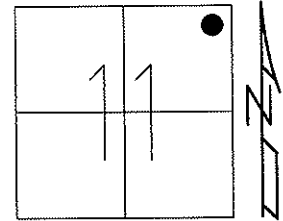
ON SURFACE - ~~BELOW~~ ON

LEFT - Q PAV'T - RIGHT ON

- TO - EDGE PAVEMENT

S.L.M. 1284+60

Grid: Northing: 605447.250 Easting: 1710409.059



RECORD STA.
1284+83.38

SET P.K./WASHER
3/3/92, MB

FD P.K./WASHER
8/9/10, SAH

GPS, A52, 11/19/10

SET MAG/WASHER
7/27/12, SDC

FINAL REF A52
7/31/12, SAH

O.D.O.T. DISTRICT 2 SURVEY OFFICE

PERSONNEL _____ REFERENCE NO. _____ SHEET _____ OF _____

NOTES LOENIRKE

H.C. VAN DUSEN

R.C. KUSZ

BARNHISEL

DATE 7-30-91

WEATHER CLEAR

TEMP. +80°

ROUTE S.R. 281

COUNTY WOOD

TOWNSHIP MONTGOMERY

SECTION 11

T 4 N R 12 E

TYPE MONUMENT P.K. & Washer

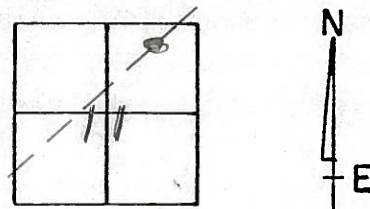
52-A

ON SURFACE - BELOW yes

LEFT - & PAV'T. - RIGHT yes

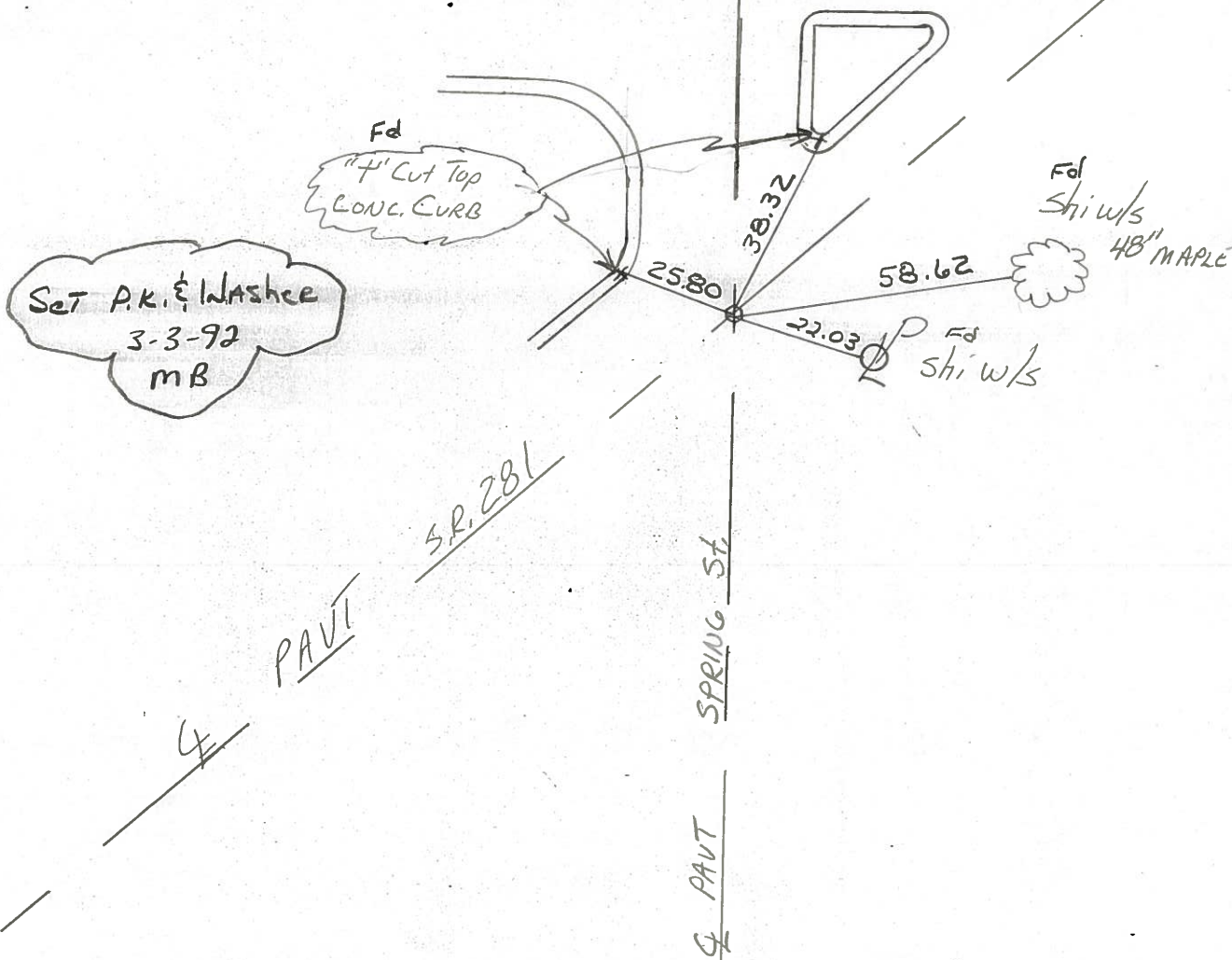
- TO - EDGE PAVEMENT

S.L.M. 1284+60 ON E OF SPRING St.



RECORD Sta
1284+83.38

4 PAVT LIGHTNER St.



Set P.K. & Washer
3-3-92
MB

Fd
4\"/>

Fd
Shi w/s
48\"/>

County Wood S.R. 281

Date 1-17-84

Township MONTGOMERY

Weather P. CLEAR

Section 11 IN BRADNER

Temp. 20°

T4N, R2E

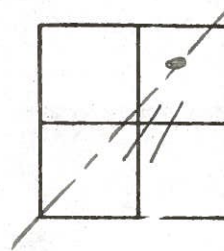
Personnel HOFFMAN

LOEHLE

HOUSEHOLDER R.C.

BARNHISEL H.C.

52-A

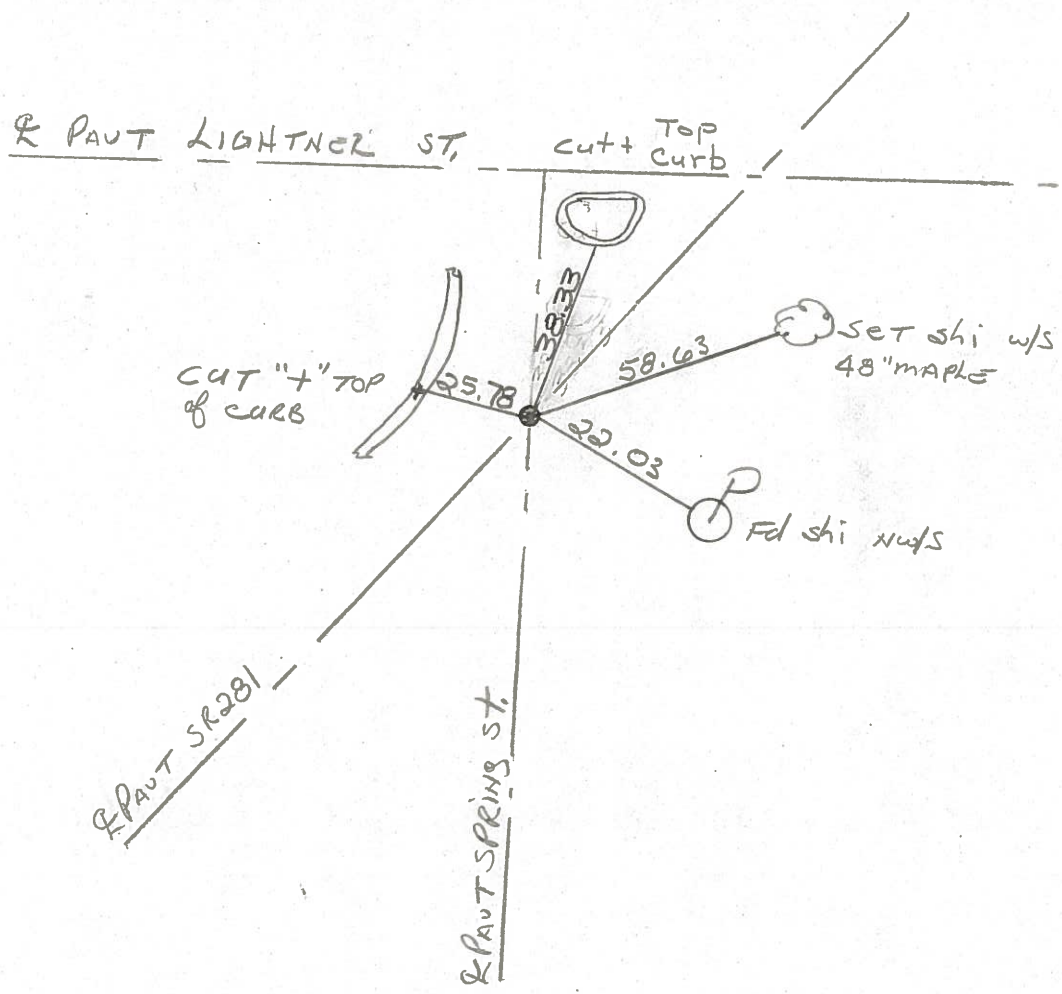


Fd. BENT NAIL @ SURFACE
USED POINT WHERE SHANK ENTERS PAUT.
ON & PAUT SR281 & SPRING ST.

S.L.M. 1284+60

Set P.K./Washer
8-20-84
S.W.H.

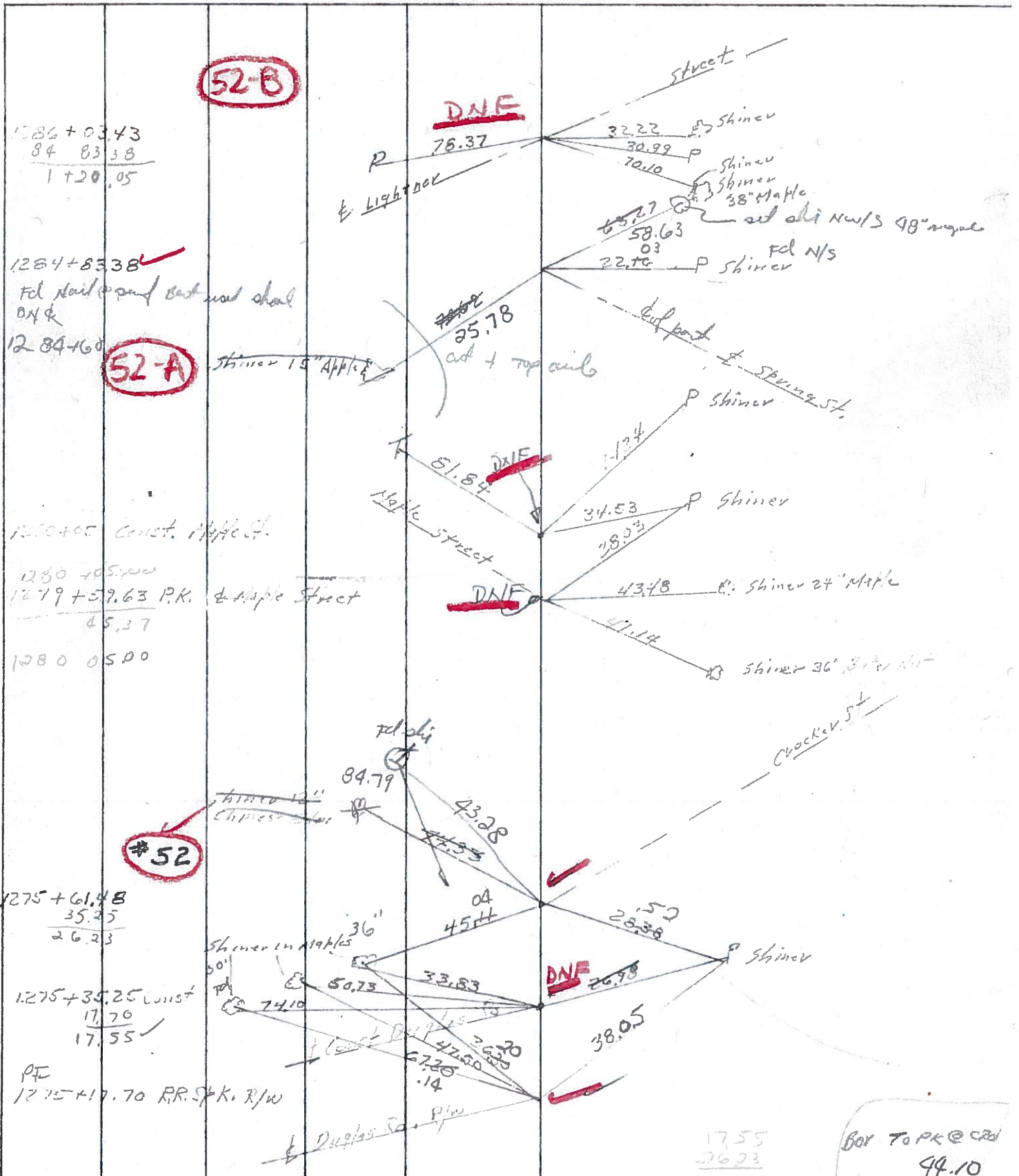
Record: 1284+83.38



PERSONNEL	TITLE	PERSONNEL	TITLE
SILVESTER			
SMITH			
CURKINSIDE			
HOFFMAN			

COUNTY WOOD DATE 5-5-70
 S. R. #281 WEATHER CLOUDY
 SEC. _____ TEMP. +66°

DESCRIPTION CONTROL TIES JOB NO. _____
 LEFT CENTER LINE RIGHT



52-B

DNE

52-A

#52

DNE

DNE

DNE

Box to PK @ CD
 44.10

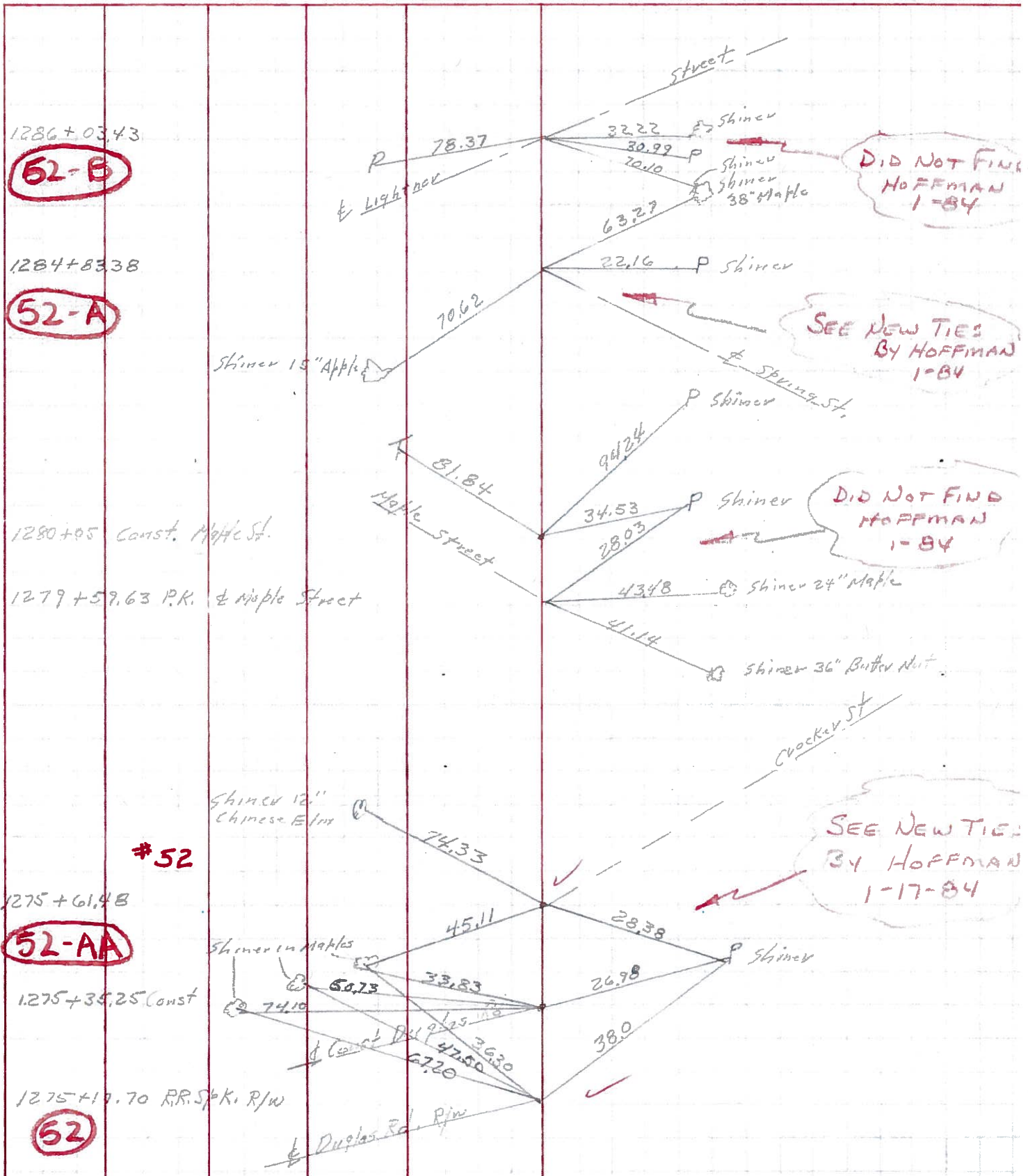
4489

7

PERSONNEL	TITLE	PERSONNEL	TITLE
SILVESTER			
SMITH			
BURNSIDE			
HOFFMAN			

COUNTY WOOD DATE 5-5-70
 S. R. #281 WEATHER CLOUDY
 SEC. _____ TEMP. +66°

DESCRIPTION CONTROL TIES JOB NO. _____



PERSONNEL TITLE PERSONNEL TITLE

Marrison
Bowers
Holcombe
Curry

Waddington

COUNTY Wood

DATE Dec. 8, 1962

S. R. #281

WEATHER Clear

SEC. 22.01

TEMP. 45°

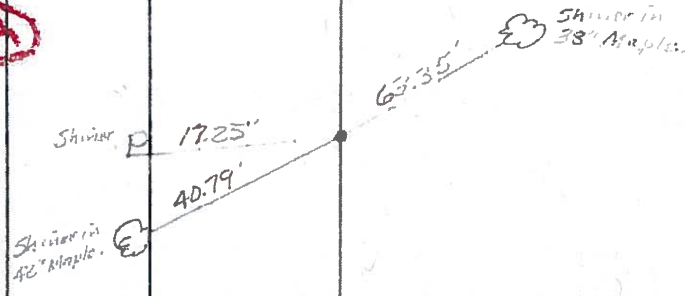
DESCRIPTION Traps to Center Line & Boundary Line

JOB NO.

LEFT CENTER LINE RIGHT

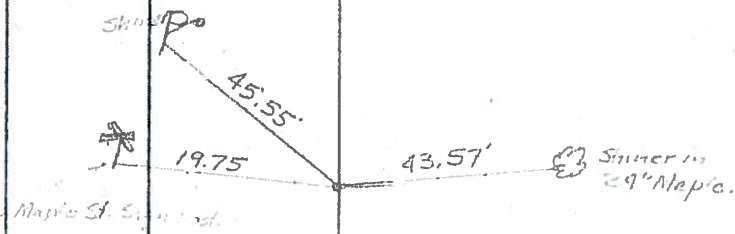
52-A

Set RR. Nail & Shiner on line
at intersection of Split of
Spring Street.
Sta. 1259+83.38



DNE

Set RR. Nail & Shiner on line.
Pavement Split of Maple St.
Sta. 1279+59.63.

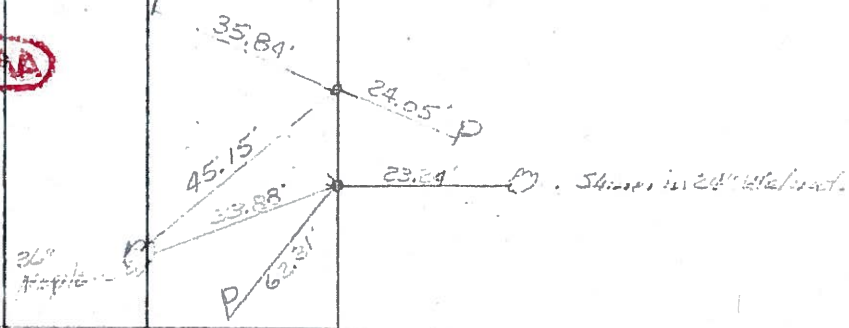


52-A

Set RR. Nail & Shiner on line
& Nail on Co. Co. Street
Sta. 1273+81.50

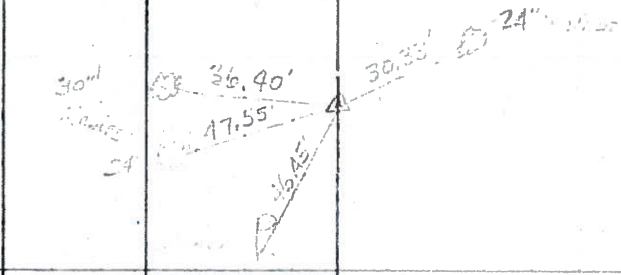
Set RR. Nail & Shiner on line.
Pavement Split of Douglas St.
Sta. 1275+35.27

DNE



Set RR. Nail & Shiner on line.
Sta. 1275+17.70

52



Set RR. Nail & Shiner on line.
Sta. 1235+84.76

51-B

