

O.D.O.T. DISTRICT 2 SURVEY OFFICE (USE ONLY)

PERSONNEL _____

REFERENCE NO. 52 C

SHEET 43 OF 49

NOTES HUSS

DATE 4/12/12

ROUTE SR 281

H.C. CANTERBURY

WEATHER CLEAR

COUNTY WOOD

R.C. HUSS

TEMP. 56°

TOWNSHIP MONTGOMERY

SECTION 11

T 4 N R 12 E

TYPE MONUMENT MONBOX

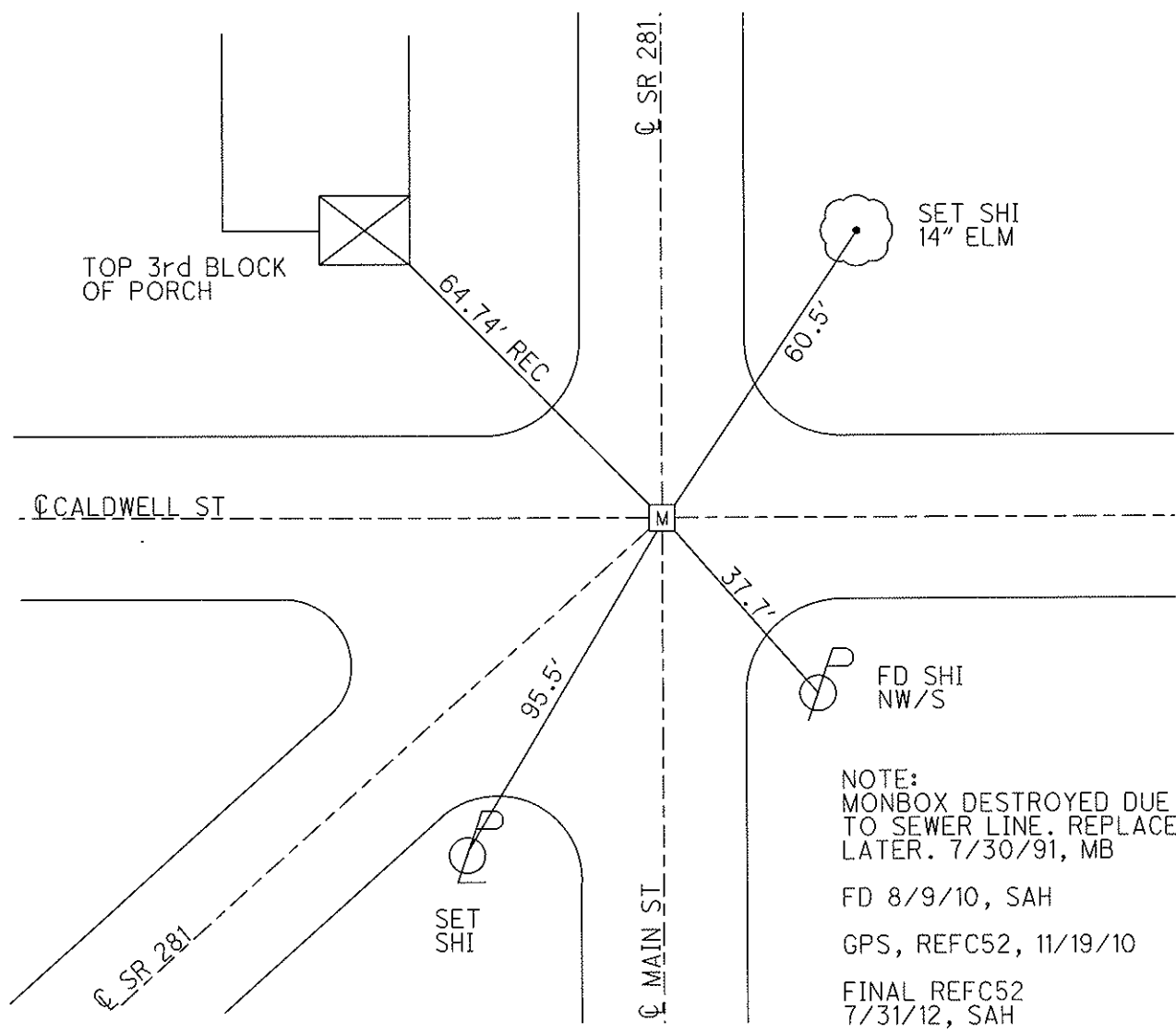
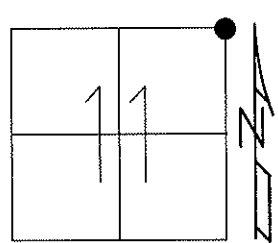
ON SURFACE - ~~BELOW~~ ON

LEFT - ☉ PAV'T - RIGHT ON

- TO - EDGE PAVEMENT

S.L.M. 1294+64

Grid: Northing: 606116.189 Easting: 1711157.446



NOTE:
 MONBOX DESTROYED DUE
 TO SEWER LINE. REPLACED
 LATER. 7/30/91, MB
 FD 8/9/10, SAH
 GPS, REFC52, 11/19/10
 FINAL REFC52
 7/31/12, SAH

O.D.O.T. DISTRICT 2 SURVEY OFFICE

PERSONNEL

REFERENCE NO. 52-A

SHEET ____ OF ____

NOTES LOEHRKE

H.C. VAN DUSEN

DATE 7-30-91

ROUTE S.R. 281

R.C. KUSZ

WEATHER clear

COUNTY WOOD

BARNHISEL

TEMP. +80°

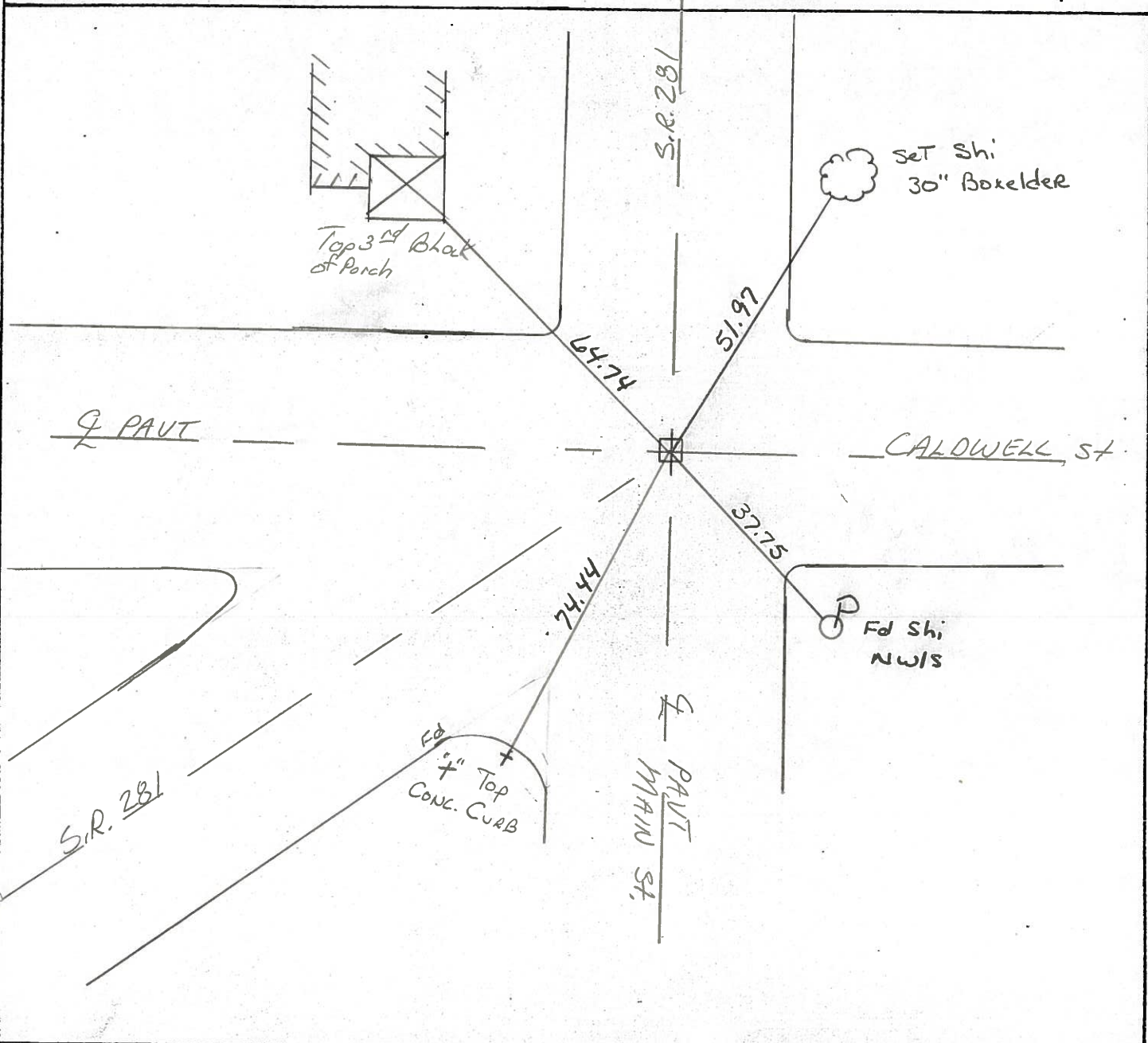
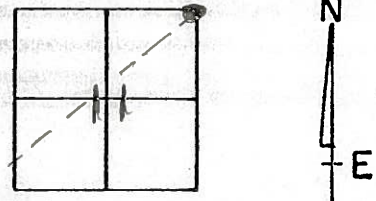
TOWNSHIP MONTGOMERY

SECTION 11

52-C

T 4 N R 12 E

TYPE MONUMENT P.K. NAIL (mon Box Destroyed)
 ON SURFACE - BELOW yes due to sewer line.
 LEFT - PAV'T. - RIGHT OF ALL ROADS BUT Replace at
- TO - EDGE PAVEMENT a later DATE)
 S.L.M. 1294+64



County Wood S.R. 281

Township MONTGOMERY

Section 11

T4N, R12E

Personnel HOFFMAN

52-C

52-A

LOHRKE

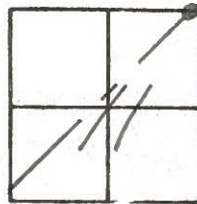
HOUSEHOLDER R.C.

BARNHISEL H.C.

Date 1-17-84

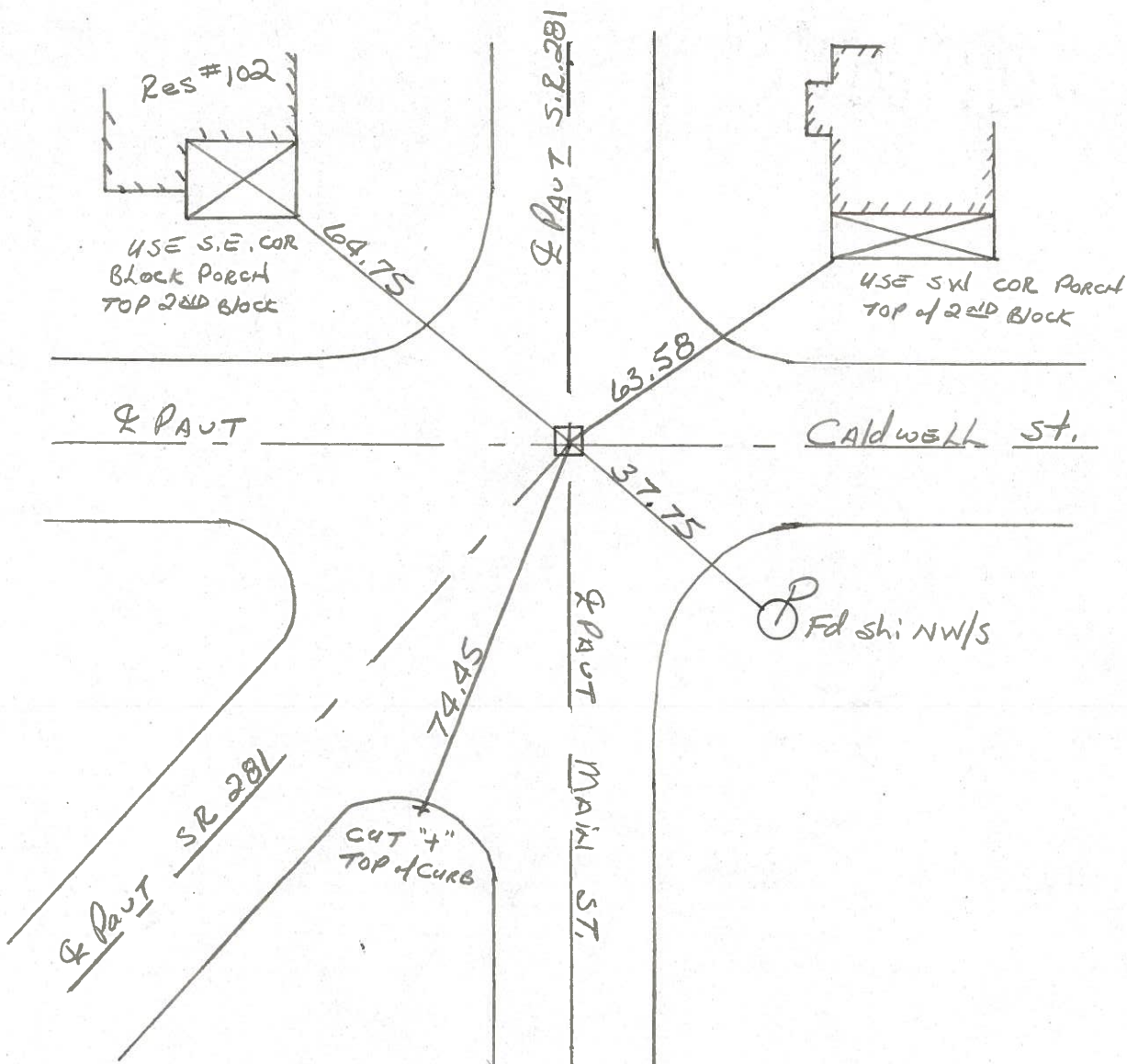
Weather P. CLEAR

Temp. 20°



Fd. MON BOX / "t" ON LID @ SURFACE
IN C OF ALL PAUTS

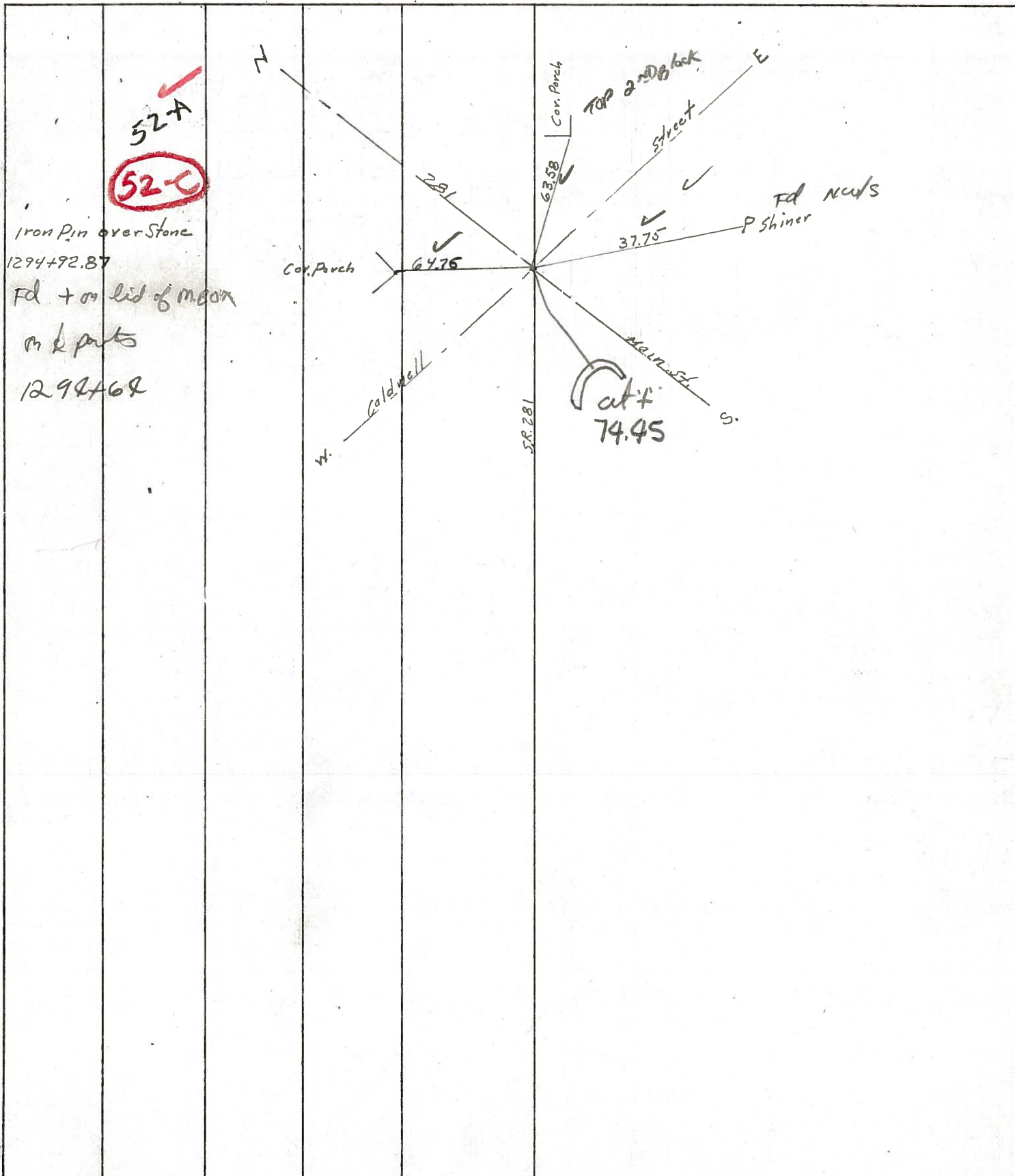
SLM 1294+64



PERSONNEL	TITLE	PERSONNEL	TITLE
SILVESTER			
BURNSIDE			
HOFFMAN			

COUNTY WOOD DATE 5-6-70
 S. R. #281 WEATHER CLEAR
 SEC. _____ TEMP. +62°

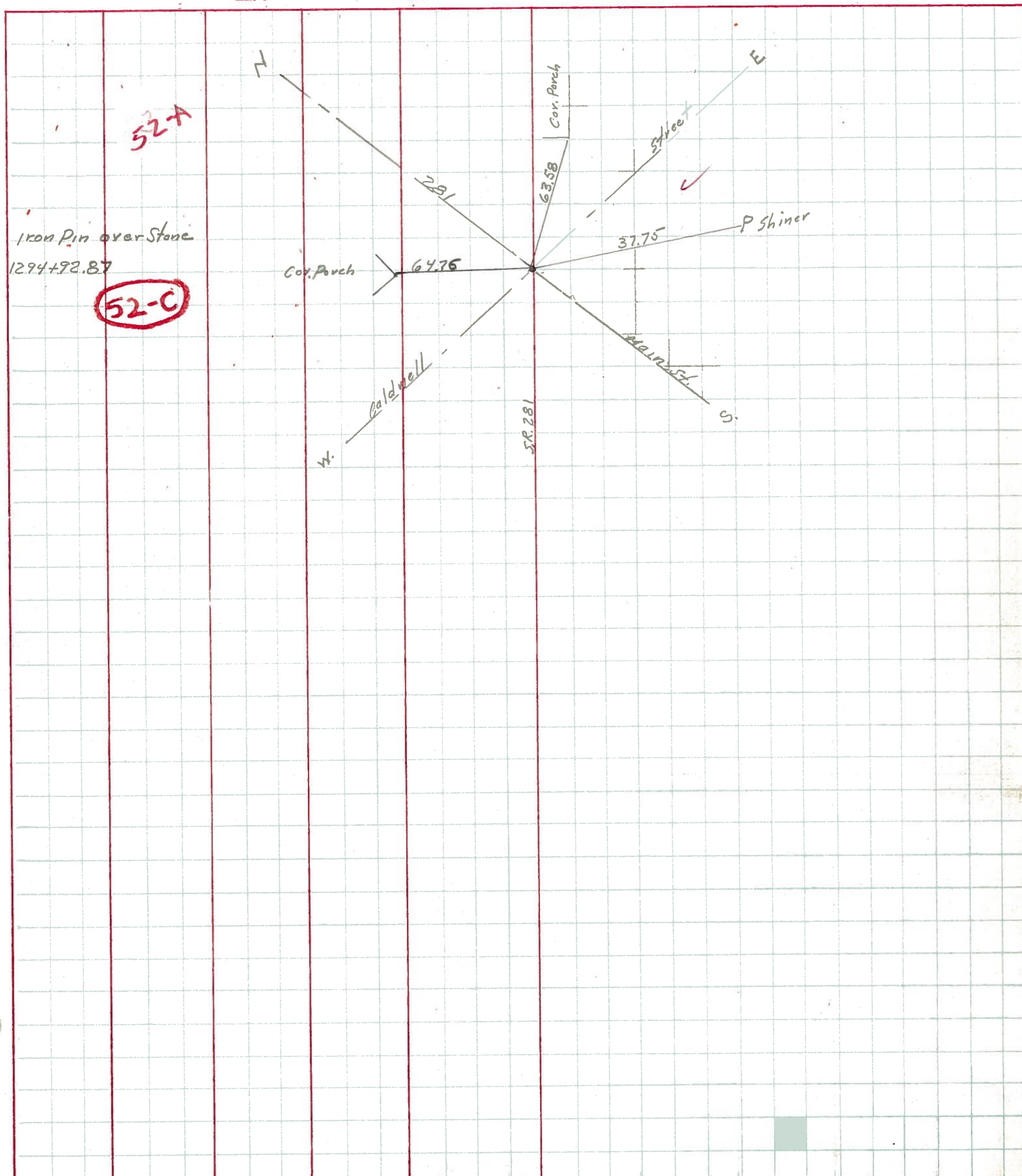
DESCRIPTION CONTROL TIES JOB NO. _____



PERSONNEL	TITLE	PERSONNEL	TITLE
SILVESTER			
BURNSIDE			
HOFFMAN			

COUNTY WOOD DATE 5-6-70
 S. R. #281 WEATHER CLEAR
 SEC. _____ TEMP. +62°

DESCRIPTION CONTROL TIES JOB NO. _____



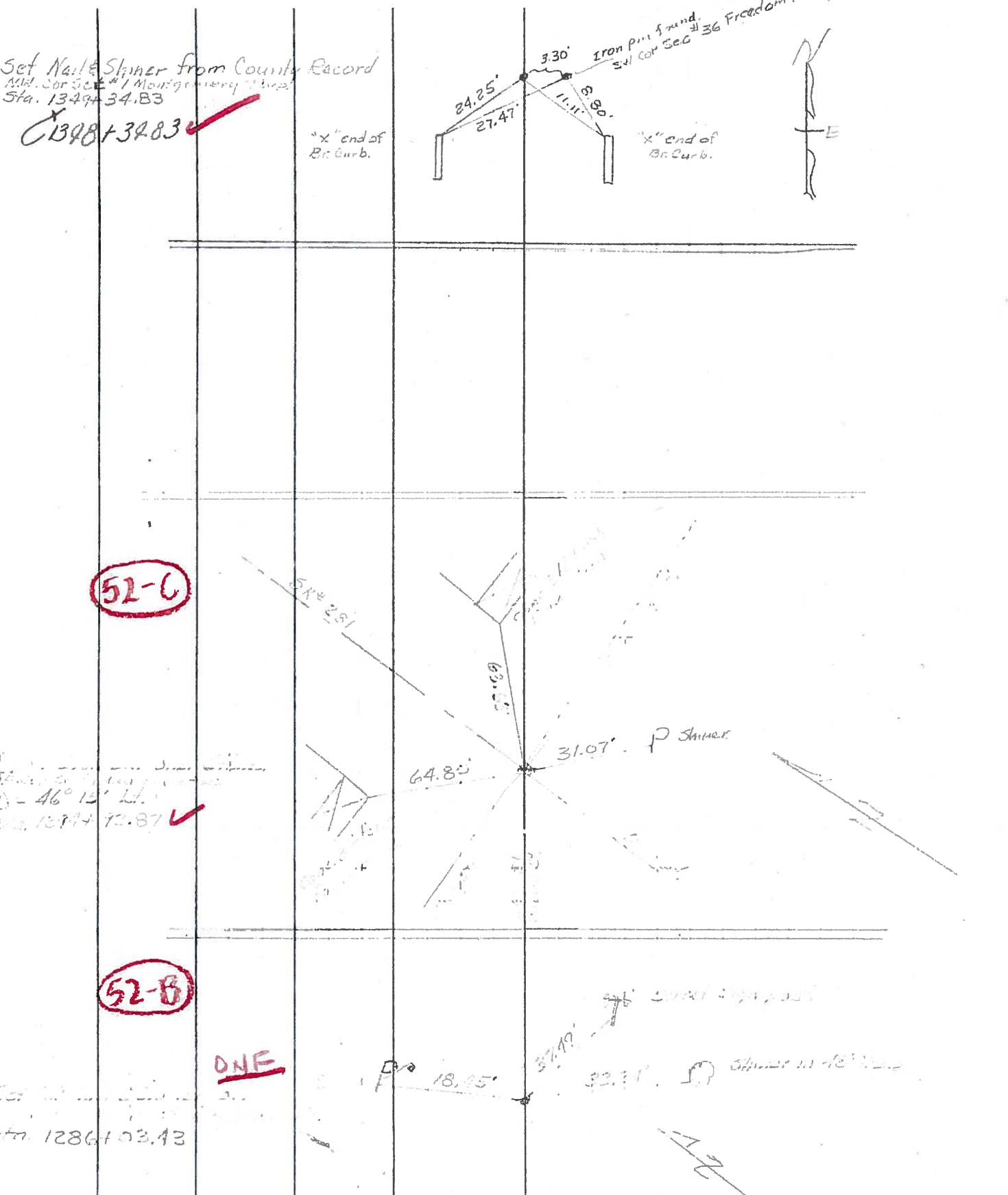
Iron Pin over Stone
 1294+92.87

52-C

52-A

PERSONNEL	TITLE	PERSONNEL	TITLE	COUNTY	DATE	WEATHER	TEMP.
<i>Amerson</i>		<i>Waddington</i>		<i>Wood</i>	<i>Dec. 8, 1965</i>	<i>Clear</i>	<i>40°</i>
<i>Edwards</i>				S. R. # <i>251</i>			
<i>Helcom</i>				SEC. <i>23.01</i>			
<i>Conroy</i>							

DESCRIPTION *Ties to Central points & lines on site* JOB NO. _____



PERSONNEL	TITLE	PERSONNEL	TITLE

COUNTY Wood DATE OK 12-9-57
 S. R. #281 Jameson - 8-8-58
 WEATHER Swoden 2-18-64
 SEC. _____ TEMP. _____

DESCRIPTION _____ LEFT _____ CENTER LINE _____ RIGHT _____ JOB NO. _____

DESCRIPTION	LEFT	CENTER LINE	RIGHT	JOB NO.
P.I. Sta. 52+36.60 Δ = 3°-33' R. Iron pin			Shiner in cable pole E. 22.38 Shiner in 18" pine S. 72.49' Shiner in 12" walnut S.W. 37.62 Shiner in P.P. 48.55' N. 52.52' Shiner in walnut W. 66.30'	

#189

Sta. 63+44.38 Δ = 0°-07' Lt. Set R.R. spk. Fd. 8/8/58 P.I.			Shiner in Anchor Post E. 41.40' Shiner in cable pole W. 35.32 Shiner in P.P. N.E. 74.34' Shiner in P.P. S.S.W. 80.57'	
---	--	--	--	--

#189A

P.I. Sta. 76+83.45 Δ = 0°-30' R. Iron pin on line Fd 8/8/58			Shi. in cable Pole N.N.E. 105.82 ⁷⁵ Nail in end fence post S. 25.98' Nail in T.P. W. 28.30' Shiner in cable pole 35.18 W. 28.40' Shiner in P.P. S. 60.00' Shiner in P.P. E.N.E. 91.93' E. 40.82	
---	--	--	--	--

#190

P.I. Sta. 113+18.17 Δ = 0°-27'-30" Lt. Set iron pin on line 115.5 Pt. W. of N.W. cor. stone of the N.E. 1/4 of the N.E. 1/4 Sec. 11 Montgomery Twp.			Shiner in P. Pole W. 46.45 Shiner in 30" maple N.W. 36.40 Shiner in 18" walnut E. 30.33' Shiner in 24" Maple W.N.W. 47.55'	
--	--	--	---	--

#191

PERSONNEL TITLE PERSONNEL TITLE

COUNTY Wood

DATE 12-9-57

Jameson-8-8-58

S. R. # 281

WEATHER

SEC. TEMP.

DESCRIPTION LEFT CENTER LINE RIGHT JOB NO.

P.I. sta. 132 + 93.98
 Fd. stone - set iron pin
 on top
 $\Delta = 46^\circ - 13' Lt.$
#192

Cor. stone block porch N.E. 63.6
 Cor. stone block porch N.W. 64.8
 Nail in T.P. S.E. 31.10

P.I. sta. 186 + 36.40
 Fd. iron bolt
 $\Delta = 91^\circ - 40'$ with N. line
 sec. 1 montgomery twp.
#193

N.E. cor. of W. rail br. S.W. 27.47
 N.W. cor. of E. rail br. S.E. 8.80