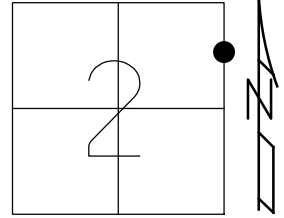


O.D.O.T. DISTRICT 2 SURVEY OFFICE (USE ONLY)

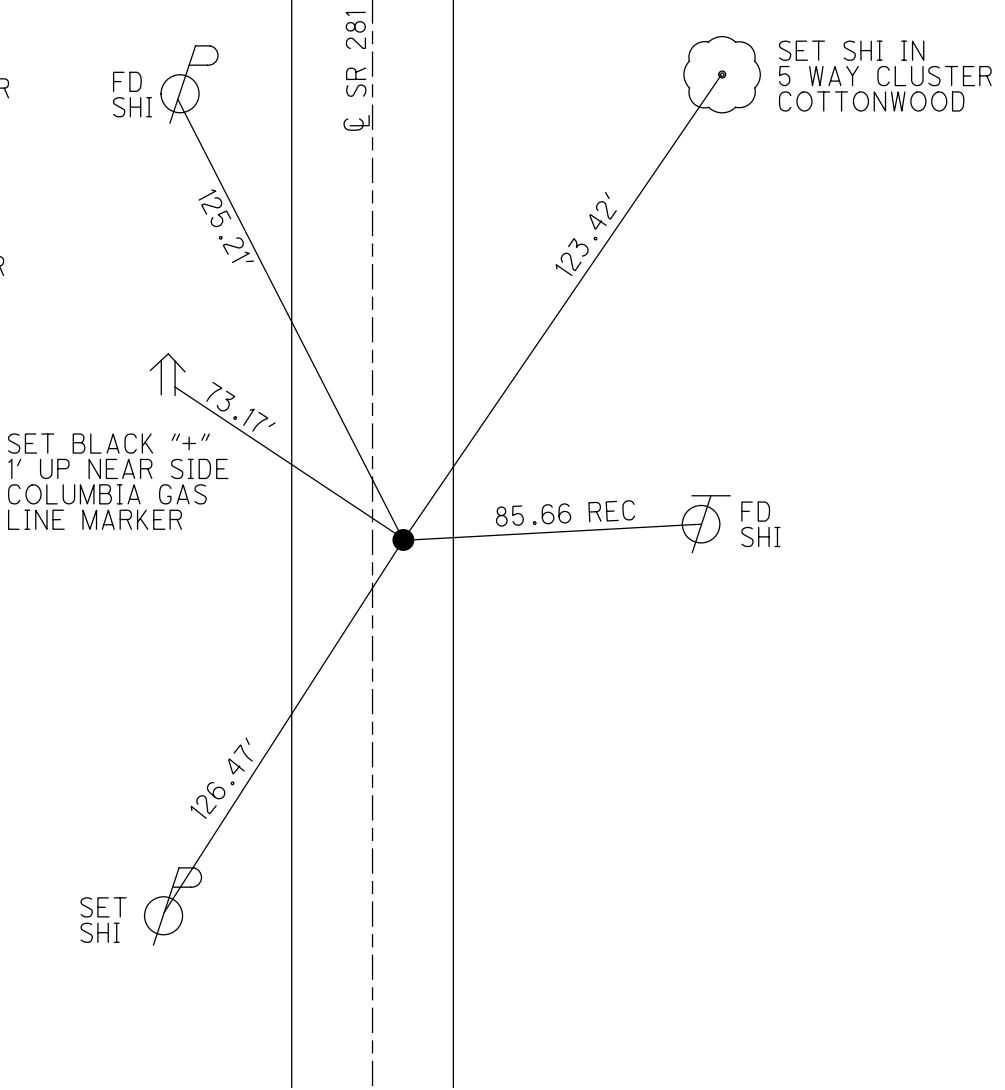
PERSONNEL _____ REFERENCE NO. 54 A SHEET 49 OF 51
 NOTES MILLER DATE 6/14/23 ROUTE SR 281
 H.C. AUBLE WEATHER BREEZY COUNTY WOOD
 R.C. NIESE TEMP. 57° TOWNSHIP MONTGOMERY
BEJARANO SECTION 2
 DWG BY RHOADES PID CHIP SEAL T 4 N R 12 E

TYPE MONUMENT D.N.F. MAG/WASHER
 ON SURFACE - ~~BELOW~~ ON
 OFFSET Q PAVEMENT 0.7' ~~LT~~ : RT
10.8' TO LT EDGE PAVEMENT
 STATION: 1334+13



HORIZ. DATUM: NAD83 2011 GEOID: NAVD88 2018
 GRID: NORTHING: 610062.754 EASTING: 1711292.433

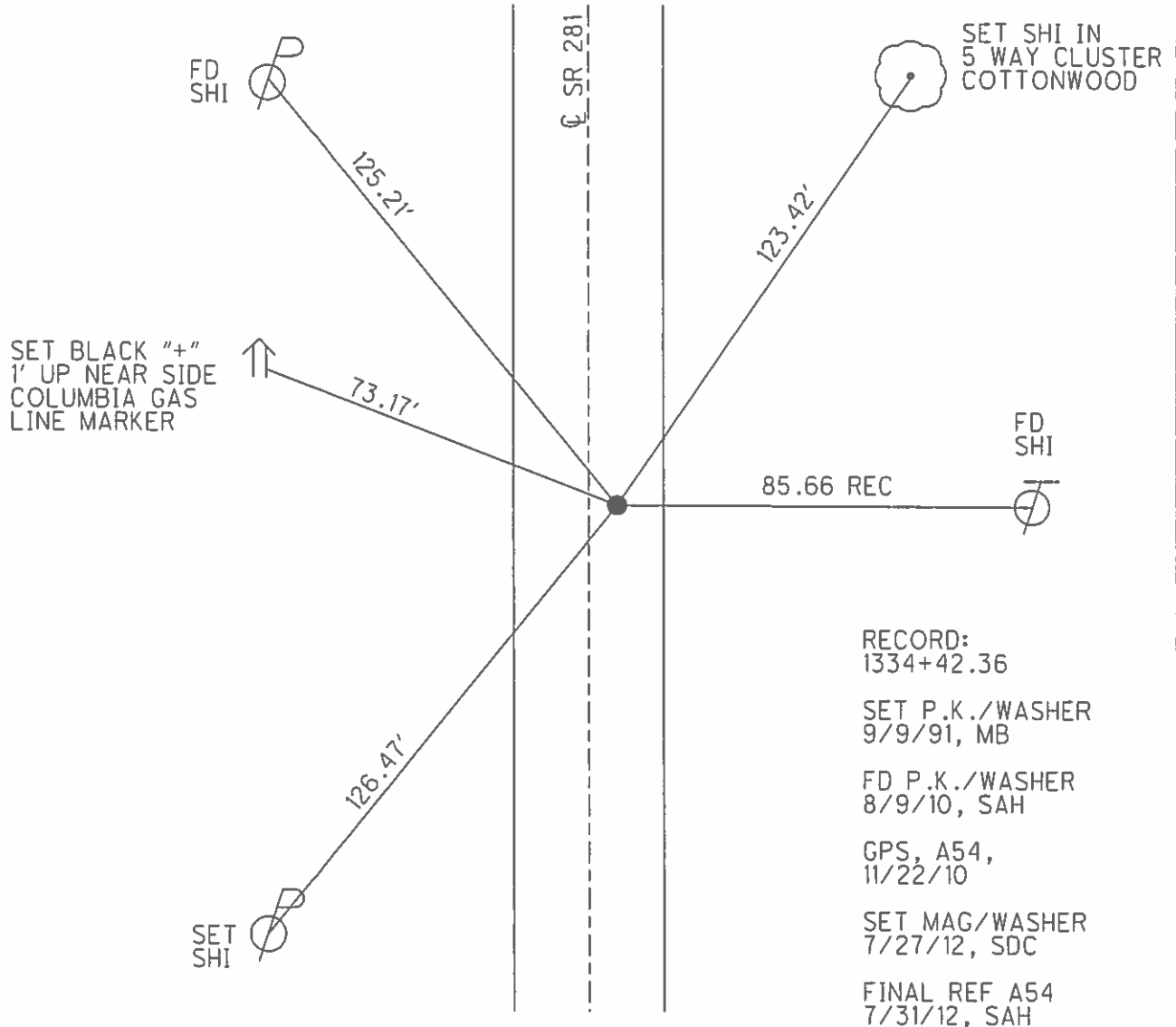
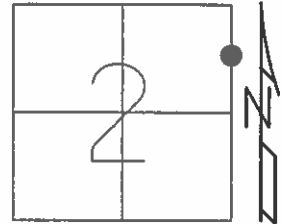
RECORD:
 STA.1334+42.36
 SET P.K./WASHER
 9/9/91, MB
 FD P.K./WASHER
 8/9/10, SAH
 SVA54,
 11/22/10
 4/12/12, MC
 SET MAG/WASHER
 7/27/12, SDC
 REFA54
 7/31/12, SAH
 D.N.F.
 6/14/23, TDN



O.D.O.T. DISTRICT 2 SURVEY OFFICE (USE ONLY)

PERSONNEL _____ REFERENCE NO. 54 A SHEET 47 OF 49
 NOTES HUSS DATE 4/12/12 ROUTE SR 281
 H.C. CANTERBURY WEATHER CLEAR COUNTY WOOD
 R.C. HUSS TEMP. 58° TOWNSHIP MONTGOMERY
 _____ SECTION 2
 _____ T 4 N R 12 E

TYPE MONUMENT P.K./WASHER
 ON SURFACE - ~~BELOW~~ ON
~~LEFT~~ ☉ PAV'T - RIGHT 4.2'
7.7' TO RT EDGE PAVEMENT
 S.L.M. 1334+13
 GRID: NORTHING: 610062.754 EASTING: 1711292.433



O.D.O.T. DISTRICT 2 SURVEY OFFICE (USE ONLY)

PERSONNEL

REFERENCE NO. 54 A

SHEET 47 OF 49

NOTES HUSS

DATE 4/12/12

ROUTE SR 281

H.C. CANTERBURY

WEATHER CLEAR

COUNTY WOOD

R.C. HUSS

TEMP. 58°

TOWNSHIP MONTGOMERY

SECTION 2

T 4 N R 12 E

TYPE MONUMENT P.K./WASHER

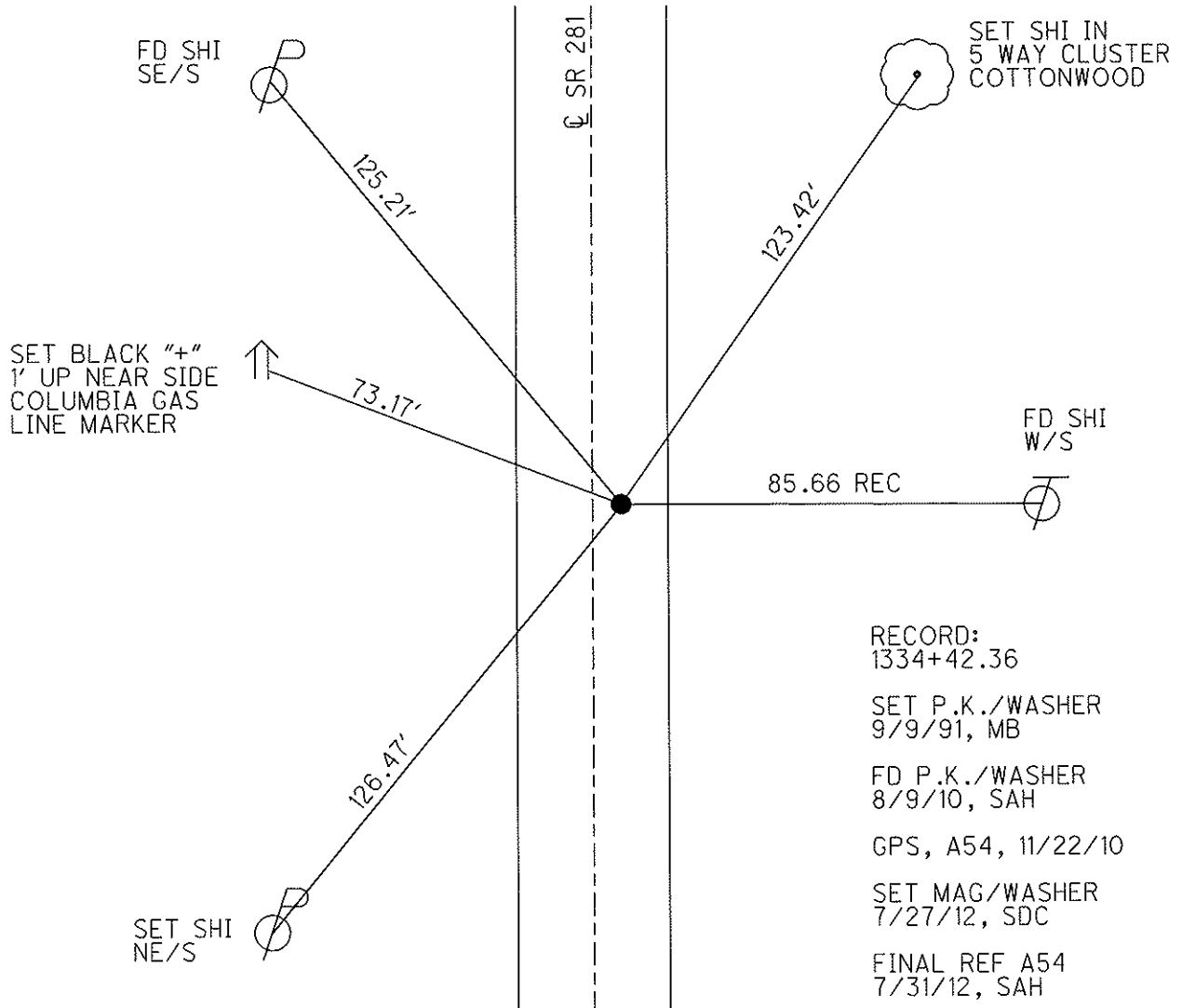
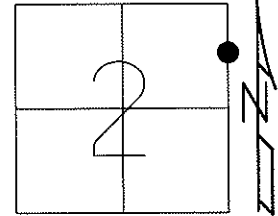
ON SURFACE - ~~BELOW~~ ON

~~LEFT~~ - Q PAV'T - RIGHT 4.2'

7.7' TO RT EDGE PAVEMENT

S.L.M. 1334.13

Grid: Northing: 610062.754 Easting: 1711292.433



O.D.O.T. DISTRICT 2 SURVEY OFFICE

PERSONNEL

REFERENCE NO. 54

SHEET OF

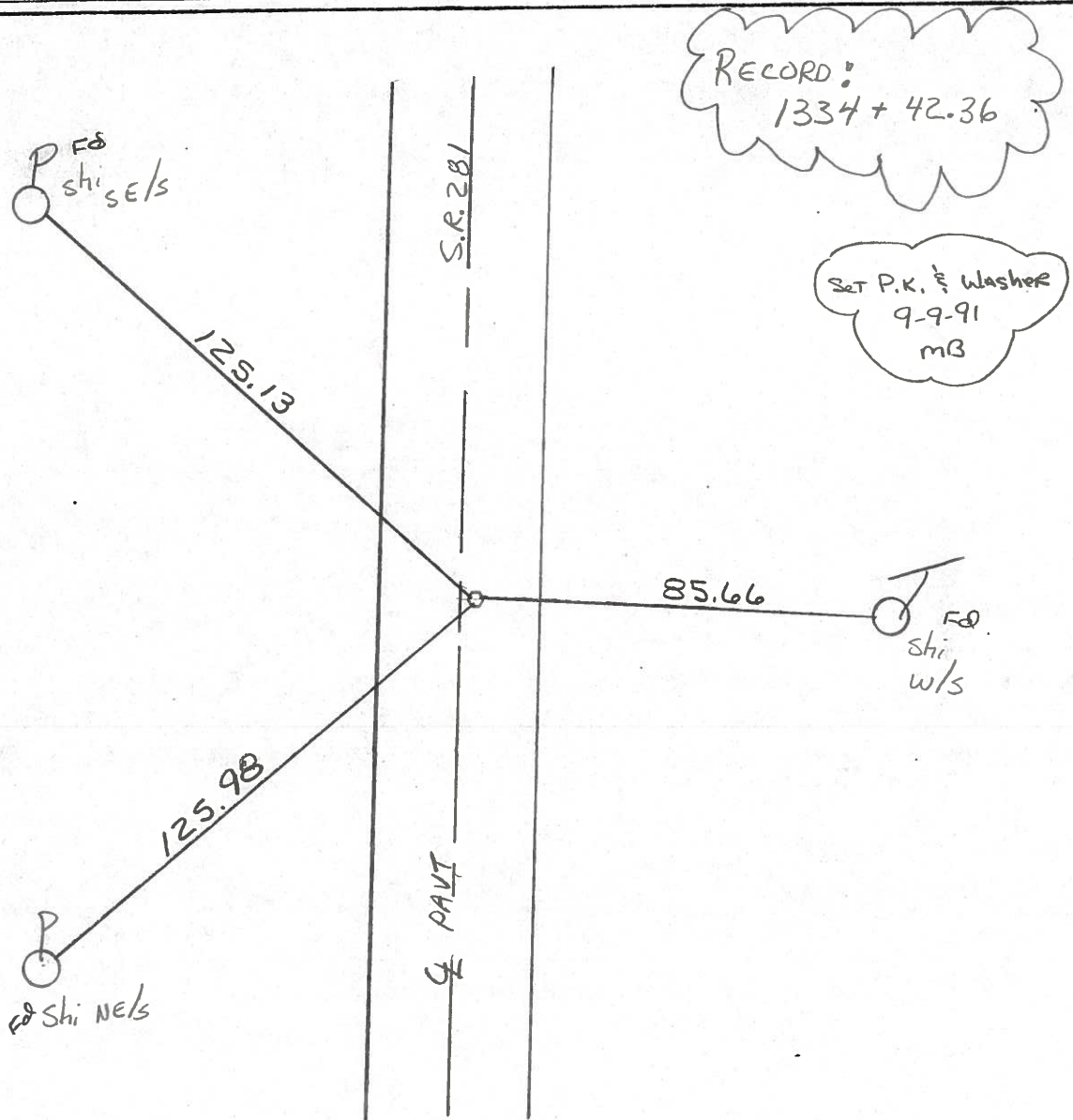
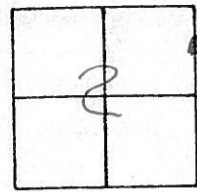
NOTES LOEHRKE
 H.C. VAN DUSEN
 R.C. KUSZ
BAENHISEK

DATE 7-30-91
 WEATHER Clear
 TEMP. +80°

ROUTE S.R. 281
 COUNTY Wood
 TOWNSHIP MONTGOMERY
 SECTION 2
T 4 N R 12 E

TYPE MONUMENT P.K. & Washer
 ON SURFACE - ~~BELOW~~ yes
 LEFT - ~~C~~ PAV'T. - RIGHT 4.2
9.4 TO RT. EDGE PAVEMENT
 S.L.M. 1334+13

54-A



County WOOD S.R. 281

Township MONTGOMERY

Section 2

T4N, R12E

Personnel HOFFMAN

54-A

54

LOEHRKE

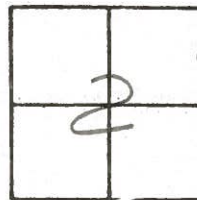
HOUSEHOLDER RC

BARNHISEL HC

Date 1-18-84

Weather SNOW

Temp. 15°



Fd R.R. SPR @ SURFACE

2.8' RT. of R PAVT

SLM 1334+12

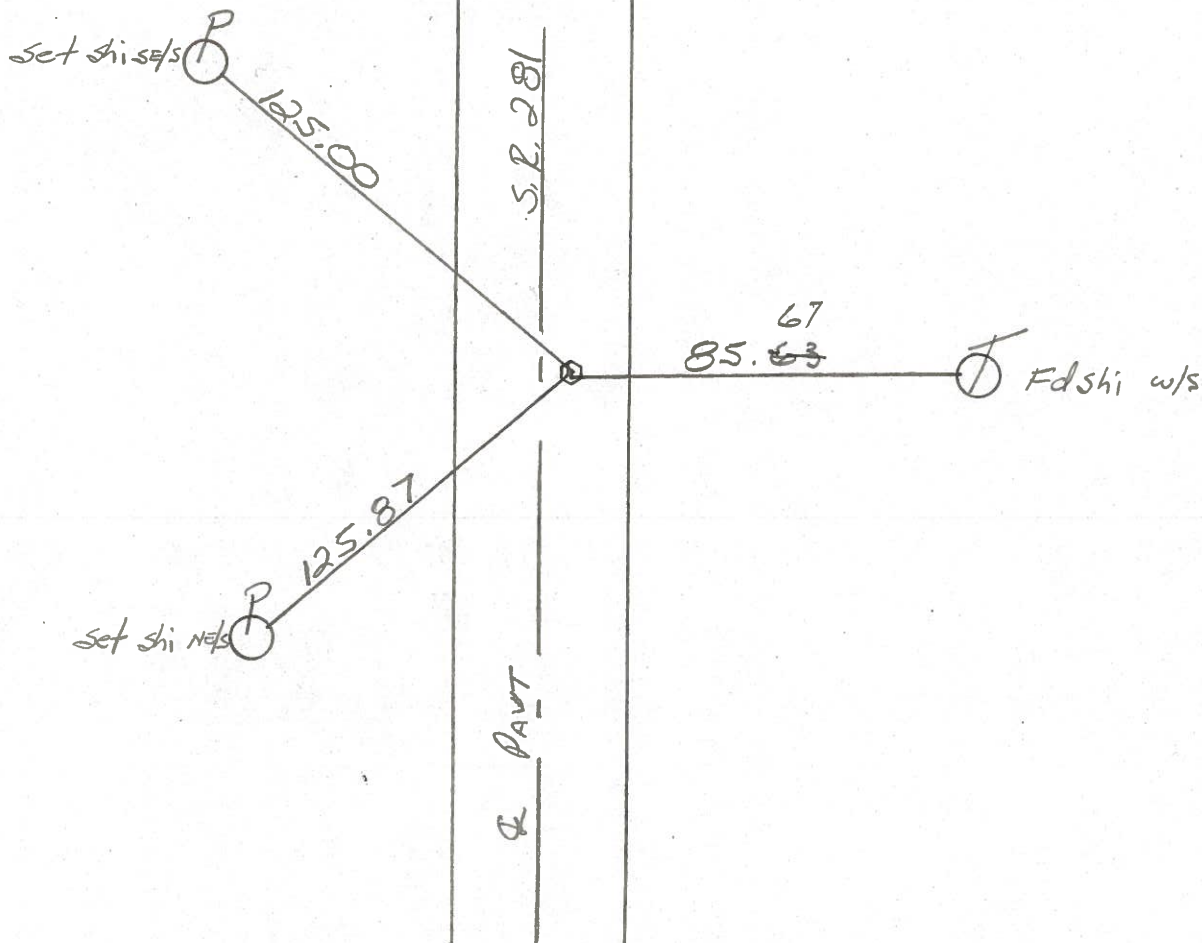
Set P.K./Washer

8-20-84

S.W.H.

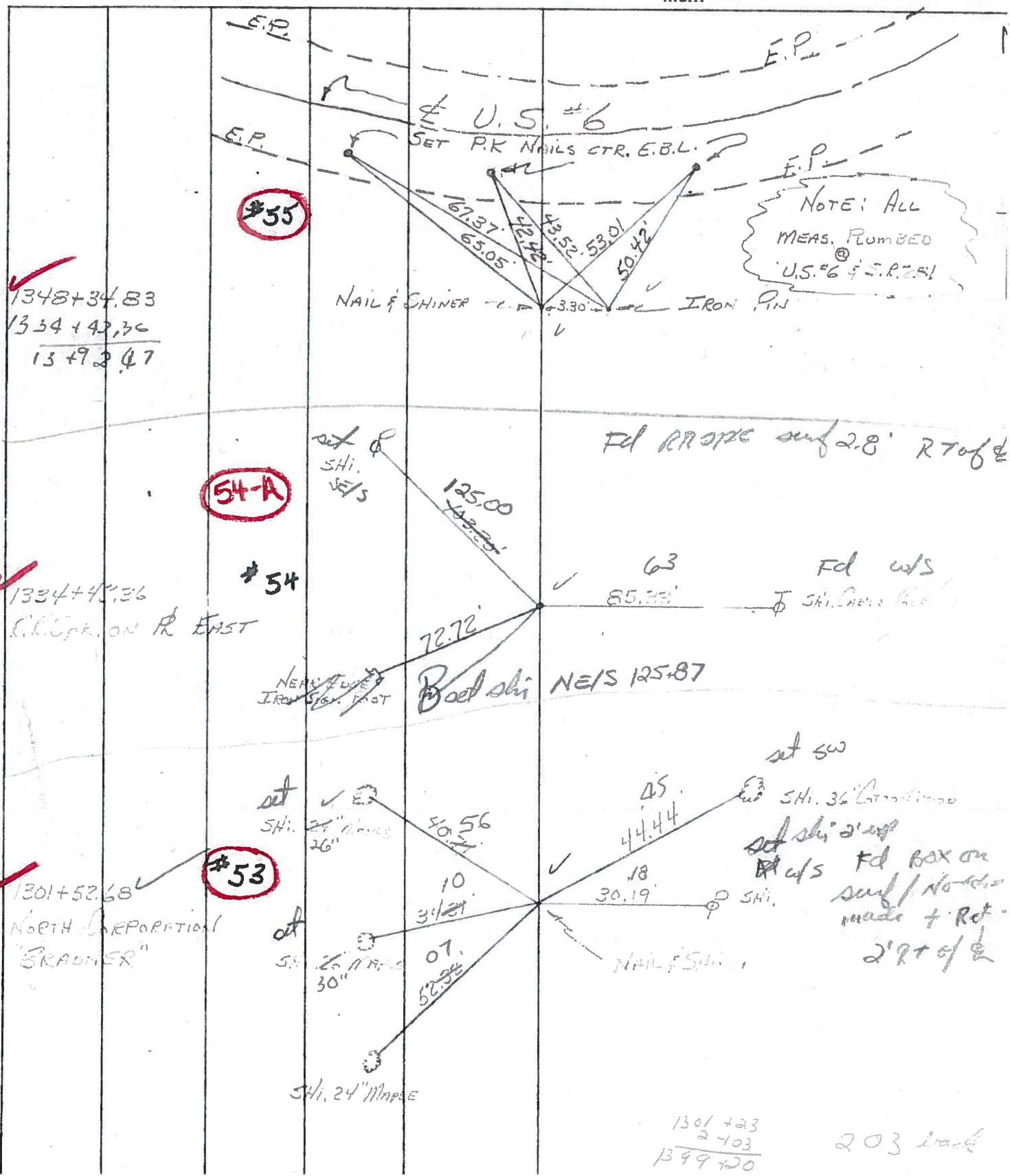
Record:

1334+42.36



PERSONNEL BURNSIDE TITLE _____ PERSONNEL HOFFMAN TITLE _____ COUNTY WOOD DATE 5-7-70
 PERSONNEL POWERS TITLE _____ S. R. #281 WEATHER CLEAR
 PERSONNEL HILCOMBE TITLE _____ SEC. _____ TEMP. +62°

DESCRIPTION CONTROL TIES LEFT CENTER LINE RIGHT JOB NO. _____



PERSONNEL TITLE PERSONNEL TITLE
BURNSIDE _____
HOFFMAN _____
BOWERS _____
HOLLOMBE _____

COUNTY WOOD DATE 5-7-70
 S. R. #281 WEATHER CLEAR
 SEC. _____ TEMP. +62°

DESCRIPTION CONTROL TIES JOB NO. _____

