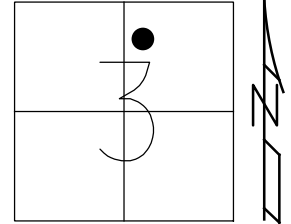


O.D.O.T. DISTRICT 2 SURVEY OFFICE (USE ONLY)

PERSONNEL _____ REFERENCE NO. 0 A SHEET 1 OF 16
 NOTES CHENEY DATE 11/5/91 ROUTE SR 579
 H.C. BARBOUR WEATHER CLOUDY COUNTY WOOD
 R.C. RIPPLE TEMP. 35° TOWNSHIP LAKE
 GEYMAN SECTION 3
 DWG BY MILLER PID 97012 T 7 N R 12 E

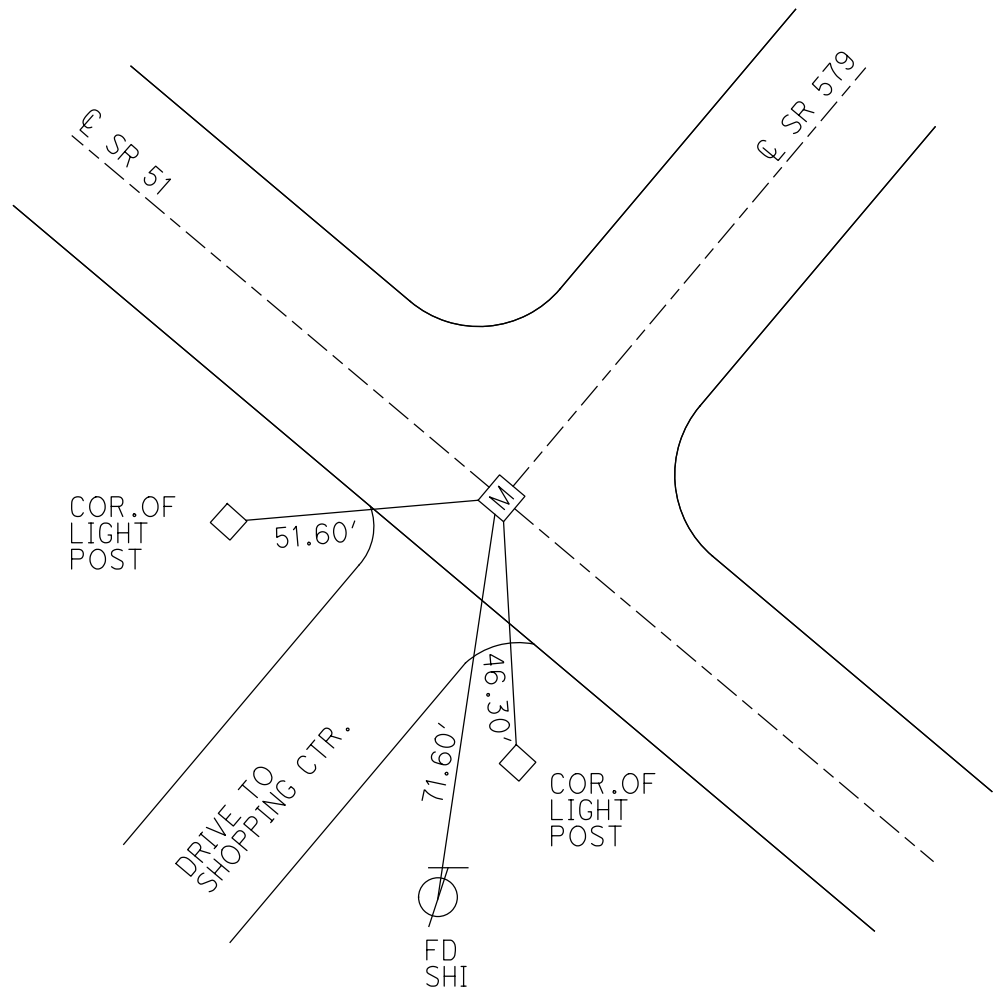
TYPE MONUMENT MONBOX W/1" IPIN
 ON SURFACE - ~~BELOW~~ ON
 OFFSET C PAVEMENT ON LT : RT
- TO - EDGE PAVEMENT
 STATION: 0+00

HORZ. DATUM: NAD83(2011) GEOID: GEOID12A
 GRID: NORTHING: 705849.863 EASTING: 1705499.69



RECORD:
 56+45 = 0.00
 RELOCATED
 STA. 170+55
 FD MONBOX
 W/ 1" IPIN
 REF1
 7-13-16, JLL

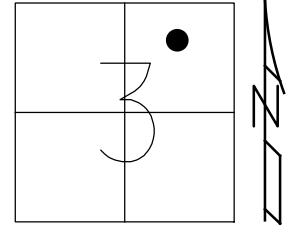
NOTE: SR 51 REF 14A



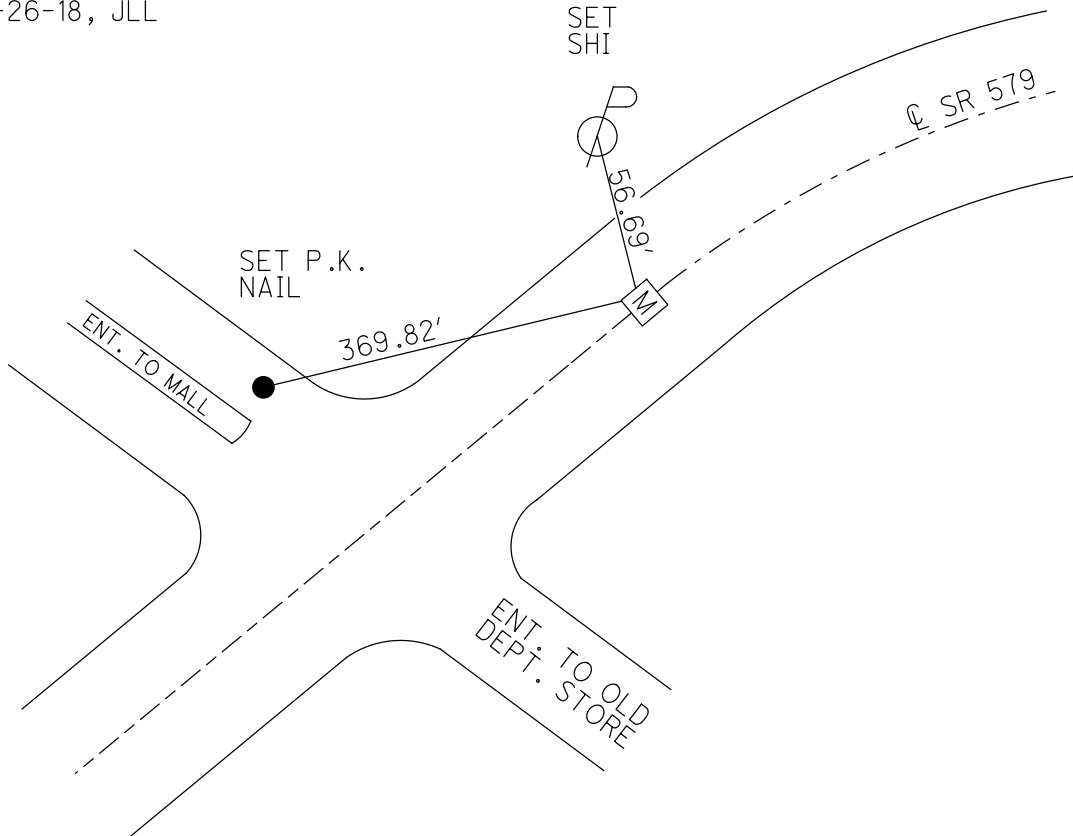
O.D.O.T. DISTRICT 2 SURVEY OFFICE (USE ONLY)

PERSONNEL _____ REFERENCE NO. 0 B SHEET 2 OF 16
 NOTES BARNHISEL DATE 9/18/02 ROUTE SR 579
 H.C. CANTERBURY WEATHER SUNNY COUNTY WOOD
 R.C. BARNHISEL TEMP. 70° TOWNSHIP LAKE
HUSS SECTION 3
 T 7 N R 12 E

TYPE MONUMENT MONBOX
 ON SURFACE - ~~BELOW~~ ON
 LEFT - ☉ PAV'T - RIGHT ON
- TO - EDGE PAVEMENT
 S.L.M. 4+98.76
 Grid: Northing: - Easting: -



RECORD: P.C.
 STA. 4+98.41
 1967
 FD MONBOX
 CONC. ISLAND
 9/18/02, MB
 DNF
 7-13-16
 6-26-18, JLL



O.D.O.T. DISTRICT 2 SURVEY OFFICE (USE ONLY)

PERSONNEL

REFERENCE NO. 0 C

SHEET 3 OF 16

NOTES BARNHEISEL

DATE 9/18/02

ROUTE SR 579

H.C. CANTERBURY

WEATHER SUNNY

COUNTY WOOD

R.C. BARNHEISEL

TEMP. 70°

TOWNSHIP LAKE

HUSS

SECTION 3

T 7 N R 12 E

TYPE MONUMENT SURVEY CAPS

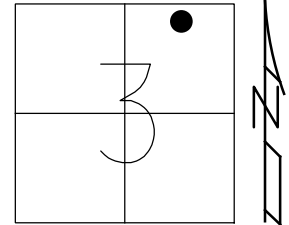
ON SURFACE - BELOW -

LEFT - ☉ PAV'T - RIGHT -

21' TO LT EDGE PAVEMENT

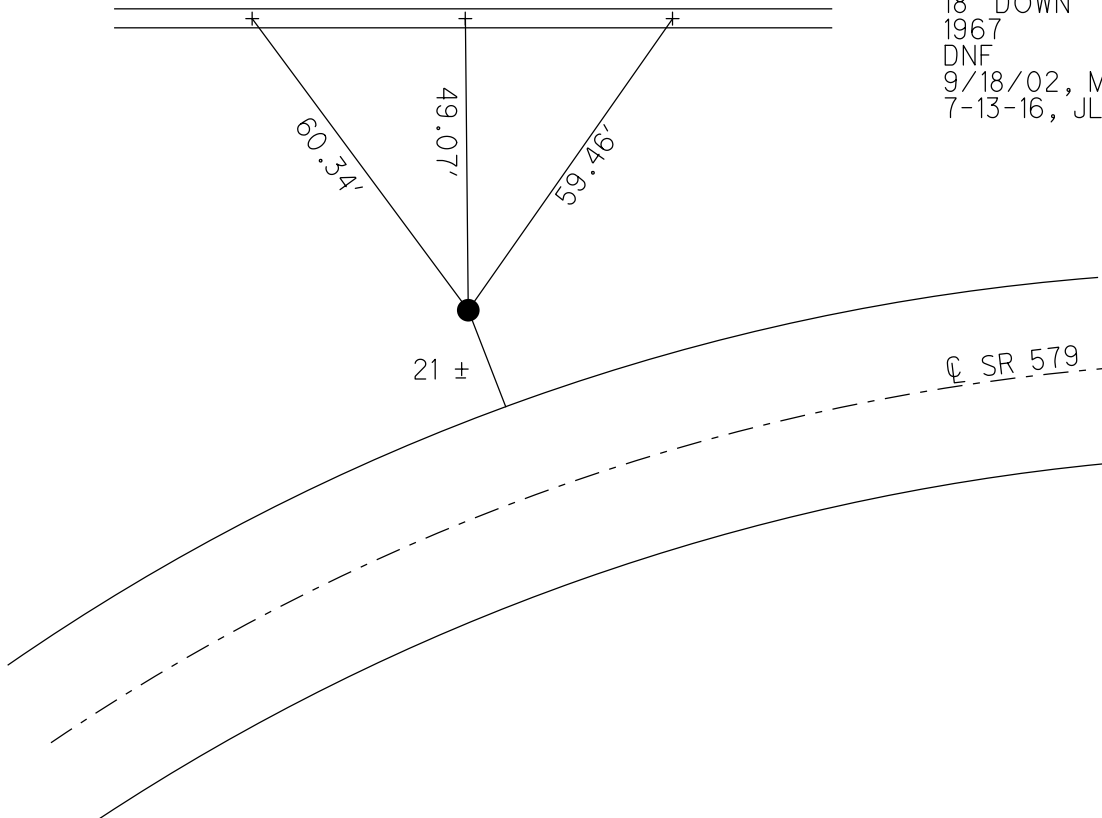
S.L.M. 7+27.99

Grid: Northing: - Easting: -



PARKING LOT - WOODVILLE MALL

"+" IN CONC. CURB



RECORD: P.I.
 STA. 10+72.33
 $\Delta = 47^\circ 34'$
 $D = 11^\circ 00'$
 $R = 520.87'$
 $T = 229.55'$
 $L = 432.42'$
 $E = 48.34'$
 6.0' LT ☉ SURVEY
 SURVEY CAPS SET
 18" DOWN
 1967
 DNF
 9/18/02, MB
 7-13-16, JLL

O.D.O.T. DISTRICT 2 SURVEY OFFICE (USE ONLY)

PERSONNEL

REFERENCE NO. 1

SHEET 4 OF 16

NOTES HAGEMEYER

DATE 5/29/18

ROUTE SR 579

H.C. LEU

WEATHER SUNNY

COUNTY WOOD

R.C. HAGEMEYER

TEMP. 73°

TOWNSHIP LAKE

SECTION 3

DWG BY MILLER

PID 97012

T 7 N R 12 E

TYPE MONUMENT MONBOX W/ 1" IPIN

ON SURFACE - ~~BELOW~~ ON

OFFSET ϕ PAVEMENT 0.9' ~~LT~~ : RT

30.1' TO RT EDGE PAVEMENT

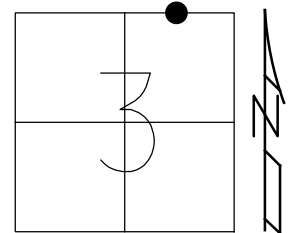
STATION: 9+30.58

HORZ. DATUM: NAD83(2011)

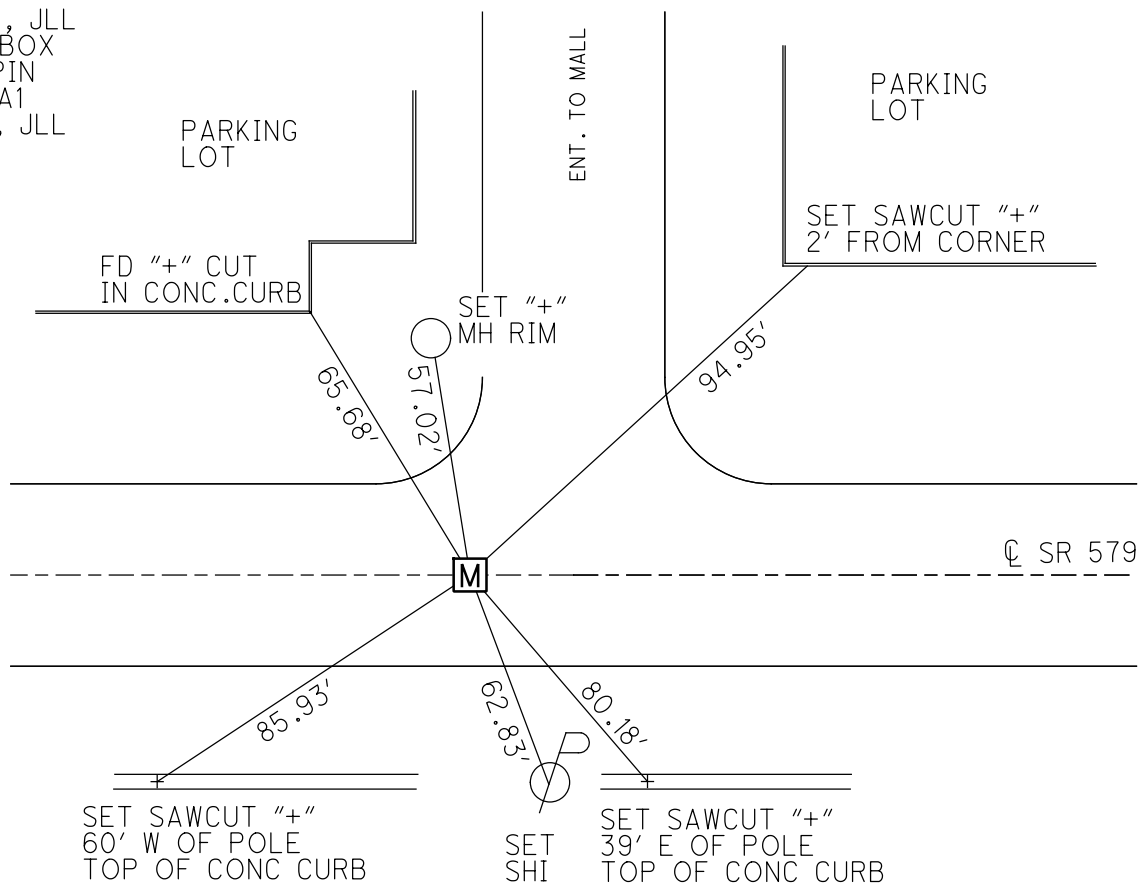
GEOID: GEOID12A

GRID: NORTHING: 706384.371

EASTING: 1706222.176



RECORD: P.T.
 STA. 9+30.83
 SURVEY CAPS SET
 18" DOWN
 1967
 FD MONBOX
 W/ 1" IPIN
 7-13-16
 7-30-18, JLL
 FD MONBOX
 W/ 1" IPIN
 NEWREFA1
 12-5-18, JLL



O.D.O.T. DISTRICT 2 SURVEY OFFICE (USE ONLY)

PERSONNEL

REFERENCE NO. 1 A

SHEET 5 OF 16

NOTES HAGEMEYER

DATE 5/29/18

ROUTE SR 579

H.C. LEU

WEATHER SUNNY

COUNTY WOOD

R.C. HAGEMEYER

TEMP. 73°

TOWNSHIP LAKE

SECTION 3

DWG BY MILLER

PID 97012

T 7 N R 12 E

TYPE MONUMENT CMON W/ 1 1/2" I-BOLT

ON SURFACE - ~~BELOW~~ ON

OFFSET Q PAVEMENT 6.1' ~~LT~~ : RT

21.5' TO RT EDGE PAVEMENT

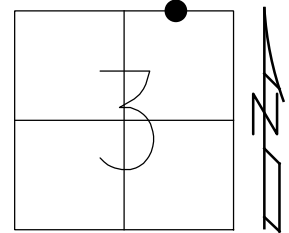
STATION: 14+86.6

HORIZ.DATUM: NAD83(2011)

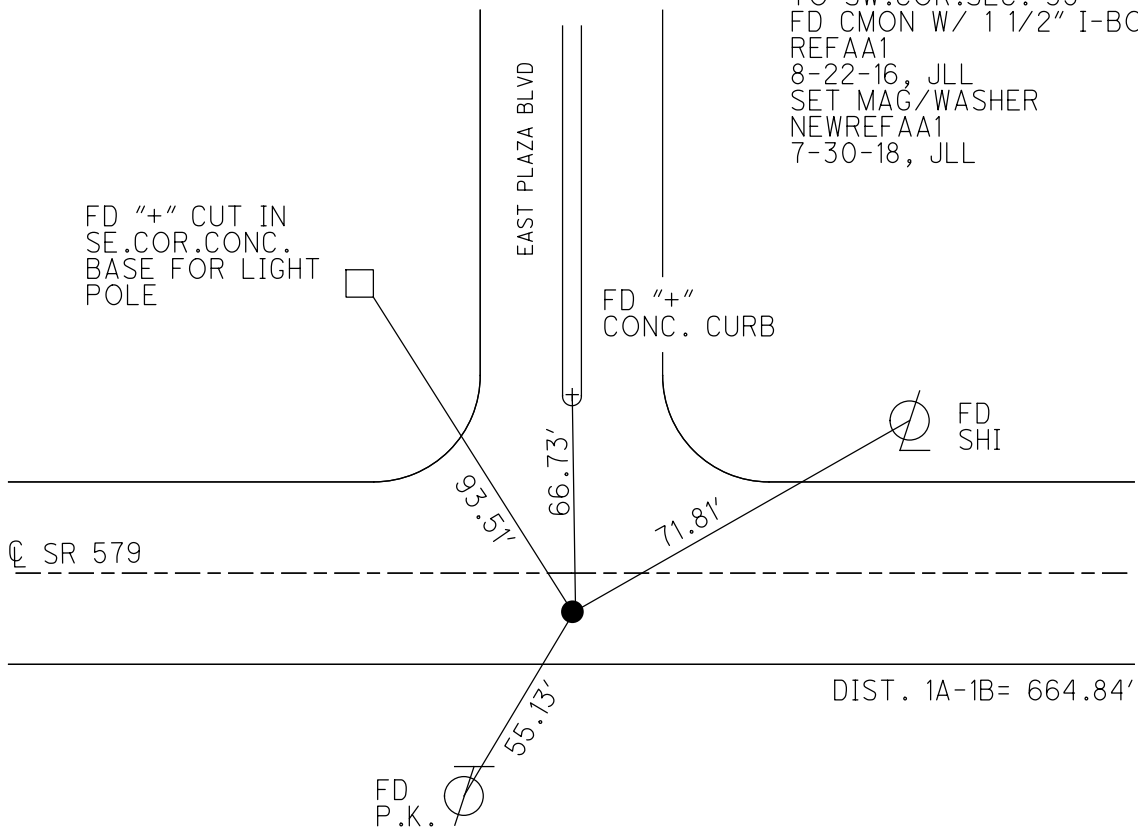
GEOID: GEOID12A

GRID: NORTHING: 706376.280

EASTING: 1706772.233



RECORD:
 SURVEYED BY J.C.ANDRUS
 1/9/67. 664.84' REC.DIST.
 TO SW.COR.SEC. 35
 FD CMON W/ 1 1/2" I-BOLT
 REFAA1
 8-22-16, JLL
 SET MAG/WASHER
 NEWREFAA1
 7-30-18, JLL



O.D.O.T. DISTRICT 2 SURVEY OFFICE (USE ONLY)

PERSONNEL

REFERENCE NO. 1 B

SHEET 6 OF 16

NOTES HAGEMEYER

DATE 5/30/18

ROUTE SR 579

H.C. LEU

WEATHER CLOUDY

COUNTY WOOD

R.C. HAGEMEYER

TEMP. 84°

TOWNSHIP LAKE

SECTION 3

DWG BY MILLER

PID 97012

T 7 N R 12 E

TYPE MONUMENT 1" ID. IPIPE W/CTR NAIL

~~ON SURFACE~~ - BELOW 13 1/2"

OFFSET 6.7' CL PAVEMENT 5.7' ~~LT~~ : RT

6.7' TO RT EDGE PAVEMENT

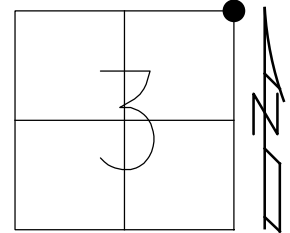
STATION: 21+04.42

HORZ. DATUM: NAD83(2011)

GEOID: GEOID12A

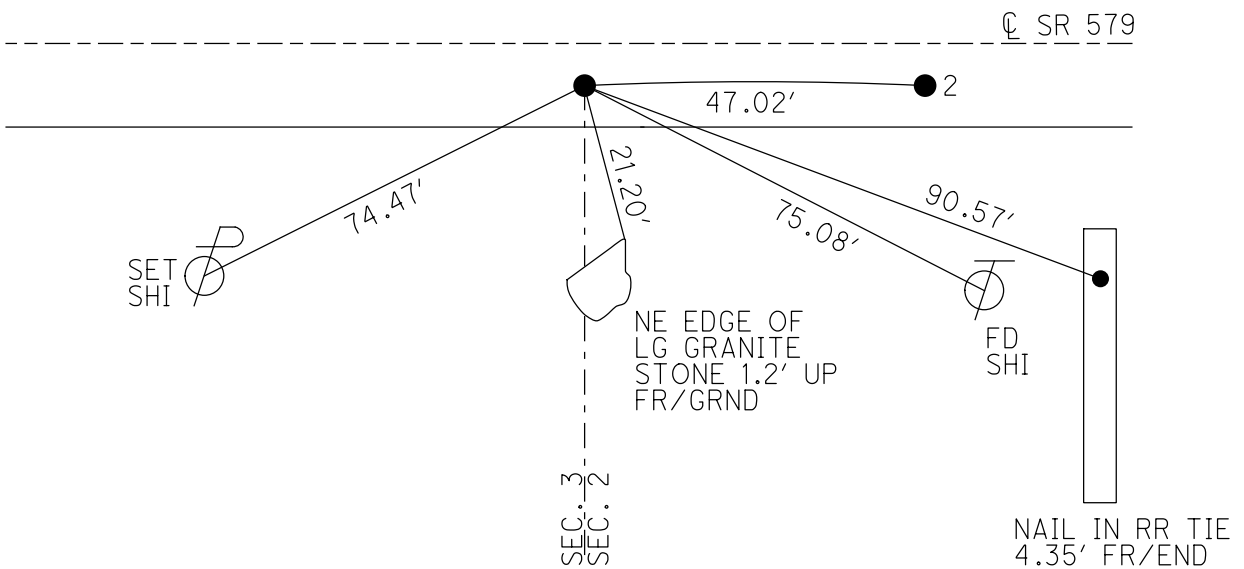
GRID: NORTHING: 706374.452

EASTING: 1707390.043



RECORD:
 SET MAG/WASHER
 3-29-04, MB
 HELD 2 REF TIES
 METAL CLOSE DO
 NOT KNOW WHAT
 REFB1
 8-22-16, JLL
 SET MAG/WASHER
 NEWREFB1
 7-30-18, JLL

DIST. 1A-1B= 664.84'

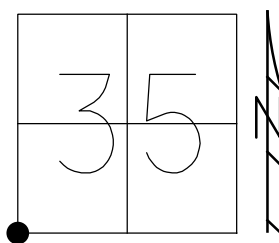


O.D.O.T. DISTRICT 2 SURVEY OFFICE (USE ONLY)

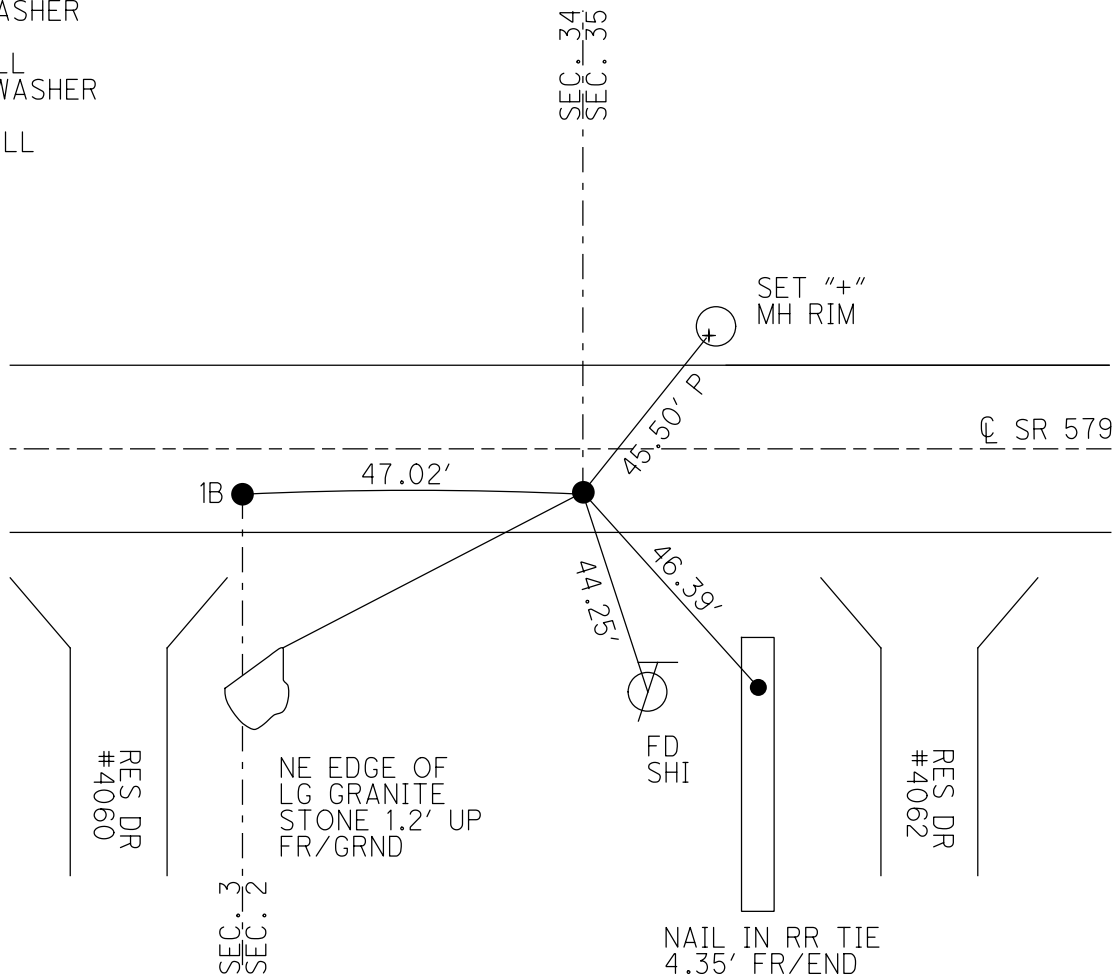
PERSONNEL _____ REFERENCE NO. 2 SHEET 7 OF 16
 NOTES HAGEMeyer DATE 5-29-18 ROUTE SR 579
 H.C. LEU WEATHER SUNNY COUNTY WOOD
 R.C. HAGEMeyer TEMP. 82° TOWNSHIP LAKE
 _____ SECTION 35
 DWG BY MILLER PID 97012 T 7 N R 12 E

TYPE MONUMENT _____ MAG/WASHER
 ON SURFACE - ~~BELOW~~ _____ ON _____
 OFFSET Q PAVEMENT 6.3' ~~LT~~ : RT
5.2' TO RT EDGE PAVEMENT
 STATION: 21+51.47

HORZ. DATUM: NAD83(2011) GEOID: GEOID12A
 GRID: NORTHING: 706373.742 EASTING: 1707437.060



RECORD:
 SET MAG/WASHER
 3-29-04, MB
 FD MAG/WASHER
 REF2
 7-13-16, JLL
 SET MAG/WASHER
 NEWREF2
 7-30-18, JLL



O.D.O.T. DISTRICT 2 SURVEY OFFICE (USE ONLY)

PERSONNEL

REFERENCE NO. 2 A

SHEET 8 OF 16

NOTES HAGEMEYER

DATE 5/29/18

ROUTE SR 579

H.C. LEU

WEATHER SUNNY

COUNTY WOOD

R.C. HAGEMEYER

TEMP. 84°

TOWNSHIP LAKE

SECTION 35

DWG BY MILLER PID 97012

T 7 N R 12 E

TYPE MONUMENT MAG/WASHER

ON SURFACE - ~~BELOW~~ ON

OFFSET 6.3' RT : RT

4.8' TO RT EDGE PAVEMENT

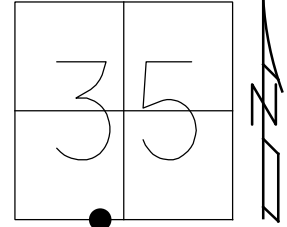
STATION: 41+39.94

HORIZ.DATUM: NAD83(2011)

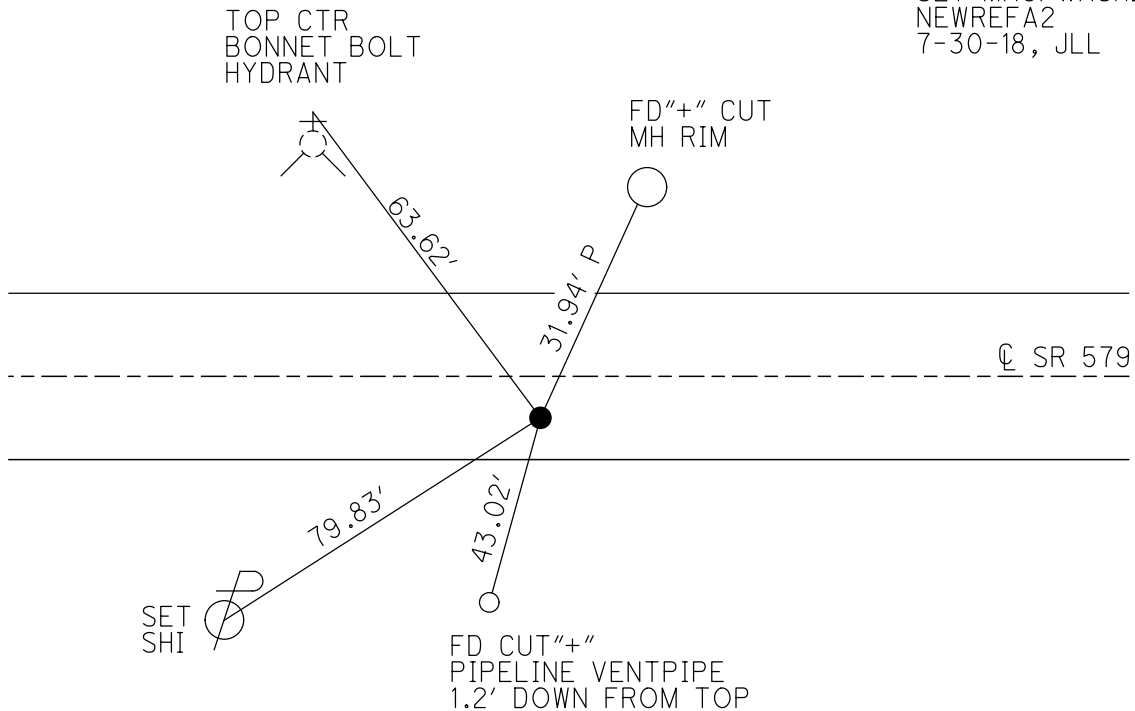
GEOID: GEOID12A

GRID: NORTHING: 706371.702

EASTING: 1709425.501



RECORD:
 P.K./WASHER
 9-18-02, MB
 SET MAG/WASHER
 11-27-02, MB
 FD MAG/WASHER
 REFA2
 8-22-16, JLL
 SET MAG/WASHER
 NEWREFA2
 7-30-18, JLL



O.D.O.T. DISTRICT 2 SURVEY OFFICE (USE ONLY)

PERSONNEL

REFERENCE NO. 3

SHEET 9 OF 16

NOTES HAGEMeyer

DATE 5/29/18

ROUTE SR 579

H.C. LUE

WEATHER SUNNY

COUNTY WOOD

R.C. HAGEMeyer

TEMP. 84°

TOWNSHIP LAKE

SECTION 35

DWG BY MILLER

PID 97012

T 7 N R 12 E

TYPE MONUMENT MAG/WASHER

ON SURFACE - ~~BELOW~~ ON

OFFSET \varnothing PAVEMENT 6.6' ~~LT~~ : RT

4.4' TO RT EDGE PAVEMENT

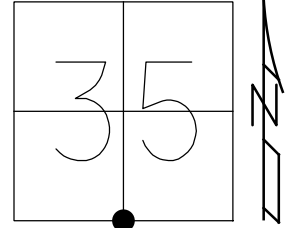
STATION: 48+03.75

HORZ. DATUM: NAD83(2011)

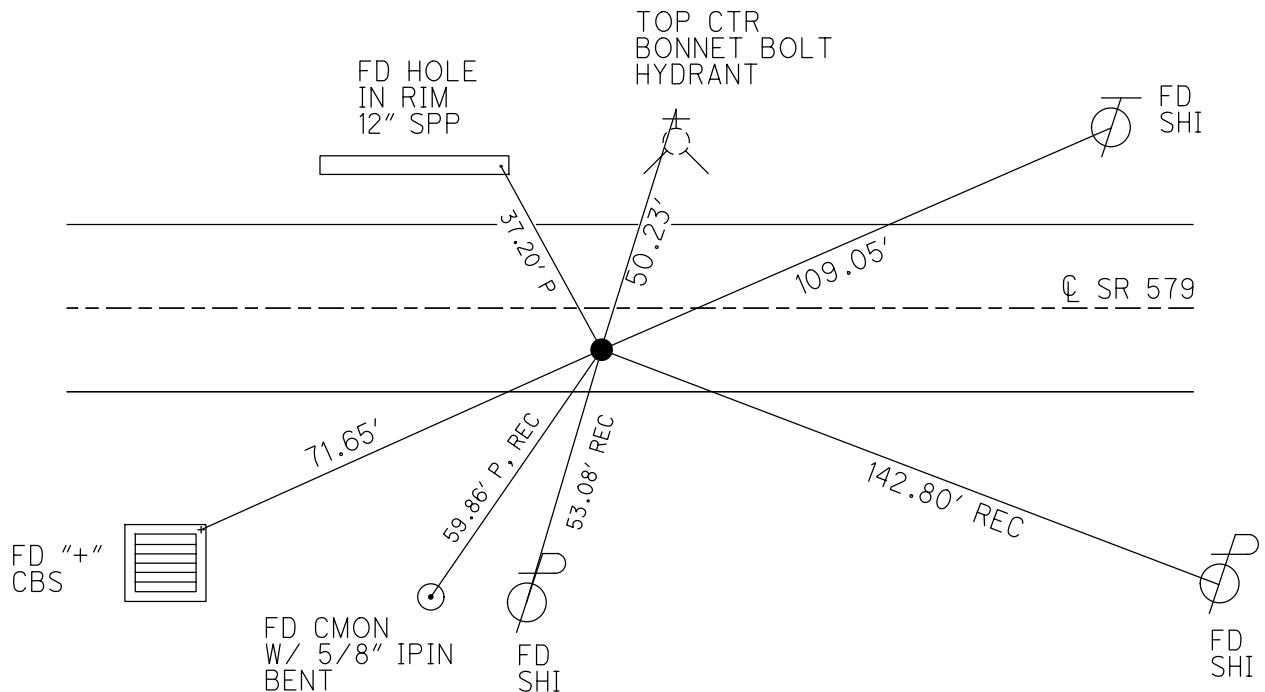
GEOID: GEOID12A

GRID: NORTHING: 706370.883

EASTING: 1710089.354



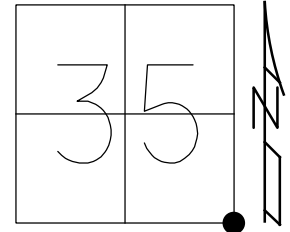
RECORD:
 P.K./WASHER
 9-18-02, MB
 SET MAG/WASHER
 11-27-02, MB
 FD MAG/WASHER
 REF3
 7-13-16, JLL
 SET MAG/WASHER
 NEWREF3
 7-30-18, JLL



O.D.O.T. DISTRICT 2 SURVEY OFFICE (USE ONLY)

PERSONNEL _____ REFERENCE NO. 4 SHEET 10 OF 16
 NOTES HAGEMEYER DATE 5/29/18 ROUTE SR 579
 H.C. LUE WEATHER SUNNY COUNTY WOOD
 R.C. HAGEMEYER TEMP. 86° TOWNSHIP LAKE
 DWG BY NIESE PID NO PID SECTION 35
 T 7 N R 12 E

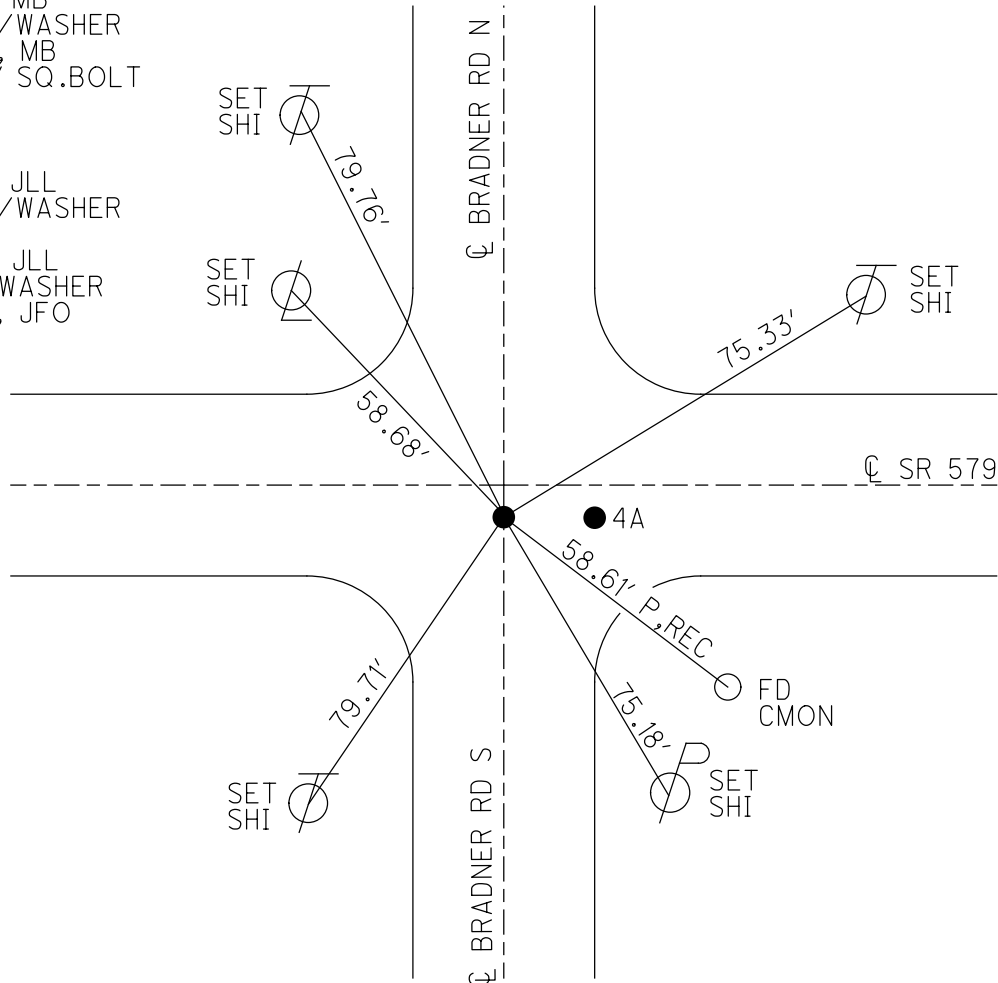
TYPE MONUMENT 1 1/4" SQ. BOLT
~~ON SURFACE~~ - BELOW 8"
 OFFSET \varnothing PAVEMENT 2.3' ~~RT~~ : RT
- TO - EDGE PAVEMENT
 STATION: 74+42.51



HORIZ.DATUM: NAD83(2011) GEOID: 2012A
 GRID: NORTHING: 706372.288 EASTING: 1712728.007

RECORD:
 FD P.K./WASHER
 9-18-02, MB
 SET MAG/WASHER
 11-27-02, MB
 FD 1 1/4" SQ.BOLT
 8" DOWN
 REF4
 7-13-16
 5-29-18, JLL
 SET MAG/WASHER
 NEWREF4
 7-30-18, JLL
 FD MAG/WASHER
 9/30/19, JFO

DIST.4-4A = 18.48'



O.D.O.T. DISTRICT 2 SURVEY OFFICE (USE ONLY)

PERSONNEL

REFERENCE NO. 4 AA

SHEET 11 OF 16

NOTES HAGEMEYER

DATE 5/29/18

ROUTE SR 579

H.C. LUE

WEATHER SUNNY

COUNTY WOOD

R.C. HAGEMEYER

TEMP. 86°

TOWNSHIP LAKE

SECTION 35

DWG BY MILLER

PID 97012

T 7 N R 12 E

TYPE MONUMENT MAG/WASHER

ON SURFACE - ~~BELOW~~ ON

OFFSET 2.6' ET : RT

- TO - EDGE PAVEMENT

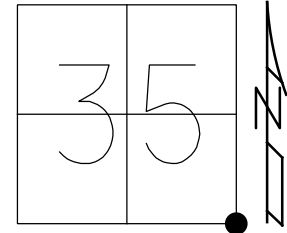
STATION: 74+60.99

HORZ. DATUM: NAD83(2011)

GEOID: GEOID12A

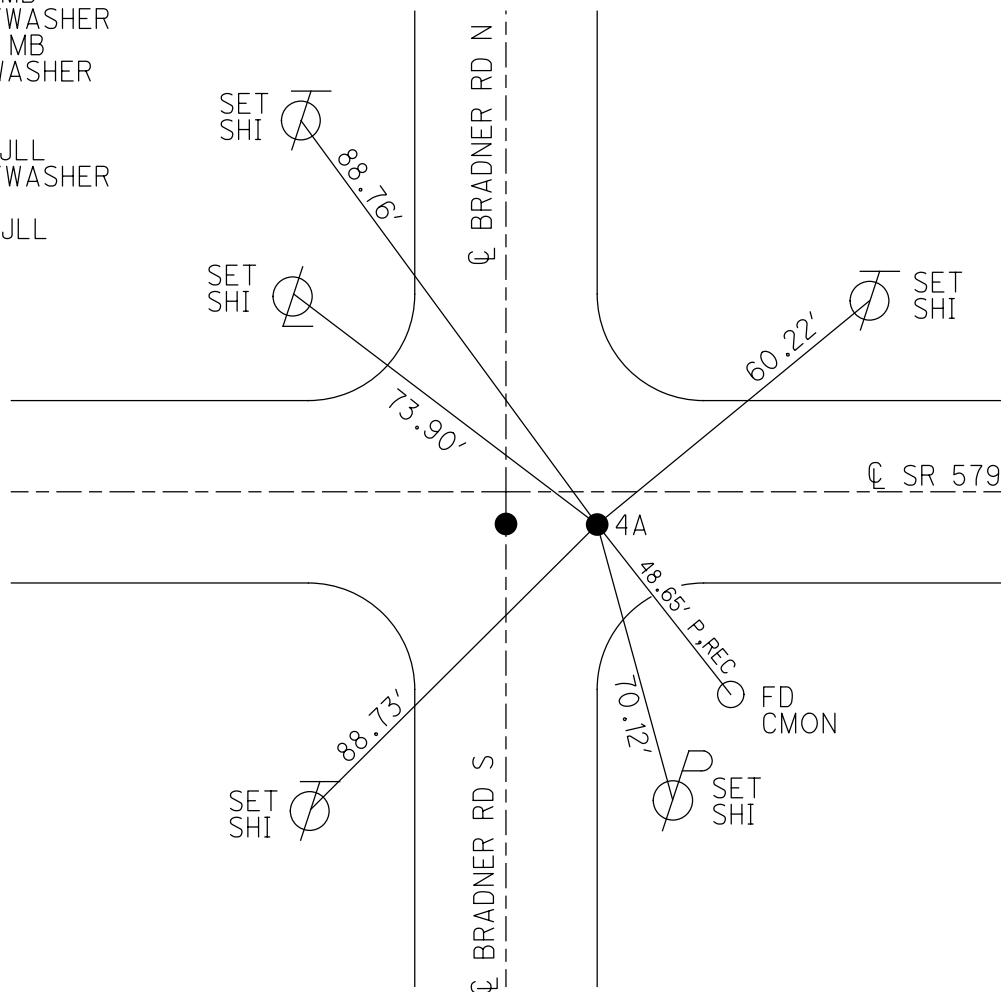
GRID: NORTHING: 706372.291

EASTING: 1712746.546



RECORD:
 FD P.K./WASHER
 9-18-02, MB
 SET MAG/WASHER
 11-27-02, MB
 FD MAG/WASHER
 REFA4
 7-13-16
 5-29-18, JLL
 SET MAG/WASHER
 NEWREFA4
 7-30-18, JLL

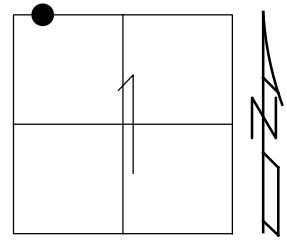
DIST. 4-4A = 18.48'



O.D.O.T. DISTRICT 2 SURVEY OFFICE (USE ONLY)

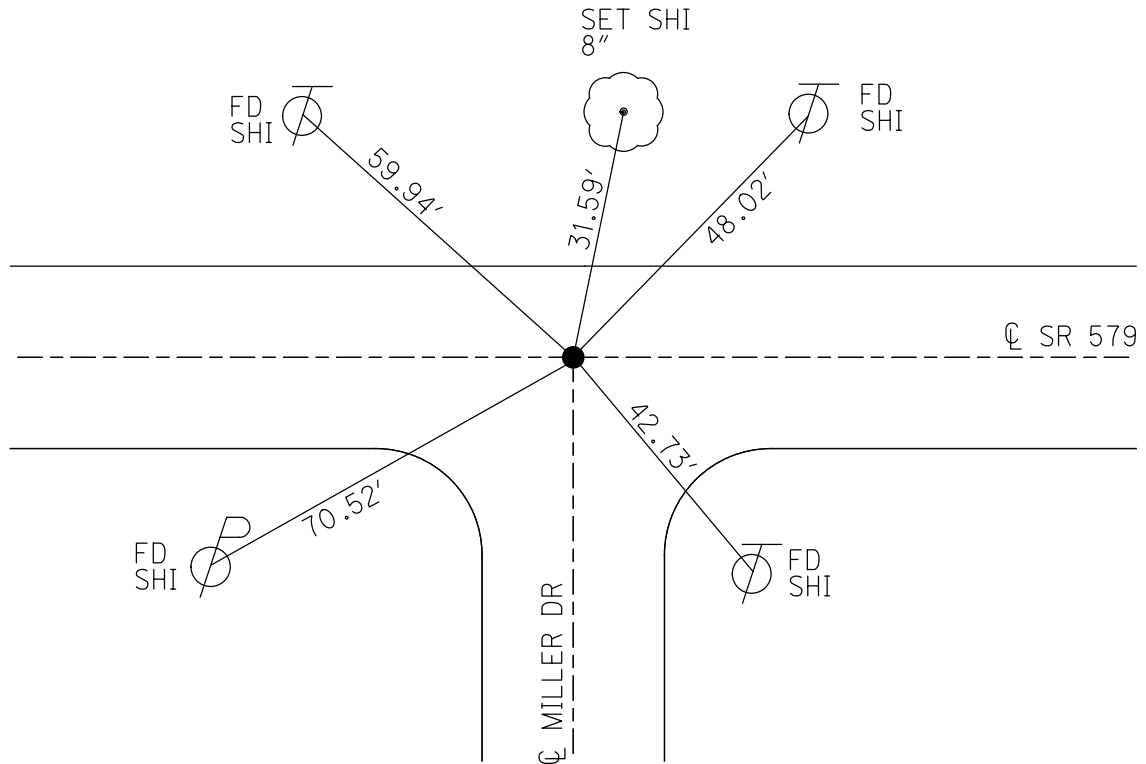
PERSONNEL _____ REFERENCE NO. 4 A SHEET 12 OF 16
 NOTES HAGEMeyer DATE 5/29/18 ROUTE SR 579
 H.C. LUE WEATHER SUNNY COUNTY WOOD
 R.C. HAGEMeyer TEMP. 88° TOWNSHIP LAKE
 SECTION 1
 DWG BY MILLER PID 97012 T 7 N R 12 E

TYPE MONUMENT _____ MAG/WASHER _____
 ON SURFACE - ~~BELOW~~ _____ ON _____
 OFFSET C PAVEMENT _____ ON _____ LT: RT _____
10.5' TO LT EDGE PAVEMENT
 STATION: 80+80.78



HORZ. DATUM: NAD83(2011) GEOID: GEOID12A
 GRID: NORTHING: 706371.747 EASTING: 1713366.327

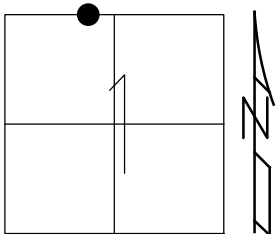
RECORD:
 FD P.K./WASHER
 9-18-02, MB
 SET PK/WASHER
 11-6-01, MB
 FD MAG/WASHER
 REFAA4
 8-22-16, JLL
 SET MAG/WASHER
 7-30-18, JLL



O.D.O.T. DISTRICT 2 SURVEY OFFICE (USE ONLY)

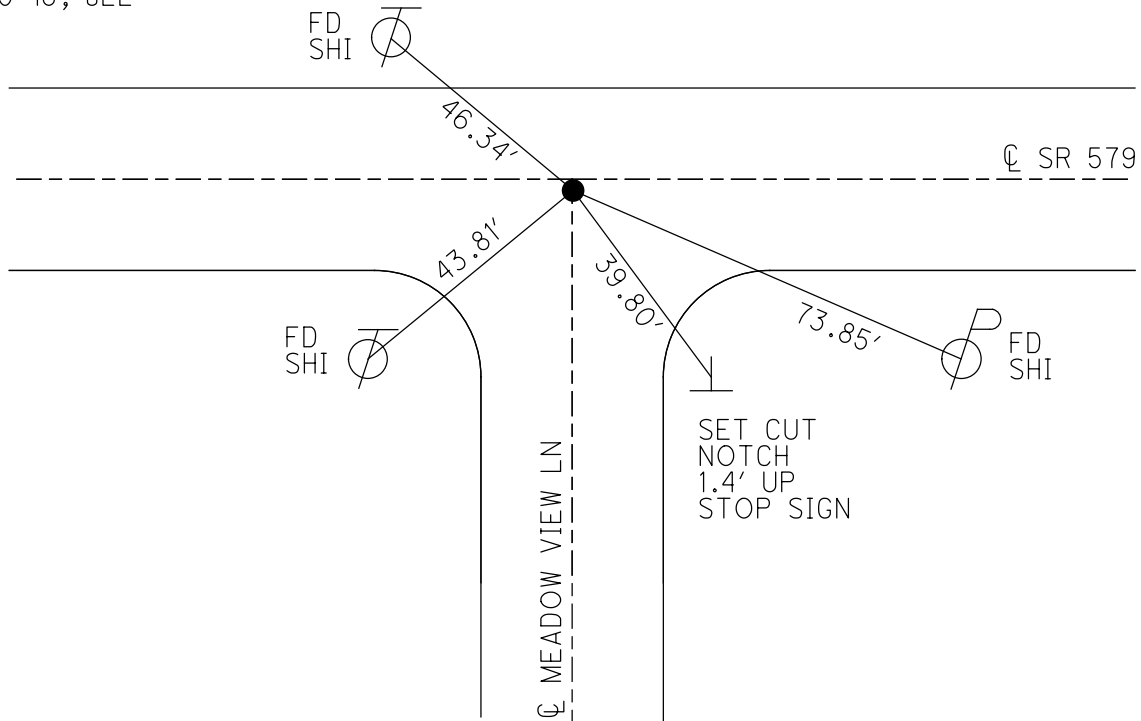
PERSONNEL _____ REFERENCE NO. 4 B SHEET 13 OF 16
 NOTES HAGEMeyer DATE 5/29/18 ROUTE SR 579
 H.C. LUE WEATHER SUNNY COUNTY WOOD
 R.C. HAGEMeyer TEMP. 88° TOWNSHIP LAKE
 DWG BY MILLER PID 97012 SECTION 1
 T 7 N R 12 E

TYPE MONUMENT P.K.NAIL
 ON SURFACE - ~~BELOW~~ ON
 OFFSET ☉ PAVEMENT 0.7' ~~LT~~ : RT
11.1' TO LT EDGE PAVEMENT
 STATION: 86+88.71



HORZ.DATUM: NAD83(2011) GEOID: GEOID12A
 GRID: NORTHING: 706369.459 EASTING: 1713974.289

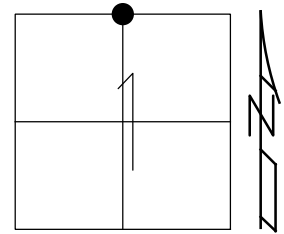
RECORD:
 FD P.K./WASHER
 2" DOWN
 8-30-02, MB
 SET P.K./WASHER
 11-6-01, MB
 FD P.K.NAIL
 REFB4
 8-22-16, JLL
 SET MAG/WASHER
 NEWREFB4
 7-30-18, JLL



O.D.O.T. DISTRICT 2 SURVEY OFFICE (USE ONLY)

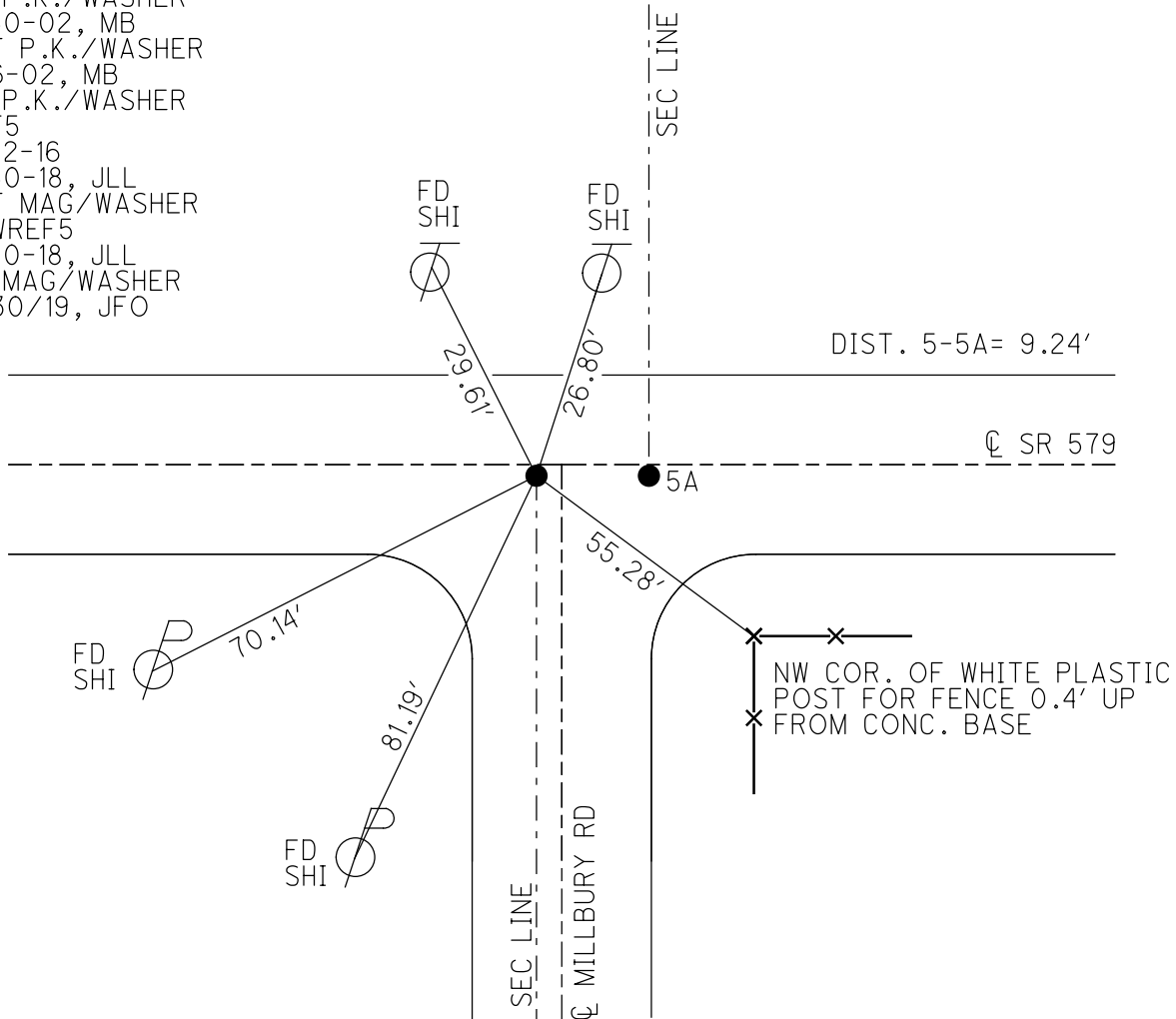
PERSONNEL _____ REFERENCE NO. 5 SHEET 14 OF 16
 NOTES HAGEMeyer DATE 5/30/18 ROUTE SR 579
 H.C. LUE WEATHER SUNNY COUNTY WOOD
 R.C. HAGEMeyer TEMP. 74° TOWNSHIP LAKE
 SECTION 1
 DWG BY NIESE PID NO PID T 7 N R 12 E

TYPE MONUMENT _____ P.K./WASHER _____
 ON SURFACE - ~~BELOW~~ ON _____
 OFFSET \odot PAVEMENT 1.6' RT
12.5' TO LT EDGE PAVEMENT
 STATION: 100+97.88



HORIZ.DATUM: NAD83(2011) GEOID: GEOID12A
 GRID: NORTHING: 706366.233 EASTING: 1715383.412

RECORD: P.I.
 FD P.K./WASHER
 8-30-02, MB
 SET P.K./WASHER
 11-6-02, MB
 FD P.K./WASHER
 REF5
 8-22-16
 5-30-18, JLL
 SET MAG/WASHER
 NEWREF5
 7-30-18, JLL
 FD MAG/WASHER
 9/30/19, JFO



O.D.O.T. DISTRICT 2 SURVEY OFFICE (USE ONLY)

PERSONNEL

REFERENCE NO. 5 A

SHEET 15 OF 16

NOTES HAGEMeyer

DATE 5/30/18

ROUTE SR 579

H.C. LUE

WEATHER SUNNY

COUNTY WOOD

R.C. HAGEMeyer

TEMP. 74°

TOWNSHIP LAKE

SECTION 1

DWG BY MILLER

PID 97012

T 7 N R 12 E

TYPE MONUMENT P.K./WASHER

ON SURFACE - ~~BELOW~~ ON

OFFSET Q PAVEMENT 1.7' ~~LT~~ : RT

12.5 TO LT EDGE PAVEMENT

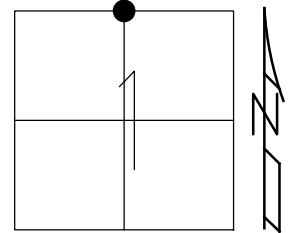
STATION: 101+07.12

HORZ. DATUM: NAD83(2011)

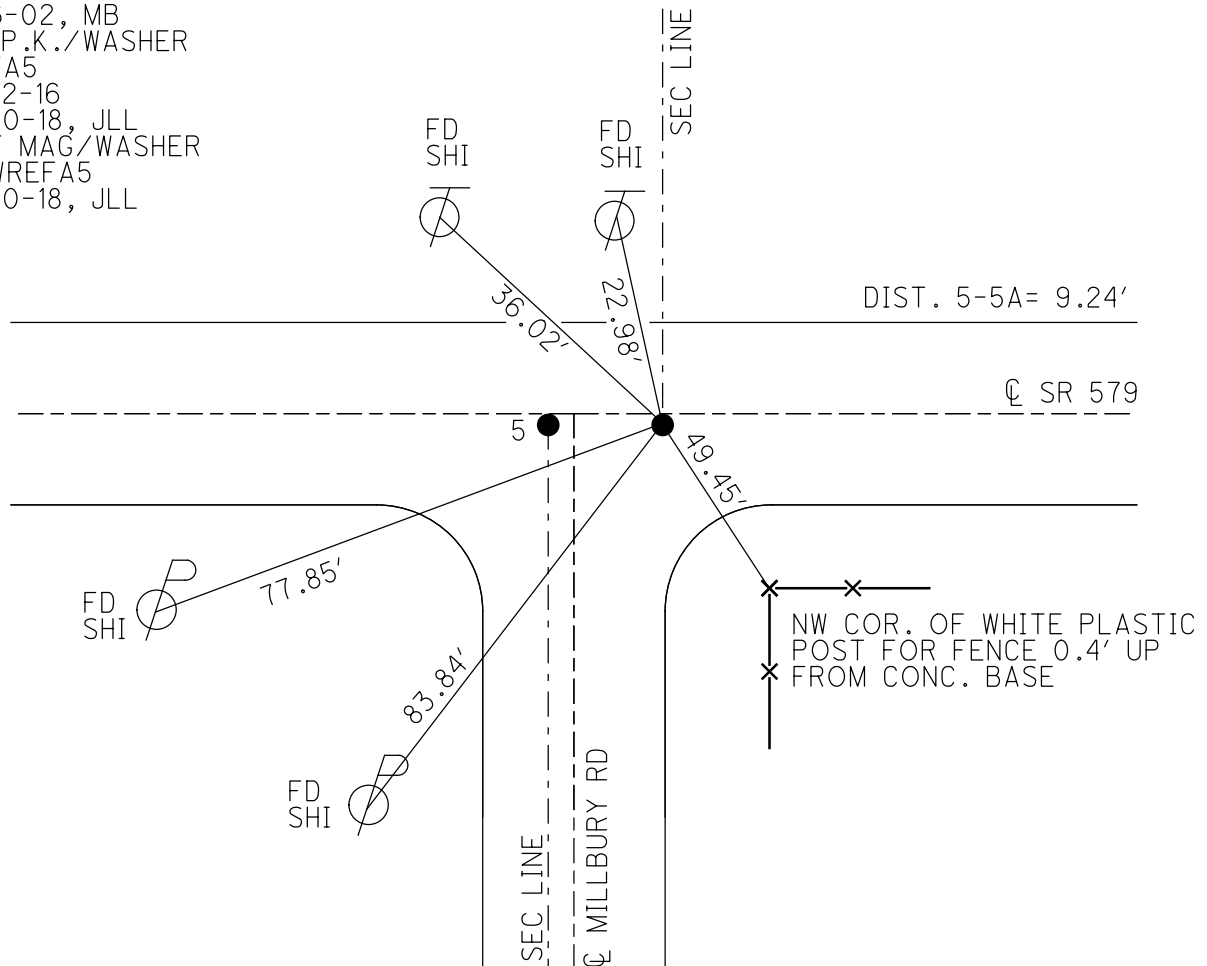
GEOID: GEOID12A

GRID: NORTHING: 706366.222

EASTING: 1715392.644



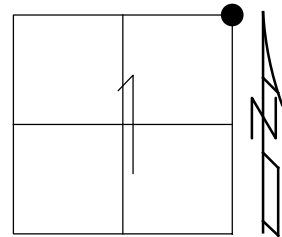
RECORD:
 FD P.K./WASHER
 8-30-02, MB
 SET P.K./WASHER
 11-6-02, MB
 FD P.K./WASHER
 REFA5
 8-22-16
 5-30-18, JLL
 SET MAG/WASHER
 NEWREFA5
 7-30-18, JLL



O.D.O.T. DISTRICT 2 SURVEY OFFICE (USE ONLY)

PERSONNEL _____ REFERENCE NO. 6 SHEET 16 OF 16
 NOTES HAGEMEYER DATE 5/30/18 ROUTE SR 579
 H.C. LUE WEATHER SUNNY COUNTY WOOD
 R.C. HAGEMEYER TEMP. 74° TOWNSHIP LAKE
 DWG BY MILLER PID 97012 SECTION 1
 T 7 N R 12 E

TYPE MONUMENT _____ MAG/WASHER
 ON SURFACE - ~~BELOW~~ _____ ON _____
 OFFSET \odot PAVEMENT 1.3' ~~ET~~ : RT
 _____ TO _____ EDGE PAVEMENT
 STATION: 127+53.04



HORZ.DATUM: NAD83(2011) GEOID: GEOID12A
 GRID: NORTHING: 706368.336 EASTING: 1718038.624

NOTE: REF A OTT 579

RECORD:
 FD R.R. SPIKE
 3" DOWN
 8-30-02, MB
 SET MAG/WASHER
 11-27-02, MB
 FD MAG/WASHER
 REF6
 8-22-16, JLL
 SET MAG/WASHER
 NEWREF6
 7-30-18, JLL

