

O.D.O.T. DISTRICT 2 SURVEY OFFICE (USE ONLY)

PERSONNEL

REFERENCE NO. 1

SHEET 4 OF 16

NOTES HAGEMEYER

DATE 5/29/18

ROUTE SR 579

H.C. LEU

WEATHER SUNNY

COUNTY WOOD

R.C. HAGEMEYER

TEMP. 73°

TOWNSHIP LAKE

DWG BY MILLER

PID 97012

SECTION 3

T 7 N R 12 E

TYPE MONUMENT MONBOX W/ 1" IPIN

ON SURFACE - ~~BELOW~~ ON

OFFSET ϕ PAVEMENT 0.9' ~~LT~~ : RT

30.1' TO RT EDGE PAVEMENT

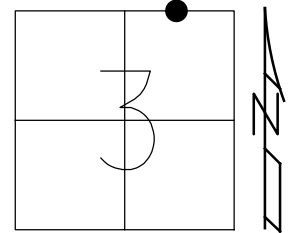
STATION: 9+30.58

HORZ. DATUM: NAD83(2011)

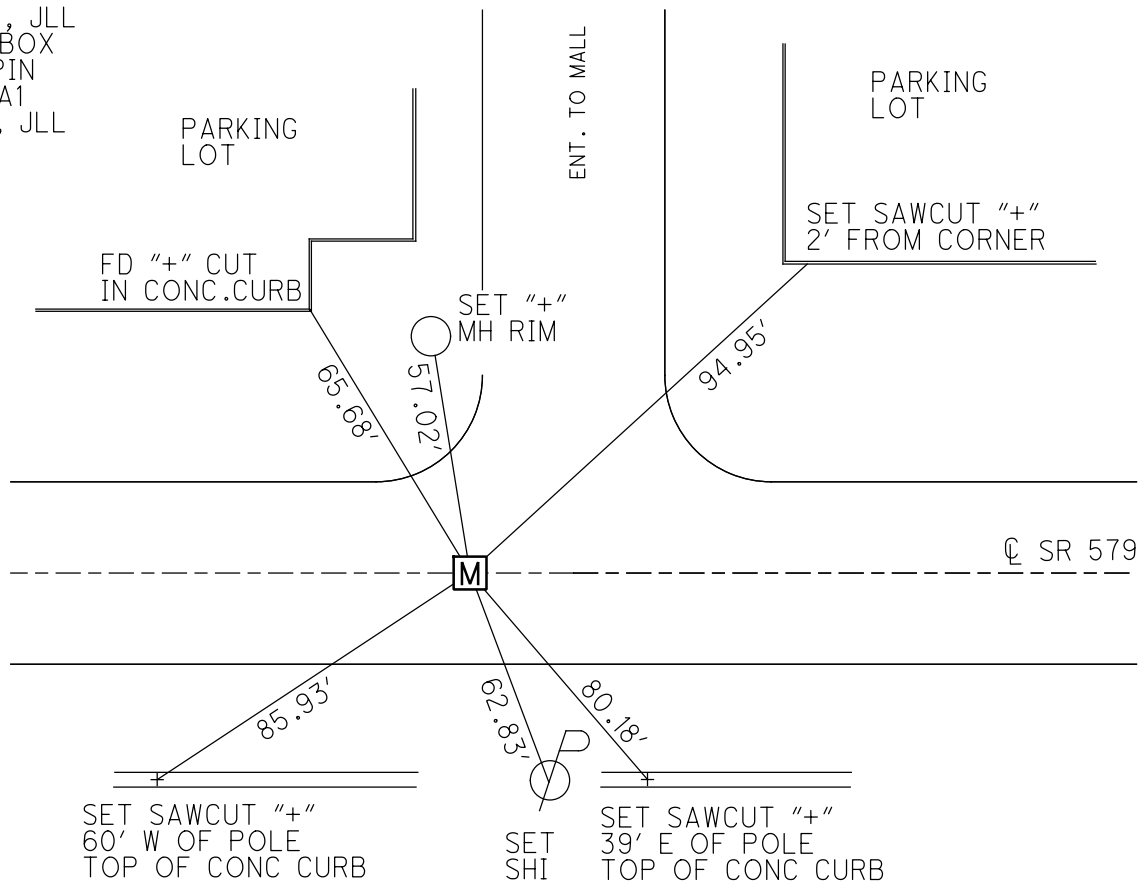
GEOID: GEOID12A

GRID: NORTHING: 706384.371

EASTING: 1706222.176



RECORD: P.T.
 STA. 9+30.83
 SURVEY CAPS SET
 18" DOWN
 1967
 FD MONBOX
 W/ 1" IPIN
 7-13-16
 7-30-18, JLL
 FD MONBOX
 W/ 1" IPIN
 NEWREFA1
 12-5-18, JLL



O.D.O.T. DISTRICT 2 SURVEY OFFICE (USE ONLY)

PERSONNEL _____ REFERENCE NO. 1 SHEET 4 OF 7

NOTES BARNHESEL DATE 9/18/02 ROUTE SR 579
 H.C. CANTERBURY WEATHER SUNNY COUNTY WOOD
 R.C. BARNHESEL TEMP. 70° TOWNSHIP LAKE
HUSS SECTION 3
 T 7 N R 12 E

TYPE MONUMENT MON.BOX

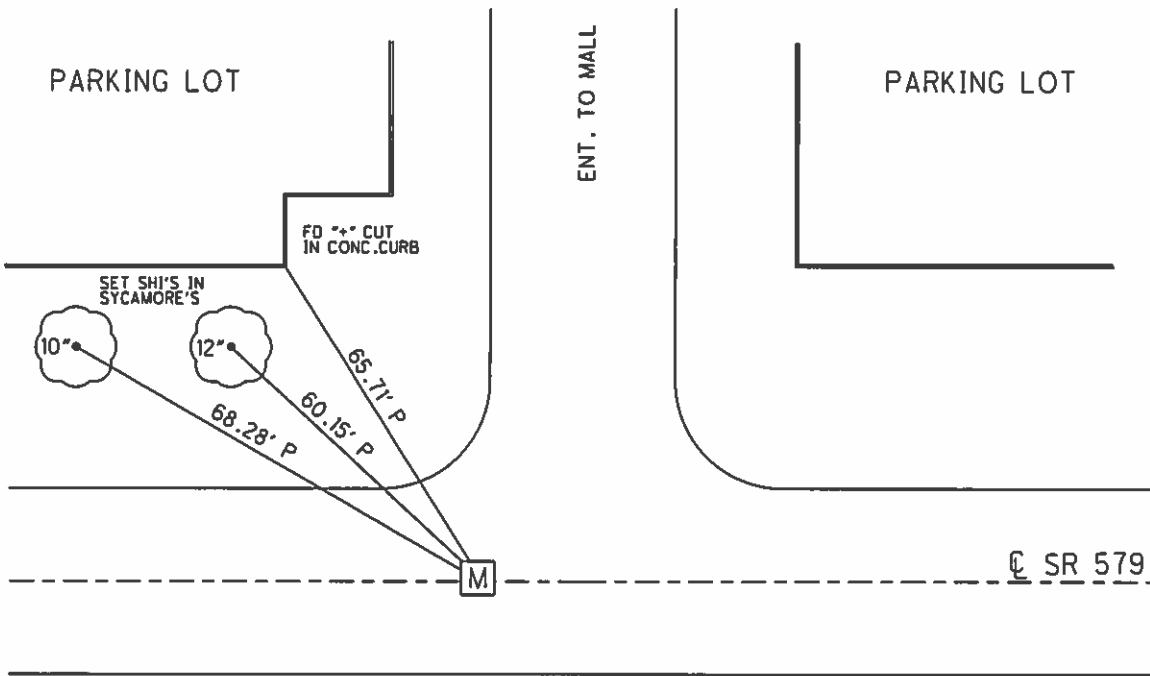
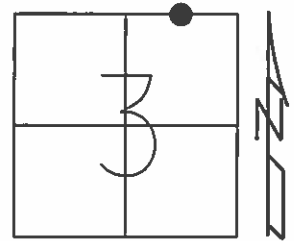
ON SURFACE - ~~BELOW~~ ON

~~LEFT~~ - CL PAV'T - RIGHT 0.9'

30.1' TO RT EDGE PAVEMENT

S.L.M. 9+34

Grid: Northing: - _____ Easting: - _____



O.D.O.T. DISTRICT 2 SURVEY OFFICE

PERSONNEL

REFERENCE NO. 1

SHEET 3 OF 12

NOTES A. Cheney

H.C. R. Barbour

R.C. J. Rippe

A. Geyman

DATE 11-13-91

WEATHER Cloudy

TEMP. 40°

ROUTE 579

COUNTY Wood

TOWNSHIP LAKE

SECTION 3

T. 2 N. R. 12 E.

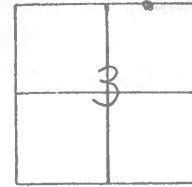
TYPE MONUMENT Mon. Bot

ON SURFACE - ~~BELOW~~

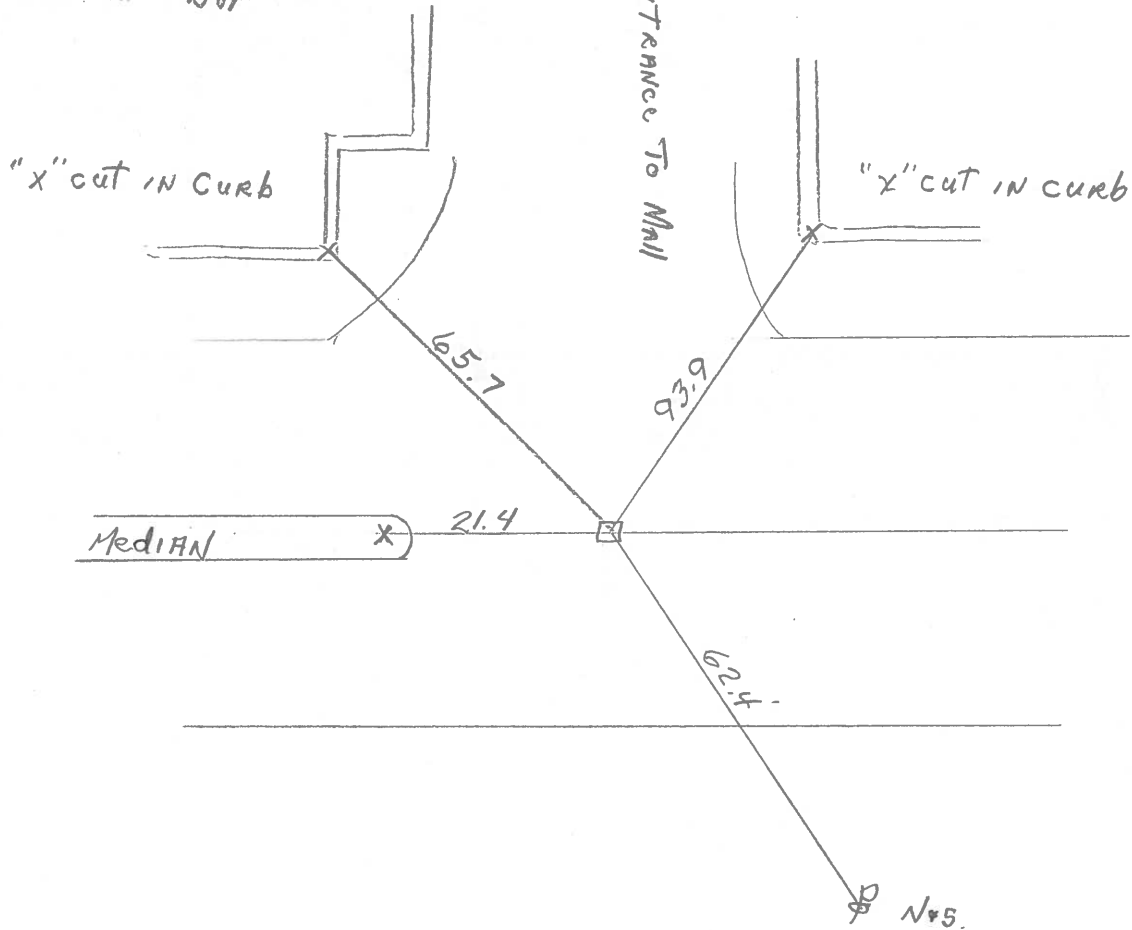
~~LEFT - & PAV'T. - RIGHT~~

TO EDGE PAVEMENT

S.L.M. 9+29



All measurements to tenths
Just to locate Bot



PERSONNEL	TITLE	PERSONNEL	TITLE	COUNTY	Wood	DATE	5-24-77
BURNSIDE				S. R.	579	WEATHER	Pt. Cloudy
SMITH				SEC.	WOODVILLE MALL	TEMP.	+90°
BOWERS							
MEAD							

DESCRIPTION REF. TIES TO & CONTROL POINT JOB NO. _____

