

O.D.O.T. DISTRICT 2 SURVEY OFFICE (USE ONLY)

PERSONNEL

REFERENCE NO. 1 A

SHEET 5 OF 16

NOTES HAGEMEYER

DATE 5/29/18

ROUTE SR 579

H.C. LEU

WEATHER SUNNY

COUNTY WOOD

R.C. HAGEMEYER

TEMP. 73°

TOWNSHIP LAKE

SECTION 3

DWG BY MILLER

PID 97012

T 7 N R 12 E

TYPE MONUMENT CMON W/ 1 1/2" I-BOLT

ON SURFACE - ~~BELOW~~ ON

OFFSET Q PAVEMENT 6.1' ~~LT~~ : RT

21.5' TO RT EDGE PAVEMENT

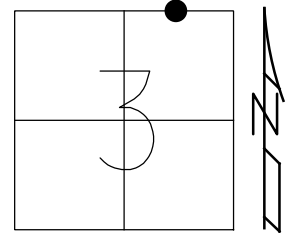
STATION: 14+86.6

HORIZ.DATUM: NAD83(2011)

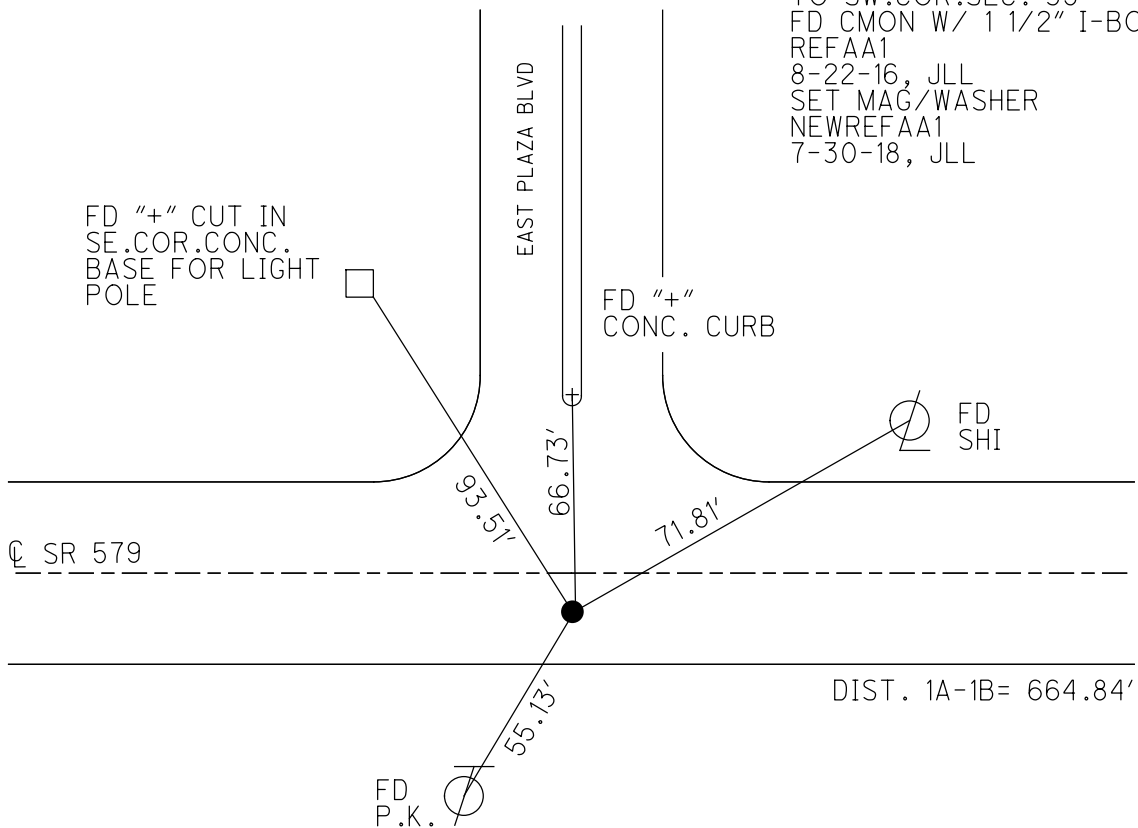
GEOID: GEOID12A

GRID: NORTHING: 706376.280

EASTING: 1706772.233



RECORD:
 SURVEYED BY J.C.ANDRUS
 1/9/67. 664.84' REC.DIST.
 TO SW.COR.SEC. 35
 FD CMON W/ 1 1/2" I-BOLT
 REFAA1
 8-22-16, JLL
 SET MAG/WASHER
 NEWREFAA1
 7-30-18, JLL



O.D.O.T. DISTRICT 2 SURVEY OFFICE (USE ONLY)

PERSONNEL _____ REFERENCE NO. 1 A SHEET 5 OF 7
 NOTES BARNHISEL DATE 9/18/02 ROUTE SR 579
 H.C. CANTERBURY WEATHER SUNNY COUNTY WOOD
 R.C. BARNHISEL TEMP. 70° TOWNSHIP LAKE
 _____ HUSS _____ SECTION 3
 _____ T 7 N R 12 E

TYPE MONUMENT 1/2" I.BOLT, IN CONC.

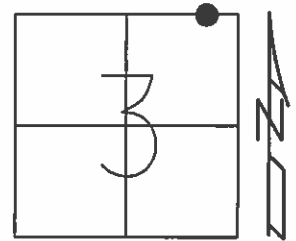
~~ON SURFACE~~ - BELOW 4"

~~LEFT~~ - ℄ PAV'T - RIGHT 6.1'

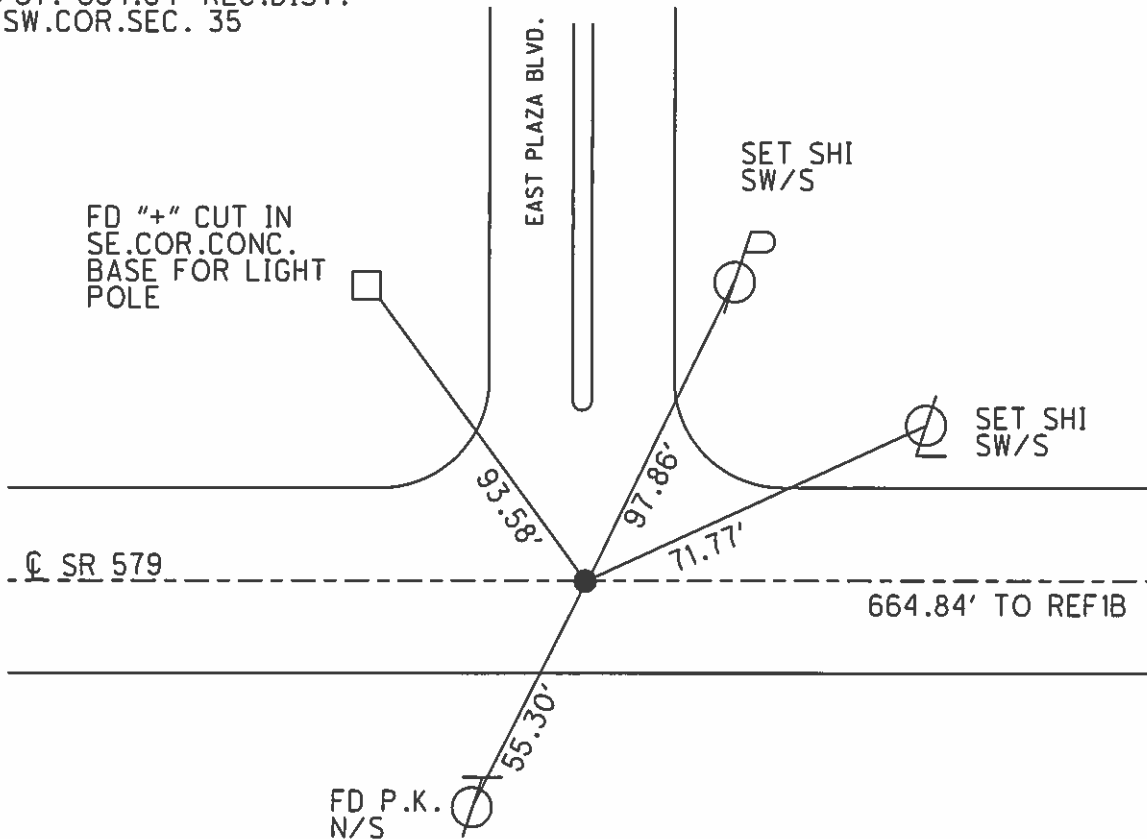
21.5' TO RT EDGE PAVEMENT

S.L.M. 14+83

Grid: Northing: - Easting: -



RECORD:
 SURVEYED BY J.C.ANDRUS
 1/9/67. 664.84' REC.DIST.
 TO SW.COR.SEC. 35



O.D.O.T. DISTRICT 2 SURVEY OFFICE

PERSONNEL

REFERENCE NO. 1A

SHEET 4 OF 12

NOTES R. Cheney

H.C. R. Barbour

R.C. J. Rippe

R. Geyman

DATE 11-13-91

WEATHER Cloudy

TEMP. 40°

ROUTE 579

COUNTY Wood

TOWNSHIP 27N

SECTION 3

T 27 N R 12 E

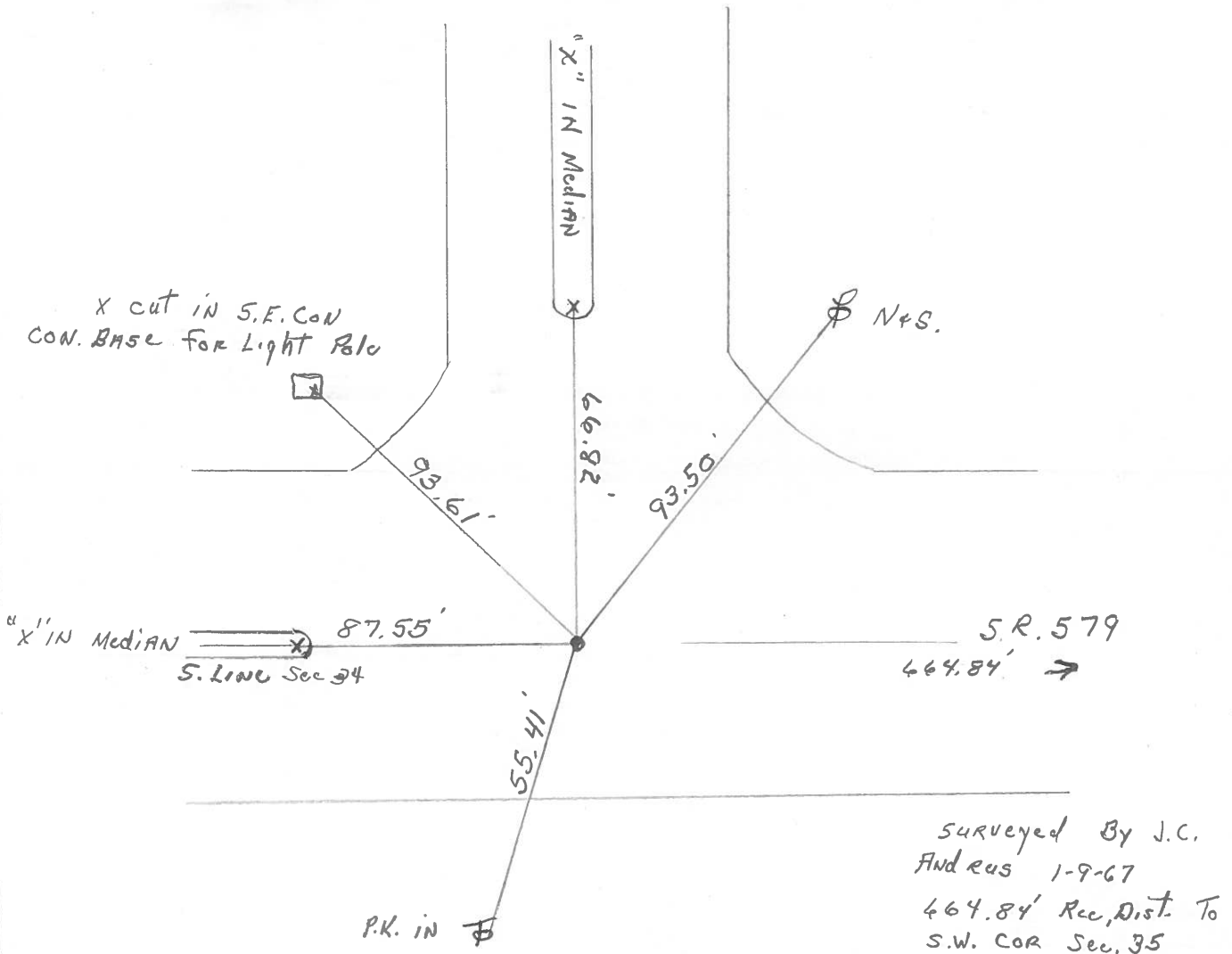
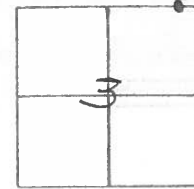
TYPE MONUMENT P.K. & Washer

~~ON SURFACE~~ - BELOW 1 1/2" I Bolt in Con.

~~LEFT - & PAV'T.~~ - RIGHT 6'

21.5 TO S. EDGE PAVEMENT

S.L.M. 14+83



PERSONNEL	TITLE	PERSONNEL	TITLE
BURNSIDE			
SMITH			
BOWERS			
MEAD			

COUNTY Wood DATE 2-15-77

S.R. 579 WEATHER Cloudy

SEC. _____ TEMP. +20°

DESCRIPTION CONTROL TIES (WOODVILLE MAIL TO WOOD-OTT. CO. LINE) JOB NO. _____

