

O.D.O.T. DISTRICT 2 SURVEY OFFICE (USE ONLY)

PERSONNEL

REFERENCE NO. 1 B

SHEET 6 OF 16

NOTES HAGEMEYER

DATE 5/30/18

ROUTE SR 579

H.C. LEU

WEATHER CLOUDY

COUNTY WOOD

R.C. HAGEMEYER

TEMP. 84°

TOWNSHIP LAKE

SECTION 3

DWG BY MILLER

PID 97012

T 7 N R 12 E

TYPE MONUMENT 1" ID. IPIPE W/CTR NAIL

~~ON SURFACE~~ - BELOW 13 1/2"

OFFSET 6.7' CL PAVEMENT 5.7' ~~LT~~ : RT

6.7' TO RT EDGE PAVEMENT

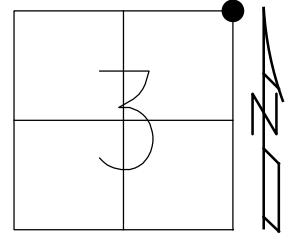
STATION: 21+04.42

HORZ. DATUM: NAD83(2011)

GEOID: GEOID12A

GRID: NORTHING: 706374.452

EASTING: 1707390.043



RECORD:
 SET MAG/WASHER
 3-29-04, MB
 HELD 2 REF TIES
 METAL CLOSE DO
 NOT KNOW WHAT
 REFB1
 8-22-16, JLL
 SET MAG/WASHER
 NEWREFB1
 7-30-18, JLL

DIST. 1A-1B= 664.84'

