

O.D.O.T. DISTRICT 2 SURVEY OFFICE (USE ONLY)

PERSONNEL

REFERENCE NO. 2 A

SHEET 8 OF 16

NOTES HAGEMEYER

DATE 5/29/18

ROUTE SR 579

H.C. LEU

WEATHER SUNNY

COUNTY WOOD

R.C. HAGEMEYER

TEMP. 84°

TOWNSHIP LAKE

SECTION 35

DWG BY MILLER PID 97012

T 7 N R 12 E

TYPE MONUMENT MAG/WASHER

ON SURFACE - ~~BELOW~~ ON

OFFSET 6.3' RT : RT

4.8' TO RT EDGE PAVEMENT

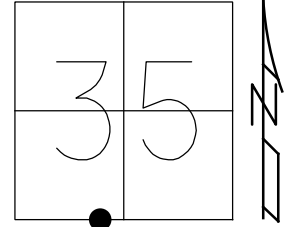
STATION: 41+39.94

HORIZ.DATUM: NAD83(2011)

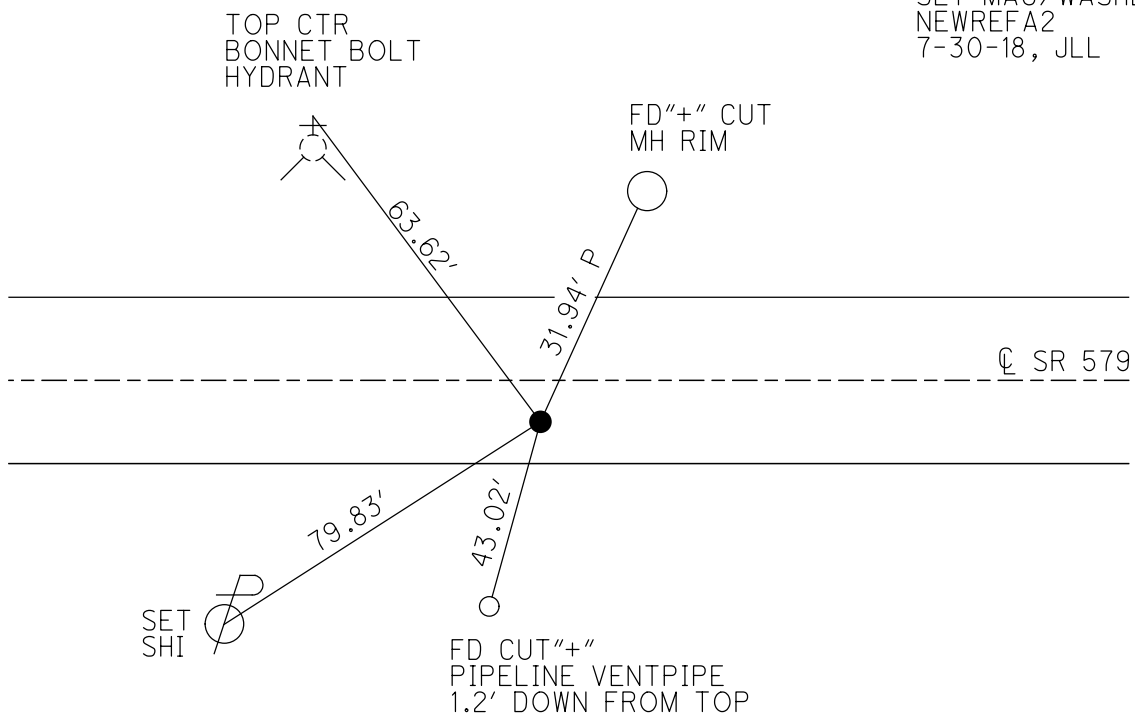
GEOID: GEOID12A

GRID: NORTHING: 706371.702

EASTING: 1709425.501



RECORD:
 P.K./WASHER
 9-18-02, MB
 SET MAG/WASHER
 11-27-02, MB
 FD MAG/WASHER
 REFA2
 8-22-16, JLL
 SET MAG/WASHER
 NEWREFA2
 7-30-18, JLL



O.D.O.T. DISTRICT 2 SURVEY OFFICE

PERSONNEL

REFERENCE NO. 2A

SHEET 1 OF 6

NOTES BARNHISEL

H.C. CANTERBURY

R.C. BARNHISEL

DATE 9-18-02

WEATHER CLOUDY

TEMP. +70°

ROUTE S.R. # 579

COUNTY Wood

TOWNSHIP LAKE

SECTION 35

T 7 N R 12 E

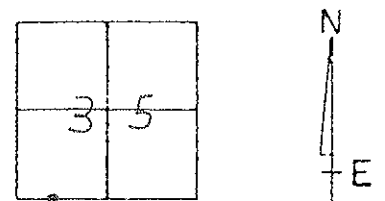
TYPE MONUMENT P.K. + WASHER

ON SURFACE - ~~BELOW~~ SURFACE

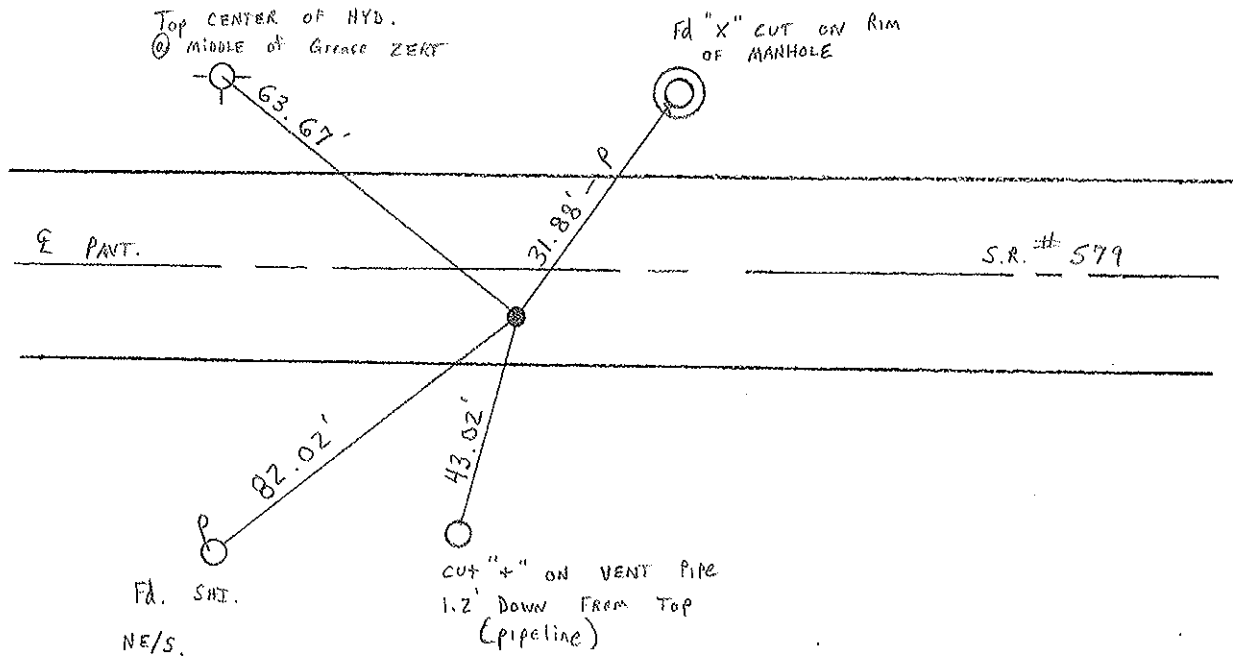
~~LEFT- & PAV'T. - RIGHT~~ 5.8' RT &

4.8' TO RT. EDGE PAVEMENT

S.L.M. 41 + 43



RESET MAG NAIL / WASHER
 11-27-02
 M.B.



Resurveyed 2002

O.D.O.T. DISTRICT 2 SURVEY OFFICE

PERSONNEL

REFERENCE NO. 2A

SHEET 6 OF 12

NOTES R. Cheney

H.C. R. BARBOUR

R.C. J. Ripple

A. Geyman

DATE 11-13-91

WEATHER Cloudy

TEMP. 40°

ROUTE 579

COUNTY Wood

TOWNSHIP LAKE

SECTION 35

T7 N R12 E

TYPE MONUMENT P.K. Washer

~~ON SURFACE~~ - BELOW P.K.

~~LEFT~~ - ~~PAV'T.~~ - RIGHT 5.5

5' TO S. EDGE PAVEMENT

S.L.M. 41+39

