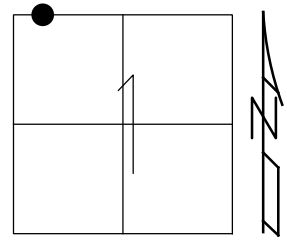


O.D.O.T. DISTRICT 2 SURVEY OFFICE (USE ONLY)

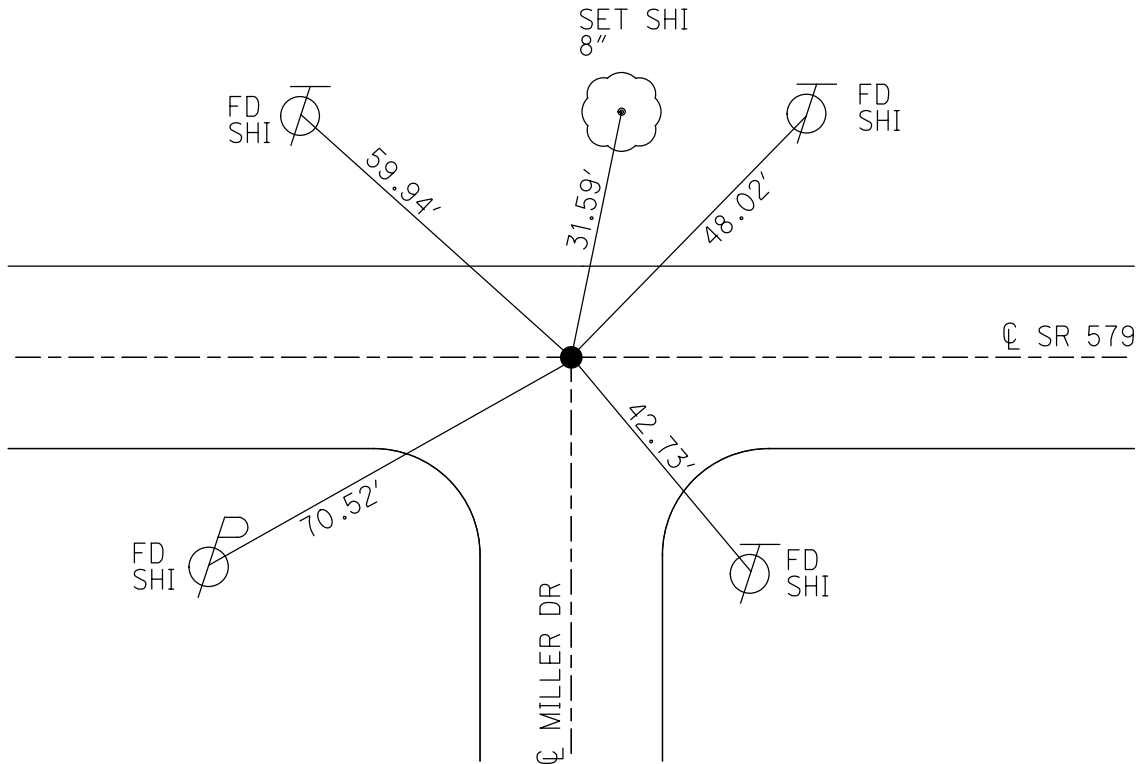
PERSONNEL	REFERENCE NO. <u>4 A</u>	SHEET <u>12</u> OF <u>16</u>
NOTES <u>HAGEMeyer</u>	DATE <u>5/29/18</u>	ROUTE <u>SR 579</u>
H.C. <u>LUE</u>	WEATHER <u>SUNNY</u>	COUNTY <u>WOOD</u>
R.C. <u>HAGEMeyer</u>	TEMP. <u>88°</u>	TOWNSHIP <u>LAKE</u>
		SECTION <u>1</u>
DWG BY <u>MILLER</u>	PID <u>97012</u>	T <u>7</u> N R <u>12</u> E

TYPE MONUMENT MAG/WASHER
 ON SURFACE - ~~BELOW~~ ON
 OFFSET CL PAVEMENT ON ~~LT:RT~~
10.5' TO LT EDGE PAVEMENT
 STATION: 80+80.78



HORZ. DATUM: NAD83(2011) GEOID: GEOID12A
 GRID: NORTHING: 706371.747 EASTING: 1713366.327

RECORD:
 FD P.K./WASHER
 9-18-02, MB
 SET PK/WASHER
 11-6-01, MB
 FD MAG/WASHER
 REFAA4
 8-22-16, JLL
 SET MAG/WASHER
 7-30-18, JLL



O.D.O.T. DISTRICT 2 SURVEY OFFICE

PERSONNEL _____

REFERENCE NO. 4 A

SHEET 4 OF 6

NOTES BARNHISEL

H.C. CANTERBURY

R.C. BARNHISEL

DATE 9-18-02

WEATHER CLOUDY

TEMP. +70°

ROUTE S.R. # 579

COUNTY Wood

TOWNSHIP LAKE

SECTION 1

T 7 N R 12 E

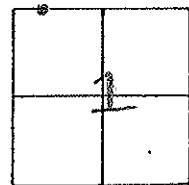
TYPE MONUMENT P.K. / WASHER

ON SURFACE - BELOW SURFACE

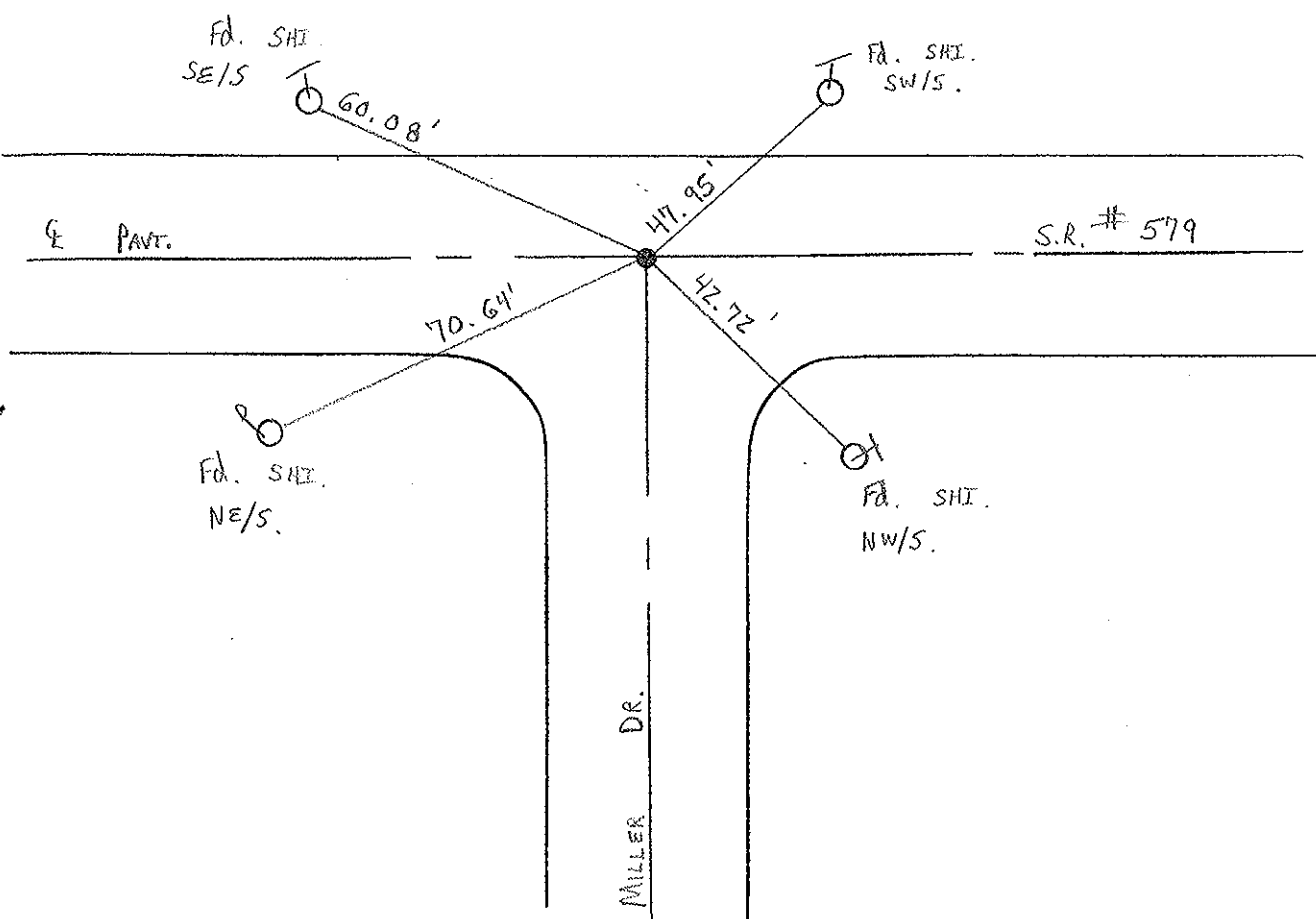
LEFT - Q PAV'T. - RIGHT ON Q

10.5' TO LT. EDGE PAVEMENT ON Q SOUTH

S.L.M. 80 + 84



RESET P.K. + WASHER
 11-06-02
 M.B.



O.D.O.T. DISTRICT 2 SURVEY OFFICE

PERSONNEL

REFERENCE NO. 4A

SHEET 9 OF 12

NOTES R. Cheney

H.C. R. Barbour

R.C. J. Ripple

R. Geyman

DATE 11-13-91

WEATHER Cloudy

TEMP. 40

ROUTE 579

COUNTY Wood

TOWNSHIP Lake

SECTION 1

T. 7 N R. 12 E

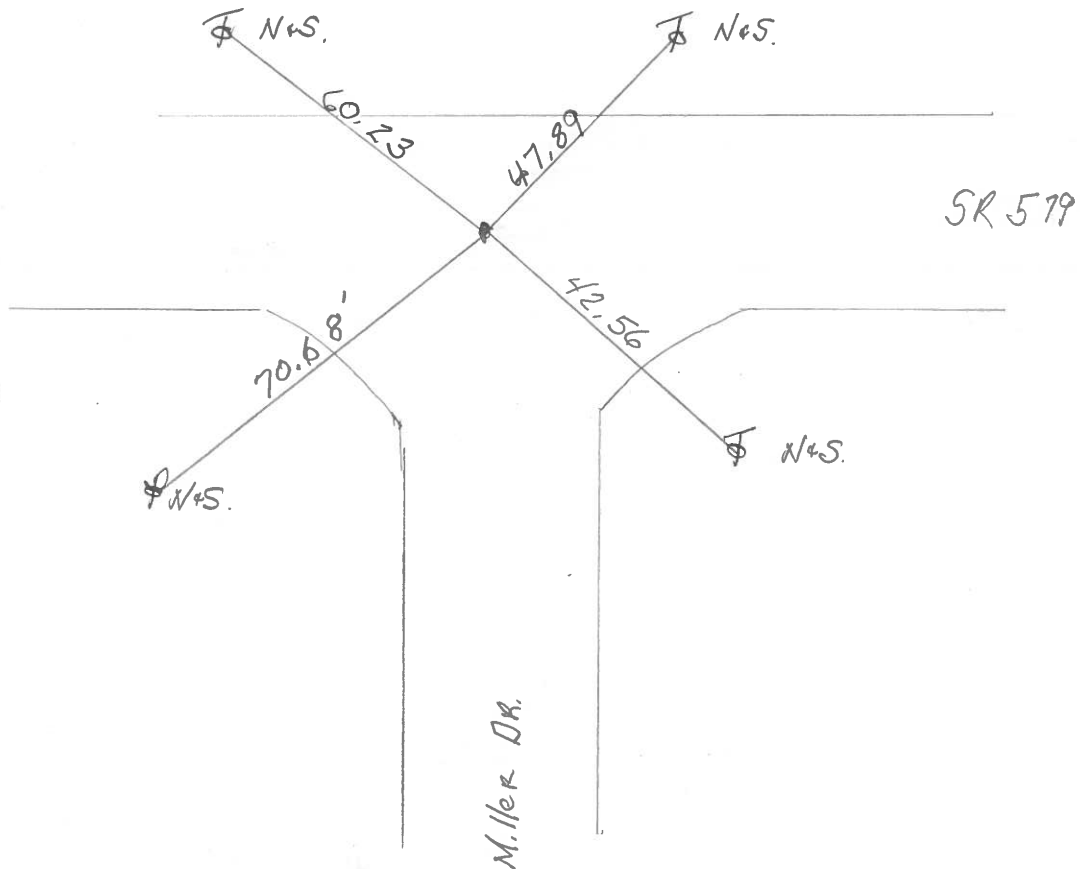
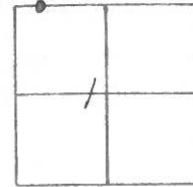
TYPE MONUMENT P.K. + Washer

~~ON SURFACE~~ - BELOW P.K.

~~LEFT - C. PAV'T. - RIGHT~~

10 TO N. EDGE PAVEMENT

S.L.M. 80 + 84



County Wood S.R. 579

Township Lake

Section 1

T_N, R_E

Personnel J. Stone

P. Masco

R. Michalek

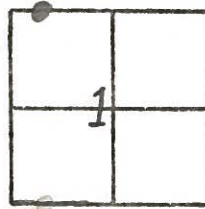
D. Curtis

#4-A

Date 20 May 82

Weather Warm

Temp. 70°



REF. NO. 4A

