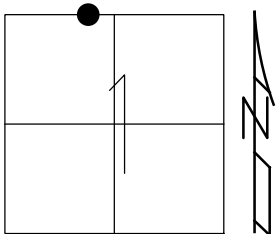


O.D.O.T. DISTRICT 2 SURVEY OFFICE (USE ONLY)

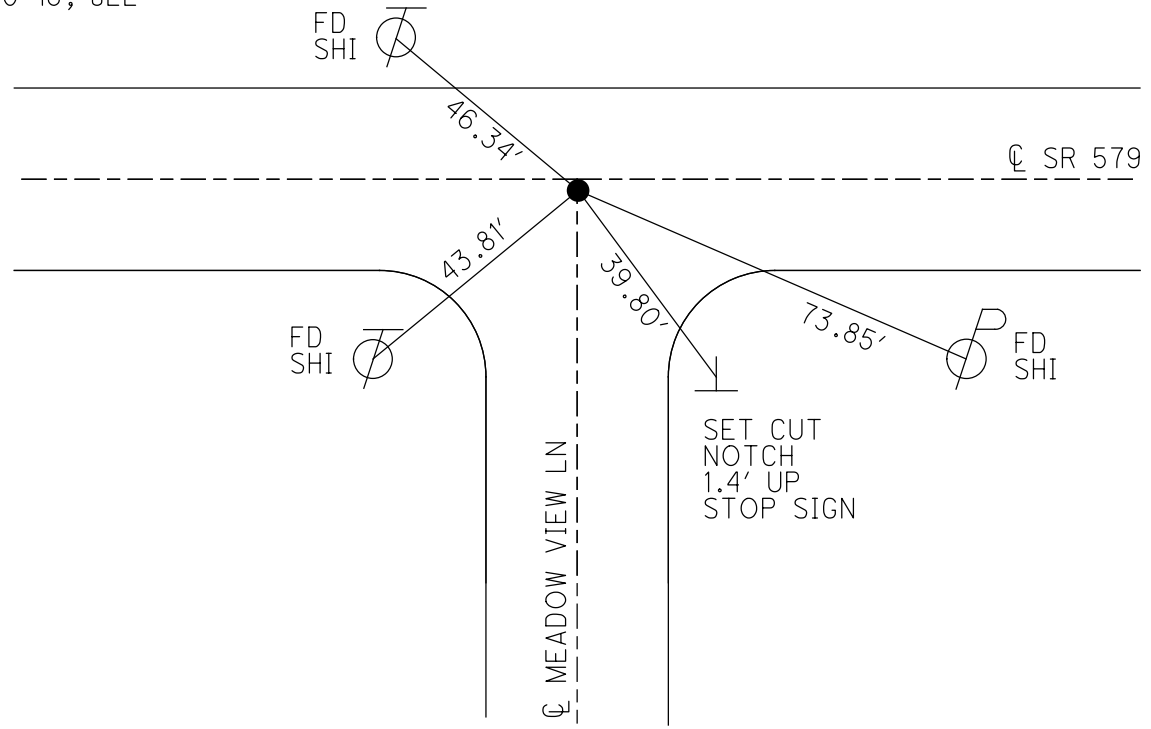
PERSONNEL \_\_\_\_\_ REFERENCE NO. 4 B SHEET 13 OF 16  
 NOTES HAGEMEYER DATE 5/29/18 ROUTE SR 579  
 H.C. LUE WEATHER SUNNY COUNTY WOOD  
 R.C. HAGEMEYER TEMP. 88° TOWNSHIP LAKE  
 DWG BY MILLER PID 97012 SECTION 1  
 T 7 N R 12 E

TYPE MONUMENT P.K.NAIL  
 ON SURFACE - ~~BELOW~~ ON  
 OFFSET ☉ PAVEMENT 0.7' ~~LT~~ : RT  
11.1' TO LT EDGE PAVEMENT  
 STATION: 86+88.71



HORZ.DATUM: NAD83(2011) GEOID: GEOID12A  
 GRID: NORTHING: 706369.459 EASTING: 1713974.289

RECORD:  
 FD P.K./WASHER  
 2" DOWN  
 8-30-02, MB  
 SET P.K./WASHER  
 11-6-01, MB  
 FD P.K.NAIL  
 REFB4  
 8-22-16, JLL  
 SET MAG/WASHER  
 NEWREFB4  
 7-30-18, JLL



# O.D.O.T. DISTRICT 2 SURVEY OFFICE

PERSONNEL \_\_\_\_\_

REFERENCE NO. 48

SHEET 5 OF 6

NOTES BARNHISEL

H.C. CANTERBURY

R.C. BARNHISEL

DATE 8-30-02

WEATHER SUN

TEMP. +75°

ROUTE S.R. # 579

COUNTY Wood

TOWNSHIP LAKE

SECTION 1

T 7 N R 12 E

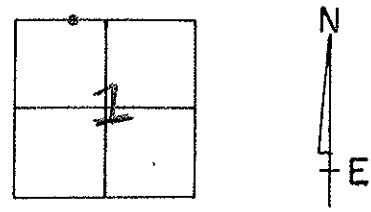
TYPE MONUMENT P.K. / WASHER

ON SURFACE - BELOW 2" DOWN

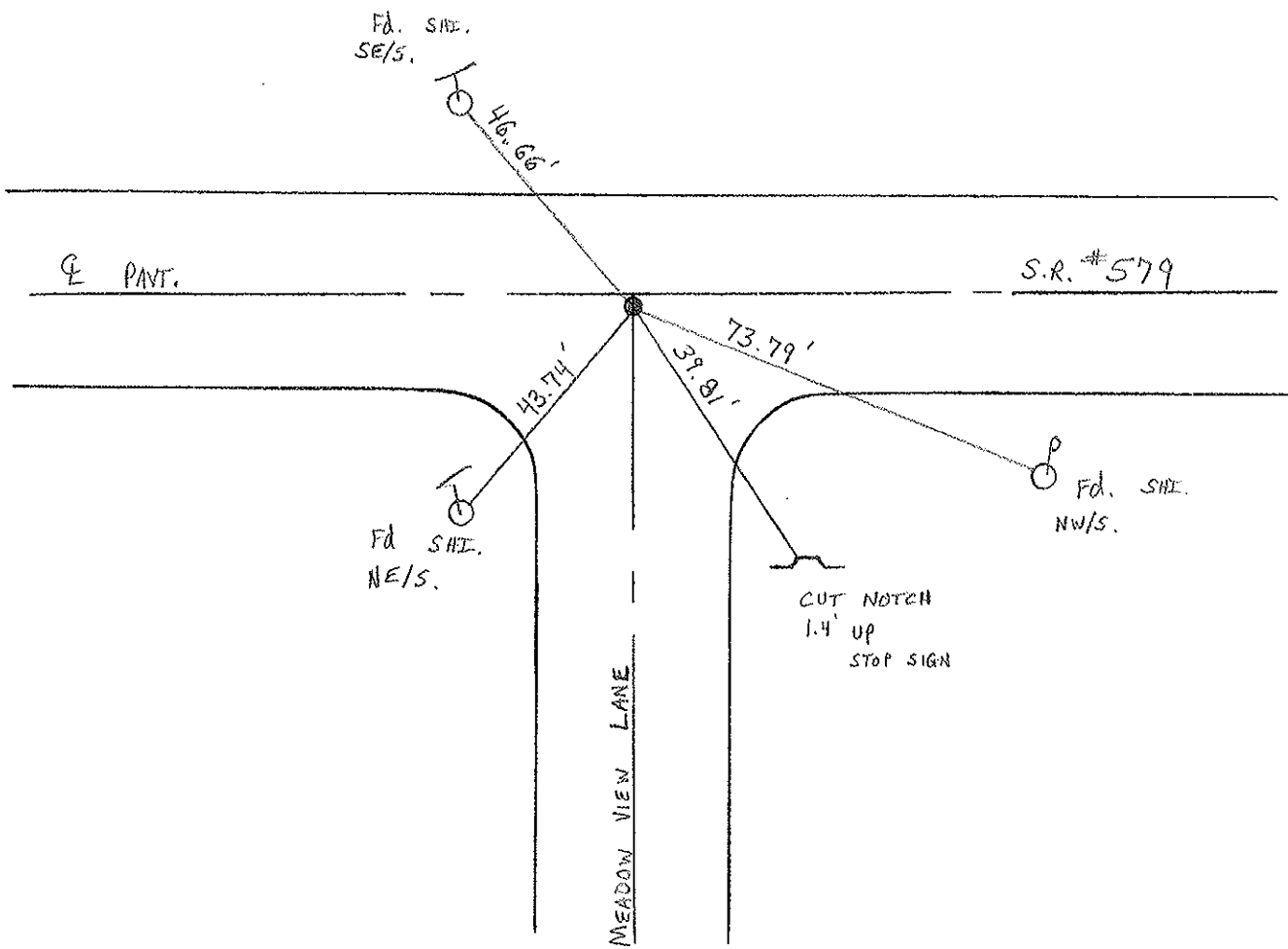
LEFT - & PART. - RIGHT 0.7' RT

11.1' TO N. EDGE PAVEMENT / ON & SOUTH

S.L.M. 87+01



RESET P.K./WASHER  
11-06-02  
M.B.



O.D.O.T. DISTRICT 2 SURVEY OFFICE

PERSONNEL

REFERENCE NO. 4B

SHEET 10 OF 12

NOTES R. Cheney

H.C. R. Barbour

R.C. J. Ripple

R. Geyman

DATE 11-13-91

WEATHER Cloudy

TEMP. 40°

ROUTE 579

COUNTY Wood

TOWNSHIP LAKE

SECTION 1

T 7 N R 12 E

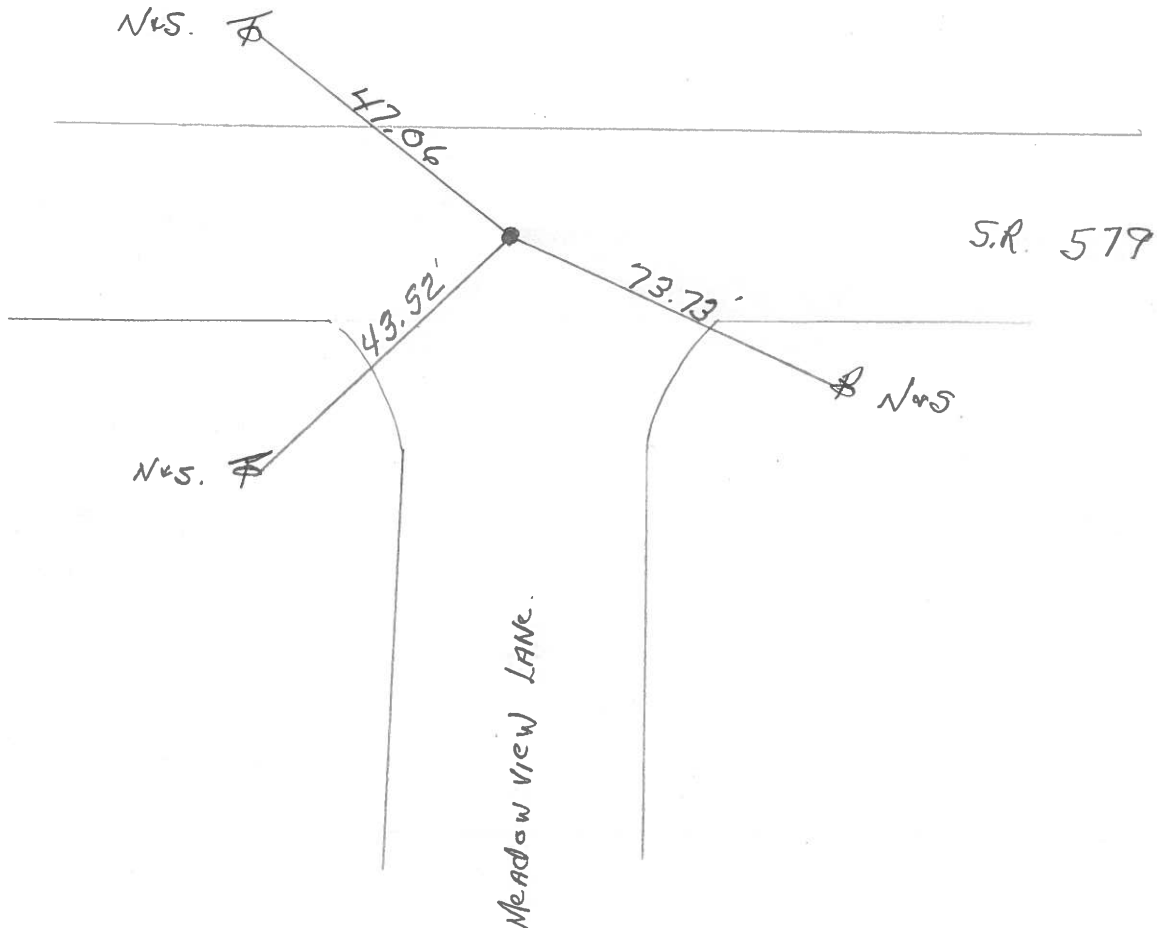
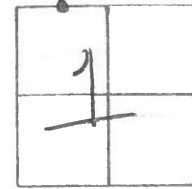
TYPE MONUMENT P.K. + Washer

ON SURFACE - BELOW Small Spike

~~LEFT -~~ PAV'T. - RIGHT 1

11 TO N. EDGE PAVEMENT

S.L.M. 86 + 92



County Wood S.R. 579

Township Lake

Section 1

T    N, R    E

Personnel I. Stone

P. Neuser

R. Michalak

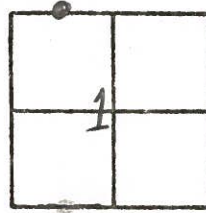
D. Curtis

#4-B

Date 20 May 82

Weather Warm

Temp. 70°



REF. NO. 4B

