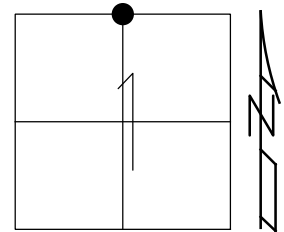


O.D.O.T. DISTRICT 2 SURVEY OFFICE (USE ONLY)

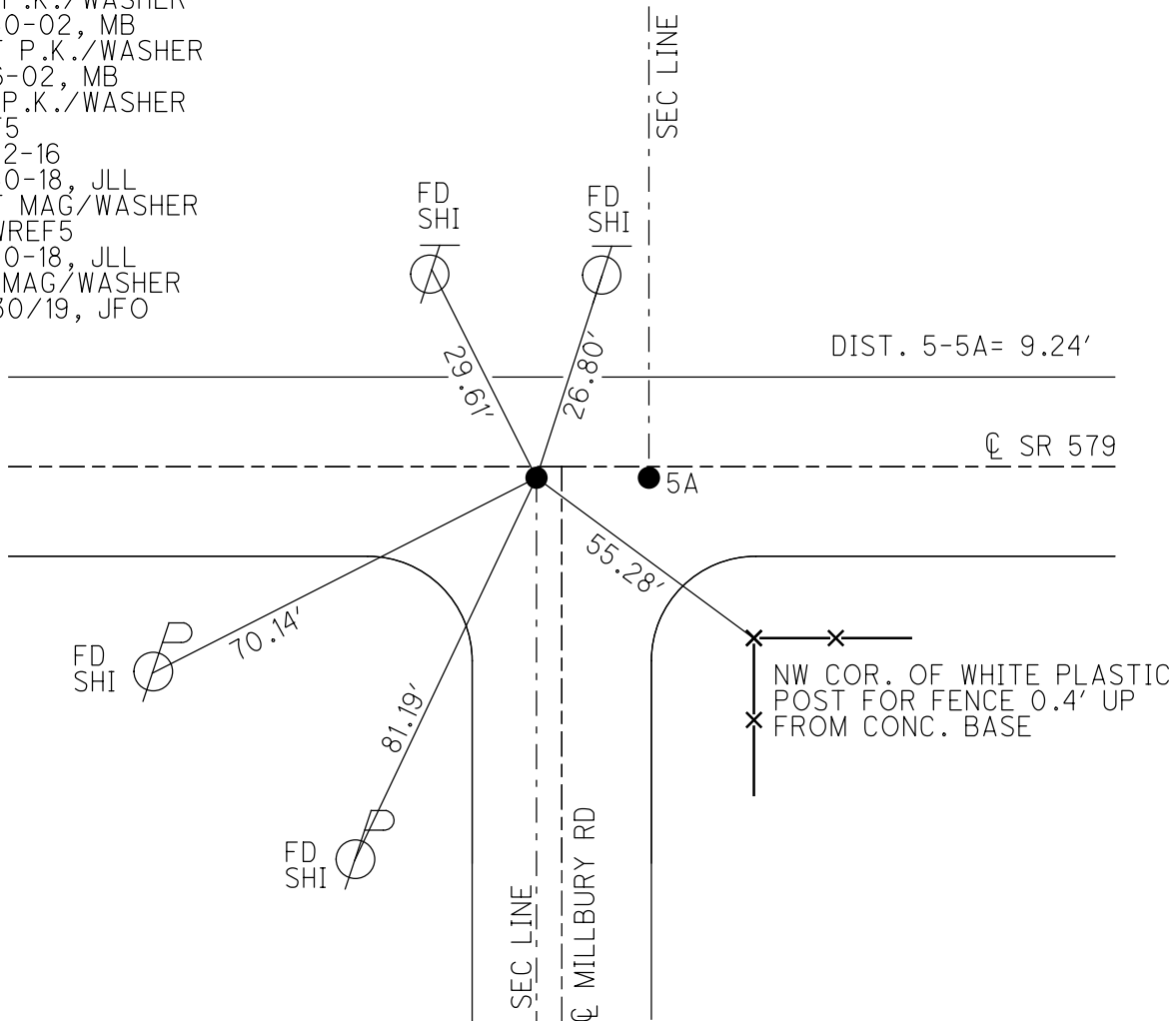
PERSONNEL _____ REFERENCE NO. 5 SHEET 14 OF 16
 NOTES HAGEMeyer DATE 5/30/18 ROUTE SR 579
 H.C. LUE WEATHER SUNNY COUNTY WOOD
 R.C. HAGEMeyer TEMP. 74° TOWNSHIP LAKE
 SECTION 1
 DWG BY NIESE PID NO PID T 7 N R 12 E

TYPE MONUMENT _____ P.K./WASHER _____
 ON SURFACE - ~~BELOW~~ ON _____
 OFFSET \odot PAVEMENT 1.6' RT : RT
12.5' TO LT EDGE PAVEMENT
 STATION: 100+97.88



HORIZ.DATUM: NAD83(2011) GEOID: GEOID12A
 GRID: NORTHING: 706366.233 EASTING: 1715383.412

RECORD: P.I.
 FD P.K./WASHER
 8-30-02, MB
 SET P.K./WASHER
 11-6-02, MB
 FD P.K./WASHER
 REF5
 8-22-16
 5-30-18, JLL
 SET MAG/WASHER
 NEWREF5
 7-30-18, JLL
 FD MAG/WASHER
 9/30/19, JFO



O.D.O.T. DISTRICT 2 SURVEY OFFICE (USE ONLY)

PERSONNEL

REFERENCE NO. 5

SHEET 14 OF 16

NOTES HAGEMEYER

DATE 5/30/18

ROUTE SR 579

H.C. LUE

WEATHER SUNNY

COUNTY WOOD

R.C. HAGEMEYER

TEMP. 74°

TOWNSHIP LAKE

SECTION 1

DWG BY MILLER

PID 97012

T 7 N R 12 E

TYPE MONUMENT P.K./WASHER

ON SURFACE - ~~BELOW~~ ON

OFFSET Q PAVEMENT 1.6' ~~LT~~ : RT

12.5' TO LT EDGE PAVEMENT

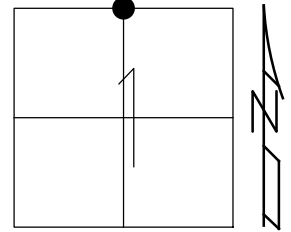
STATION: 100+97.88

HORZ. DATUM: NAD83(2011)

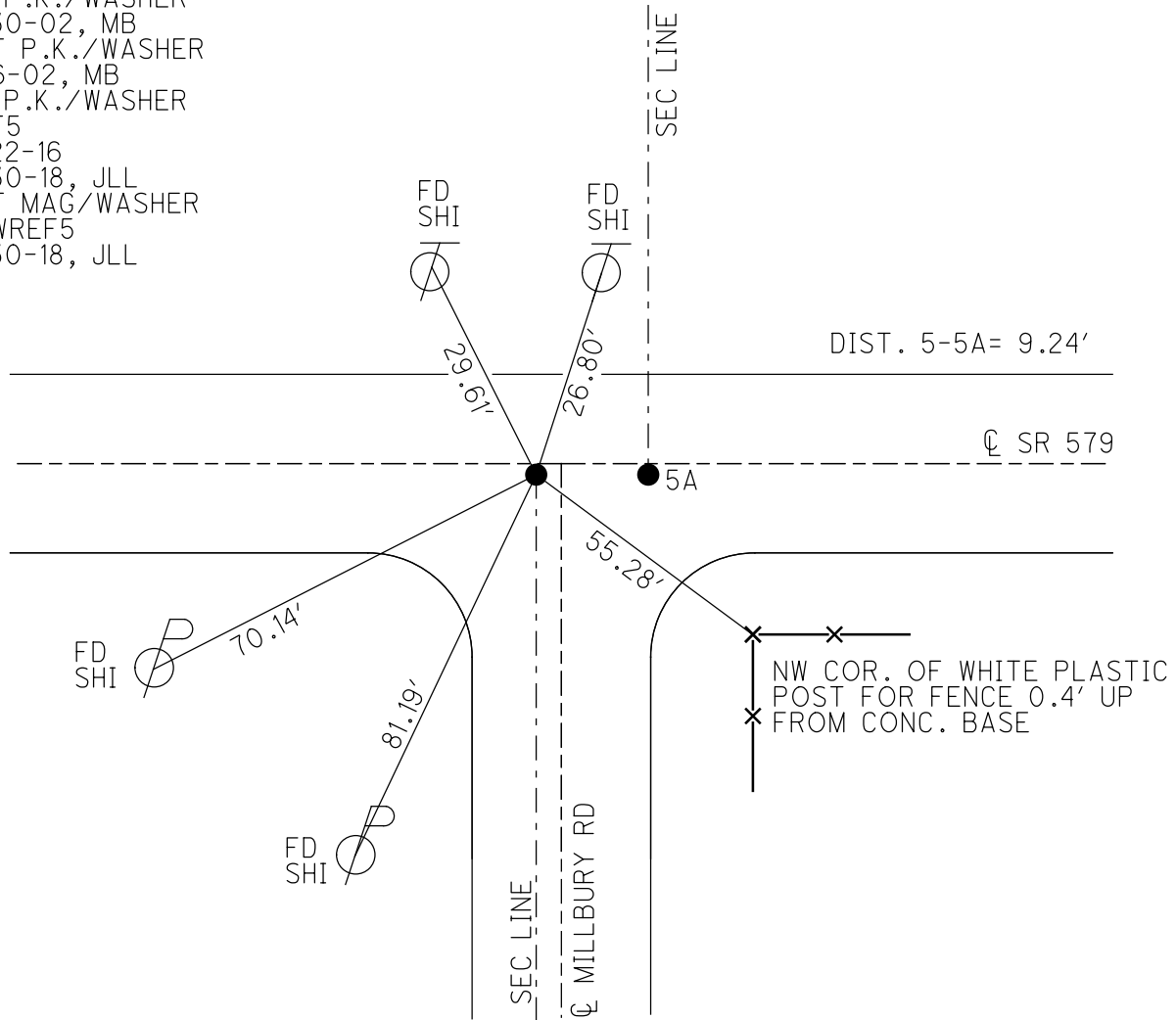
GEOID: GEOID12A

GRID: NORTHING: 706366.233

EASTING: 1715383.412



RECORD: P.I.
 FD P.K./WASHER
 8-30-02, MB
 SET P.K./WASHER
 11-6-02, MB
 FD P.K./WASHER
 REF5
 8-22-16
 5-30-18, JLL
 SET MAG/WASHER
 NEWREF5
 7-30-18, JLL



O.D.O.T. DISTRICT 2 SURVEY OFFICE

PERSONNEL _____

REFERENCE NO. 5

SHEET 6 OF 6

NOTES BARNHISEL

H.C. CANTERBURY

R.C. BARNHISEL

DATE 8-30-02

WEATHER SUN

TEMP. +75°

ROUTE S.R. # 579

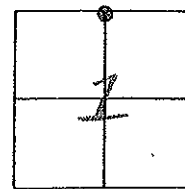
COUNTY Wood

TOWNSHIP LAKE

SECTION 1

T 7 N R 12 E

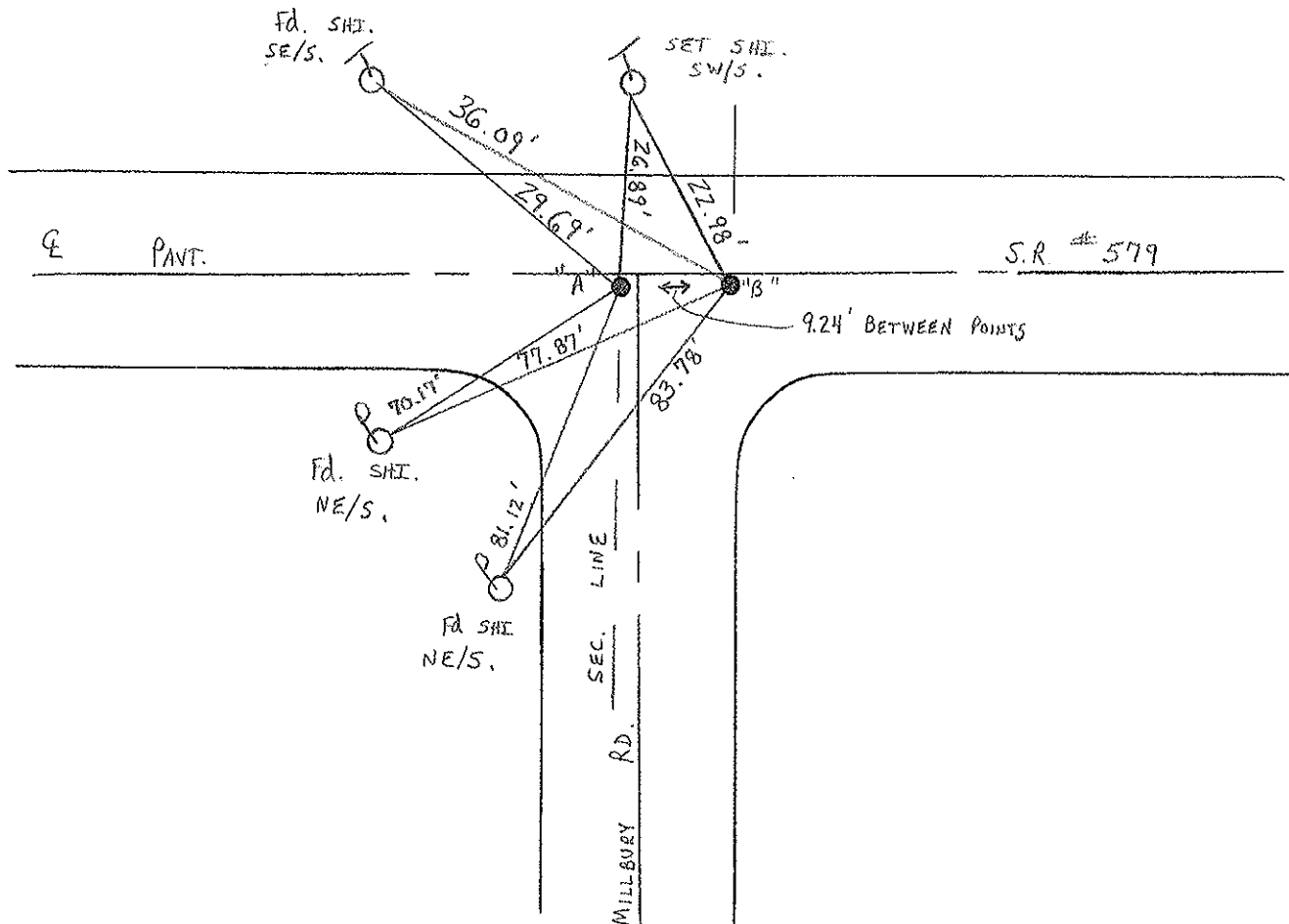
	PT A	PT B
TYPE MONUMENT	P.K. / WASHER	P.K. SHANK
ON SURFACE - BELOW	SURFACE	1" BELOW
LEFT- & PAV'T. - RIGHT	0.2 RT.	0.2 RT.
12.5' TO N EDGE PAVEMENT	1.5' W. OF & South	7.7' EAST of & South
S.L.M.	101+09	101+18



NOTE: PT "A" PAINTED W/ AERIAL TARGET
ASSUMED TO BE 1/4 SEC. PT.

RESET P.K'S/WASHER'S
11-06-02
M.B.

SEC. LINE



O.D.O.T. DISTRICT 2 SURVEY OFFICE

PERSONNEL

REFERENCE NO. 5

SHEET 11 OF 12

NOTES P. Cheney

H.C. R. BARBOUR

R.C. J. Ripple

R. Geyman

DATE 11-13-91

WEATHER Cloudy

TEMP. 40°

ROUTE 579

COUNTY Wood

TOWNSHIP LAKE

SECTION 1

T 7 N R 12 E

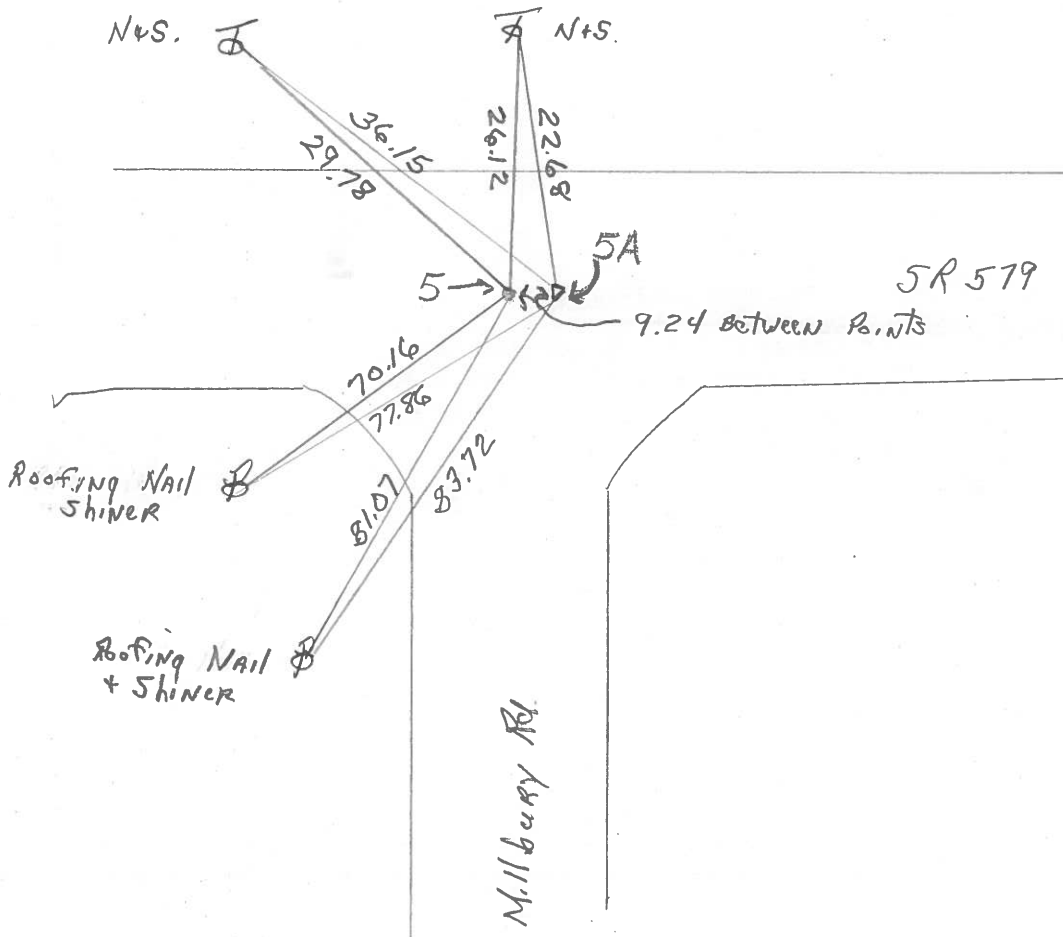
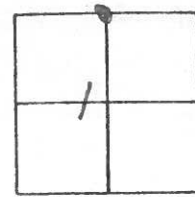
TYPE MONUMENT P.K. Washer

~~ON SURFACE~~ - BELOW P.K.

~~LEFT & PAV'T.~~ - RIGHT 2'

12.5' TO N. EDGE PAVEMENT

S.L.M. 101+11



PERSONNEL TITLE PERSONNEL TITLE

COUNTY Wood

DATE OK 1957

S. R. #579

WEATHER

SEC. B_r #

TEMP.

DESCRIPTION

LEFT

CENTER LINE

RIGHT

JOB NO.

