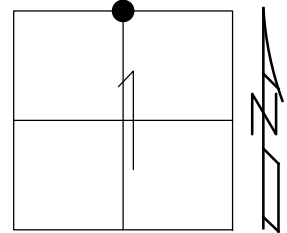


O.D.O.T. DISTRICT 2 SURVEY OFFICE (USE ONLY)

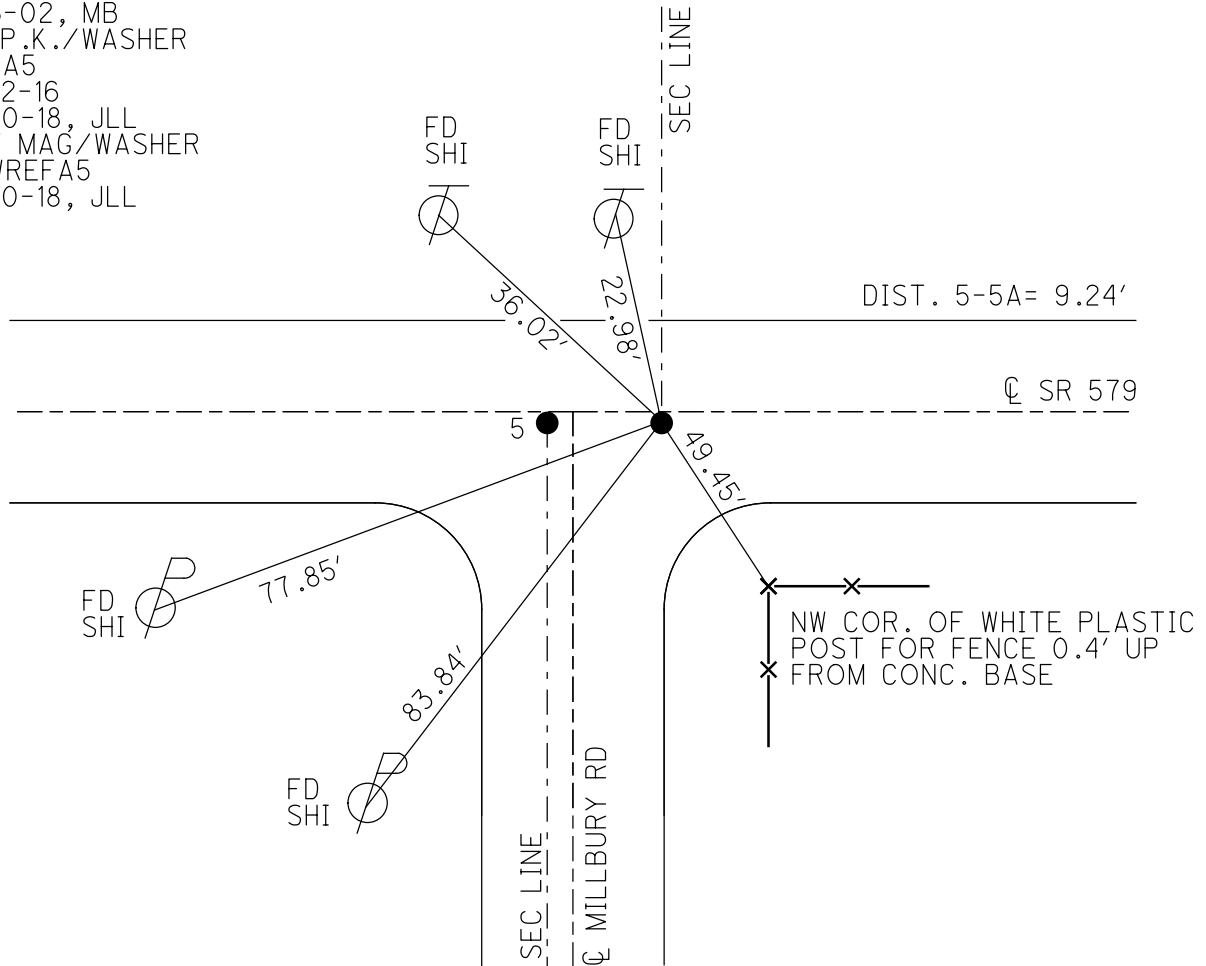
PERSONNEL _____ REFERENCE NO. 5 A SHEET 15 OF 16
 NOTES HAGEMeyer DATE 5/30/18 ROUTE SR 579
 H.C. LUE WEATHER SUNNY COUNTY WOOD
 R.C. HAGEMeyer TEMP. 74° TOWNSHIP LAKE
 SECTION 1
 DWG BY MILLER PID 97012 T 7 N R 12 E

TYPE MONUMENT _____ P.K./WASHER _____
 ON SURFACE - ~~BELOW~~ ON _____
 OFFSET \bar{C} PAVEMENT 1.7' ~~LT~~ : RT
12.5 TO LT EDGE PAVEMENT
 STATION: 101+07.12

HORZ.DATUM: NAD83(2011) GEOID: GEOID12A
 GRID: NORTHING: 706366.222 EASTING: 1715392.644



RECORD:
 FD P.K./WASHER
 8-30-02, MB
 SET P.K./WASHER
 11-6-02, MB
 FD P.K./WASHER
 REFA5
 8-22-16
 5-30-18, JLL
 SET MAG/WASHER
 NEWREFA5
 7-30-18, JLL



O.D.O.T. DISTRICT 2 SURVEY OFFICE

PERSONNEL _____

REFERENCE NO. 5

SHEET 6 OF 6

NOTES BARNHISEL

H.C. CANTERBURY

R.C. BARNHISEL

DATE 8-30-02

WEATHER SUN

TEMP. +75°

ROUTE S.R. # 579

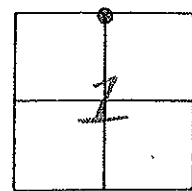
COUNTY Wood

TOWNSHIP LAKE

SECTION 1

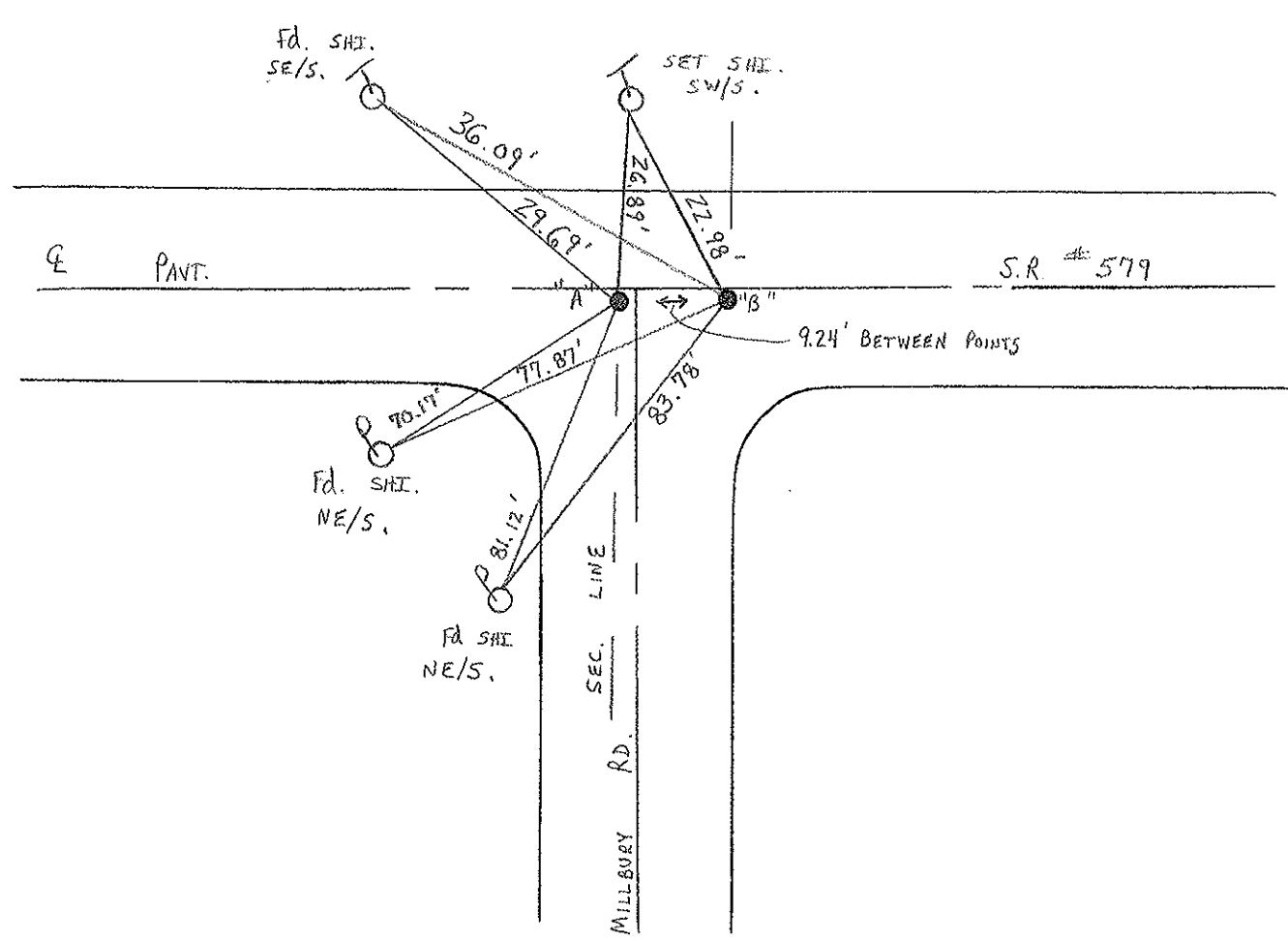
T 7 N R 12 E

	PT A	PT B
TYPE MONUMENT	P.K. / WASHER	P.K. SHANK
ON SURFACE - BELOW	SURFACE	1" BELOW
LEFT- & PAV'T. - RIGHT	0.2 RT.	0.2 RT.
12.5' TO N EDGE PAVEMENT	1.5' W. of & South	7.7' EAST of & South
S.L.M.	101+09	101+18



NOTE: PT "A" PAINTED W/ AERIAL TARGET
ASSUMED TO BE 1/4 SEC. PT.

RESET P.K'S/WASHER'S
11-06-02
M.B.



O.D.O.T. DISTRICT 2 SURVEY OFFICE

PERSONNEL

REFERENCE NO. 5

SHEET 11 OF 12

NOTES P. Cheney

H.C. R. BARBOUR

R.C. J. Ripple

R. Geyman

DATE 11-13-91

WEATHER Cloudy

TEMP. 40°

ROUTE 579

COUNTY Wood

TOWNSHIP LAKE

SECTION 1

T 7 N R 12 E

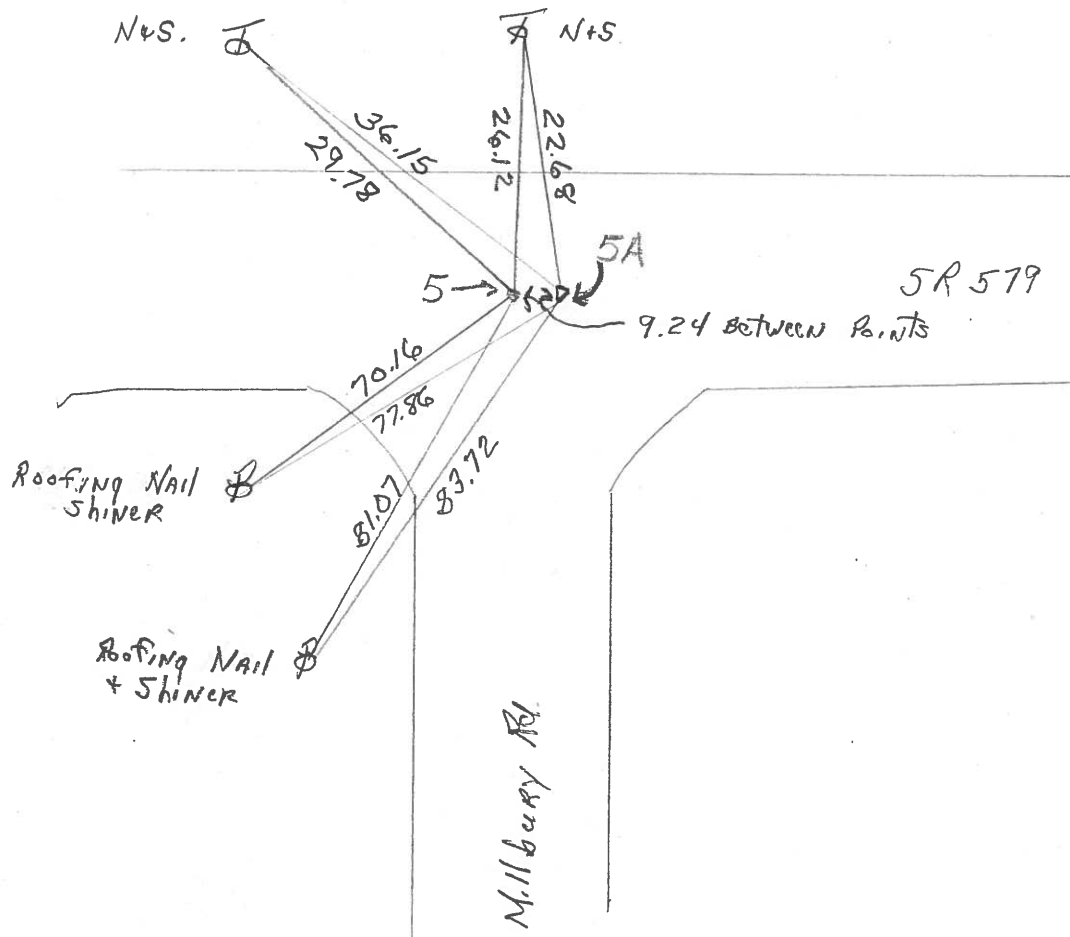
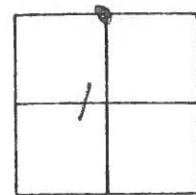
TYPE MONUMENT P.K. Washer

~~ON SURFACE~~ - BELOW P.K.

~~LEFT & PAV'T.~~ - RIGHT 2'

12.5' TO N. EDGE PAVEMENT

S.L.M. 101+11



County Wood S.R. 579

Township Lake

Section 1

T N, R E

Personnel I. Stone

P. Neuse

P. Michalak

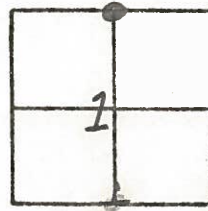
D. Curtis

#5

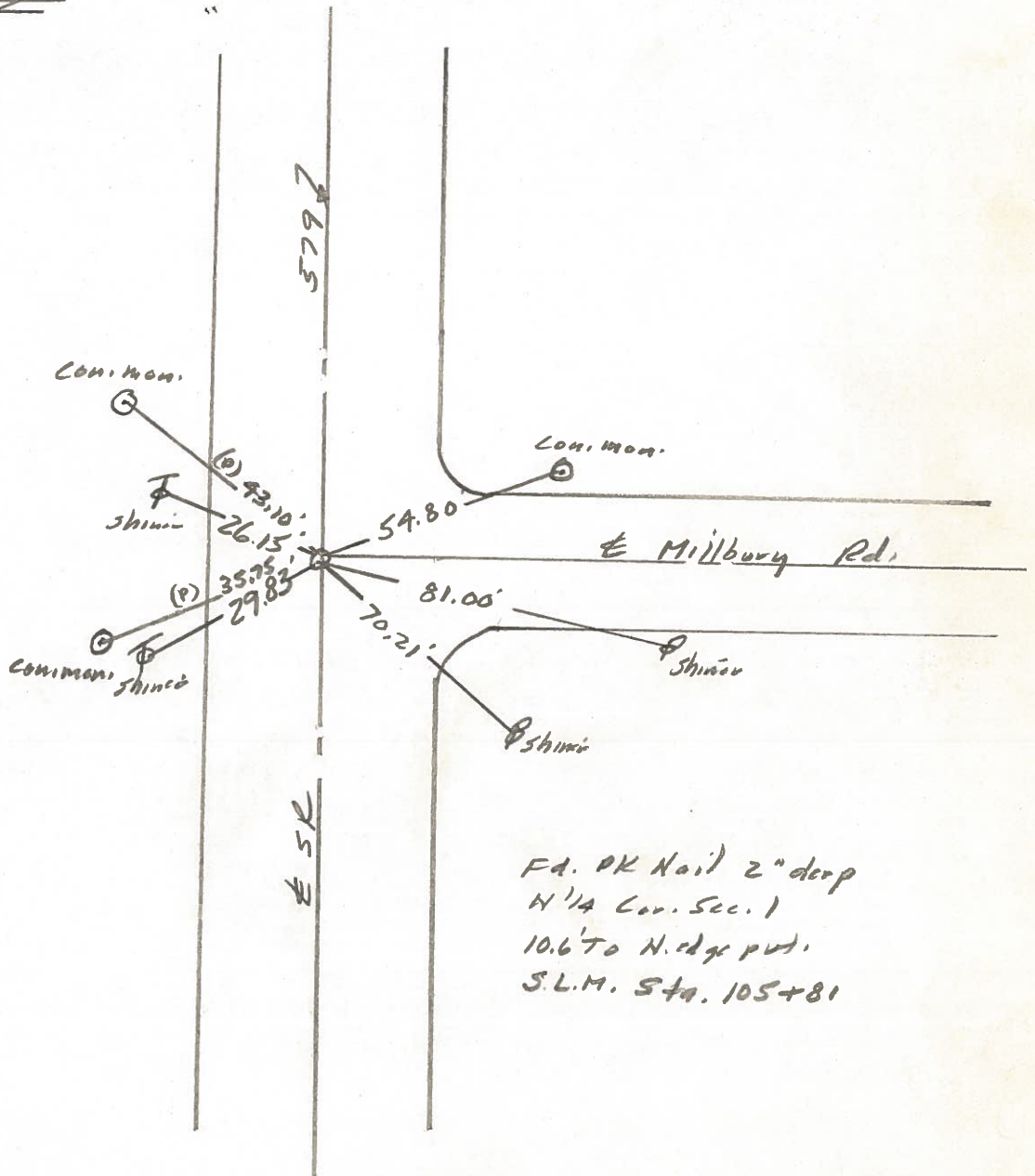
Date 20 May 82

Weather Warm

Temp. 70°



REF. NO. 5



PERSONNEL	TITLE	PERSONNEL	TITLE	COUNTY	DATE
BURNSIDE				Wood	2-16-77
SMITH				S. R. 579	WEATHER CLEAR
BOWERS				SEC. MILLBURY RD.	TEMP. +22°
MEAD					

DESCRIPTION ± CONTROL POINTS JOB NO. _____

