

Office

SCHNEIDER

MAINTENANCE PROGRAM 1981

PART 1 OF 2

(TOP) TYPE 404 THICKNESS 1/4" PRIORITY

(BASE) TYPE THICKNESS PENETRATION

END LOG S.L.M. 5.34 (SR 25 Construction Joint 281+95.2 Measured 280+53)
BEGIN LOG S.L.M. 2.61 (SR 64 Construction Joint 137+28)
TOTAL LENGTH 2.73

COUNTY Wood SECTION 2.61 WIDTH (16) 17' Haskins BERM CURBED (2'±)
ROUTE SR 582 SECTION 3.10 WIDTH (16) 17'
SECTION 5.34 WIDTH ()
ORDINANCE Haskins SECTION WIDTH ()
END LOG 3.10 SECTION WIDTH ()
BEGIN LOG 2.61 SECTION WIDTH ()

EXISTING BERM TYPE stabilized EXISTING BERM WIDTH 2' ± MAILBOX APPROACHES No. 0
(PAVED, STABILIZED, AGGREGATE) MANHOLES 0

PROPOSED BERM TYPE 404 PROPOSED BERM WIDTH 2" X INLETS CATCH BASINS 0

INTERSECTIONS 4 ASPHALT DRIVEWAYS 7 CONCRETE DRIVEWAYS 2

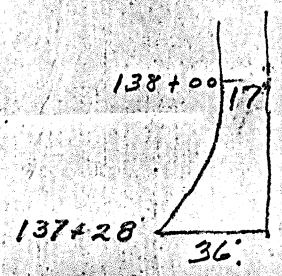
STRUCTURES

Table with columns: STRUCTURE NO., WIDTH, LENGTH, APPR. SLABS. Includes handwritten entries like 215+34 and C410.

RAILROAD CROSSINGS

Table with columns: NAME R. R., STATION, No., TRACKS. Includes handwritten entries for stationing and track counts.

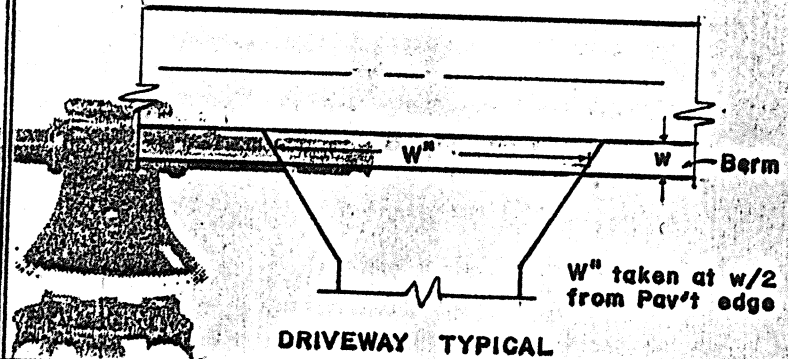
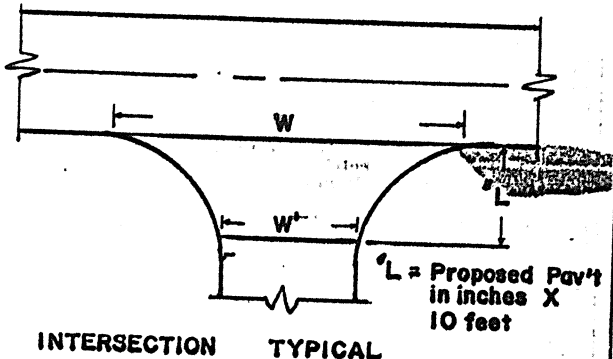
*Indicate length of crossing along E Pav't.



NOTES

No life-lites
[Blank lines for notes]

PERSONNEL TITLE PERSONNEL TITLE SHEET NO. 1
 Schneider COUNTY Wood DATE 12-11-80
 Mosser S. R. 582 WEATHER Sunny
 Barbour SEC. 261-534 TEMP. 20°
 DESCRIPTION Maintenance program 1981 JOB NO. _____
 LEFT CENTER LINE RIGHT



STATION	RT. LT.	L	W	W'	Asph	Conc	STATION	RT. LT.	w	W''	Asph	Conc	Aggr	Dropped Curb Feather NOT Req'd
125+81	RT	12.5	55	26	✓		139+64	Lt.	2	61		✓		
155+78	RT.	12.5	38	18	✓		140+64	Lt.	2	28	✓			
155+74	Lt.	12.5	48	20	✓		142+16	Lt.	2	28	✓			
254+73	Lt.	12.5	60	26	✓		148+14	Lt.	2	28	✓			
							143+97	Lt.	2	30	✓			
							208+76	RT	2	24		✓		
							212+18	RT	2	32	✓			
							242+40	Lt.	2	36	✓			
							245+02	RT.	2	52	✓			