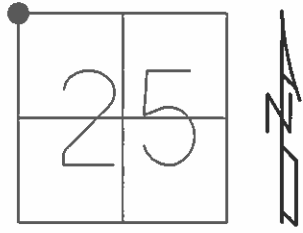


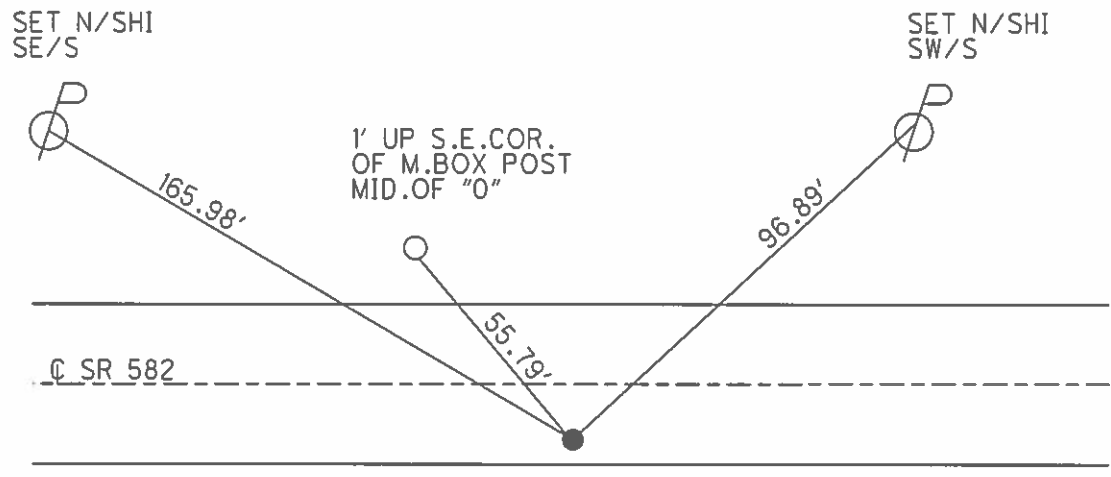
O.D.O.T. DISTRICT 2 SURVEY OFFICE (USE ONLY)

PERSONNEL _____ REFERENCE NO. 15 SHEET 17 OF 25
 NOTES RHOADES DATE 4/9/14 ROUTE SR 582
 H.C. ROUSOS WEATHER CLEAR COUNTY WOOD
 R.C. HOMAN TEMP. 45° TOWNSHIP MIDDLETON
GABLE SECTION 25
 T 6 N R 10 E

TYPE MONUMENT MAG/WASHER
 ON SURFACE - ~~BELOW~~ ON
~~LEFT~~ - Q PAV'T - RIGHT 8.0'
2.0' TO RT EDGE PAVEMENT
 S.L.M. 229+64
 Grid: Northing: 655110.046 Easting: 1647860.010



RS.#14028



SET MAG/WASHER
 7/30/04, MC
 FND MAG/WASHER
 GPS, REF15
 3/14/14, DCH
 SET MAG/WASHER
 GPS, NEWREF15
 7/29/14, EBW

O.D.O.T. DISTRICT 2 SURVEY OFFICE

PERSONNEL _____

REFERENCE NO. 15

SHEET 14 OF 23

NOTES M.L.

H.C. M.B.

R.C. M.L.

DATE 4-26-04

WEATHER pt cloudy

TEMP. + 55°

ROUTE S.R. 582

COUNTY WOOD

TOWNSHIP MIDDLETON

SECTION 25

T G N R 10 E

Drawn (Joe Kolehmainen)

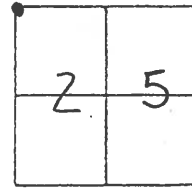
TYPE MONUMENT P.K./washer

ON SURFACE - ~~BELOW~~ Yes

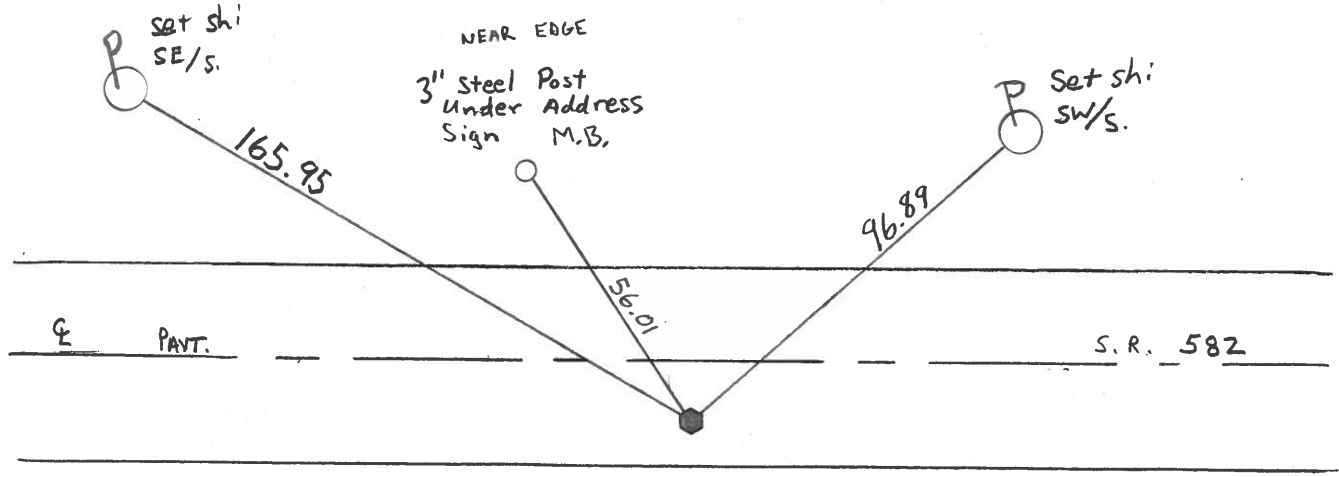
~~LEFT~~ - & PAV'T. RIGHT 8.0' RT

2.0 TO RT. EDGE PAVEMENT

S.L.M. 229+64



Reset Mag $\frac{1}{2}$ Washer
7/30/04
MB



O.D.O.T. DISTRICT 2 SURVEY OFFICE

PERSONNEL

REFERENCE NO. 15

SHEET _____ OF _____

NOTES BARNHISEL

H.C. HOFFMAN

R.C. Lochete

DATE 9-6-89

WEATHER P+ cloudy

TEMP. +70°

ROUTE S.E. 582

COUNTY WOOD

TOWNSHIP MIDDLETON

SECTION 25

T. 6 N R. 10 E

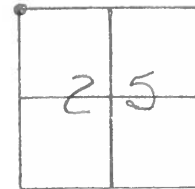
TYPE MONUMENT Sm RR Spk

ON SURFACE - ~~BELOW~~ yes

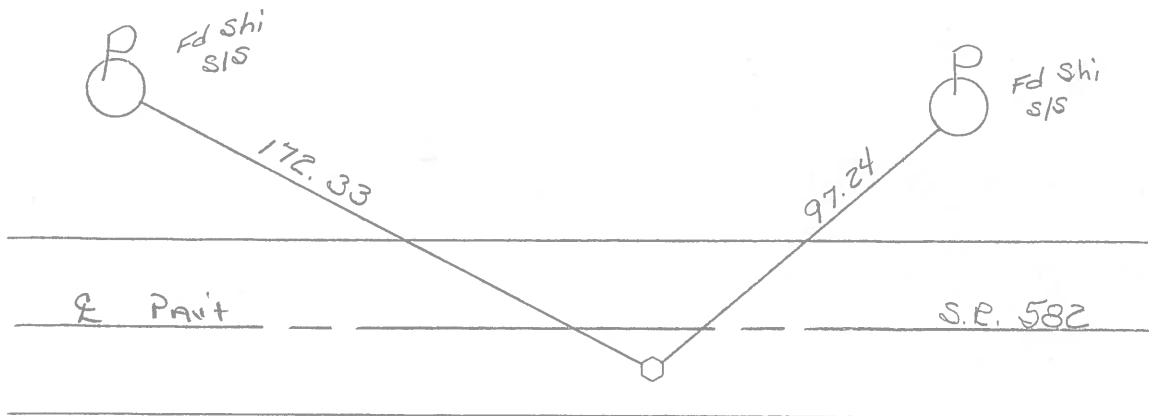
LEFT - ~~C~~ PAV'T. - RIGHT 6.6

3.3 TO R+ EDGE PAVEMENT

S.L.M. 229 + 62.81



Set PK & Washer
11-8-89
YMB



County WOOD S.R. 582

Date 11-19-81

Township MIDDLETON

Weather OVERCAST

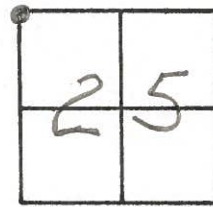
Section 25

Temp. +45°

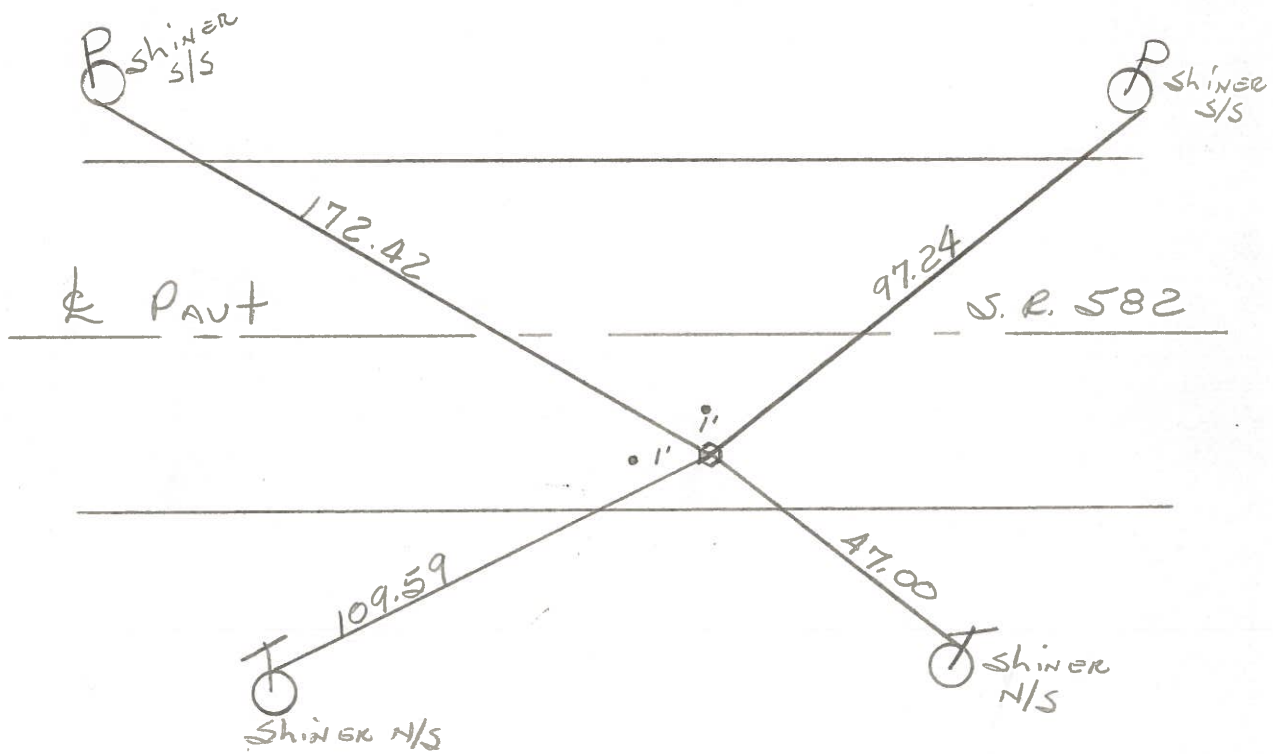
T₁₀N, R₁₀E

Personnel HOFFMAN
Householder
Loehrke

#15



Fd. R.R. SPK 4 1/2" below surface
6.6' S. of & PAUT 582
4.4' N. of S.F.P.



Set small R.R. SPK @ SURFACE 11-19-81