

O.D.O.T. DISTRICT 2 SURVEY OFFICE (USE ONLY)

PERSONNEL

REFERENCE NO. 17 A

SHEET 22 OF 29

NOTES LEU

DATE 5/28/20

ROUTE SR 582

H.C. O'DONNELL

WEATHER CLOUDY

COUNTY WOOD

R.C. AUBLE

TEMP. 72°

TOWNSHIP MIDDLETON

RHOADES

SECTION 30

DWG BY GARRETT PID 95722

T 6 S R 11 E

TYPE MONUMENT MAG/WASHER

ON SURFACE - ~~BELOW~~ ON

OFFSET \odot PAVEMENT 1.2' LT : ~~RT~~

10.0' TO LT EDGE PAVEMENT

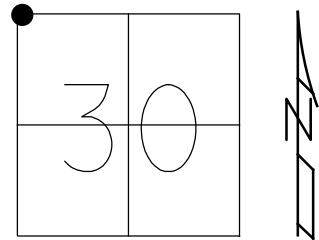
STATION: 282+07.7

HORIZ.DATUM: NAD83 (2011)

GEOID: 2012A

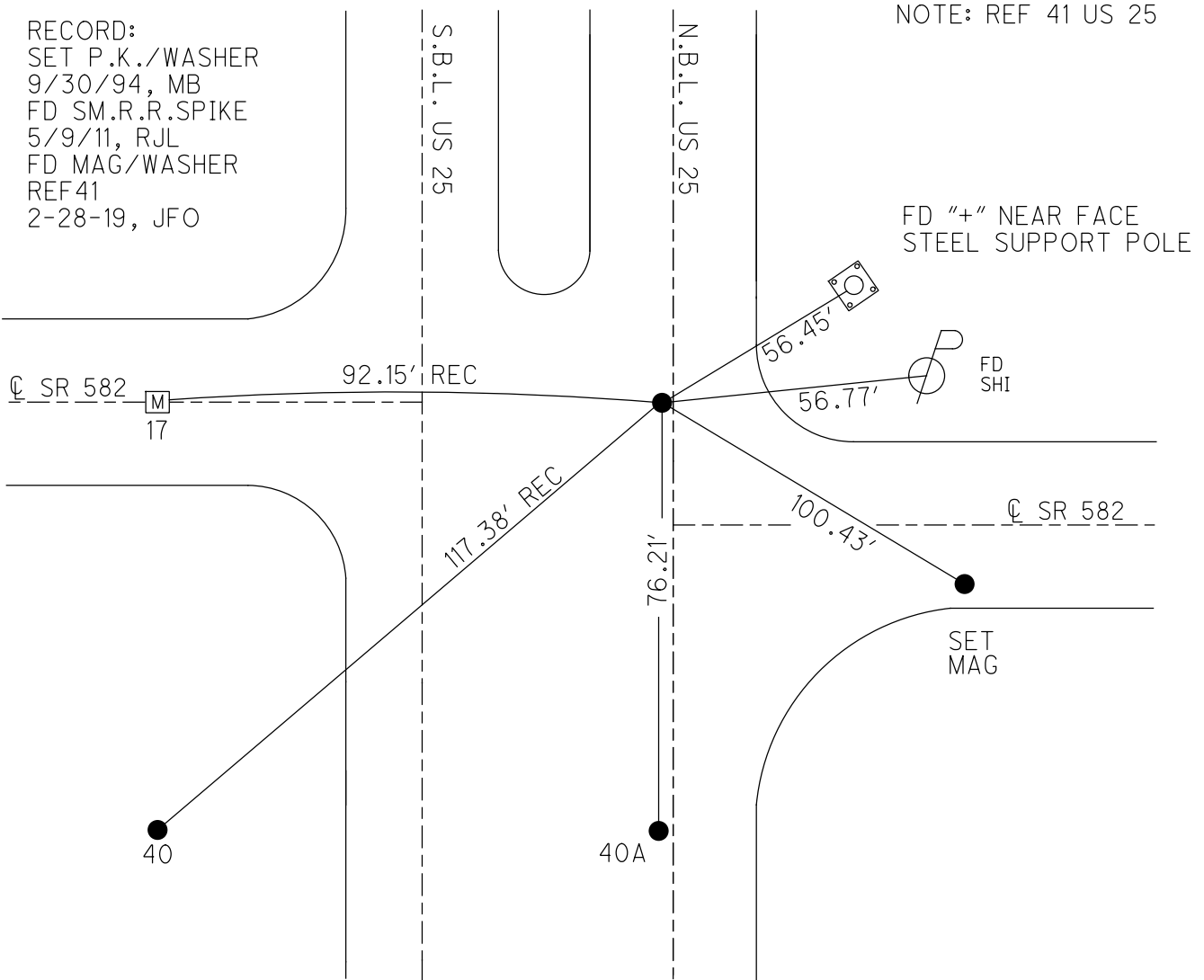
GRID: NORTHING: 654933.983

EASTING: 1653101.598



RECORD:
 SET P.K./WASHER
 9/30/94, MB
 FD SM.R.R.SPIKE
 5/9/11, RJL
 FD MAG/WASHER
 REF41
 2-28-19, JFO

NOTE: REF 41 US 25



O.D.O.T. DISTRICT 2 SURVEY OFFICE

3 OF 12

PERSONNEL

REFERENCE NO. 40 & 41

SHEET 12 OF 12

NOTES VAN DUSEN

H.C. BARNHISEL

DATE 8-1-94

ROUTE U.S. 25

R.C. HERMILIER

WEATHER CLEAR

COUNTY WOOD

SLOVAK

TEMP. +75°

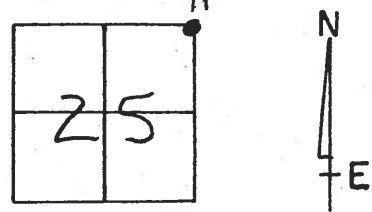
TOWNSHIP MIDDLETON

SECTION 25

T6 NR 10 E

TYPE MONUMENT Pt. "A" Pt. "B"
Sm. RR. SPK'S
 ON SURFACE - ~~YES~~ yes
 LEFT- & PAVT. - ~~RIGHT~~ 1.2 N.B.L.
10.0 TO LT EDGE PAVEMENT
 S.L.M. 827+76 828+53

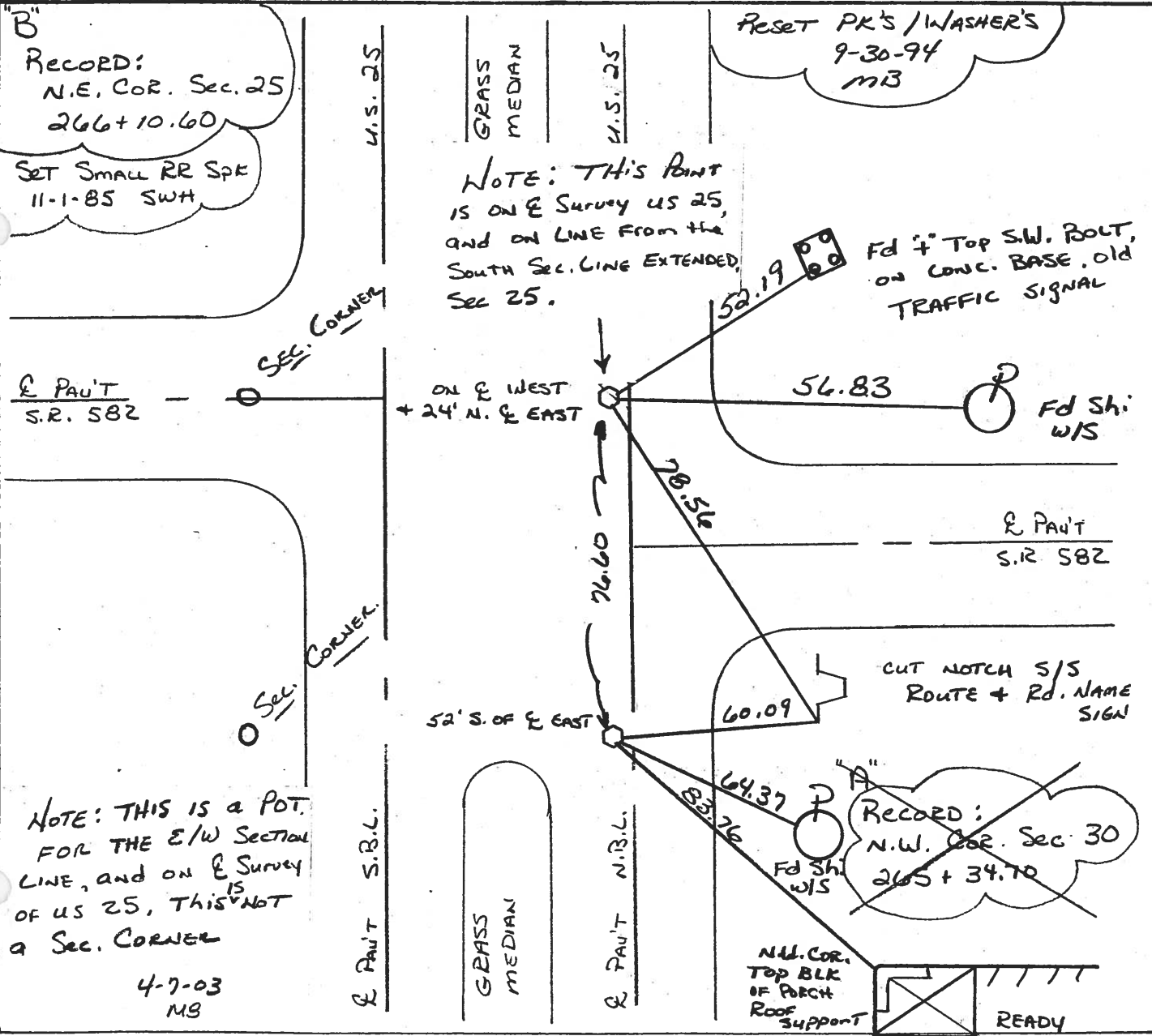
NOTE:
 PT. "A" & PT. "B"
 NOT RE-SURV.
 MB



"B"
 RECORD:
 N.E. COR. Sec. 25
 266+10.60
 SET SMALL RR SPK
 11-1-85 SWH

RESET PK'S / WASHER'S
 9-30-94
 MB

NOTE: THIS POINT
 IS ON E SURVEY US 25,
 AND ON LINE FROM THE
 SOUTH SEC. LINE EXTENDED,
 SEC 25.



NOTE: THIS IS A POT.
 FOR THE E/W SECTION
 LINE, AND ON E SURVEY
 OF US 25, THIS IS NOT
 A SEC. CORNER
 4-7-03
 MB

~~RECORD:
 N.W. COR. Sec. 30
 265+34.70~~

N.W. COR.
 TOP BLK
 OF PORCH
 ROOF
 SUPPORT



O.D.O.T. DISTRICT 2 SURVEY OFFICE

PERSONNEL

REFERENCE NO. 40 & 41

SHEET 17 OF 23

NOTES VAN DUSEN

H.C. BARNHISEL

DATE 8-1-94

ROUTE U.S. 25

R.C. HERMILER

WEATHER CLEAR

COUNTY WOOD

SLOVAK

TEMP. +75°

TOWNSHIP MIDDLETON

SECTION 25

T. 6 N. R. 10 E.

TYPE MONUMENT Sm. RR. Spk's

ON SURFACE - ~~BELOW~~ yes

LEFT - 0 PAV'T. - ~~RIGHT~~ 1.2 N.B.L.

10.0 TO LT. EDGE PAVEMENT

S.L.M. 827+76 828+53

