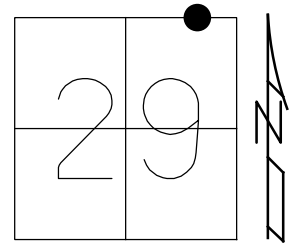


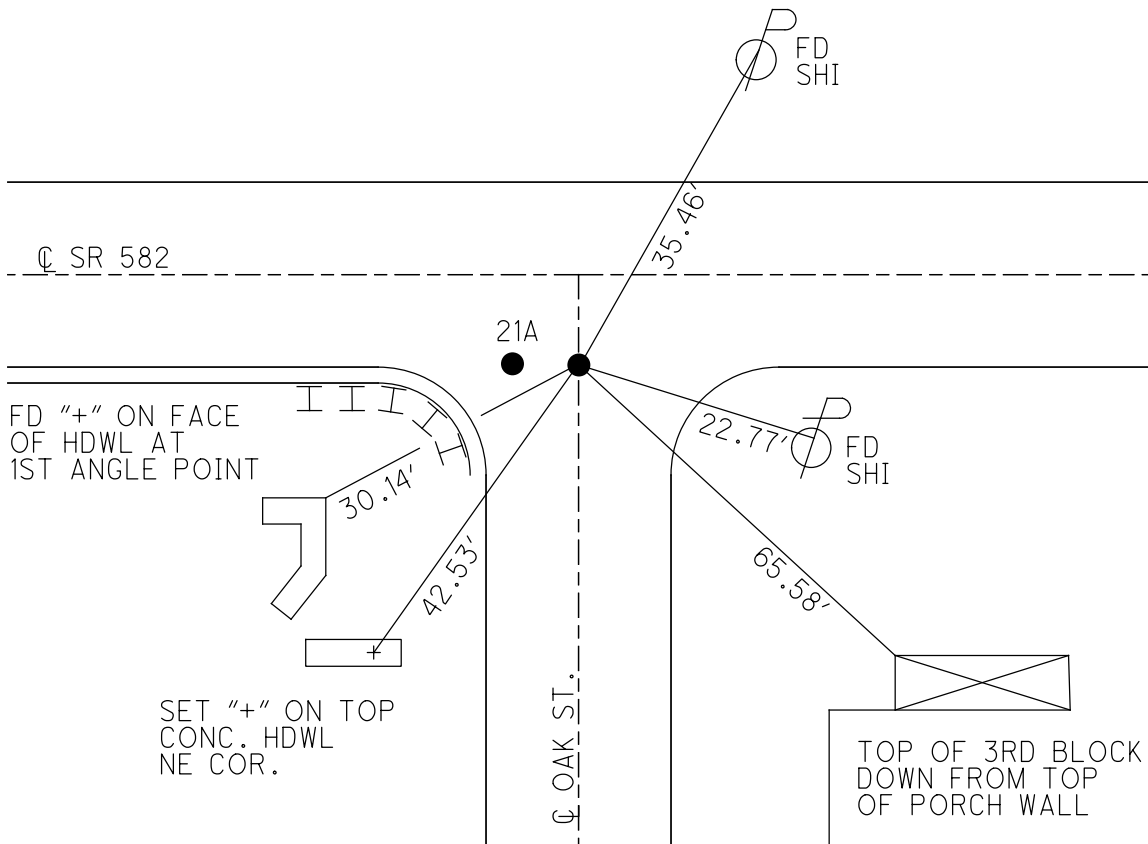
O.D.O.T. DISTRICT 2 SURVEY OFFICE (USE ONLY)

PERSONNEL \_\_\_\_\_ REFERENCE NO. 22 SHEET 28 OF 29  
 NOTES LEU DATE 4/14/15 ROUTE SR 582  
 H.C. WESTFALL WEATHER OVERCAST COUNTY WOOD  
 R.C. LEU TEMP. 53° TOWNSHIP MIDDLETON  
 DWG BY BALBAUGH PID 81000 SECTION 29  
 T 6 N R 11 E

TYPE MONUMENT MAG/WASHER  
 ON SURFACE - ~~BELOW~~ ON  
 OFFSET  $\odot$  PAVEMENT 9.3' ~~ET~~ : RT  
0.5' TO RT EDGE PAVEMENT  
 STATION: 387+74.17  
 HORZ. DATUM: NAD83 (2011) GEOID: 2012A  
 GRID: NORTHING: 654507.577 EASTING: 1663602.500



RECORD:  
 FD P.K./WASHER  
 4/27/04, MC  
 SET MAG/WASHER  
 10/20/04, MC  
 FD MAG/WASHER  
 4/14/15, EBW  
 SET MAG/WASHER  
 4/23/19, JLL



O.D.O.T. DISTRICT 2 SURVEY OFFICE

PERSONNEL \_\_\_\_\_

REFERENCE NO. 22

SHEET 24 OF 25

NOTES CANTERBURY

DATE 4/27/04

ROUTE SR 582

H.C. HUSS

WEATHER OVERCAST/WINDY

COUNTY WOOD

R.C. CANTERBURY

TEMP. 45°

TOWNSHIP MIDDLETON

SECTION 29

T 6 N R 11 E

TYPE MONUMENT P.K./WASHER

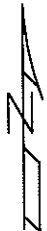
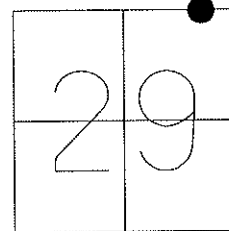
ON SURFACE - ~~BELOW~~ ON

~~LEFT~~ - Q PAV'T - RIGHT 9.3'

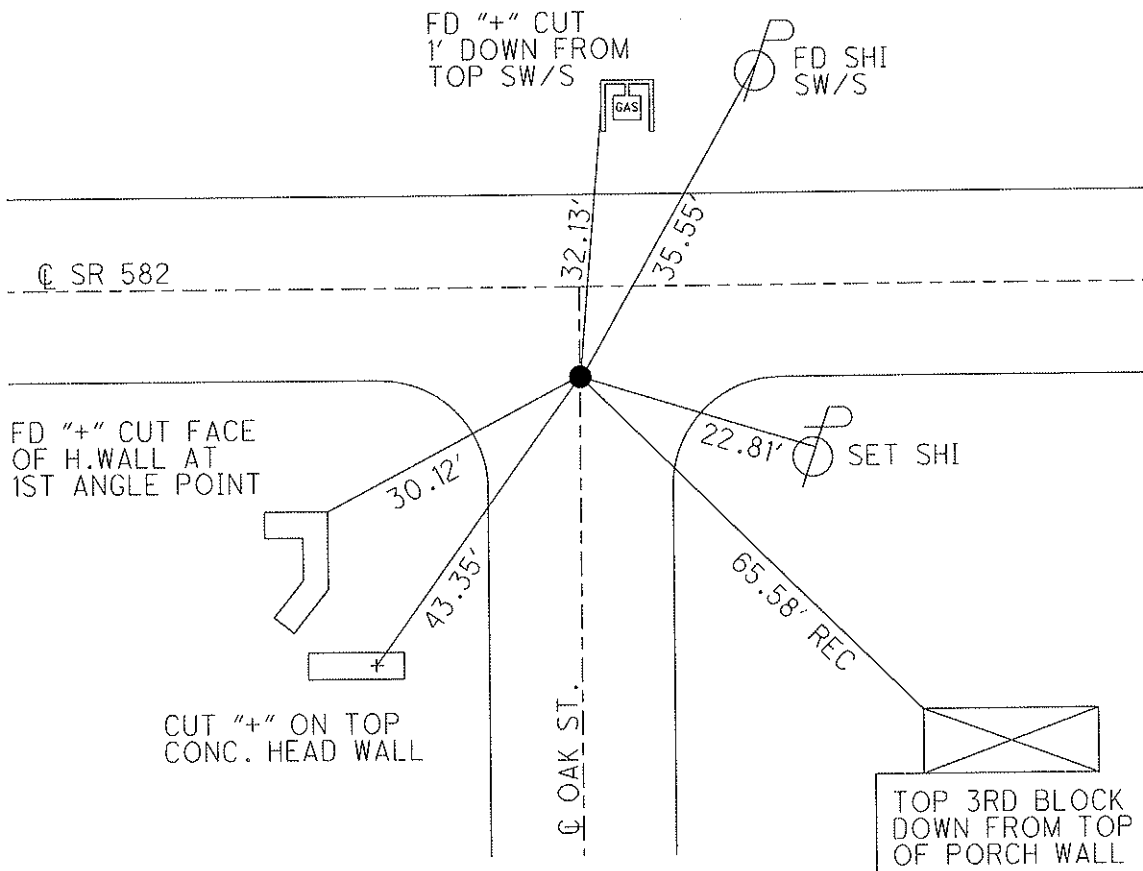
0.5' TO RT EDGE PAVEMENT

S.L.M. 387+34, ON Q OAK ST.

Grid: Northing: \_\_\_\_\_ Easting: \_\_\_\_\_



RESET MAG/WASHER  
10/20/04, MC



# O.D.O.T. DISTRICT 2 SURVEY OFFICE

PERSONNEL \_\_\_\_\_

REFERENCE NO. 22

SHEET 22 OF 23

NOTES CANTERBURY

H.C. HUSS

R.C. CANTERBURY

DATE 4/27/04

WEATHER OVERCAST/WINDY

TEMP. +45°

ROUTE S.R. 582

COUNTY WOOD

TOWNSHIP MIDDLETON

SECTION 29

T 6 N R 11 E

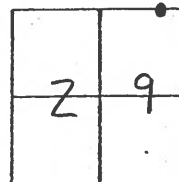
TYPE MONUMENT P.K. / WASHER

ON SURFACE - ~~BELOW~~ SURFACE

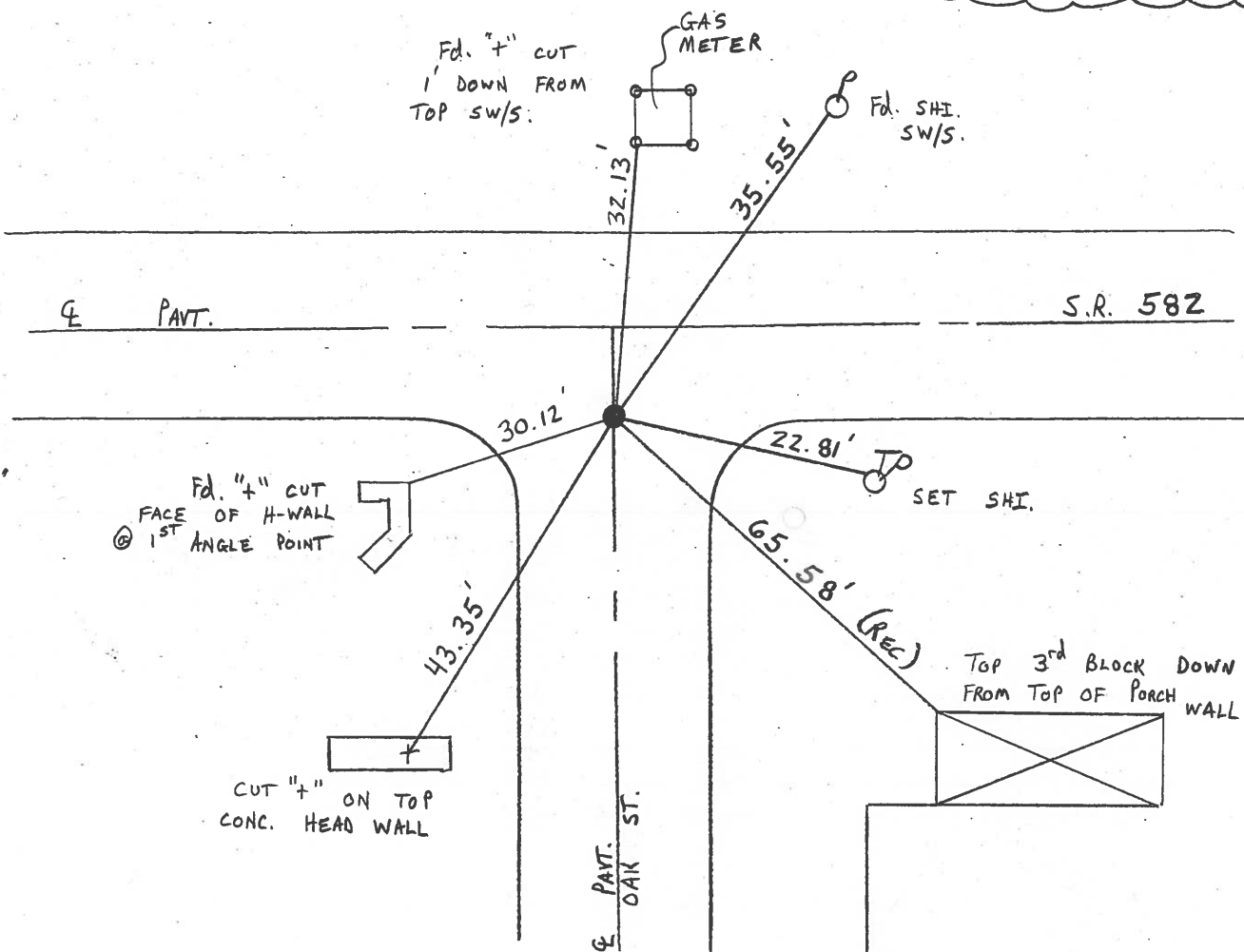
~~LEFT- & PAV'T.~~ - ~~RIGHT~~ 9.3 RT &

0.5 TO RT EDGE PAVEMENT ON & OAK ST.

S.L.M. 387 + 34



RESET MAG/WASHER  
 10/20/04  
 M.C.



# O.D.O.T. DISTRICT 2 SURVEY OFFICE

PERSONNEL

REFERENCE NO. 22

SHEET 5 OF 6

NOTES CHENEY

H.C. BARBOUR

R.C. GEYMAN

DATE 10-4-1991

WEATHER CLOUDY

TEMP. 65°

ROUTE 582

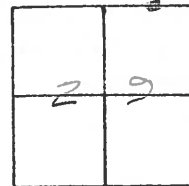
COUNTY WOOD

TOWNSHIP MIDDLETON

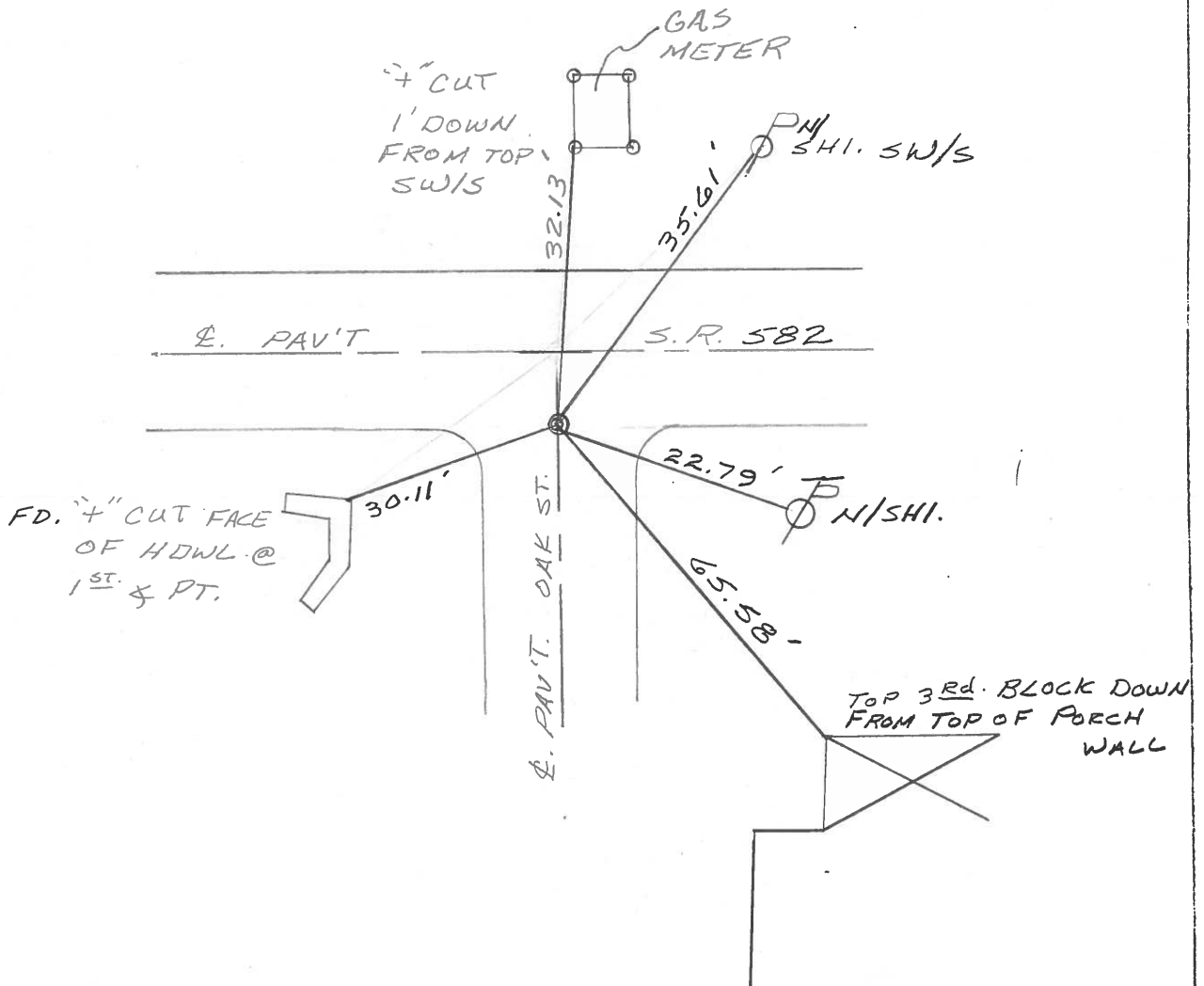
SECTION 29

T6N R11E

TYPE MONUMENT RE-SET PK/WASHER  
 ON SURFACE - BELOW  
 LEFT - C PAV'T. - RIGHT 8.4'  
 — TO — EDGE PAVEMENT  
 S.L.M. 387+34



ON & OAK ST.  
 PREVIOUS MONUMENTS:  
 PK/WASHER  
 S.M. R.R. SPK.



County Wood S.R. 582

Date 5-6-82

Township MIDDLETON

Weather Clear - Windy

Section 29

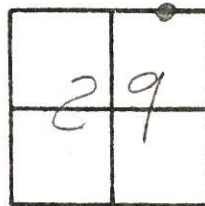
Temp. +75°

T&N, RILE

Personnel HOFFMAN

#22

+  
CREW



Fd small R.R. SPIC @ surface

SLM ± 387+34

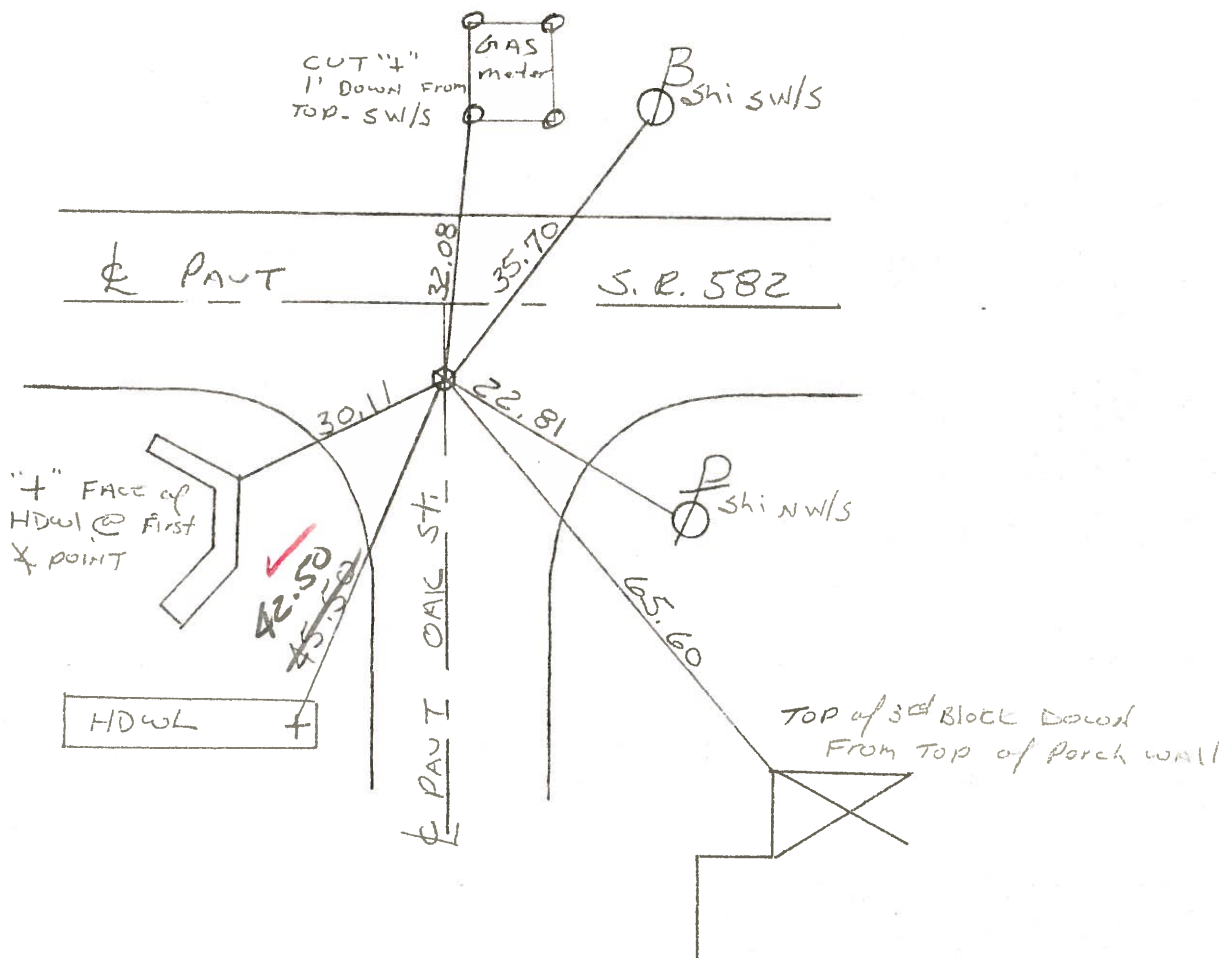
8.4' RT. of & PAUT SR 582

oak & PAUT OAK ST.

Set PK/washer

6-17-82

SWK



Q.D.O.T. DISTRICT 2 SURVEY OFFICE

SHEET \_\_\_\_\_ OF \_\_\_\_\_

County Wood S.R. 582

Date 5-6-82

Township MIDDLETON

Weather Clear - Windy

Section 29

Temp. +75°

T6N, R1E

Personnel HOFFMAN

+

#22 CREW



Fd small R.R. spike @ surface

SLM ± 387+34

8.4' R.T. of & PAUT SR 582  
on & PAUT OAK ST.

RE-SET P.K./WASHER  
6-17-82  
S.W.H.

