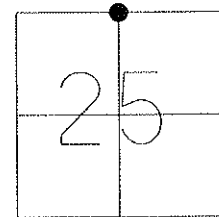


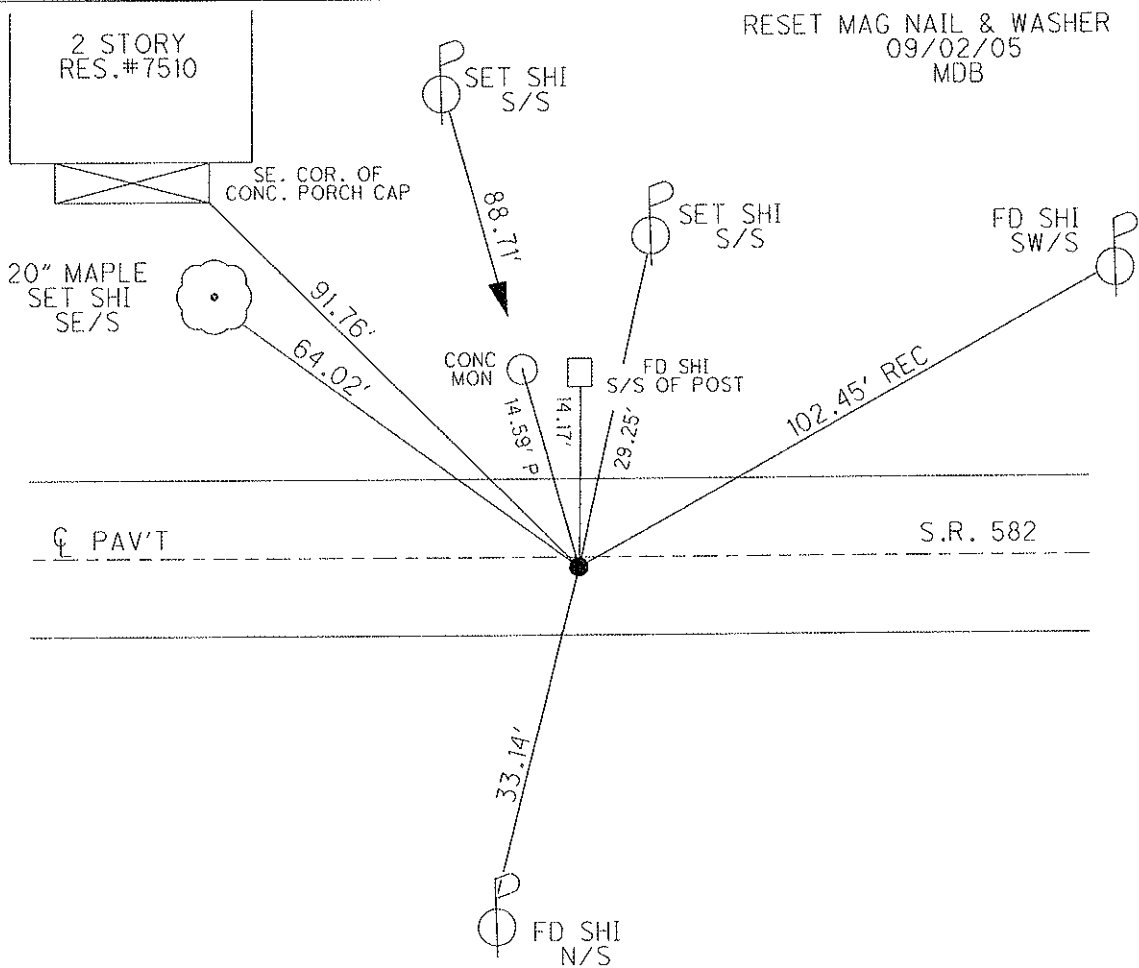
O.D.O.T. DISTRICT 2 SURVEY OFFICE

PERSONNEL	REFERENCE NO. <u>32</u>	SHEET <u>11</u> OF <u>20</u>
NOTES <u>BARNHISEL</u>	DATE <u>04/19/05</u>	ROUTE <u>S.R. 582</u>
H.C. <u>CANTERBURY</u>	WEATHER <u>CLOUDY</u>	COUNTY <u>WOOD</u>
R.C. <u>MIKLOVIC</u>	TEMP. <u>+60°</u>	TOWNSHIP <u>WEBSTER</u>
		SECTION <u>25</u>
		T. <u>6</u> N R. <u>11</u> E

TYPE MONUMENT PK & WASHER
 ON SURFACE - ~~BELOW~~ YES
~~LEFT~~ - Q PAV'T - RIGHT 0.7'
9.1' TO RT EDGE PAVEMENT
 S.L.M. 581+13



GRID: NORTHING: _____ EASTING: _____



RESET MAG NAIL & WASHER
 09/02/05
 MDB

O.D.O.T. DISTRICT 2 SURVEY OFFICE

PERSONNEL

REFERENCE NO. 32

SHEET 12 OF 21

NOTES BARNHISEL

DATE 04/19/05

ROUTE S.R. 582

H.C. CANTERBURY

WEATHER CLOUDY

COUNTY WOOD

R.C. MIKLOVIC

TEMP. +60°

TOWNSHIP WEBSTER

SECTION 25

T 6 N R 11 E

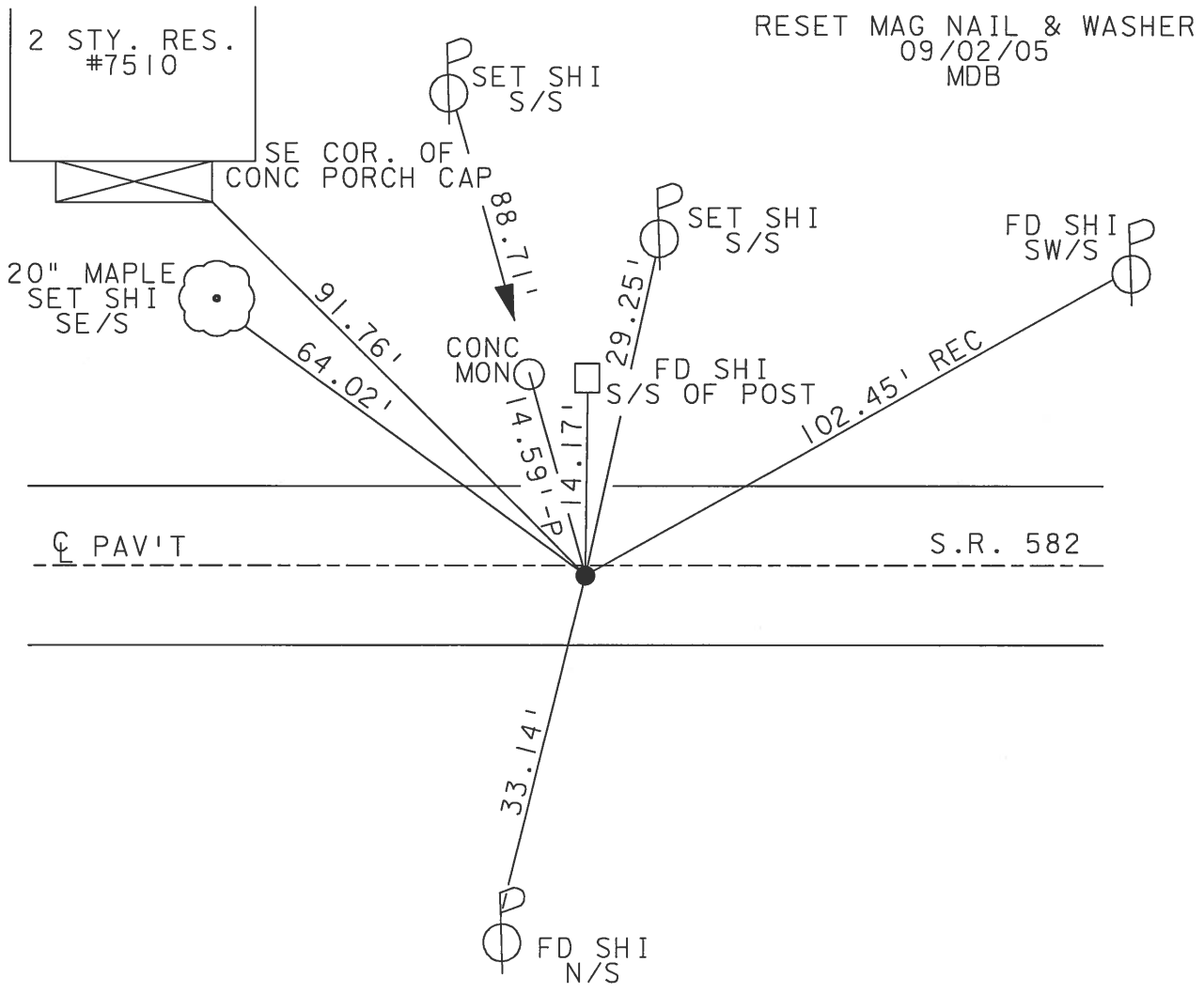
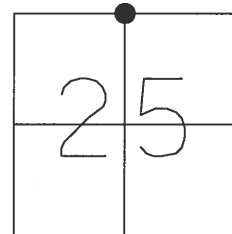
TYPE MONUMENT PK & WASHER

ON SURFACE - ~~BELOW~~ YES

~~LEFT~~ - Q PAV'T - RIGHT 0.7'

9.1' TO RT EDGE PAVEMENT

S.L.M. 581+13



RESET MAG NAIL & WASHER
09/02/05
MDB

O.D.O.T. DISTRICT 2 SURVEY OFFICE

PERSONNEL

REFERENCE NO. 32

SHEET _____ OF _____

NOTES LOGHRKE

H.C. HOFFMAN

DATE 7-12-90

ROUTE S.R. 582

R.C. STEINHAUSER

WEATHER cloudy

COUNTY WOOD

BAENHISEL

TEMP. +70°

TOWNSHIP Webster

SECTION 25

T. & N. R. 11 E

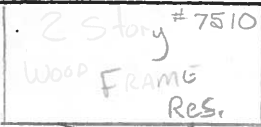
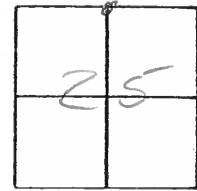
TYPE MONUMENT (Hex) Bolt

ON SURFACE - BELOW 3"

LEFT - & PAV'T. - RIGHT 0.7

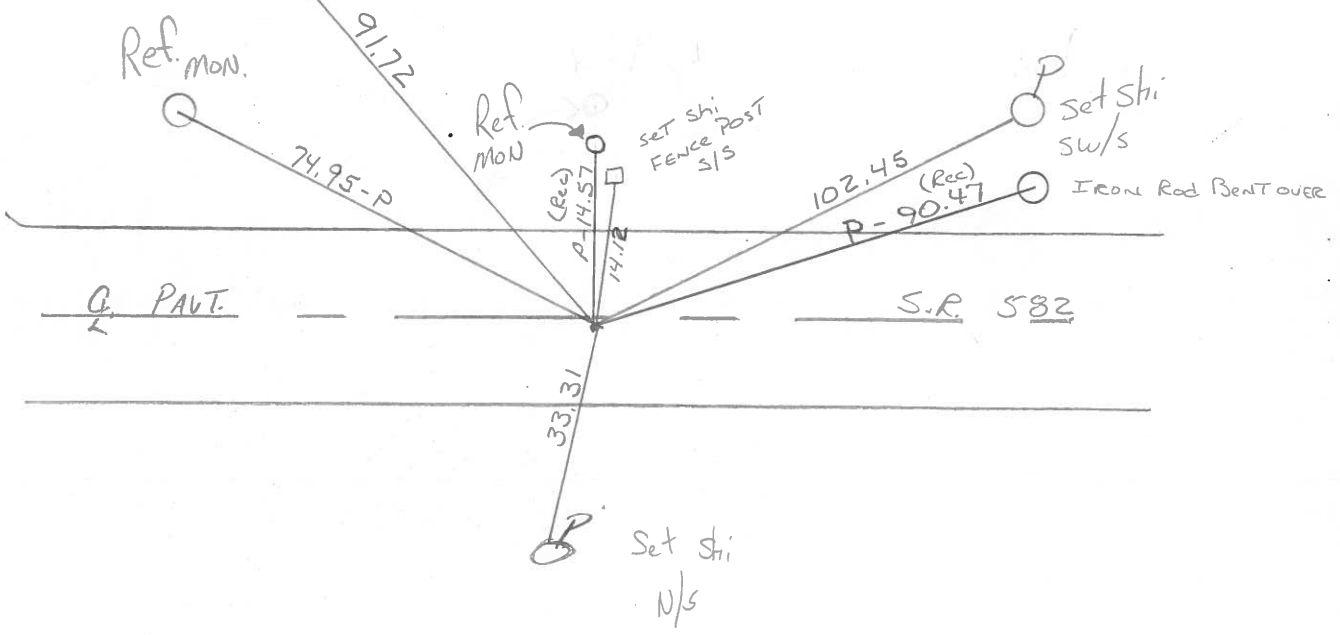
9.1 TO RT EDGE PAVEMENT

S.L.M. 581+13



SE CORNER of CONC Cap of Porch

Set P.K. Malashee
10-25-90
m/s



County Wood S.R. 582

Date 13 July 83

Township Webster

Weather Warm

Section 24

Temp. 80°

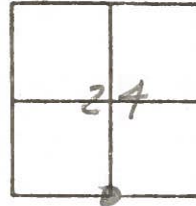
T N, R E

Personnel I. Stone

P. Neuse

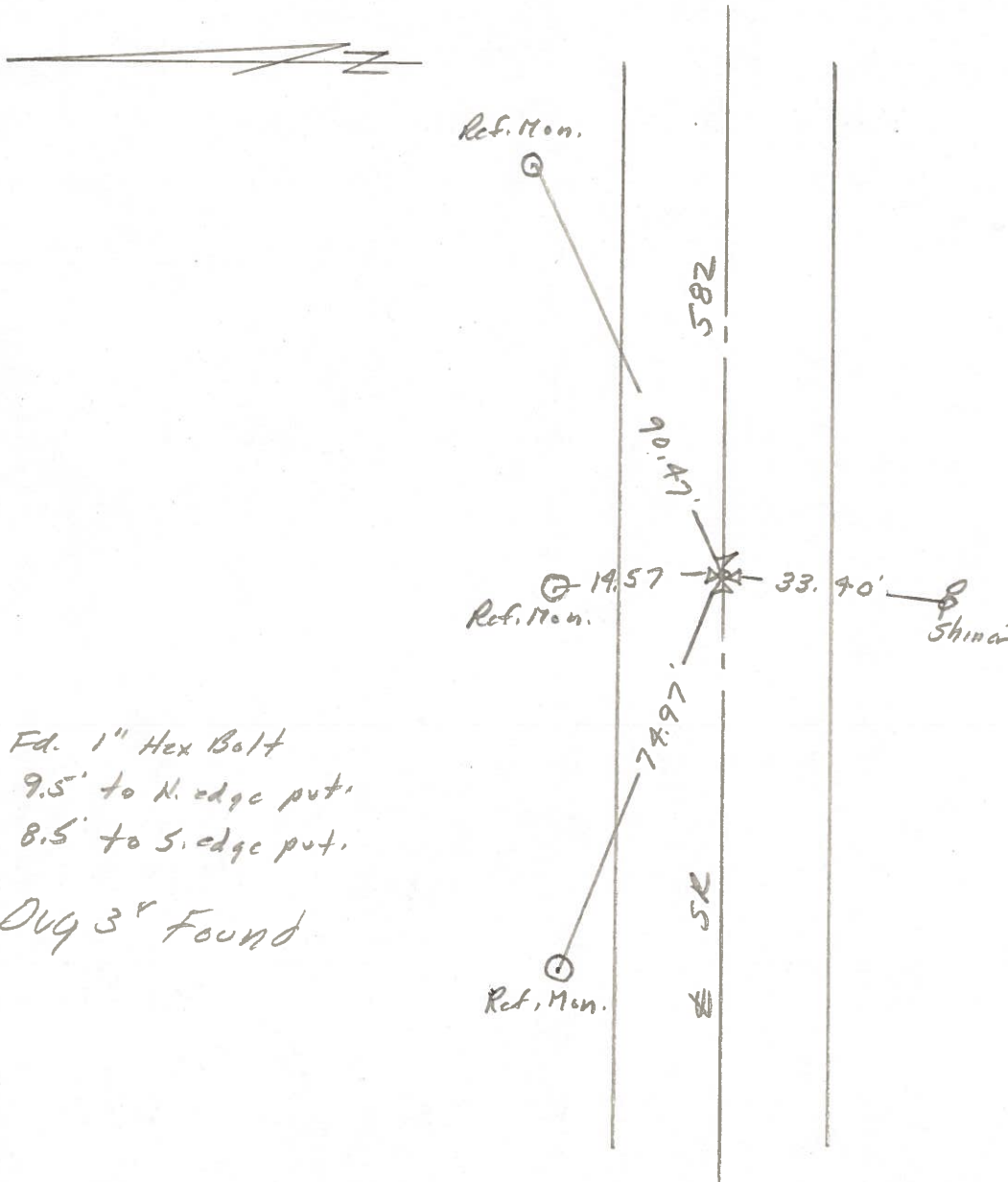
R. Michalak

D. Coatis



SLM Sta. 581 + 21

REF. NO. 32



Fd. 1" Hex Bolt
9.5' to N. edge put.
8.5' to S. edge put.

Dug 3" Found

PERSONNEL	TITLE	PERSONNEL	TITLE
BURNSIDE			
SMITH			
BOWERS			
MEAD			

COUNTY WOOD

DATE 9-25-74

S. R. 582

WEATHER CLEAR

SEC. 24

TEMP. +70°

DESCRIPTION REF. TO SEC. CORNER

JOB NO.

LEFT

CENTER LINE

RIGHT

#32

S. 1/4 COR. SEC. 24
 T-6-N R-11-E
 WEBSTER TWP.
 FD. BOLT IN CTR. PAV.

EST. BY WOOD COUNTY
 ENG. OFFICE

I. PIN IN CONC. MON.

I. PIN IN CONC. MON. (P)

I. PIN IN CONC. MON.

TOP CONC.
 BLK. HOUSE
 FDN.

36.00

582

14.33 (P)

92.09

74.91 (P)

582

