

O.D.O.T. DISTRICT 2 SURVEY OFFICE

PERSONNEL

REFERENCE NO. 33

SHEET 12 OF 20

NOTES BARNHISEL

DATE 05/20/05

ROUTE S.R. 582

H.C. CANTERBURY

WEATHER CLOUDY

COUNTY WOOD

R.C. MIKLOVIC

TEMP. +60°

TOWNSHIP WEBSTER

SECTION 30

T 6 N R 11 E

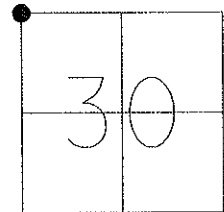
TYPE MONUMENT PK NAIL

ON SURFACE - ~~BELOW~~ ON

~~LEFT~~ - Q PAV'T - RIGHT 1.9'

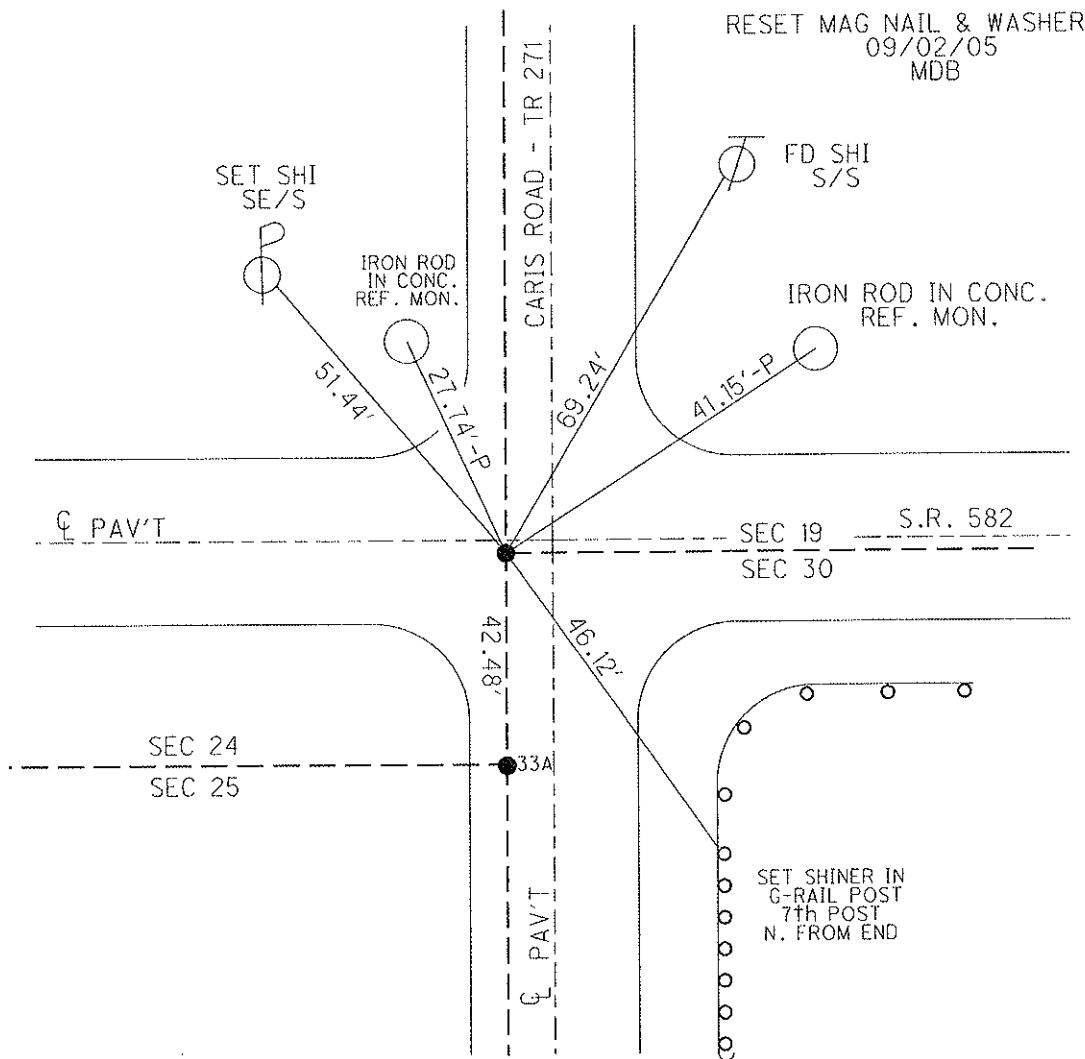
TO EDGE PAVEMENT

S.L.M. 607+83



GRID: NORTHING:

EASTING:



O.D.O.T. DISTRICT 2 SURVEY OFFICE

PERSONNEL _____ REFERENCE NO. 33 SHEET _____ OF _____

NOTES LOEHRKE

H.C. HOFFMAN

R.C. STEINHAUSER

BARNHISEL

DATE 7-12-90

WEATHER cloudy

TEMP. +70°

ROUTE S.R. 582

COUNTY WOOD

TOWNSHIP Webster

SECTION 30

T. 6 N. 17 E.

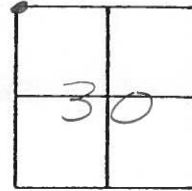
TYPE MONUMENT R.R. Spike

ON SURFACE - BELOW 1 1/2"

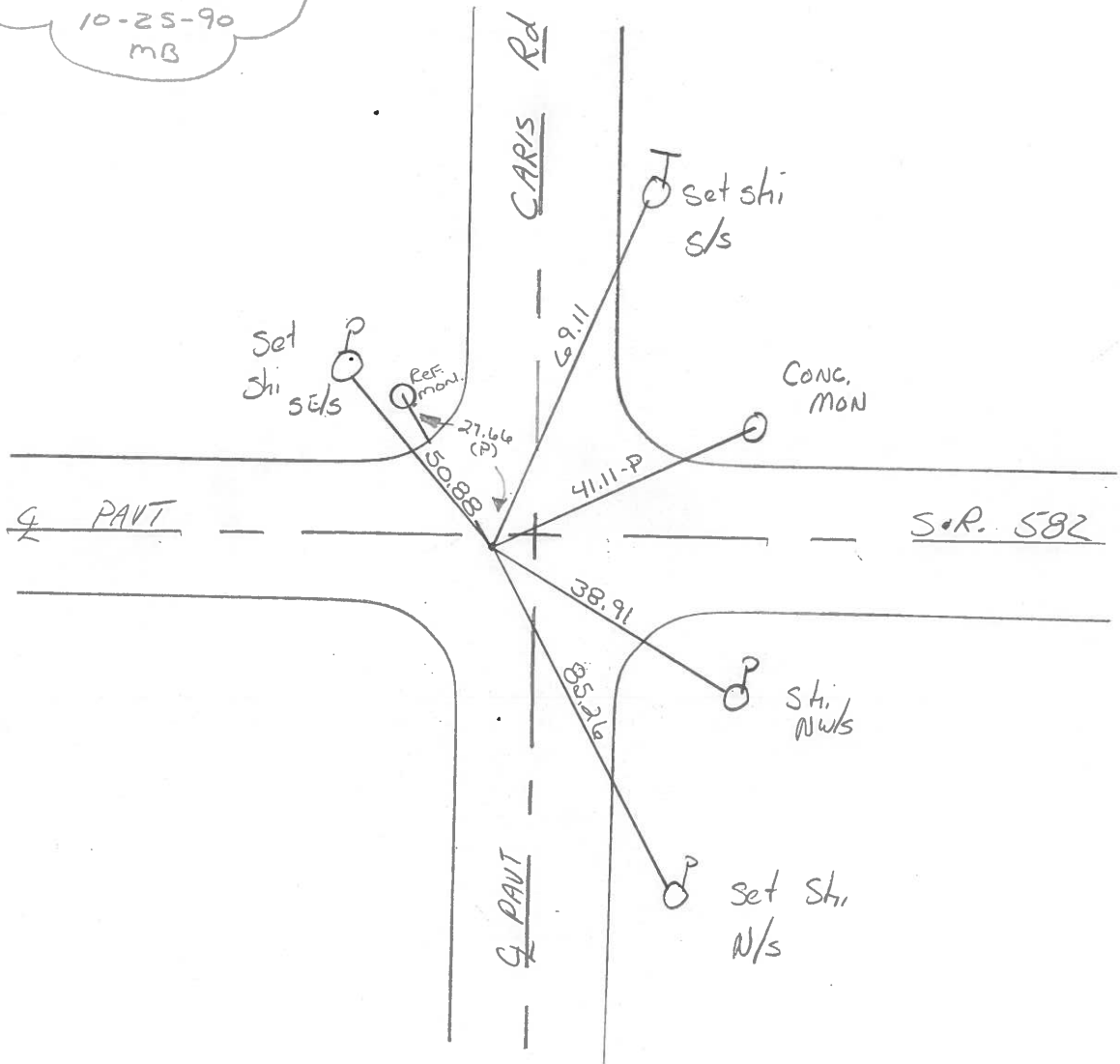
LEFT - C PAV'T. - RIGHT 1.0' / 4' W of Road to South

- TO - EDGE PAVEMENT

S.L.M. 607 + 83



Set P.K. & Washer
10-25-90
MB



County Wood S.R. 582

Township Webster

Section 19-24-25-30

T N, R E

Personnel I. Stone

P. Newser

R. Michalak

D. Curtis

Date 12 July 82

Weather Warm

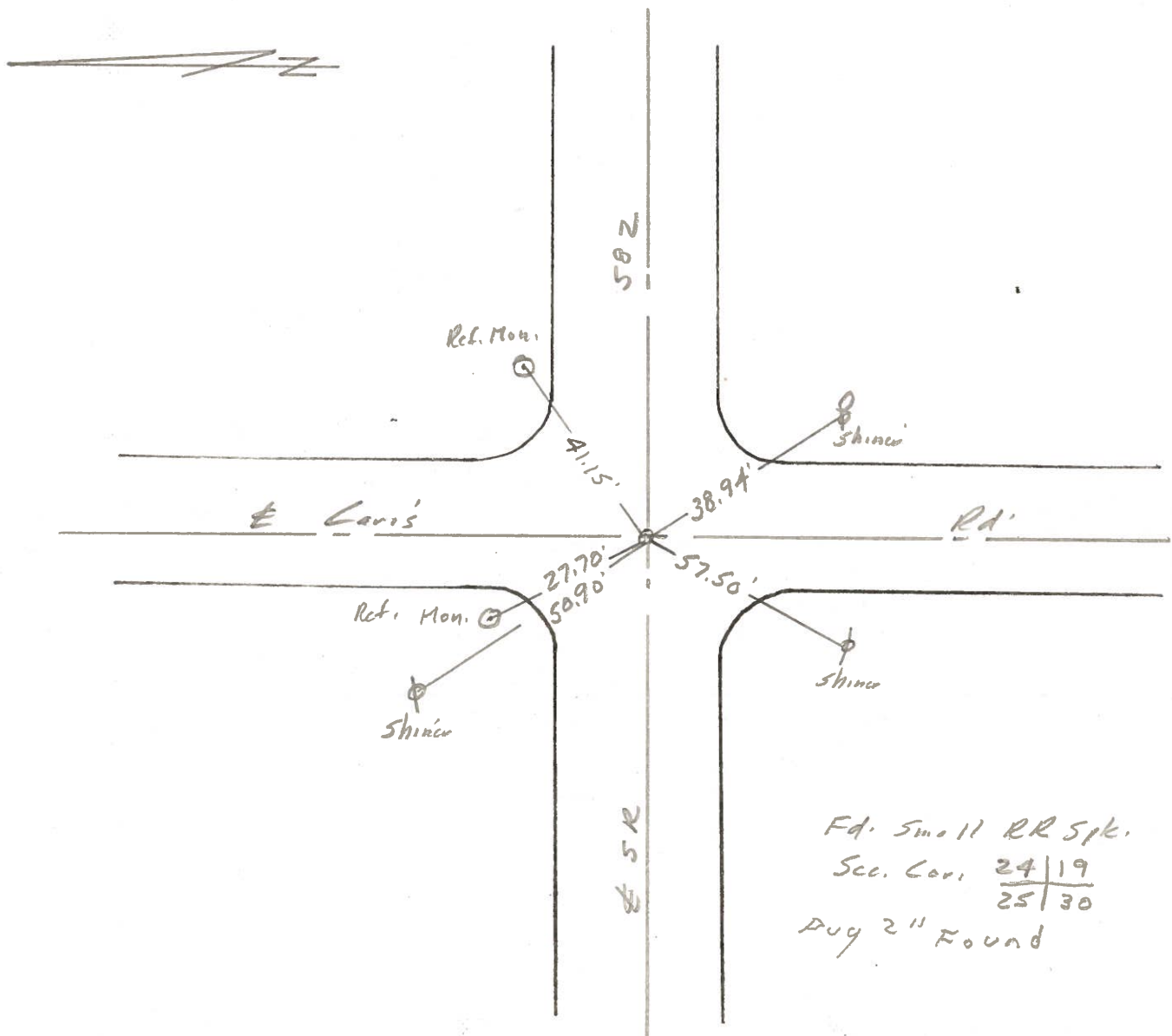
Temp. 85°

24	19
25	30



SLM Sta. 607 +89

REF. No. 33



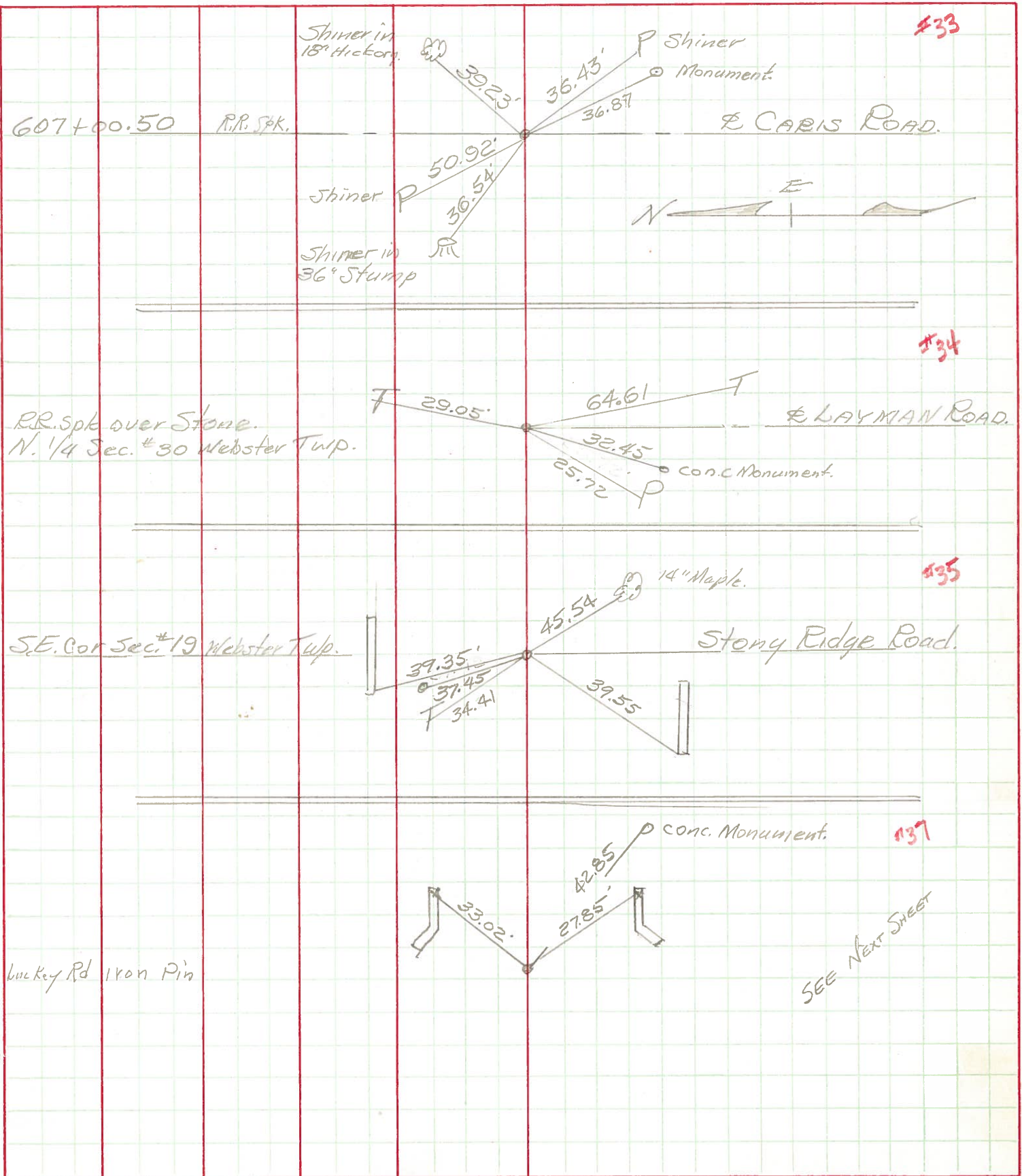
PERSONNEL TITLE PERSONNEL TITLE

COUNTY Wood. DATE April, 17, 1969

S. R. #582 WEATHER Cloudy & Windy

SEC. 199 East. TEMP. +70°

DESCRIPTION Ties to Control Points JOB NO. _____



PERSONNEL	TITLE	PERSONNEL	TITLE

COUNTY Wood DATE 12-27-57
Grorden 4-4-60
 S. R. #582 WEATHER _____
 SEC. _____ TEMP. _____

DESCRIPTION _____ LEFT _____ CENTER LINE _____ RIGHT _____ JOB NO. _____

DESCRIPTION	LEFT	CENTER LINE	RIGHT	JOB NO.
Stone wit.			Shiner in P. Pole S.S.E. 87.45'	
⑩ - Co. record (Caris ed)		OK C.L.	Shiner in 18" Hickory N.E. 39.23'	
R.R. Spk. (2" below part.)	#456	New Culvert	Shiner in 36" ^{stump} Catalpa N.W. 36.50'	
9/14/65	33		W. end of W. Bridge Girder 13.40' 13.5'	
S.E. cor. sec. 24-6-11			W. end of E. Bridge Girder 17.35' 17.6'	
Webster twp. Fd. P.K.			Conc. mon. S.E. 37.0'	
Stone 2.0' deep 9/14/65			Shiner in P.P. N.W. 50.92' 50.95'	
② - Co. record		OK OK	Shiner in P.P. S.E. 36.45'	
42.50' S. of Caris Rd. Inter.	#456-A		S. point of S.E. wing 19.0'	
	33A		S. point of S.W. wing 13.5'	
N. 1/4 post. sec. 30 Webster Twp. (Layman Rd.)		OK OK	Conc. monument N.E. 25.55'	
R.R. Spk. over Stone			Conc. monument N.W. 12.8'	
R.R. Spk. (1" below part.)			Sh. in P. Pole S.S.E. 46.45'	
9/14/65	#457		Sh. 18" Hickory N.N.E. 74.45'	
	34		Shiner Tele. Pole S.E. 64.60'	
S.E. cor. sec. 19 Webster Twp. (Stony Ridge Rd.)		OK OK	Conc. mon. S.E. 48.9'	
R.R. spike			Conc. mon. S.W. 32.45' 32.47'	
R.R. Spk. (1" below part.)			X in N.E. Cor. C.B. Top N.E. 21.40' 21.37'	
9/14/65	#458		Shiner in P. Pole S.W. 25.67'	
	35		Shiner in Tele Pole N.E. 28.75'	
			Conc. marker N.W. 37.36' ^{40'}	
			Round ditch marker S.W. 35.58' ^{60'}	
			E. point Conc. Coping on S.E. Wing S.W. 33.76' ^{45'}	
			N.W. Cor. Conc. Coping on S bulkhead S.W. 39.57' ^{59'}	
			S.W. Cor. Conc. Coping on N bulkhead N.W. 39.35'	
			E. point Conc. Coping on N.E. Wing N.W. 31.37'	
			S.E. Shiner 14" Maple 45.55' 45.61'	
			N.W. Shiner Tele. Pole 34.40'	

PERSONNEL	TITLE	PERSONNEL	TITLE
COUNTY <u>Wood</u>			
DATE <u>12-27-57</u>			
S. R. <u>#582</u>			
WEATHER <u>Snowden 4-4-60</u>			
SEC. _____			
TEMP. _____			

DESCRIPTION	LEFT	CENTER LINE	RIGHT	JOB NO.
Stone wit.			Shiner in P. Pole S.S.E. 87.45'	
(10) - Co. record (Caris Rd)			Shiner in 18" Hickory N.E. 39.22'	
	#456		Shiner in 36" Catalpa N.W. 36.50'	
	33		N. end of W. Bridge Girder 13.40' + 3.5'	
S.E. cor. sec. 24-6-11			N. end of E. Bridge Girder 17.35' + 7.6'	
Webster twp.			Conc. mon. S.E. 37.0'	
Stone 2.0' deep			Shiner in P.P. N.W. 50.92' 50.75'	
(2) - Co. record			S. point of S.E. wing 19.0'	
	#456		S. point of S.W. wing 13.5'	
	33A		Conc. monument N.E. 25.35'	
N. 1/4 post sec. 30 Webster			Conc. monument N.W. 12.8'	
Twp. (Layman Rd.)			Shiner Tele. Pole S.E. 64.60'	
E.R. spike over stone			Conc. mon. S.E. 48.9'	
	#457		Conc. mon. S.W. 32.45' 32.49'	
	34		X in N.E. Cor. C.B. Tap. N.E. 21.40' 21.37'	
S.E. cor. sec. 19 Webster			Shiner in P. Pole S.W. 25.67'	
Twp. (Stony Ridge Rd.)			Shiner in Tele. Pole N.E. 28.75'	
E.R. spike			Conc. marker N.W. 37.36'	
	#458		Round ditch marker S.W. 35.68'	
	35		E. point conc. coping on S.E. Wing S.W. 33.40'	
			N.W. Cor. conc. coping on S bulkhead S.W. 39.57'	
			S.W. Cor. conc. coping on N bulkhead N.W. 39.35'	
			E. point conc. coping on N.E. wing N.W. 31.37'	
			S.E. Shiner 14" Maple 45.61'	
			N.W. Shiner Tele. Pole 34.40'	