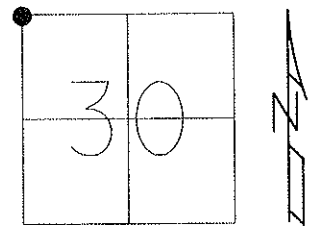


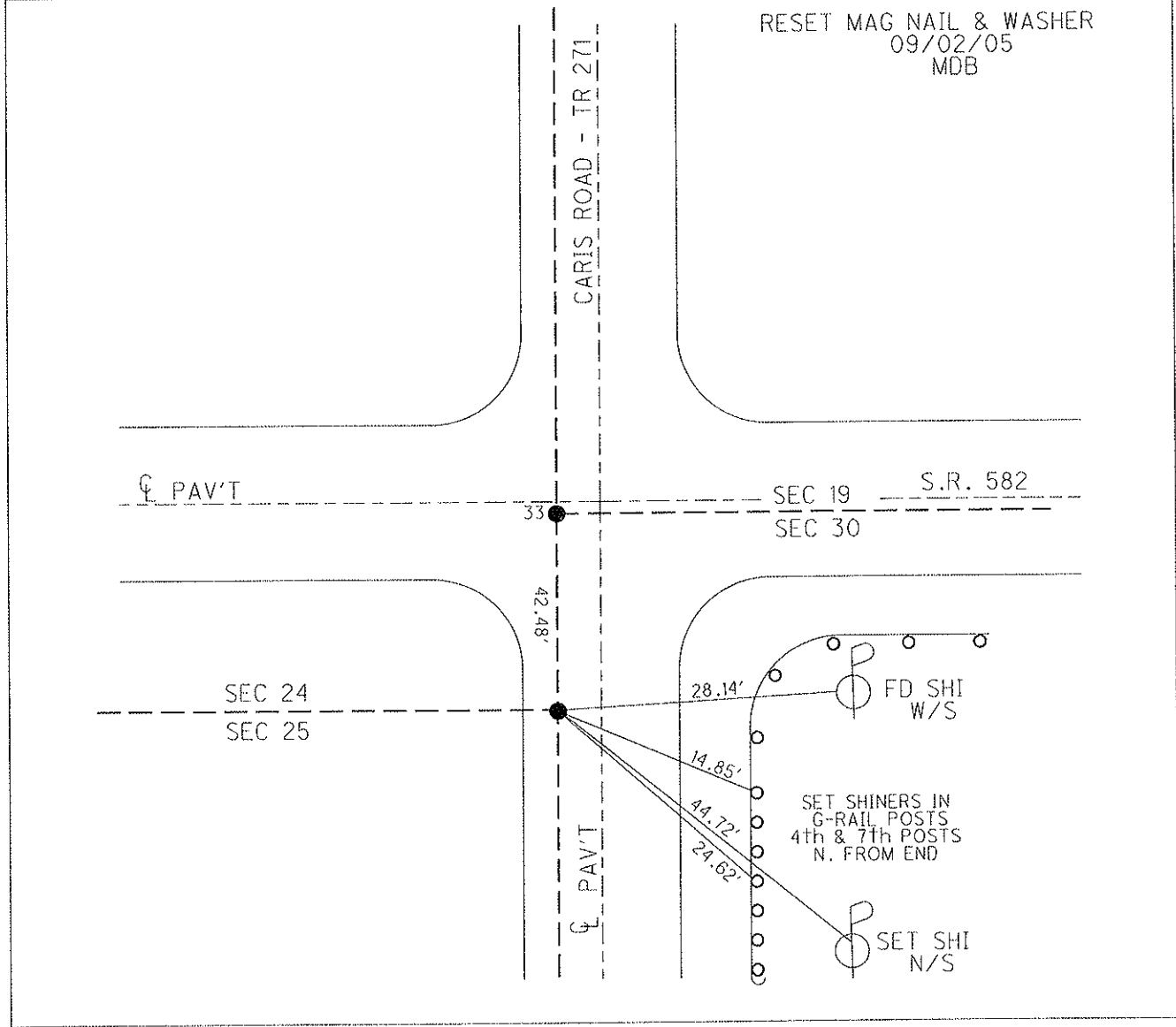
O.D.O.T. DISTRICT 2 SURVEY OFFICE

PERSONNEL	REFERENCE NO. <u>33 A</u>	SHEET <u>13</u> OF <u>20</u>
NOTES <u>BARNHESEL</u>	DATE <u>05/20/05</u>	ROUTE <u>S.R. 582</u>
H.C. <u>CANTERBURY</u>	WEATHER <u>CLOUDY</u>	COUNTY <u>WOOD</u>
R.C. <u>MIKLOVIC</u>	TEMP. <u>+60°</u>	TOWNSHIP <u>WEBSTER</u>
		SECTION <u>30</u>
		T. <u>6</u> N R. <u>11</u> E

TYPE MONUMENT BOAT SPIKE  
~~ON SURFACE~~ - BELOW 1"  
 LEFT - ☉ PAV'T - ~~RIGHT~~ 2.3' OF ☉ TR 271  
TO EDGE PAVEMENT  
 S.L.M. 607+83



GRID: NORTHING: EASTING:



PERSONNEL	TITLE	PERSONNEL	TITLE	COUNTY	DATE
				Wood	12-27-57
				S. R. #507	Grorden 4-4-60
				SEC.	WEATHER
					TEMP.

DESCRIPTION \_\_\_\_\_ LEFT \_\_\_\_\_ CENTER LINE \_\_\_\_\_ RIGHT \_\_\_\_\_ JOB NO. \_\_\_\_\_

DESCRIPTION	LEFT	CENTER LINE	RIGHT	JOB NO.
Stone wit.			Shiner in P. Pole S.E. 87.45'	
⑩ - Co. record (Caris 3d)			Shiner in 18" Hickory N.E. 39.25'	
R.R. Spk. (2" below part.)	#456		Shiner in 36" Catalpa N.W. 36.50'	
9/14/65	<b>33</b>		<del>N. end of W. Bridge Girder 13.40' 12.5'</del>	
			<del>N. end of E. Bridge Girder 17.35' 17.6'</del>	
S.E. cor. sec. 24-6-11			Conc. Mon. S.E. 37.0'	
Webster Twp. Rd. Pk.			Shiner in P.P. N.W. 50.92' 50.92'	
Stone 2.0' deep 9/14/65			Shiner in P.P. S.E. 36.45'	
② - Co. record			<del>S. point of S.E. wing 19.0'</del>	
4200' S. of Caris Ed. Station			<del>S. point of S.W. wing 13.6'</del>	
#456-A			Conc. monument N.E. 25.55'	
<b>33A</b>			<del>Conc. monument N.W. 12.8'</del>	
N. 1/4 part sec. 30 Webster Twp. (Layman Rd.)			Shi. in P. Pole S.S.E. 46.45'	
R.R. Spk. over stone			Shi. 18" Hickory N.N.E. 74.45'	
R.R. Spk. (1" below part.)			Shiner Tele. Pole S.E. 64.60'	
9/14/65 #457	<b>34</b>		<del>Conc. Mon. S.E. 43.97'</del>	
			Conc. Mon. S.W. 32.45' 32.47'	
S.E. cor. sec. 19 Webster Twp. (Stony Edge Rd.)			X in N.E. Cor. C.R. 1/2 P. N.E. 21.40' 21.37'	
R.R. spike			Shiner in P. Pole S.W. 25.67'	
R.R. Spk. (1" below part.)			Shiner in Tele. Pole N.E. 28.75'	
9/14/65 #458	<b>35</b>		Conc. marker N.W. 37.36'	
			Round ditch marker S.W. 35.58'	
			E. point conc. coping on S.E. wing S.W. 33.46'	
			N.W. cor. conc. coping on S. bulkhead S.W. 39.57'	
			S.W. cor. conc. coping on N. bulkhead N.W. 37.35'	
			<del>E. point conc. coping on the wing N.W. 31.37'</del>	
			S.E. Shiner 14" Maple 45.55' 45.61'	
			N.W. Shiner Tele. Pole 34.40'	

PERSONNEL TITLE PERSONNEL TITLE

COUNTY Wood

DATE 12-27-57

Grorden 4-4-60

S. R. #582

WEATHER

SEC.

TEMP.

DESCRIPTION

LEFT

CENTER LINE

RIGHT

JOB NO.

				Shiner in P. Pole S.S.E. 87.45'
				Shiner in 18" Hickory N.E. 39.22'
				Shiner in 36" Catalpa N.W. 36.50'
Stone wit.			<i>o.k.</i>	N. end of W. Bridge Girder 13.40' + 3.5'
(10) - Co. record (Caris Rd)				N. end of E. Bridge Girder 17.35' + 7.6'
	#456			Conc. man. S.E. 37.0'
	33			Shiner in P.P. N.W. 50.92' 50.95'
S.E. cor. sec. 24-6-11				S. point of S.E. wing 19.0
Webster twp.				S. point of S.W. wing 13.5
Stone 2.0' deep				Conc. monument N.E. 25.35
(2) - Co. record			<i>o.k.</i>	Conc. mounment N.W. 12.8'
	#456			
	33A			Shiner Tele. Pole S.E. 64.60'
N. 1/4 post sec. 30 Webster				Conc. man. S.E. 48.9
Twp. (Layman Rd.)				Conc. man. S.W. 32.45 32.49
E.P. spike over stone			<i>o.k.</i>	X in N.E. Cor. C.B. Top N.E. 21.40 21.37
	#457	34		Shiner in P. Pole S.W. 25.67
				Shiner in Tele. Pole N.E. 28.75
S.E. cor. sec. 19 Webster				Conc. marker N.W. 37.36
Twp. (Stony Ridge Rd.)				Round ditch marker S.W. 35.68
E.P. spike			<i>o.k.</i>	E. point Conc. Coping on S.E. Wing
		35		S.W. 33.40
	#458			N.W. Cor. Conc. Coping on S
				bulkhead S.W. 39.57
				S.W. Cor. Conc. Coping on N
				bulkhead N.W. 39.35
				E. point Conc. Coping on N.E
				wing N.W. 31.37
				S.E. Shiner 14" Maple 45.61'
				N.W. Shiner Tele. Pole 34.40