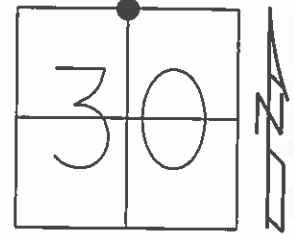


O.D.O.T. DISTRICT 2 SURVEY OFFICE (USE ONLY)

PERSONNEL \_\_\_\_\_ REFERENCE NO. 34 SHEET 14 OF 20  
 NOTES O'DONNELL DATE 06-16-2015 ROUTE SR 582  
 H.C. O'DONNELL WEATHER CLOUDY COUNTY WOOD  
 R.C. RHOADES TEMP. 71° TOWNSHIP WEBSTER  
 \_\_\_\_\_ SECTION 30  
 \_\_\_\_\_ T 6 N R 11 E

TYPE MONUMENT PK NAIL  
 ON SURFACE - ~~BELOW~~ ON \_\_\_\_\_  
~~LEFT~~ - ☉ PAV'T - RIGHT 0.8'  
10.3' TO LT EDGE PAVEMENT  
 S.L.M. 636+76.8

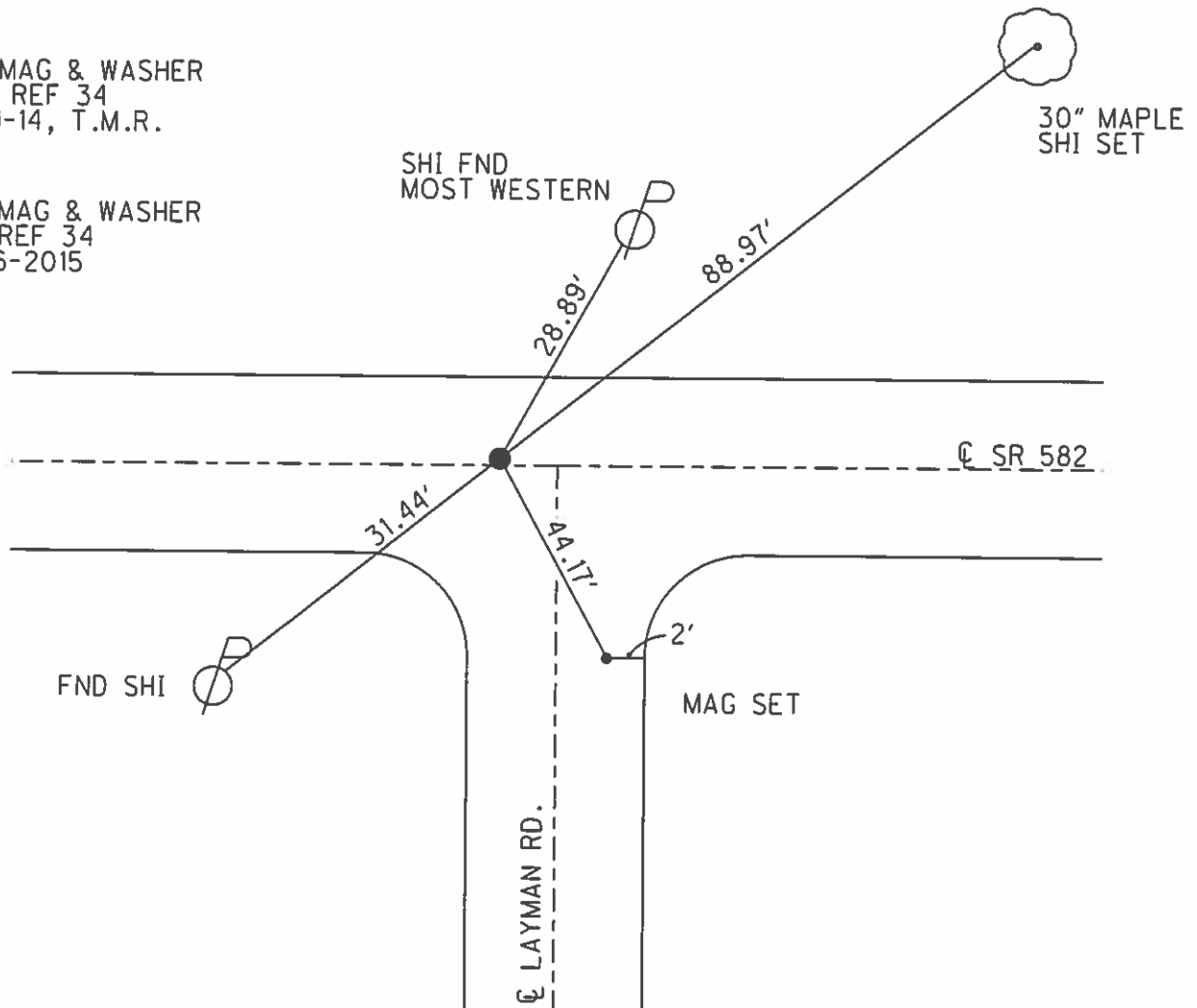


Grid: Northing: 653873.549 Easting: 1690446.417

RESET MAG & WASHER  
 09-02-2005 M.D.B.

FND MAG & WASHER  
 GPS, REF 34  
 03-11-14, T.M.R.

FND MAG & WASHER  
 GPS REF 34  
 06-16-2015



O.D.O.T. DISTRICT 2 SURVEY OFFICE

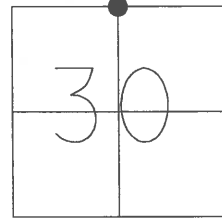
PERSONNEL

NOTES BARNHISEL  
 H.C. CANTERBURY  
 R.C. MIKLOVIC  
 \_\_\_\_\_  
 \_\_\_\_\_

REFERENCE NO. 34  
 DATE 05/20/05  
 WEATHER CLOUDY  
 TEMP. +60°

SHEET 14 OF 20  
 ROUTE S.R. 582  
 COUNTY WOOD  
 TOWNSHIP WEBSTER  
 SECTION 30  
 T 6 N R 11 E

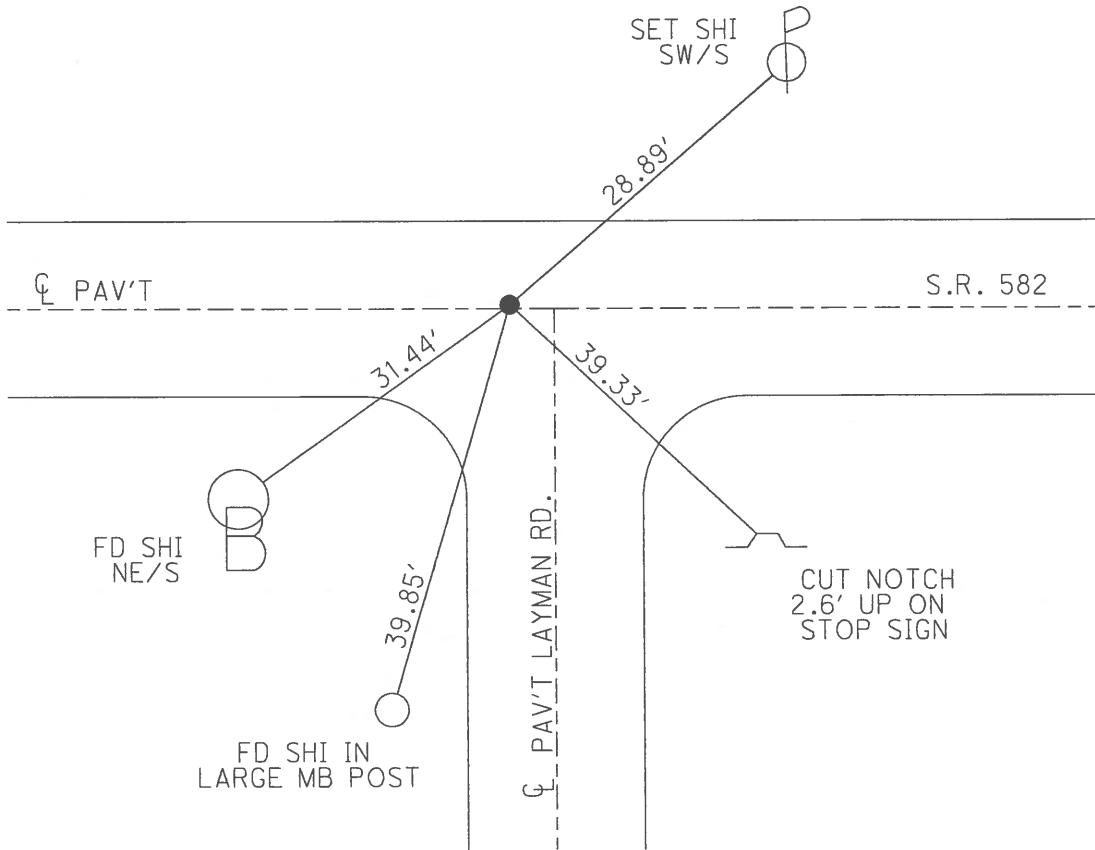
TYPE MONUMENT PK NAIL  
 ON SURFACE - ~~BELOW~~ YES  
~~LEFT~~ - Q PAV'T - RIGHT 0.8'  
10.3' TO LT. EDGE PAVEMENT  
 S.L.M. 637+17



GRID: NORTHING:

EASTING:

RESET MAG NAIL & WASHER  
 09/02/05  
 MDB



# O.D.O.T. DISTRICT 2 SURVEY OFFICE

PERSONNEL

REFERENCE NO. 34

SHEET \_\_\_\_\_ OF \_\_\_\_\_

NOTES LOGHARKE

H.C. HOFFMAN

DATE 7-12-90

ROUTE S.R

R.C. STEINHAUSER

WEATHER CLOUDY

COUNTY Wood

BARNHISEL

TEMP. +70°

TOWNSHIP Webster

SECTION 30

T & N R I & E

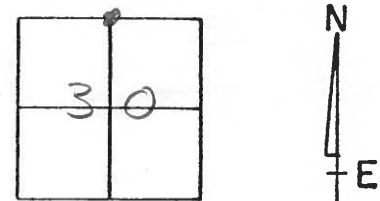
TYPE MONUMENT IRON PIN

~~ON SURFACE~~ - BELOW 1 1/2"

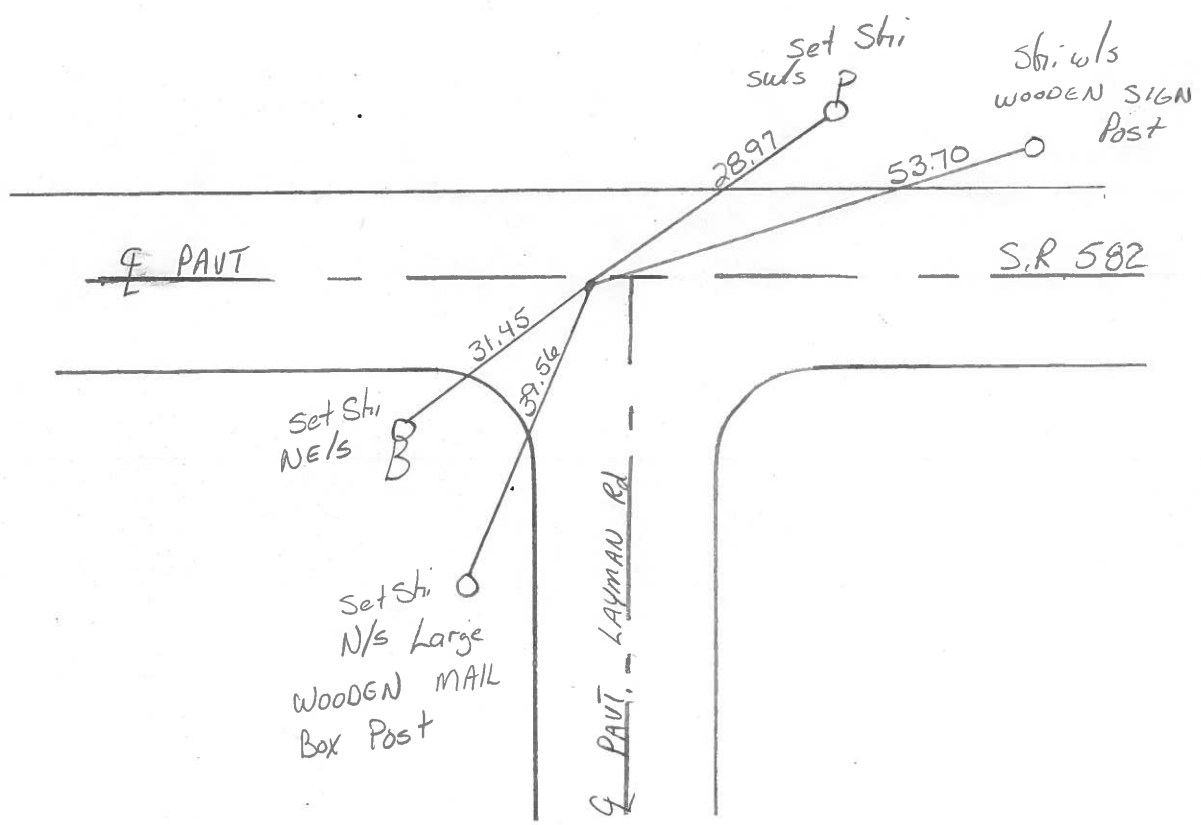
~~LEFT - C~~ PAVT. - RIGHT 0.6'

10.9 TO Lt EDGE PAVEMENT

S.L.M. 637 + 17



Set P.K. / Washer  
10-25-90  
mB



County Wood S.R. 582

Date 12 July 83

Township Webster

Weather Warm

Section 19

Temp. 85°

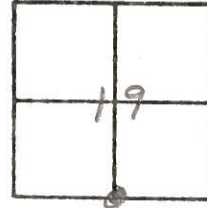
T\_N, R\_E

Personnel I. Stone

P. Newser

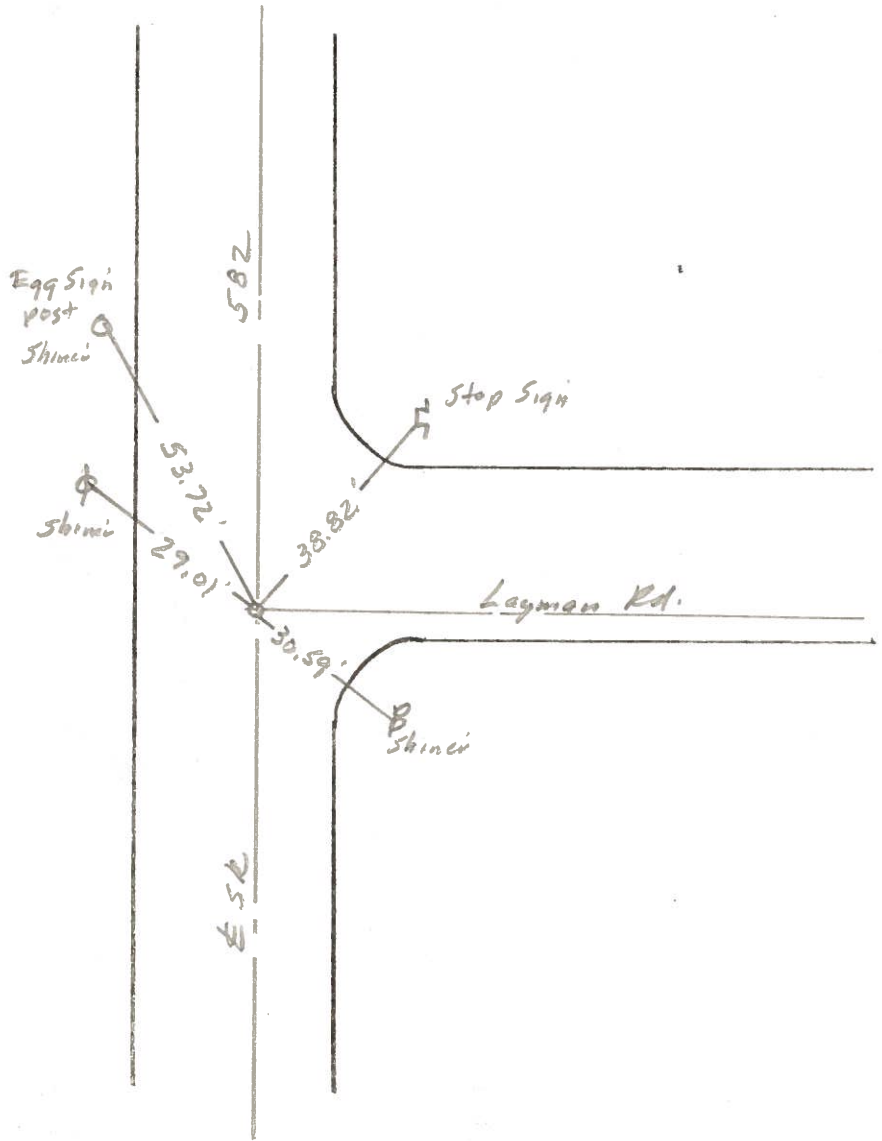
R. Michalak

D. Curtis



564 Sta. 637 +23

REF. NO. 34



Fd. RR Spk. To surface  
5 1/4 Cor. Sec. 19  
11.2' to N edge put.  
1249 24 Found

PERSONNEL TITLE PERSONNEL TITLE

COUNTY Wood.

DATE April 17, 1969

S. R. #582

WEATHER Cloudy & Windy

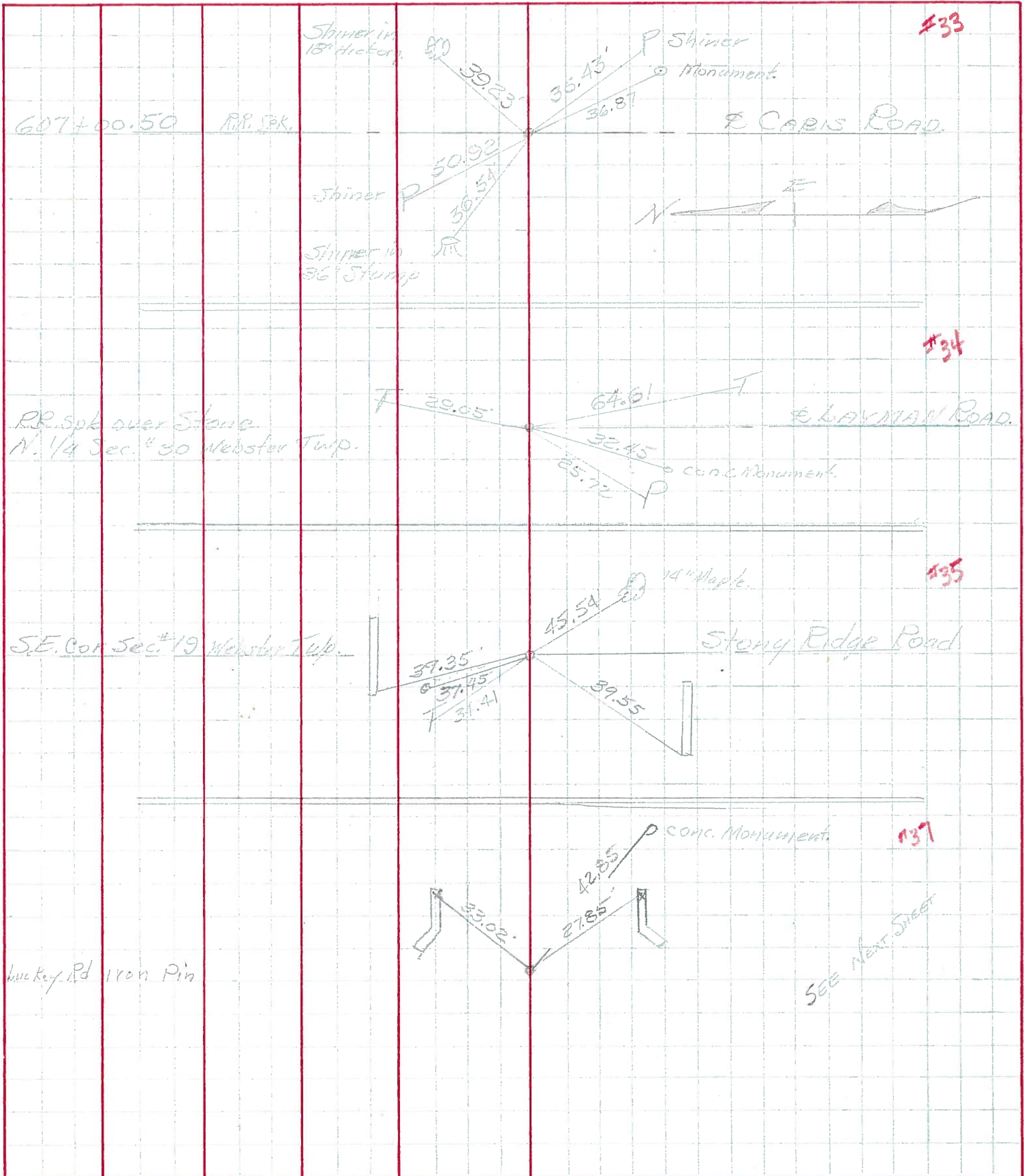
SEC. 199 East

TEMP. +70°

DESCRIPTION Ties to Control Points

JOB NO. \_\_\_\_\_

LEFT CENTER LINE RIGHT



PERSONNEL	TITLE	PERSONNEL	TITLE

COUNTY Wood DATE 12-27-57  
Grorden 4-4-60  
 S. R. #582 WEATHER \_\_\_\_\_  
 SEC. \_\_\_\_\_ TEMP. \_\_\_\_\_

DESCRIPTION \_\_\_\_\_ LEFT \_\_\_\_\_ CENTER LINE \_\_\_\_\_ RIGHT \_\_\_\_\_ JOB NO. \_\_\_\_\_

DESCRIPTION	LEFT	CENTER LINE	RIGHT	JOB NO.
Stone wit.			Shiner in P. Pole S.S.E. 87.45'	
(10) Co. record (Caris ed)		OK C.L.	Shiner in 18" Hickory N.E. 39.22'	
R.R. Spk. (2" below part.)	#456	New Culvert	Shiner in 36" Catalpa N.W. 36.50'	
9/14/65	<b>33</b>		<del>W. end of W. Bridge Girder 13.46'</del>	
S.E. cor. sec. 24-6-11			<del>W. end of E. Bridge Girder 17.35'</del>	
Webster Twp. Rd. Rk.			3 in. Mon. S.E. 37.0'	
Stone 2.0' deep 9/14/65			Shiner in P.P. N.W. 50.92'	
(2) Co. record	#456-A		Shiner in P.P. S.E. 36.45'	
42.50' S. of Caris Rd. Inter.	<b>33A</b>		<del>S. point of S.E. wing 19.0'</del>	
			<del>S. point of S.W. wing 13.5'</del>	
N. 1/4 post cor. 30 Webster Twp.	(Layman Rd.)	OK C.L.	Conc. monument N.E. 25.35'	
R.R. Spk. over Stone			<del>Conc. monument N.W. 12.8'</del>	
R.R. Spk. (1" below part.)	#457		Sh. in P. Pole S.S.E. 46.95'	
9/14/65	<b>34</b>		Sh. 18" Hickory N.N.E. 74.45'	
S.E. cor. sec 19 Webster Twp.	(Stony Edge rd.)		Shiner Tele. Pole S.E. 64.60'	
R.R. spike			<del>3 in. Mon. S.E. 48.9'</del>	
R.R. Spk. (1" below part.)	#458		Corner Mon. S.W. 32.45'	
9/14/65	<b>35</b>		X in N.E. Cor. C.B. Top N.E. 21.40'	
			Shiner in P. Pole S.W. 25.67'	
			Shiner in Tele Pole N.E. 28.75'	
			3 in. marker N.W. 37.26'	
			Round ditch marker S.W. 35.60'	
			E. point conc. coping on S.E. wing S.W. 33.40'	
			N.W. cor. conc. coping on S bulkhead S.W. 39.57'	
			S.W. cor. conc. coping on N bulkhead N.W. 39.35'	
			<del>E. point conc. coping on N.E. wing N.W. 31.34'</del>	
			S.E. Shiner 14" Maple 45.55'	
			N.W. Shiner Tele. Pole 34.40'	



PERSONNEL	TITLE	PERSONNEL	TITLE

COUNTY Wood DATE 12-27-57  
Sorden 4-4-60  
 S. R. #582 WEATHER \_\_\_\_\_  
 SEC. \_\_\_\_\_ TEMP. \_\_\_\_\_

DESCRIPTION	LEFT	CENTER LINE	RIGHT	JOB NO.
Stone wit.			Shiner in P. Pole S.S.E. 87.45'	
(10) - Co. record (Caris Rd)			Shiner in 18" Hickory N.E. 39.22'	
	#456		Shiner in 36" Catalpa N.W. 36.50'	
	33		N. end of W. Bridge Girder 13.40' + 3.5'	
S.E. cor. sec. 24-6-11			N. end of E. Bridge Girder 17.35' + 7.6'	
Webster twp.			Conc. man. S.E. 37.0'	
Stone 2.0' deep			Shiner in P.P. N.W. 50.92' + 50.95'	
(2) - Co. record			S. point of S.E. wing 19.0	
	#456		S. point of S.W. wing 13.5	
	33A		Conc. monument N.E. 25.35	
N. 1/4 post sec. 30 Webster			Conc. monument N.W. 12.8'	
Twp. (Layman Rd.)			Shiner Tele. Pole S.E. 64.60'	
E.E. spike over stone			Conc. man. S.E. 48.9	
	#457		Conc. man. S.W. 32.45' + 32.49'	
	34		X in N.E. Cor. C.B. Top N.E. 21.40' + 21.39'	
S.E. cor. sec. 19 Webster			Shiner in P. Pole S.W. 25.67'	
Twp. (Stony Ridge Rd.)			Shiner in Tele. Pole N.E. 28.75'	
E.E. spike			Conc. marker N.W. 37.36'	
	#458		Round ditch marker S.W. 35.68'	
	35		E. point Conc. Coping on S.E. Wing S.W. 33.40'	
			N.W. Cor. Conc. Coping on S bulkhead S.W. 39.57'	
			S.W. Cor. Conc. Coping on N bulkhead N.W. 39.35'	
			E. point Conc. Coping on N.E. Wing N.W. 31.37'	
			S.E. Shiner 14" Maple 45.61'	
			N.W. Shiner Tele. Pole 34.40'	