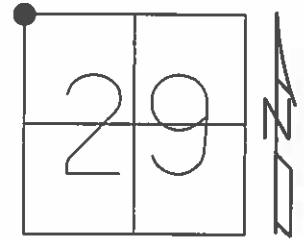


O.D.O.T. DISTRICT 2 SURVEY OFFICE (USE ONLY)

PERSONNEL _____ REFERENCE NO. 35 SHEET 15 OF 20
 NOTES O'DONNELL DATE 06-16-2015 ROUTE SR 582
 H.C. O'DONNELL WEATHER CLOUDY COUNTY WOOD
 R.C. RHOADES TEMP. 71° TOWNSHIP WEBSTER
 _____ SECTION 29
 _____ T 6 N R 11 E

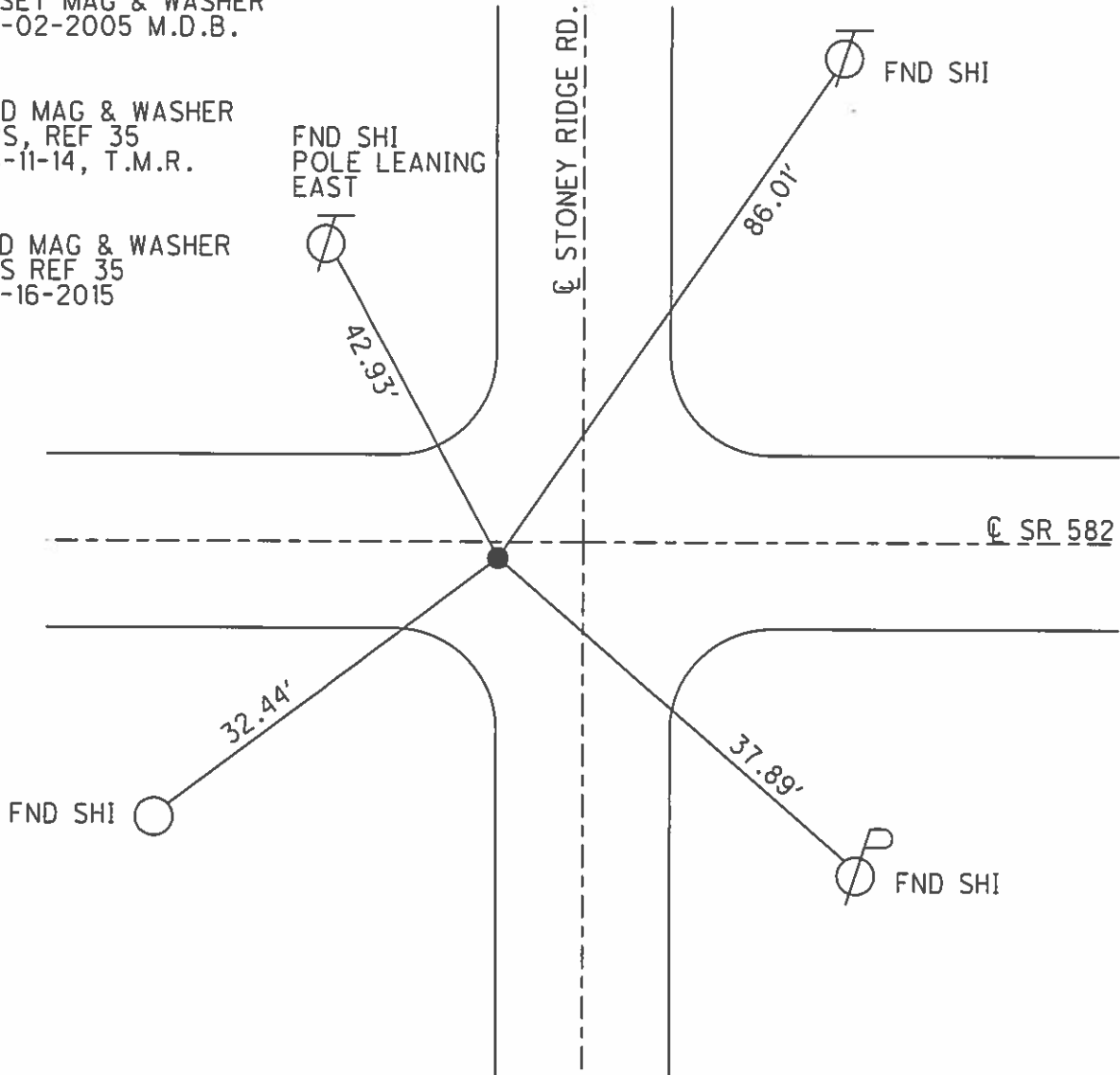
TYPE MONUMENT IPIN
~~ON SURFACE~~ - BELOW 2.5"
~~LEFT~~ - ℄ PAV'T - RIGHT 2.9', 9.0' W. OF ℄ S.
- TO - EDGE PAVEMENT
 S.L.M. 663+35.82
 Grid: Northing: 653854.021 Easting: 1691169.064



RESET MAG & WASHER
 09-02-2005 M.D.B.

FND MAG & WASHER
 GPS, REF 35
 03-11-14, T.M.R.

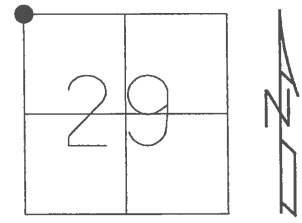
FND MAG & WASHER
 GPS REF 35
 06-16-2015



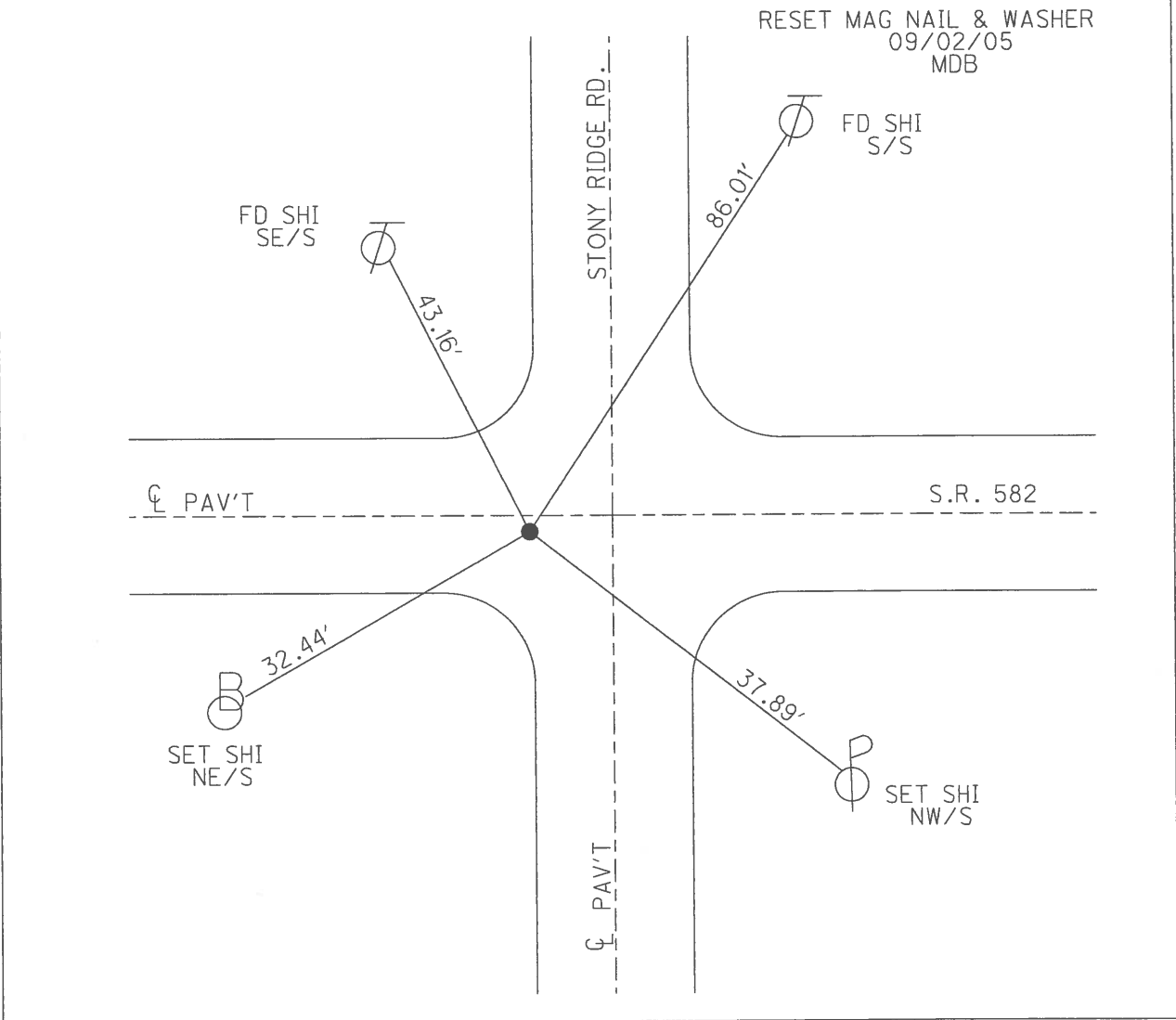
O.D.O.T. DISTRICT 2 SURVEY OFFICE

PERSONNEL	REFERENCE NO. <u>35</u>	SHEET <u>15</u> OF <u>20</u>
NOTES <u>BARNHESEL</u>	DATE <u>05/20/05</u>	ROUTE <u>S.R. 582</u>
H.C. <u>CANTERBURY</u>	WEATHER <u>CLOUDY</u>	COUNTY <u>WOOD</u>
R.C. <u>MIKLOVIC</u>	TEMP. <u>+60°</u>	TOWNSHIP <u>WEBSTER</u>
		SECTION <u>29</u>
		T <u>6</u> N R <u>11</u> E

TYPE MONUMENT IRON PIN
~~ON SURFACE~~ - BELOW 2.5"
~~LEFT~~ - CL PAV'T - RIGHT 2.9'
TO EDGE PAVEMENT
 S.L.M. 663+80, 9.0' W. OF CL SOUTH



GRID: NORTHING: _____ EASTING: _____



O.D.O.T. DISTRICT 2 SURVEY OFFICE

PERSONNEL

REFERENCE NO. 35

SHEET _____ OF _____

NOTES LOCHARKE

H.C. HOFFMAN

DATE 7-12-90

ROUTE S.R. 582

R.C. STEINHAUSER

WEATHER CLOUDY/WINDY

COUNTY WOOD

BARNHISEL

TEMP. +70°

TOWNSHIP Webster

SECTION 29

T. 6 N R. 12 E

TYPE MONUMENT IRON PIN

ON SURFACE - BELOW 1 1/2"

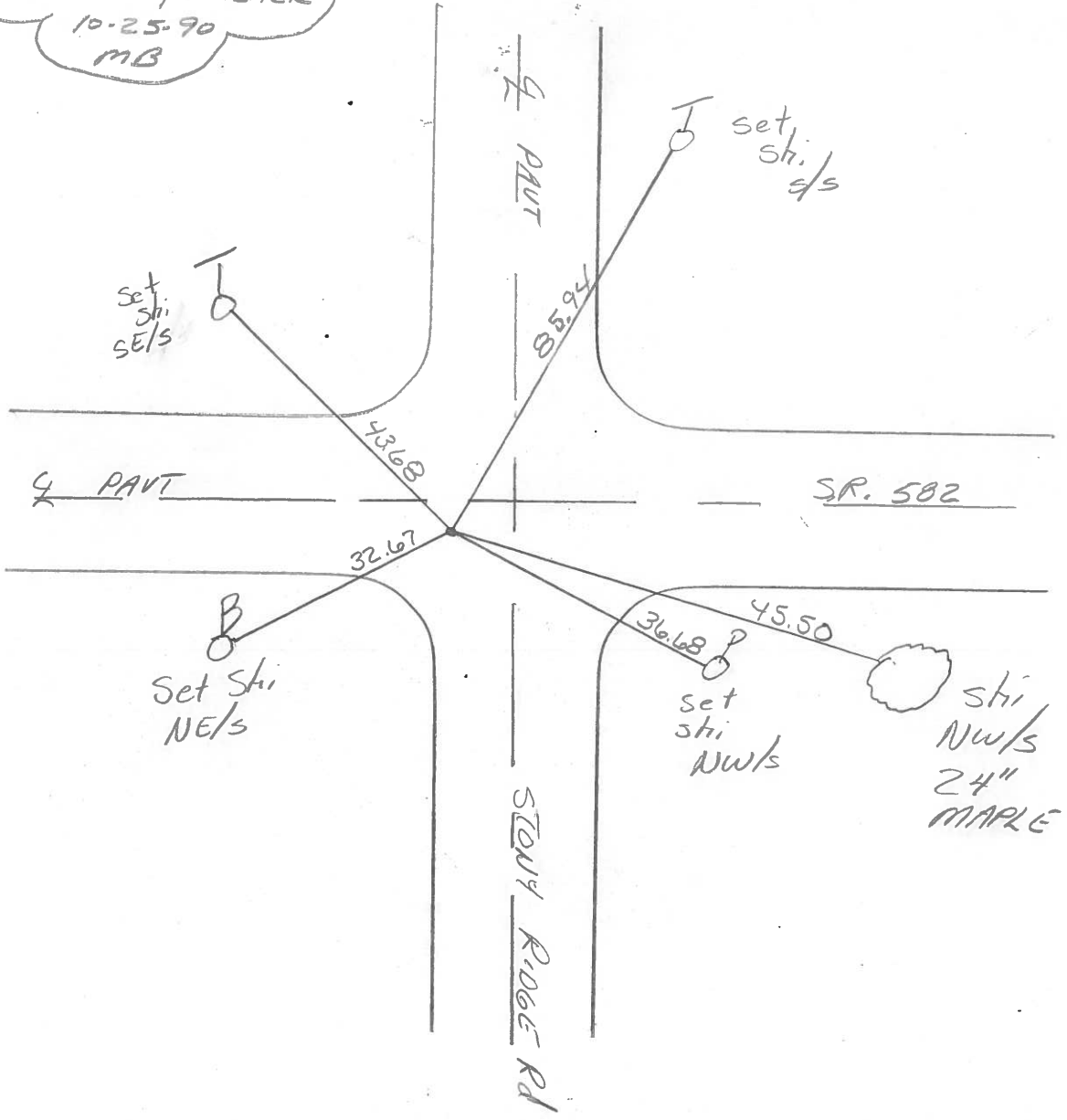
~~LEFT~~ - PAV'T. - RIGHT 2.9 / 9.0 W of E Rd

- TO - EDGE PAVEMENT

S.L.M. 663 +80



Set P.K. / WASHER
10-25-90
MB



County Wood S.R. 582

Date 12 July 83

Township Webster

Weather Warm

Section 19-20-29-30

Temp. 85°

T N, R E

Personnel I. Stone

P. Neusca

R. Michalak

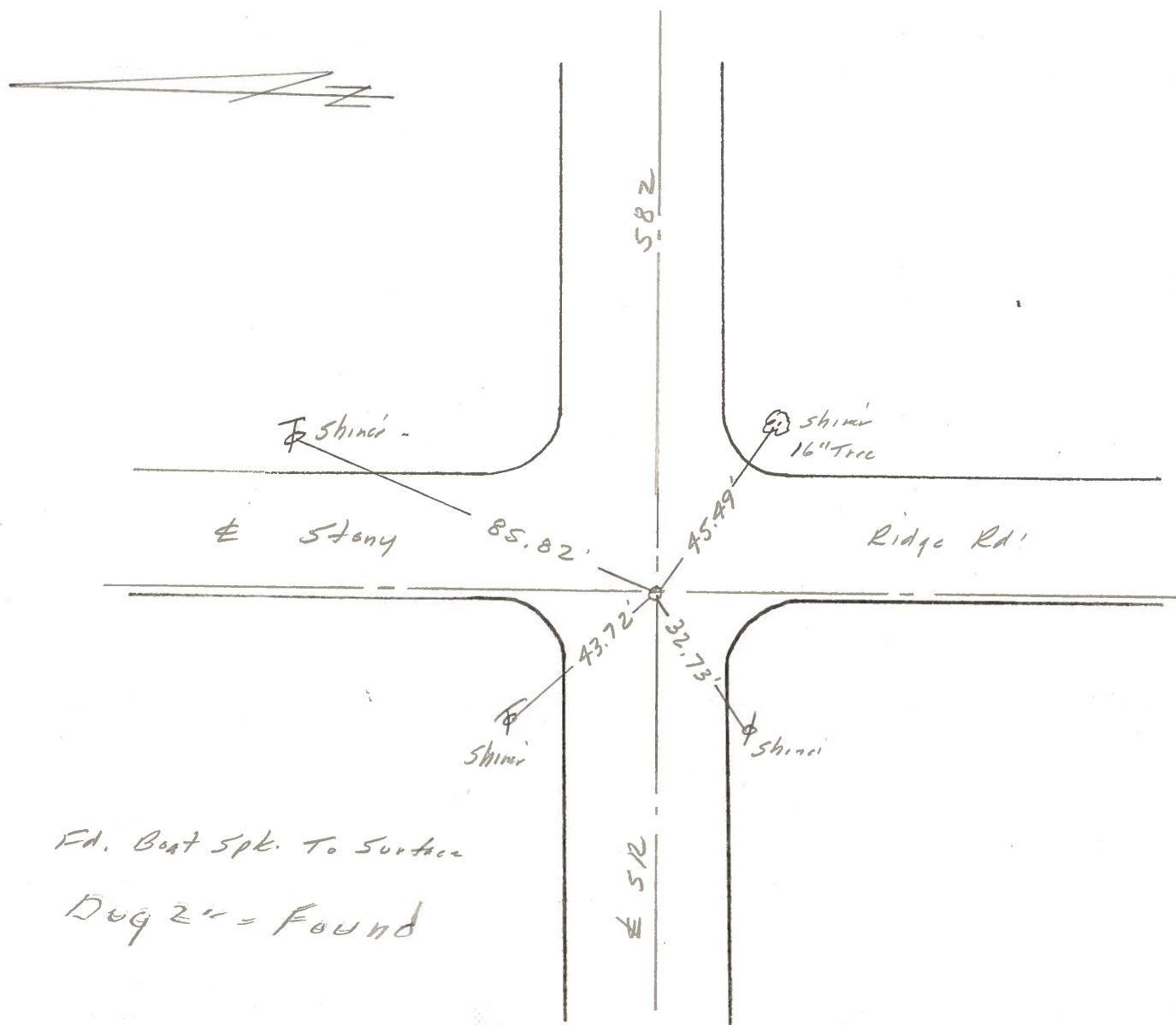
D. Curtis

19	20
30	29



SLM Sta. 663+83

REF. NO. 35



Fd. Boat Spk. To Surface

Dug 2" = Found

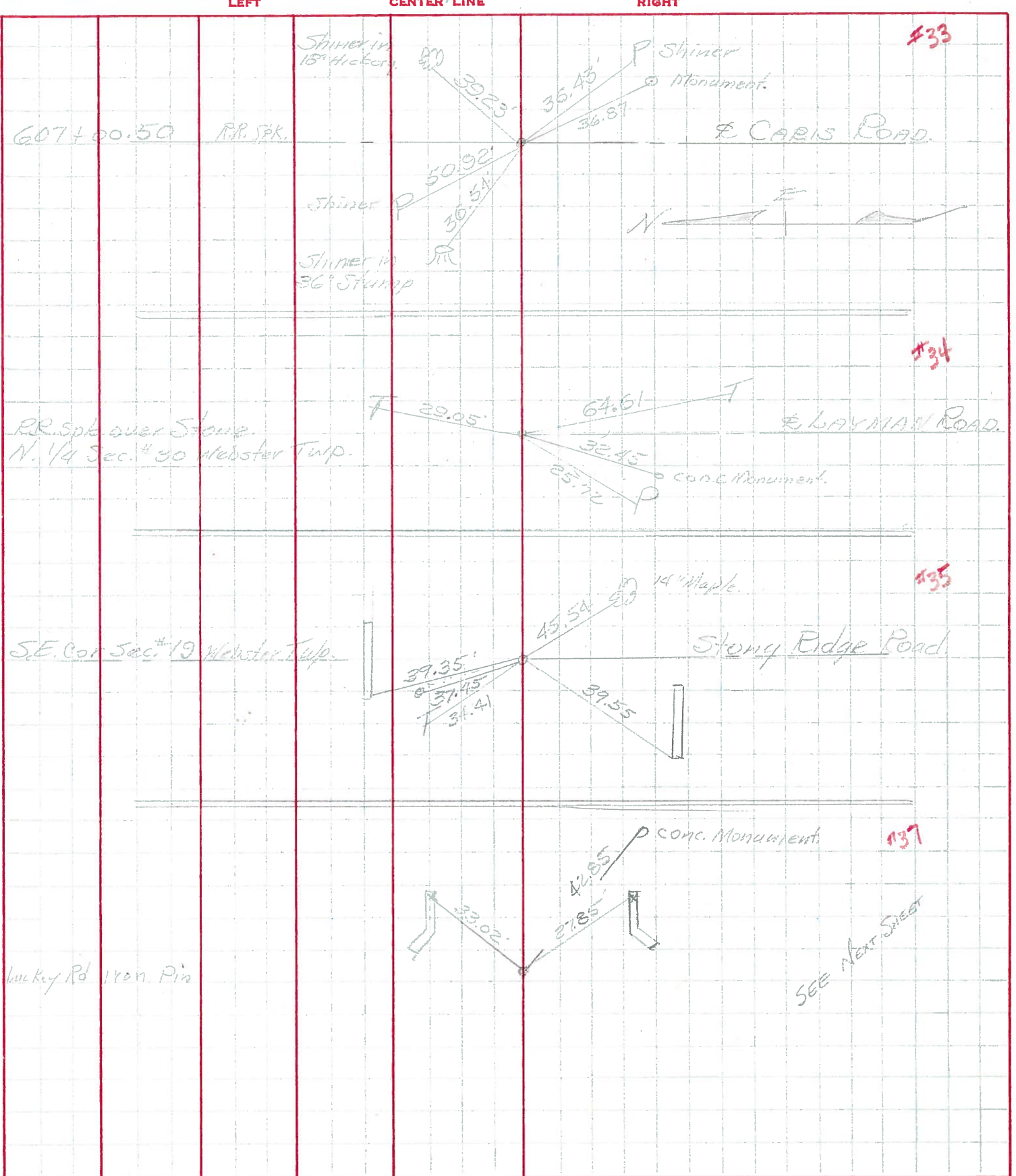
PERSONNEL TITLE PERSONNEL TITLE

COUNTY Wood. DATE April, 17, 1969

S. R. #582 WEATHER Cloudy & Windy

SEC. 199 East TEMP. +70°

DESCRIPTION Ties to Control points JOB NO. _____



PERSONNEL	TITLE	PERSONNEL	TITLE

COUNTY	<u>Wood</u>	DATE	<u>12-27-57</u>
S. R.	<u>#582</u>	WEATHER	<u>Srarden 4-4-60</u>
SEC.		TEMP.	

DESCRIPTION	LEFT	CENTER LINE	RIGHT	JOB NO.
-------------	------	-------------	-------	---------

Stone wit.
 (10) Co. record (Caris ed)
 R.R. Spk. (2" below part.) #456
 9/14/65 **33**

S.E. cor. sec. 24-6-11
 Webster Twp. Fd. R.R.
 Stone 2.0' deep 9/14/65
 (2) Co. record
 4250' S. of Caris Ed. Inter.
 #456-A **33A**

N. 1/4 post sec. 30 Webster
 Twp. (Layman Rd.)
 R.R. Spk. over Conc
 R.R. Spk. (1" below part.)
 9/14/65 #457 **34**

S.E. cor. sec. 19 Webster
 Twp. (Stony Edge Rd.)
 R.R. spike
 R.R. Spk. (1" below part.)
 9/14/65 #458 **35**

OK
C.L.

New
Cultured

OK
C.L.

OK
C.L.

OK
C.L.

Shiner in P. Pole S.S.E.	87.45'
Shiner in 18" Hickory N.E.	39.23'
Shiner in 36" Catalpa ^{Spring} N.W.	36.50'
W. end of W. Bridge Girder	13.40' 13.5'
W. end of E. Bridge Girder	17.35' 17.6'
Cons. man. S.E.	37.0'
Shiner in P.P. N.W.	50.92' 50.95'
Shiner in P.P. S.E.	36.45'
S. point of S.E. wing	19.0'
S. point of S.W. wing	13.5'
Conc. monument N.E.	25.35'
Conc. monument N.W.	12.8'
Sh. in P. Pole S.S.E.	46.45'
Sh. 18" Hickory N.N.E.	74.45'
Shiner Tele. Pole S.E.	64.60'
Cons. man. S.E.	42.49'
Cons. man. S.W.	32.45' 32.47'
X in N.E. Cor. C.B. Top N.E.	21.40' 21.37'
Shiner in P. Pole S.W.	25.67'
Shiner in Tele Pole N.E.	28.75'
Cons. marker N.W.	37.36' ^{40'}
Round ditch marker S.W.	35.58' ^{60'}
E. point conc. coping on S.E. wing	33.46' ^{45'}
N.W. Cor. conc. coping on S. bulkhead S.W.	39.57' ^{58'}
S.W. Cor. Conc. coping on N. bulkhead N.W.	39.35'
E. point conc. coping on N.E. wing N.W.	31.37'
S.E. Shiner 14" Maple	45.55' 45.61'
N.W. Shiner Tele. Pole	34.40'

PERSONNEL	TITLE	PERSONNEL	TITLE

COUNTY Wood DATE 12-27-57
Grorden 4-4-60
 S. R. #582 WEATHER _____
 SEC. _____ TEMP. _____

DESCRIPTION _____ LEFT _____ CENTER LINE _____ RIGHT _____ JOB NO. _____

Stone wit.				Shiner in P. Pole S.S.E. 87.45'
⑩ - Co. record (Caris Rd)	#456			Shiner in 18" Hickory N.E. 39.22'
	33			Shiner in 36" Catalpa N.W. 36.50'
S.E. cor. sec. 24-6-11				N. end of W. Bridge Girder 13.40' + 3.5'
Webster twp.				N. end of E. Bridge Girder 17.35' + 7.6'
Stone 2.0' deep				Conc. man. S.E. 37.0'
② - Co. record	#456			Shiner in P.P. N.W. 50.92' + 50.95'
	33A			S. point of S.E. wing 19.0
N. 1/4 post sec. 30 Webster				S. point of S.W. wing 13.5
Twp. (Layman Rd.)				Conc. monument N.E. 25.35
E.R. spike over stone				Conc. monument N.W. 12.8
	#457			Shiner Tele. Pole S.E. 64.60
	34			Conc. mon. S.E. 48.9
S.E. cor. sec. 19 Webster				Conc. mon. S.W. 32.45' + 32.44'
Twp. (Stony Ridge Rd.)				X in N.E. Cor. C.B. Tap. N.E. 21.40' + 21.37'
E.R. spike				Shiner in P. Pole S.W. 25.67
	#458			Shiner in Tele. Pole N.E. 28.75
	35			Conc. marker N.W. 37.36
				Round ditch marker S.W. 35.68
				E. point conc. coping on S.E. wing S.W. 33.40
				N.W. cor. conc. coping on S bulkhead S.W. 39.57
				S.W. cor. conc. coping on N bulkhead N.W. 39.35
				E. point conc. coping on N.E. wing N.W. 31.37
				S.E. Shiner 14" Maple 45.61'
				N.W. Shiner Tele. Pole 34.40