

O.D.O.T. DISTRICT 2 SURVEY OFFICE

PERSONNEL

REFERENCE NO. 36 A

SHEET 17 OF 20

NOTES BARNHISEL

DATE 05/23/05

ROUTE S.R. 582

H.C. CANTERBURY

WEATHER CLOUDY

COUNTY WOOD

R.C. MIKLOVIC

TEMP. +65°

TOWNSHIP WEBSTER

SECTION 29

T 6 N R 12 E

TYPE MONUMENT PK & WASHER

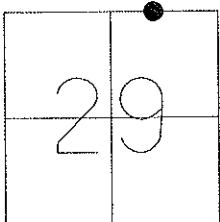
ON SURFACE - ~~BELOW~~ YES

~~LEFT~~ - Q PAV'T - RIGHT 5.7'

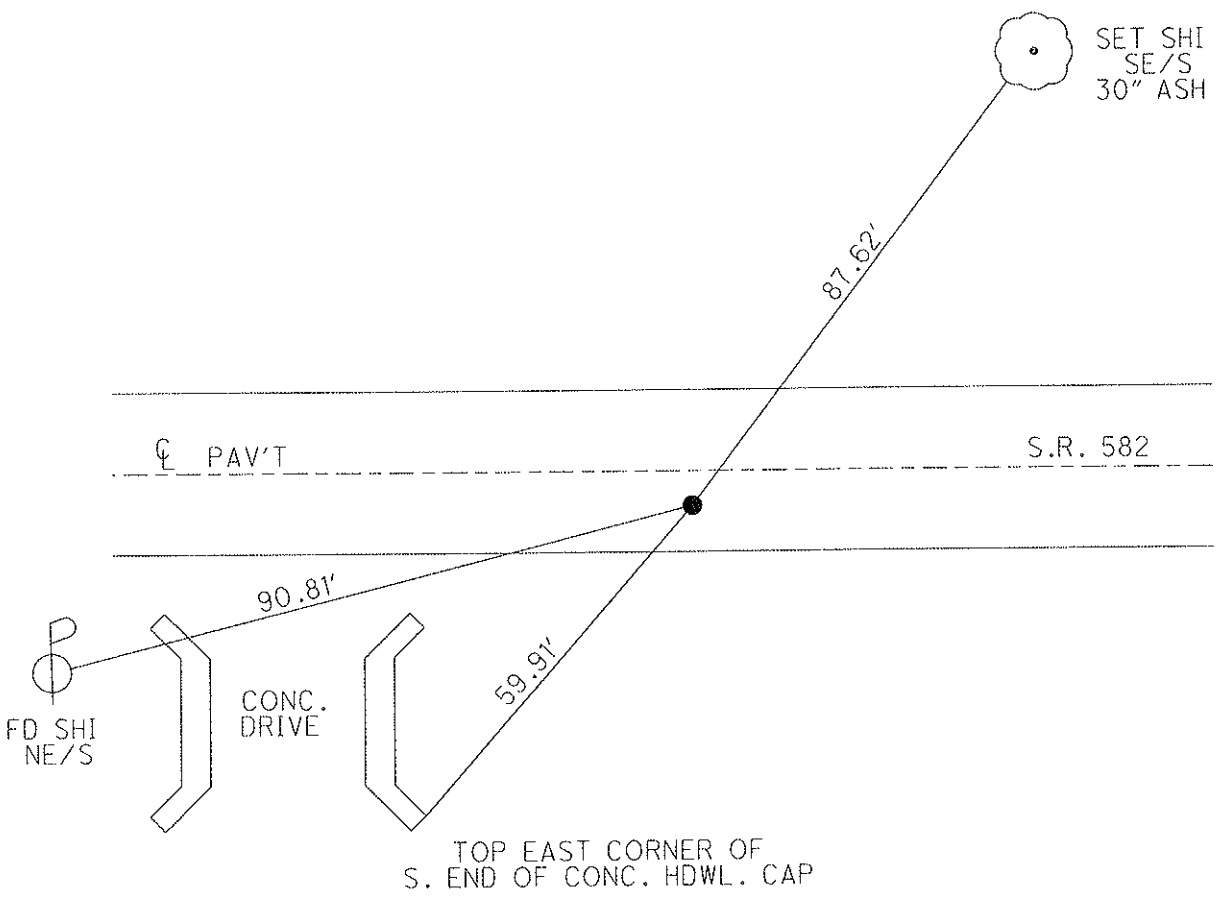
3.8' TO RT. EDGE PAVEMENT

S.L.M. 703+67

GRID: NORTHING: EASTING:



RESET MAG NAIL & WASHER
09/02/05
MDB



O.D.O.T. DISTRICT 2 SURVEY OFFICE

PERSONNEL

REFERENCE NO. 36 A

SHEET 17 OF 21

NOTES BARNHISEL

DATE 05/23/05

ROUTE S.R. 582

H.C. CANTERBURY

WEATHER CLOUDY

COUNTY WOOD

R.C. MIKLOVIC

TEMP. +65°

TOWNSHIP WEBSTER

SECTION 29

T 6 N R 12 E

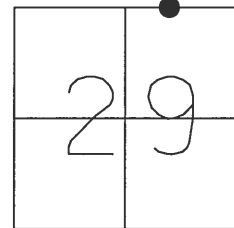
TYPE MONUMENT PK & WASHER

ON SURFACE - ~~BELOW~~ YES

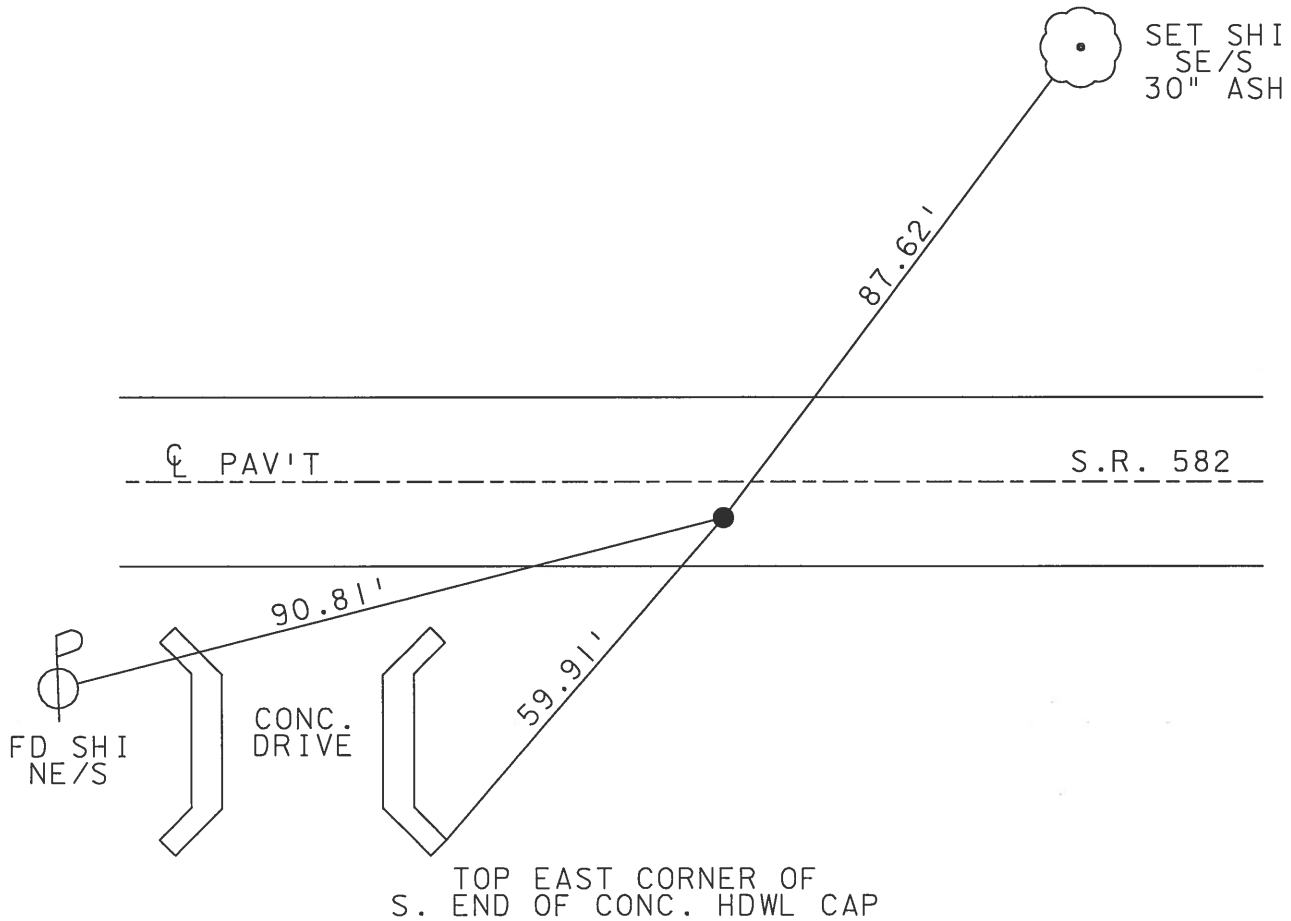
~~LEFT~~ - Q PAV'T - RIGHT 5.7'

3.8' TO RT. EDGE PAVEMENT

S.L.M. 703+67



RESET MAG NAIL & WASHER
09/02/05
MDB



O.D.O.T. DISTRICT 2 SURVEY OFFICE

PERSONNEL

REFERENCE NO. 36 A

SHEET ____ OF ____

NOTES LOEHRKE

H.C. Hoffman

DATE 7-13-90

ROUTE S.R. 582

R.C. STEINHAUSER

WEATHER CLOUDY, WINDY

COUNTY Wood

TEMP. +65

TOWNSHIP Webster

SECTION 29

T6 N12 E

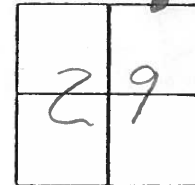
TYPE MONUMENT R.R. Spike

ON SURFACE - BELOW 2 1/2"

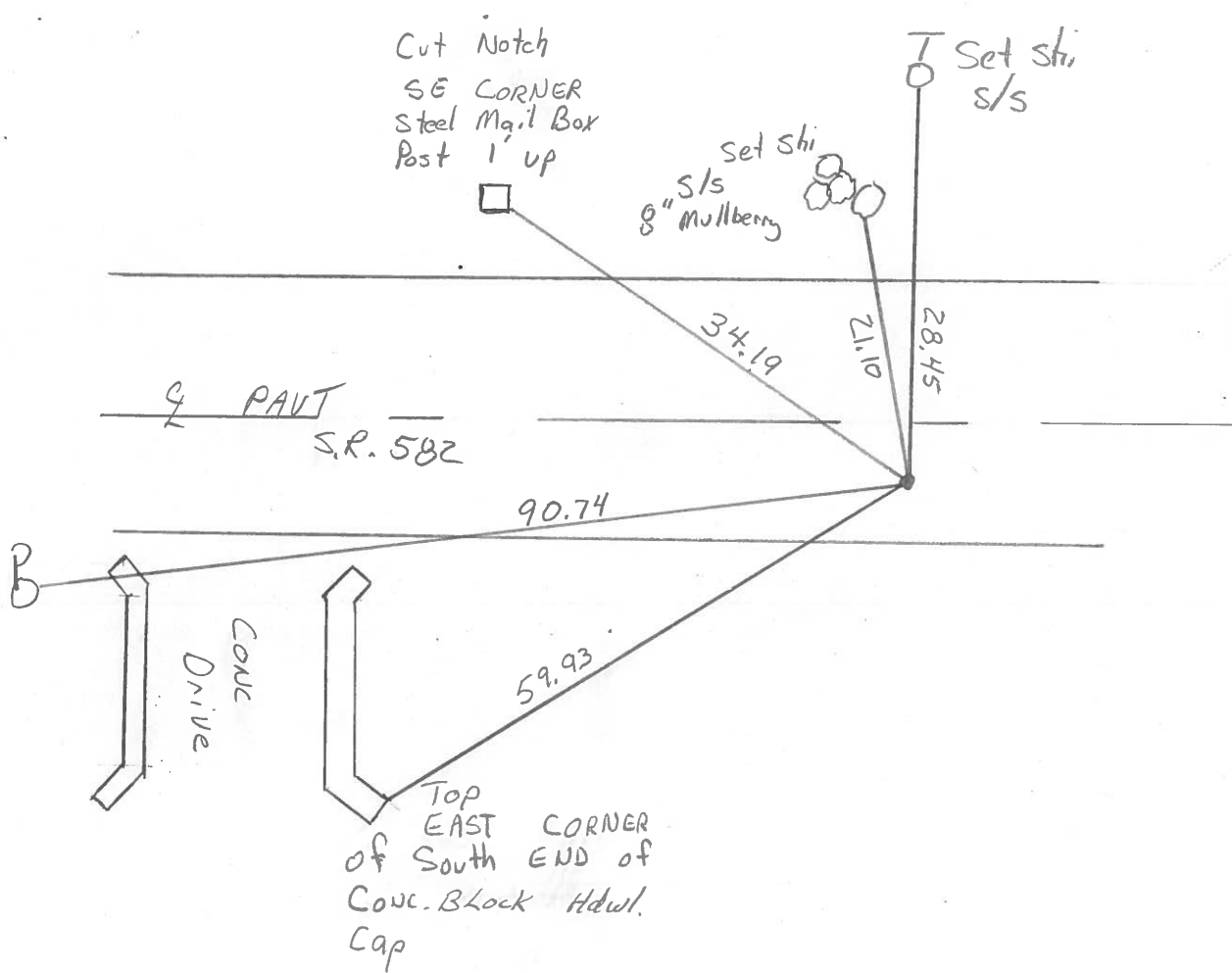
LEFT - C PAV'T. - RIGHT S,3

4.2 TO RT EDGE PAVEMENT

S.L.M. 703+67



Set P.K. & Washer
10-25-90
MB



County Wood S.R. 582

Date 12 July 83

Township Webster

Weather Warm

Section 20

Temp. 85°

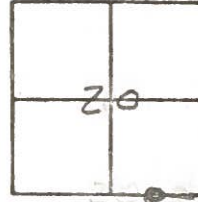
T N, R E

Personnel I. Stone

P. Neuser

R. Michalak

D. Curtis



SLM Sta. 703+66

REF. NO. 36A



Shiner
M.Box
post

62.75'

582

Shiner
Tree

22.15'

85.62'

Con.
Drive

90.95'

Shiner

SR

FA. RR Spk. Surface
14.7' to N. edge put.
5.0' to S. edge put