

O.D.O.T. DISTRICT 2 SURVEY OFFICE

PERSONNEL

REFERENCE NO. 40

SHEET 10 OF 29

NOTES HOMAN

DATE 4-27-10

ROUTE SR 582

H.C. HOMAN

WEATHER SUNNY

COUNTY WOOD

R.C. ROUSOS

TEMP. 40°

TOWNSHIP TROY

SECTION 28

T 6 N R 12 E

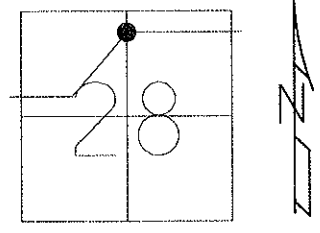
TYPE MONUMENT PK/WASHER

ON SURFACE - ~~BELOW~~ On Surface

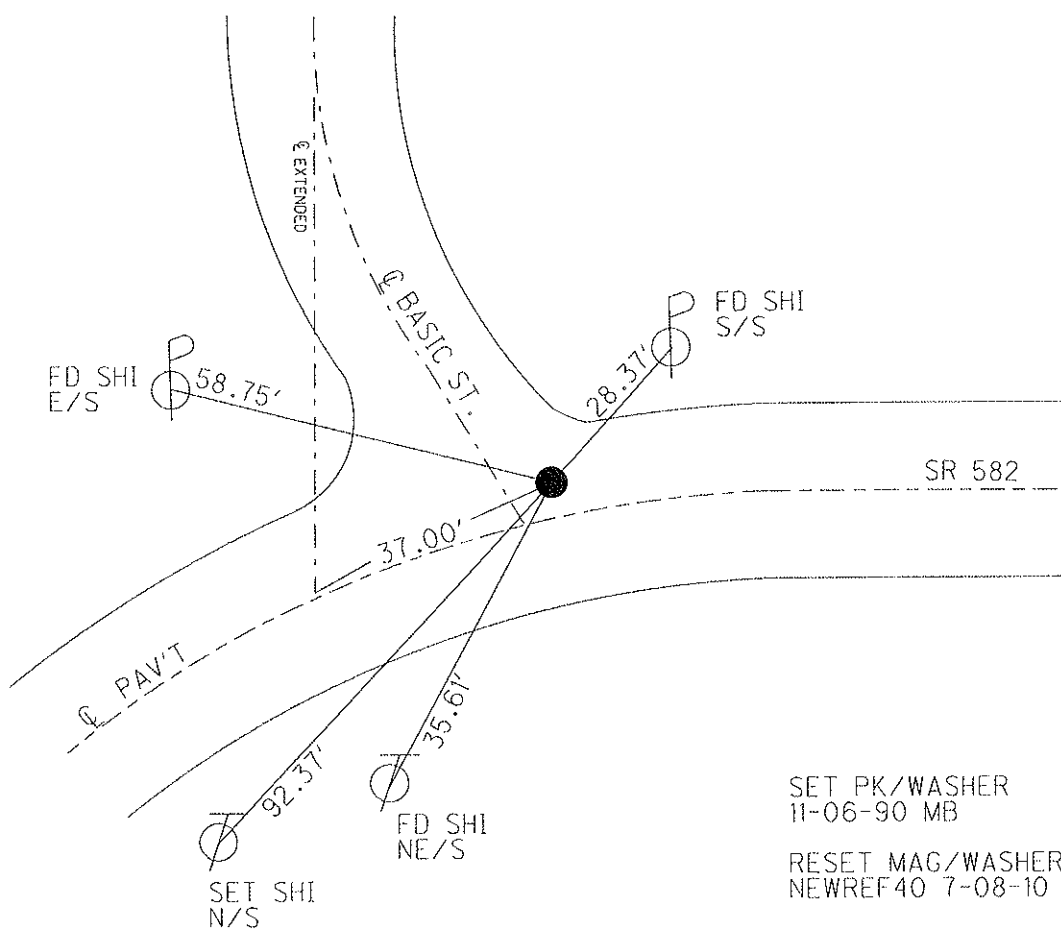
LEFT - ~~C PAV'T~~ - ~~RIGHT~~ 7.2'

16.6' TO RT EDGE PAVEMENT

S.L.M. 768+42.40



GRID: NORTHING: 652456.268 EASTING: 1698939.941



SET PK/WASHER
11-06-90 MB
RESET MAG/WASHER
NEWREF40 7-08-10 DCH

O.D.O.T. DISTRICT 2 SURVEY OFFICE

PERSONNEL

REFERENCE NO. 40

SHEET OF

NOTES LOEHARKE

H.C. Hoffman

R.C. BARNHISEL

DATE 7-23-90

WEATHER PT CLOUDY

TEMP. +75

ROUTE S.R. 582

COUNTY WOOD

TOWNSHIP TROY

SECTION 28

T. 6 N R. 12 E

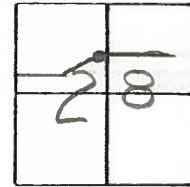
TYPE MONUMENT Sm RR Spk

ON SURFACE - BELOW yes

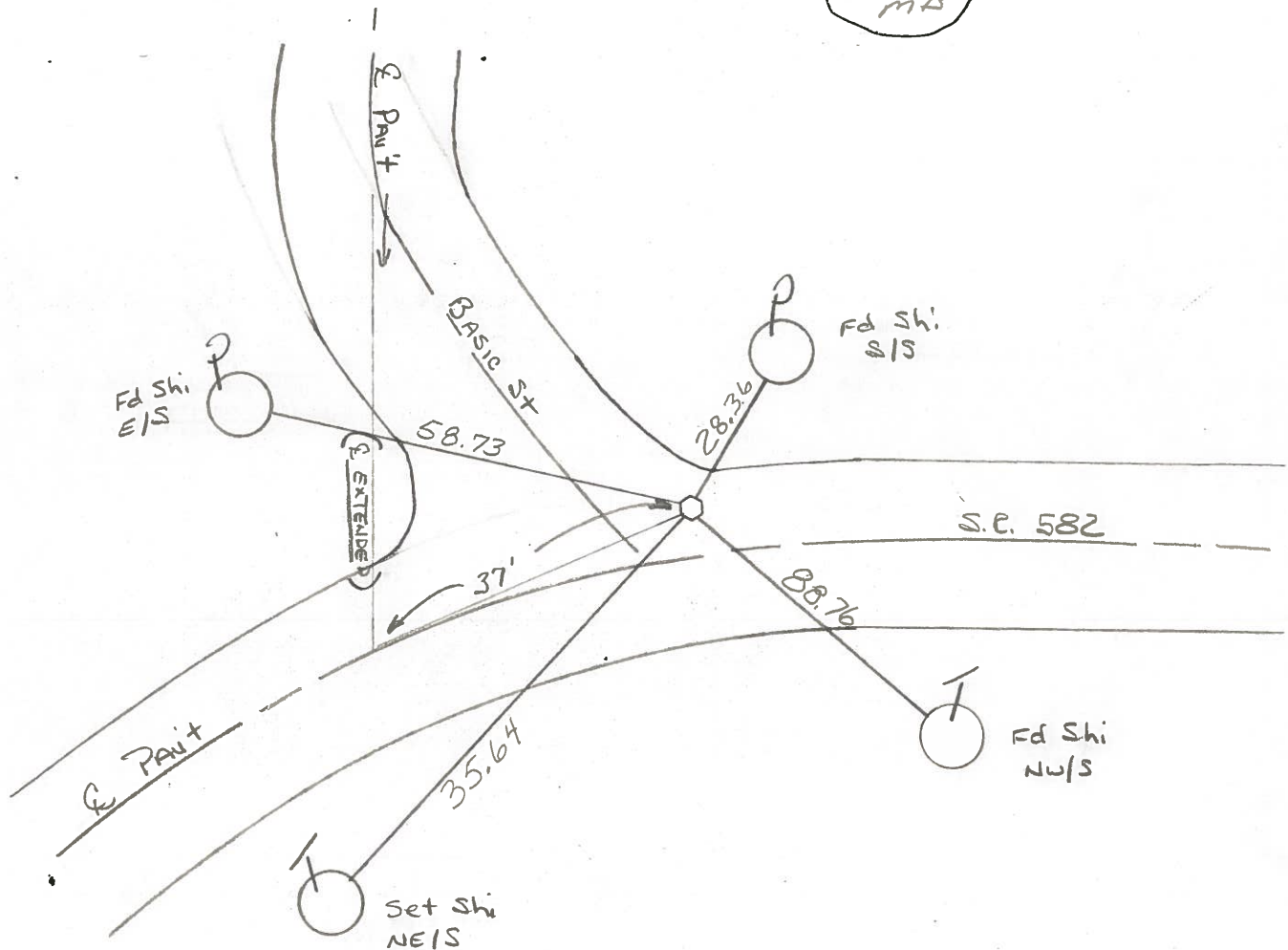
LEFT- & PAV'T. - RIGHT 7.2

16.6 TO RT EDGE PAVEMENT

S.L.M. 769 + 35



Set P.K. / Washer
11-6-90
MB



OD.O.T. DISTRICT 2 SURVEY OFFICE

SHEET 25 OF

County Wood S.R. 582

Date 13 July 83

Township Troy

Weather Warm

Section 28

Temp. 85°

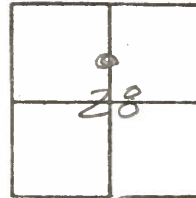
T N, R E

Personnel I. Stone

P. Nusco

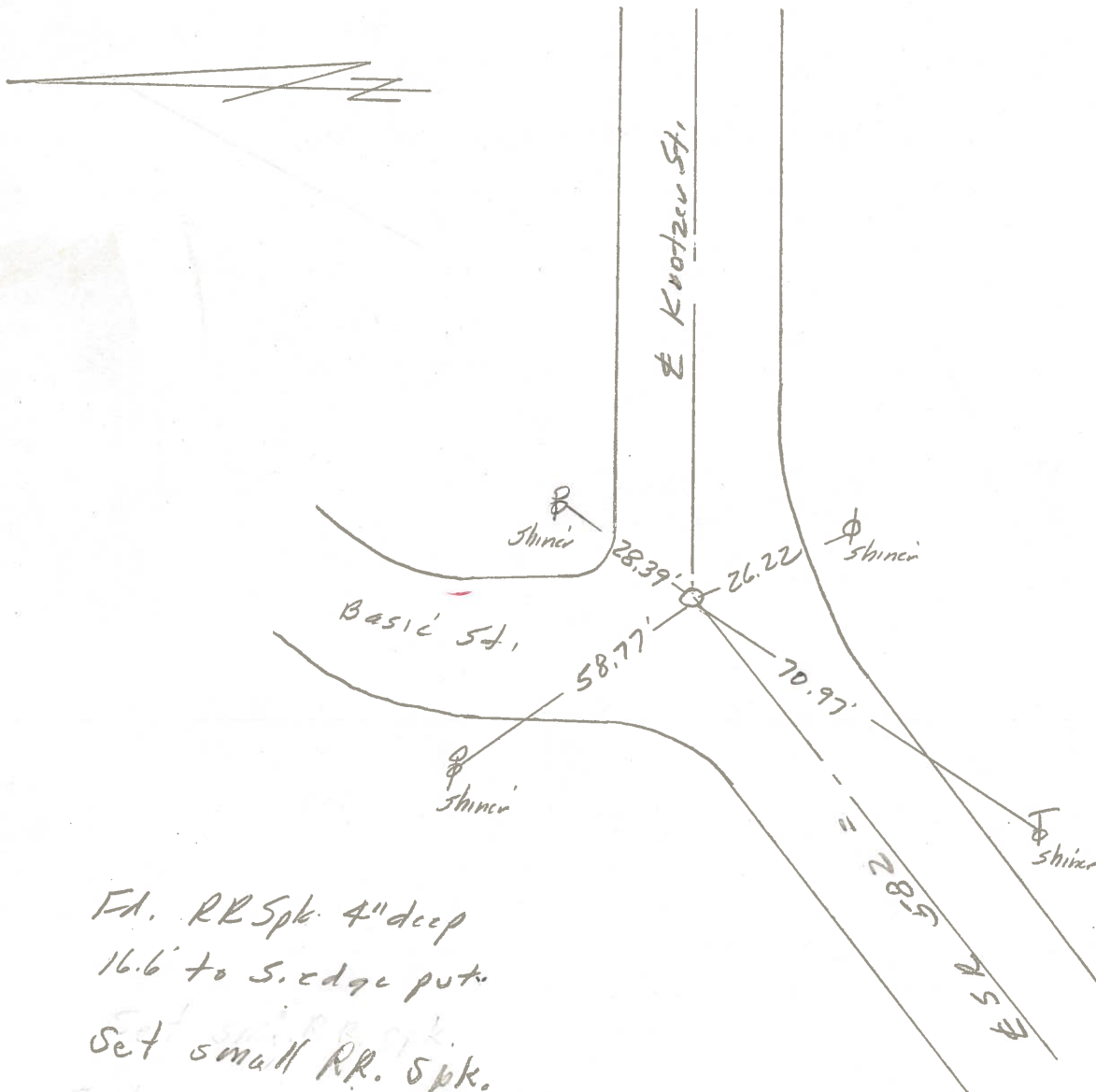
R. Michalak

D. Curtis



SLM STA. 769+26

REF. NO. 40



PERSONNEL TITLE PERSONNEL TITLE

COUNTY Wood DATE April, 11, 1968

S. R. #582 WEATHER Clear

SEC. Luckey TEMP. +55°

DESCRIPTION Ties to Control Points. JOB NO. _____

