

# O.D.O.T. DISTRICT 2 SURVEY OFFICE

PERSONNEL \_\_\_\_\_

REFERENCE NO. 40 C

SHEET 13 OF 29

NOTES HOMAN

DATE 4-27-10

ROUTE SR 582

H.C. HOMAN

WEATHER SUNNY

COUNTY WOOD

R.C. ROUSOS

TEMP. 40°

TOWNSHIP TROY

SECTION 28

T 6 N R 12 E

TYPE MONUMENT PK Nail

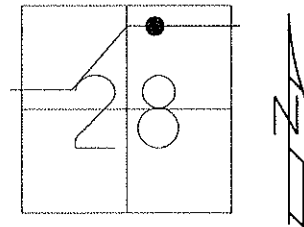
ON SURFACE - ~~BELOW~~ On Surface

~~LEFT - C PAV'T - RIGHT~~ 8.3'

TO EDGE PAVEMENT

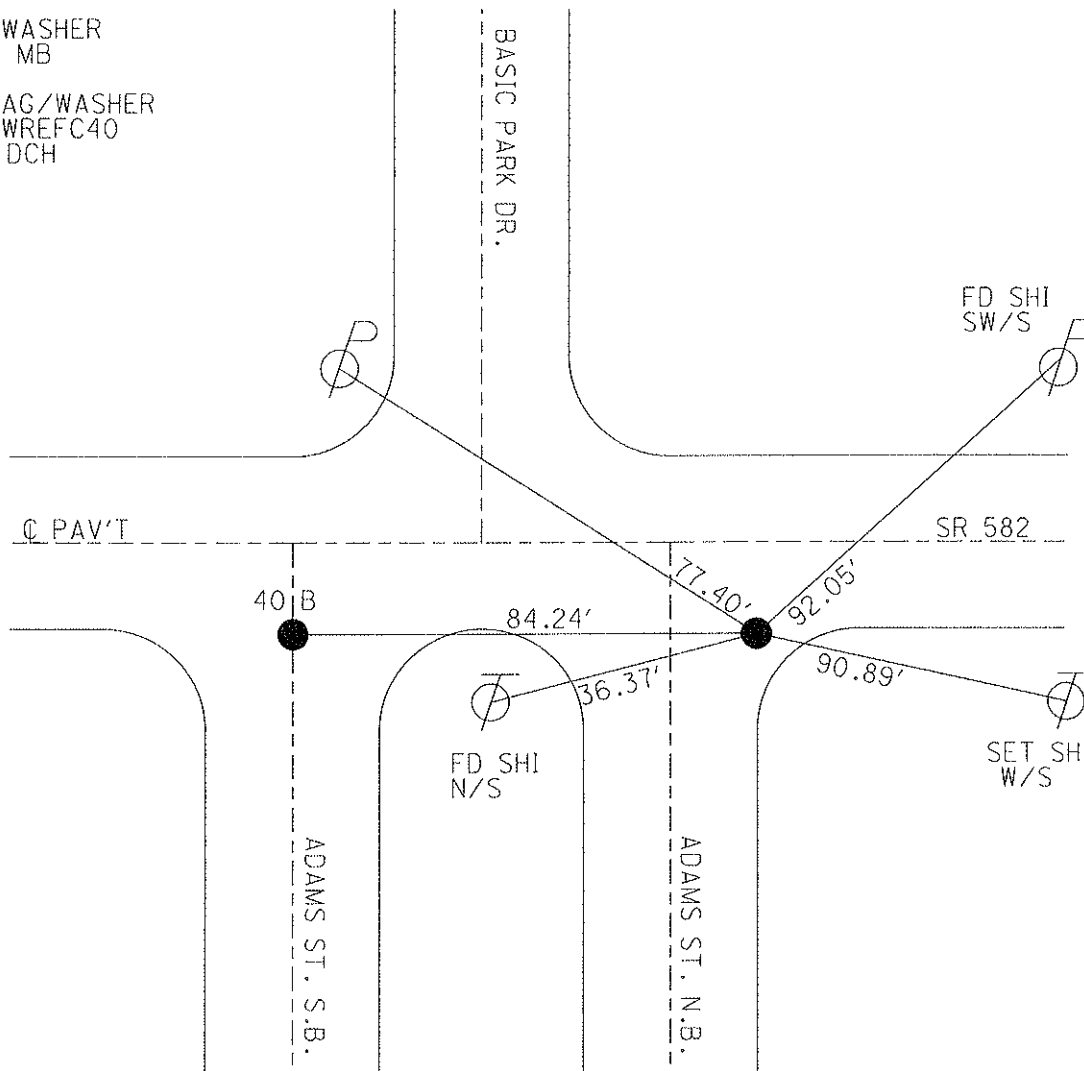
S.L.M. 774+04.98, 9.3' East C PAV'T TO SOUTH

GRID: NORTHING: 652451.539 EASTING: 1699502.536



SET PK/WASHER  
11-06-90 MB

RESET MAG/WASHER  
40-C-NEWREFC40  
7-08-10 DCH



# O.D.O.T. DISTRICT 2 SURVEY OFFICE

PERSONNEL

REFERENCE NO. 40B & 40C

SHEET      OF     

NOTES Locharke

H.C. Hoffman

R.C. BARNHISEL

DATE 7-23-90

WEATHER A Cloudy

TEMP. +75

ROUTE S.R. 582

COUNTY WOOD

TOWNSHIP TROY

SECTION 28

T 6 N R 12 E

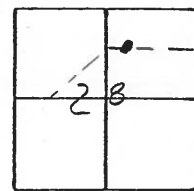
TYPE MONUMENT P.K Nails

ON SURFACE - BELOW     

LEFT - & PAVT. - RIGHT "A" 8.8 "B" 8.3

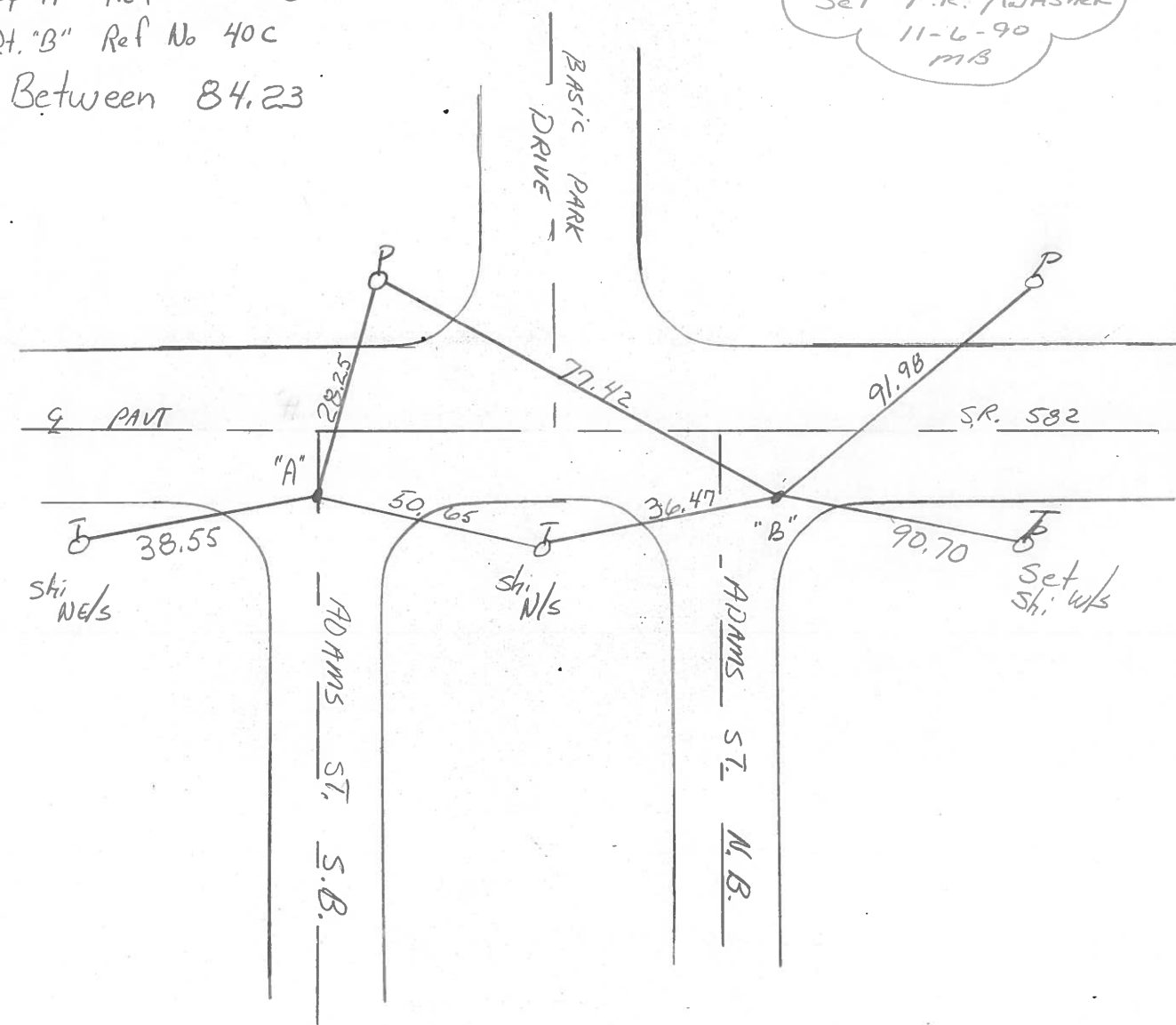
18.0 TO Lt EDGE PAVT "B" 9.3 E & PAVT to South

S.L.M. 774+12 774+96



At "A" Ref No. 40B  
 At "B" Ref No 40C  
 Between 84.23

Set P.K. / Washer  
11-6-90  
MB



County Wood S.R. 582

Date 13 July 83

Township Troy

Weather Warm

Section 28

Temp. 87°

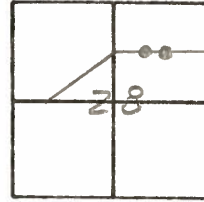
T.N., R.E.

Personnel L. Stone

P. Neuser

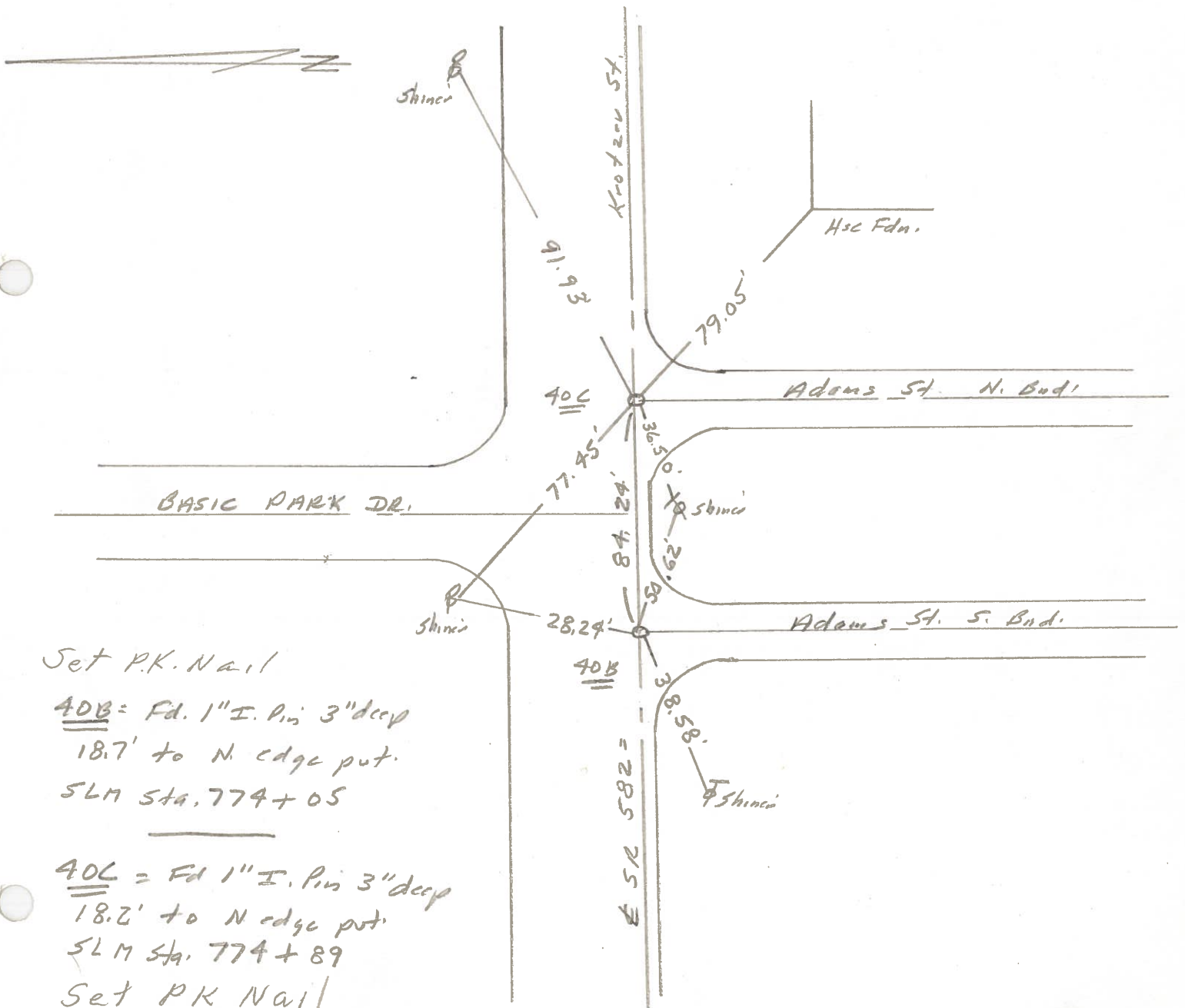
R. Michalek

D. Curtis



SLM STA.

REF. NO. 40B & 40C



Set P.K. Nail

40B = Fd. 1" I. Pin 3" deep  
18.7' to N edge put.  
SLM Sta. 774 + 05

40C = Fd 1" I. Pin 3" deep  
18.2' to N edge put.  
SLM Sta. 774 + 89  
Set PK Nail

PERSONNEL	TITLE	PERSONNEL	TITLE
Morrison			
Bowers			
Holcombe			
Earn.			

COUNTY Wood DATE April 12 1968  
 S. R. # 382 WEATHER Clear  
 SEC. Luckey TEMP. +60°

DESCRIPTION Ties to Control Points. JOB NO. \_\_\_\_\_

