

O.D.O.T. DISTRICT 2 SURVEY OFFICE

PERSONNEL

REFERENCE NO. 40 E

SHEET 15 OF 29

NOTES HOMAN

DATE 4-27-10

ROUTE SR 582

H.C. HOMAN

WEATHER SUNNY

COUNTY WOOD

R.C. ROUSOS

TEMP. 40°

TOWNSHIP TROY

SECTION 28

T. 6 N R. 12 E

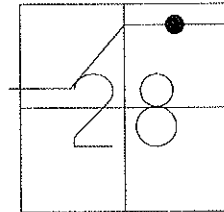
TYPE MONUMENT 3/4" IRON ROD

ON SURFACE - ~~BELOW~~ On Surface

~~LEFT - C PAV'T - RIGHT~~ 6.2'

15.7' TO LT. EDGE PAVEMENT

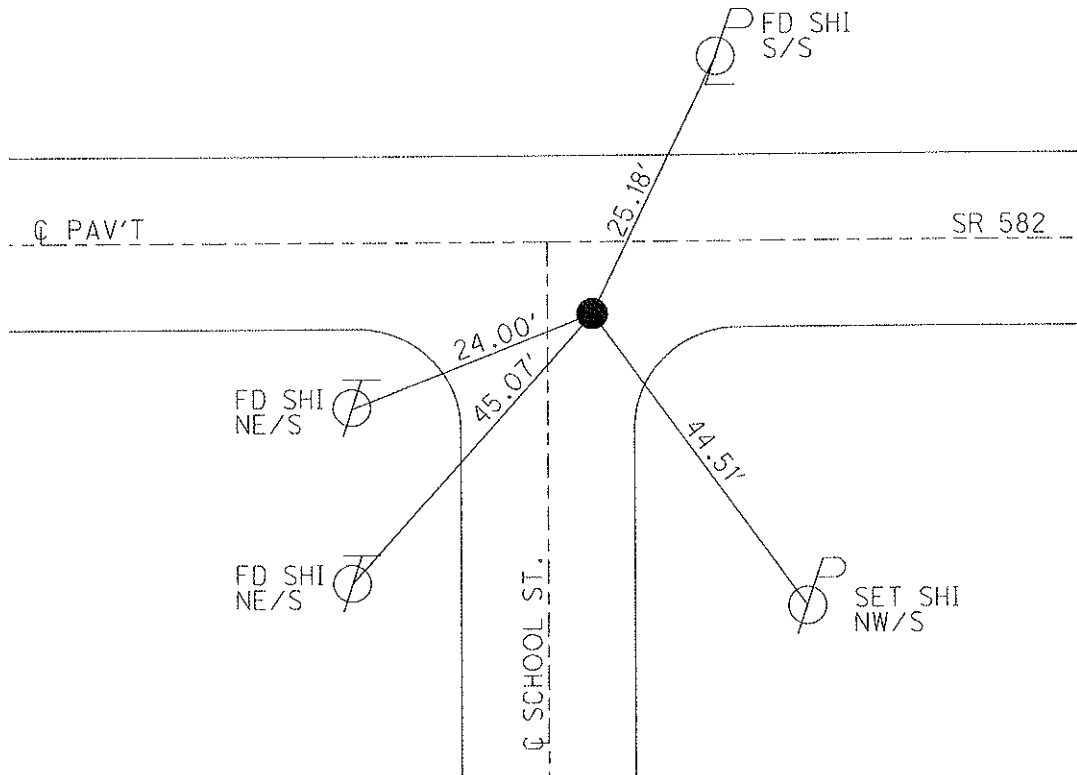
S.L.M. 781+75.85, 1.0' E. C. SCHOOL ST.



GRID: NORTHING: 652447.172 EASTING: 1700273.357

SET PK/WASHER
11-06-90 MB

RESET MAG/WASHER
NEWREFE40 7-08-10 DCH



O.D.O.T. DISTRICT 2 SURVEY OFFICE

PERSONNEL

REFERENCE NO. 40 E

SHEET OF

NOTES LOEHRKE

H.C. Hoffman

R.C. BARNHISEL

DATE 7-23-90

WEATHER Cloudy

TEMP. +78

ROUTE SR 582

COUNTY WOOD

TOWNSHIP TROY

SECTION 28

T. 6 N. R. 12 E

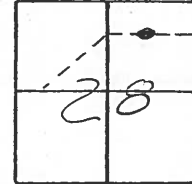
TYPE MONUMENT 3/4" IRON ROD

ON SURFACE - BELOW 1 INCH

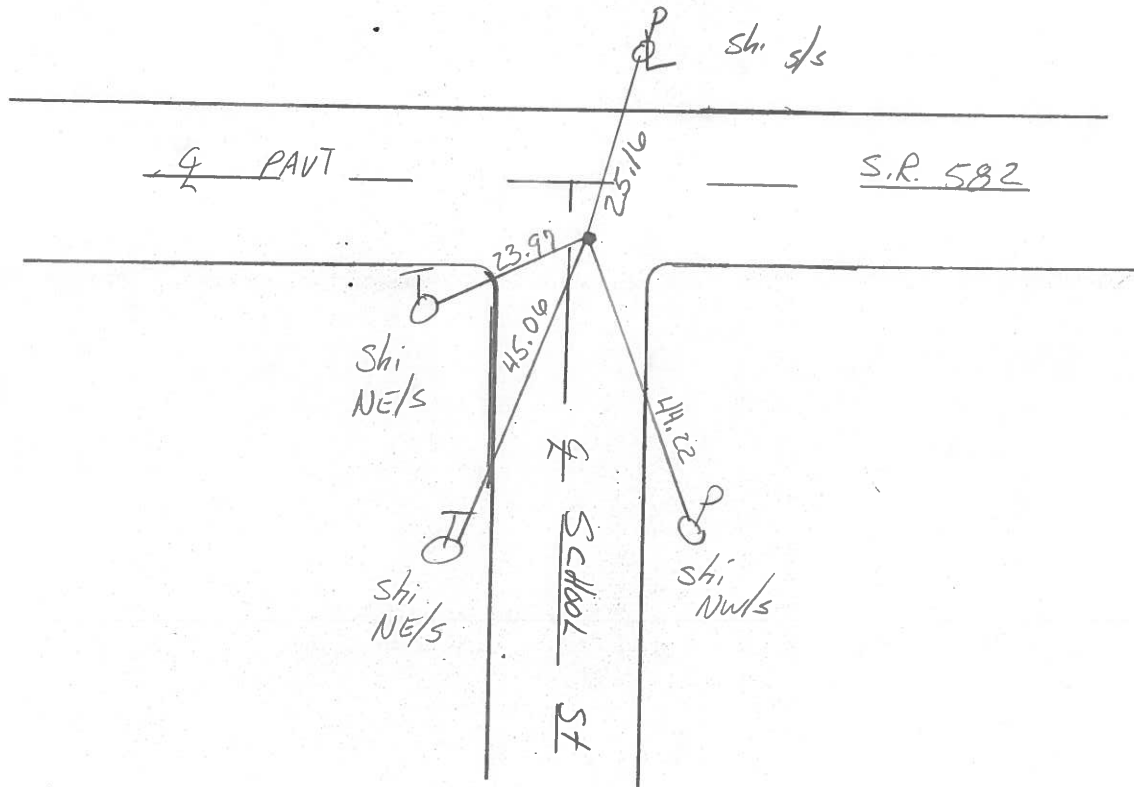
~~LEFT - & PAV'T. - RIGHT~~ 6.2

15.7 TO LT EDGE PAVEMENT 1.0' E of School St.

S.L.M. 782 + 67



SET P.K. / WASHER
 11-6-90
 MB



County Wood S.R. 582

Date 13 July 83

Township Troy

Weather Warm

Section 28

Temp. 87°

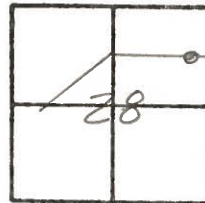
T N, R E

Personnel I. Slone

P. Newsen

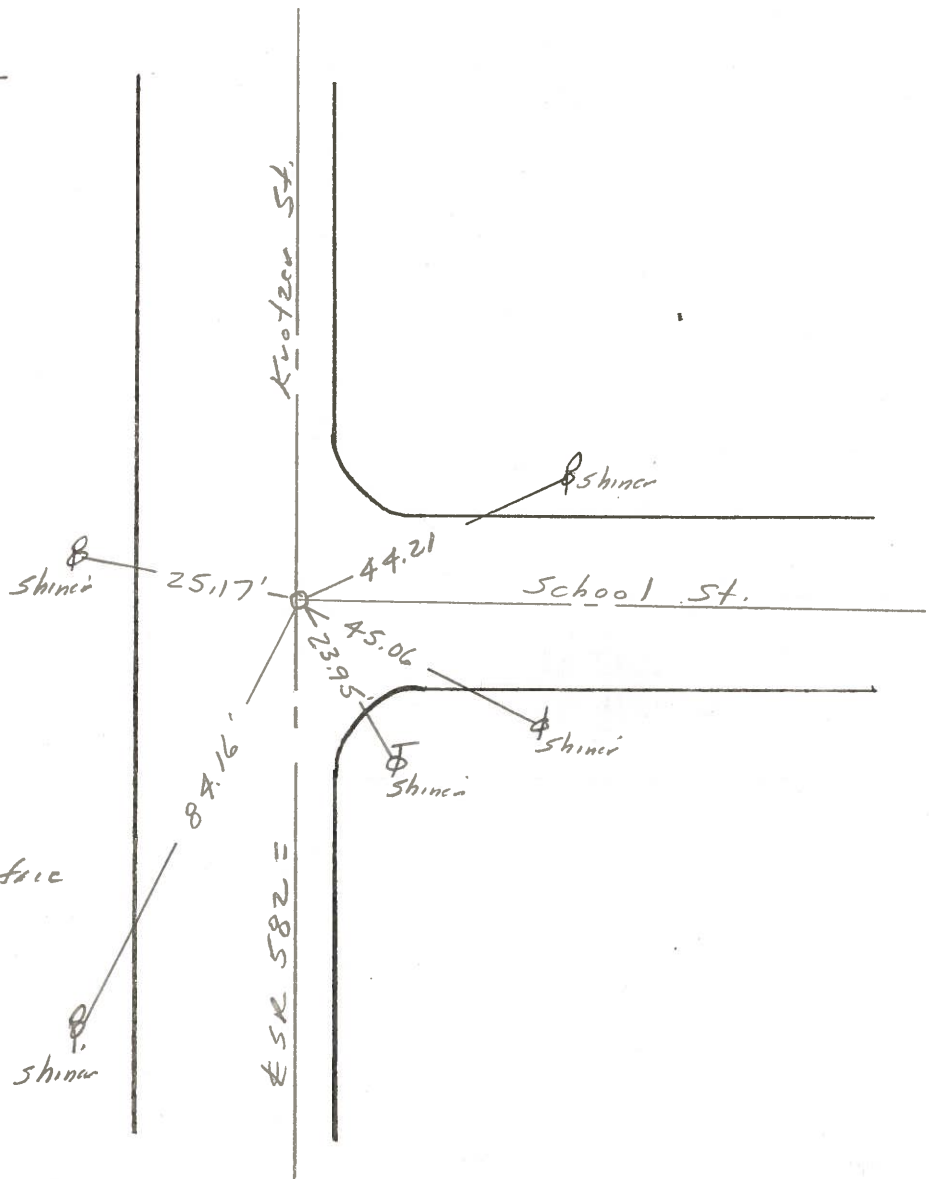
R. Michalak

D. Curtis



SLM STA. 782+61

REF. NO. 40E



Fd. 3/4" Brass bolt To Surface
15.5' to N. edge put.

PERSONNEL TITLE PERSONNEL TITLE
 Morrison _____
 Bowers _____
 Holcombe _____
 Kern _____

COUNTY Wood DATE April, 12, 1968
 S. R. # 582 WEATHER Clear
 SEC. Lucky. TEMP. 160°

DESCRIPTION Ties to Control Points. JOB NO. _____

