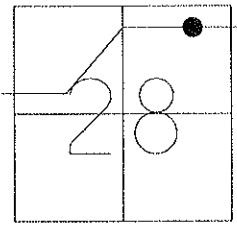


O.D.O.T. DISTRICT 2 SURVEY OFFICE

PERSONNEL	REFERENCE NO. <u>40 G</u>	SHEET <u>17</u> OF <u>29</u>
NOTES <u>HOMAN</u>	DATE <u>4-27-10</u>	ROUTE <u>SR 582</u>
H.C. <u>HOMAN</u>	WEATHER <u>SUNNY</u>	COUNTY <u>WOOD</u>
R.C. <u>ROUSOS</u>	TEMP. <u>45°</u>	TOWNSHIP <u>TROY</u>
		SECTION <u>28</u>
		T <u>6</u> N R <u>12</u> E

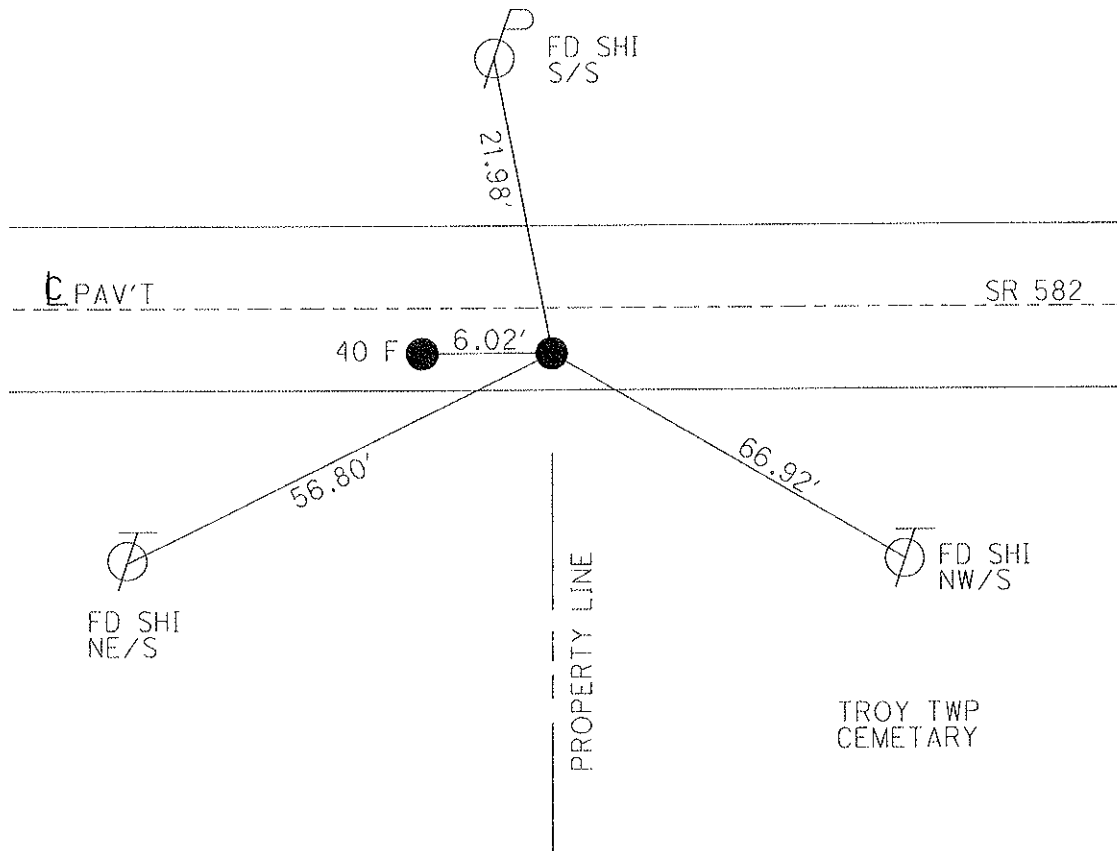
TYPE MONUMENT MAG/WASHER  
 ON SURFACE - ~~BELOW~~ On Surface  
 LEFT - ~~C PAV'T~~ - RIGHT 5.8'  
3.5' TO RT EDGE PAVEMENT  
 S.L.M. 784+28 REC



GRID: NORTHING: 652446.363 EASTING: 1700433.172

SET PK/WASHER  
11-06-90 MB

RESET MAG/WASHER  
NEWREFG40  
7-08-10 DCH



# O.D.O.T. DISTRICT 2 SURVEY OFFICE

PERSONNEL

REFERENCE NO. 40 F

SHEET      OF     

NOTES LOEHRKE

H.C. Hoffman

R.C. BARNHISEL

DATE 7-23-90

WEATHER Pt Cloudy

TEMP. +78

ROUTE 582

COUNTY WOOD

TOWNSHIP TROY

SECTION 28

T 6 N R 12 E

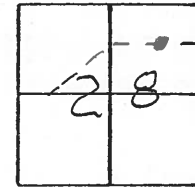
TYPE MONUMENT P.K. Nails

ON SURFACE - ~~BELOW~~ yes

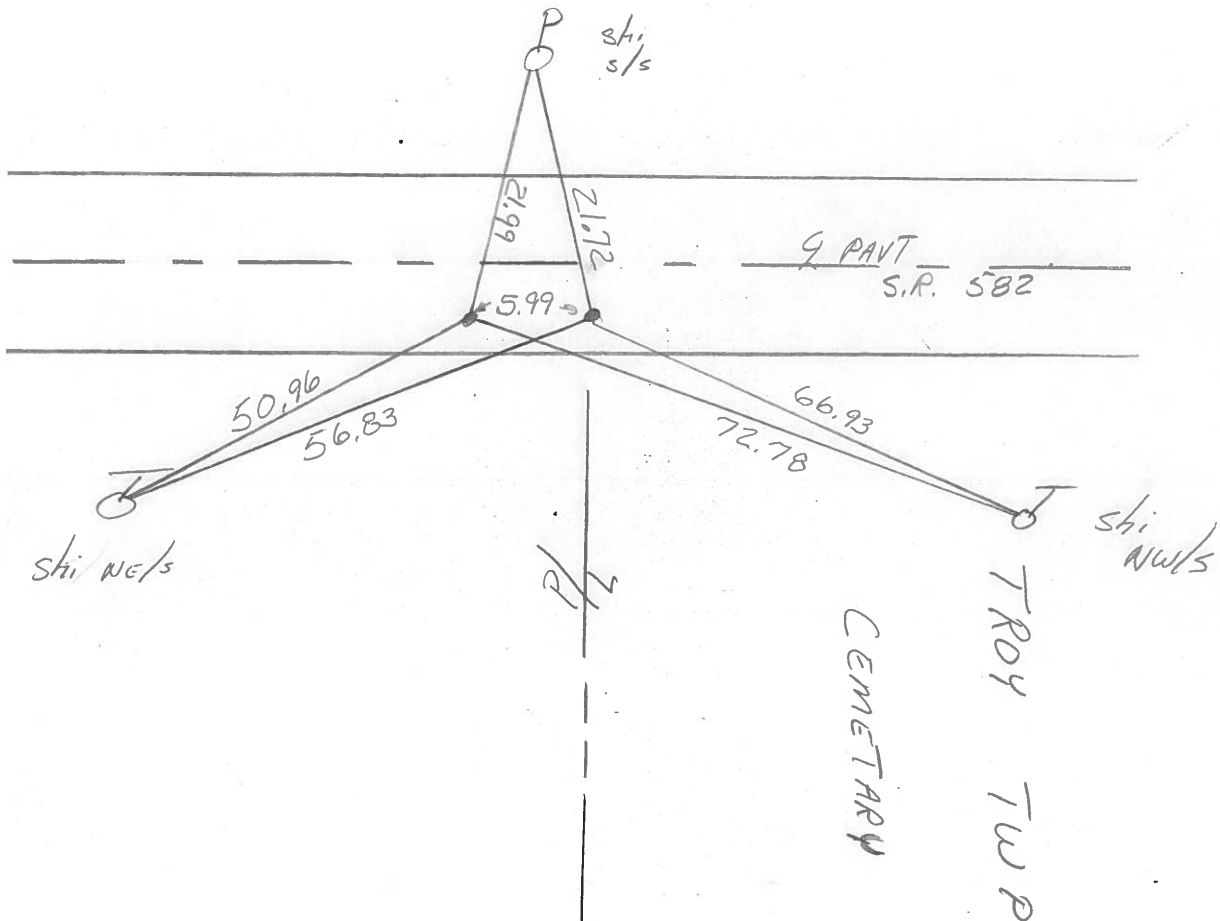
~~LEFT - & PAV'T.~~ - RIGHT S.8

35 TO Rt EDGE PAVEMENT

S.L.M. 784+22      784+28



Set P.K. / Washer  
11-6-90  
MB



County Wood S.R. 582

Date 13 July 83

Township Troy

Weather W ccm

Section 28

Temp. 88°

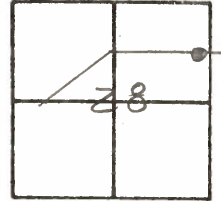
T N, R E

Personnel I. Stone

P. Neuser

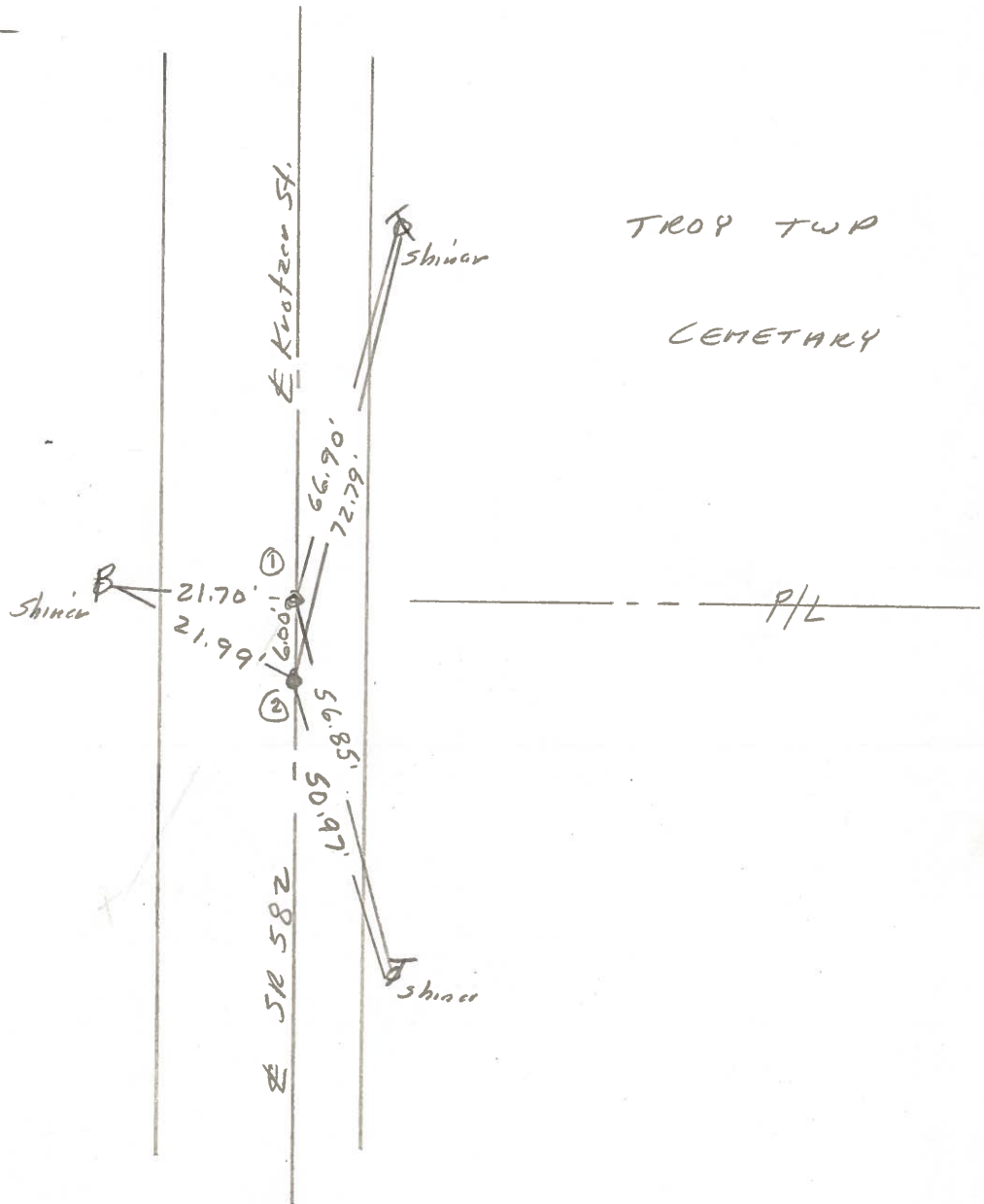
R. Michalak

D. Curtis



SLM STA. 784+14 & +20

REF. NO. 40F



Set PK Nail

- ① Fd 1" I. Pin 3" deep  
15.6' to N. edge put.  
3.2' to S. edge put.

- ② Fd RR Spk 6" deep  
15.2' to N. edge put.  
3.5' to S. edge put.

Set PK Nail