

O.D.O.T. DISTRICT 2 SURVEY OFFICE (USE ONLY)

PERSONNEL

REFERENCE NO. 6

SHEET 6 OF 15

NOTES RHOADES
 H.C. AUBLE
 R.C. MAHLER
O'DONNELL

DATE 6-12-20
 WEATHER SUNNY
 TEMP. 66°F

ROUTE SR 18
 COUNTY WOOD
 TOWNSHIP JACKSON
 SECTION 20
 T 3 N R 9 E

DWG BY MAHLER PID PAVE TRAIN

TYPE MONUMENT MAG/WASHER

ON SURFACE - ~~BELOW~~ ON

OFFSET \varnothing PAVEMENT 0.3' RT : RT

- TO - EDGE PAVEMENT

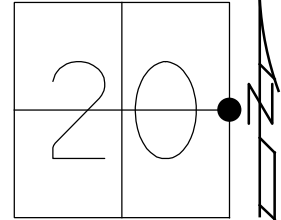
STATION: 108+86

HORIZ.DATUM: NAD83 (2011)

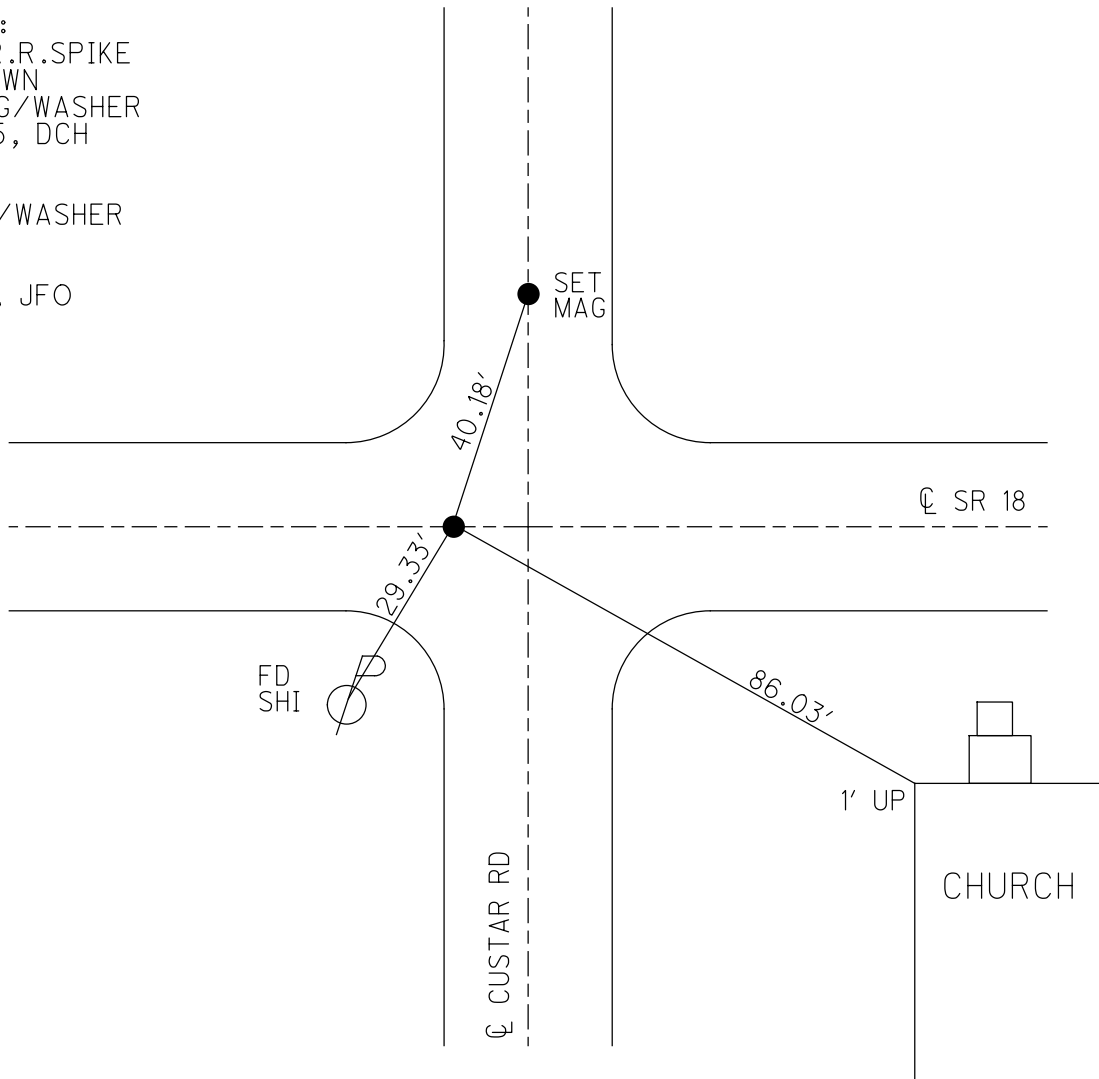
GEOID: NAVD88-2012A

GRID: NORTHING: 563140.467

EASTING: 1599181.257



RECORD:
 FD LG.R.R.SPIKE
 3.5" DOWN
 SET MAG/WASHER
 7-25-05, DCH
 REF5
 9-04-15
 FD MAG/WASHER
 REF6
 6-12-20
 9-16-21, JFO



O.D.O.T. DISTRICT 2 SURVEY OFFICE (USE ONLY)

PERSONNEL

REFERENCE NO. 6

SHEET 6 OF 13

NOTES RHOADES
 H.C. AUBLE
 R.C. MAHLER
O'DONNELL

DATE 6-12-20
 WEATHER SUNNY
 TEMP. 66°F

ROUTE SR 18
 COUNTY WOOD
 TOWNSHIP JACKSON
 SECTION 20

DWG BY MAHLER PID PAVE TRAIN

T 3 N R 9 E

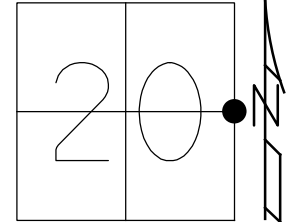
TYPE MONUMENT MAG/WASHER

ON SURFACE - ~~BELOW~~ ON

OFFSET \odot PAVEMENT 0.3' ~~ET~~ : RT

- TO - EDGE PAVEMENT

STATION: 108+86



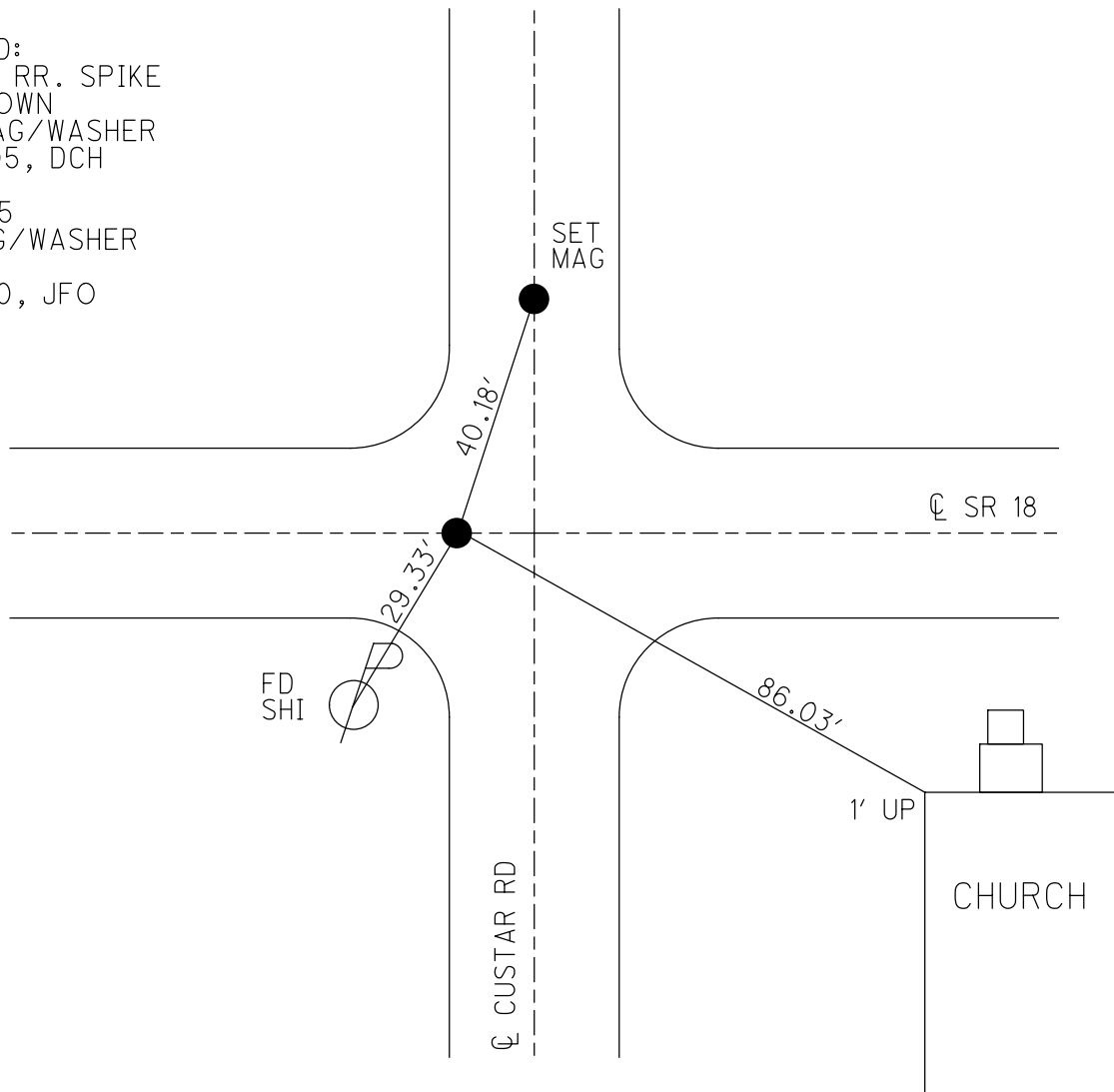
HORZ. DATUM: NAD83 (2011)

GEOID: NAVD88-2012A

GRID: NORTHING: 563140.467

EASTING: 1599181.257

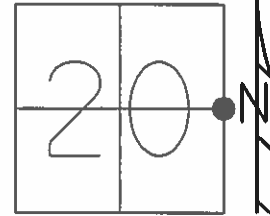
RECORD:
 FD LG. RR. SPIKE
 3.5" DOWN
 SET MAG/WASHER
 7-25-05, DCH
 REF5
 9-04-15
 FD MAG/WASHER
 REF6
 6-12-20, JFO



O.D.O.T. DISTRICT 2 SURVEY OFFICE (USE ONLY)

PERSONNEL _____ REFERENCE NO. 6 SHEET 6 OF 13
 NOTES LEU DATE 09-04-15 ROUTE SR 18
 H.C. HOMAN WEATHER PTLY CLOUDY COUNTY WOOD
 R.C. LEU TEMP. 78°F TOWNSHIP JACKSON
 _____ SECTION 20
 _____ T 3 N R 9 E

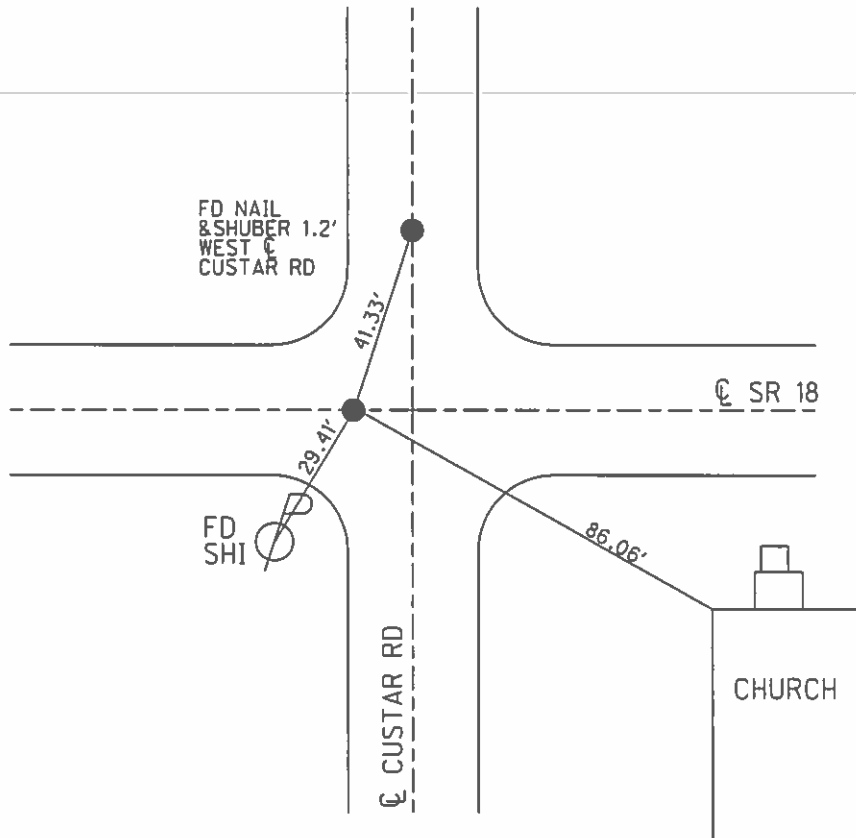
TYPE MONUMENT MAG/WASHER
 ON SURFACE - ~~BELOW~~ ON
~~LEFT~~ = ☉ PAV'T - RIGHT 0.3'
- TO - EDGE PAVEMENT
 S.L.M. 108+86
 GRID: NORTHING: 563140.46 EASTING: 1599181.28



RECORD:
 FD LG. RR. SPK.
 3.5" DOWN

SET MAG/WASHER
 7-25-05, DCH

GPS, REF5
 09-04-15



O.D.O.T. DISTRICT 2 SURVEY OFFICE

PERSONNEL

REFERENCE NO. 6

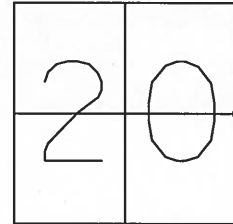
SHEET 5 OF 14

NOTES STEVE
 H.C. DUANE
 R.C. JOE

DATE 4-11-05
 WEATHER CLOUDY
 TEMP. 58°

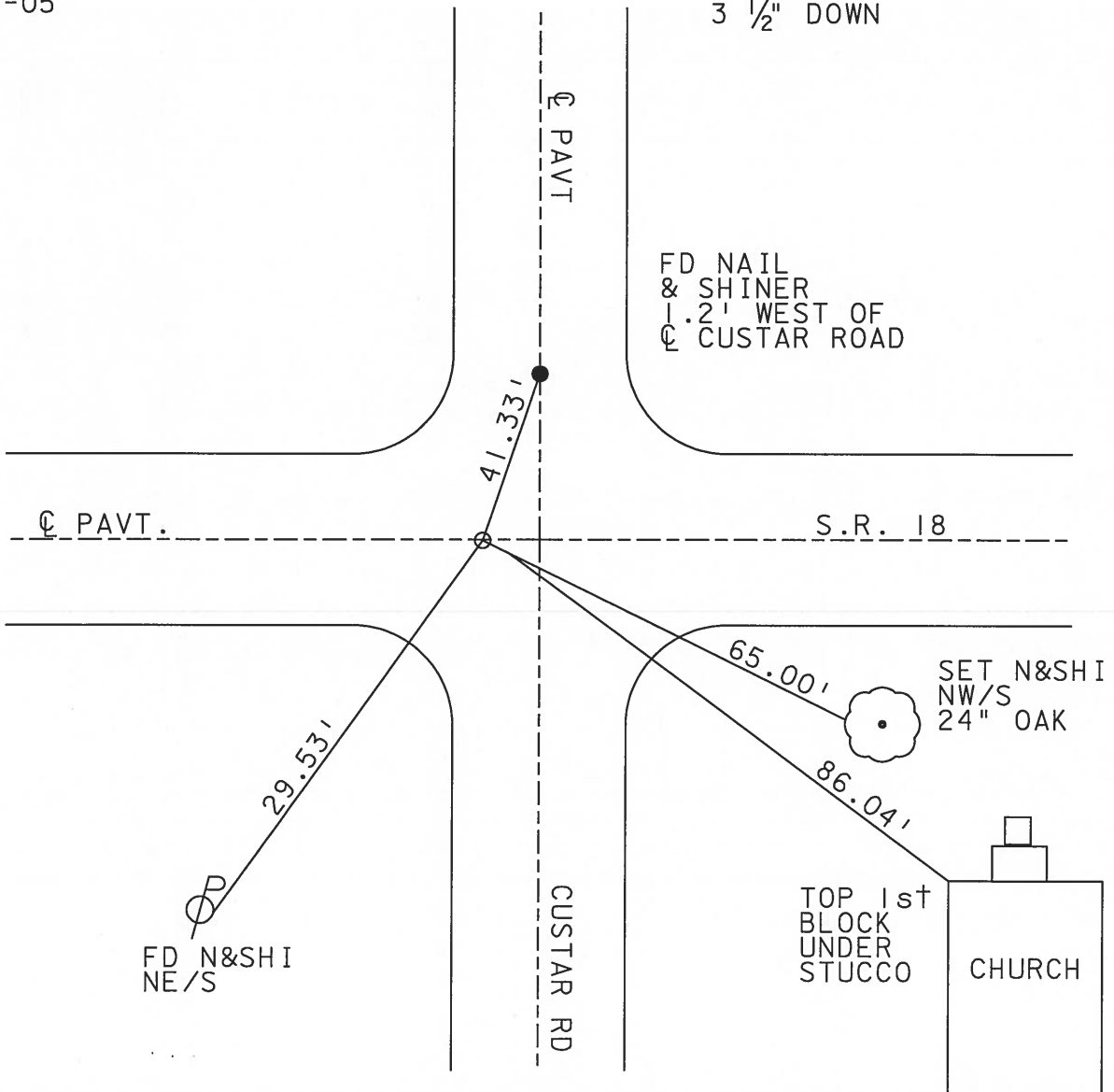
ROUTE S.R. 18
 COUNTY WOOD
 TOWNSHIP JACKSON
 SECTION 20
T 3 N R 9 E

TYPE MONUMENT PK & WASHER
 ON SURFACE - ~~BELOW~~ ON
 LEFT - ~~Q PAVT - RIGHT~~ 0.3'
TO EDGE PAVEMENT
 S.L.M. 108+86



RESET MAG & WASHER
 7-25-05
 DCH

FD LARGE RR SPIKE
 3 1/2" DOWN



O.D.O.T. DISTRICT 2 SURVEY OFFICE

PERSONNEL

REFERENCE NO. 6

SHEET OF

NOTES BARNHISEL

H.C. Loehcke

DATE 3-19-91

ROUTE 18

R.C. HOFFMAN

WEATHER cloudy - winter

COUNTY Wood

TEMP. +45°

TOWNSHIP JACKSON

SECTION 20

T 3 N R 9 E

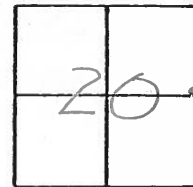
TYPE MONUMENT P.K. & Washer

ON SURFACE - ~~BELOW~~ yes

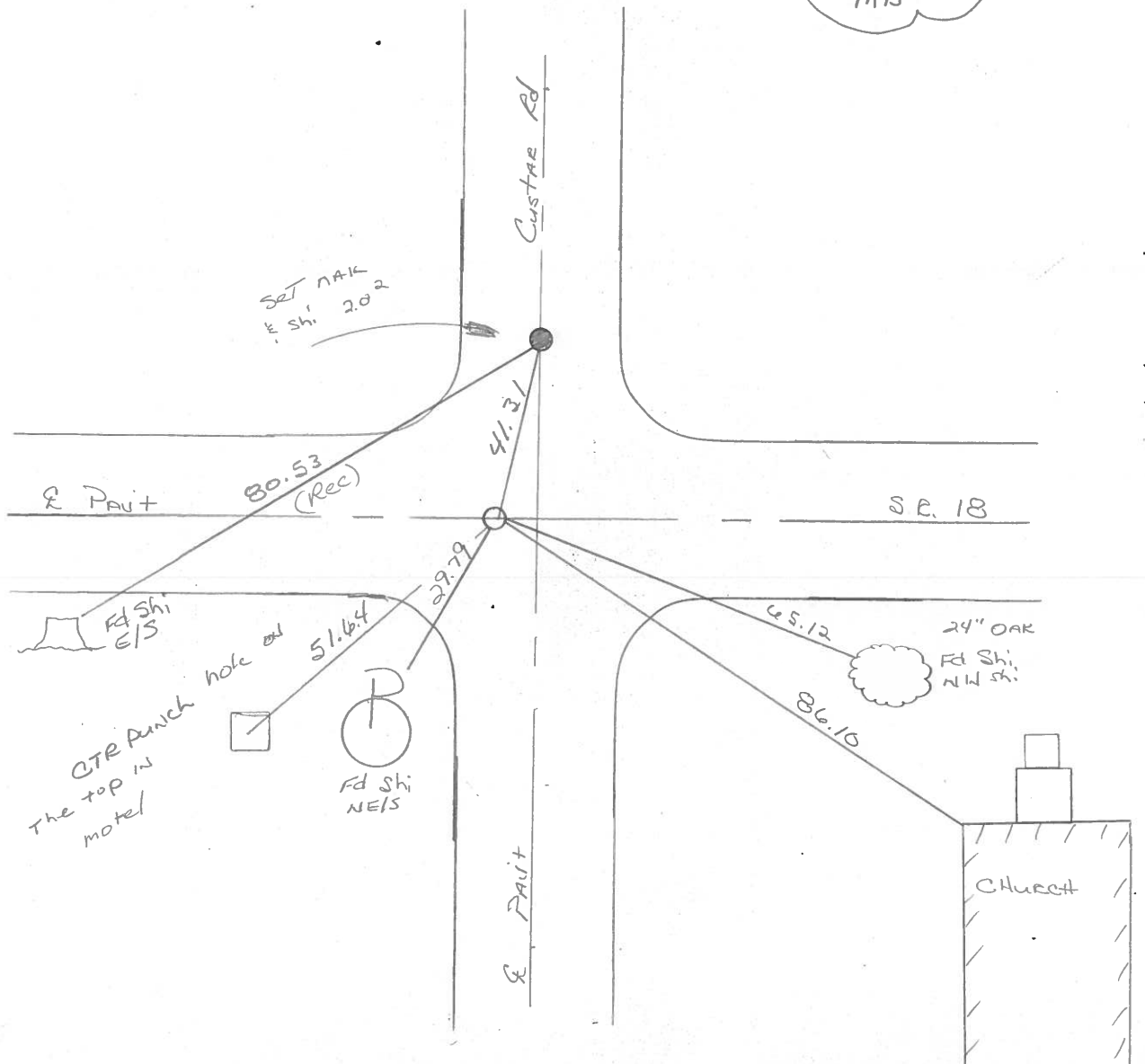
LEFT - ~~PAV'T.~~ RIGHT 0.6

- TO - EDGE PAVEMENT

S.L.M. 108+63



SET P.K. & Washer
 4-17-91
 MB



County WOOD S.R. 18

Date 11-25-83

Township JACKSON

Weather CLEAR, WINDY

Section 20

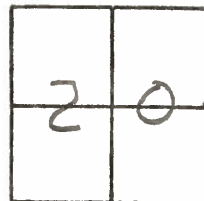
Temp. +32°

T3N, R9E

Personnel Householder R.C

Loehke

Barnhiser HC



FD Lg R.R. SPIKE @ SURFACE

0.6' Lt & S.R. 18,

10' W. OF S. CUSTAR RD

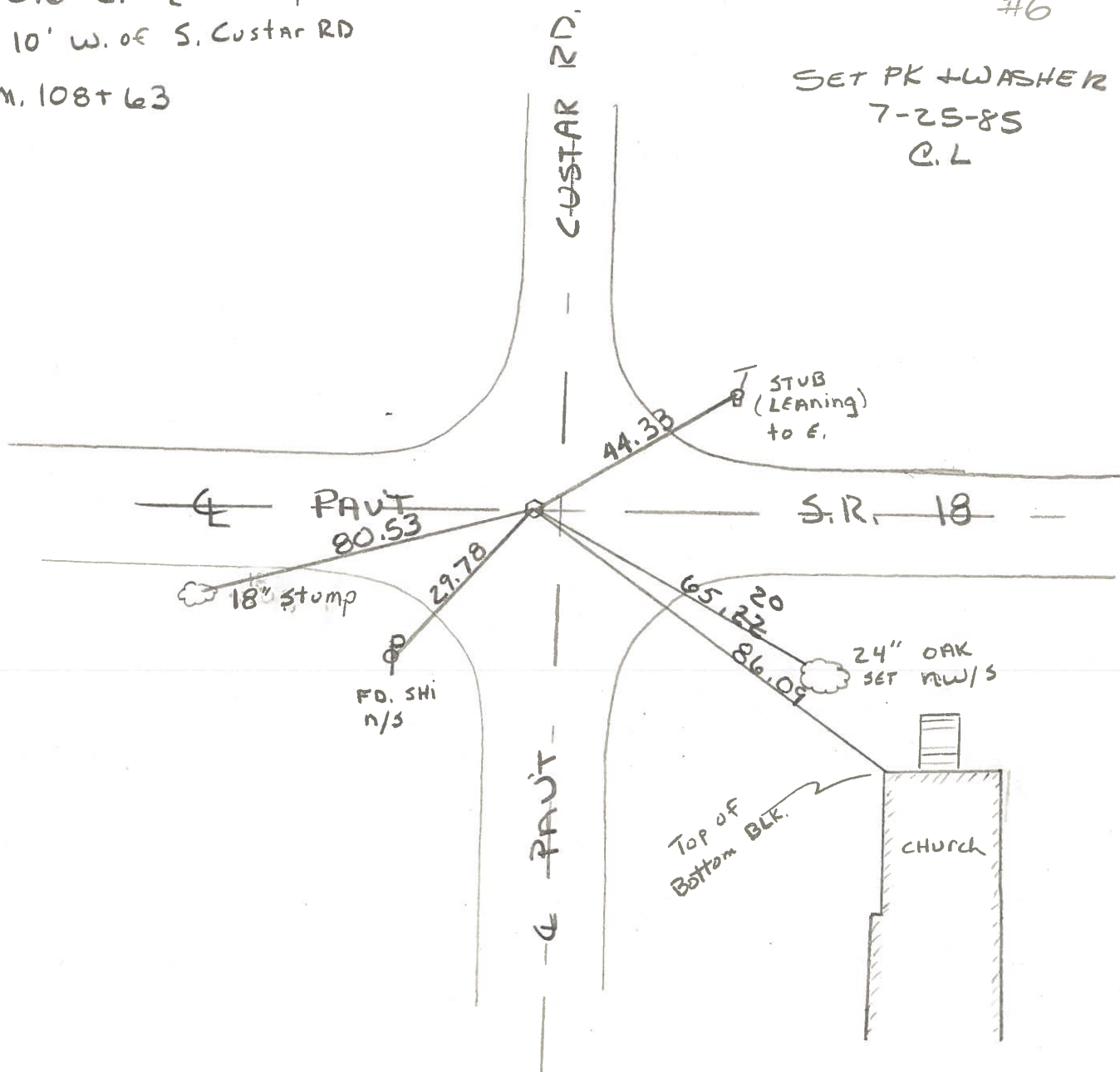
S.L.M. 108+63

#6

SET PK + WASHER

7-25-85

C.L



County WOOD S.R. 18

Date 11-25-83

Township JACKSON

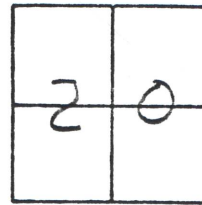
Weather CLEAR, WINDY

Section 20

Temp. +32°

T3N, R9E

Personnel Hauschalter R.C
Loehcke
Barnhiser HC



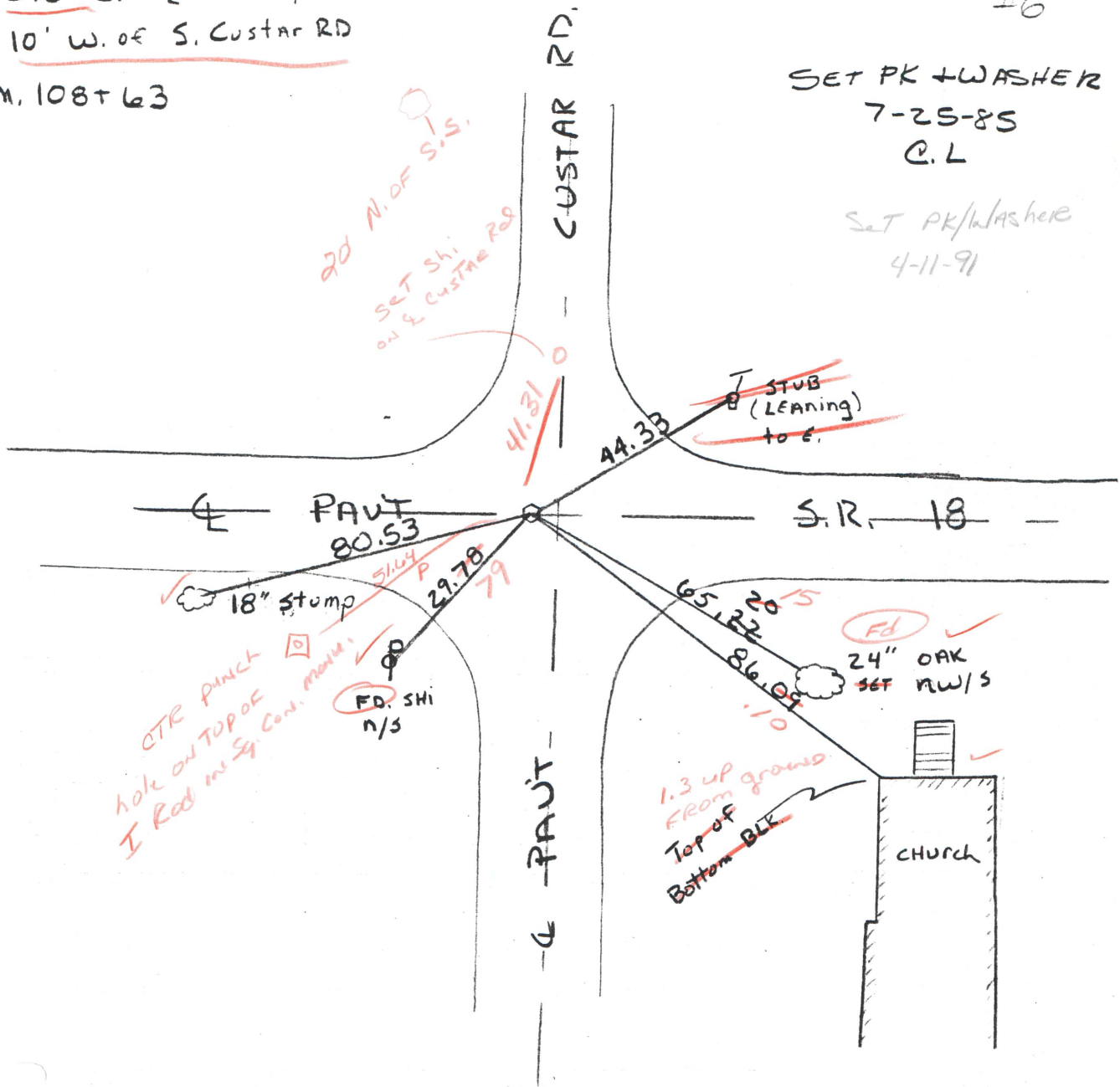
FD Lg R.R. SPIKE @ SURFACE
0.6' Lt & S.R. 18,
10' W. of S. CUSTAR RD

#6

S.L.M. 108+63

SET PK + WASHER
 7-25-85
 C.L

SET PK/WASHER
 4-11-91



ODOT. DISTRICT 2 SURVEY OFFICE

SHEET 6 OF

County WOOD S.R. 18

Date 6-17-74

Township JACKSON

Weather Pt. Cloudy

Section 20

Temp. 62°

T3N, R9E

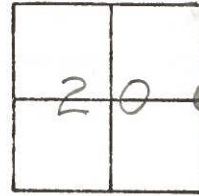
Personnel BURNSIDE

SMITH

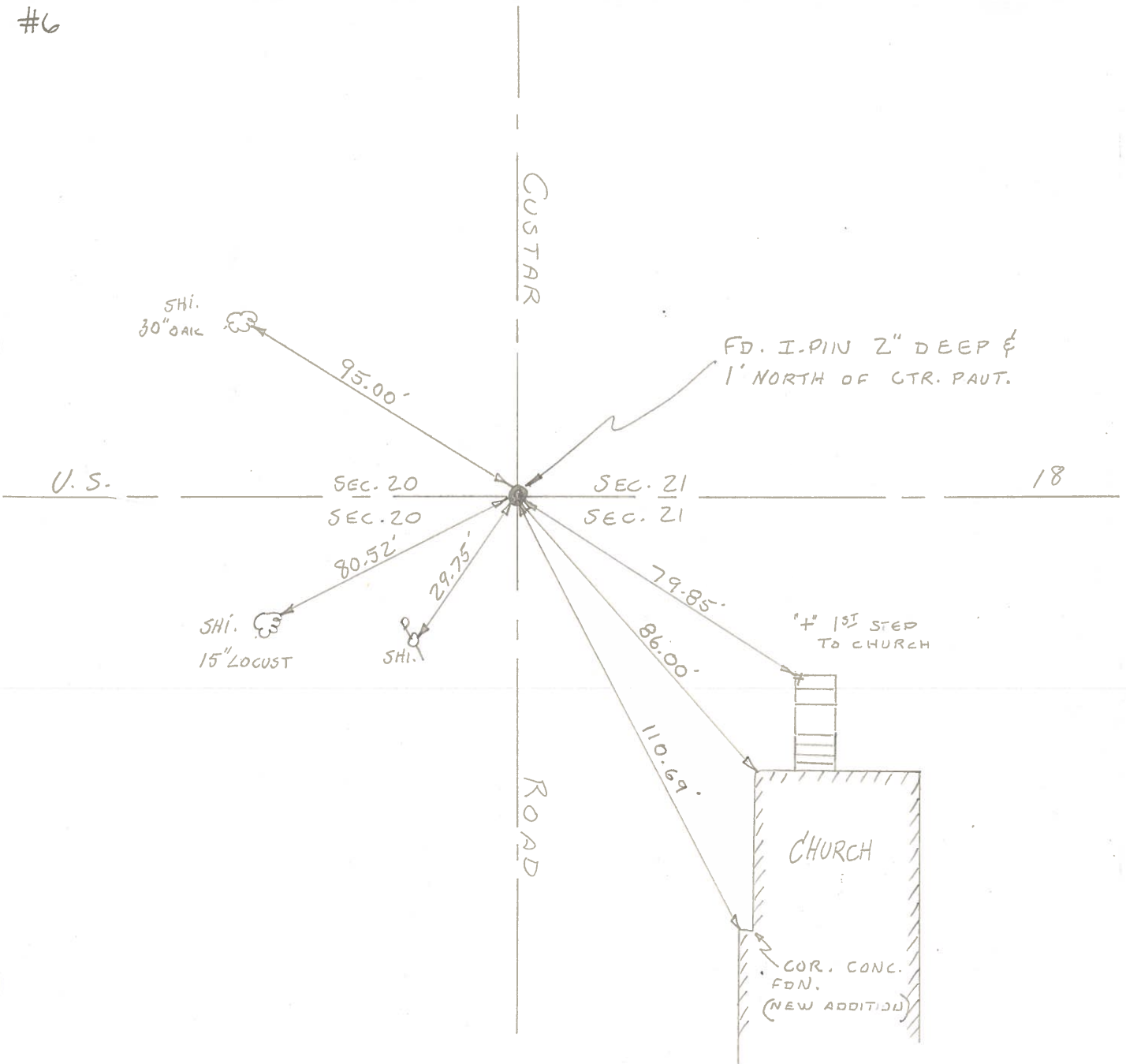
BOWERS

KIOWSKI

MEAD



#6



PERSONNEL TITLE PERSONNEL TITLE

BURNSIDE.
SMITH
BOWERS
HOLCOMBE

COUNTY WOOD DATE 12-28-70

S. R. #18 WEATHER CLEAR

SEC. HENRY Co. LINE EAST TEMP. +26°

DESCRIPTION LEFT CENTER LINE RIGHT JOB NO.

