

O.D.O.T. DISTRICT 2 SURVEY OFFICE

PERSONNEL

REFERENCE NO. 1A

SHEET 2 OF 13

NOTES R. LUMBREZER

DATE 06/28/11

ROUTE US 20 & SR 795

H.C. R. LUMBREZER

WEATHER SUNNY

COUNTY WOOD

R.C. E. FINGER

TEMP. 80° F

TOWNSHIP PERRYSBURG

SECTION 6

T 4 N R 11 E

TYPE MONUMENT MAG NAIL & WASHER SET

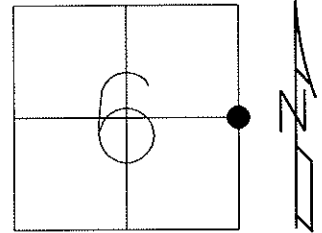
ON SURFACE - ~~BELOW~~ ON

~~LEFT~~ - Q PAV'T - ~~RIGHT~~ 2.6' E. of Q ELM ST.

TO EDGE PAVEMENT

S.L.M. 6+59.89

Grid: Northing: 691023.398 Easting: 1660425.580



SET SM. RR SPK
08/16/88 - MB

SET MAG NAIL & SHINER
08/17/11 - RJL

FND "X" CUT TOP OF
SE BOLT OF SIGNAL
LIGHT POLE BASE

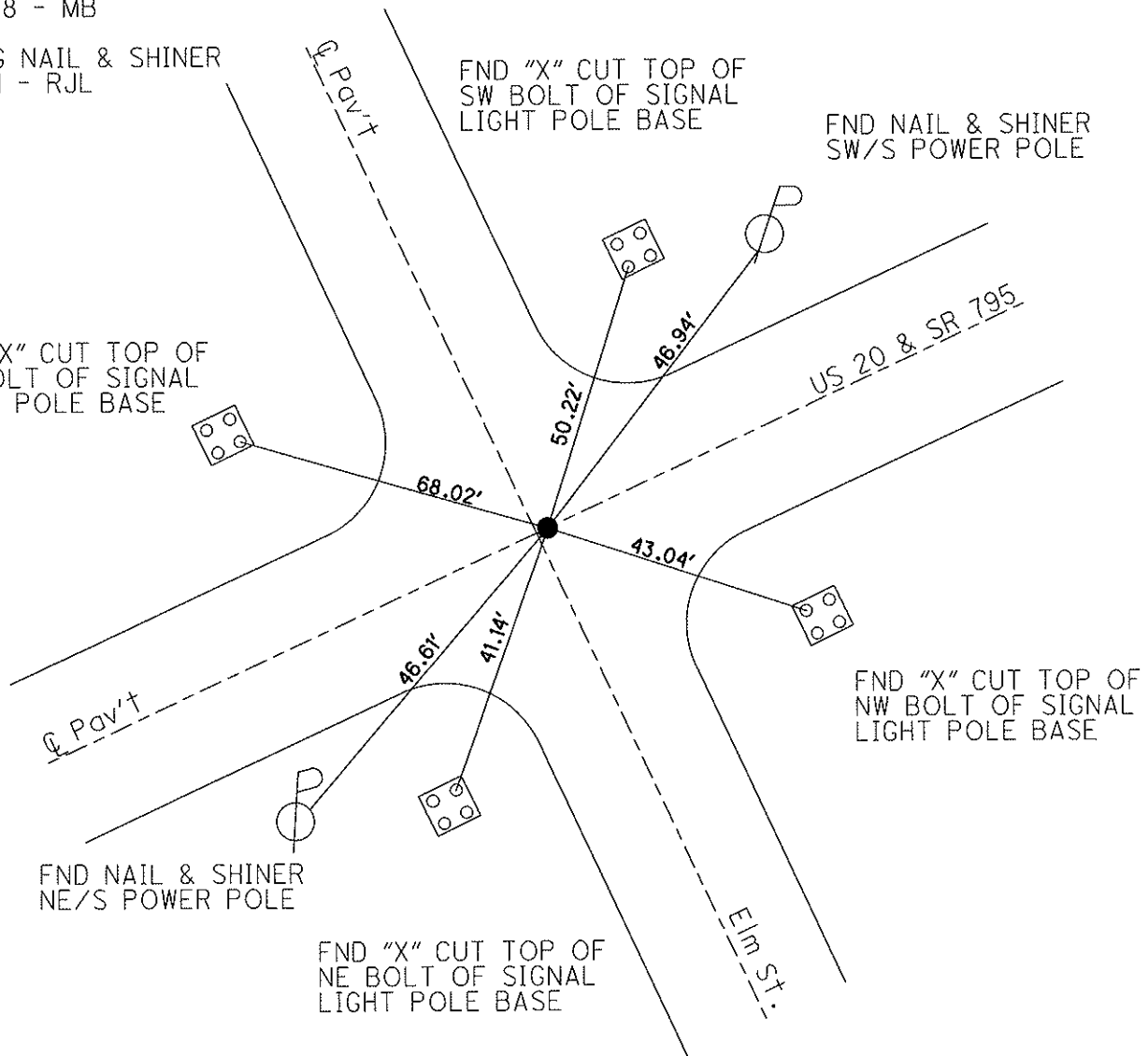
FND "X" CUT TOP OF
SW BOLT OF SIGNAL
LIGHT POLE BASE

FND NAIL & SHINER
SW/S POWER POLE

FND NAIL & SHINER
NE/S POWER POLE

FND "X" CUT TOP OF
NE BOLT OF SIGNAL
LIGHT POLE BASE

FND "X" CUT TOP OF
NW BOLT OF SIGNAL
LIGHT POLE BASE



O.D.O.T. DISTRICT 2 SURVEY OFFICE

PERSONNEL

REFERENCE NO. _____

SHEET _____ OF _____

NOTES BARWISEL

H.C. Reed

DATE 5-4-88

ROUTE U.S. 20 & SR 795

R.C. Loehcke

WEATHER SUNNY

COUNTY WOOD

HOFFMAN

TEMP. +55°

TOWNSHIP Perrysburg

SECTION _____

T _____ R _____

TYPE MONUMENT Lg RR Spk

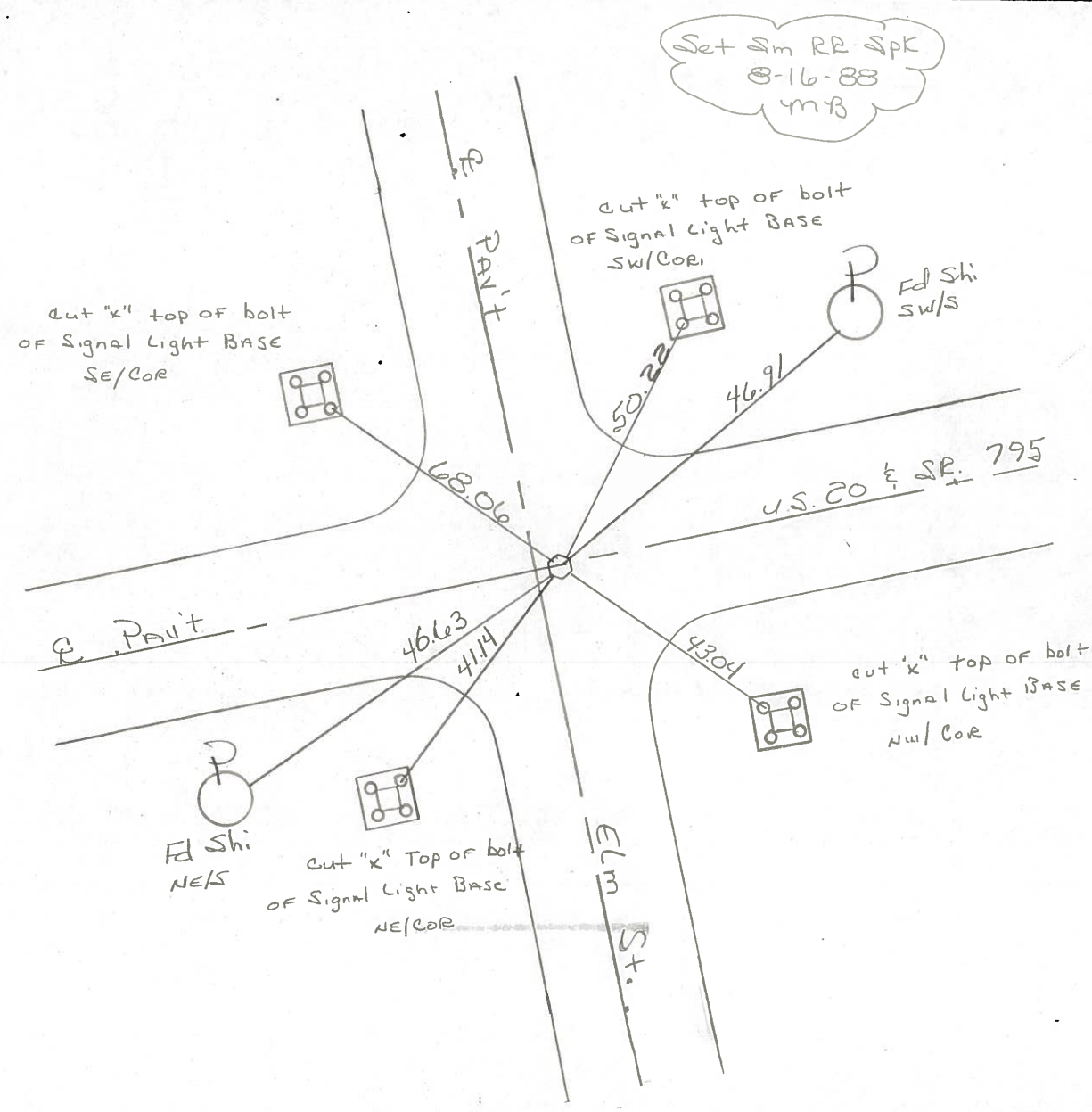
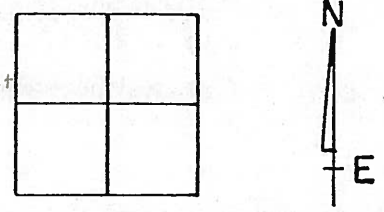
1-A

ON SURFACE - BELOW 2"

LEFT - & PAV'T. - RIGHT OF SR. 795 - 2.6 East of E Elm St

- TO - EDGE PAVEMENT

S.L.M. 80+40



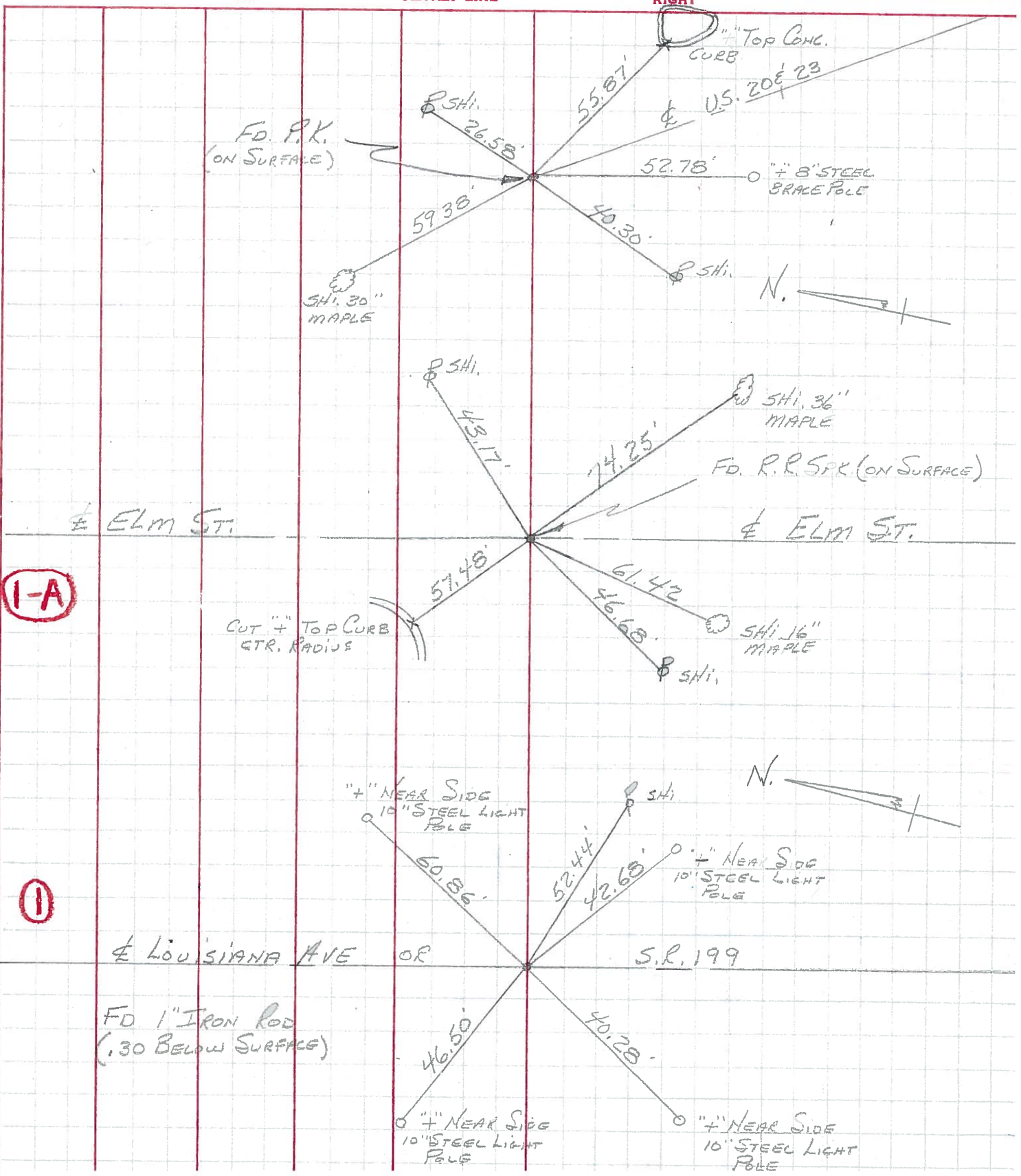
PERSONNEL TITLE PERSONNEL TITLE
 BURNSIDE _____
 SMITH _____
 HOFFMAN _____

COUNTY WOOD DATE 2-26-70

S. R. 795 WEATHER CLEAR

SEC. PERRYSBURG CORP. TEMP. +20°

DESCRIPTION CONTROL TIES (INDIANA AVE)
 LEFT CENTER LINE RIGHT JOB NO. _____



(1-A)

(1)