

O.D.O.T. DISTRICT 2 SURVEY OFFICE

PERSONNEL

REFERENCE NO. 1B

SHEET 3 OF 13

NOTES R. LUMBREZER

DATE 06/28/11

ROUTE US 20 & SR 795

H.C. R. LUMBREZER

WEATHER SUNNY

COUNTY WOOD

R.C. E. FINGER

TEMP. .80° F

TOWNSHIP PERRYSBURG

SECTION 5

T 4 N R 11 E

TYPE MONUMENT MAG NAIL & WASHER SET

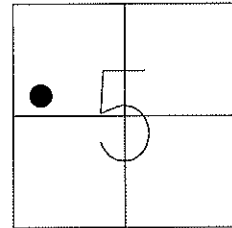
ON SURFACE - ~~BELOW~~ ON

~~LEFT~~ - Q PAV'T - ~~RIGHT~~ ON

TO EDGE PAVEMENT

S.L.M. 12+04.29

Grid: Northing: 691259.090 Easting: 1660916.287



FND PK NAIL
05/04/88 - MB

REESTABLISHED
WITH EXISTING REF.
06/28/11 - RJL

SET MAG NAIL & SHINER
08/17/11 - RJL

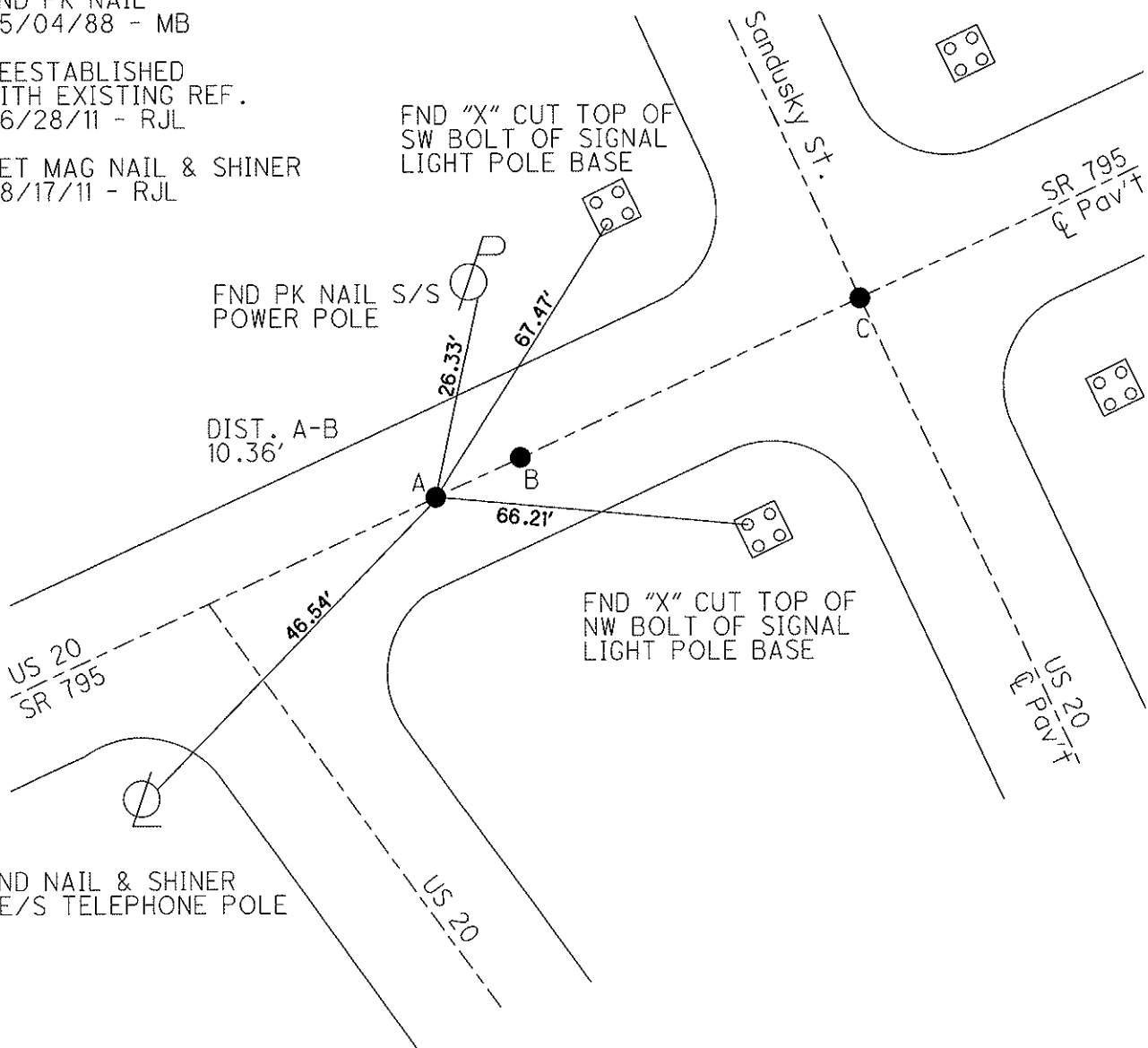
FND "X" CUT TOP OF
SW BOLT OF SIGNAL
LIGHT POLE BASE

FND PK NAIL S/S
POWER POLE

DIST. A-B
10.36'

FND "X" CUT TOP OF
NW BOLT OF SIGNAL
LIGHT POLE BASE

FND NAIL & SHINER
NE/S TELEPHONE POLE



O.D.O.T. DISTRICT 2 SURVEY OFFICE

PERSONNEL

REFERENCE NO. _____

SHEET _____ OF _____

NOTES BARNHISEL

H.C. Reed

DATE 5-4-88

ROUTE U.S. 20 & SR 795

R.C. Loehrke

WEATHER SUNNY

COUNTY Wood

HOFFMAN

TEMP. +55°

TOWNSHIP Perryburg

SECTION _____

T _____ R _____

TYPE MONUMENT PT A P.K. NAIL PT B Lg RE SPK

ON SURFACE - BELOW yes

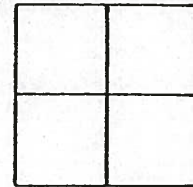
LEFT - C PAV'T. - RIGHT yes

222 TO RT EDGE PAVEMENT CURB

S.L.M. 85+85

1-B

1-C



PT. "A" is 31.5 EAST OF U.S. 20/SOUTH

Set P.K.'s & Washers
8-16-88
mrb

