

O.D.O.T. DISTRICT 2 SURVEY OFFICE

PERSONNEL

REFERENCE NO. 1D

SHEET 5 OF 13

NOTES R. LUMBREZER

DATE 06/28/11

ROUTE US 20 & SR 795

H.C. R. LUMBREZER

WEATHER SUNNY

COUNTY WOOD

R.C. E. FINGER

TEMP. 80° F

TOWNSHIP PERRYSBURG

SECTION 5

T 4 N R 11 E

TYPE MONUMENT MAG NAIL & WASHER SET

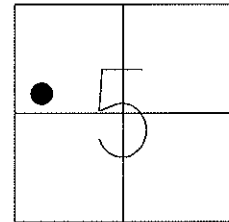
ON SURFACE - ~~BELOW~~ ON _____

~~LEFT~~ - C PAV'T - ~~RIGHT~~ ON _____

_____ TO _____ EDGE PAVEMENT

S.L.M. 13+04.16

Grid: Northing: 691302.299 Easting: 1661006.296



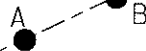
FND RR SPIKE
02/18/10 - KPM

SET MAG NAIL & SHINER
08/17/11 - RJL

FND "X" CUT TOP OF
SW BOLT OF SIGNAL
LIGHT POLE BASE

FND "X" CUT TOP OF
SE BOLT OF SIGNAL
LIGHT POLE BASE

DIST. A-B
10.36'

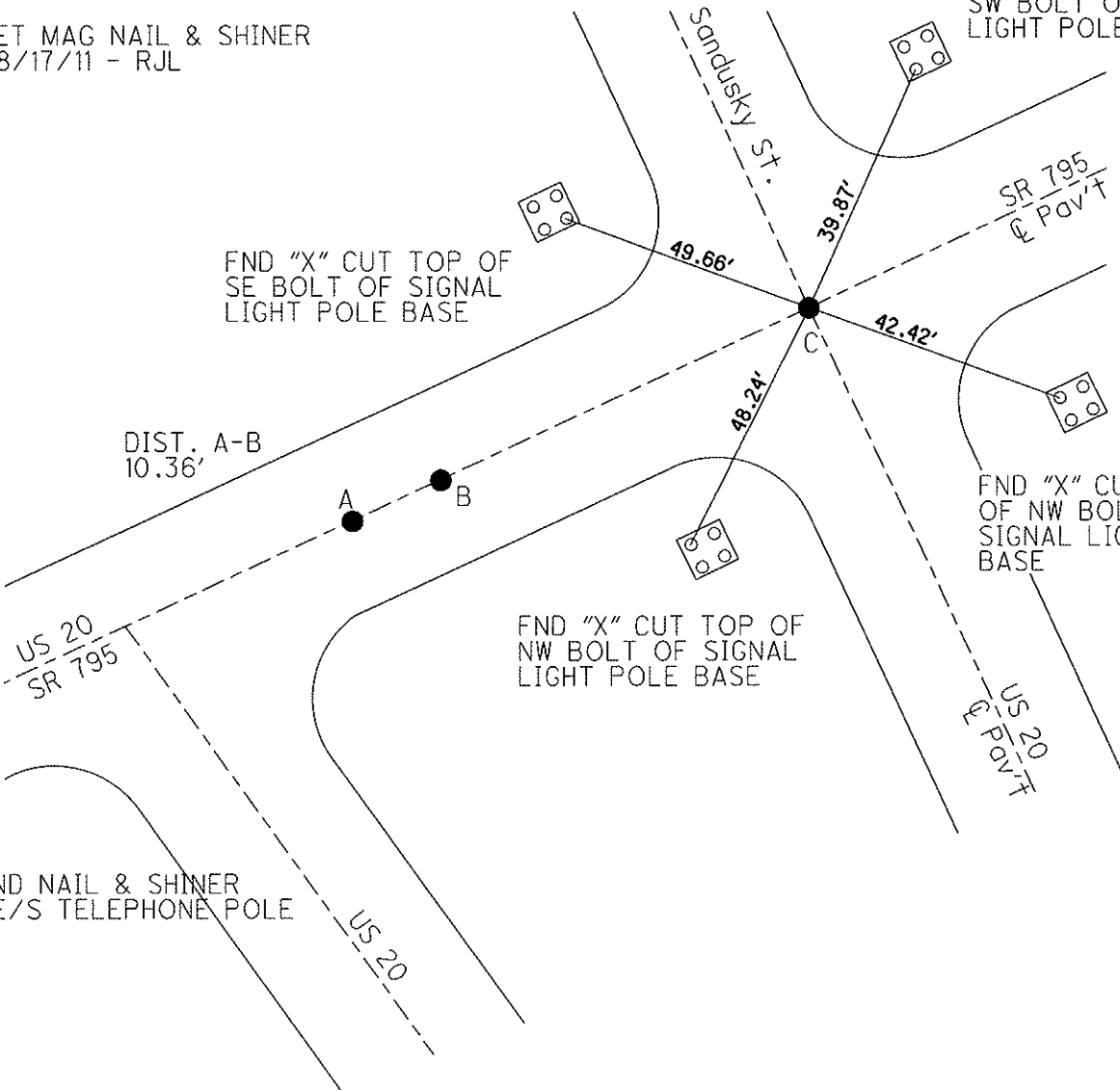


48.24'

FND "X" CUT TOP OF
NW BOLT OF SIGNAL
LIGHT POLE BASE

FND "X" CUT TOP
OF NW BOLT OF
SIGNAL LIGHT POLE
BASE

FND NAIL & SHINER
NE/S TELEPHONE POLE



O.D.O.T. DISTRICT 2 SURVEY OFFICE

PERSONNEL _____

REFERENCE NO. _____

SHEET _____ OF _____

NOTES BARNHISEL

H.C. Reed

DATE 5-4-88

ROUTE SR. 795

R.C. Loehke

WEATHER Sunny

COUNTY Wood

HOFFMAN

TEMP. +55°

TOWNSHIP Perrysburg

SECTION _____

T _____ R _____

TYPE MONUMENT Lg RR Spk

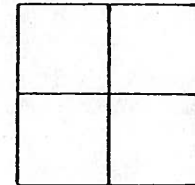
~~ON SURFACE~~ - BELOW 2"

~~LEFT - C~~ PAV'T. - RIGHT yes

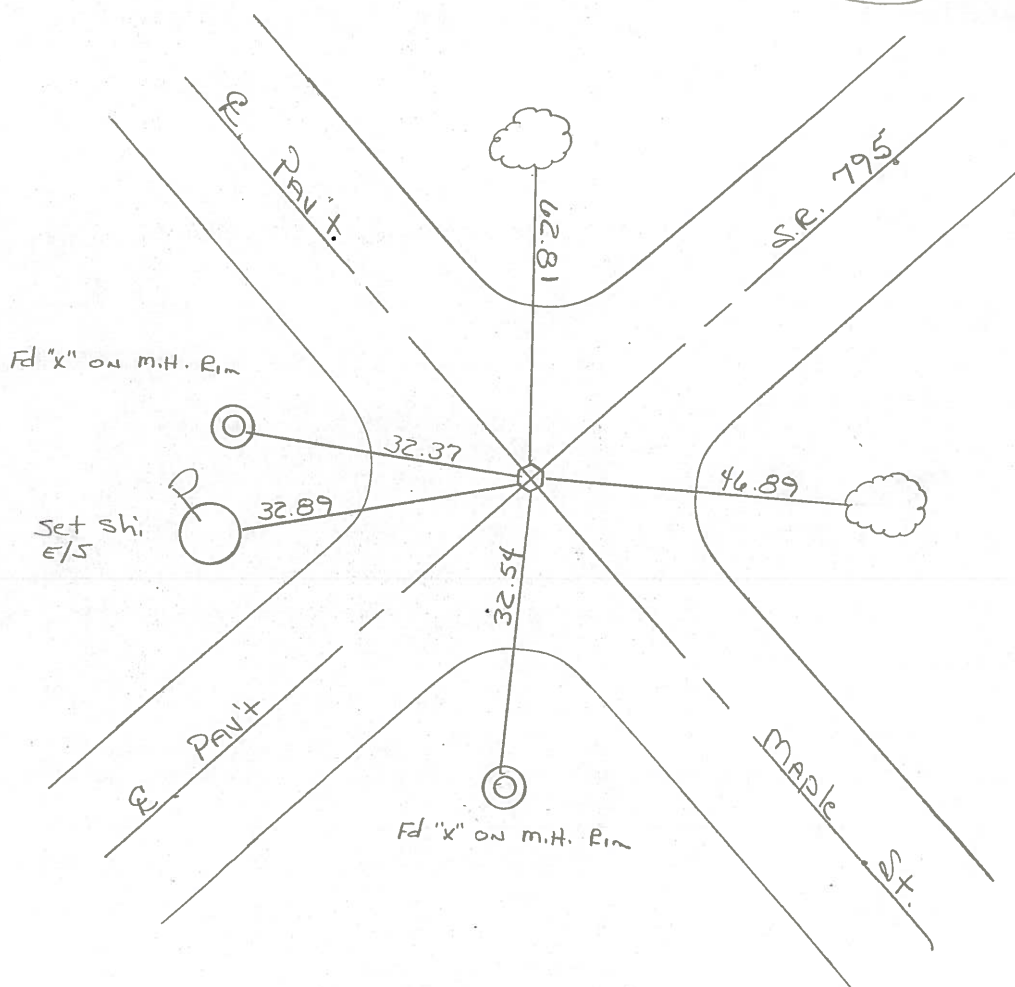
~~TO~~ - EDGE PAVEMENT

S.L.M. 19 + 55

1-E



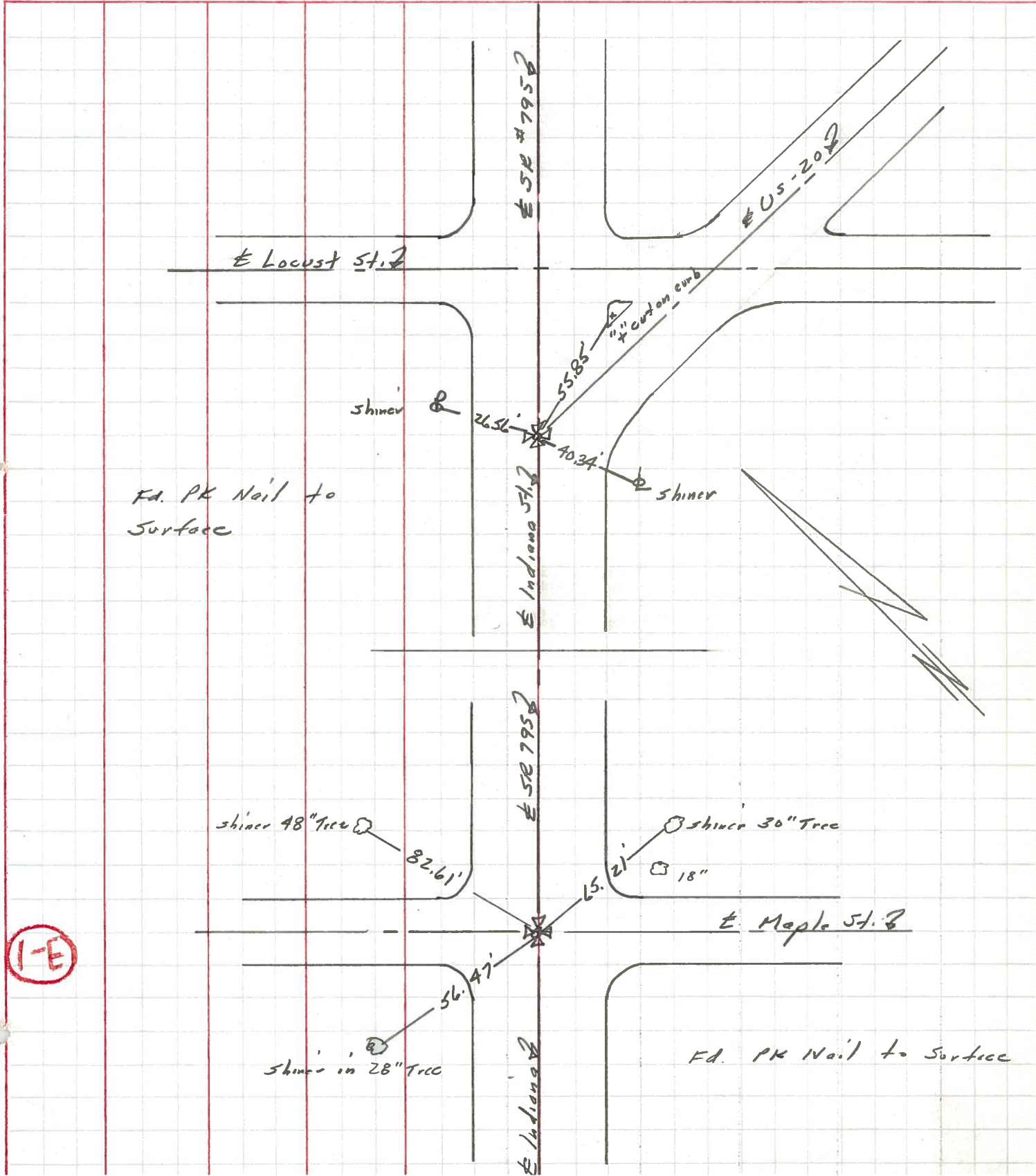
Set Sm RR Spk
8-16-88
MB



PERSONNEL	TITLE	PERSONNEL	TITLE
Stone	Notes		
Schroder	H.C.		
Farr	P.C.		

COUNTY Wood DATE 13 Aug 71
 S. R. # 795 WEATHER Fair
 SEC. Perrysburg TEMP 74°

DESCRIPTION References to Control Points JOB NO. _____
 LEFT CENTER LINE RIGHT



PERSONNEL TITLE PERSONNEL TITLE

BURNSIDE
SMITH
HOFFMAN

COUNTY WOOD DATE 2-27-70

S. R. 795 WEATHER Cloudy

SEC. PERRYSBURG CORP. TEMP. +33°

DESCRIPTION CONTROL TIES (INDIANA AVE.) JOB NO.

