

O.D.O.T. DISTRICT 2 SURVEY OFFICE

PERSONNEL

REFERENCE NO. 1E

SHEET 6 OF 13

NOTES R. LUMBREZER

DATE 06/28/11

ROUTE SR 795

H.C. R. LUMBREZER

WEATHER SUNNY

COUNTY WOOD

R.C. E. FINGER

TEMP. 80° F

TOWNSHIP PERRYSBURG

SECTION 5

T 4 N R 11 E

TYPE MONUMENT MAG NAIL & WASHER SET

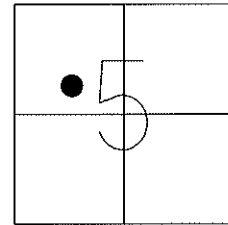
ON SURFACE - ~~BELOW~~

~~LEFT~~ - Q PAV'T - ~~RIGHT~~ BOTH

TO EDGE PAVEMENT

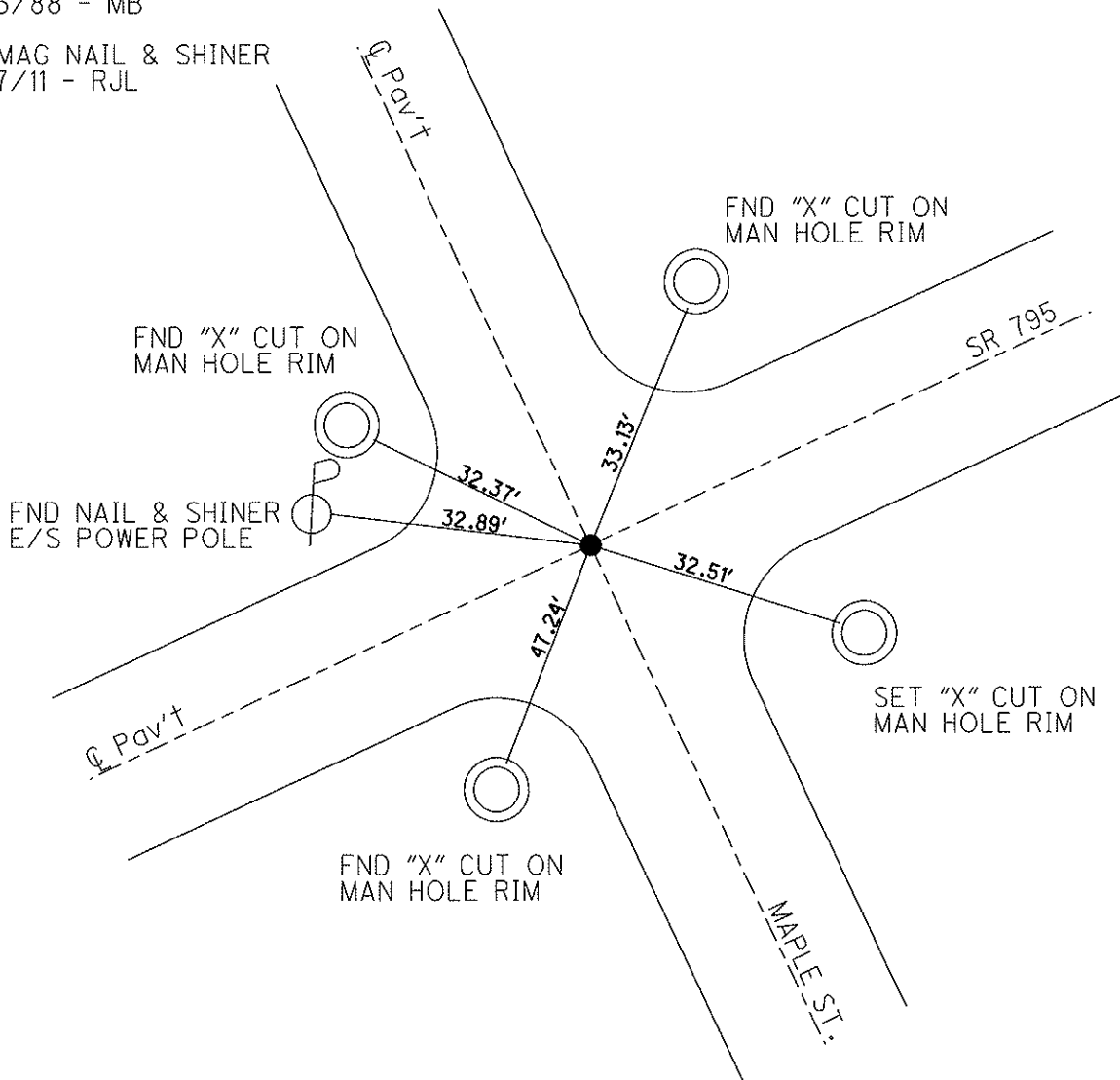
S.L.M. 19+47.87

Grid: Northing: 691580.675 Easting: 1661586.459



FND. SM. RR SPK  
08/16/88 - MB

SET MAG NAIL & SHINER  
08/17/11 - RJL



# O.D.O.T. DISTRICT 2 SURVEY OFFICE

PERSONNEL \_\_\_\_\_

REFERENCE NO. \_\_\_\_\_

SHEET \_\_\_\_\_ OF \_\_\_\_\_

NOTES BARNHISEL

H.C. Reed

DATE 5-4-88

ROUTE SR. 795

R.C. Loehke

WEATHER Sunny

COUNTY Wood

HOFFMAN

TEMP. +55°

TOWNSHIP Perrysburg

SECTION \_\_\_\_\_

T \_\_\_\_\_ R \_\_\_\_\_

TYPE MONUMENT Lg RR Spk

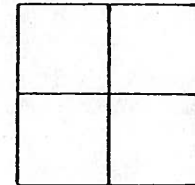
~~ON SURFACE~~ - BELOW 2"

LEFT - C PAV'T. - RIGHT yes

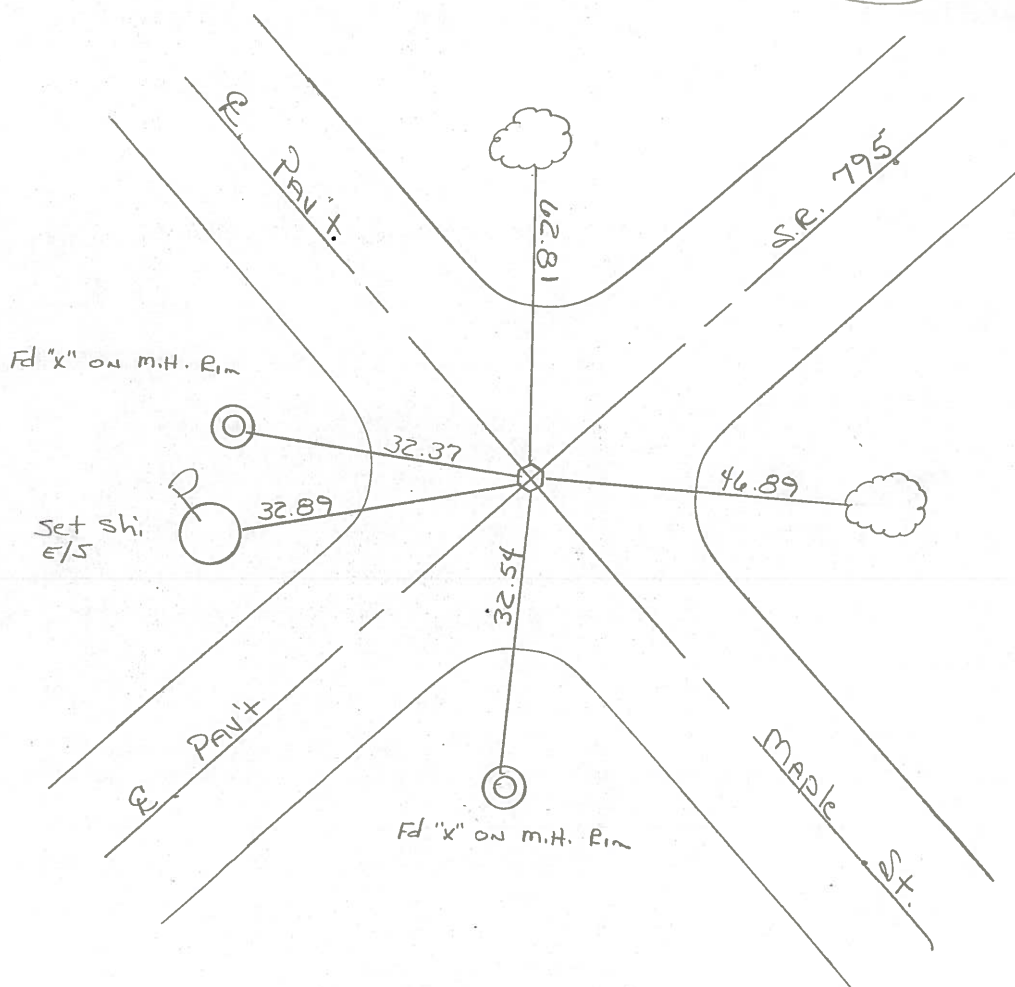
- TO - EDGE PAVEMENT

S.L.M. 19 + 55

1-E



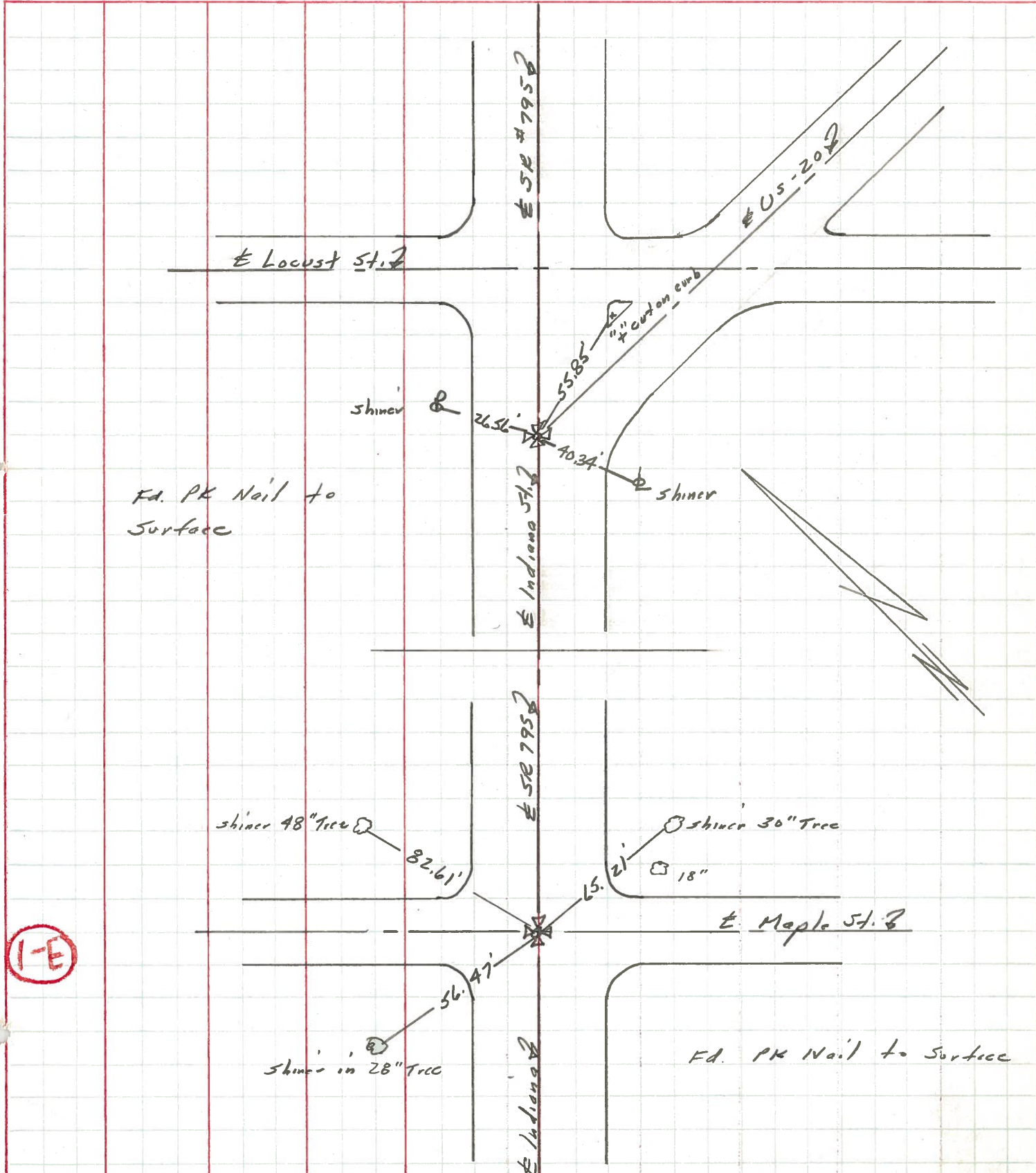
Set Sm RR Spk  
8-16-88  
MB



PERSONNEL	TITLE	PERSONNEL	TITLE
Stone	Notes		
Schroder	H.C.		
Farr	P.C.		

COUNTY Wood DATE 13 Aug 71  
 S. R. # 795 WEATHER Fair  
 SEC. Perrysburg TEMP 74°

DESCRIPTION References to Control Points JOB NO. \_\_\_\_\_



PERSONNEL TITLE PERSONNEL TITLE

BURNSIDE  
SMITH  
HOFFMAN

COUNTY WOOD DATE 2-27-70

S. R. 795 WEATHER Cloudy

SEC. PERRYSBURG CORP. TEMP. +33°

DESCRIPTION CONTROL TIES (INDIANIA AVE.) JOB NO.

