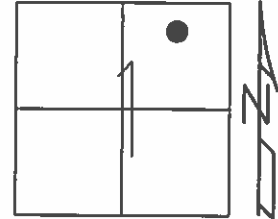


O.D.O.T. DISTRICT 2 SURVEY OFFICE (USE ONLY)

PERSONNEL _____ REFERENCE NO. 12 SHEET 6 OF 19

NOTES HUSS DATE 5/24/12 ROUTE SR 795
 H.C. HUSS WEATHER FAIR COUNTY WOOD
 R.C. CANTERBURY TEMP. 82° TOWNSHIP PERRYSBURG
 _____ SECTION 1
 _____ T 4

TYPE MONUMENT MON.BOX
 ON SURFACE - ~~BELOW~~ ON
 LEFT - ☉ PAV'T - RIGHT -
12' TO S EDGE PAVEMENT W.B.L.
 S.L.M. 264+75 ±



GRID: NORTHING: 692879.788 EASTING: 1685654.469

RECORD:
 FD MON.BOX
 W.B.L.
 12' TO N/EP
 8/17/71, I.S.
 FD MONBOX
 W/IPIN, MC
 GPS, REF12

