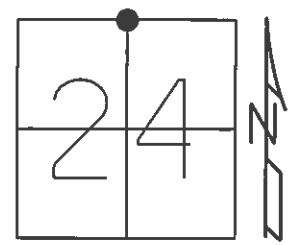


O.D.O.T. DISTRICT 2 SURVEY OFFICE (USE ONLY)

PERSONNEL	REFERENCE NO. <u>26 B</u>	SHEET <u>8</u> OF <u>11</u>
NOTES <u>HUSS</u>	DATE <u>4/19/12</u>	ROUTE <u>SR 795</u>
H.C. <u>CANTERBURY</u>	WEATHER <u>CLEAR</u>	COUNTY <u>WOOD</u>
R.C. <u>HUSS</u>	TEMP. <u>60°</u>	TOWNSHIP <u>LAKE</u>
		SECTION <u>24</u>
		T <u>7</u> N R <u>12</u> E

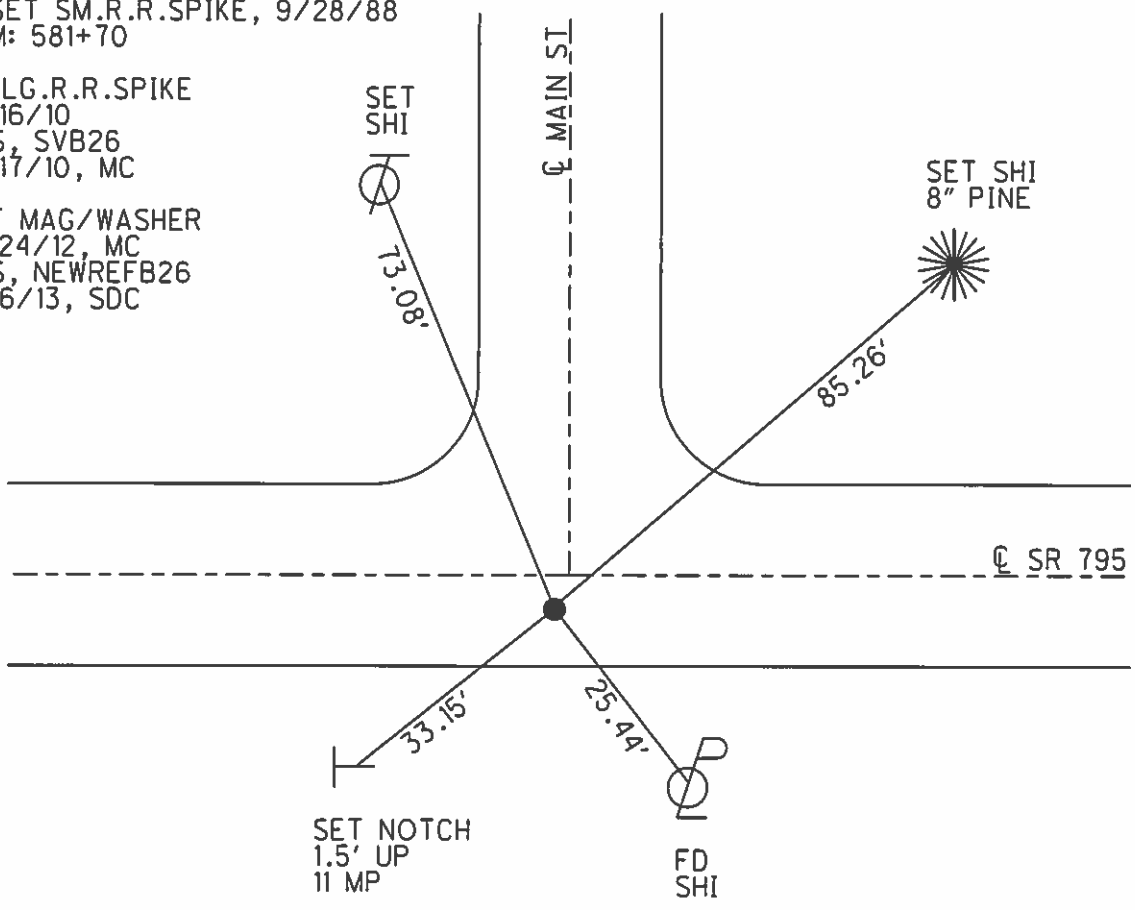
TYPE MONUMENT LG.R.R.SPIKE
 ON SURFACE - ~~BELOW~~ ON _____
~~LEFT~~ - Q PAV'T - RIGHT 3.0'
7.8' TO RT EDGE PAVEMENT
 S.L.M. 577+08.01
 Grid: Northing: 690654.572 Easting: 1715389.260



RECORD: 1988
 FD R.R.SPIKE, 7/14/88
 RESET SM.R.R.SPIKE, 9/28/88
 SLM: 581+70

FD LG.R.R.SPIKE
 12/16/10
 GPS, SVB26
 12/17/10, MC

SET MAG/WASHER
 12/24/12, MC
 GPS, NEWREFB26
 4/16/13, SDC



O.D.O.T. DISTRICT 2 SURVEY OFFICE

PERSONNEL _____

REFERENCE NO. 26-B

SHEET _____ OF _____

NOTES LOEHRKE

H.C. Reed

R.C. BARNHISEL

DATE 7-14-88

WEATHER Clear Breezy

TEMP. +90

ROUTE S.R. 795

COUNTY WOOD

TOWNSHIP LAKE

SECTION 24

T 7 N R 12 E

TYPE MONUMENT Lg RR Spike

ON SURFACE - BELOW 4" Below

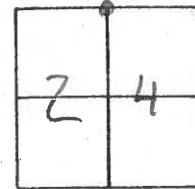
LEFT - & PART - RIGHT 2.3

6.7 TO RT EDGE PAVEMENT

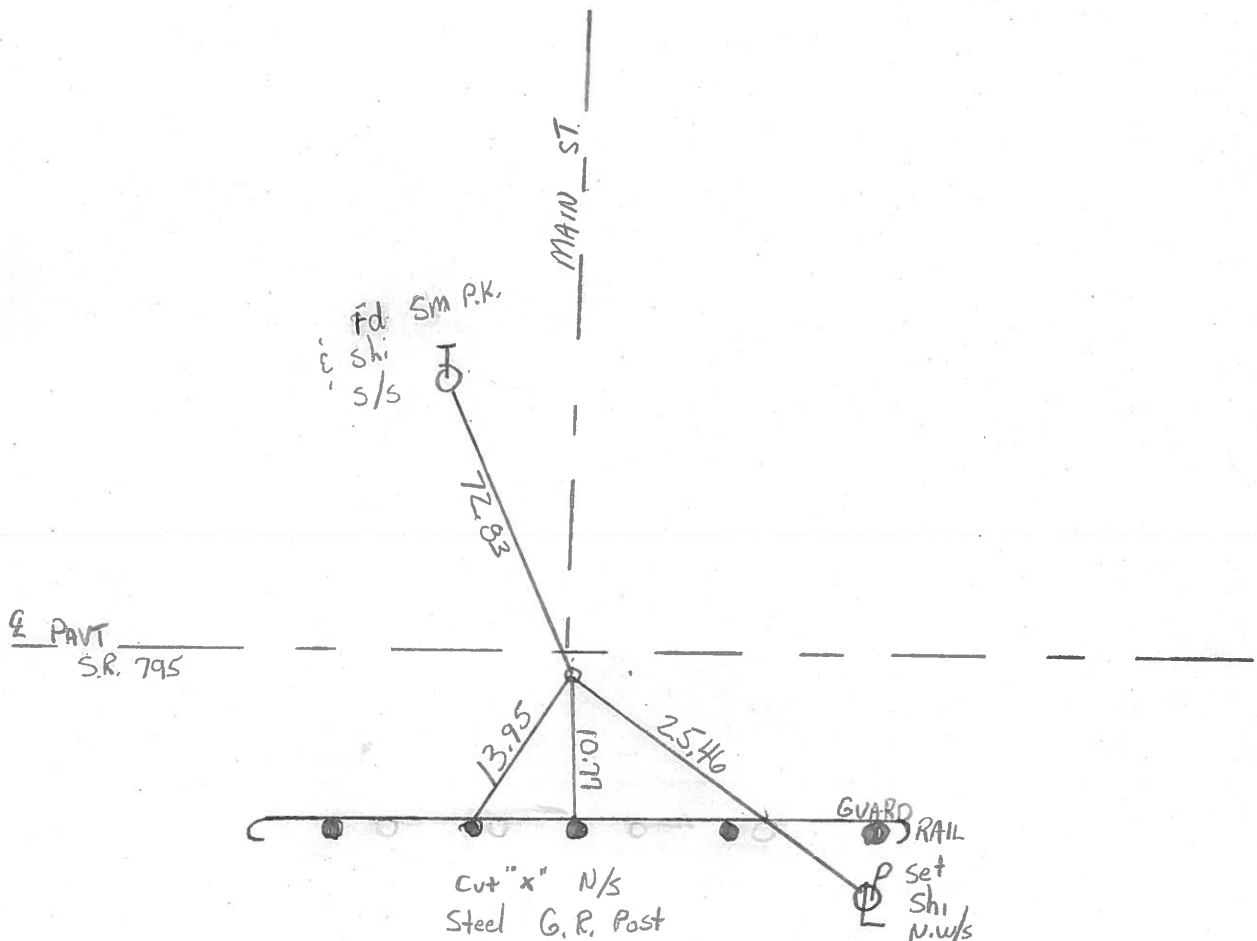
S.L.M. 581+70

Reset SMALL RR
Spike 9-20-88
C.L.

1.0 W & MAIN ST.



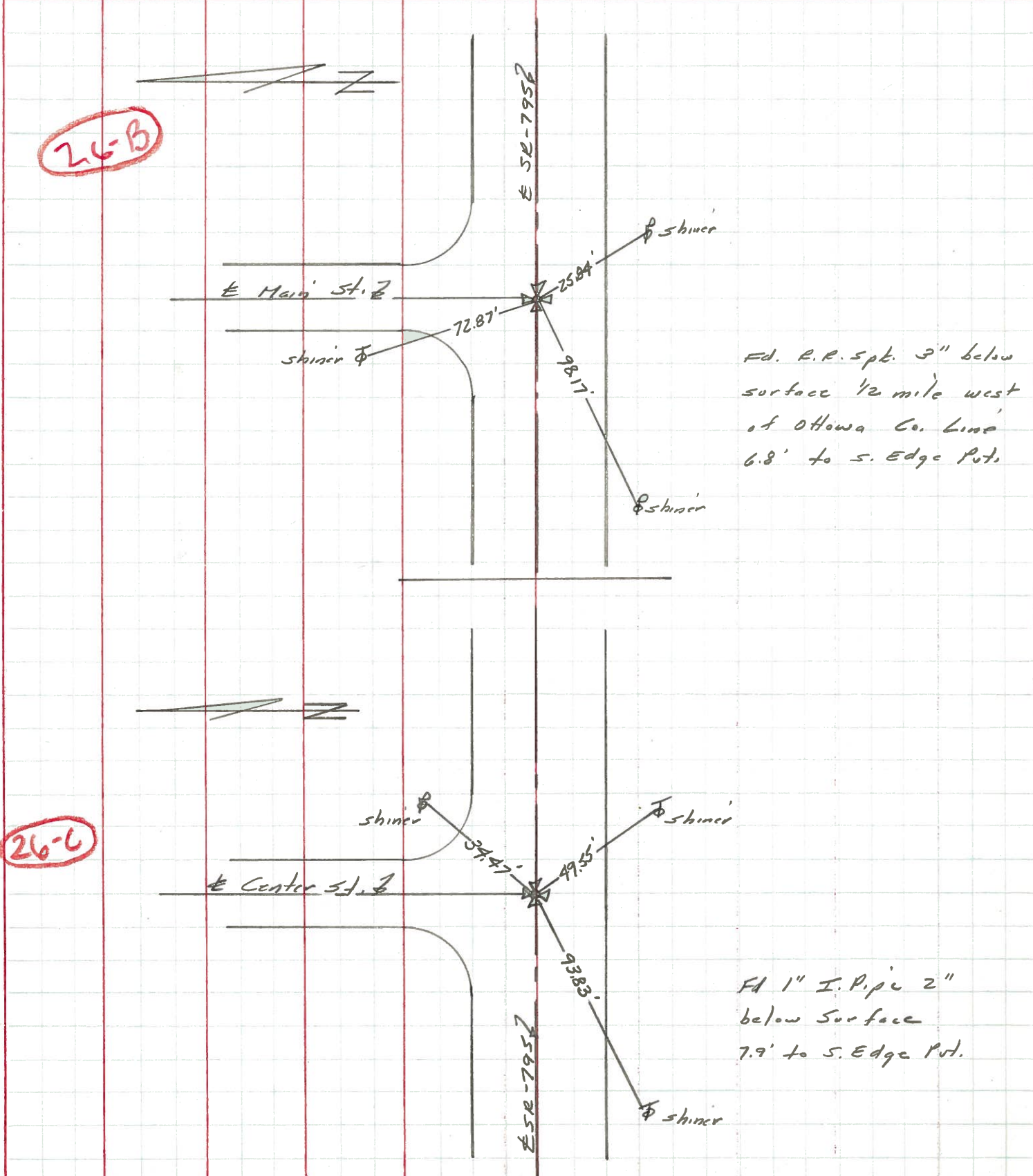
MILLBURY



PERSONNEL	TITLE	PERSONNEL	TITLE
Stone	Notes		
Michalak	H.C.		
Farr	P.C.		

COUNTY Wood DATE 13 Sept. 71
 S. R. 795 WEATHER Cool
 SEC. Millbury TEMP. 68°

DESCRIPTION References to Control Points JOB NO. _____
 LEFT CENTER LINE RIGHT



Fd. R.R. spt. 3" below surface 1/2 mile west of Ottawa Co. Line 6.8' to S. Edge Pnt.

Fd 1" I. Pipe 2" below surface 7.9' to S. Edge Pnt.