

O.D.O.T. DISTRICT 2 SURVEY OFFICE (USE ONLY)

PERSONNEL

REFERENCE NO. 26 C

SHEET 9 OF 11

NOTES HUSS

DATE 4/19/12

ROUTE SR 795

H.C. CANTERBURY

WEATHER CLEAR

COUNTY WOOD

R.C. HUSS

TEMP. 62°

TOWNSHIP LAKE

SECTION 24

T 7 N R 12 E

TYPE MONUMENT SM.R.R.SPIKE

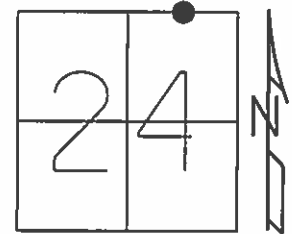
ON SURFACE - ~~BELOW~~ ON

~~LEFT~~ - Q PAV'T - RIGHT 2.5'

7.8' TO S. EDGE PAVEMENT

S.L.M. 584+79.46

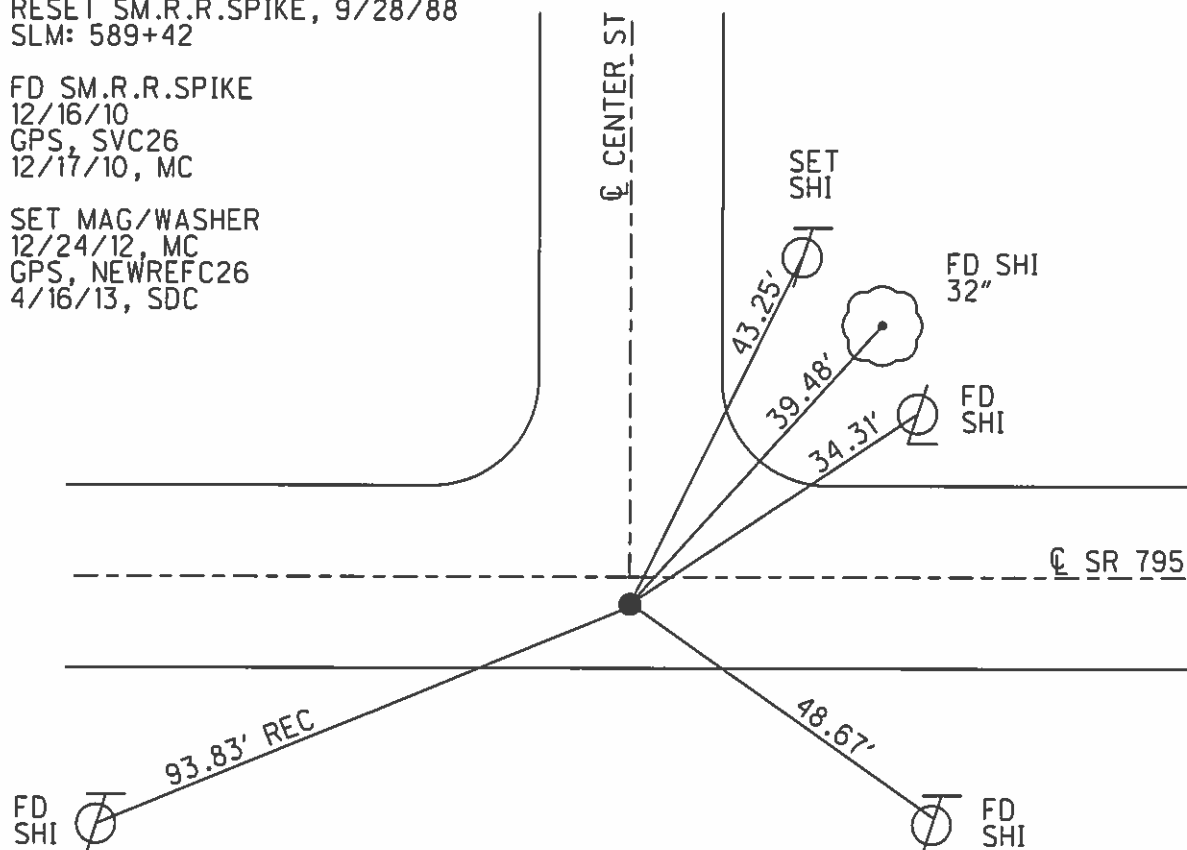
Grid: Northing: 690623.491 Easting: 1716160.167



RECORD: 1988
 FD 1" IPIPE, 7/14/88
 RESET SM.R.R.SPIKE, 9/28/88
 SLM: 589+42

FD SM.R.R.SPIKE
 12/16/10
 GPS, SVC26
 12/17/10, MC

SET MAG/WASHER
 12/24/12, MC
 GPS, NEWREFC26
 4/16/13, SDC



O.D.O.T. DISTRICT 2 SURVEY OFFICE

PERSONNEL

REFERENCE NO. 26-C

SHEET _____ OF _____

NOTES LOEHRKE

H.C. Reed

R.C. BARNISER

DATE 7-14-88

WEATHER Clear Breezy

TEMP. +90

ROUTE SR 795

COUNTY WOOD

TOWNSHIP LAKE

SECTION 24

T 7 N R 12 E

TYPE MONUMENT 1" PIPE

ON SURFACE - BELOW 4" BELOW

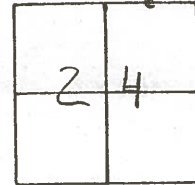
LEFT - ☉ PAV'T. - RIGHT ☉

7.2 TO SOUTH EDGE PAVEMENT

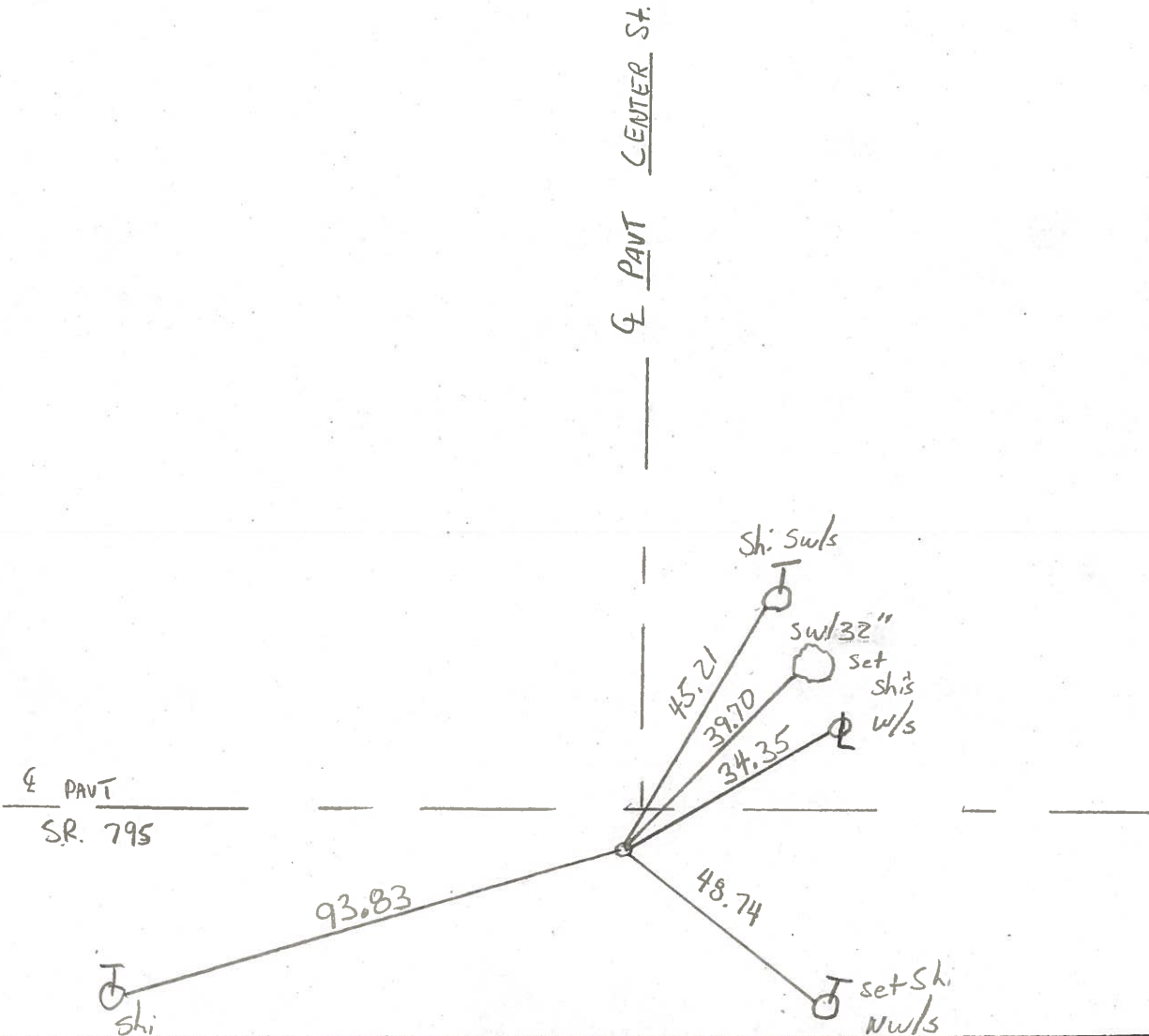
S.L.M. 589 +42

Reset 5m RR Spike
9-20-88 ☉

1.5w/☉
center St.



MILLBURY



PERSONNEL	TITLE	PERSONNEL	TITLE	COUNTY	DATE
Stone	Notes			Wood	13 Sept. 71
Michalak	H.C.			S. R. 795	WEATHER Cool
Farr	R.C.			SEC. Millbury	TEMP. 68°
DESCRIPTION				References to Control Points	JOB NO.
	LEFT	CENTER LINE	RIGHT		

