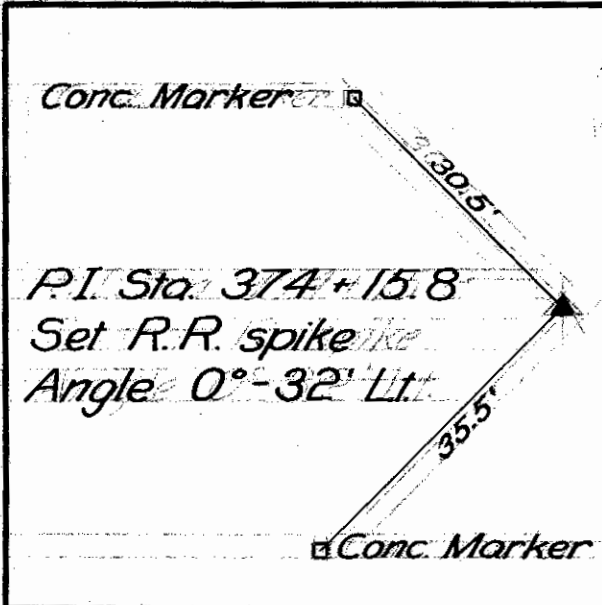


Scanned July 1977



I. Set R.R. Spike  
to Conc. Marker S.W. 20.5  
" " N.W. 20.5  
Angle 0° 32' Lt.

WOOD COUNTY  
S.H. 286 SEC. A-1  
R/W PLANS

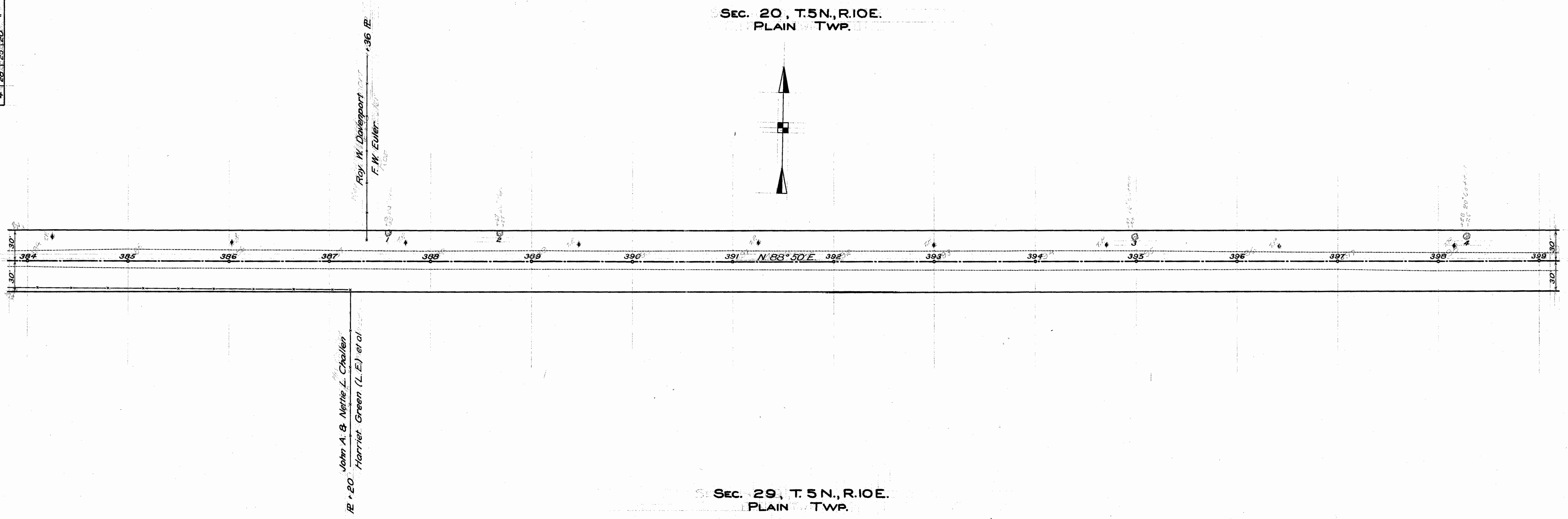
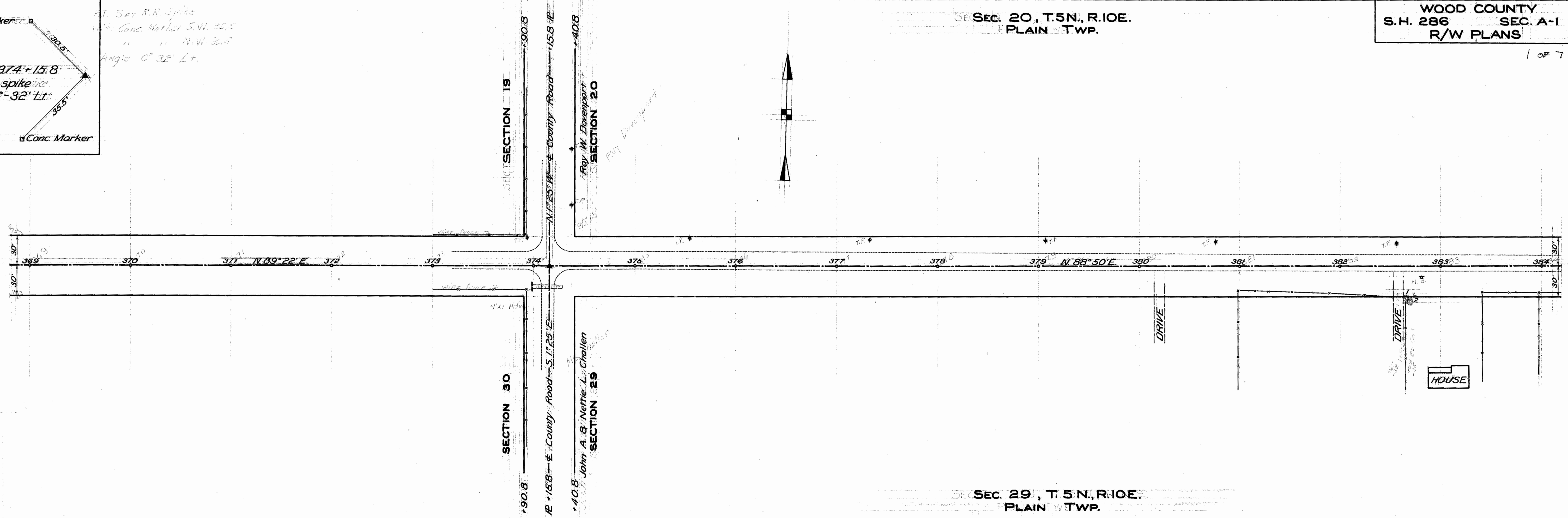
SEC. 20, T.5N., R.10E.  
PLAIN TWP.

SEC. 29, T.5N., R.10E.  
PLAIN TWP.

SEC. 20, T.5N., R.10E.  
PLAIN TWP.

SEC. 29, T.5N., R.10E.  
PLAIN TWP.

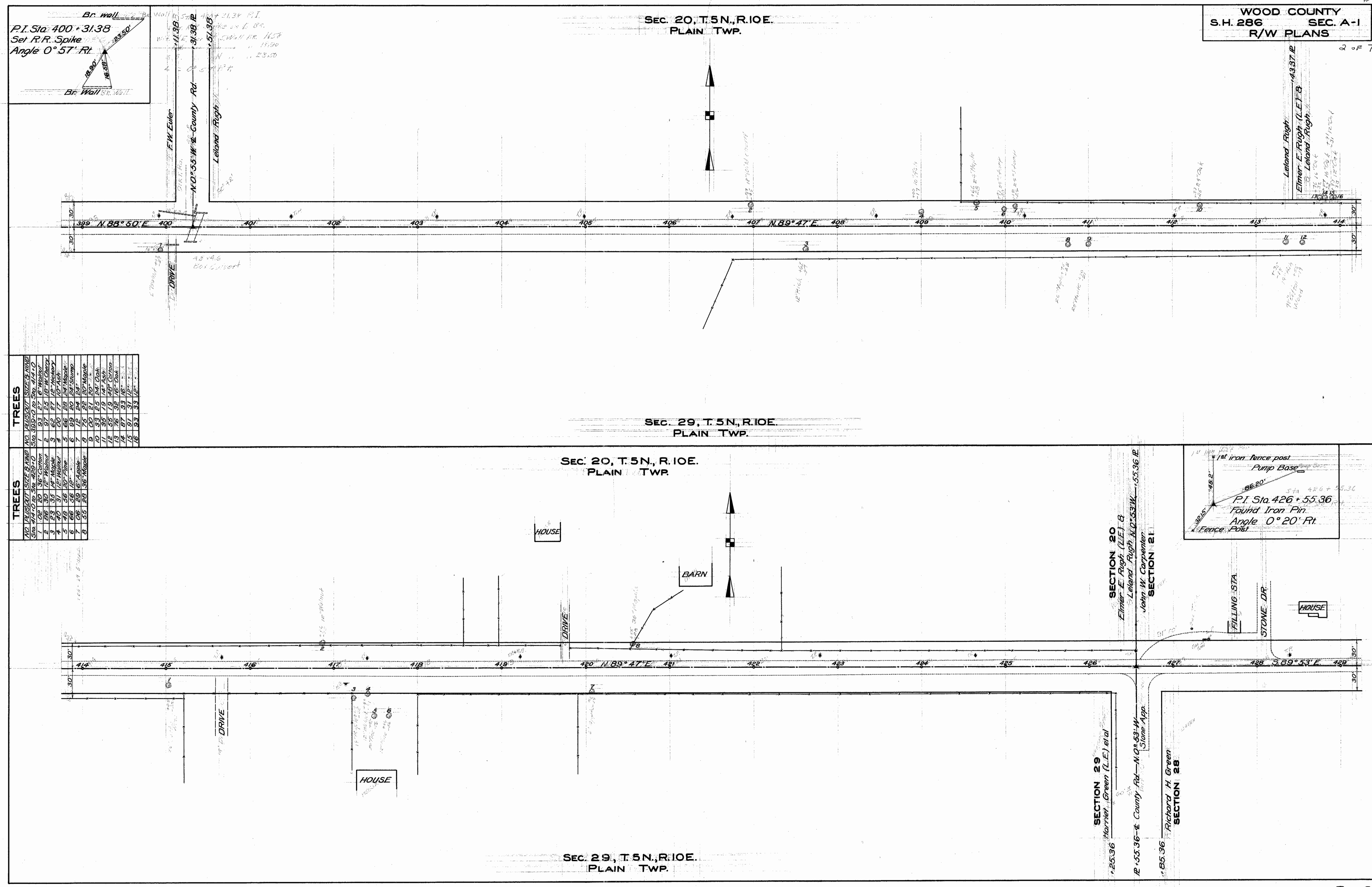
TREES		TREES	
NO.	PLANT OUT	NO.	PLANT OUT
1	50' 30" 10' 50'	1	50' 30" 10' 50'
2	50' 30" 10' 50'	2	50' 30" 10' 50'
3	50' 30" 10' 50'	3	50' 30" 10' 50'
4	50' 30" 10' 50'	4	50' 30" 10' 50'



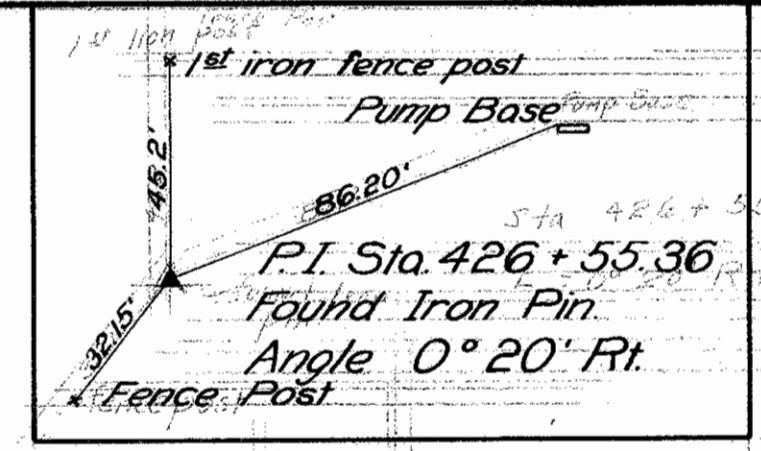
Road # D-31

FOR ANY QUESTIONS PLEASE CONTACT ODOT DISTRICT 2 REAL ESTATE AT 419-353-8131

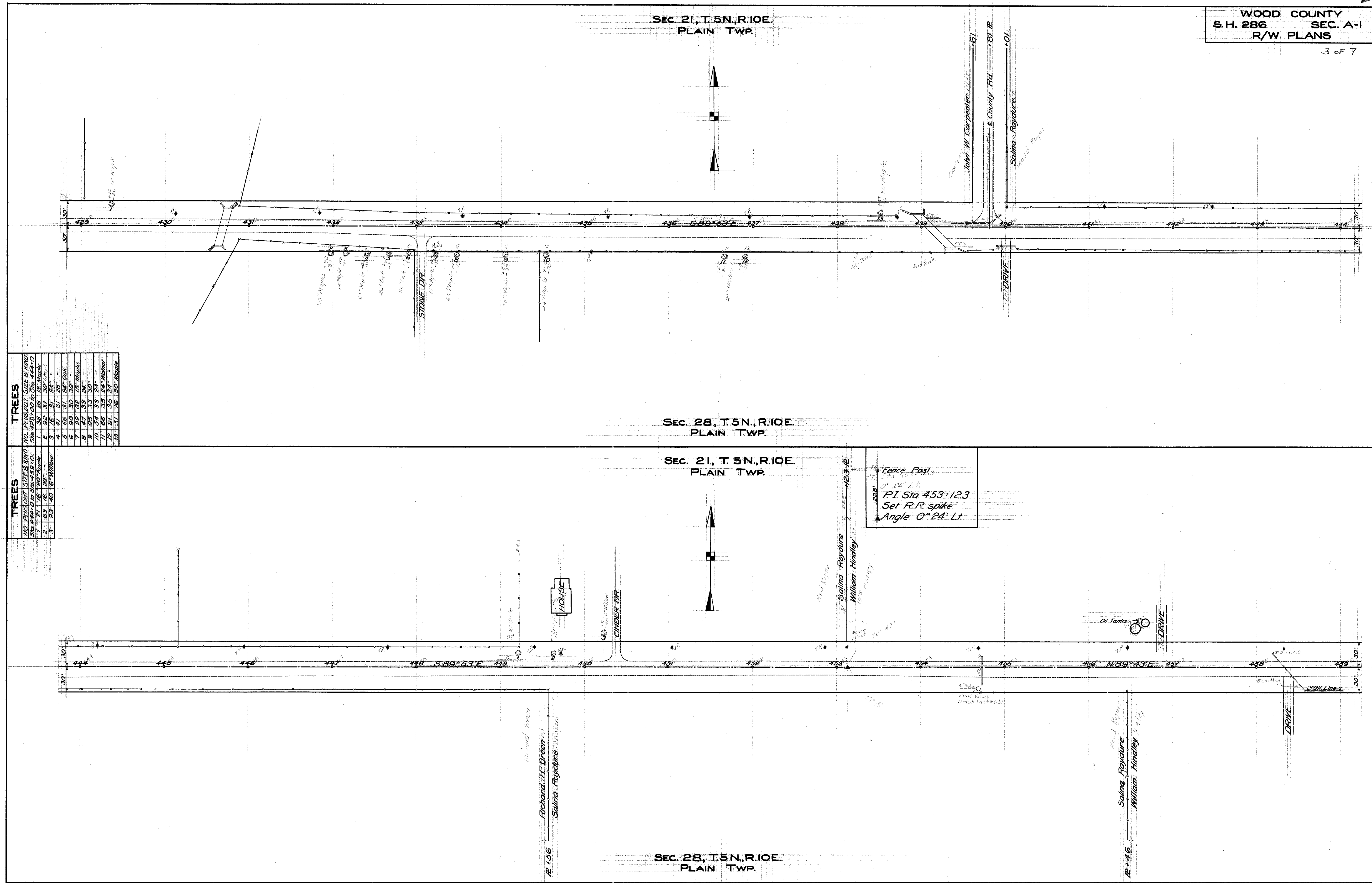
Scanned July 1997



TREES		TREES	
NO.	PLANT	NO.	PLANT
1	12" DBH	10	33' 25' 24" Oak
2	12" DBH	11	35' 19' 14" Ash
3	12" DBH	12	55' 19' 48" Cotton
4	12" DBH	13	32' 16" Oak
5	12" DBH	14	31' 12" Oak
6	12" DBH	15	31' 12" Oak
7	12" DBH	16	33' 12" Oak
8	12" DBH	17	33' 12" Oak
9	12" DBH	18	33' 12" Oak
10	12" DBH	19	33' 12" Oak
11	12" DBH	20	33' 12" Oak
12	12" DBH	21	33' 12" Oak
13	12" DBH	22	33' 12" Oak
14	12" DBH	23	33' 12" Oak
15	12" DBH	24	33' 12" Oak
16	12" DBH	25	33' 12" Oak
17	12" DBH	26	33' 12" Oak
18	12" DBH	27	33' 12" Oak
19	12" DBH	28	33' 12" Oak
20	12" DBH	29	33' 12" Oak
21	12" DBH	30	33' 12" Oak
22	12" DBH	31	33' 12" Oak
23	12" DBH	32	33' 12" Oak
24	12" DBH	33	33' 12" Oak
25	12" DBH	34	33' 12" Oak
26	12" DBH	35	33' 12" Oak
27	12" DBH	36	33' 12" Oak
28	12" DBH	37	33' 12" Oak
29	12" DBH	38	33' 12" Oak
30	12" DBH	39	33' 12" Oak
31	12" DBH	40	33' 12" Oak
32	12" DBH	41	33' 12" Oak
33	12" DBH	42	33' 12" Oak
34	12" DBH	43	33' 12" Oak
35	12" DBH	44	33' 12" Oak
36	12" DBH	45	33' 12" Oak
37	12" DBH	46	33' 12" Oak
38	12" DBH	47	33' 12" Oak
39	12" DBH	48	33' 12" Oak
40	12" DBH	49	33' 12" Oak
41	12" DBH	50	33' 12" Oak
42	12" DBH	51	33' 12" Oak
43	12" DBH	52	33' 12" Oak
44	12" DBH	53	33' 12" Oak
45	12" DBH	54	33' 12" Oak
46	12" DBH	55	33' 12" Oak
47	12" DBH	56	33' 12" Oak
48	12" DBH	57	33' 12" Oak
49	12" DBH	58	33' 12" Oak
50	12" DBH	59	33' 12" Oak
51	12" DBH	60	33' 12" Oak
52	12" DBH	61	33' 12" Oak
53	12" DBH	62	33' 12" Oak
54	12" DBH	63	33' 12" Oak
55	12" DBH	64	33' 12" Oak
56	12" DBH	65	33' 12" Oak
57	12" DBH	66	33' 12" Oak
58	12" DBH	67	33' 12" Oak
59	12" DBH	68	33' 12" Oak
60	12" DBH	69	33' 12" Oak
61	12" DBH	70	33' 12" Oak
62	12" DBH	71	33' 12" Oak
63	12" DBH	72	33' 12" Oak
64	12" DBH	73	33' 12" Oak
65	12" DBH	74	33' 12" Oak
66	12" DBH	75	33' 12" Oak
67	12" DBH	76	33' 12" Oak
68	12" DBH	77	33' 12" Oak
69	12" DBH	78	33' 12" Oak
70	12" DBH	79	33' 12" Oak
71	12" DBH	80	33' 12" Oak
72	12" DBH	81	33' 12" Oak
73	12" DBH	82	33' 12" Oak
74	12" DBH	83	33' 12" Oak
75	12" DBH	84	33' 12" Oak
76	12" DBH	85	33' 12" Oak
77	12" DBH	86	33' 12" Oak
78	12" DBH	87	33' 12" Oak
79	12" DBH	88	33' 12" Oak
80	12" DBH	89	33' 12" Oak
81	12" DBH	90	33' 12" Oak
82	12" DBH	91	33' 12" Oak
83	12" DBH	92	33' 12" Oak
84	12" DBH	93	33' 12" Oak
85	12" DBH	94	33' 12" Oak
86	12" DBH	95	33' 12" Oak
87	12" DBH	96	33' 12" Oak
88	12" DBH	97	33' 12" Oak
89	12" DBH	98	33' 12" Oak
90	12" DBH	99	33' 12" Oak
91	12" DBH	100	33' 12" Oak



Scanned  
July 1997



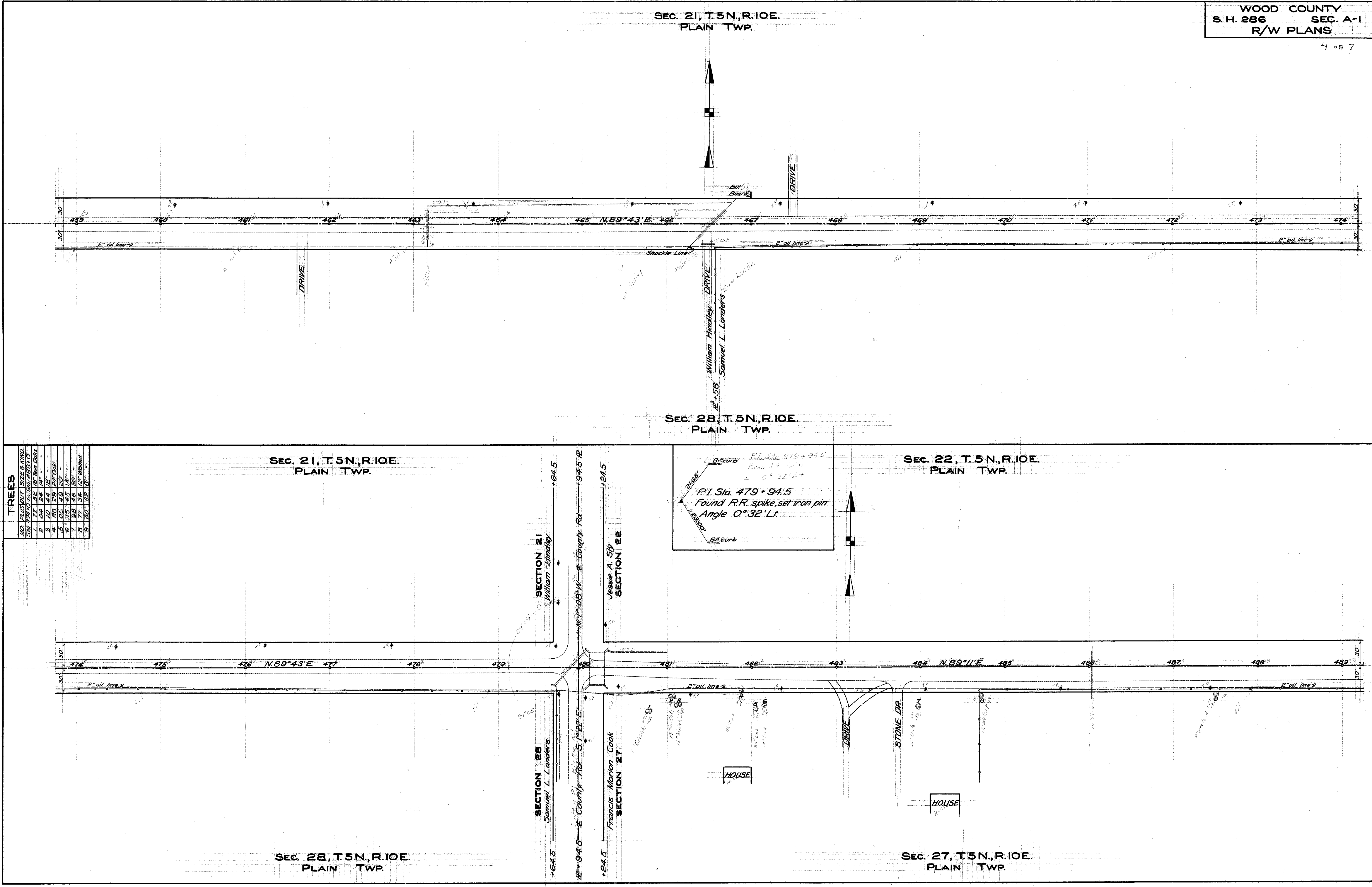
**TREES**

NO.	PLANT	SIZE @ KIND
1	14"	12"
2	63	16
3	23	40
4	41	37
5	66	37
6	90	30
7	47	35
8	47	35
9	23	33
10	34	33
11	66	35
12	91	35
13	31	28

**TREES**

NO.	PLANT	SIZE @ KIND
1	14"	12"
2	63	16
3	23	40
4	41	37
5	66	37
6	90	30
7	47	35
8	47	35
9	23	33
10	34	33
11	66	35
12	91	35
13	31	28

Scanned  
July 14/17

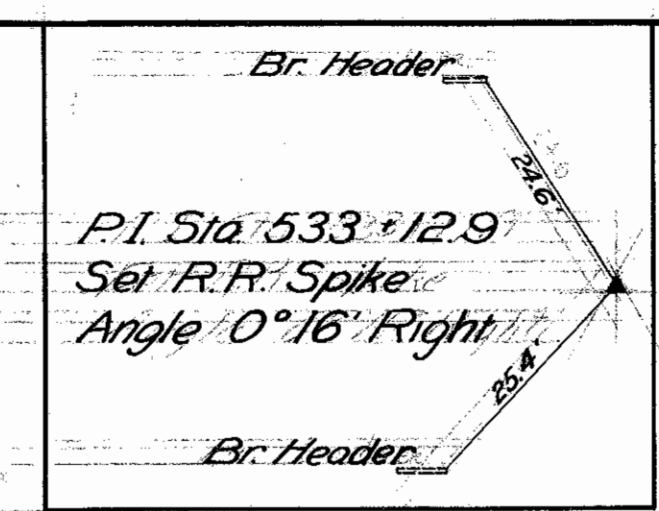
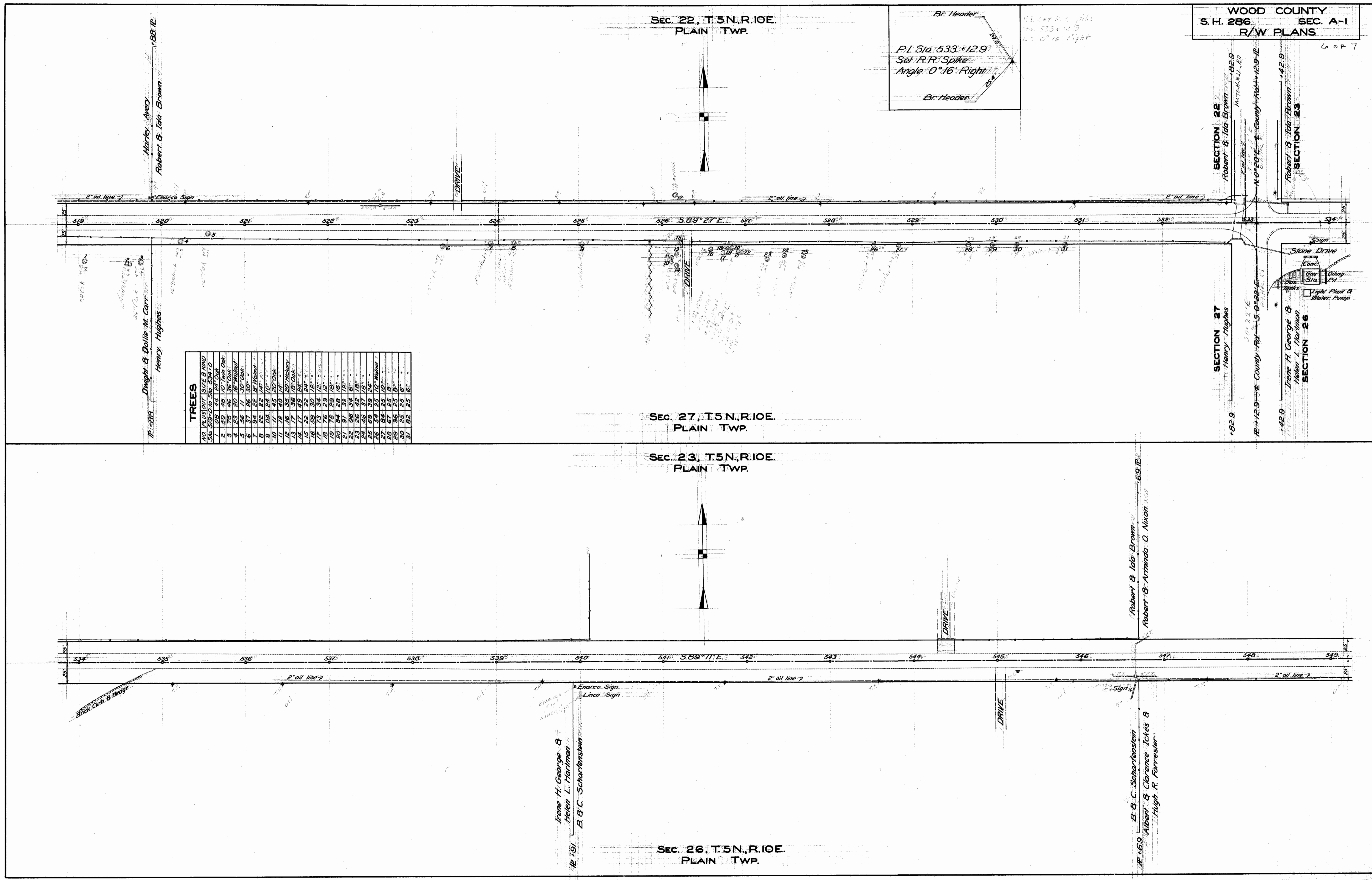


**TREES**

NO.	PLUS/OUT	SIZE	BRAND
1	77	52	1/2" 1/2" 1/2" 1/2"
2	04	24	1/2" 1/2" 1/2" 1/2"
3	10	24	1/2" 1/2" 1/2" 1/2"
4	08	19	1/2" 1/2" 1/2" 1/2"
5	13	14	1/2" 1/2" 1/2" 1/2"
6	13	14	1/2" 1/2" 1/2" 1/2"
7	08	14	1/2" 1/2" 1/2" 1/2"
8	11	14	1/2" 1/2" 1/2" 1/2"
9	50	32	1/2" 1/2" 1/2" 1/2"



50 Covered  
5/14/1007



PI Sta: 533+12.9  
Set R.R. Spike  
Angle 0°16' Right

**TREES**

NO.	PLANT	SIZE	B. KIND
1	3/8" DB	10"	SH. OAK
2	3/8" DB	10"	SH. OAK
3	3/8" DB	10"	SH. OAK
4	2 1/2"	16"	WALNUT
5	3 1/2"	11"	3/4" OAK
6	3 1/2"	8"	3/4" OAK
7	3 1/2"	8"	3/4" OAK
8	3 1/2"	8"	3/4" OAK
9	3 1/2"	10"	3/4" OAK
10	1 1/2"	45"	20" OAK
11	1 1/2"	40"	4"
12	1 1/2"	35"	20" WALNUT
13	1 1/2"	36"	18" OAK
14	1 1/2"	49"	24"
15	1 1/2"	30"	12"
16	1 1/2"	34"	12"
17	1 1/2"	29"	12"
18	1 1/2"	29"	12"
19	1 1/2"	29"	12"
20	1 1/2"	29"	12"
21	1 1/2"	32"	12"
22	1 1/2"	32"	12"
23	1 1/2"	45"	18"
24	1 1/2"	46"	17"
25	1 1/2"	39"	24"
26	1 1/2"	25"	10" WALNUT
27	1 1/2"	25"	10"
28	1 1/2"	25"	10"
29	1 1/2"	25"	10"
30	1 1/2"	25"	10"
31	1 1/2"	25"	10"
32	1 1/2"	25"	10"
33	1 1/2"	25"	10"



Scanned July 14, 1997

Iron Fence Post  
P.I. Sta. 560 +13.75  
Set R.R. Spike  
Angle 1° 50' Left

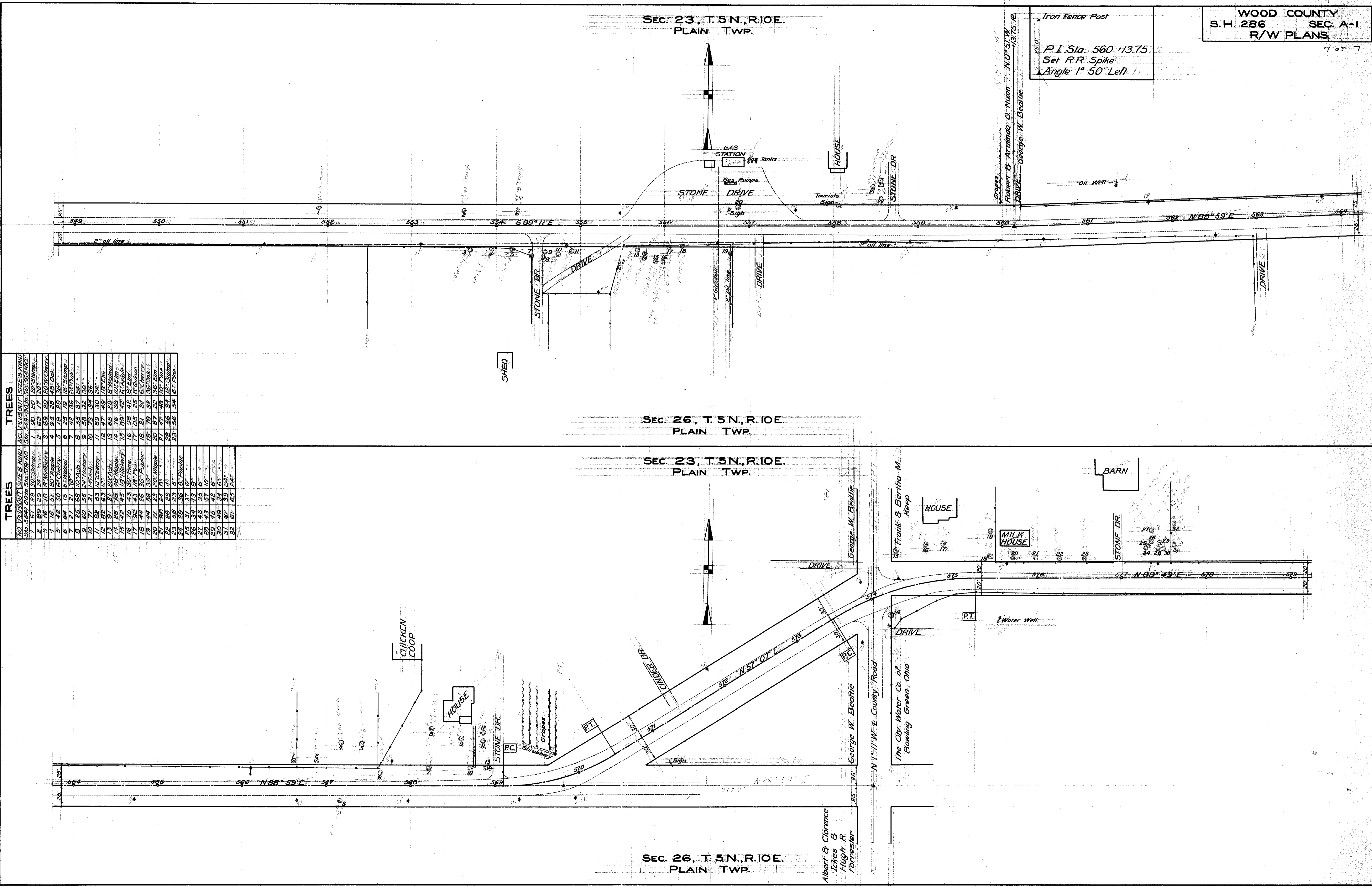
SEC. 23, T. 5 N., R. 10 E.  
PLAIN TWP.

SEC. 26, T. 5 N., R. 10 E.  
PLAIN TWP.

SEC. 23, T. 5 N., R. 10 E.  
PLAIN TWP.

SEC. 26, T. 5 N., R. 10 E.  
PLAIN TWP.

TREES		TREES	
NO.	PLUS/OUT SIZE & KIND	NO.	PLUS/OUT SIZE & KIND
1	56+ 20" 10' 51" 57" 00'	1	57+ 10' 51" 52" 00'
2	56+ 20" 10' 51" 57" 00'	2	57+ 10' 51" 52" 00'
3	56+ 20" 10' 51" 57" 00'	3	57+ 10' 51" 52" 00'
4	56+ 20" 10' 51" 57" 00'	4	57+ 10' 51" 52" 00'
5	56+ 20" 10' 51" 57" 00'	5	57+ 10' 51" 52" 00'
6	56+ 20" 10' 51" 57" 00'	6	57+ 10' 51" 52" 00'
7	56+ 20" 10' 51" 57" 00'	7	57+ 10' 51" 52" 00'
8	56+ 20" 10' 51" 57" 00'	8	57+ 10' 51" 52" 00'
9	56+ 20" 10' 51" 57" 00'	9	57+ 10' 51" 52" 00'
10	56+ 20" 10' 51" 57" 00'	10	57+ 10' 51" 52" 00'
11	56+ 20" 10' 51" 57" 00'	11	57+ 10' 51" 52" 00'
12	56+ 20" 10' 51" 57" 00'	12	57+ 10' 51" 52" 00'
13	56+ 20" 10' 51" 57" 00'	13	57+ 10' 51" 52" 00'
14	56+ 20" 10' 51" 57" 00'	14	57+ 10' 51" 52" 00'
15	56+ 20" 10' 51" 57" 00'	15	57+ 10' 51" 52" 00'
16	56+ 20" 10' 51" 57" 00'	16	57+ 10' 51" 52" 00'
17	56+ 20" 10' 51" 57" 00'	17	57+ 10' 51" 52" 00'
18	56+ 20" 10' 51" 57" 00'	18	57+ 10' 51" 52" 00'
19	56+ 20" 10' 51" 57" 00'	19	57+ 10' 51" 52" 00'
20	56+ 20" 10' 51" 57" 00'	20	57+ 10' 51" 52" 00'
21	56+ 20" 10' 51" 57" 00'	21	57+ 10' 51" 52" 00'
22	56+ 20" 10' 51" 57" 00'	22	57+ 10' 51" 52" 00'
23	56+ 20" 10' 51" 57" 00'	23	57+ 10' 51" 52" 00'
24	56+ 20" 10' 51" 57" 00'	24	57+ 10' 51" 52" 00'
25	56+ 20" 10' 51" 57" 00'	25	57+ 10' 51" 52" 00'
26	56+ 20" 10' 51" 57" 00'	26	57+ 10' 51" 52" 00'
27	56+ 20" 10' 51" 57" 00'	27	57+ 10' 51" 52" 00'
28	56+ 20" 10' 51" 57" 00'	28	57+ 10' 51" 52" 00'
29	56+ 20" 10' 51" 57" 00'	29	57+ 10' 51" 52" 00'
30	56+ 20" 10' 51" 57" 00'	30	57+ 10' 51" 52" 00'
31	56+ 20" 10' 51" 57" 00'	31	57+ 10' 51" 52" 00'
32	56+ 20" 10' 51" 57" 00'	32	57+ 10' 51" 52" 00'
33	56+ 20" 10' 51" 57" 00'	33	57+ 10' 51" 52" 00'
34	56+ 20" 10' 51" 57" 00'	34	57+ 10' 51" 52" 00'
35	56+ 20" 10' 51" 57" 00'	35	57+ 10' 51" 52" 00'
36	56+ 20" 10' 51" 57" 00'	36	57+ 10' 51" 52" 00'
37	56+ 20" 10' 51" 57" 00'	37	57+ 10' 51" 52" 00'
38	56+ 20" 10' 51" 57" 00'	38	57+ 10' 51" 52" 00'
39	56+ 20" 10' 51" 57" 00'	39	57+ 10' 51" 52" 00'
40	56+ 20" 10' 51" 57" 00'	40	57+ 10' 51" 52" 00'
41	56+ 20" 10' 51" 57" 00'	41	57+ 10' 51" 52" 00'
42	56+ 20" 10' 51" 57" 00'	42	57+ 10' 51" 52" 00'
43	56+ 20" 10' 51" 57" 00'	43	57+ 10' 51" 52" 00'
44	56+ 20" 10' 51" 57" 00'	44	57+ 10' 51" 52" 00'
45	56+ 20" 10' 51" 57" 00'	45	57+ 10' 51" 52" 00'
46	56+ 20" 10' 51" 57" 00'	46	57+ 10' 51" 52" 00'
47	56+ 20" 10' 51" 57" 00'	47	57+ 10' 51" 52" 00'
48	56+ 20" 10' 51" 57" 00'	48	57+ 10' 51" 52" 00'
49	56+ 20" 10' 51" 57" 00'	49	57+ 10' 51" 52" 00'
50	56+ 20" 10' 51" 57" 00'	50	57+ 10' 51" 52" 00'
51	56+ 20" 10' 51" 57" 00'	51	57+ 10' 51" 52" 00'
52	56+ 20" 10' 51" 57" 00'	52	57+ 10' 51" 52" 00'
53	56+ 20" 10' 51" 57" 00'	53	57+ 10' 51" 52" 00'
54	56+ 20" 10' 51" 57" 00'	54	57+ 10' 51" 52" 00'
55	56+ 20" 10' 51" 57" 00'	55	57+ 10' 51" 52" 00'
56	56+ 20" 10' 51" 57" 00'	56	57+ 10' 51" 52" 00'
57	56+ 20" 10' 51" 57" 00'	57	57+ 10' 51" 52" 00'
58	56+ 20" 10' 51" 57" 00'	58	57+ 10' 51" 52" 00'
59	56+ 20" 10' 51" 57" 00'	59	57+ 10' 51" 52" 00'
60	56+ 20" 10' 51" 57" 00'	60	57+ 10' 51" 52" 00'
61	56+ 20" 10' 51" 57" 00'	61	57+ 10' 51" 52" 00'
62	56+ 20" 10' 51" 57" 00'	62	57+ 10' 51" 52" 00'
63	56+ 20" 10' 51" 57" 00'	63	57+ 10' 51" 52" 00'
64	56+ 20" 10' 51" 57" 00'	64	57+ 10' 51" 52" 00'
65	56+ 20" 10' 51" 57" 00'	65	57+ 10' 51" 52" 00'
66	56+ 20" 10' 51" 57" 00'	66	57+ 10' 51" 52" 00'
67	56+ 20" 10' 51" 57" 00'	67	57+ 10' 51" 52" 00'
68	56+ 20" 10' 51" 57" 00'	68	57+ 10' 51" 52" 00'
69	56+ 20" 10' 51" 57" 00'	69	57+ 10' 51" 52" 00'
70	56+ 20" 10' 51" 57" 00'	70	57+ 10' 51" 52" 00'
71	56+ 20" 10' 51" 57" 00'	71	57+ 10' 51" 52" 00'
72	56+ 20" 10' 51" 57" 00'	72	57+ 10' 51" 52" 00'
73	56+ 20" 10' 51" 57" 00'	73	57+ 10' 51" 52" 00'
74	56+ 20" 10' 51" 57" 00'	74	57+ 10' 51" 52" 00'
75	56+ 20" 10' 51" 57" 00'	75	57+ 10' 51" 52" 00'
76	56+ 20" 10' 51" 57" 00'	76	57+ 10' 51" 52" 00'
77	56+ 20" 10' 51" 57" 00'	77	57+ 10' 51" 52" 00'
78	56+ 20" 10' 51" 57" 00'	78	57+ 10' 51" 52" 00'
79	56+ 20" 10' 51" 57" 00'	79	57+ 10' 51" 52" 00'
80	56+ 20" 10' 51" 57" 00'	80	57+ 10' 51" 52" 00'
81	56+ 20" 10' 51" 57" 00'	81	57+ 10' 51" 52" 00'
82	56+ 20" 10' 51" 57" 00'	82	57+ 10' 51" 52" 00'
83	56+ 20" 10' 51" 57" 00'	83	57+ 10' 51" 52" 00'
84	56+ 20" 10' 51" 57" 00'	84	57+ 10' 51" 52" 00'
85	56+ 20" 10' 51" 57" 00'	85	57+ 10' 51" 52" 00'
86	56+ 20" 10' 51" 57" 00'	86	57+ 10' 51" 52" 00'
87	56+ 20" 10' 51" 57" 00'	87	57+ 10' 51" 52" 00'
88	56+ 20" 10' 51" 57" 00'	88	57+ 10' 51" 52" 00'
89	56+ 20" 10' 51" 57" 00'	89	57+ 10' 51" 52" 00'
90	56+ 20" 10' 51" 57" 00'	90	57+ 10' 51" 52" 00'
91	56+ 20" 10' 51" 57" 00'	91	57+ 10' 51" 52" 00'
92	56+ 20" 10' 51" 57" 00'	92	57+ 10' 51" 52" 00'
93	56+ 20" 10' 51" 57" 00'	93	57+ 10' 51" 52" 00'
94	56+ 20" 10' 51" 57" 00'	94	57+ 10' 51" 52" 00'
95	56+ 20" 10' 51" 57" 00'	95	57+ 10' 51" 52" 00'
96	56+ 20" 10' 51" 57" 00'	96	57+ 10' 51" 52" 00'
97	56+ 20" 10' 51" 57" 00'	97	57+ 10' 51" 52" 00'
98	56+ 20" 10' 51" 57" 00'	98	57+ 10' 51" 52" 00'
99	56+ 20" 10' 51" 57" 00'	99	57+ 10' 51" 52" 00'
100	56+ 20" 10' 51" 57" 00'	100	57+ 10' 51" 52" 00'



FOR ANY QUESTIONS PLEASE CONTACT ODOT DISTRICT 2 REAL ESTATE AT 419-353-8131

