

STATE OF OHIO DEPARTMENT OF TRANSPORTATION

WOOD CO.
S. BOUNDARY ST./E.

SOUTH BOUNDARY ST. & EAST BOUNDARY ST.

PRINTED
JUN 7 1991
McDONNELL PROUDFOOT & ASSOCIATES, INC.

CITY OF PERRYSBURG WOOD COUNTY

ROADWAY, DRAINAGE, TRAFFIC
R.O.W., AND M.O.T. F.&O.C. SUBMITTALS

1989 SPECIFICATION

The standard specifications of the State of Ohio, Department of Transportation, including changes and supplements, in the proposal shall govern this improvement.

I hereby approve these plans and declare that of this improvement will require the part time closure of highway to traffic, as noted on sheet(s) 788, during which detours will be provided as shown hereon. Provisions for maintenance and safety of traffic will be as set forth in the plans and estimates.

#023370

CONVENTIONAL SIGNS

County Line _____	Limited Access (only) _____ LA _____
Township Line _____	Right of Way (only) _____ RW _____
Section Line _____	Limited Access & Right of Way _____ LA&RW _____
Corporation Line _____ or _____	Existing Right of Way _____
Fence Line (existing) —x—x— (proposed) —x—x—	Property Line — — (in existing fence) —x— —x—
Center Line _____ 352 _____ 353 _____	Railroad _____
Trees (to be removed) (to be removed) (to be removed)	Guardrail (existing) —o—o— (proposed) —o—o—
Utility Poles: Telephone —o—, Power —o—, Light —o—	Water Line —W—, Gas Line —G—
Cable TV —o—, Traffic Signal —o—	Sanitary —San—, Storm —S—
Guy Pole —o—	Electrical —E—, Telephone —T—
	Telephone Pedestal —T—, Gas Test Station —G—

INDEX OF SHEETS

Title Sheet	1
Schematic Plan & Design Designation	2
Typical Section	384
General Notes	586
Maintenance of Traffic General Notes	788
General Summary	9-12
Subsummaries	13-20
Plan and Profile	21-37
Cross Sections	38-52
South Boundary Street Watermain Relocation Details	53
Intersection Details	54-57
Culvert Plan & Details, STA. 78+95 S. Boundary St.	58-60
Culvert Details, STA. 90+50 S. Boundary St. & 63"x98"	
Sewer Bend & Culvert Details	61
Culvert Plan & Profile, STA. 1+14 E. Boundary St.	62
Watermain Standard Details	63
Traffic Control Subsummaries	64&65
Signing & Striping Plan	66-70
Traffic Signal & Major Sign Detail	71
Summary of Additional R-O-W	71A

LINE DATA

PROJECT	BEGIN	END
S. BOUNDARY ST.	STA. 53+80	STA. 93+58.50
E. BOUNDARY ST.	STA. 0+12	STA. 7+00

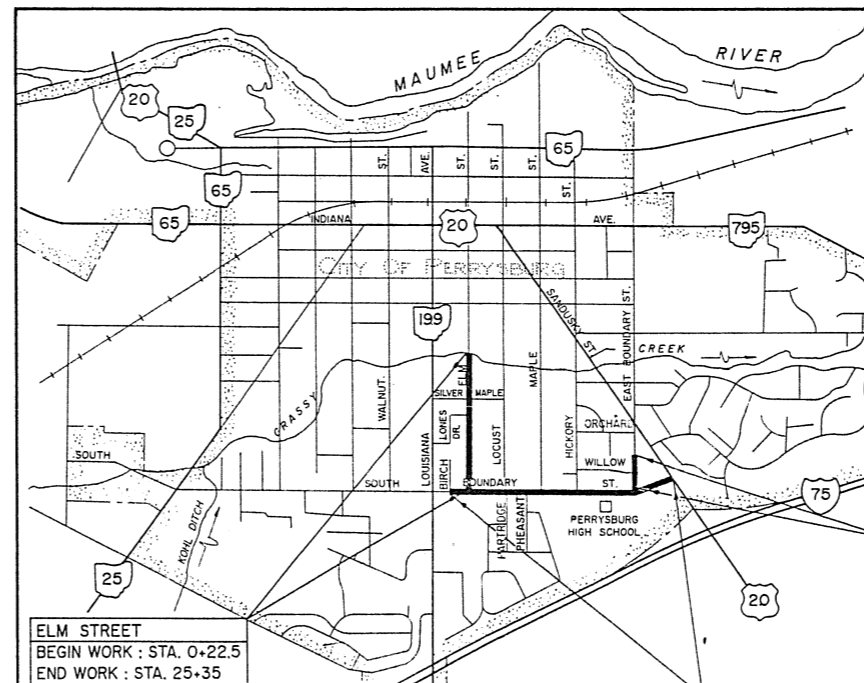
TOTAL LENGTH OF PROJECT = 4666.5 LIN. FT. OR 0.884 MI.

WORK	BEGIN	END
S. BOUNDARY ST.	STA. 53+65	STA. 93+58.50
E. BOUNDARY ST.	STA. 0+12	STA. 7+14
ELM ST.	STA. 0+22.50	STA. 25+35

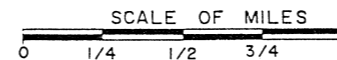
TOTAL LENGTH OF WORK = 7208.0 LIN. FT. OR 1.365 MI.

McDONNELL PROUDFOOT & ASSOCIATES inc.
consulting engineers

BY: THOMAS H. YURYSTA DATE: PE. No. 41471



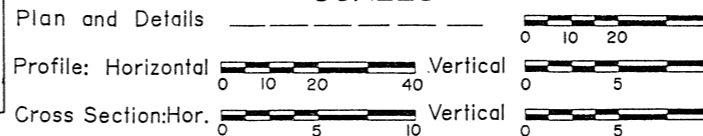
LOCATION MAP



UNDERGROUND UTILITIES
2 WORKING DAYS BEFORE YOU DIG
Call --- 800-362-2764 (Toll free)
OHIO UTILITIES PROTECTION SERVICE
NON-MEMBERS
MUST BE CALLED DIRECTLY

Portion to be improved _____
State, Federal & Interstate Roads _____
Other Roads _____

SCALES



SUPPLEMENTAL PRINTS OF STANDARD CONSTRUCTION DRAWINGS							
BP-1	6-1-65	MH-3	12-18-84	MT-97.10	4-29-88	TC-52.20	4-3-79
BP-5	10-1-87	MH-4	6-12-75	MT-97.11	10-4-89	TC-71.10	4-3-79
BP-6	10-1-87			MT-99.10	11-14-86	TC-82.10	8-29-81
BP-7	10-1-87	MC-1	6-13-69	MT-99.20	4-29-88	TC-85.20	1-20-81
BP-12	10-1-87	MC-4	7-26-76	LA-1	6-1-79		
		MC-11	8-1-78	LA-2	6-1-79		
				TC-9.10	4-24-80		
CB-2-2-A8B	5-1-79	GR-1	1-11-85	TC-21.20	1-20-84		
CB-3	5-1-79	GR-2B	2-5-82	TC-35.10	8-29-84		
CB-3A	5-1-79	GR-4B	2-5-82	TC-41.20	3-26-79		
CB-6	5-1-79	HW-3	6-1-65	TC-41.40	6-18-79		
CB-7	12-18-84	HW-4B	4-1-80	TC-42.20	3-26-79		
MH-1	12-18-84			TC-52.10	4-3-79		

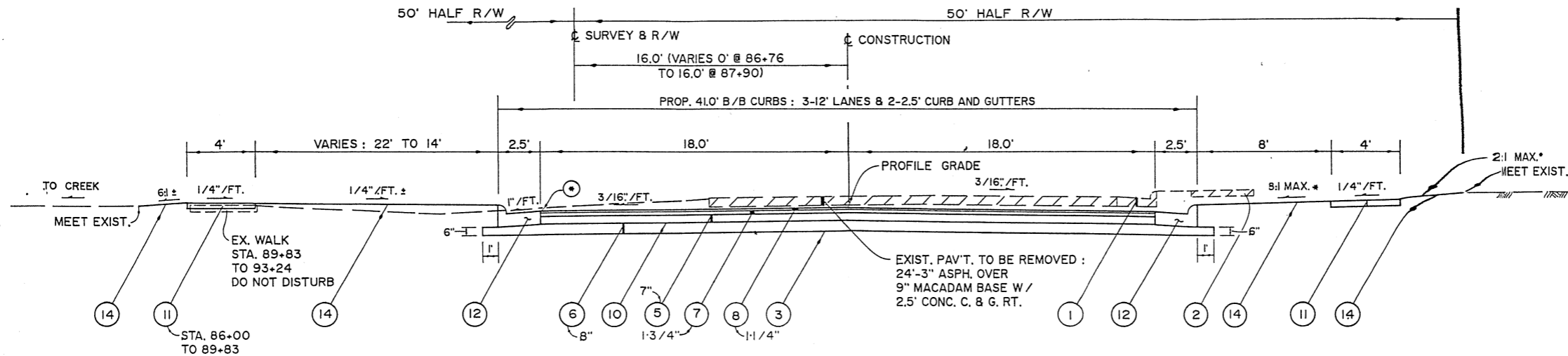
SUPPLEMENTAL SPECIFICATIONS	
814	1-21-88
847	10-17-83
915	1-21-88
947	10-17-83

DEPARTMENT OF
FEDERAL HIGHWAY

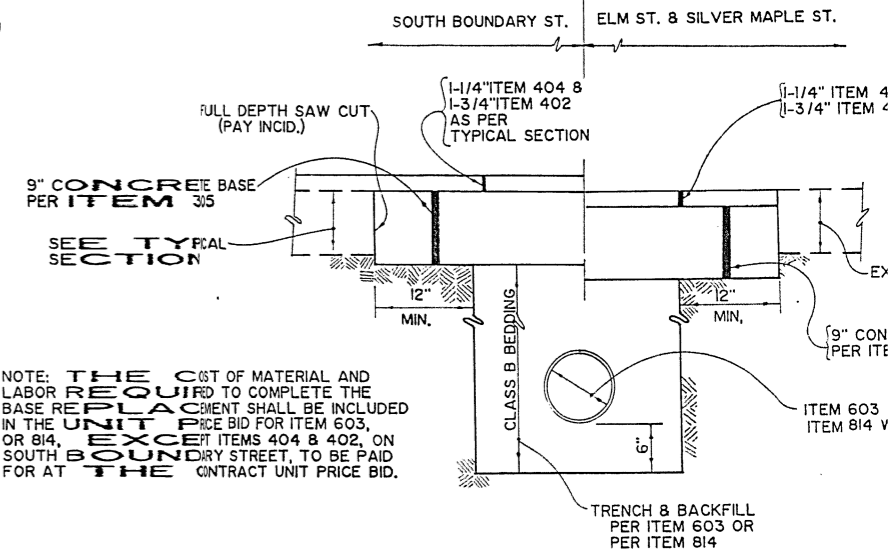
APPROVED:

DIVISION ADMINISTRATOR

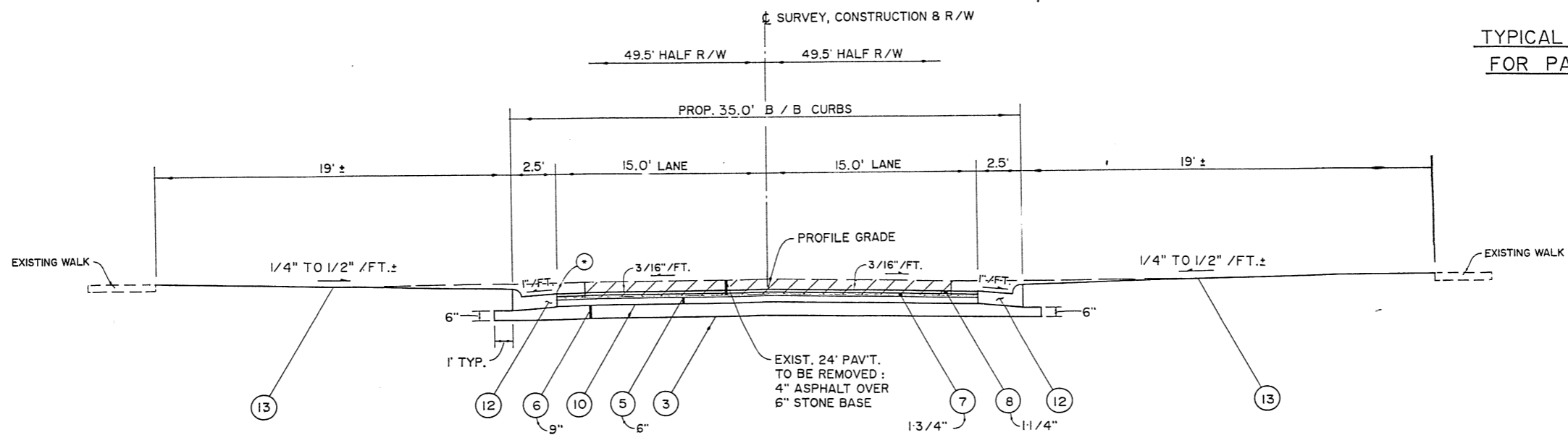
TYPICAL SECTIONS TYPE 404 ON 301



TYPICAL SECTION B: NORMAL
SOUTH BOUNDARY ST.
STA. 86+00 TO STA. 93+58.5 = 758.5 LIN. FT.



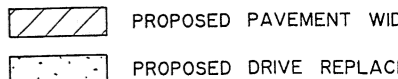
TYPICAL UTILITY TRENCH DETAIL
FOR PAVEMENT REPLACEMENT



TYPICAL SECTION C: NORMAL
EAST BOUNDARY ST.
STA. 0 + 12 TO STA. 7 + 00 = 688. LIN. FT.

NOTE: SEE SHEET NO. 3
LEGEND & NOTES

LEGEND

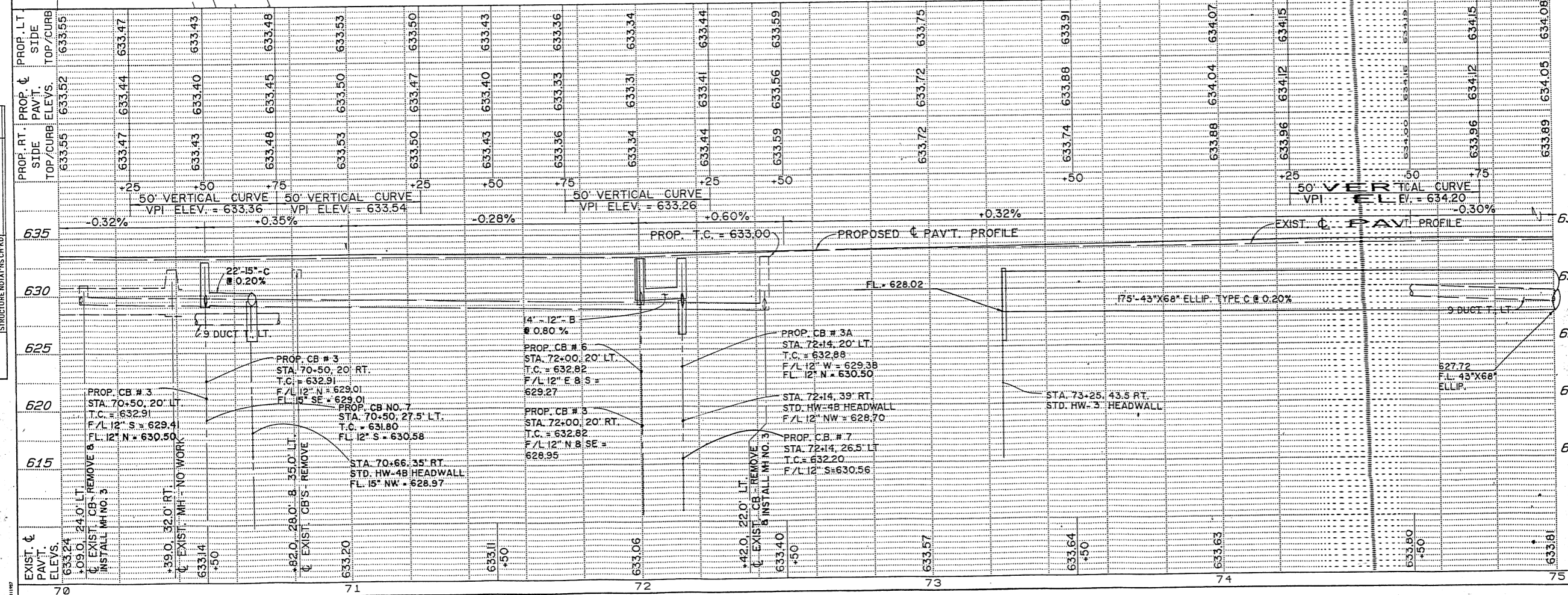
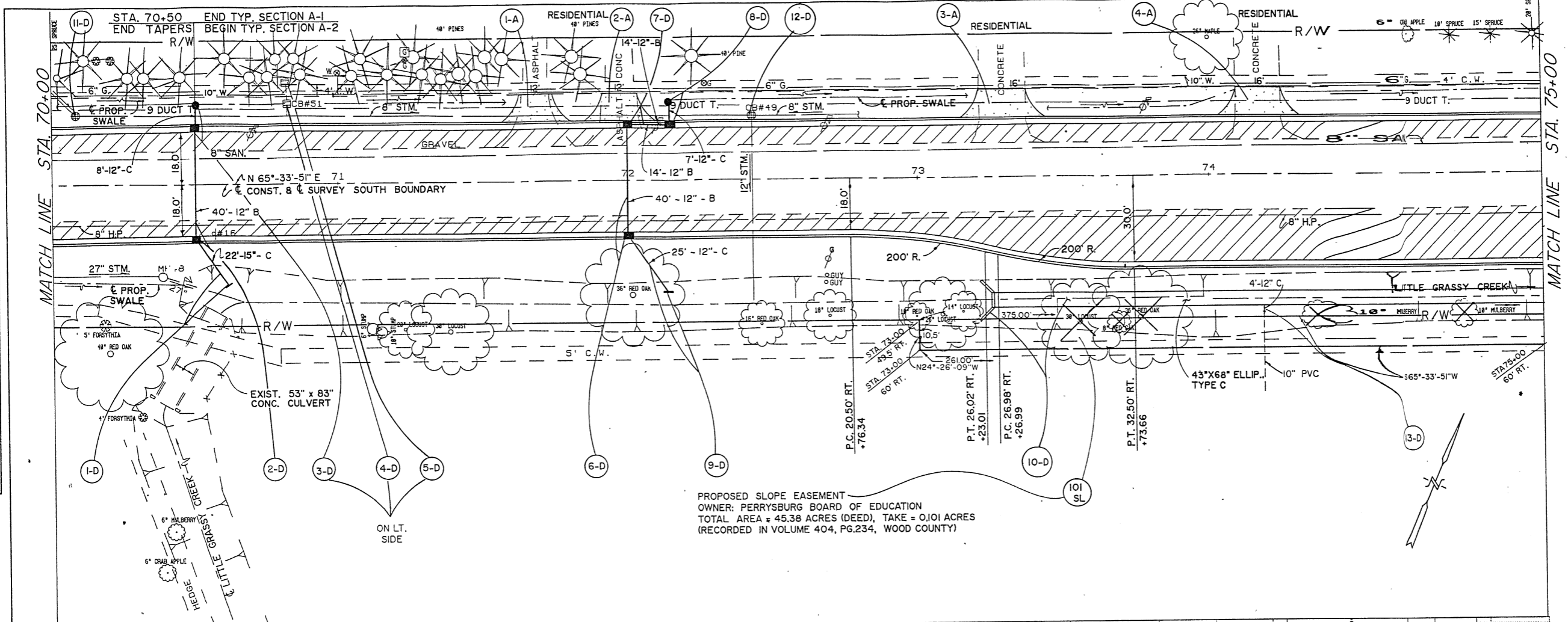


PLAN

DATE	
BY	
SURVEYED	
PLOTTED	
ALIGNED CHECKED	
RT. OF WAY CHECKED	
NO.	

PROFILE

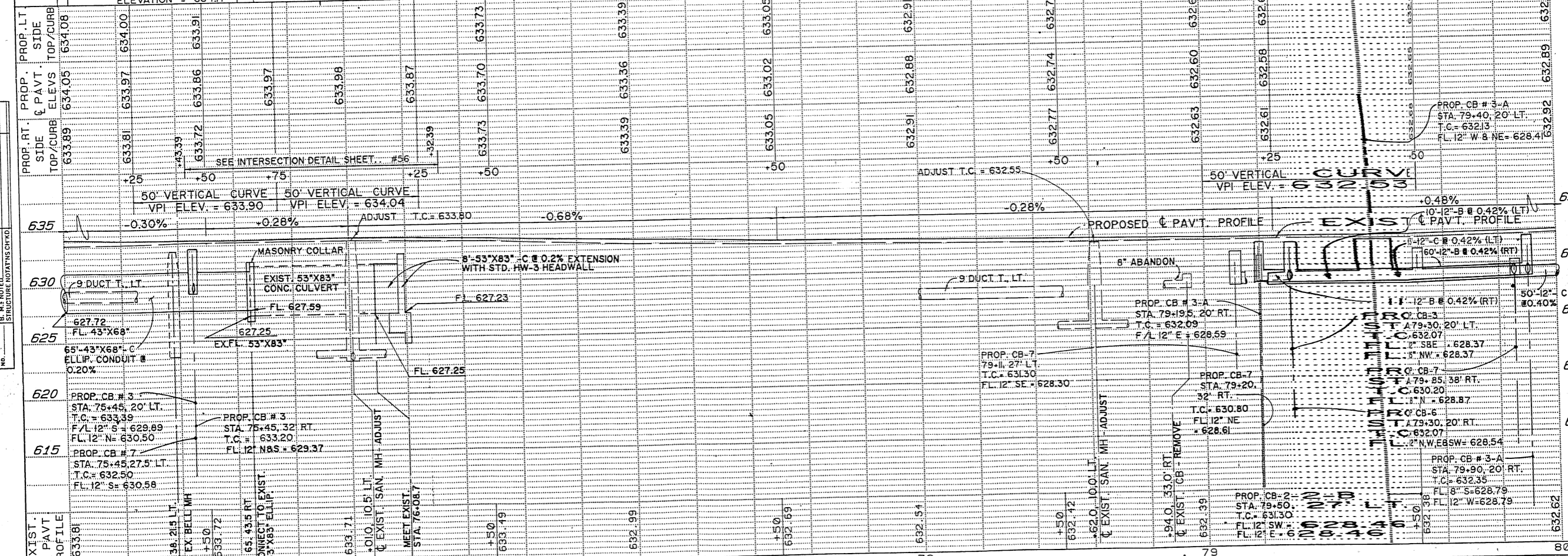
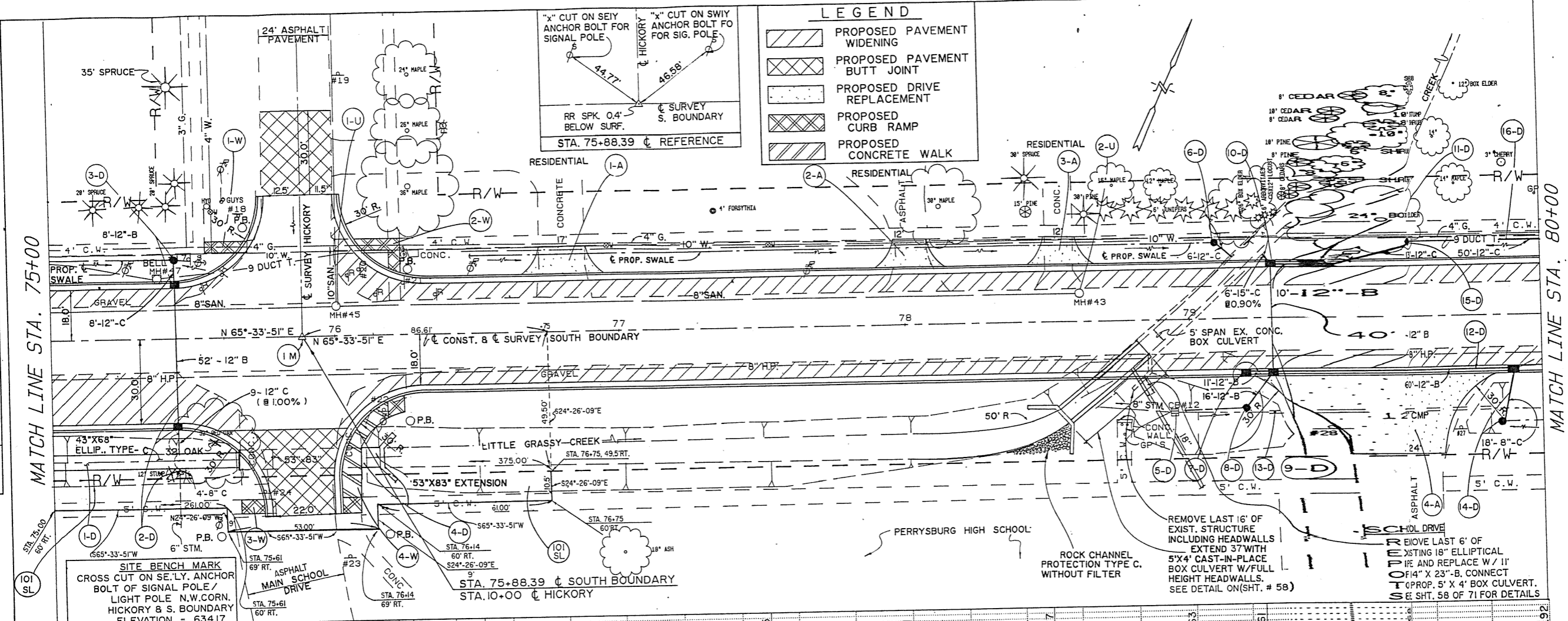
DATE	
BY	
SURVEYED	
PLOTTED	
STRUCTURE NOTATIONS CHECKED	
NO.	



ESTIMATED QUANTITIES

STATION	TO	FROM	REF. NO.	DESCRIPTION	QUANTITY
615	70+50	70+66	I-D	CONCRETE MASONRY	0.25
620	70+50	70+50	2-D	CONCRETE MASONRY	40
625	70+50	70+50	3-D	CONCRETE MASONRY	7
630	70+82	70+82	4-D	CONCRETE MASONRY	40
635	70+81	70+81	5-D	CONCRETE MASONRY	14
640	72+00	72+00	6-D	CONCRETE MASONRY	7
645	72+00	72+14	7-D	CONCRETE MASONRY	25
650	72+14	72+14	8-D	CONCRETE MASONRY	0.20
655	72+14	72+14	9-D	CONCRETE MASONRY	0.20
660	72+14	72+14	10-D	CONCRETE MASONRY	0.20
665	72+14	72+14	11-D	CONCRETE MASONRY	0.20
670	72+14	72+14	12-D	CONCRETE MASONRY	0.20
675	72+14	72+14	13-D	CONCRETE MASONRY	0.20
680	72+14	72+14	14-D	CONCRETE MASONRY	0.20
685	72+14	72+14	15-D	CONCRETE MASONRY	0.20
690	72+14	72+14	16-D	CONCRETE MASONRY	0.20
695	72+14	72+14	17-D	CONCRETE MASONRY	0.20
700	72+14	72+14	18-D	CONCRETE MASONRY	0.20
705	72+14	72+14	19-D	CONCRETE MASONRY	0.20
710	72+14	72+14	20-D	CONCRETE MASONRY	0.20
715	72+14	72+14	21-D	CONCRETE MASONRY	0.20
720	72+14	72+14	22-D	CONCRETE MASONRY	0.20
725	72+14	72+14	23-D	CONCRETE MASONRY	0.20
730	72+14	72+14	24-D	CONCRETE MASONRY	0.20
735	72+14	72+14	25-D	CONCRETE MASONRY	0.20
740	72+14	72+14	26-D	CONCRETE MASONRY	0.20
745	72+14	72+14	27-D	CONCRETE MASONRY	0.20
750	72+14	72+14	28-D	CONCRETE MASONRY	0.20
755	72+14	72+14	29-D	CONCRETE MASONRY	0.20
760	72+14	72+14	30-D	CONCRETE MASONRY	0.20
765	72+14	72+14	31-D	CONCRETE MASONRY	0.20
770	72+14	72+14	32-D	CONCRETE MASONRY	0.20
775	72+14	72+14	33-D	CONCRETE MASONRY	0.20
780	72+14	72+14	34-D	CONCRETE MASONRY	0.20
785	72+14	72+14	35-D	CONCRETE MASONRY	0.20
790	72+14	72+14	36-D	CONCRETE MASONRY	0.20
795	72+14	72+14	37-D	CONCRETE MASONRY	0.20
800	72+14	72+14	38-D	CONCRETE MASONRY	0.20
805	72+14	72+14	39-D	CONCRETE MASONRY	0.20
810	72+14	72+14	40-D	CONCRETE MASONRY	0.20
815	72+14	72+14	41-D	CONCRETE MASONRY	0.20
820	72+14	72+14	42-D	CONCRETE MASONRY	0.20
825	72+14	72+14	43-D	CONCRETE MASONRY	0.20
830	72+14	72+14	44-D	CONCRETE MASONRY	0.20
835	72+14	72+14	45-D	CONCRETE MASONRY	0.20
840	72+14	72+14	46-D	CONCRETE MASONRY	0.20
845	72+14	72+14	47-D	CONCRETE MASONRY	0.20
850	72+14	72+14	48-D	CONCRETE MASONRY	0.20
855	72+14	72+14	49-D	CONCRETE MASONRY	0.20
860	72+14	72+14	50-D	CONCRETE MASONRY	0.20
865	72+14	72+14	51-D	CONCRETE MASONRY	0.20
870	72+14	72+14	52-D	CONCRETE MASONRY	0.20
875	72+14	72+14	53-D	CONCRETE MASONRY	0.20
880	72+14	72+14	54-D	CONCRETE MASONRY	0.20
885	72+14	72+14	55-D	CONCRETE MASONRY	0.20
890	72+14	72+14	56-D	CONCRETE MASONRY	0.20
895	72+14	72+14	57-D	CONCRETE MASONRY	0.20
900	72+14	72+14	58-D	CONCRETE MASONRY	0.20
905	72+14	72+14	59-D	CONCRETE MASONRY	0.20
910	72+14	72+14	60-D	CONCRETE MASONRY	0.20
915	72+14	72+14	61-D	CONCRETE MASONRY	0.20
920	72+14	72+14	62-D	CONCRETE MASONRY	0.20
925	72+14	72+14	63-D	CONCRETE MASONRY	0.20
930	72+14	72+14	64-D	CONCRETE MASONRY	0.20
935	72+14	72+14	65-D	CONCRETE MASONRY	0.20
940	72+14	72+14	66-D	CONCRETE MASONRY	0.20
945	72+14	72+14	67-D	CONCRETE MASONRY	0.20
950	72+14	72+14	68-D	CONCRETE MASONRY	0.20
955	72+14	72+14	69-D	CONCRETE MASONRY	0.20
960	72+14	72+14	70-D	CONCRETE MASONRY	0.20
965	72+14	72+14	71-D	CONCRETE MASONRY	0.20
970	72+14	72+14	72-D	CONCRETE MASONRY	0.20
975	72+14	72+14	73-D	CONCRETE MASONRY	0.20
980	72+14	72+14	74-D	CONCRETE MASONRY	0.20
985	72+14	72+14	75-D	CONCRETE MASONRY	0.20
990	72+14	72+14	76-D	CONCRETE MASONRY	0.20
995	72+14	72+14	77-D	CONCRETE MASONRY	0.20

BY DATE
SURVEYED
NOTE BOOK NO.
ALIGNMENT CHECKED
RT OF WAY CHECKER



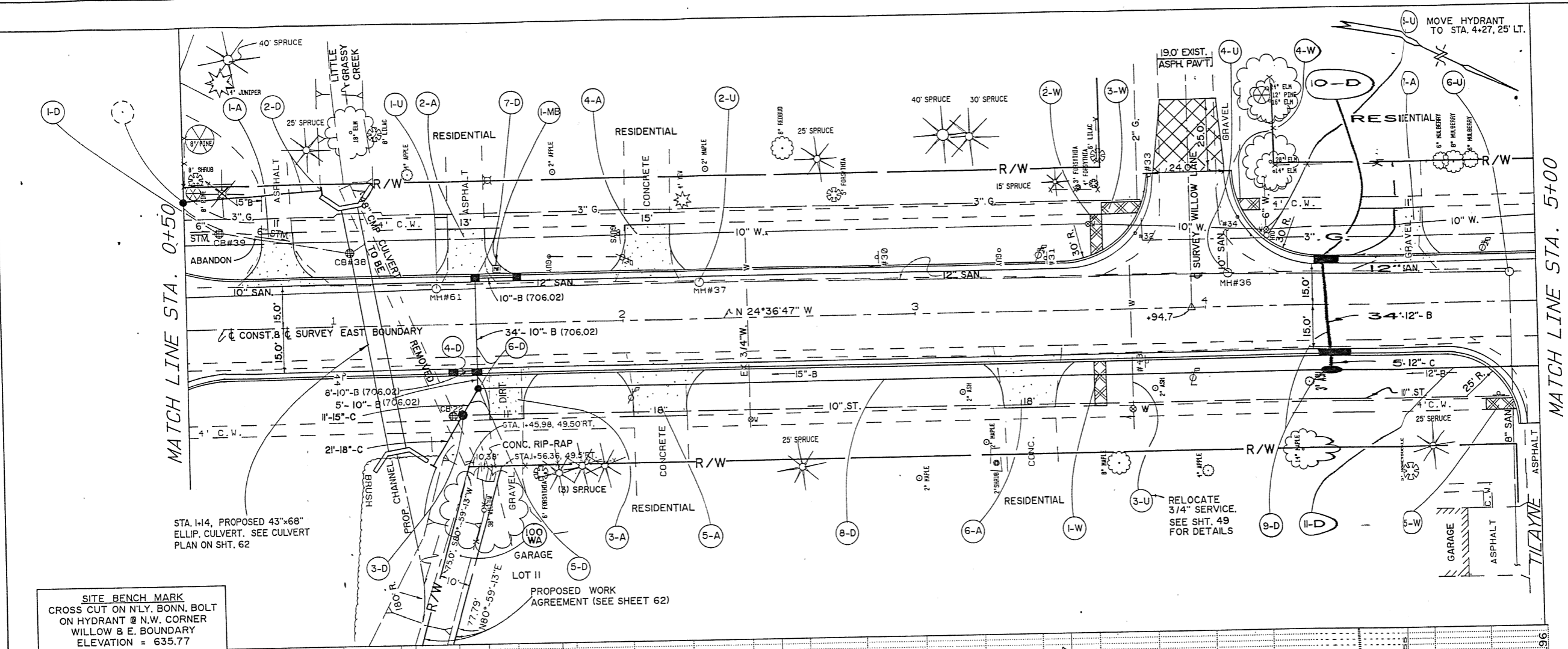
STATION	EXIST. PAV'T. ELEV.	PROPOSED PAV'T. ELEV.
75	633.81	634.05
75+10	633.97	634.05
75+20	633.86	633.97
75+30	633.97	633.97
75+40	633.98	633.97
75+50	633.87	633.98
75+60	633.70	633.87
75+70	633.36	633.70
75+80	633.05	633.36
75+90	632.58	633.05
76+00	632.77	632.58
76+10	632.63	632.77
76+20	632.60	632.63
76+30	632.51	632.60
76+40	632.58	632.51
76+50	632.62	632.58
76+60	632.69	632.62
76+70	632.54	632.69
76+80	632.12	632.54
76+90	632.00	632.12
77+00	632.39	632.00
77+10	632.39	632.39
77+20	632.59	632.39
77+30	632.59	632.59
77+40	632.75	632.59
77+50	632.91	632.75
77+60	632.77	632.91
77+70	632.63	632.77
77+80	632.60	632.63
77+90	632.61	632.60
78+00	632.51	632.61
78+10	632.48	632.51
78+20	632.48	632.48
78+30	632.48	632.48
78+40	632.48	632.48
78+50	632.48	632.48
78+60	632.48	632.48
78+70	632.48	632.48
78+80	632.48	632.48
78+90	632.48	632.48
79+00	632.48	632.48

STATION	PROF. LT. SIDE TOP/CURB ELEV.	PROP. RT. SIDE TOP/CURB ELEV.	PROF. LT. SIDE TOP/CURB ELEV.	PROP. RT. SIDE TOP/CURB ELEV.
75+00	634.08	634.05	634.08	634.05
75+10	634.00	633.97	634.00	633.97
75+20	633.91	633.86	633.91	633.86
75+30	633.97	633.97	633.97	633.97
75+40	633.98	633.98	633.98	633.98
75+50	633.87	633.87	633.87	633.87
75+60	633.70	633.70	633.70	633.70
75+70	633.36	633.36	633.36	633.36
75+80	633.05	633.05	633.05	633.05
75+90	632.58	632.58	632.58	632.58
76+00	632.77	632.77	632.77	632.77
76+10	632.63	632.63	632.63	632.63
76+20	632.60	632.60	632.60	632.60
76+30	632.51	632.51	632.51	632.51
76+40	632.58	632.58	632.58	632.58
76+50	632.62	632.62	632.62	632.62
76+60	632.69	632.69	632.69	632.69
76+70	632.54	632.54	632.54	632.54
76+80	632.12	632.12	632.12	632.12
76+90	632.00	632.00	632.00	632.00
77+00	632.39	632.39	632.39	632.39
77+10	632.39	632.39	632.39	632.39
77+20	632.59	632.59	632.59	632.59
77+30	632.59	632.59	632.59	632.59
77+40	632.75	632.75	632.75	632.75
77+50	632.91	632.91	632.91	632.91
77+60	632.77	632.77	632.77	632.77
77+70	632.63	632.63	632.63	632.63
77+80	632.60	632.60	632.60	632.60
77+90	632.61	632.61	632.61	632.61
78+00	632.51	632.51	632.51	632.51
78+10	632.48	632.48	632.48	632.48
78+20	632.48	632.48	632.48	632.48
78+30	632.48	632.48	632.48	632.48
78+40	632.48	632.48	632.48	632.48
78+50	632.48	632.48	632.48	632.48
78+60	632.48	632.48	632.48	632.48
78+70	632.48	632.48	632.48	632.48
78+80	632.48	632.48	632.48	632.48
78+90	632.48	632.48	632.48	632.48
79+00	632.48	632.48	632.48	632.48

ESTIMATED QUANTITIES	ITEM	UNIT	EST. QUANTITIES		STATION
			AMOUNT	PRICE	
608	CURB RAMP TYPE 2	EACH			608
608	CONC. WALK (4")	S.F.			608
202	WALK REMOVED	S.F.			202
603	CONDUIT TYPE C	L.F.	4		603
604	CATCH BASIN NO. 7	EACH			604
604	CATCH BASIN NO. 6	EACH			604
604	CATCH BASIN NO. 3-A	EACH			604
604	CATCH BASIN NO. 3	EACH			604
604	CATCH BASIN NO. 2-B	EACH			604
603	53"X83" CONDUIT TYPE C CL. RE-11	L.F.			603
603	43"X68" CONDUIT TYPE C CL. RE-11	L.F.	65		603
603	15" CONDUIT TYPE C	L.F.			603
603	12" CONDUIT TYPE C	L.F.			603
602	CONCRETE MASONRY	C.Y.			602
202	CATCH BASIN REMOVED	EACH			202
202	PIPE REMOVED UNDER	L.F.			202

PLAN	DATE
BY	
SURVEYED	
ALIGNED	
RT. OF WAY CHECKED	
NO.	

PROFILE	DATE
BY	
PLANNED	
NOTES CHECKED	
NO.	
STRUCTURE NOTATIONS CHKD	



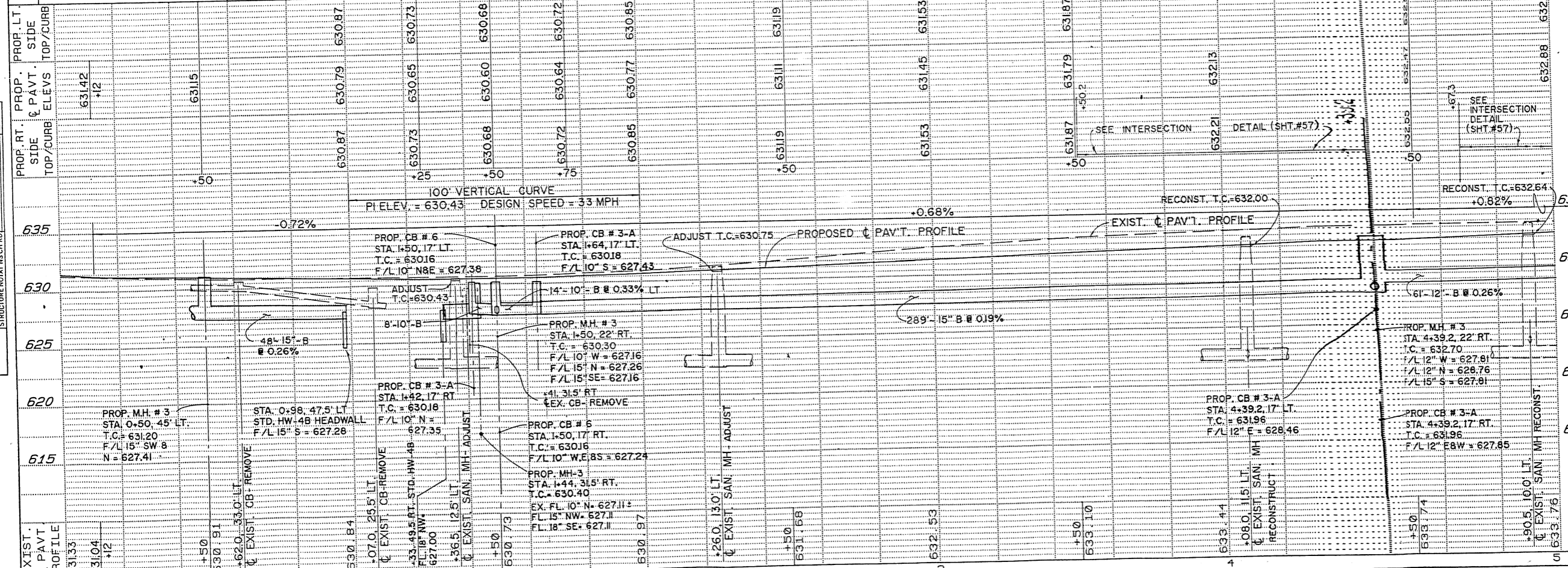
WOOD COUNTY
S. BOUNDARY ST./E. BOUNDARY ST.

LEGEND
 PROPOSED CURB RAMP
 PROPOSED DRIVE REPLACEMENT
 T.C. DENOTES TOP OF CASTING ELEVATION AND GRATE ELEVATIONS FOR CATCH

SITE BENCH MARK
 CROSS CUT ON N.L.Y. BONN. BOLT
 ON HYDRANT @ N.W. CORNER
 WILLOW & E. BOUNDARY
 ELEVATION = 635.77

STA. 1+14, PROPOSED 43"x68"
 ELLIP. CULVERT. SEE CULVERT
 PLAN ON SHT. 62

PROPOSED WORK
 AGREEMENT (SEE SHEET 62)



REF. NO.	STATION	FROM	TO	ESTIMATED QUANTITIES		SEE SHT. NO.
				QUANTITY	UNIT	
I-D	0+62	L	0+62			
2-D	0+50	L	0+98			
3-D	1+33	R	1+44			
4-D	1+42	R	1+50			
5-D	1+44	R	1+50			
6-D	1+50	R	1+50			
7-D	1+50	R	1+64			
8-D	1+50	R	1+50			
202		CATCH BASIN REMOVED	EACH			
602		CONCRETE MASONRY	C.Y.	0.25		
603		10" CONDUIT TYPE B (706.02)	L.F.	8		
603		12" CONDUIT TYPE B	L.F.	34		
603		12" CONDUIT TYPE C	L.F.	5		
603		15" CONDUIT TYPE B	L.F.	48		
603		15" CONDUIT TYPE C	L.F.	21		
604		CATCH BASIN NO. 3-A	EACH	1		
604		CATCH BASIN NO. 6	EACH	1		
604		MANHOLE NO. 3	EACH	1		
604		MANHOLE NO. 6	EACH	1		
604		SPECIAL MAILBOX SUPPORT SINGLE	EACH	1		
202		WALK REMOVED	S.F.			
608		CONC. WALK (4')	S.F.			
608		CURB RAMP TYPE 2	EACH			

EAST BOUNDARY STREET

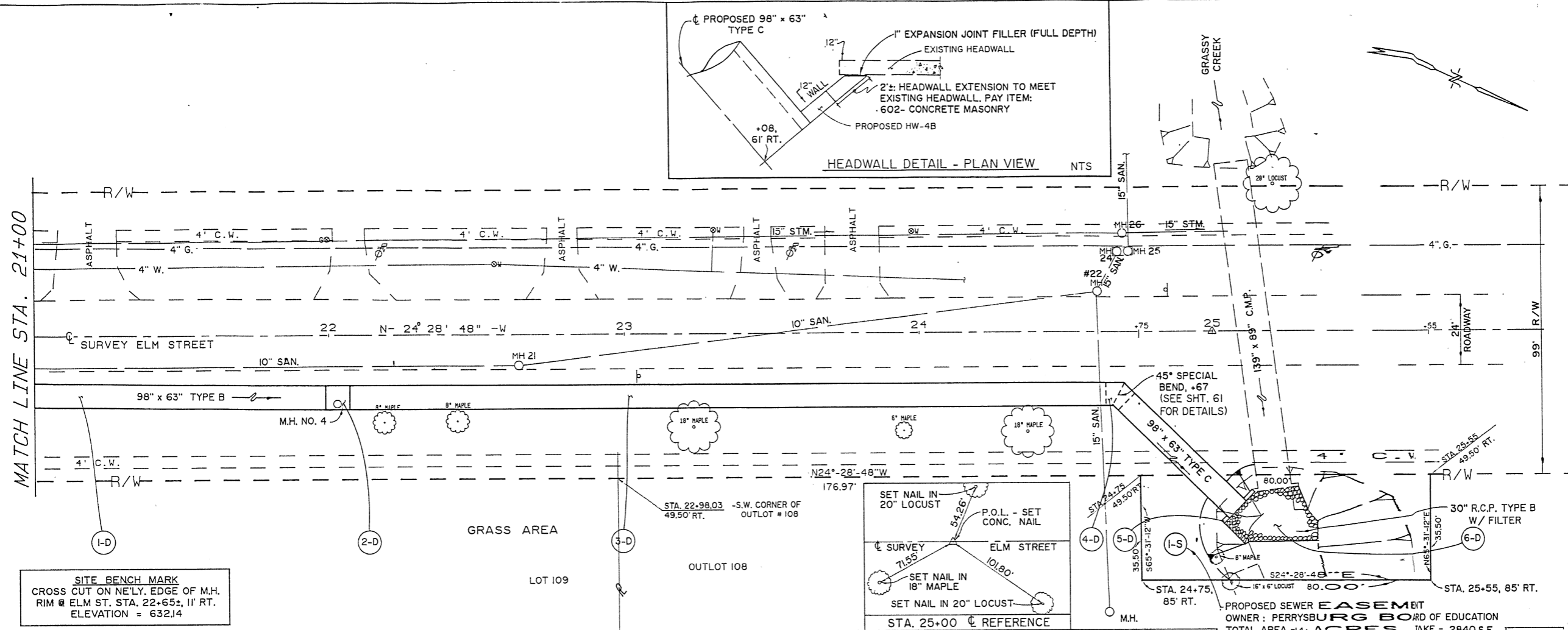
TYPICAL NOTE FOR ELM STREET CONSTRUCT:
 REPLACEMENT OF DRIVES, CURBS, WALKS, &
 PAVEMENT DISTURBED FROM SEWER CONSTRUCT
 SHALL BE REPLACED IN ACCORDANCE WITH
 WITH PAYMENT INCIDENTAL TO 603 ITEMS.

PLAN

DATE	
BY	
NO.	
RT. OF WAY CHECKED	
ALIGNED & ECKED	
PLOTTED	
SURVEYED	

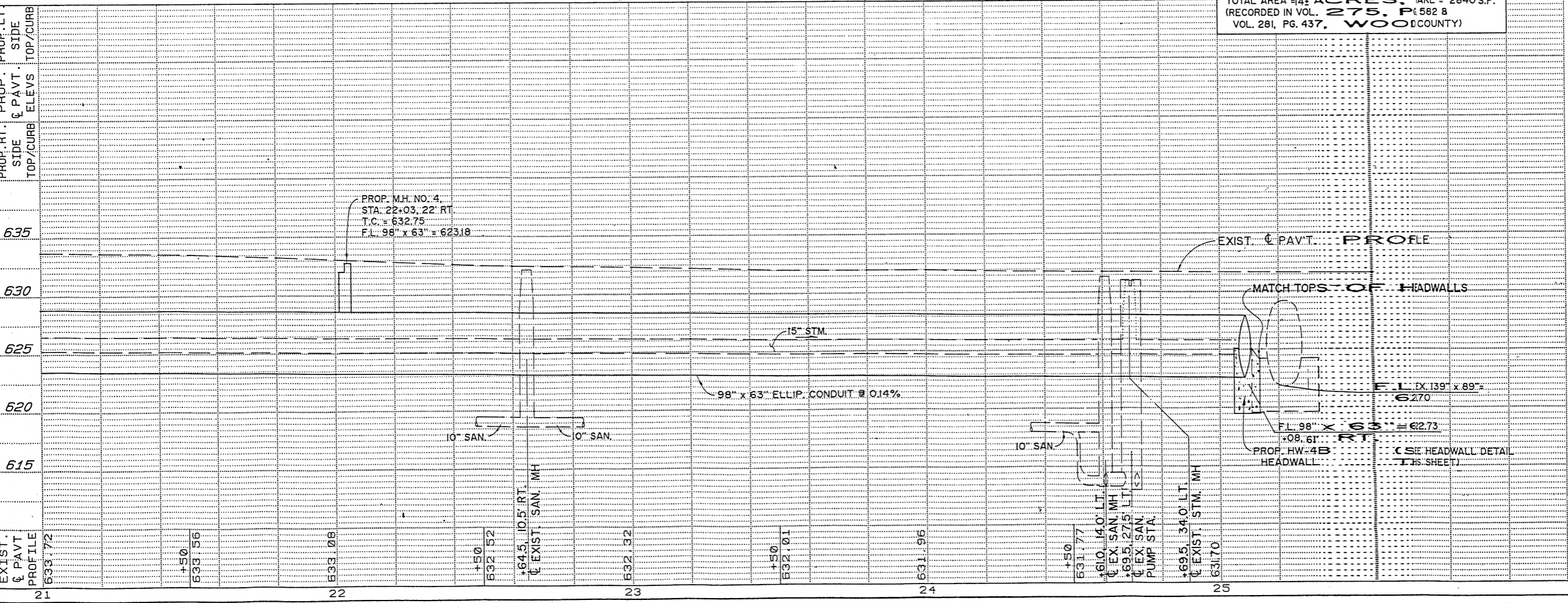
PROFILE

DATE	
BY	
NO.	
STRUCTURE NOTATIONS CHECKED	
B. M. NOTED	
GRADES CHECKED	
SURVEYED	



SITE BENCH MARK
 CROSS CUT ON N.E. LY. EDGE OF M.H.
 RIM @ ELM ST. STA. 22+65±, 11' RT.
 ELEVATION = 632.14

PROPOSED SEWER EASEMENT
 OWNER: PERRYSBURG BOARD OF EDUCATION
 TOTAL AREA = 4± ACRES. TAKE = 2840 S.F.
 (RECORDED IN VOL. 275, P. 582 B
 VOL. 281, PG. 437, WOOD COUNTY)

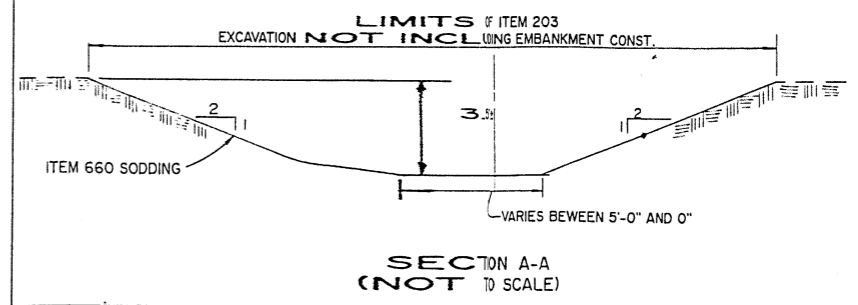
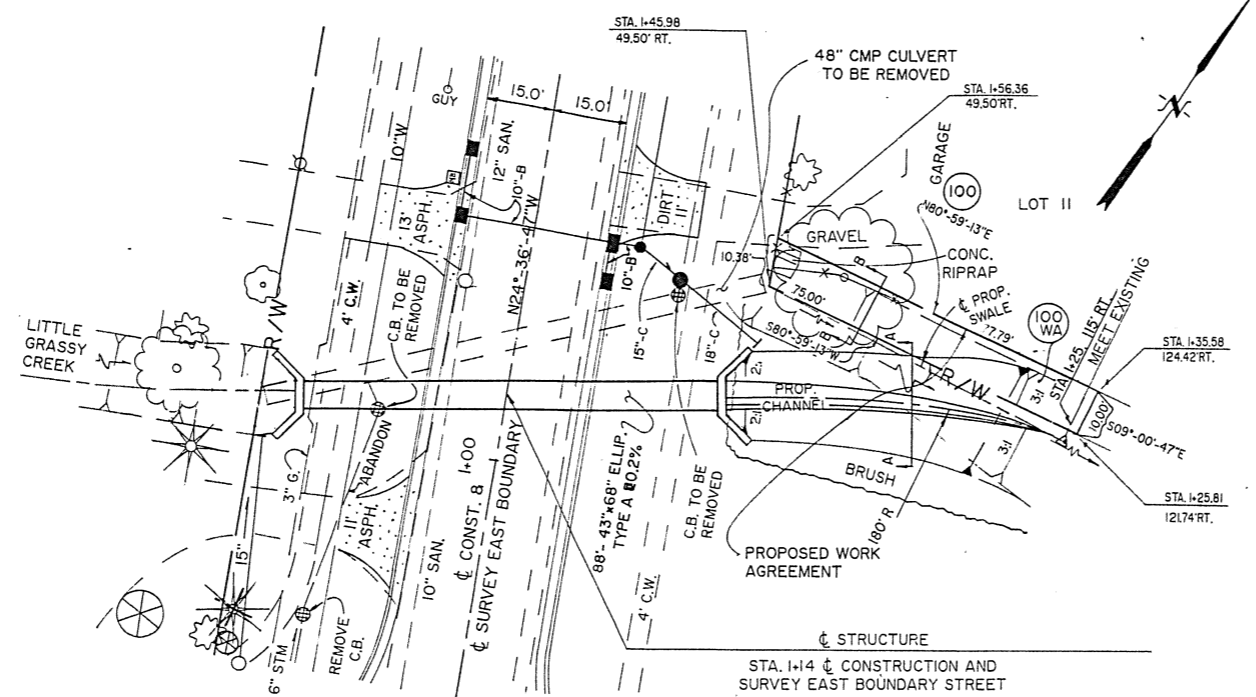


ESTIMATED QUANTITIES

REF. NO.	STATION	DESCRIPTION	UNIT	QUANTITY
I-D	21+00	TO	R	22+03
2-D	22+03	R	R	22+03
3-D	22+03	R	R	23+08
4-D	24+67	R	R	24+67
5-D	25+08	R	R	25+08
6-D	25+08	R	R	25+35
601		ROCK CHANNEL PROTECTION TYPE B WITH FILTER	C.Y.	42
602		CONCRETE MASONRY	C.Y.	2.87
603		63" x 98" CONDUIT TYPE C CL. HE-II	L.F.	53
603		63" x 98" CONDUIT TYPE B CL. HE-II	L.F.	261
604		MANHOLE NO. 4	EACH	1

PROPOSED WORK AGREEMENT 100 WA
OWNER: Philip H.
8 Sally L. VanDyne

TOTAL AREA = 1.013 ± ACRES, TAKE = 0.018 ACRES
(RECORDED IN VOLUME # 524, PAGE # 859
WOOD COUNTY).



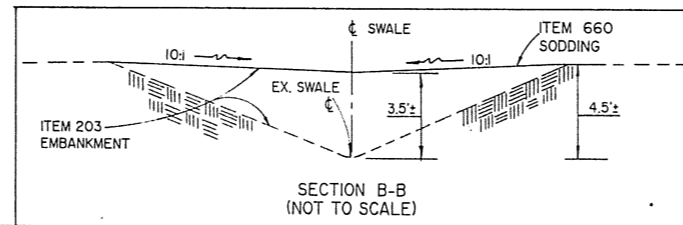
EXISTING STRUCTURE
STA. 1+25 @ CONSTRUCTION AND SURVEY EAST BOUNDARY STREET
TYPE: 48" CMP @ 22° RIGHT FACE SKEW 24' ROADWAY WIDTH

PROPOSED STRUCTURE
TYPE: 88" x 43" x 68" CONDUIT TYPE A REINFORCED CONCRETE ELLIPTICAL WITH FULL HEIGHT HEADWALLS
SKEW: 9°30' RIGHT FACE
35' ROADWAY WIDTH BACK TO BACK OF CURB

HYDRAULIC DATA
DRAINAGE AREA: 124.5 AC.
Q25 = 50 CFS HEADWATER 25 ELEV. = 625.31
Q100 = 60 CFS HEADWATER 100 ELEV. = 625.63

COMPILED BY **SRB** ESTIMATED Q
DATE 2-1-21

ITEM	ITEM EXT.	DESCRIPT
202	35200	PIPE REMOVED, OVER
203	12000	EXCAVATION NOT INCL EMBANKMENT CONST
602	20000	CONCRETE MASONRY
603	53104	43"x68" CONDUIT, T
660	30000	SODDING
203	20000	EMBANKMENT
		TOTALS TO GENERA

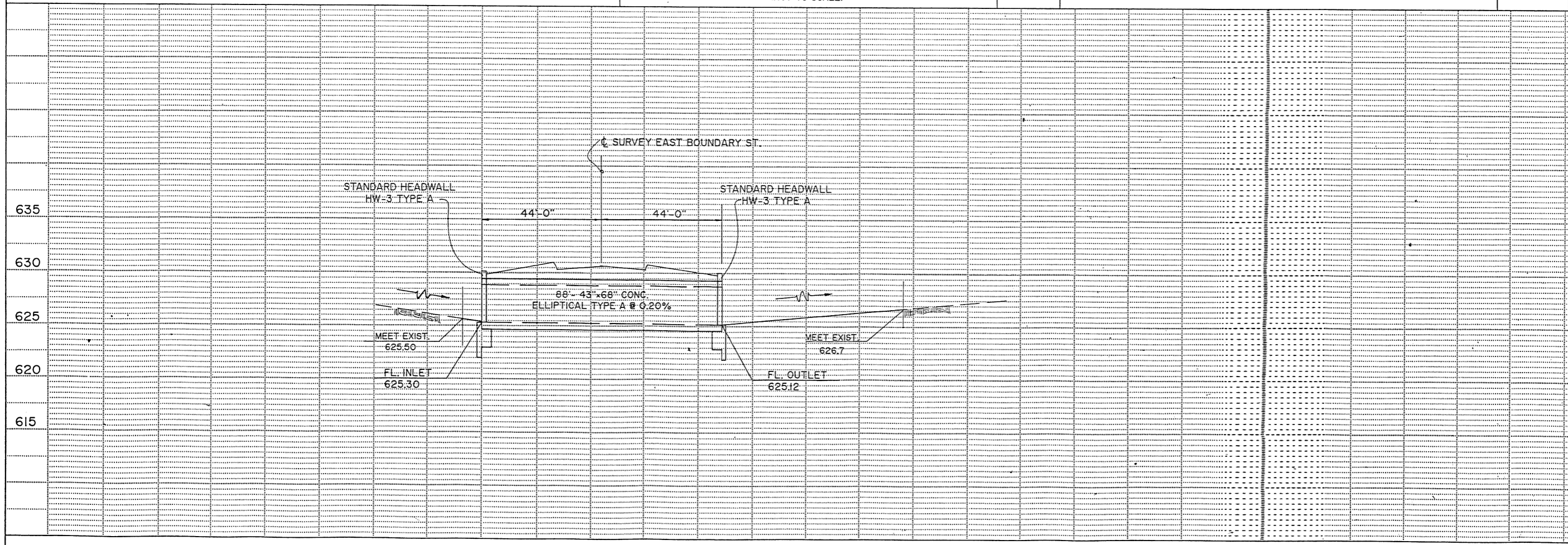


PLAN

DATE	
BY	
SURVEYED	
PLOTTED	
CHECKED	
DATE	
BY	
NOTE BOOK NO.	

PROFILE

DATE	
BY	
SURVEYED	
PLOTTED	
CHECKED	
DATE	
BY	
NOTE BOOK NO.	



McDONNELL
PROUDFOOT &
CULV
& F
STA 1+14 EAS
DESIGNED DRAWN TRACED
SRB

3 OWNERSHIPS
TOTAL TAKES
OWNERSHIPS WITH STRUCTURES INVOLVED
OWNERSHIP WITH "P" ITEMS

DATE 3/4/71
CHKD. BY JHY
DATE 3-5-71
FEDERAL PROJECT
WOOD COUNTY
S. BOUNDARY ST./E. B
STATE PROJ

SUMMARY OF ADDITIONAL RIGHT-OF-WAY

PARCEL	OWNER	SHEET NO.	OWNER'S RECORD		RECORD AREA	TOTAL P.R.O.	GROSS TAKE	P.R.O. IN TAKE	NET TAKE	STRUCTURE	NET RESIDUE		TYPE FUND	REMARKS AND PERSONALITY
			BOOK	PAGE							LEFT	RIGHT		
1-S	THE PERRYSBURG BOARD OF EDUCATION	37	275 281	582 & 437	14 ± ACRES	0	0.065 ACRES	0	0.065 ACRES			13.935 ± ACRES		SEWER EASEMENT TO CONSTRUCT PROPOSED SEWER
100 WA	PHILIP H. & SALLY L. VAN DYNE	62	524	859	1.013 ± ACRES	0	0.018 ACRES	0	0.018 ACRES					WORK AGREEMENT TO CONSTRUCT PROPOSED SWALE
101 SL	THE PERRYSBURG BOARD OF EDUCATION	25 & 26	404	234	45.38 ACRES	0	0.101 ACRES	0	0.101 ACRES			45.279 ACRES		SLOPE EASEMENT TO CONSTRUCT PROPOSED SLOPES

PLAN COMPLETION DATE: _____

REVISION	DATE	DESCRIPTION