

O.D.O.T. DISTRICT 2 SURVEY OFFICE (USE ONLY)

PERSONNEL

REFERENCE NO. 65

SHEET 48 OF 58

NOTES STONE DATE 9/3/76
H.C. NEUSER WEATHER FAIR
R.C. CURTIS TEMP. 65°

ROUTE SR 184
COUNTY LUCAS
TOWNSHIP CITY OF TOLEDO
SECTION 7
T 9 S R 8 E

DWG BY NIESE PID _____

TYPE MONUMENT BRASS CAP

ON SURFACE - ~~BELOW~~ ON

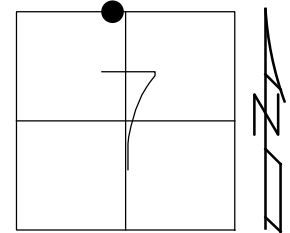
OFFSET \odot PAVEMENT ON _____ LT : RT

- TO - EDGE PAVEMENT

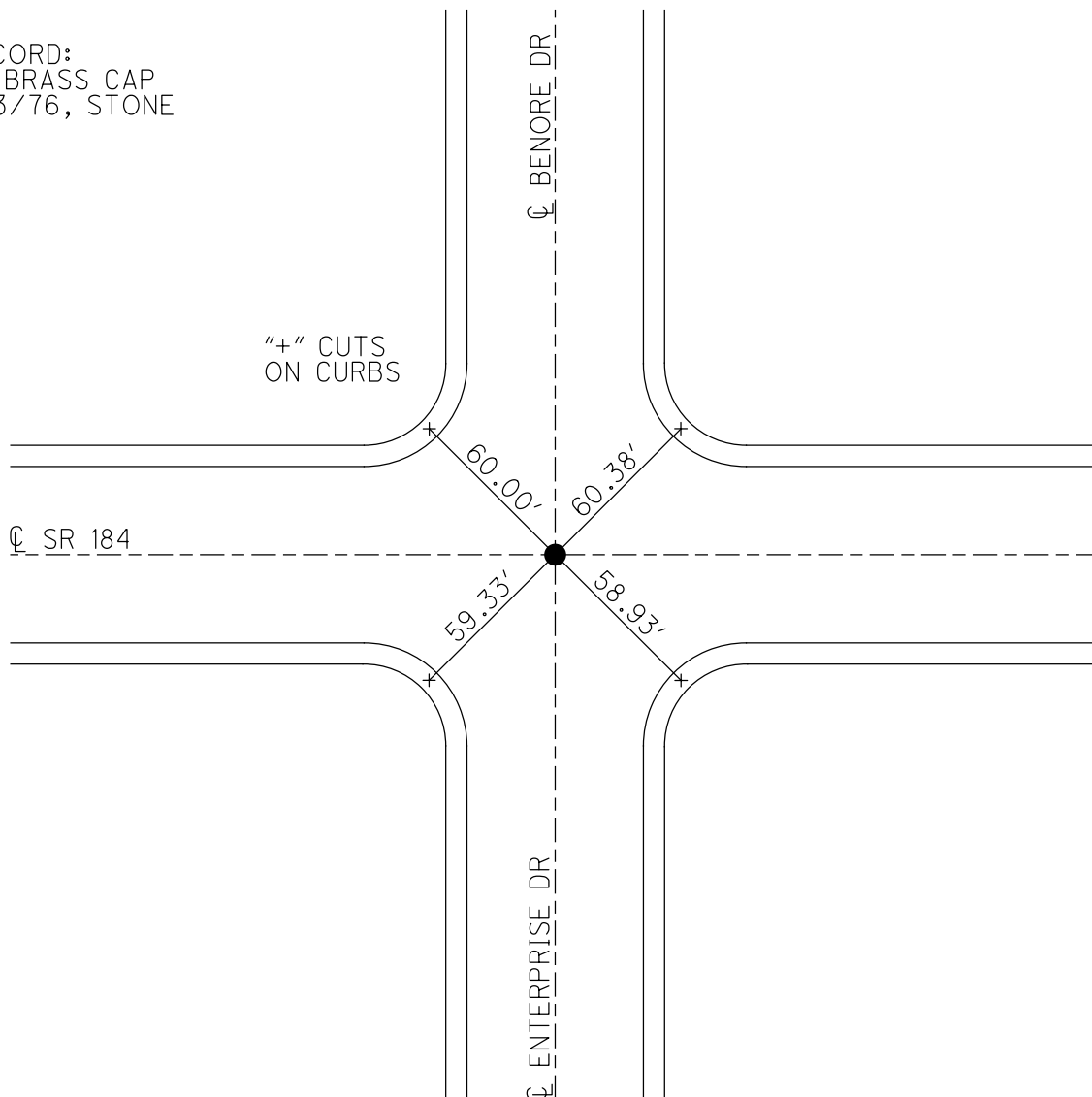
STATION: 1084+33.82

HORIZ.DATUM: _____ GEOID: _____

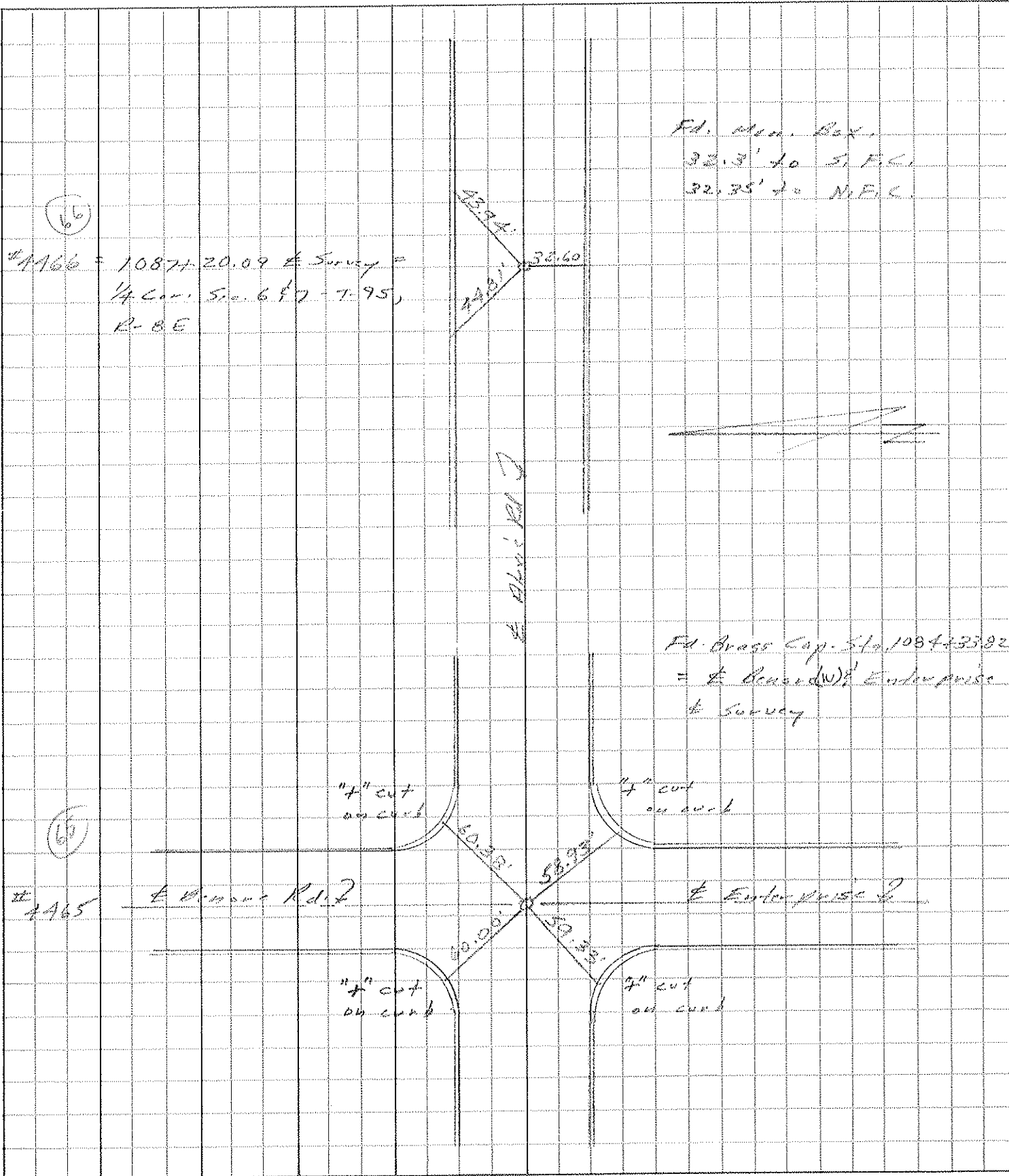
GRID: NORTHING: _____ EASTING: _____



RECORD:
FD BRASS CAP
9/3/76, STONE



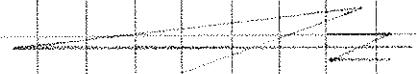
PERSONNEL	TITLE	PERSONNEL	TITLE	COUNTY	DATE	S. R.	WEATHER	TEMP.	JOB NO.
Staver				Lucas	3 Sep. 76	184	Fair	63°	
Neuser									
Gurtis									
DESCRIPTION				References to Control Points				JOB NO.	
LEFT		CENTER LINE		RIGHT					



(66)

#1166 = 10874-20.09 E Survey =
1/4 Cor. S. 68° 7' - T. 95,
R. - 8 E

Fd. Man. Box,
32.3' to S.F.C.,
32.35' to N.F.C.



Fd. Brass Cap. S. to 108443382
= E. Centerline Enterprise
to Survey

(65)

#1465

E. Alexis Rd. 2

E. Enterprise Rd.

7" cut
on curb

7" cut
on curb

7" cut
on curb

7" cut
on curb