

O.D.O.T. DISTRICT 2 SURVEY OFFICE (USE ONLY)

PERSONNEL _____

REFERENCE NO. 66

SHEET 49 OF 58

NOTES STONE

DATE 9/3/76

ROUTE SR 184

H.C. NEUSER

WEATHER FAIR

COUNTY LUCAS

R.C. CURTIS

TEMP. 65°

TOWNSHIP CITY OF TOLEDO

SECTION 7

DWG BY NIESE PID _____

T 9 S R 8 E

TYPE MONUMENT MONBOX

ON SURFACE - ~~BELOW~~ ON

OFFSET ☉ PAVEMENT ON _____ LT : RT

32.3' TO RT EDGE PAVEMENT

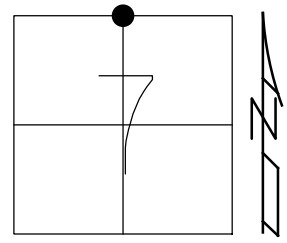
STATION: 1087+20.09

HORZ.DATUM: _____

GEOID: _____

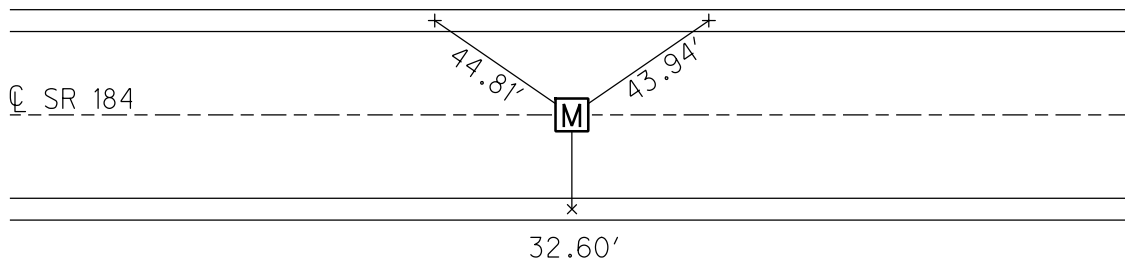
GRID: NORTHING: _____

EASTING: _____

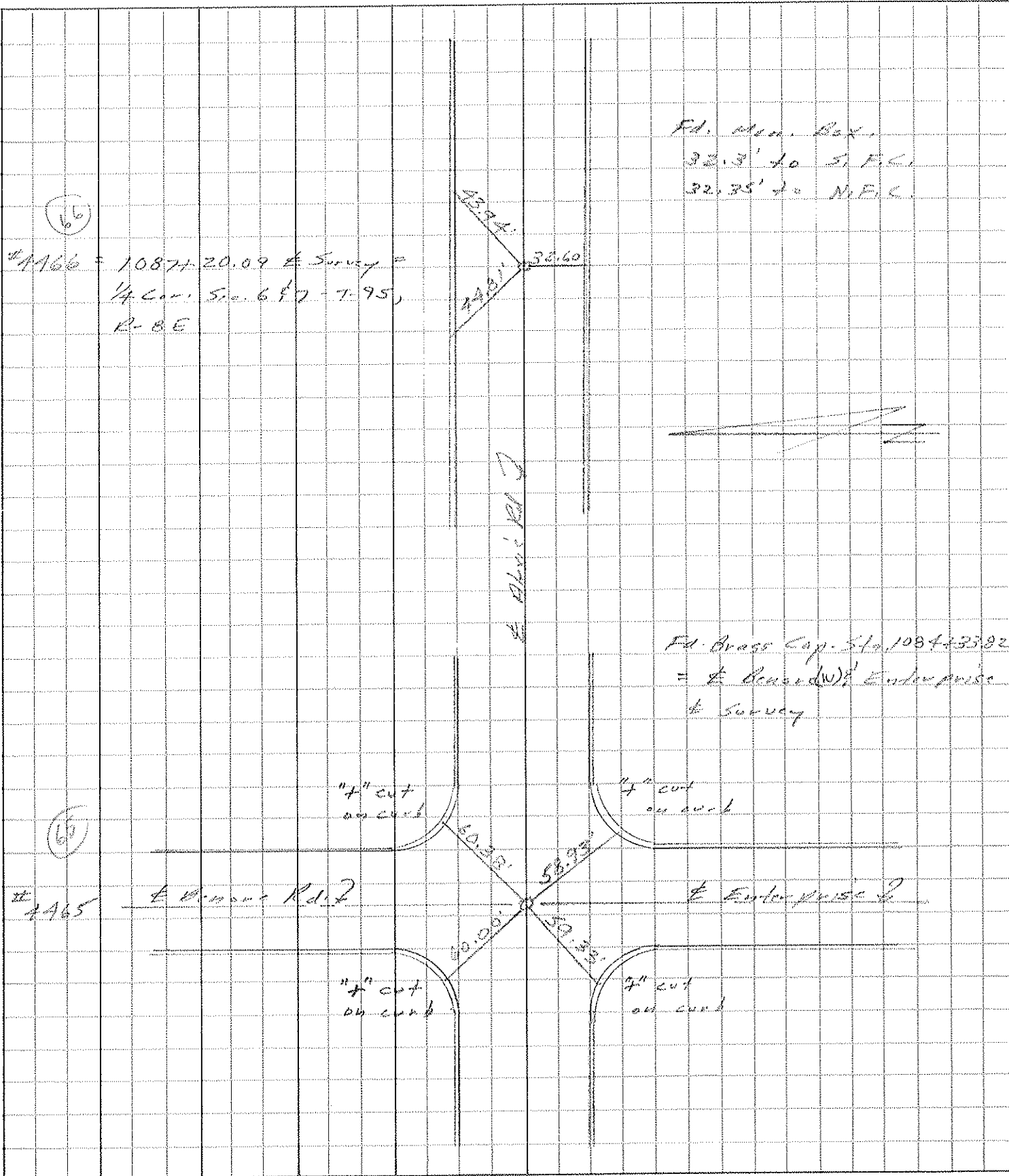


RECORD:
FD MONBOX
9/3/76, STONE

"+" CUTS
ON CURBS



PERSONNEL	TITLE	PERSONNEL	TITLE	COUNTY	DATE
Staver				Lucas	3 Sep. 76
Neuser				S. R. 184	WEATHER Fair
Gurtis				SEC. Alexis Rd. (New)	TEMP. 63°
DESCRIPTION				References to Control Points	
LEFT		CENTER LINE		RIGHT	



(66)

#1166 = 10874-20.09 E Survey =
 1/4 Cor. S. 68° 7' - T. 95,
 R. 8 E

Fd. Man. Box,
 32.3' to S.F.C.,
 32.35' to N.F.C.



Fd. Brass Cap. S. 1084-3382
 = E. Centerline Enterprise
 to Survey

(65)

#1465

E Alexis Rd.

E Enterprise Rd.

7" cut
on curb

7" cut
on curb

7" cut
on curb

7" cut
on curb