

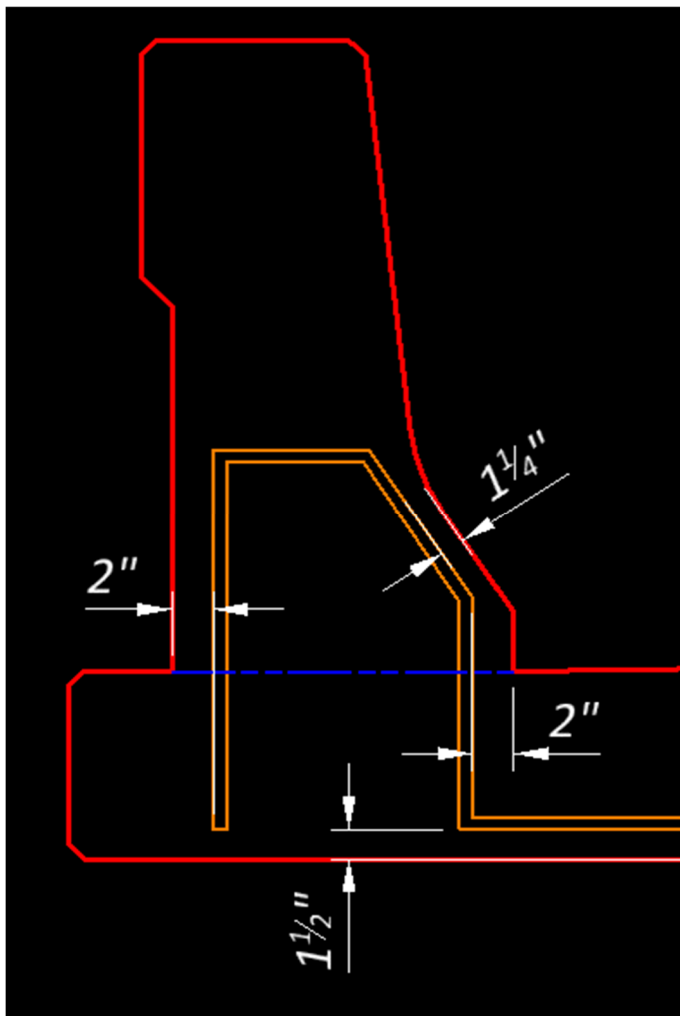
## ODOT PROJECT 190108

### REBAR CLEARANCE ISSUE – 0029L

#### DRB ADVISORY OPINION AMENDED DOCUMENTATION

KCC Position – In our opinion, the recent discovery of additional detailing errors associated with the S5149 bars completely explains what KCC and ODOT witnessed in the field. Our position has always been that when contractual tolerances are considered, the thin coverage over bar S5149 could be explained. The new information demonstrates that prior to applying any of the contractual tolerances for placement and construction we started with 1.25" of coverage over the S5149 bars. See detail below.

The fact that the coverage was documented as +/- 1" for the duration of the wall confirms that KCC crews were very consistent in the slipforming of the railing and well within the contractual tolerances allowed in C&MS 509 & 511.



C&MS 509.04.D – Placement tolerance from the surface is (-0", +1/2")

C&MS Table 511.08-1 – Reinforcing steel cover tolerance when slipforming railing is (-1/2", +1/2")