

STATE OF OHIO

DEPARTMENT OF TRANSPORTATION

SUM-76-10.00

MAIN/BROADWAY INTERCHANGE

CITY OF AKRON, SUMMIT COUNTY

PROJECT DESCRIPTION

THIS PROJECT CONSISTS OF MAJOR RECONFIGURATION OF AN URBAN INTERCHANGE, IR 76 AND ASSOCIATED ROADWAYS, SOUTH MAIN STREET AND SOUTH BROADWAY STREET. APPROXIMATELY 0.98 MILES OF IR 76, 2.02 MILES OF LOCAL ROADS, AND 9 BRIDGES ARE TO BE RECONSTRUCTED. THIS WORK ALSO CONSISTS OF THE INSTALLATION OF NEW TRAFFIC SIGNALS, NECESSARY TRAFFIC CONTROL DEVICES, INTERCHANGE AND LOCAL STREET LIGHTING, UTILITY RELOCATION, DRAINAGE, RIGHT OF WAY ACQUISITION, AND BUILDING DEMOLITION.

PROJECT EARTH DISTURBED AREA: 75.8 ACRES
 ESTIMATED CONTRACTOR EARTH DISTURBED AREA: 2.9 ACRES
 NOTICE OF INTENT EARTH DISTURBED AREA: N/A*
 *RUNOFF IS COLLECTED IN A COMBINED SEWER THEREFORE A NOI IS NOT REQUIRED.

LIMITED ACCESS

THIS IMPROVEMENT IS ESPECIALLY DESIGNED FOR THROUGH TRAFFIC AND HAS BEEN DECLARED A LIMITED ACCESS HIGHWAY OR FREEWAY BY ACTION OF THE DIRECTOR IN ACCORDANCE WITH THE PROVISIONS OF SECTION 5511.02 OF THE OHIO REVISED CODE.

2013 SPECIFICATIONS

THE STANDARD SPECIFICATIONS OF THE STATE OF OHIO, DEPARTMENT OF TRANSPORTATION, INCLUDING CHANGES AND SUPPLEMENTAL SPECIFICATIONS LISTED IN THE PROPOSAL SHALL GOVERN THIS IMPROVEMENT.

I HEREBY APPROVE THESE PLANS AND DECLARE THAT THE MAKING OF THIS IMPROVEMENT WILL REQUIRE THE PART-TIME CLOSING OF THE HIGHWAY TO TRAFFIC, AS NOTED ON THE SHEETS 88 TO 105. DURING WHICH TIME DETOURS WILL BE PROVIDED AS SHOWN HEREIN. PROVISIONS FOR THE MAINTENANCE AND SAFETY OF TRAFFIC WILL BE AS SET FORTH ON THE PLANS AND ESTIMATES.

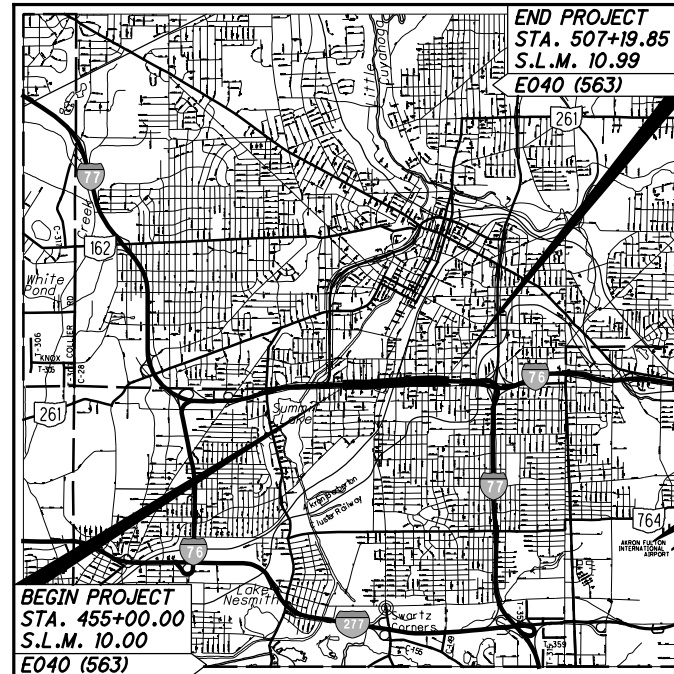
APPROVED *[Signature]*
 DATE 12-2-13 DISTRICT DEPUTY DIRECTOR

APPROVED *[Signature]*
 DATE 1-9-14 DIRECTOR, DEPARTMENT OF TRANSPORTATION

APPROVED *[Signature]*
 DATE 8/6/15 BUREAU OF WATER SUPPLY MANAGER

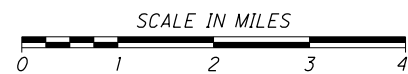
APPROVED *[Signature]*
 DATE 8/6/15 CITY ENGINEER

APPROVED *[Signature]*
 DATE 8/6/15 DIRECTOR OF PUBLIC SERVICE



LOCATION MAP

LATITUDE: N41°03'45" LONGITUDE: W81°31'40"



PORTION TO BE IMPROVED	-----
INTERSTATE HIGHWAY	-----
FEDERAL ROUTES	-----
STATE ROUTES	-----
COUNTY & TOWNSHIP ROADS	-----
OTHER ROADS	-----

DESIGN DESIGNATION

SEE SHEET 3

DESIGN EXCEPTIONS

DESIGN FEATURE	APPROVAL DATES	SHEET NUMBERS
THORNTON AVENUE		
VERTICAL ALIGNMENT	NOVEMBER 12, 2014	606 & 608

UNDERGROUND UTILITIES

CONTACT BOTH SERVICES
 CALL TWO WORKING DAYS
BEFORE YOU DIG

CALL
1-800-362-2764
 (TOLL FREE)

OHIO UTILITIES PROTECTION SERVICE
 NON-MEMBERS
 MUST BE CALLED DIRECTLY

OIL & GAS PRODUCERS UNDERGROUND
 PROTECTION SERVICE CALL: **1-800-925-0988**

PLAN PREPARED BY:

 564 WHITE POND DRIVE
 AKRON, OHIO 44320

ENGINEERS SEAL:

SIGNED: _____
 DATE: _____

REV. BY	DATE	DESCRIPTION
KMK	5/5/16	SCD DATES REVISED
DATE COMPLETED		
STANDARD CONSTRUCTION DRAWINGS		
BP-2.1	7/17/15	MGS-1.1 7/19/13 A-1-69 7/19/02 MT-95.30 7/18/14 TC-7.65 10/18/13 800-2013 1/15/16
BP-2.2	7/18/08	MGS-2.1 7/19/13 AS-1-81 1/18/13 MT-95.40 7/18/14 TC-9.10 1/17/14 804 1/16/15
BP-2.3	7/18/14	MGS-2.3 7/18/14 BR-2-98 7/20/12 MT-95.41 7/18/14 TC-12.30 10/18/13 815 1/19/07
BP-2.5	7/19/13	MGS-3.1 7/18/14 EXJ-4-87 7/19/02 MT-95.50 10/16/15 TC-16.21 10/18/13 816 1/20/12
BP-3.1	7/18/14	MGS-3.2 1/18/13 GSD-1-96 7/19/02 MT-95.71 7/19/13 TC-21.10 10/18/13 823 7/18/14
BP-4.1	7/19/13	MGS-4.2 7/19/13 NBS-1-09 7/17/15 MT-98.10 7/18/14 TC-21.20 1/16/15 832 1/17/14
BP-5.1	7/19/13	MGS-4.3 1/18/13 PCB-91 1/18/13 MT-99.20 7/19/13 TC-21.50 1/15/16 833 7/17/15
BP-7.1	7/18/14	MGS-5.2 7/19/13 SBR-1-13 1/17/14 MT-100.00 7/19/13 TC-22.10 10/18/13 836 1/18/13
BP-9.1	7/19/13	MGS-6.1 7/19/13 SBR-2-13 1/17/14 MT-101.60 7/19/13 TC-22.20 1/17/14 839 7/17/15
		MGS-6.2 1/18/13 SJCD-1-96 7/18/14 MT-101.70 1/17/14 TC-41.10 7/19/13 840 7/17/15
CB-1.1	1/18/13	GR-6.3 1/20/12 SJCD-2-14 7/18/14 MT-102.10 7/18/14 TC-41.20 10/18/13 902 12/31/12
CB-1.2	1/18/13	VPF-1-90 7/17/15 MT-102.20 7/18/14 TC-41.30 10/18/13 904 1/16/15
CB-2.1	1/18/13	HW-2.1 7/17/15 MT-102.30 10/16/15 TC-41.40 10/18/13 906 10/15/10
CB-2.2	1/17/14	HW-2.2 7/17/15 HL-10.11 1/17/14 TC-41.41 10/18/13 907 1/20/12
CB-2.3	1/18/13	HL-10.12 1/17/14 TC-41.50 10/18/13 939 7/17/15
CB-3.1	1/18/13	I-2.1 1/17/14 HL-10.13 7/17/15 TC-42.10 10/18/13 992 4/18/14
CB-3.2	1/18/13	I-2.2 1/17/14 HL-10.31 7/17/15 TC-42.20 10/18/13
CB-4.2	1/18/13	I-2.3 1/17/14 HL-20.11 1/16/15 TC-51.11 1/17/14
		HL-20.13 1/15/16 TC-51.12 1/17/14
DM-1.1	1/18/13	LA-1.1 10/15/10 HL-20.14 1/16/15 TC-52.10 10/18/13
DM-1.2	1/18/13	HL-20.21 1/17/14 TC-52.20 7/18/14
DM-1.3	7/18/14	MH-1.1 1/18/13 HL-20.24 1/15/16 TC-61.10 1/17/14
DM-3.1	1/18/13	MH-1.2 1/18/13 HL-30.11 1/16/15 TC-61.30 7/18/14
DM-4.1	7/19/13	MH-1.3 1/18/13 HL-30.21 1/17/14 TC-65.10 1/17/14
DM-4.2	7/20/12	MH-3.1 1/18/13 HL-30.22 1/17/14 TC-65.11 7/18/14
DM-4.3	7/19/13	HL-30.31 1/17/14 TC-71.10 1/17/14
DM-4.4	7/20/12	RM-1.1 7/18/14 HL-30.32 1/17/14 TC-72.20 7/18/14
		RM-3.1 7/19/13 HL-30.33 1/17/14 TC-81.21 7/17/15
F-1.1	7/19/13	RM-4.3 7/18/14 HL-30.41 7/18/14 TC-83.20 7/17/15
F-2.1	7/19/13	RM-4.4 7/18/14 HL-40.20 1/16/15 TC-85.10 10/18/13
F-3.1	7/19/13	RM-4.5 7/18/14 HL-50.11 1/16/15 TC-85.20 1/16/15
F-3.3	7/19/13	RM-4.6 7/19/13 HL-50.21 1/16/15
F-3.4	7/19/13	HL-60.11 1/17/14
		WO-1.1 1/18/13 HL-60.12 1/17/14
		WO-1.2 1/18/13 HL-60.21 1/16/15
		HL-60.31 7/17/15

FEDERAL PROJECT NO. **E040 (563)**
 PID NO. **77269**
 CONSTRUCTION PROJECT NO. _____
 RAILROAD INVOLVEMENT **CSX TRANSPORTATION**
AKRON BARBERTON CLUSTER RAILWAY, INC.
SUM-76-10.00
 1
 1822

I:\Projects\Main_Broadway\ROADWAY\Sheets\77269C\T001.dgn 5/5/2016 10:04:41 AM kyle_koppes

ITEM SPECIAL - TACK COAT, TRACKLESS TACK

ITEM SPECIAL - TACK COAT, TRACKLESS TACK FOR INTERMEDIATE COURSE

DESCRIPTION: THIS WORK CONSISTS OF PREPARING AND TREATING A PAVED SURFACE WITH A TRACKLESS TACK ASPHALT EMULSION.

FURNISH MATERIALS ACCORDING TO THE DEPARTMENT'S APPROVED LIST.

MEET ALL REQUIREMENTS OF ITEM 407 TACK COAT IN THE CONSTRUCTION AND MATERIALS SPECIFICATIONS REQUIRED BY THE CONTRACT, EXCEPT AS NOTED BELOW.

MATERIAL: MEET ALL PROPERTIES OF THE APPROVED MANUFACTURER'S TRACKLESS TACK SPECIFICATIONS REQUIREMENTS ON FILE WITH THE LABORATORY AT TIME OF PLACEMENT.

ACCEPTANCE AND SAMPLING OF MATERIALS: SUPPLY CERTIFIED TEST DATA TO THE ENGINEER AND TO THE DISTRICT LABORATORY DEMONSTRATING THE TRACKLESS TACK SUPPLIED WAS TESTED FOR AND MEETS ALL MATERIAL PROPERTIES SHOWN ON THE DEPARTMENT'S APPROVED LIST.

DURING CONSTRUCTION, ODOT PERSONNEL WILL SAMPLE FROM THE DISTRIBUTOR AND SUPPLY TO THE DISTRICT TEST LAB A MINIMUM OF ONE QUART OF TRACKLESS TACK FOR EVERY 25,000 GALLONS USED ON THE PROJECT. THE CONTRACTOR IS RESPONSIBLE FOR SUPPLYING THE PROPER PLASTIC QUART SAMPLING CONTAINER. CLEARLY MARK ON THE SAMPLE WITH THE MANUFACTURER'S NAME, PROJECT NUMBER, AND THE WORDS "TRACKLESS TACK".

EQUIPMENT: FOLLOW MANUFACTURER'S RECOMMENDATIONS FOR CORRECT DISTRIBUTOR SETTINGS. THOROUGHLY CLEAN ALL EQUIPMENT IF PREVIOUSLY USED MATERIAL CHARGE IS DIFFERENT THAN THE PROPOSED MATERIAL.

APPLICATION OF ASPHALT MATERIAL: UNIFORMLY APPLY THE TRACKLESS TACK WITH A DISTRIBUTOR ACCORDING TO THE MANUFACTURER'S INSTRUCTIONS. IF TRACKLESS TACK IS STORED FOR AN EXTENDED PERIOD OF TIME, PRIOR TO APPLICATION, AGITATE OR GENTLY CIRCULATE THE MATERIAL.

ENSURE ALL NOZZLES AND SPRAY PATTERNS ARE IDENTICAL TO ONE ANOTHER ALONG THE DISTRIBUTOR SPRAY BAR. PLACE THE ANGLE OF THE NOZZLE AT A 15 TO 30 DEGREE ANGLE TO THE SPRAY BAR AXIS TO MAXIMIZE OVERLAP OR AS RECOMMENDED BY THE NOZZLE MANUFACTURER. CONTACT THE MANUFACTURER'S REPRESENTATIVE FOR REQUIRED SPRAY NOZZLE SIZE AND DISTRIBUTOR AND NOZZLE SETTINGS.

APPLY AT A RATE OF 0.04 TO 0.1 GALLONS PER SQUARE YARD. DO NOT DILUTE TRACKLESS TACK. RECOMMENDED APPLICATION IS 160°F TO 180°F. DO NOT EXCEED 180°F. THE ENGINEER WILL APPROVE THE QUANTITY, RATE OF APPLICATION, TEMPERATURE, DISTRIBUTOR SETTINGS, AND AREAS TO BE TREATED BEFORE APPLICATION OF THE TRACKLESS TACK COAT. THE ENGINEER WILL DETERMINE THE ACTUAL APPLICATION IN GALLONS PER SQUARE YARD BY A CHECK ON THE PROJECT.

PERFORMANCE OF TRACKLESS TACK: DETERMINE THE TIME TO SET FOR THE MATERIAL TO BECOME TRACKLESS. THE ENGINEER WILL REPORT ANY ISSUES WITH EXCESSIVE TIME TO SET, OR AFTER SET ISSUES WITH STICKINESS, OR PICKUP OF THE TACK TO THE DISTRICT TESTING ENGINEER AND NEW PRODUCT ENGINEER, BRAD YOUNG 614-351-2882.

IF THE CERTIFIED TEST DATA FAILS TO MEET THE LAB TESTING CRITERIA, OR FIELD SAMPLES FAIL TO MEET THE LAB TEST CRITERIA, OR THE TRACKLESS TACK FAILS TO PERFORM SATISFACTORILY IN THE FIELD, AS NOTED ABOVE, THE CONTRACTOR WILL BE REQUIRED TO REPLACE AND SUPPLY ANOTHER APPROVED TRACKLESS TACK PRODUCT FOR THE REMAINDER OF THE PROJECT AT NO ADDITIONAL COST TO THE DEPARTMENT.

ANY FAILING TRACKLESS TACK PRODUCT WILL BE REMOVED FROM THE DEPARTMENT'S APPROVED LIST.

ITEM 451 - 9" REINFORCED CONCRETE PAVEMENT, CLASS QC1, AS PER PLAN "B"

THIS ITEM IS FOR USE AT THE INTERSECTIONS TO RECEIVE DECORATIVE CONCRETE PAVEMENT TREATMENT. THE INTERSECTIONS TO RECEIVE THIS TREATMENT ARE AS FOLLOWS:

- S. MAIN STREET AT MILLER AVENUE
- S. MAIN STREET AT E. THORNTON STREET
- E. THORNTON STREET AT RAMP W-5 AND S. BROADWAY STREET.

THIS WORK IS TO PROVIDE STAMPED AND COLORED REINFORCED CONCRETE PAVEMENT FOR THE CROSSWALKS. THE STAMPED PATTERN SHALL BE BRICK RUNNING BOND AND THE COLOR SHALL BE "RED CLAY".

THIS WORK SHALL CONFORM TO ODOT CMS ITEM 451 UNLESS OTHERWISE NOTED HEREIN.

THE INTERSECTION PAVEMENT SHALL BE BOUNDED BY A DECORATIVE CONCRETE HEADER AS SHOWN ON DETAIL SHEET 801.

FOR CITY'S DECORATIVE PAVEMENT SPEC, SEE SHEET 802.

THIS ITEM 451 9" REINFORCED CONCRETE PAVEMENT, CLASS QC1, AS PER PLAN "B" WILL BE MEASURED BY THE SQUARE YARD OF FINISHED SURFACE COMPLETE IN PLACE. THE ACCEPTED QUANTITIES OF THIS ITEM WILL BE PAID FOR AT THE CONTRACT PRICES DESIGNATED. THE CONTRACT PRICE SHALL INCLUDE ALL LABOR, MATERIAL EQUIPMENT AND INCIDENTAL ITEMS NEEDED FOR EXCAVATION, BACKFILL, REINFORCING STEEL, EXPANSION JOINT MATERIAL, CONTRACTION JOINTS AND OTHER RELATED MISCELLANEOUS ITEMS WILL NOT BE PAID FOR SEPARATELY, BUT THE COST THEREOF SHALL BE INCLUDED IN THE COST OF THE ITEM OF WHICH THEY ARE A PART. PAYMENT FOR ACCEPTED QUANTITIES WILL BE MADE AT THE CONTRACT PRICE FOR: THIS ITEM 451 9" REINFORCED CONCRETE PAVEMENT, CLASS QC1, AS PER PLAN "B" (SQUARE YARD). THIS ITEM WILL BE PAID 100% CITY OF AKRON COSTS.

ITEM 451 REINFORCED CONCRETE PAVEMENT, MISC.: CONCRETE HEADER

THIS ITEM IS FOR USE AT THE INTERSECTIONS TO RECEIVE DECORATIVE CONCRETE PAVEMENT TREATMENT. THE INTERSECTIONS TO RECEIVE THIS TREATMENT ARE AS FOLLOWS:

- S. MAIN STREET AT MILLER AVENUE
- S. MAIN STREET AT E. THORNTON STREET
- E. THORNTON STREET AT RAMP W-5 AND S. BROADWAY STREET.

THIS WORK IS TO PROVIDE VISABLE PERMANENT DEMARCATION OF THE CROSS WALK AND SHALL BE PROVIDED ON BOTH SIDES OF THE CROSS WALK TO SEPARATE THE CROSS WALK FROM THE "COAL GRAY" COLORED INTERSECTION PAVEMENT AND THE EITHER EXISTING AND / OR ASPHALT OR CONCRETE APPROACH PAVEMENTS.

THIS WORK SHALL CONFORM TO ODOT CMS ITEM 451 UNLESS OTHERWISE NOTED HEREIN.

THIS HEADER SHALL BE IN ACCORDANCE WITH THE DETAILS PROVIDED ON SHEET 801.

THIS ITEM 451 REINFORCED CONCRETE PAVEMENT, MISC.: CONCRETE HEADER WILL BE MEASURED BY THE SQUARE YARD OF FINISHED SURFACE COMPLETE IN PLACE. THE ACCEPTED QUANTITIES OF THIS ITEM WILL BE PAID FOR AT THE CONTRACT PRICES DESIGNATED. THE CONTRACT PRICE SHALL INCLUDE ALL LABOR, MATERIAL EQUIPMENT AND INCIDENTAL ITEMS NEEDED FOR EXCAVATION, BACKFILL, REINFORCING STEEL, EXPANSION JOINT MATERIAL, CONTRACTION JOINTS AND OTHER RELATED MISCELLANEOUS ITEMS WILL NOT BE PAID FOR SEPARATELY, BUT THE COST THEREOF SHALL BE INCLUDED IN THE COST OF THE ITEM OF WHICH THEY ARE A PART. PAYMENT FOR ACCEPTED QUANTITIES WILL BE MADE AT THE CONTRACT PRICE FOR: THIS ITEM 451 REINFORCED CONCRETE PAVEMENT, MISC.: CONCRETE HEADER (SQUARE YARD). THIS ITEM WILL BE PAID AS 100% COST TO CITY OF AKRON.

FENCE LENGTHS

THE LENGTHS OF FENCE SHOWN IN THE PLANS ARE HORIZONTAL DIMENSIONS. MEASUREMENTS OF THE FINAL QUANTITIES WILL BE IN ACCORDANCE WITH ITEM 607.

SEEDING AND MULCHING

THE FOLLOWING QUANTITIES ARE PROVIDED TO PROMOTE GROWTH AND CARE OF PERMANENT SEEDED AREAS:

659, SOIL ANALYSIS TEST	2	EACH
659, TOPSOIL	22034	CY
659, SEEDING AND MULCHING SEE SHEET 328		
659, REPAIR SEEDING AND MULCHING	9925	SY
659, INTER-SEEDING	9925	SY
659, COMMERCIAL FERTILIZER	27.69	TON
659, LIME	41.01	ACRES
659, WATER	1099	M. GAL.
659, MOWING	447	M. SF

SEEDING AND MULCHING SHALL BE APPLIED TO ALL AREAS OF EXPOSED SOIL BETWEEN THE RIGHT-OF-WAY LINES, AND WITHIN THE CONSTRUCTION LIMITS FOR AREAS OUTSIDE THE RIGHT-OF-WAY LINES COVERED BY WORK AGREEMENT OR SLOPE EASEMENT. QUANTITY CALCULATIONS FOR SEEDING AND MULCHING ARE BASED ON THESE LIMITS.

ITEM 441 - VARIABLE DEPTH ASPHALT CONCRETE INTERMEDIATE COURSE, TYPE 1, (448)

THE FOLLOWING QUANTITY IS BEING CARRIED FORWARD TO THE GENERAL SUMMARY FOR USE IN LOCATIONS NOTED ON THE S. MAIN ST. TYPICAL SECTIONS, WHERE PAVEMENT IS BEING PLANNED AND THE PROPOSED CROSS-SLOPE IS NOT MATCHING EXISTING: 920 CU. YD.

ITEM 622 - CONCRETE BARRIER, SINGLE SLOPE, TYPE C, AS PER PLAN

CONCRETE BARRIER, SINGLE SLOPE, TYPE C, SHALL BE CONSTRUCTED AS PER STANDARD DRAWING RM-4.3 EXCEPT THAT A PAVED GUTTER SHALL BE CONSTRUCTED ON THE HIGH SIDE OF THE BARRIER, SEE DETAIL ON SHEET 22. ALL MATERIALS AND LABOR REQUIRED FOR THE COMPLETE INSTALLATION, INCLUDING THE 2" PEJF, SHALL BE INCLUDED IN THE UNIT PRICE BID PER FOOT OF ITEM 622 CONCRETE BARRIER, SINGLE SLOPE, TYPE C, AS PER PLAN.

ITEM 622 - CONCRETE BARRIER, END ANCHORAGE, REINFORCED, TYPE C, AS PER PLAN

THIS ITEM IS FOR THE END ANCHORAGES THAT WILL BE REQUIRED PER ODOT SCD RM-4.3 AND CALLED FOR IN THE CONTRACT DOCUMENTS. ALL REQUIREMENTS OF ITEM 622, CONCRETE BARRIER, SINGLE SLOPE, TYPE C, AS PER PLAN WILL BE REQUIREMENTS OF ITEM 622, CONCRETE BARRIER, END ANCHORAGE, TYPE C, AS PER PLAN. THE CONTRACT PRICE PER EACH FOR ITEM 622, CONCRETE BARRIER, END ANCHORAGE, TYPE C, AS PER PLAN SHALL INCLUDE ALL LABOR, MATERIAL, EQUIPMENT, AND INCIDENTAL ITEMS NECESSARY FOR THE COMPLETE IN PLACE CONSTRUCTION.

ITEM 622 - CONCRETE BARRIER, SINGLE SLOPE, TYPE D, AS PER PLAN A

CONCRETE BARRIER, SINGLE SLOPE, TYPE D, SHALL BE CONSTRUCTED AS PER STANDARD DRAWING RM-4.5 EXCEPT THAT A FOUNDATION SHALL BE ADDED TO THE BASE OF THE BARRIER, SEE DETAIL ON SHEET 843. ALL MATERIALS AND LABOR REQUIRED FOR THE COMPLETE INSTALLATION SHALL BE INCLUDED IN THE UNIT PRICE BID PER FOOT OF ITEM 622 CONCRETE BARRIER, SINGLE SLOPE, TYPE D, AS PER PLAN A.

ITEM 622 - CONCRETE BARRIER, SINGLE SLOPE, TYPE D, AS PER PLAN B

CONCRETE BARRIER, SINGLE SLOPE, TYPE D, SHALL BE CONSTRUCTED AS PER STANDARD DRAWING RM-4.5 EXCEPT THAT 4'X2" DRAINAGE SLOTS SHALL BE INCLUDED, SEE DETAIL ON SHEET 843. ALL MATERIALS AND LABOR REQUIRED FOR THE COMPLETE INSTALLATION SHALL BE INCLUDED IN THE UNIT PRICE BID PER FOOT OF ITEM 622 CONCRETE BARRIER, SINGLE SLOPE, TYPE D, AS PER PLAN B.

ITEM 622 - CONCRETE BARRIER, END ANCHORAGE, REINFORCED, TYPE D, AS PER PLAN

THIS ITEM IS FOR THE END ANCHORAGES THAT WILL BE REQUIRED PER ODOT SCD RM-4.5 AND CALLED FOR IN THE CONTRACT DOCUMENTS. ALL REQUIREMENTS OF ITEM 622, CONCRETE BARRIER, SINGLE SLOPE, TYPE D, AS PER PLAN B WILL BE REQUIREMENTS OF ITEM 622, CONCRETE BARRIER, END ANCHORAGE, TYPE D, AS PER PLAN. THE CONTRACT PRICE PER EACH FOR ITEM 622, CONCRETE BARRIER, END ANCHORAGE, TYPE D, AS PER PLAN SHALL INCLUDE ALL LABOR, MATERIAL, EQUIPMENT, AND INCIDENTAL ITEMS NECESSARY FOR THE COMPLETE IN PLACE CONSTRUCTION.

ITEM 622 - BARRIER TRANSITION, AS PER PLAN

CONTRACTOR SHALL PROVIDE SMOOTH TRANSITION OVER 14 FEET BETWEEN STANDARD SHAPES OF CONCRETE BARRIER, SINGLE SLOPE, TYPE D AND CONCRETE BARRIER, SINGLE SLOPE, TYPE C, AS PER PLAN. CONCRETE DITCH SHALL BE TERMINATED AND BACKSIDE BARRIER GRADING WILL BE PROVIDED WITH POSITIVE DRAINAGE. FOR TRANSITION DETAIL UNDER THE WOLF LEDGES AND GRANT STREET BRIDGES SEE DETAIL ON SHEET 973 & 974. ALL MATERIALS, EARTHWORK AND LABOR REQUIRED FOR THE COMPLETE INSTALLATION SHALL BE INCLUDED IN THE UNIT PRICE BID PER EACH OF ITEM 622 BARRIER TRANSITION, AS PER PLAN.

ITEM 622 - BARRIER TRANSITION, AS PER PLAN B

CONTRACTOR SHALL PROVIDE SMOOTH TRANSITION OVER THE LENGTH CALLED FOR IN PLAN BETWEEN STANDARD SHAPES OF CONCRETE BARRIER, SINGLE SLOPE, TYPE D ADJACENT THE FORWARD APPROACH SLAB OF BRIDGE NO. SUM-76-1041 L AND CONCRETE BARRIER, SINGLE SLOPE, TYPE B. SEE DETAIL ON SHEET 849. ALL MATERIALS AND LABOR REQUIRED FOR THE COMPLETE INSTALLATION SHALL BE INCLUDED IN THE UNIT PRICE BID PER EACH OF ITEM 622 BARRIER TRANSITION, AS PER PLAN B.

ITEM 622 - CONCRETE BARRIER, SINGLE SLOPE, TYPE D, AS PER PLAN C

CONCRETE BARRIER, SINGLE SLOPE, TYPE D, AS PER PLAN C, SHALL BE CONSTRUCTED AS PER STANDARD DRAWING RM-4.5 EXCEPT FOR THE MODIFICATIONS THAT CAN BE SEEN ON DETAIL SHEET 844. ALL MATERIALS AND LABOR REQUIRED FOR THE COMPLETE INSTALLATION SHALL BE INCLUDED IN THE UNIT PRICE BID PER FOOT OF ITEM 622 CONCRETE BARRIER, SINGLE SLOPE, TYPE D, AS PER PLAN C.

ITEM 622 - BARRIER TRANSITION, AS PER PLAN C

THIS ITEM IS A PERMANANT TAPERED END SECTION WITH STANDARD SHAPES OF CONCRETE BARRIER, SINGLE SLOPE, TYPE B AND CONCRETE BARRIER, SINGLE SLOPE, TYPE C, SEE DETAIL ON SHEET 848. ALL EXTRA PAVEMENT MATERIALS REQUIRED WITHIN THE DETAIL LIMITS SHALL BE INCIDENTAL TO THIS ITEM. ALL MATERIALS AND LABOR REQUIRED FOR THE COMPLETE INSTALLATION SHALL BE INCLUDED IN THE UNIT PRICE BID PER EACH OF ITEM 622 BARRIER TRANSITION, AS PER PLAN C.

ITEM 608 - CURB RAMP, AS PER PLAN A, B, C, D, E, F

THIS ITEM IS FOR USE OF CURB RAMPS THAT ARE TO BE CONSTRUCTED PER CITY OF AKRON STANDARDS AS IDENTIFIED IN THE PLANS. CURRENT CITY OF AKRON STANDARD DRAWINGS ARE PROVIDED IN THE MISCELLANEOUS DETAILS OF THE CONTRACT DOCUMENTS, SHEETS 846-847. ALL OTHER PROVISIONS OF SECTION 608 OF THE CMS SHALL APPLY. PAYMENT FOR ACCEPTED ADJACENT CURBING, TACTILE WARNING STRIPS, AND JOINTS SHALL BE INCLUDED IN THE CONTRACT PRICE PER SQUARE FOOT OF ITEM 608, CURB RAMP, AS PER PLAN, A, B, C, D, E, F. THE CONTRACT PRICE SHALL INCLUDE ALL LABOR, MATERIAL, EQUIPMENT, AND INCIDENTAL ITEMS NECESSARY FOR THE COMPLETE IN PLACE CONSTRUCTION OF ITEM 608, CURB RAMP, AS PER PLAN A, B, C, D, E, F.

ITEM 606 - ANCHOR ASSEMBLY, MGS TYPE E

THIS ITEM SHALL CONSIST OF FURNISHING AND INSTALLING ANY OF THE GUARDRAIL END TERMINALS FOR TYPE MGS GUARDRAIL AS LISTED ON ROADWAY ENGINEERING'S WEB PAGE UNDER ROADSIDE SAFETY DEVICES FOR APPROVED GUARDRAIL END TREATMENTS. INSTALLATION SHALL BE AT THE LOCATIONS SPECIFIED IN THE PLANS, IN ACCORDANCE WITH THE MANUFACTURER'S SPECIFICATIONS.

THE FACE OF THE TYPE E IMPACT HEAD SHALL BE COVERED WITH A SHEET OF TYPE G REFLECTIVE SHEETING, PER CMS 730.19.

I:\Projects\Main_Broadway\ROADWAY\Sheets\77269GN011.dgn 5/4/2016 11:01:19 PM Kyle_Koppes

KMK	5/5/16	BARRIER DIMENSION REVISED- APP "A" REVISED
REV. BY	DATE	DESCRIPTION
DATE COMPLETED		

I:\Projects\Main_Broadway\Drainage\Sheets\77269D5010.dgn 5/5/2016 9:53:23 AM Kyle_Koppes

PLAN SHEET NO.	REFERENCE NO.	STATION		SIDE	PARTICIPATION (01/IMS/PV OR 04/IMS/OT/AKRN)	202	407	441	441	452	202	202	202	202	611	611	611	611	611	611	611	611	611	611	611	SPECIAL	670							
		FROM	TO			PAVEMENT REMOVED	TACK COAT	ASPHALT CONCRETE SURFACE COURSE, TYPE 1, (446), PG64-22	ASPHALT CONCRETE INTERMEDIATE COURSE, TYPE 2, (446)	8" NON-REINFORCED CONCRETE PAVEMENT, CLASS QC MS	PIPE REMOVED, 24" UNDER	PIPE REMOVED, OVER 24"	MANHOLE REMOVED	CATCH BASIN OR INLET REMOVED	12" CONDUIT, TYPE C, 706.02	15" CONDUIT, TYPE B	15" CONDUIT, TYPE C	18" CONDUIT, TYPE B	21" CONDUIT, TYPE B	21" CONDUIT, TYPE C, 706.08	CONDUIT, MISC.: 24" SANITARY SEWER, 706.03 WITH 706.11, CLASS "B" BEDDING	CONDUIT, MISC.: 30" SANITARY SEWER, 706.03 WITH 706.11, CLASS "B" BEDDING	CATCH BASIN, NO. 5	INLET, NO. 3C, AS PER PLAN	INLET, NO. 3 FOR SINGLE SLOPE BARRIER, TYPE B1	INLET, NO. 3 FOR SINGLE SLOPE BARRIER, TYPE D	MANHOLE, NO. 3	MANHOLE, NO. 3, AS PER PLAN (SANITARY)	BACKFLOW PREVENTER, MISC.: FLAP GATE, 15"	DITCH EROSION PROTECTION				
						SY	GAL	CY	CY	SY	FT	FT	EACH	EACH	FT	FT	FT	FT	FT	FT	FT	FT	EACH	EACH	EACH	EACH	EACH	EACH	EACH	SY				
		I.R. 76																																
858	D-47	493+97.00	494+75.79	LT	01/IMS/PV																													
	D-47A	NOT USED			01/IMS/PV																													
858	D-48	493+96.54	494+92.71	RT	01/IMS/PV						87			1																				
858	D-49	495+78.00	495+78.00	RT	01/IMS/PV												8								1									
858	D-50	493+96.00	495+78.00	RT	01/IMS/PV																						1							
858	D-51	494+75.79	497+07.00	LT	01/IMS/PV																													
858 - 859	D-51A	497+07.18	498+73.00	LT	01/IMS/PV																													
858	D-52	494+92.71	496+20.00	RT	01/IMS/PV																													
	D-52A	NOT USED			01/IMS/PV																													
858	D-53	495+78.00	497+85.00	RT	01/IMS/PV																													
858	D-53A	494+81.22	497+49.30	RT	01/IMS/PV						327			2																				
858	D-54	497+85.00	497+85.00	RT	01/IMS/PV																													
858 - 859	D-55	496+20.00	499+00.00	RT	01/IMS/PV																													
858 - 859	D-58	497+85.00	500+92.00	RT	01/IMS/PV																													
859	D-58A	499+92.03	501+99.59	RT	01/IMS/PV						203			1																				
	EC-1	NOT USED			01/IMS/PV																													
	EC-2	NOT USED			01/IMS/PV																													
858	S-73	493+10.22	493+12.75	LT	01/IMS/PV						120								39															
858	S-73A	493+05.02	493+10.22	LT	01/IMS/PV														81															
858	S-74	492+98.71	493+05.02	RT	01/IMS/PV						70	25	1																					
858	S-75	492+87.11	492+98.71	RT	04/IMS/OT/AKRN	79.31	5.95	2.75	6.61	98.86																								
858	S-75A	492+67.70	492+87.11	RT	04/IMS/OT/AKRN	35.15	2.64	1.22	2.93	43.81																								
858	R-48	497+26.85	497+27.19	LT	01/IMS/PV						10																							
859	R-48A	504+13.39	505+19.98	RT	01/IMS/PV						125			1																				
859	D-56	498+73.00	500+40.37	LT	01/IMS/PV																													
859	D-56A	500+07.89	500+70.49	LT	01/IMS/PV						92																							
859	D-56B	500+40.35	500+50.00	LT	01/IMS/PV																													
859	D-57	500+92.00	500+92.26	RT	01/IMS/PV						101																							
859	D-57A	500+07.89	502+49.36	LT	01/IMS/PV																													
859	D-59	499+00.00	500+43.60	RT	01/IMS/PV						242																							
859	D-59A	500+43.60	500+50.00	RT	01/IMS/PV						239																							
859	D-60	503+85.00	504+06.80	RT	01/IMS/PV						161																							
859	D-60A	504+43.45		LT	01/IMS/PV						10																							
859	D-61A	503+85.00	504+09.54	RT	01/IMS/PV																													
859	EC-3	500+00.00	502+00.00	LT	01/IMS/PV																													190
859	EC-4	500+00.00	502+00.00	RT	01/IMS/PV																													167

KMK	5/5/16	D47, D51, D52, STRUCTURE TYPE REVISED
KMS	4/7/16	QUANTITIES REMOVED FOR D-47A, D-52A, EC-1 AND EC-2
REV. BY	DATE	DESCRIPTION
DATE COMPLETED		

SUBTOTALS CARRIED TO	355	-	356	114	9	4	10	143	1787	216	2	12	5	1575	43	206	278	5	120	285	2	5	4	2	6	4	2	357
-----------------------------	------------	----------	------------	------------	----------	----------	-----------	------------	-------------	------------	----------	-----------	----------	-------------	-----------	------------	------------	----------	------------	------------	----------	----------	----------	----------	----------	----------	----------	------------

DRAINAGE / SANITARY SUBSUMMARY

SUM -76 -10.00

CALCULATED
AMP
CHECKED
KMK

338
1822

I:\Projects\Main_Broadway\Drainage\Sheets\77269D5029.dgn 5/5/2016 9:54:36 AM kyle_koppes

SHEET NUMBER																		PARTICIPATION		ITEM	GRAND TOTAL	UNIT	DESCRIPTION	SEE SHEET NO.	CALCULATED AMP CHECKED KMK								
337	338	339	340	341	342	343	344	345	346	347	348	349	350	351	352	353	354	01/IMS/PV	04/IMS/OT/AKRN														
																							DRAINAGE										
			2	1	3	5	4	1		2	3	2	8	6	4	5	4	50		611	50	EACH	CATCH BASIN, NO. 3										
1		4	2	3	2	16	7	12	6	5	12	5	7	9	6	4	9	110		611	110	EACH	CATCH BASIN, NO. 3A										
											2							2		611	2	EACH	CATCH BASIN, NO. 3A, AS PER PLAN	976									
	2	4	4	4	2						1							17		611	17	EACH	CATCH BASIN, NO. 5										
						1			3	1			1	1				7		611	7	EACH	CATCH BASIN, NO. 6										
			1															1		611	1	EACH	CATCH BASIN, NO. 6, AS PER PLAN	975									
							1				1	1	2				1	6		611	6	EACH	CATCH BASIN, NO. 2-2B										
				1														1		611	1	EACH	CATCH BASIN, NO. 2-4										
															1			1		611	1	EACH	CATCH BASIN RECONSTRUCTED TO GRADE										
															1			1		611	1	EACH	INLET, SIDE DITCH										
11	5		1															17		611	17	EACH	INLET, NO. 3C, AS PER PLAN	972									
2			1															3		611	3	EACH	INLET, NO. 3 FOR SINGLE SLOPE BARRIER, TYPE B										
10	4																	14		611	14	EACH	INLET, NO. 3 FOR SINGLE SLOPE BARRIER, TYPE BI										
5	2	2		1				1	1									12		611	12	EACH	INLET, NO. 3 FOR SINGLE SLOPE BARRIER, TYPE D										
5	6	4	2	4	2	13	5	14	9	12	11	3	7	8	5	6	6	122		611	122	EACH	MANHOLE, NO. 3										
			3			2	5	3	1	1	1			2	3			21		611	21	EACH	MANHOLE ADJUSTED TO GRADE										
								2			1	1	1		2			7		611	7	EACH	MANHOLE RECONSTRUCTED TO GRADE										
											1							1		611	1	EACH	WATER QUALITY BASIN, DETENTION, AS PER PLAN	971									
380								22	26					20				448		839	448	FT	TRENCH DRAIN WITH STANDARD GRATE										
																							PAVEMENT										
	9	21				3			1			9	1	3			7	30	24	407	54	GAL	TACK COAT										
	4	10				2			1			4	1	1			3	15	11	441	26	CY	ASPHALT CONCRETE SURFACE COURSE, TYPE 1, (446), PG64-22										
	10	23				4			1			11	1	3			7	34	26	441	60	CY	ASPHALT CONCRETE INTERMEDIATE COURSE, TYPE 2, (446)										
	143	364				60	104	87	19			170	4	56	361		106	686	788	452	1474	SY	8" NON-REINFORCED CONCRETE PAVEMENT, CLASS QC MS										
																							SANITARY										
			152		77		44		168	57				179	565		764	216	911	1311	611	2222	FT	CONDUIT, MISC.: 8" SANITARY SEWER, 707.20, CLASS "NR" BEDDING	50								
			320				283	159			188								550	400	611	950	FT	CONDUIT, MISC.: 10" SANITARY SEWER, 707.20, CLASS "NR" BEDDING	50								
								5											5		611	5	FT	CONDUIT, MISC.: 10" SANITARY SEWER, 706.08 WITH 706.12, CLASS "B" BEDDING	50								
			310						697	461	266	279	512						2165	360	611	2525	FT	CONDUIT, MISC.: 12" SANITARY SEWER, 707.20, CLASS "NR" BEDDING	50								
			72						10										10	72	611	82	FT	CONDUIT, MISC.: 12" SANITARY SEWER, 706.08 WITH 706.12, CLASS "B" BEDDING	50								
																352					611	352	FT	CONDUIT, MISC.: 15" SANITARY SEWER, 706.08 WITH 706.12, CLASS "B" BEDDING	50								
		280	565																727	118	611	845	FT	CONDUIT, MISC.: 18" SANITARY SEWER, 706.08 WITH 706.12, CLASS "B" BEDDING	50								
120	285													66					186	285	611	471	FT	CONDUIT, MISC.: 24" SANITARY SEWER, 706.03 WITH 706.11, CLASS "B" BEDDING	50								
	154																		154		611	154	FT	CONDUIT, MISC.: 24" SANITARY SEWER, 706.08 WITH 706.12, CLASS "B" BEDDING	50								
285						10													104	191	611	295	FT	CONDUIT, MISC.: 30" SANITARY SEWER, 706.03 WITH 706.11, CLASS "B" BEDDING	50								
												266								266	611	266	FT	CONDUIT, MISC.: 42" SANITARY SEWER, 706.03 WITH 706.11, CLASS "B" BEDDING	50								
																	542		542	542	611	542	FT	CONDUIT, MISC.: 54" SANITARY SEWER, 706.03 WITH 706.11, CLASS "B" BEDDING	50								
			121																121		611	121	FT	CONDUIT, MISC.: 66" SANITARY SEWER, 706.03 WITH 706.11, CLASS "B" BEDDING	50								
																212				212	611	212	FT	CONDUIT, MISC.: 24-INCH SANITARY/COMBINED SEWER RECONSTRUCTION BY THE CIPP PROCESS	50								
							1	1		1	1								4		611	4	EACH	MANHOLE, NO. 2, AS PER PLAN (SANITARY)	50								
	4	5	9		1	1	2	1	6	6	3	2	1	4		5	6	40	16	611	56	EACH	MANHOLE, NO. 3, AS PER PLAN (SANITARY)	50									
		2																	2		611	2	EACH	MANHOLE, NO. 5, AS PER PLAN (SANITARY)	50								
		3	1				1	6	3			1	1	1	1	2	2	22		611	22	EACH	MANHOLE ADJUSTED TO GRADE, AS PER PLAN (SANITARY)	50									
		4	1			1		1	1	1		1	1					9	1	611	10	EACH	MANHOLE RECONSTRUCTED TO GRADE, AS PER PLAN (SANITARY)	50									
				1		2	1					2	1	1				8		SPECIAL	8	EACH	BACKFLOW PREVENTER, MISC.: FLAP GATE, 12"	50									
2	2	2												1				7		SPECIAL	7	EACH	BACKFLOW PREVENTER, MISC.: FLAP GATE, 15"	50									
1		1	1			1												4		SPECIAL	4	EACH	BACKFLOW PREVENTER, MISC.: FLAP GATE, 18"	50									
1																		1		SPECIAL	1	EACH	BACKFLOW PREVENTER, MISC.: FLAP GATE, 21"	50									
2																		2		SPECIAL	2	EACH	BACKFLOW PREVENTER, MISC.: FLAP GATE, 24"	50									
				1														1		SPECIAL	1	EACH	BACKFLOW PREVENTER, MISC.: FLAP GATE, 36"	50									
												195						195		638	195	FT	24" STEEL PIPE ENCASEMENT, OPEN CUT										
			100															638	100	638	100	FT	24" STEEL PIPE ENCASEMENT, BORED OR JACKED										
KMK	5/5/16	D47, D51, D52, STRUCTURE TYPE REVISED															101	101	833	101	FT	CONDUIT RENEWAL USING SPRAY APPLIED STRUCTURAL LINER, 54" ROUND CONDUIT, AS PER PLAN	55										
KMS	4/7/16	QUANTITY UPDATED: CATCH BASIN, NO. 5															727	501	833	727	FT	CONDUIT RENEWAL USING SPRAY APPLIED STRUCTURAL LINER, 66" ROUND CONDUIT, AS PER PLAN	55										
REV. BY	DATE	DESCRIPTION																															
		DATE COMPLETED																															
																							NOTE: TOTALS CARRIED TO GENERAL SUMMARY										

DRAINAGE / SANITARY SUBSUMMARY

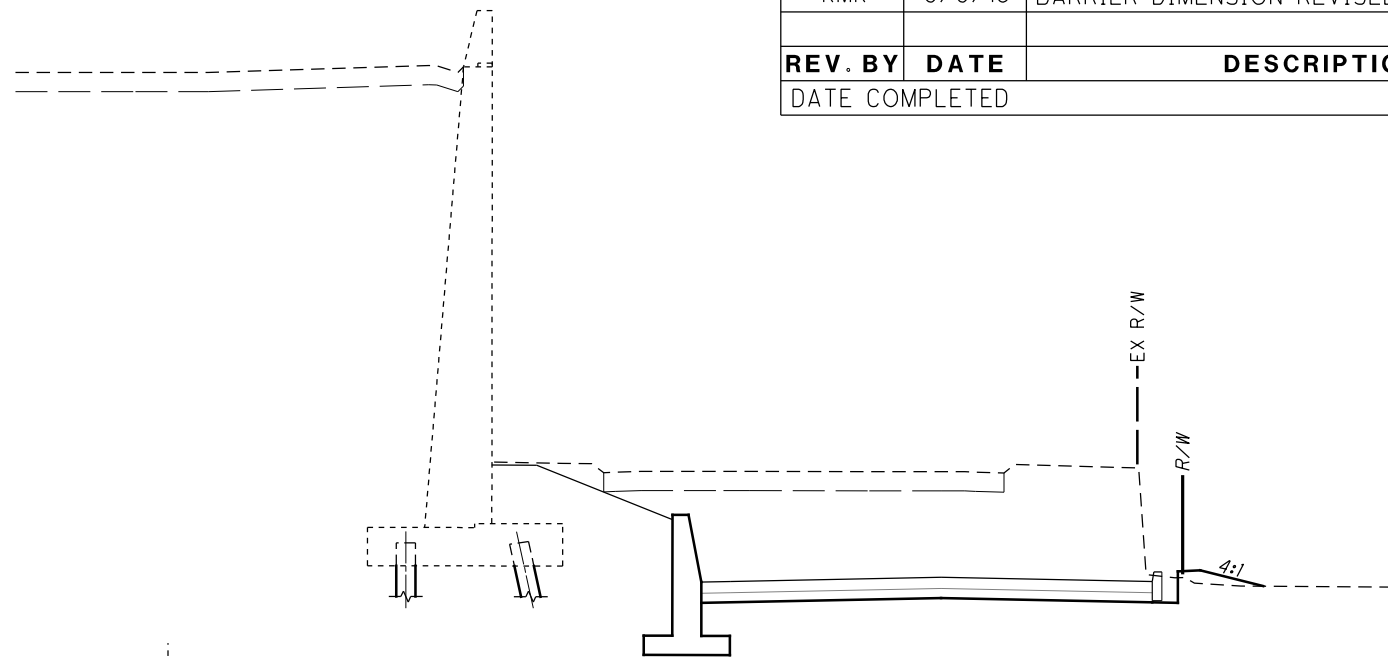
SUM -76 -10.00

356
1822

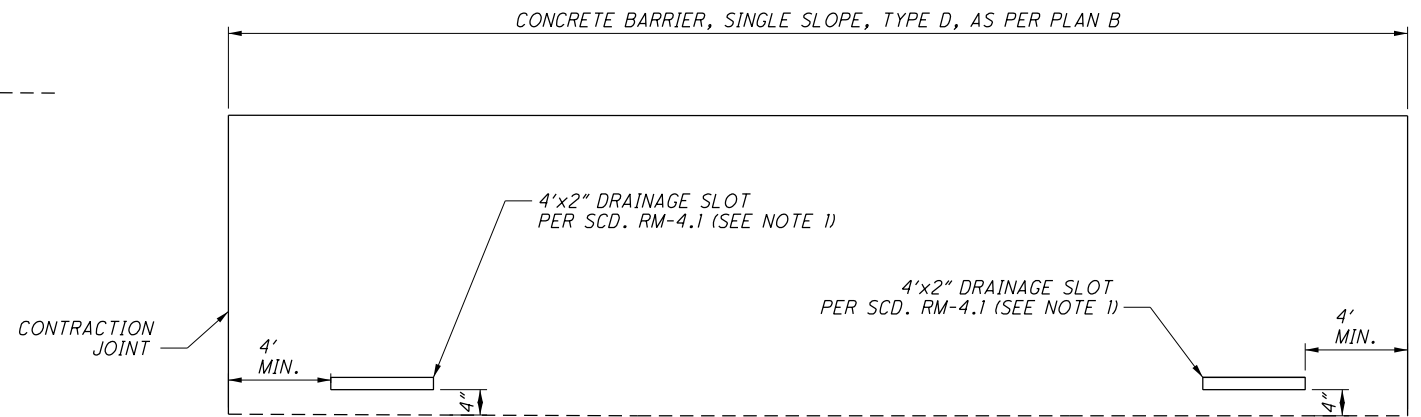
KMK	5/5/16	BARRIER DIMENSION REVISED- APP "A" REVISED
REV. BY	DATE	DESCRIPTION
DATE COMPLETED		

NOTES

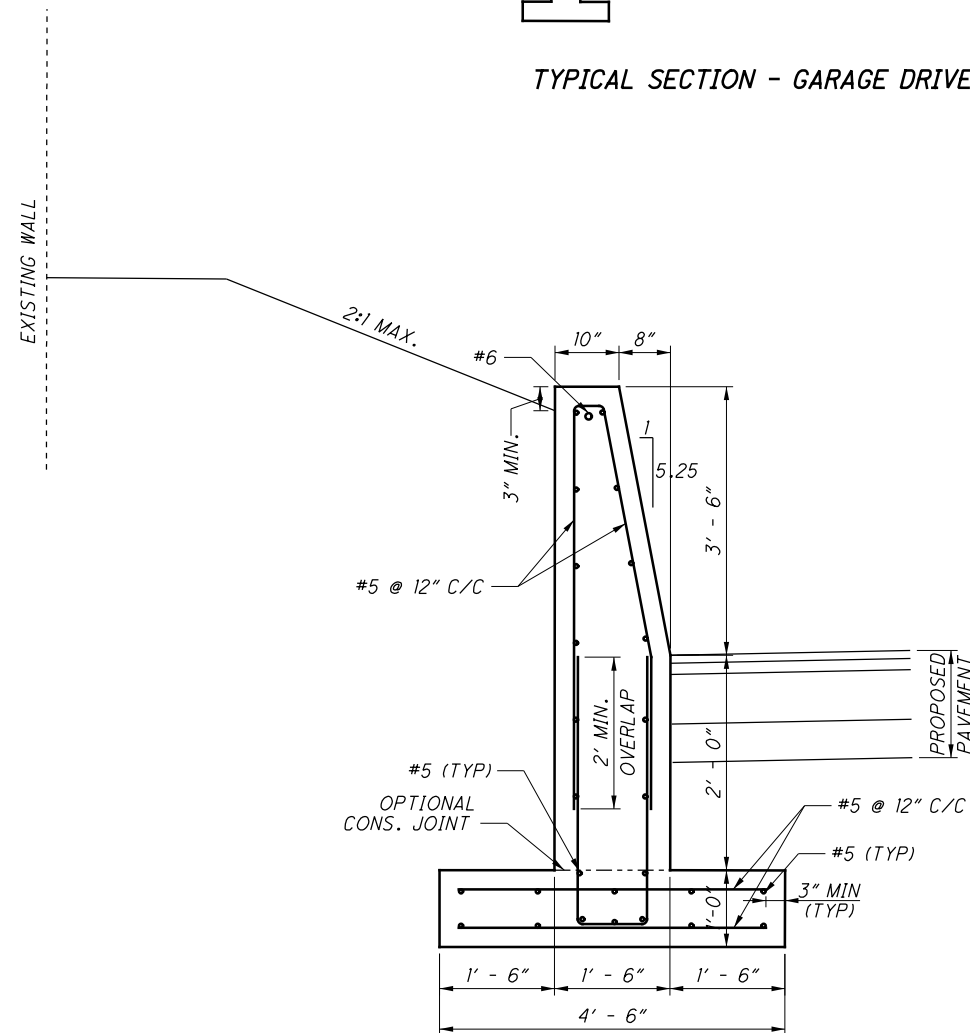
- ALL METHODS AND MATERIALS SHALL CONFORM TO ODOT CMS AND SCD UNLESS OTHERWISE NOTED HEREIN.
- ① DRAINAGE SLOTS SHALL BE PROVIDED AT 2 SLOTS PER 20 FEET OF BARRIER AND SHALL BE LOCATED A MINIMUM OF FOUR FEET (4') FROM A CONTRACTION JOINT AND ADJOINING A DRAINAGE INLET OR BARRIER TRANSITION
 - ② THE SLOPES SHALL BE PLACED SUCH THAT THE RUNOFF CAN FLOW UNDER THE CONCRETE BARRIER, TYPE D, AS PER PLAN B ON TO THE MAINLINE SHOULDER THEN INTO THE MAINLINE SHOULDER INLET



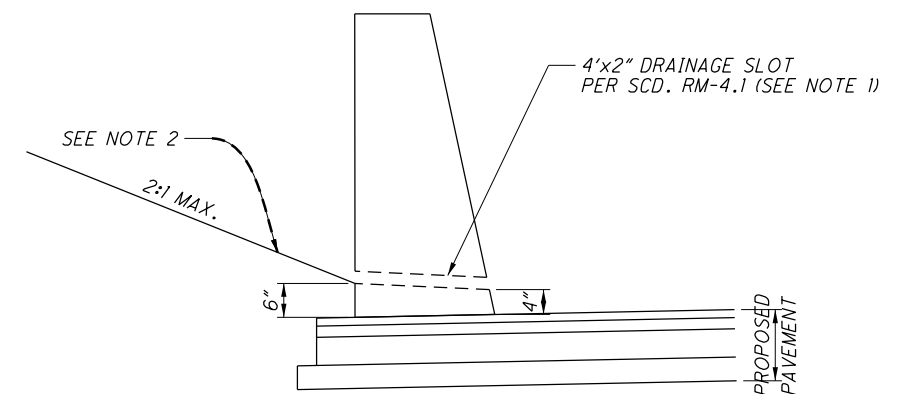
TYPICAL SECTION - GARAGE DRIVE



ELEVATION VIEW
CONCRETE BARRIER,
SINGLE SLOPE,
TYPE D, AS PER PLAN B



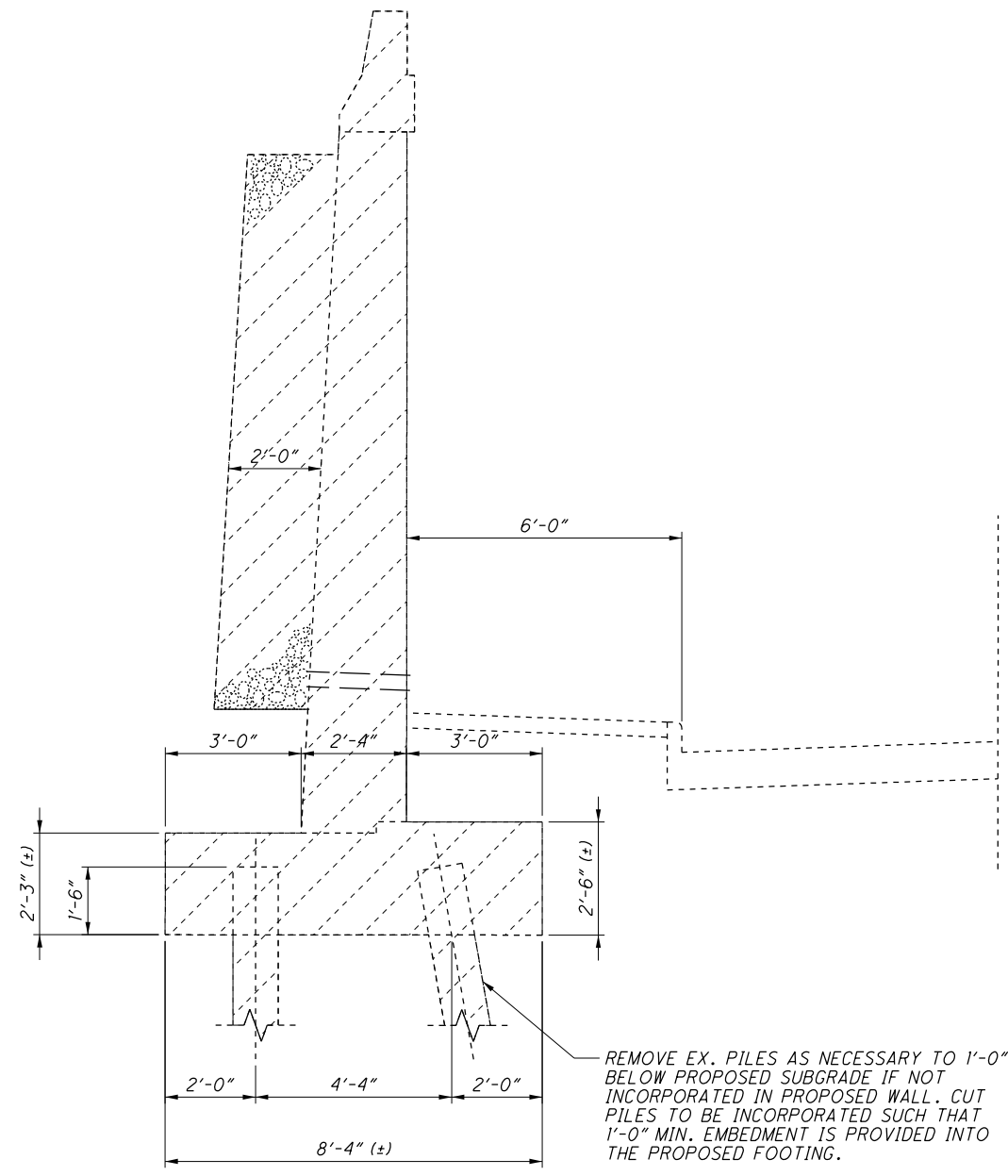
SECTION VIEW
NOT TO SCALE
CONCRETE BARRIER,
SINGLE SLOPE,
TYPE D, AS PER PLAN A



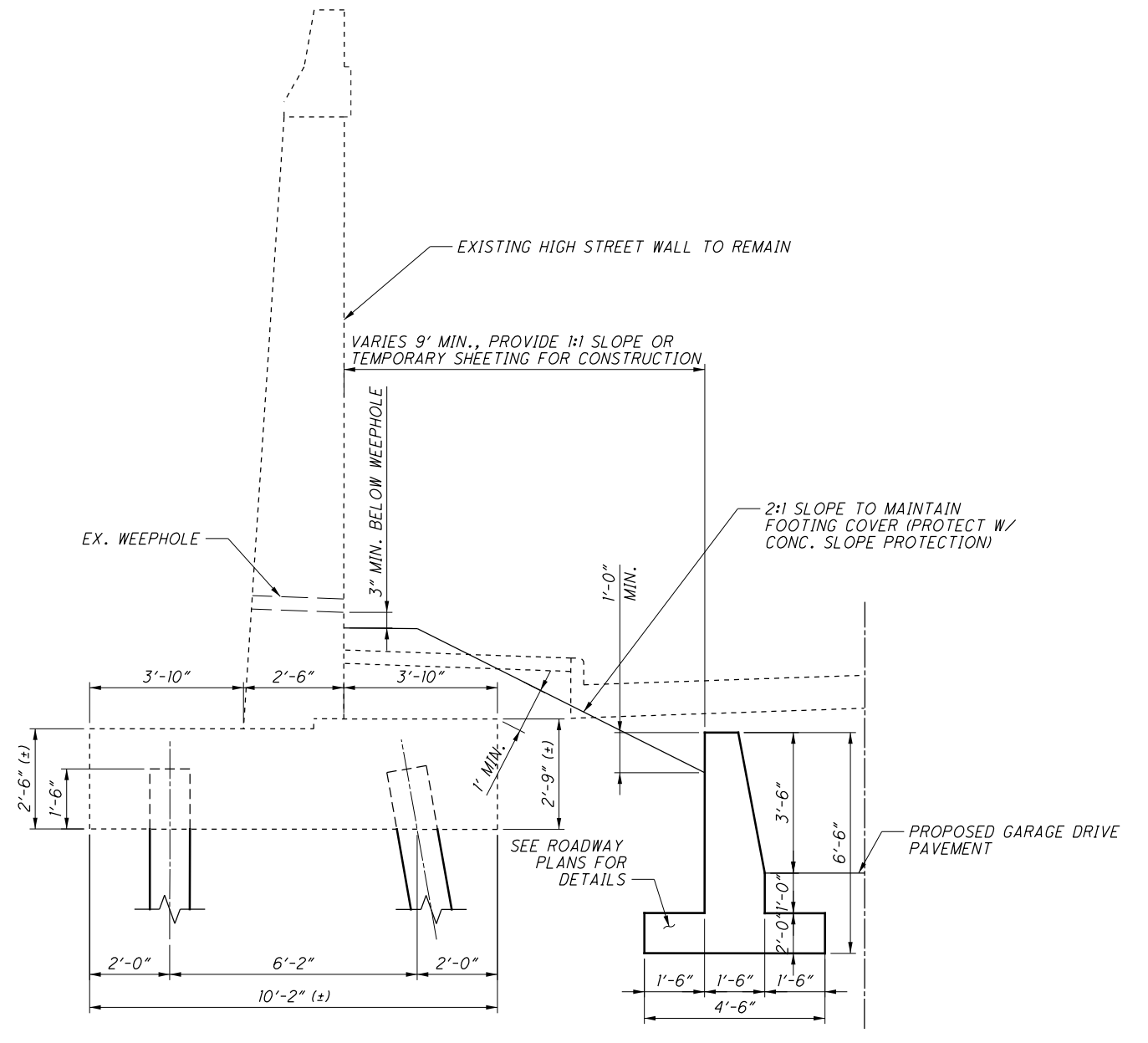
SECTION VIEW
CONCRETE BARRIER,
SINGLE SLOPE,
TYPE D, AS PER PLAN B

THIS MODIFIED BARRIER IS TO BE USED ALONG GARAGE DRIVE.

I:\Projects\Main_Broadway\STRUCTURES\Wall_10\Sheets\77269W10W001.dgn 5/4/2016 10:57:53 PM Kyle_Koppes



B SECTION
1 EXISTING WALL TO BE REMOVED



EXISTING WALL SECTION WITH MODIFIED TYPE D BARRIER

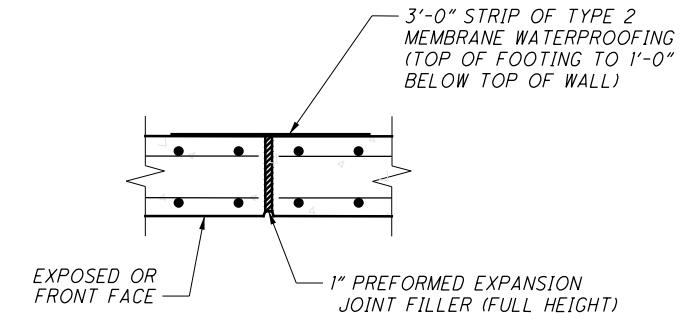
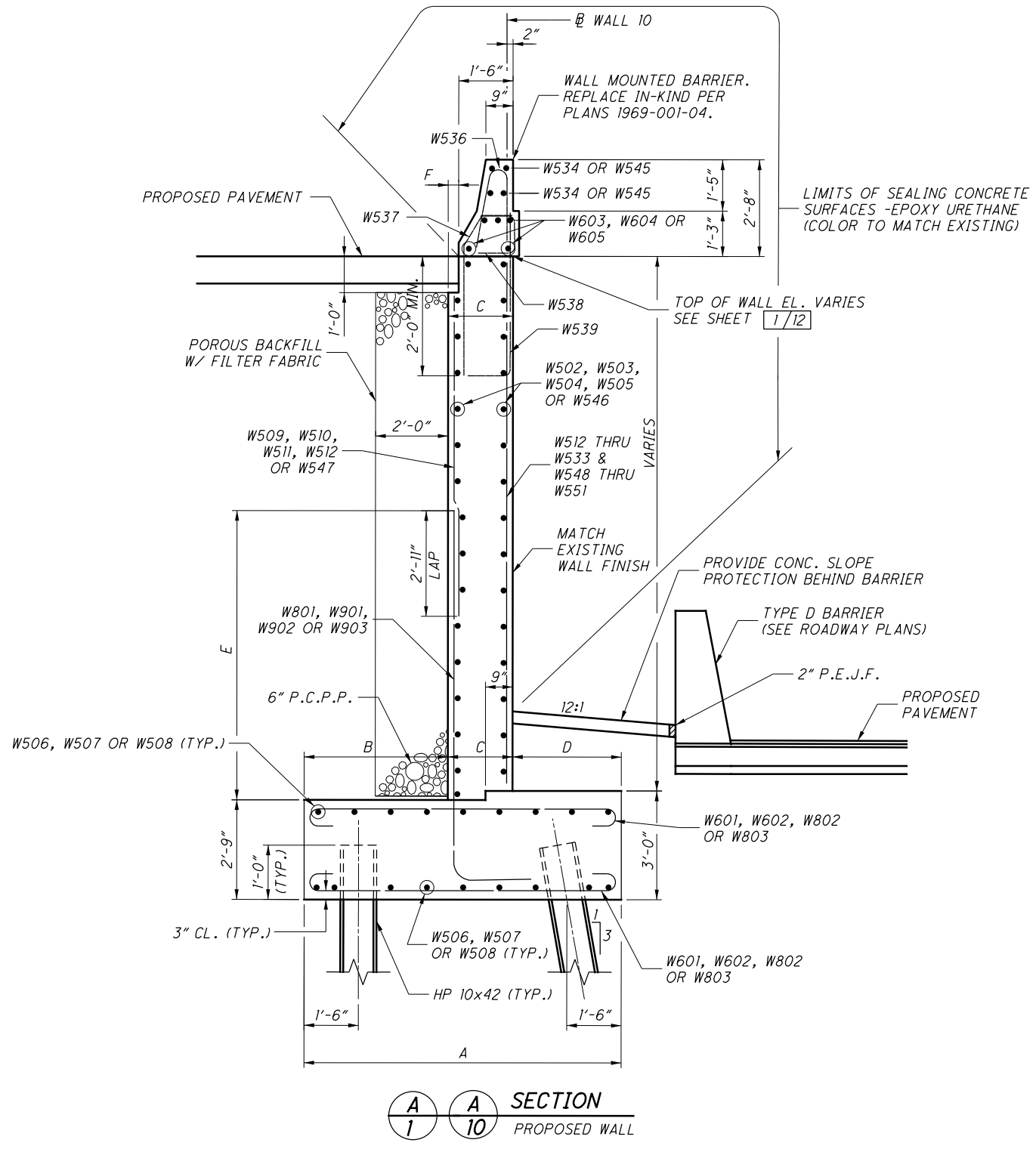
C SECTION
2 EXISTING WALL W/ MOD. TYPE D BARRIER

KMK	5/5/16	BARRIER DIMENSION REVISED
REV. BY	DATE	DESCRIPTION

NOTES:
1. FOR NOTES SEE SHEET 11/12.

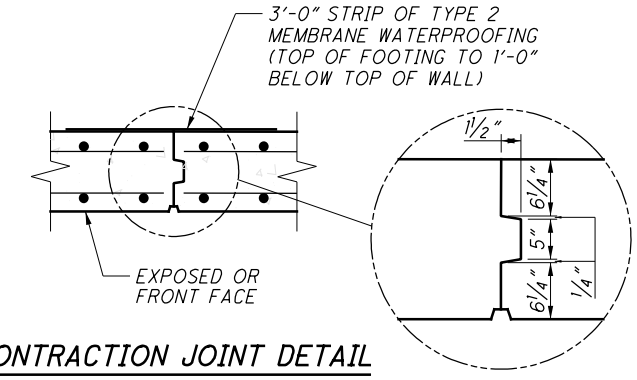
	DESIGN AGENCY	AKRON CLEVELAND COLUMBUS
	DATE	11/14
DRAWN	ERM	REVISED
DESIGNED	SAM	DRC
REVIEWED	BKL	N/A
STRUCTURE FILE NUMBER	N/A	
REMOVAL LIMITS AND EXISTING WALL DETAILS WALL 10 ALONG GARAGE DRIVE AND HIGH STREET		
SUM-76-10.00 PID No. 77269		
3 / 12		

I:\Projects\Main_Broadway\STRUCTURES\Wall_10\Sheets\77269W10W002.dgn 5/5/2016 9:15:43 AM kyle_koppes



EXPANSION JOINT DETAIL

STA. 14+35.00, 14+85.00, 15+35.00, 16+35.39



CONTRACTION JOINT DETAIL

STA. 13+63.50, 13+88.00, 14+11.50, 14+60.00, 15+10.00, 15+69.00, 16+03.00

WALL SECTION	DIMENSIONS					
	A	B	C	D	E	F
①	8'-6"	4'-0"	1'-6"	3'-0"	6'-5"	--
②	8'-6"	4'-0"	1'-6"	3'-0"	6'-5"	--
③	9'-6"	5'-0"	1'-6"	3'-0"	7'-10"	--
④	11'-0"	5'-6"	2'-0"	3'-6"	8'-6"	0'-6"
⑤	11'-10"	5'-6"	2'-6"	3'-10"	9'-0"	1'-0"

NOTES:

1. WALL BASELINE IS LOCATED 2" BEHIND THE FRONT FACE OF WALL.
2. SEE WALL GENERAL NOTES SHEETS 1616/1822 THRU 1618/1822 FOR ADDITIONAL NOTES.
3. PILES SHALL BE DRIVEN TO REFUSAL ON BEDROCK.
4. INCORPORATE EXISTING PILES DENOTED ON FOUNDATION PLAN SHEET 3/9 IN THE PROPOSED FOOTING.

REV. BY	DATE	DESCRIPTION
KMK	5/5/16	PEJF REMOVED - PAVEMENT BUILD-UP REVISED TO MATCH TYPICALS