

ITEM SPECIAL - TACK COAT, TRACKLESS TACK

ITEM SPECIAL - TACK COAT, TRACKLESS TACK FOR INTERMEDIATE COURSE

DESCRIPTION: THIS WORK CONSISTS OF PREPARING AND TREATING A PAVED SURFACE WITH A TRACKLESS TACK ASPHALT EMULSION.

FURNISH MATERIALS ACCORDING TO THE DEPARTMENT'S APPROVED LIST.

MEET ALL REQUIREMENTS OF ITEM 407 TACK COAT IN THE CONSTRUCTION AND MATERIALS SPECIFICATIONS REQUIRED BY THE CONTRACT, EXCEPT AS NOTED BELOW.

MATERIAL: MEET ALL PROPERTIES OF THE APPROVED MANUFACTURER'S TRACKLESS TACK SPECIFICATIONS REQUIREMENTS ON FILE WITH THE LABORATORY AT TIME OF PLACEMENT.

ACCEPTANCE AND SAMPLING OF MATERIALS: SUPPLY CERTIFIED TEST DATA TO THE ENGINEER AND TO THE DISTRICT LABORATORY DEMONSTRATING THE TRACKLESS TACK SUPPLIED WAS TESTED FOR AND MEETS ALL MATERIAL PROPERTIES SHOWN ON THE DEPARTMENT'S APPROVED LIST.

DURING CONSTRUCTION, ODOT PERSONNEL WILL SAMPLE FROM THE DISTRIBUTOR AND SUPPLY TO THE DISTRICT TEST LAB A MINIMUM OF ONE QUART OF TRACKLESS TACK FOR EVERY 25,000 GALLONS USED ON THE PROJECT. THE CONTRACTOR IS RESPONSIBLE FOR SUPPLYING THE PROPER PLASTIC QUART SAMPLING CONTAINER. CLEARLY MARK ON THE SAMPLE WITH THE MANUFACTURER'S NAME, PROJECT NUMBER, AND THE WORDS "TRACKLESS TACK".

EQUIPMENT: FOLLOW MANUFACTURER'S RECOMMENDATIONS FOR CORRECT DISTRIBUTOR SETTINGS. THOROUGHLY CLEAN ALL EQUIPMENT IF PREVIOUSLY USED MATERIAL CHARGE IS DIFFERENT THAN THE PROPOSED MATERIAL.

APPLICATION OF ASPHALT MATERIAL: UNIFORMLY APPLY THE TRACKLESS TACK WITH A DISTRIBUTOR ACCORDING TO THE MANUFACTURER'S INSTRUCTIONS. IF TRACKLESS TACK IS STORED FOR AN EXTENDED PERIOD OF TIME, PRIOR TO APPLICATION, AGITATE OR GENTLY CIRCULATE THE MATERIAL.

ENSURE ALL NOZZLES AND SPRAY PATTERNS ARE IDENTICAL TO ONE ANOTHER ALONG THE DISTRIBUTOR SPRAY BAR. PLACE THE ANGLE OF THE NOZZLE AT A 15 TO 30 DEGREE ANGLE TO THE SPRAY BAR AXIS TO MAXIMIZE OVERLAP OR AS RECOMMENDED BY THE NOZZLE MANUFACTURER. CONTACT THE MANUFACTURER'S REPRESENTATIVE FOR REQUIRED SPRAY NOZZLE SIZE AND DISTRIBUTOR AND NOZZLE SETTINGS.

APPLY AT A RATE OF 0.04 TO 0.1 GALLONS PER SQUARE YARD. DO NOT DILUTE TRACKLESS TACK. RECOMMENDED APPLICATION IS 160°F TO 180°F. DO NOT EXCEED 180°F. THE ENGINEER WILL APPROVE THE QUANTITY, RATE OF APPLICATION, TEMPERATURE, DISTRIBUTOR SETTINGS, AND AREAS TO BE TREATED BEFORE APPLICATION OF THE TRACKLESS TACK COAT. THE ENGINEER WILL DETERMINE THE ACTUAL APPLICATION IN GALLONS PER SQUARE YARD BY A CHECK ON THE PROJECT.

PERFORMANCE OF TRACKLESS TACK: DETERMINE THE TIME TO SET FOR THE MATERIAL TO BECOME TRACKLESS. THE ENGINEER WILL REPORT ANY ISSUES WITH EXCESSIVE TIME TO SET, OR AFTER SET ISSUES WITH STICKINESS, OR PICKUP OF THE TACK TO THE DISTRICT TESTING ENGINEER AND NEW PRODUCT ENGINEER, BRAD YOUNG 614-351-2882.

IF THE CERTIFIED TEST DATA FAILS TO MEET THE LAB TESTING CRITERIA, OR FIELD SAMPLES FAIL TO MEET THE LAB TEST CRITERIA, OR THE TRACKLESS TACK FAILS TO PERFORM SATISFACTORILY IN THE FIELD, AS NOTED ABOVE, THE CONTRACTOR WILL BE REQUIRED TO REPLACE AND SUPPLY ANOTHER APPROVED TRACKLESS TACK PRODUCT FOR THE REMAINDER OF THE PROJECT AT NO ADDITIONAL COST TO THE DEPARTMENT.

ANY FAILING TRACKLESS TACK PRODUCT WILL BE REMOVED FROM THE DEPARTMENT'S APPROVED LIST.

ITEM 451 - 9" REINFORCED CONCRETE PAVEMENT, CLASS QC1, AS PER PLAN "B"

THIS ITEM IS FOR USE AT THE INTERSECTIONS TO RECEIVE DECORATIVE CONCRETE PAVEMENT TREATMENT. THE INTERSECTIONS TO RECEIVE THIS TREATMENT ARE AS FOLLOWS:

- S. MAIN STREET AT MILLER AVENUE
- S. MAIN STREET AT E. THORNTON STREET
- E. THORNTON STREET AT RAMP W-5 AND S. BROADWAY STREET.

THIS WORK IS TO PROVIDE STAMPED AND COLORED REINFORCED CONCRETE PAVEMENT FOR THE CROSSWALKS. THE STAMPED PATTERN SHALL BE BRICK RUNNING BOND AND THE COLOR SHALL BE "RED CLAY".

THIS WORK SHALL CONFORM TO ODOT CMS ITEM 451 UNLESS OTHERWISE NOTED HEREIN.

THE INTERSECTION PAVEMENT SHALL BE BOUNDED BY A DECORATIVE CONCRETE HEADER AS SHOWN ON DETAIL SHEET 801.

FOR CITY'S DECORATIVE PAVEMENT SPEC, SEE SHEET 802.

THIS ITEM 451 9" REINFORCED CONCRETE PAVEMENT, CLASS QC1, AS PER PLAN "B" WILL BE MEASURED BY THE SQUARE YARD OF FINISHED SURFACE COMPLETE IN PLACE. THE ACCEPTED QUANTITIES OF THIS ITEM WILL BE PAID FOR AT THE CONTRACT PRICES DESIGNATED. THE CONTRACT PRICE SHALL INCLUDE ALL LABOR, MATERIAL EQUIPMENT AND INCIDENTAL ITEMS NEEDED FOR EXCAVATION, BACKFILL, REINFORCING STEEL, EXPANSION JOINT MATERIAL, CONTRACTION JOINTS AND OTHER RELATED MISCELLANEOUS ITEMS WILL NOT BE PAID FOR SEPARATELY, BUT THE COST THEREOF SHALL BE INCLUDED IN THE COST OF THE ITEM OF WHICH THEY ARE A PART. PAYMENT FOR ACCEPTED QUANTITIES WILL BE MADE AT THE CONTRACT PRICE FOR: THIS ITEM 451 9" REINFORCED CONCRETE PAVEMENT, CLASS QC1, AS PER PLAN "B" (SQUARE YARD). THIS ITEM WILL BE PAID 100% CITY OF AKRON COSTS.

ITEM 451 REINFORCED CONCRETE PAVEMENT, MISC.: CONCRETE HEADER

THIS ITEM IS FOR USE AT THE INTERSECTIONS TO RECEIVE DECORATIVE CONCRETE PAVEMENT TREATMENT. THE INTERSECTIONS TO RECEIVE THIS TREATMENT ARE AS FOLLOWS:

- S. MAIN STREET AT MILLER AVENUE
- S. MAIN STREET AT E. THORNTON STREET
- E. THORNTON STREET AT RAMP W-5 AND S. BROADWAY STREET.

THIS WORK IS TO PROVIDE VISABLE PERMANENT DEMARCATION OF THE CROSS WALK AND SHALL BE PROVIDED ON BOTH SIDES OF THE CROSS WALK TO SEPARATE THE CROSS WALK FROM THE "COAL GRAY" COLORED INTERSECTION PAVEMENT AND THE EITHER EXISTING AND / OR ASPHALT OR CONCRETE APPROACH PAVEMENTS.

THIS WORK SHALL CONFORM TO ODOT CMS ITEM 451 UNLESS OTHERWISE NOTED HEREIN.

THIS HEADER SHALL BE IN ACCORDANCE WITH THE DETAILS PROVIDED ON SHEET 801.

THIS ITEM 451 REINFORCED CONCRETE PAVEMENT, MISC.: CONCRETE HEADER WILL BE MEASURED BY THE SQUARE YARD OF FINISHED SURFACE COMPLETE IN PLACE. THE ACCEPTED QUANTITIES OF THIS ITEM WILL BE PAID FOR AT THE CONTRACT PRICES DESIGNATED. THE CONTRACT PRICE SHALL INCLUDE ALL LABOR, MATERIAL EQUIPMENT AND INCIDENTAL ITEMS NEEDED FOR EXCAVATION, BACKFILL, REINFORCING STEEL, EXPANSION JOINT MATERIAL, CONTRACTION JOINTS AND OTHER RELATED MISCELLANEOUS ITEMS WILL NOT BE PAID FOR SEPARATELY, BUT THE COST THEREOF SHALL BE INCLUDED IN THE COST OF THE ITEM OF WHICH THEY ARE A PART. PAYMENT FOR ACCEPTED QUANTITIES WILL BE MADE AT THE CONTRACT PRICE FOR: THIS ITEM 451 REINFORCED CONCRETE PAVEMENT, MISC.: CONCRETE HEADER (SQUARE YARD). THIS ITEM WILL BE PAID AS 100% COST TO CITY OF AKRON.

FENCE LENGTHS

THE LENGTHS OF FENCE SHOWN IN THE PLANS ARE HORIZONTAL DIMENSIONS. MEASUREMENTS OF THE FINAL QUANTITIES WILL BE IN ACCORDANCE WITH ITEM 607.

SEEDING AND MULCHING

THE FOLLOWING QUANTITIES ARE PROVIDED TO PROMOTE GROWTH AND CARE OF PERMANENT SEEDED AREAS:

659, SOIL ANALYSIS TEST	2	EACH
659, TOPSOIL	13186	CY
659, SEEDING AND MULCHING SEE SHEET 328		
659, REPAIR SEEDING AND MULCHING	5940	SY
659, INTER-SEEDING	5940	SY
659, COMMERCIAL FERTILIZER	16.57	TON
659, LIME	24.54	ACRES
659, WATER	658	M. GAL.
659, MOWING	267	M. SF

SEEDING AND MULCHING SHALL BE APPLIED TO ALL AREAS OF EXPOSED SOIL BETWEEN THE RIGHT-OF-WAY LINES, AND WITHIN THE CONSTRUCTION LIMITS FOR AREAS OUTSIDE THE RIGHT-OF-WAY LINES COVERED BY WORK AGREEMENT OR SLOPE EASEMENT. QUANTITY CALCULATIONS FOR SEEDING AND MULCHING ARE BASED ON THESE LIMITS.

ITEM 441 - VARIABLE DEPTH ASPHALT CONCRETE INTERMEDIATE COURSE, TYPE 1, (448)

THE FOLLOWING QUANTITY IS BEING CARRIED FORWARD TO THE GENERAL SUMMARY FOR USE IN LOCATIONS NOTED ON THE S. MAIN ST. TYPICAL SECTIONS, WHERE PAVEMENT IS BEING PLANNED AND THE PROPOSED CROSS-SLOPE IS NOT MATCHING EXISTING: 920 CU. YD.

ITEM 622 - CONCRETE BARRIER, SINGLE SLOPE, TYPE C, AS PER PLAN

CONCRETE BARRIER, SINGLE SLOPE, TYPE C, SHALL BE CONSTRUCTED AS PER STANDARD DRAWING RM-4.3 EXCEPT THAT A PAVED GUTTER SHALL BE CONSTRUCTED ON THE HIGH SIDE OF THE BARRIER, SEE DETAIL ON SHEET 22. ALL MATERIALS AND LABOR REQUIRED FOR THE COMPLETE INSTALLATION, INCLUDING THE 2" PEJF, SHALL BE INCLUDED IN THE UNIT PRICE BID PER FOOT OF ITEM 622 CONCRETE BARRIER, SINGLE SLOPE, TYPE C, AS PER PLAN.

ITEM 622 - CONCRETE BARRIER, END ANCHORAGE, REINFORCED, TYPE C, AS PER PLAN

THIS ITEM IS FOR THE END ANCHORAGES THAT WILL BE REQUIRED PER ODOT SCD RM-4.3 AND CALLED FOR IN THE CONTRACT DOCUMENTS. ALL REQUIREMENTS OF ITEM 622, CONCRETE BARRIER, SINGLE SLOPE, TYPE C, AS PER PLAN WILL BE REQUIREMENTS OF ITEM 622, CONCRETE BARRIER, END ANCHORAGE, TYPE C, AS PER PLAN. THE CONTRACT PRICE PER EACH FOR ITEM 622, CONCRETE BARRIER, END ANCHORAGE, TYPE C, AS PER PLAN SHALL INCLUDE ALL LABOR, MATERIAL, EQUIPMENT, AND INCIDENTAL ITEMS NECESSARY FOR THE COMPLETE IN PLACE CONSTRUCTION.

ITEM 622 - CONCRETE BARRIER, SINGLE SLOPE, TYPE D, AS PER PLAN A

CONCRETE BARRIER, SINGLE SLOPE, TYPE D, SHALL BE CONSTRUCTED AS PER STANDARD DRAWING RM-4.5 EXCEPT THAT A FOUNDATION SHALL BE ADDED TO THE BASE OF THE BARRIER, SEE DETAIL ON SHEET 843. ALL MATERIALS AND LABOR REQUIRED FOR THE COMPLETE INSTALLATION SHALL BE INCLUDED IN THE UNIT PRICE BID PER FOOT OF ITEM 622 CONCRETE BARRIER, SINGLE SLOPE, TYPE D, AS PER PLAN A.

ITEM 622 - CONCRETE BARRIER, SINGLE SLOPE, TYPE D, AS PER PLAN B

CONCRETE BARRIER, SINGLE SLOPE, TYPE D, SHALL BE CONSTRUCTED AS PER STANDARD DRAWING RM-4.5 EXCEPT THAT 4'X2" DRAINAGE SLOTS SHALL BE INCLUDED, SEE DETAIL ON SHEET 843. ALL MATERIALS AND LABOR REQUIRED FOR THE COMPLETE INSTALLATION SHALL BE INCLUDED IN THE UNIT PRICE BID PER FOOT OF ITEM 622 CONCRETE BARRIER, SINGLE SLOPE, TYPE D, AS PER PLAN B.

ITEM 622 - CONCRETE BARRIER, END ANCHORAGE, REINFORCED, TYPE D, AS PER PLAN

THIS ITEM IS FOR THE END ANCHORAGES THAT WILL BE REQUIRED PER ODOT SCD RM-4.5 AND CALLED FOR IN THE CONTRACT DOCUMENTS. ALL REQUIREMENTS OF ITEM 622, CONCRETE BARRIER, SINGLE SLOPE, TYPE D, AS PER PLAN B WILL BE REQUIREMENTS OF ITEM 622, CONCRETE BARRIER, END ANCHORAGE, TYPE D, AS PER PLAN. THE CONTRACT PRICE PER EACH FOR ITEM 622, CONCRETE BARRIER, END ANCHORAGE, TYPE D, AS PER PLAN SHALL INCLUDE ALL LABOR, MATERIAL, EQUIPMENT, AND INCIDENTAL ITEMS NECESSARY FOR THE COMPLETE IN PLACE CONSTRUCTION.

ITEM 622 - BARRIER TRANSITION, AS PER PLAN

CONTRACTOR SHALL PROVIDE SMOOTH TRANSITION OVER 14 FEET BETWEEN STANDARD SHAPES OF CONCRETE BARRIER, SINGLE SLOPE, TYPE D AND CONCRETE BARRIER, SINGLE SLOPE, TYPE C, AS PER PLAN. CONCRETE DITCH SHALL BE TERMINATED AND BACKSIDE BARRIER GRADING WILL BE PROVIDED WITH POSITIVE DRAINAGE. FOR TRANSITION DETAIL UNDER THE WOLF LEDGES AND GRANT STREET BRIDGES SEE DETAIL ON SHEET 973 & 974. ALL MATERIALS, EARTHWORK AND LABOR REQUIRED FOR THE COMPLETE INSTALLATION SHALL BE INCLUDED IN THE UNIT PRICE BID PER EACH OF ITEM 622 BARRIER TRANSITION, AS PER PLAN.

ITEM 622 - BARRIER TRANSITION, AS PER PLAN B

CONTRACTOR SHALL PROVIDE SMOOTH TRANSITION OVER THE LENGTH CALLED FOR IN PLAN BETWEEN STANDARD SHAPES OF CONCRETE BARRIER, SINGLE SLOPE, TYPE D ADJACENT THE FORWARD APPROACH SLAB OF BRIDGE NO. SUM-76-1041 L AND CONCRETE BARRIER, SINGLE SLOPE, TYPE B. SEE DETAIL ON SHEET 849. ALL MATERIALS AND LABOR REQUIRED FOR THE COMPLETE INSTALLATION SHALL BE INCLUDED IN THE UNIT PRICE BID PER EACH OF ITEM 622 BARRIER TRANSITION, AS PER PLAN B.

ITEM 622 - CONCRETE BARRIER, SINGLE SLOPE, TYPE D, AS PER PLAN C

CONCRETE BARRIER, SINGLE SLOPE, TYPE D, AS PER PLAN C, SHALL BE CONSTRUCTED AS PER STANDARD DRAWING RM-4.5 EXCEPT FOR THE MODIFICATIONS THAT CAN BE SEEN ON DETAIL SHEET 844. ALL MATERIALS AND LABOR REQUIRED FOR THE COMPLETE INSTALLATION SHALL BE INCLUDED IN THE UNIT PRICE BID PER FOOT OF ITEM 622 CONCRETE BARRIER, SINGLE SLOPE, TYPE D, AS PER PLAN C.

ITEM 622 - BARRIER TRANSITION, AS PER PLAN C

THIS ITEM IS A PERMANANT TAPERED END SECTION WITH STANDARD SHAPES OF CONCRETE BARRIER, SINGLE SLOPE, TYPE B AND CONCRETE BARRIER, SINGLE SLOPE, TYPE C, SEE DETAIL ON SHEET 848. ALL EXTRA PAVEMENT MATERIALS REQUIRED WITHIN THE DETAIL LIMITS SHALL BE INCIDENTAL TO THIS ITEM. ALL MATERIALS AND LABOR REQUIRED FOR THE COMPLETE INSTALLATION SHALL BE INCLUDED IN THE UNIT PRICE BID PER EACH OF ITEM 622 BARRIER TRANSITION, AS PER PLAN C.

ITEM 608 - CURB RAMP, AS PER PLAN A, B, C, D, E, F

THIS ITEM IS FOR USE OF CURB RAMPS THAT ARE TO BE CONSTRUCTED PER CITY OF AKRON STANDARDS AS IDENTIFIED IN THE PLANS. CURRENT CITY OF AKRON STANDARD DRAWINGS ARE PROVIDED IN THE MISCELLANEOUS DETAILS OF THE CONTRACT DOCUMENTS, SHEETS 846-847. ALL OTHER PROVISIONS OF SECTION 608 OF THE CMS SHALL APPLY. PAYMENT FOR ACCEPTED ADJACENT CURBING, TACTILE WARNING STRIPS, AND JOINTS SHALL BE INCLUDED IN THE CONTRACT PRICE PER SQUARE FOOT OF ITEM 608, CURB RAMP, AS PER PLAN, A, B, C, D, E, F. THE CONTRACT PRICE SHALL INCLUDE ALL LABOR, MATERIAL, EQUIPMENT, AND INCIDENTAL ITEMS NECESSARY FOR THE COMPLETE IN PLACE CONSTRUCTION OF ITEM 608, CURB RAMP, AS PER PLAN A, B, C, D, E, F.

ITEM 606 - ANCHOR ASSEMBLY, MGS TYPE E

THIS ITEM SHALL CONSIST OF FURNISHING AND INSTALLING ANY OF THE GUARDRAIL END TERMINALS FOR TYPE MGS GUARDRAIL AS LISTED ON ROADWAY ENGINEERING'S WEB PAGE UNDER ROADSIDE SAFETY DEVICES FOR APPROVED GUARDRAIL END TREATMENTS. INSTALLATION SHALL BE AT THE LOCATIONS SPECIFIED IN THE PLANS, IN ACCORDANCE WITH THE MANUFACTURER'S SPECIFICATIONS.

THE FACE OF THE TYPE E IMPACT HEAD SHALL BE COVERED WITH A SHEET OF TYPE G REFLECTIVE SHEETING, PER CMS 730.19.

I:\Projects\Main_Broadway\ROADWAY\Sheets\77269GN011.dgn 5/11/2016 10:50:51 AM Kyle_Koppes

KMK	5/10/16	SEEDING AND MULCHING QUANTITY REVISED
KMK	5/5/16	BARRIER DIMENSION REVISED- APP "A" REVISED
REV. BY	DATE	DESCRIPTION
DATE COMPLETED		

PLAN SHEET NO.	REFERENCE NO.	STATION		SIDE	PARTICIPATION 01/IMS/PV OR 04/IMS/OT/AKRN	601	606	606	606	606	608	608	608	608	608	609	609	622	622	622	622	622	622	622	FOR DEDUCT	INFO ONLY	
		CONCRETE SLOPE PROTECTION	GUARDRAIL, TYPE MGS			ANCHOR ASSEMBLY, TYPE E	ANCHOR ASSEMBLY, TYPE T	BRIDGE TERMINAL ASSEMBLY, TYPE 1	4" CONCRETE WALK	6" CONCRETE WALK	CURB RAMP, AS PER PLAN A	CURB RAMP, AS PER PLAN F	CURB RAMP, TYPE BI	WALKWAY, MISC.: 6" DECORATIVE CONCRETE WALK	CURB, TYPE 6	CURB, TYPE 7	CONCRETE BARRIER, SINGLE SLOPE, TYPE B	CONCRETE BARRIER, SINGLE SLOPE, TYPE D	CONCRETE BARRIER, SINGLE SLOPE, TYPE D, AS PER PLAN A	CONCRETE BARRIER, SINGLE SLOPE, TYPE D, AS PER PLAN B	BARRIER TRANSITION, AS PER PLAN C	CONCRETE BARRIER, END ANCHORAGE, REINFORCED, TYPE D	CONCRETE BARRIER, END ANCHORAGE, REINFORCED, TYPE D, AS PER PLAN	BARRIER INLET	CURB RAMP	20 FT EA	FT
		FROM	TO			SY	FT	EACH	EACH	EACH	SF	SF	SF	SF	SF	SF	FT	FT	FT	FT	FT	FT	EACH	EACH	EACH		
		S. MAIN ST.																									
497 - 502	C28	44+00.24	55+25.19	LT	01/IMS/PV																						
497	W19	39+95.52	43+72.21	RT	01/IMS/PV						2082.8		189.1		902.9		1083.0										
497	EC10B	40+77.02	42+87.43	RT	01/IMS/PV	260.5																					
497 - 500	W20	43+85.58	51+76.95	LT	01/IMS/PV						4701.6		108.5		1909.7												
500	W20A	52+00.69	52+47.36	LT	01/IMS/PV						225.9				47.1												
499 - 502	C29	44+63.56	55+09.72	RT	01/IMS/PV																					29.1	
499 - 502	W21	44+62.63	55+03.64	RT	01/IMS/PV						6141.6	212.8	101.1		2570.4												
500	W22	52+68.70	54+11.61	LT	01/IMS/PV										819.9												
500 & 502	W23	54+32.79	55+06.33	LT	01/IMS/PV						251.0	228.4			52.8												
502 - 503	C30	55+90.58	60+00.00	LT	01/IMS/PV																					23.4	
502 - 503	C31	55+73.96	60+00.00	RT	01/IMS/PV																					48.3	
502	C32	56+40.01	58+52.09	LT	01/IMS/PV																						
502	C32A	58+85.09	59+01.89	LT	01/IMS/PV																						
502 - 503	C32B	58+40.00	60+00.00	LT&RT	01/IMS/PV																					48.3	
502	W24	55+06.33	55+25.19	LT	01/IMS/PV						176.2	231.7															
502	W25	55+03.64	55+14.67	RT	01/IMS/PV						87.7	215.4															
502	W26	55+84.03	55+95.21	LT	01/IMS/PV						64.0	213.3															
502	W27	55+95.21	58+56.09	LT	01/IMS/PV						1434.7	212.8			594.2												
502	W28	55+73.96	55+93.59	RT	01/IMS/PV						198.2	231.1															
502	W28A	55+93.59	58+13.71	RT	01/IMS/PV						1156.1	333.5			1650.7												
502 - 503	W29	58+81.09	60+00.00	LT	01/IMS/PV						712.2				292.3												
502 - 503	W30	58+81.94	60+00.00	RT	01/IMS/PV						685.1				904.9												
		S. HIGH ST.																									
534	CB37	261+00.00	263+39.34	LT	01/IMS/PV													92.2	55.8			1	2				
534 - 535	C35	260+00.00	266+77.35	LT	01/IMS/PV																						
534	C66	262+32.29	262+50.76	LT	01/IMS/PV																						
534	W31	260+00.00	263+39.09	LT	01/IMS/PV						2075.4				861.2												
535	W32	263+65.03	266+77.35	LT	01/IMS/PV						1914.0				896.2												
		GARAGE DR.																									
544 & 546	CB37A	162+81.33	169+90.00	LT	01/IMS/PV														195.4	457.1	20.0		2	2	2		
543 - 546	C34	160+00.00	167+83.92	RT	01/IMS/PV																						
543	W33	160+00.00	161+16.55	RT	01/IMS/PV						699.3																
544 & 546	EC11	162+81.33	168+14.84	LT	01/IMS/PV	613.1																					
544 & 546	EC12	167+22.47	168+14.76	RT	01/IMS/PV	152.3																					
544	C67	163+19.40	166+83.27	RT	01/IMS/PV																						
546	C36	167+89.00	171+78.34	RT	01/IMS/PV																						
546	C37	169+90.00	171+70.00	LT	01/IMS/PV																						
		MAIN-BROADWAY CONN.																									
553 - 556	C38	367+76.01	376+33.60	RT	01/IMS/PV																						
553 - 556	C39	367+76.02	376+81.22	LT	01/IMS/PV																						
553	C39A	367+77.36	376+69.51	LT	01/IMS/PV																						
556	C39B	367+77.36	376+69.51	LT	01/IMS/PV																						
		E. SOUTH ST.																									
565	C40	10+68.54	13+32.89	RT	01/IMS/PV																					24.7	
565 - 566	C41	10+60.39	17+30.80	LT	01/IMS/PV																					42.0	
565	W34	10+86.47	13+32.89	RT	01/IMS/PV							1614.2			667.7												
565	GR9	12+58.71	13+35.61	RT	01/IMS/PV		12.5	1		1																	
566	GR10	14+60.34	17+33.30	LT	01/IMS/PV		262.5		1	1																	
SUBTOTAL						1025.9	275.0	1	1	2	4688.7	20351.2	1879.0	189.1	209.6	11708.1	8721.9	391.0	92.2	251.2	457.1	20.0	1	4	2		
SUBTOTAL (CARRIED TO SHEET 312)						1026	275.0	1	1	2	4689	20351	1879	189	210	11708	8722	391	92	251	457	20	1	4	2		

CALCULATED BLW CHECKED WJC	ROADWAY SUBSUMMARY	SUM - 76 - 10.00
307 1822		

I:\Projects\Main_Broadway\Roadway\Sheets\726965010.dgn 5/6/2016 3:41:23 PM kyle_koppes

SHEET NUMBER								PARTICIPATION	ITEM	GRAND TOTAL	UNIT	DESCRIPTION	SEE SHEET NO.
304	305	306	307	308	309	310	311	01/IMS/PV					
ROADWAY													
125.0	1662.5	150.0	275.0	137.5	12.5			2362.5	606	2362.5	FT	GUARDRAIL, TYPE MGS	
	200							200	606	200	FT	GUARDRAIL, TYPE MGS, 25' LONG-SPAN	
	2	2	1	2	1			8	606	8	EACH	ANCHOR ASSEMBLY, TYPE E	
	5		1	3				9	606	9	EACH	ANCHOR ASSEMBLY, TYPE T	
1	4	2	2	4	1			14	606	14	EACH	BRIDGE TERMINAL ASSEMBLY, TYPE 1	
1	3			1				5	606	5	EACH	BRIDGE TERMINAL ASSEMBLY, TYPE 2	
1								1	606	1	EACH	IMPACT ATTENUATOR, TYPE 3 UNIDIRECTIONAL	
	1							1	606	1	EACH	IMPACT ATTENUATOR, TYPE 3 UNIDIRECTIONAL, AS PER PLAN	
			4689		2198	1084	1110	9081	608	9081	SF	4" CONCRETE WALK	
		21297	20351	11735	11552	10275	1358	76568	608	76568	SF	6" CONCRETE WALK	
						7		7	608	7	FT	CONCRETE STEPS, TYPE A	
		1284	1879	1096	2708	391		7358	608	7358	SF	CURB RAMP, AS PER PLAN A	
				345				345	608	345	SF	CURB RAMP, AS PER PLAN B	
		552			367		196	1115	608	1115	SF	CURB RAMP, AS PER PLAN C	
		317				1317		1634	608	1634	SF	CURB RAMP, AS PER PLAN D	
		204		457				661	608	661	SF	CURB RAMP, AS PER PLAN E	
		88	189			138		415	608	415	SF	CURB RAMP, AS PER PLAN F	
		356	210					566	608	566	SF	CURB RAMP, TYPE BI	
		9220	11708	2010	7843	4585	447	35813	608	35813	SF	WALKWAY, MISC.: 6" DECORATIVE CONCRETE WALK	
						941		941	608	941	SF	WALKWAY, MISC.: 8" DECORATIVE CONCRETE WALK	
580			92					672	622	672	FT	CONCRETE BARRIER, SINGLE SLOPE, TYPE B	
3238								3238	622	3238	FT	CONCRETE BARRIER, SINGLE SLOPE, TYPE BI	
2402	287	686						3375	622	3375	FT	CONCRETE BARRIER, SINGLE SLOPE, TYPE C, AS PER PLAN	
2232	1170	93	251					3746	622	3746	FT	CONCRETE BARRIER, SINGLE SLOPE, TYPE D	
			457					457	622	457	FT	CONCRETE BARRIER, SINGLE SLOPE, TYPE D, AS PER PLAN A	
			20					20	622	20	FT	CONCRETE BARRIER, SINGLE SLOPE, TYPE D, AS PER PLAN B	
					12			12	622	12	FT	CONCRETE BARRIER, SINGLE SLOPE, TYPE D, AS PER PLAN C	
2								2	622	2	EACH	BARRIER TRANSITION	
10		2						12	622	12	EACH	BARRIER TRANSITION, AS PER PLAN A	
1								1	622	1	EACH	BARRIER TRANSITION, AS PER PLAN B	
			1					1	622	1	EACH	BARRIER TRANSITION, AS PER PLAN C	
1								1	622	1	EACH	CONCRETE BARRIER END SECTION, TYPE B	
2	2	1						5	622	5	EACH	CONCRETE BARRIER END SECTION, TYPE D	
8								8	622	8	EACH	CONCRETE BARRIER, END ANCHORAGE, REINFORCED, TYPE B	
65								65	622	65	EACH	CONCRETE BARRIER, END ANCHORAGE, REINFORCED, TYPE BI	
20	2	4						26	622	26	EACH	CONCRETE BARRIER, END ANCHORAGE, REINFORCED, TYPE C, AS PER PLAN	
32	11	5	4					52	622	52	EACH	CONCRETE BARRIER, END ANCHORAGE, REINFORCED, TYPE D	
			2					2	622	2	EACH	CONCRETE BARRIER, END ANCHORAGE, REINFORCED, TYPE D, AS PER PLAN	
EROSION CONTROL													
	1264							1264	601	1264	SY	CRUSHED AGGREGATE SLOPE PROTECTION	
886	1544	389	1026	24				3869	601	3869	SY	CONCRETE SLOPE PROTECTION	
PAVEMENT													
						971		971	609	971	FT	COMBINATION CURB AND GUTTER, TYPE 2	
						101		101	609	101	FT	COMBINATION CURB AND GUTTER, TYPE 2, AS PER PLAN	
	764	526		216	1093		140	2739	609	2739	FT	CURB, TYPE 2-A	
						238		238	609	238	FT	COMBINATION CURB AND GUTTER, TYPE 3, AS PER PLAN A	
						251		251	609	251	FT	COMBINATION CURB AND GUTTER, TYPE 3, AS PER PLAN B	
24	179	35						238	609	238	FT	CURB, TYPE 4-A	
77	69							146	609	146	FT	CURB, TYPE 4-C	
		8463	8722	1806	3348	1975	438	24752	609	24752	FT	CURB, TYPE 6	
			391		107			498	609	498	FT	CURB, TYPE 7	
NOTE: TOTALS CARRIED TO GENERAL SUMMARY													

KMK	5/6/16	BARRIER AND END ANCHORAGE QUANTITIES REVISED
KMK	5/2/16	QTY REVISED-FROM B TO BI END ANCHORAGE
KMS	4/7/16	QUANTITIES UPDATED PER CROSS SECTION REVISIONS
REV. BY	DATE	DESCRIPTION

CALCULATED BLW CHECKED WJC	ROADWAY SUBSUMMARY
SUM - 76 - 10.00	
312	1822

I:\P\???.ec??\Mo?? B??od?o?\R?od?o?\S?ee??\77269G5033.d?? 5/10/2016 3:01:06 PM ???e_????e?

PLAN SHEET NO.	REFERENCE NO.	STATION		SIDE	PARTICIPATION (01/IMS/PV)	202	202	202	202	202	202	202	202	202	202	202	202	202									
		STRUCTURE REMOVED	PAVEMENT REMOVED			PAVEMENT REMOVED, AS PER PLAN	WEARING COURSE REMOVED	WALK REMOVED	STEPS REMOVED	CONCRETE BARRIER REMOVED	TRAFFIC ISLAND REMOVED	CURB REMOVED	CURB AND GUTTER REMOVED	GUARDRAIL REMOVED	REMOVAL MISC.: WALL REMOVED	REMOVAL MISC.: UTILITY POLE FOUNDATION	REMOVAL MISC.: BILLBOARD REMOVED	LS	SY	SY	SY	SF	FT	FT	FT	FT	FT
		FROM	TO																								
EX. BACHTEL ST.																											
786	R504	19+44.11	20+82.64	LT	01/IMS/PV		774																				
786	R505	18+64.14	21+65.53	LT	01/IMS/PV				2099																		
786	R506	18+64.14	21+65.53	LT	01/IMS/PV									333													
786	R507	18+64.08	21+51.33	LT/RT	01/IMS/PV		815																				
786	R508	20+53.46	21+18.44	RT	01/IMS/PV		142																				
786	R509	18+64.08	21+34.04	RT	01/IMS/PV					1573																	
786	R510	18+64.09	20+63.92	RT	01/IMS/PV									279													
EX. YALE ST.																											
787	R511	10+03.01	13+09.99	LT	01/IMS/PV					1542																	
787	R512	10+04.67	13+21.57	LT/RT	01/IMS/PV		833																				
787	R513	10+04.67	13+10.25	LT	01/IMS/PV									306													
787	R514	10+01.09	13+11.04	RT	01/IMS/PV				2537																		
787	R515	10+01.09	20+90.10	RT	01/IMS/PV									309													
(THIS SHEET)							2564			7751				1227													
SUBTOTAL (CARRIED FROM SHEET 313)							34915	1452	11999	1452		2350		4608		2568											
SUBTOTAL (CARRIED FROM SHEET 314)							34750	2166	1857	6271		2160		3031		2870											
SUBTOTAL (CARRIED FROM SHEET 315)							24121			14145		1060		3098		1413											
SUBTOTAL (CARRIED FROM SHEET 316)						LS	12222			5780	3		44	2925		153											
SUBTOTAL (CARRIED FROM SHEET 317)							7597			19068	3			2795				6	LS								
SUBTOTAL (CARRIED FROM SHEET 318)							5561	4181		27269				3937			87	6									
SUBTOTAL (CARRIED FROM SHEET 319)							4207	1321		14875				3362			21										
SUBTOTAL (CARRIED FROM SHEET 320)							8127			13068				2253	1699	61	141										
SUBTOTAL (CARRIED FROM SHEET 321)							10771			15397				2351		55											
SUBTOTAL (CARRIED FROM SHEET 322)							7167			13194				2620													
SUBTOTAL (CARRIED FROM SHEET 323)							5253			16735				2161		58											
SUBTOTAL (CARRIED FROM SHEET 324)							4379	1549		7488	7		9	2765													
TOTALS CARRIED TO GENERAL SUMMARY						LS	161634	10669	13856	162493	13	5570	53	37133	1699	7120	307	12	LS								

KMK	5/10/16	REFERENCE 324, BARRIER REMOVED MOVED TO WALL REMOVED
KMK	5/10/16	REFERENCE R310, BARRIER REMOVED, DELETED FROM PLANS
KMK	4/21/16	ADDED BILLBOARD REMOVAL
JEM	4/7/16	BP GAS STATION PARCEL/ACCESS REVISION
REV. BY	DATE	DESCRIPTION

CALCULATED BLW CHECKED KMK
ROADWAY REMOVAL SUBSUMMARY
SUM - 76 - 10.00
 325
 1822

I:\P\??ac??\Mo??_B??od?o?\S?ee??\77269G5018.d?? 5/10/2016 3:03:26 PM ???e_????e?

PLAN SHEET NO.	STATION		PARTICIPATION (100% CITY OR PROJECT)	203	203	203	204	204	659	861
	FROM	TO		EXCAVATION	EXCAVATION, AS PER PLAN	EMBANKMENT	EXCAVATION OF SUBGRADE	GRANULAR MATERIAL, TYPE B	SEEDING AND MULCHING	GEOGRID FOR SUBGRADE STABILIZATION
				CY	CY	CY	CY	CY	SY	SY
WOLF LEDGES PARKWAY										
593	20+00.00	21+00.00	01/IMS/PV	377	0	503	0	0	606	0
594	21+50.00	21+96.70	01/IMS/PV	0	0	329	0	0	233	0
595	25+17.74	26+00.00	01/IMS/PV	326	0	65	0	0	291	0
596	26+50.00	27+95.14	01/IMS/PV	529	0	0	0	0	277	0
RUSSELL AVENUE										
599	10+00.00	10+38.81	01/IMS/PV	25	0	0	20	20	23	61
600	10+50.00	11+50.00	01/IMS/PV	472	0	0	273	273	345	816
601	12+00.00	12+50.00	01/IMS/PV	452	0	0	182	182	242	544
602	13+00.00	13+50.00	01/IMS/PV	216	0	0	93	93	111	278
COBURN STREET										
603	213+35.12	214+32.21	01/IMS/PV	472	0	2	246	246	256	738
EAST THORNTON STREET										
609	110+00.00	111+00.00	01/IMS/PV	89	0	0	0	0	90	0
610	111+50.00	112+50.00	01/IMS/PV	499	0	0	0	0	171	0
611	113+00.00	113+59.14	01/IMS/PV	277	0	3	0	0	116	0
612	115+03.57	116+50.00	01/IMS/PV	405	0	3	0	0	263	0
613	117+00.00	118+00.00	01/IMS/PV	575	0	12	0	0	392	0
614	118+50.00	120+50.00	01/IMS/PV	308	0	1016	0	0	603	0
615	120+84.02	121+00.00	01/IMS/PV	16	0	262	0	0	99	0
SOUTH BROADWAY STREET										
622	56+50.00	57+50.00	01/IMS/PV	199	0	138	0	0	357	0
623	57+70.00	58+50.00	01/IMS/PV	55	0	114	0	0	464	0
624	59+00.00	60+00.00	01/IMS/PV	22	0	123	0	0	519	0
625	60+50.00	61+50.00	01/IMS/PV	27	0	102	0	0	508	0
626	62+00.00	63+00.00	01/IMS/PV	26	0	94	0	0	617	0
627	63+50.00	64+50.00	01/IMS/PV	23	0	65	0	0	330	0
628	65+00.00		01/IMS/PV	15	0	26	0	0	100	0
629	165+50.00	166+50.00	01/IMS/PV	32	0	49	0	0	230	0
630	167+00.00	168+00.00	01/IMS/PV	147	0	54	0	0	1164	0
631	168+50.00	169+50.00	01/IMS/PV	61	0	173	0	0	1308	0
632	170+00.00	171+00.00	01/IMS/PV	22	0	79	0	0	402	0
633	171+50.00	172+50.00	01/IMS/PV	18	0	43	0	0	244	0
634	172+99.68		01/IMS/PV	0	0	0	0	0	0	0
SUBTOTAL E (CARRIED TO SHEET 328)				5685	0	3255	814	814	10361	2437

PLAN SHEET NO.	STATION		PARTICIPATION (100% CITY OR PROJECT)	203	203	203	204	204	659	861
	FROM	TO		EXCAVATION	EXCAVATION, AS PER PLAN	EMBANKMENT	EXCAVATION OF SUBGRADE	GRANULAR MATERIAL, TYPE B	SEEDING AND MULCHING	GEOGRID FOR SUBGRADE STABILIZATION
				CY	CY	CY	CY	CY	SY	SY
WEST SOUTH STREET										
638	8+29.17	9+50.00	01/IMS/PV	240	0	130	0	0	687	0
639	10+00.00	11+00.00	01/IMS/PV	89	0	806	0	0	786	0
640	11+50.00	13+00.00	01/IMS/PV	51	0	553	0	0	894	0
641	13+50.00	15+00.00	01/IMS/PV	341	0	41	0	0	602	0
642	15+50.00	17+00.00	01/IMS/PV	322	0	428	0	0	987	0
OLD MAIN STREET										
644	31+00.00	32+00.00	01/IMS/PV	210	0	100	0	0	539	0
645	32+50.00	33+50.00	01/IMS/PV	103	0	76	0	0	398	0
ROUNDBOUT										
648	10+00.00	11+00.00	01/IMS/PV	0	0	1369	0	0	1014	0
649	11+50.00	12+63.89	01/IMS/PV	0	0	1008	0	0	662	0
BACHTEL AVENUE										
651	28+64.11	30+00.00	01/IMS/PV	188	0	158	0	0	455	0
YALE STREET										
653	20+05.00	20+50.00	01/IMS/PV	164	0	3	0	0	83	0
654	21+00.00	22+00.00	01/IMS/PV	103	0	68	0	0	216	0
EAST MILLER STREET										
656	117+50.00	118+50.00	01/IMS/PV	90	0	28	0	0	214	0
657	119+00.00	119+03.00	01/IMS/PV	26	0	0	0	0	40	0
658	120+17.55		01/IMS/PV	0	0	0	0	0	0	0
INFIELD GRADING										
793	CADD AREA (EW-1)		01/IMS/PV	797	0	2034	0	0	2901	0
794	CADD AREA (EW-2)		01/IMS/PV	5169	0	225	0	0	3411	0
794	CADD AREA (EW-3)		01/IMS/PV	5537	0	394	0	0	3652	0
SUBTOTAL F (THIS COLUMN)				13430	0	7421	0	0	17541	0
SUBTOTAL (CARRIED FROM COLUMN A, SHEET 326)				60188	3881	108150	8852	8970	32246	25047
SUBTOTAL (CARRIED FROM COLUMN B, SHEET 326)				21363	0	61432	0	0	24667	0
SUBTOTAL (CARRIED FROM COLUMN C, SHEET 327)				35813	0	6578	0	0	22696	0
SUBTOTAL (CARRIED FROM COLUMN D, SHEET 327)				30118	0	13426	0	0	10832	0
SUBTOTAL (CARRIED FROM COLUMN E)				5685	0	3255	814	814	10361	2437
EMBANKMENT DEDUCTION DUE TO TOPSOIL						-22034				
TOTALS CARRIED TO GENERAL SUMMARY				166597	3881	178228	9666	9784	118343	27484

KMK	5/10/16	SEEDING AND MULCHING QUANTITY REVISED
KMS	4/7/16	TOTALS UPDATED FROM CHANGES ON SHEET 326
REV. BY	DATE	DESCRIPTION
DATE COMPLETED		

CALCULATED
MJT
CHECKED
KMK

EARTHWORK SUBSUMMARY

SUM - 76 - 10.00

328
1822

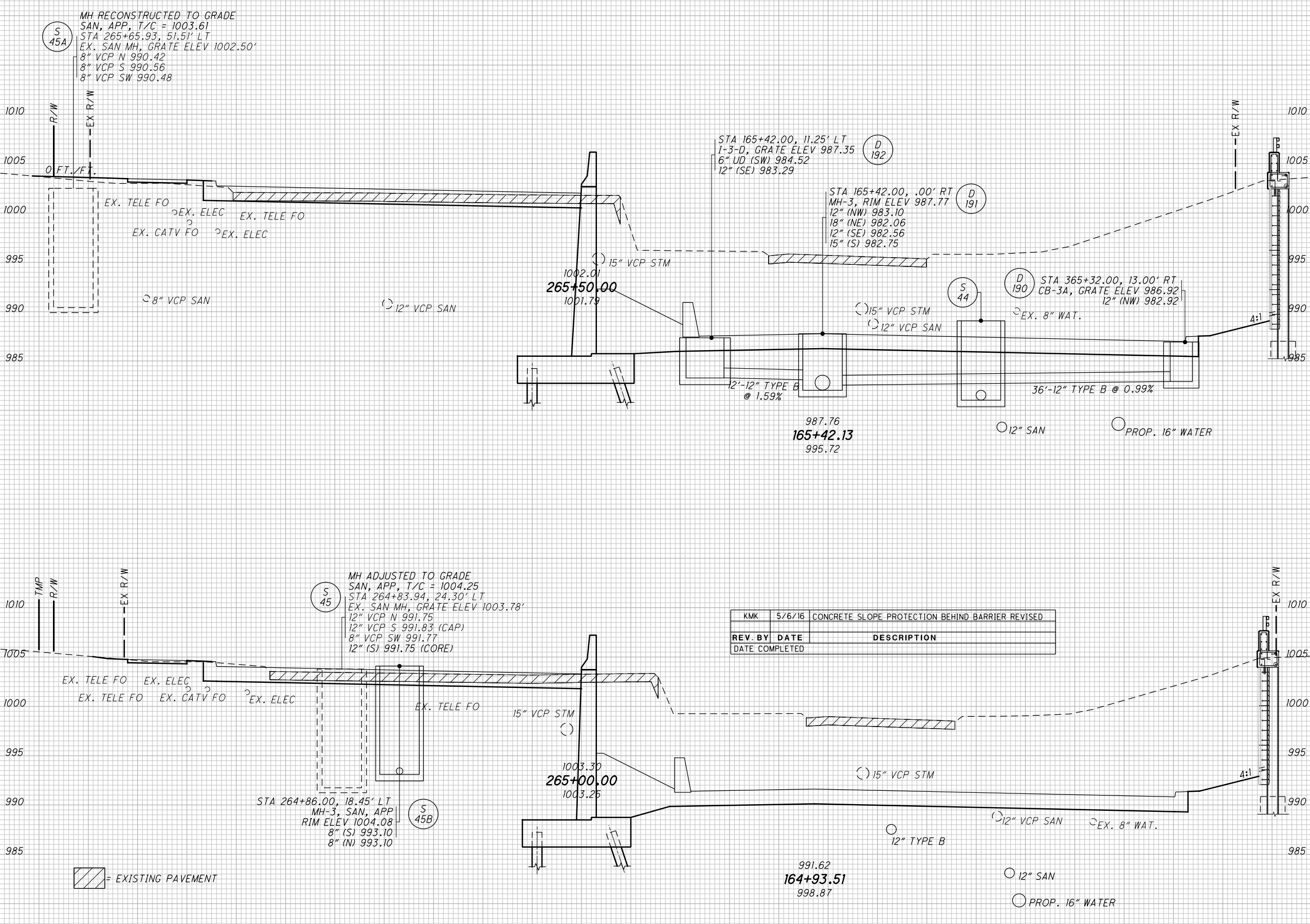
SEEDING	END	
	WIDTH	SO. YDS.
	142	
	21	
	97	
	14	
	239	

END AREA		VOLUME		CALCULATED	MUT	CHECKED	KMK
CUT	FILL	CUT	FILL				
		1815	9				
		967	4				
		1719	4				
		890	0				
		3534	13				

CROSS SECTIONS - S. HIGH ST.
STA. 265+00.00 TO STA. 265+50.00

SUM -76 -10.00

540
 1822



MH RECONSTRUCTED TO GRADE
 SAN, APP, T/C = 1003.61
 STA 265+65.93, 51.51' LT
 EX. SAN MH, GRATE ELEV 1002.50'
 8" VCP N 990.42
 8" VCP S 990.56
 8" VCP SW 990.48

STA 165+42.00, 11.25' LT
 1-3-D, GRATE ELEV 987.35
 6" UD (SW) 984.52
 12" (SE) 983.29

STA 165+42.00, .00' RT
 MH-3, RIM ELEV 987.77
 12" (NW) 983.10
 18" (NE) 982.06
 12" (SE) 982.56
 15" (S) 982.75

STA 365+32.00, 13.00' RT
 CB-3A, GRATE ELEV 986.92
 12" (NW) 982.92

MH ADJUSTED TO GRADE
 SAN, APP, T/C = 1004.25
 STA 264+83.94, 24.30' LT
 EX. SAN MH, GRATE ELEV 1003.78'
 12" VCP N 991.75
 12" VCP S 991.83 (CAP)
 8" VCP SW 991.77
 12" (S) 991.75 (CORE)

STA 264+86.00, 18.45' LT
 MH-3, SAN, APP
 RIM ELEV 1004.08
 8" (S) 993.10
 8" (N) 993.10

KMK	5/6/16	CONCRETE SLOPE PROTECTION BEHIND BARRIER REVISED
REV. BY	DATE	DESCRIPTION
DATE COMPLETED		

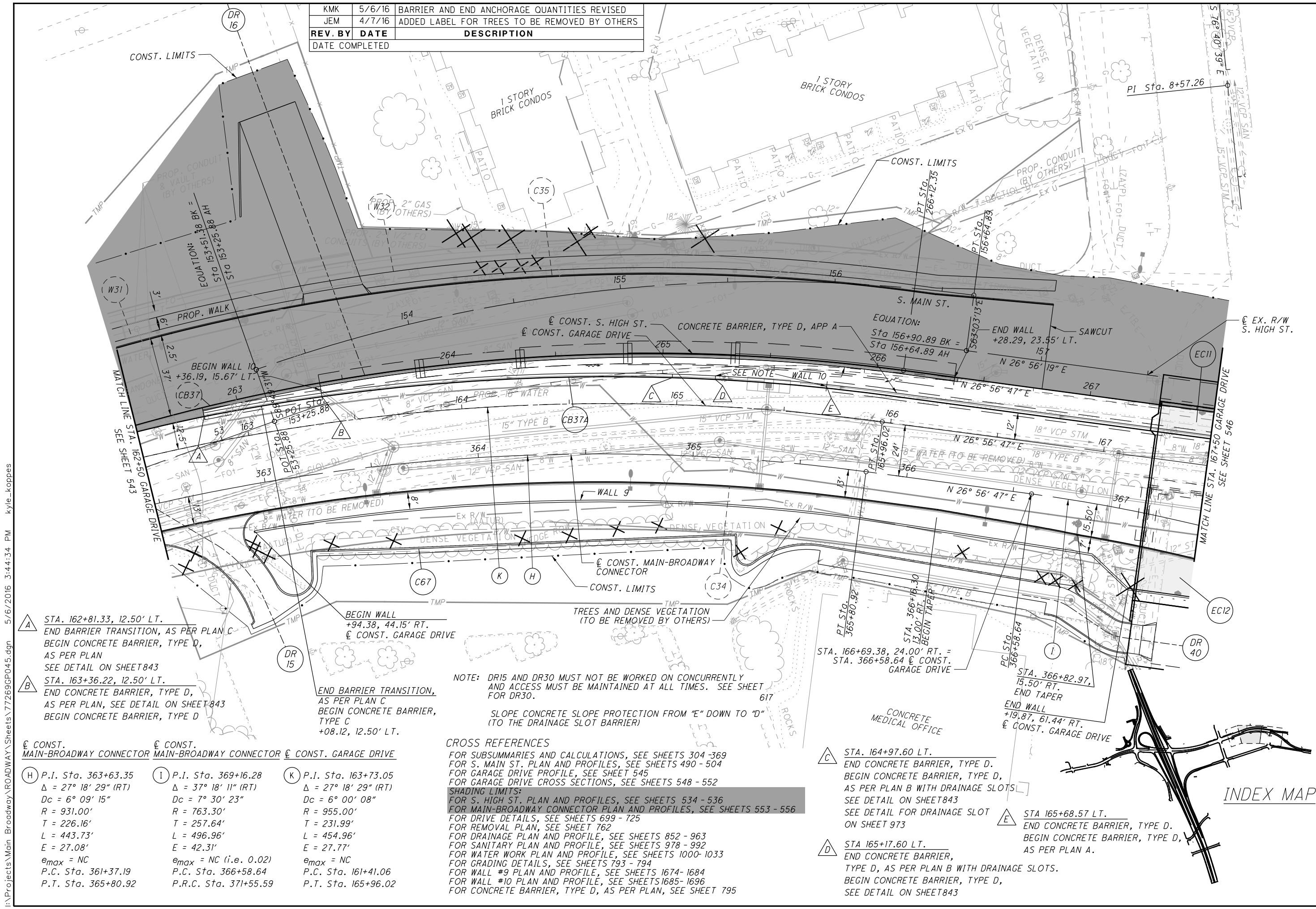
= EXISTING PAVEMENT

KMK	5/6/16	BARRIER AND END ANCHORAGE QUANTITIES REVISED
JEM	4/7/16	ADDED LABEL FOR TREES TO BE REMOVED BY OTHERS
REV. BY	DATE	DESCRIPTION
DATE COMPLETED		



**PLAN - GARAGE DRIVE
STA. 162+50 TO STA. 167+50**

SUM-76-10.00



- A** STA. 162+81.33, 12.50' LT.
END BARRIER TRANSITION, AS PER PLAN C
BEGIN CONCRETE BARRIER, TYPE D,
AS PER PLAN
SEE DETAIL ON SHEET 843
- B** STA. 163+36.22, 12.50' LT.
END CONCRETE BARRIER, TYPE D,
AS PER PLAN, SEE DETAIL ON SHEET 843
BEGIN CONCRETE BARRIER, TYPE D
- H** P.I. Sta. 363+63.35
Δ = 27° 18' 29" (RT)
Dc = 6° 09' 15"
R = 931.00'
T = 226.16'
L = 443.73'
E = 27.08'
e_{max} = NC
P.C. Sta. 361+37.19
P.T. Sta. 365+80.92
- I** P.I. Sta. 369+16.28
Δ = 37° 18' 11" (RT)
Dc = 7° 30' 23"
R = 763.30'
T = 257.64'
L = 496.96'
E = 42.31'
e_{max} = NC (i.e. 0.02)
P.C. Sta. 366+58.64
P.R.C. Sta. 371+55.59
- K** P.I. Sta. 163+73.05
Δ = 27° 18' 29" (RT)
Dc = 6° 00' 08"
R = 955.00'
T = 231.99'
L = 454.96'
E = 27.77'
e_{max} = NC
P.C. Sta. 161+41.06
P.T. Sta. 165+96.02

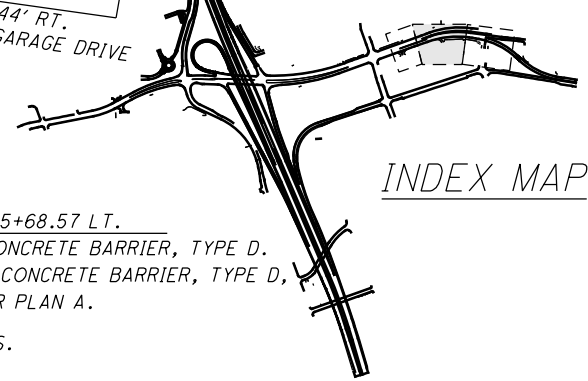
NOTE: DR15 AND DR30 MUST NOT BE WORKED ON CONCURRENTLY AND ACCESS MUST BE MAINTAINED AT ALL TIMES. SEE SHEET FOR DR30.

SLOPE CONCRETE SLOPE PROTECTION FROM "E" DOWN TO "D" (TO THE DRAINAGE SLOT BARRIER)

CROSS REFERENCES
FOR SUBSUMMARIES AND CALCULATIONS, SEE SHEETS 304-369
FOR S. MAIN ST. PLAN AND PROFILES, SEE SHEETS 490-504
FOR GARAGE DRIVE PROFILE, SEE SHEET 545
FOR GARAGE DRIVE CROSS SECTIONS, SEE SHEETS 548-552

SHADING LIMITS:
FOR S. HIGH ST. PLAN AND PROFILES, SEE SHEETS 534-536
FOR MAIN-BROADWAY CONNECTOR PLAN AND PROFILES, SEE SHEETS 553-556
FOR DRIVE DETAILS, SEE SHEETS 699-725
FOR REMOVAL PLAN, SEE SHEET 762
FOR DRAINAGE PLAN AND PROFILE, SEE SHEETS 852-963
FOR SANITARY PLAN AND PROFILE, SEE SHEETS 978-992
FOR WATER WORK PLAN AND PROFILE, SEE SHEETS 1000-1033
FOR GRADING DETAILS, SEE SHEETS 793-794
FOR WALL #9 PLAN AND PROFILE, SEE SHEETS 1674-1684
FOR WALL #10 PLAN AND PROFILE, SEE SHEETS 1685-1696
FOR CONCRETE BARRIER, TYPE D, AS PER PLAN, SEE SHEET 795

- C** STA. 164+97.60 LT.
END CONCRETE BARRIER, TYPE D.
BEGIN CONCRETE BARRIER, TYPE D,
AS PER PLAN B WITH DRAINAGE SLOTS
SEE DETAIL ON SHEET 843
SEE DETAIL FOR DRAINAGE SLOT
ON SHEET 973
- D** STA 165+17.60 LT.
END CONCRETE BARRIER,
TYPE D, AS PER PLAN B WITH DRAINAGE SLOTS.
BEGIN CONCRETE BARRIER, TYPE D,
SEE DETAIL ON SHEET 843
- E** STA 165+68.57 LT.
END CONCRETE BARRIER, TYPE D.
BEGIN CONCRETE BARRIER, TYPE D,
AS PER PLAN A.



I:\Projects\Main_Broadway\ROADWAY\Sheets\772699\045.dgn 5/6/2016 3:44:34 PM kyle_koppes

FOR LEGEND SEE SHEET 726
 FOR SUBSUMMARY SEE SHEETS 313 - 324
 FOR DRAINAGE REMOVALS SEE SHEETS 852 - 969
 FOR SIGN REMOVALS SEE SHEETS 1044 - 1064
 FOR LIGHTING REMOVALS SEE SHEETS 1192 - 1210

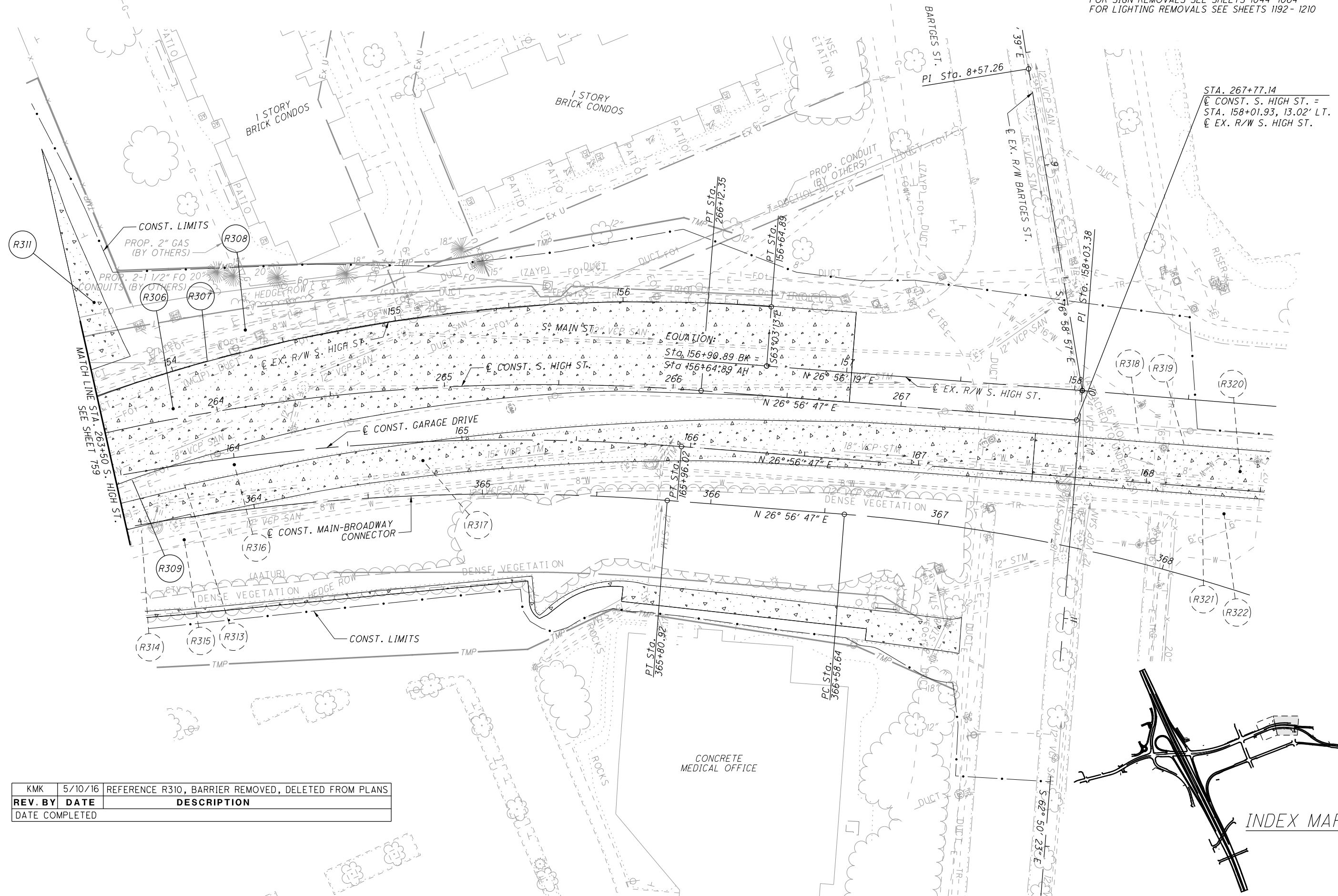


CALCULATED	MJT	CHECKED	KMK
------------	-----	---------	-----

**REMOVAL PLAN - S. HIGH ST.
 STA. 263+50 TO STA. 267+77**

SUM-76-10.00

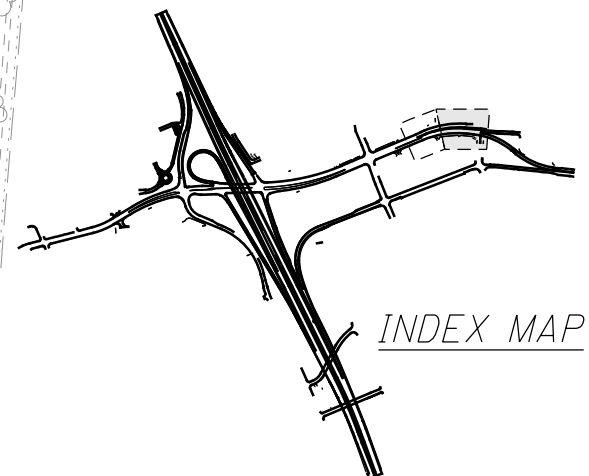
760
1822



EQUATION:
 Sta. 156+90.89 BK =
 Sta. 156+64.89 AH

STA. 267+77.14
 C CONST. S. HIGH ST. =
 STA. 158+01.93, 13.02' LT.
 C EX. R/W S. HIGH ST.

REV. BY	DATE	DESCRIPTION
KMK	5/10/16	REFERENCE R310, BARRIER REMOVED, DELETED FROM PLANS



INDEX MAP

I:\P\???\ec??\Mo??_B??od??\R??ad??\S??ee??\77269GM14.3.d?? 5/10/2016 3:05:06 PM ???e_????e?

I:\P\???\ec??\Mo?? B??od?o?\STRUCTURES\Wd??_01\5?ee??\77269WIEQ001.d?? 5/9/2016 4:17:05 PM ???e_???e?

KMK	5/9/16	WALL #9 REBAR QUANTITY ADDED & WALL #10 PILING QUANTITY REVISED
KMK	3/28/16	ITEM 203 - GRANULAR MATERIAL, TYPE C - REMOVED
REV. BY	DATE	DESCRIPTION
DATE COMPLETED		

QUANTITIES CALC. BY	DRC
CHECKED BY	RWB

ITEM ODOT	EXT.	PARTICIPATION 02/IMS/BR	TOTAL	UNIT	DESCRIPTION	MSE WALL 1	WALL 2	MSE WALL 3	MSE WALL 4	MSE WALL 5	MSE WALL 6	MSE WALL 7	MSE WALL 8	WALL 9	WALL 10	MSE WALL 11	MODULAR BLOCK WALL	REF. SHEET
202	11201	LS	LS		PORTIONS OF STRUCTURE REMOVED, AS PER PLAN		LS								LS			(1626/1822) & (1688/1822)
203	20001	7,844	7,844	CY	EMBANKMENT, AS PER PLAN			1216	1248	191	2141	2446	602					(1618/1822)
203	35110	8,598	8,598	CY	GRANULAR MATERIAL, TYPE B			1414	1451	280	1794	2882	777					
503	11101	LS	LS		COFFERDAMS AND EXCAVATION BRACING, AS PER PLAN										LS			(1616/1822) & (1688/1822)
503	21100	2,290	2,290	CY	UNCLASSIFIED EXCAVATION										2290			
503	21101	460	460	CY	UNCLASSIFIED EXCAVATION, AS PER PLAN									460				(1676/1822)
505	11100	LS	LS		PILE DRIVING EQUIPMENT MOBILIZATION										LS			
507	00100	3,460	3,460	FT	STEEL PILES HP10X42, FURNISHED										3460			
507	00150	3,045	3,045	FT	STEEL PILES HP10X42, DRIVEN										3045			
507	00400	1,510	1,510	FT	STEEL PILES, MISC.: SOLDIER PILES									1510				
507	93300	83	83	EACH	STEEL POINTS OR SHOES										83			(1676/1822)
509	10000	326,154	326,154	LB	EPOXY COATED REINFORCING STEEL	56158	14299			53725	8783	82374		51058	59757			
510	10000	130	130	EACH	DOWEL HOLES WITH NONSHRINK, NONMETALLIC GROUT		130											
511	46212	2,121	2,121	CY	CLASS OCI CONCRETE WITH OC/OA	522	145			429	57	638			330			
511	46213	363	363	CY	CLASS OCI CONCRETE WITH OC/OA, AS PER PLAN									363				(1676/1822)
511	46512	334	334	CY	CLASS OCI CONCRETE WITH OC/OA, FOOTING										334			
512	10050	296	296	SY	SEALING OF CONCRETE SURFACES (NON-EPOXY)					296								
512	10101	11,681	11,681	SY	SEALING OF CONCRETE SURFACES (EPOXY-URETHANE), AS PER PLAN	1008	157	417	478	1230	1388	4567	450	1251	543	192		(1616/1822)
512	33000	124	124	SY	TYPE 2 WATERPROOFING									74	50			
516	13600	216	216	SF	1" PREFORMED EXPANSION JOINT FILLER									76	140			
516	13900	4,723	4,723	SF	2" PREFORMED EXPANSION JOINT FILLER	1013	45	79	96	1325	168	1894	103					