

INDEX OF SHEETS:

TITLE SHEET	1	PLAN AND PROFILE - MIAMI ST.	581	WATER WORK PLANS	993-1036
INDEX OF SHEETS AND DESIGN DESIGNATION	2-3	PLAN AND PROFILE - GRANT ST.	582-584	TRAFFIC CONTROL PLANS	
SCHEMATIC PLAN	4-8	CROSS SECTIONS - GRANT ST.	585-589	GENERAL NOTES	1037-1041
CURVE DATA AND PROJECT CONTROL	9-10	PLAN AND PROFILE - WOLF LEDGES PKWY.	590-592	GENERAL SUMMARY	1042-1043
TYPICAL SECTIONS	11-41	CROSS SECTIONS - WOLF LEDGES PKWY.	593-596	EXISTING SIGNING PLANS	1044-1064
GENERAL NOTES	42-63	PLAN AND PROFILE - RUSSELL AVE./COBURN ST.	597-598	EXISTING SIGNING SUBSUMMARY	1065-1074
MAINTENANCE OF TRAFFIC		CROSS SECTIONS - RUSSELL AVE.	599-602	PAVEMENT MARKING PLANS	1075-1087
GENERAL NOTES	64-71	CROSS SECTIONS - COBURN ST.	603	PAVEMENT MARKING SUBSUMMARY	1088-1096
PLAN INSERT SHEET _209960	72	PLAN AND PROFILE - E. THORNTON ST.	604-608	SIGNING PLANS	1097-1136*
SUBSUMMARIES	73-87	CROSS SECTIONS - E. THORNTON ST.	609-615	SIGNAL GENERAL SUMMARY	1137-1138
RAMP CLOSURES/DETOURS	88-100,100A,101-102	PLAN AND PROFILE - S. BROADWAY ST.	616-621	SIGNAL PLANS	1139-1181
PHASE 1	113-217	CROSS SECTIONS - S. BROADWAY ST.	622-634	LIGHTING PLANS	1182-1224
PHASE 2	218-238,238A	PLAN AND PROFILE - W. SOUTH ST.	635-637	LANDSCAPING PLANS	1225-1237
PHASE 3	239-270	CROSS SECTIONS - W. SOUTH ST.	638-642	STRUCTURES OVER 20'	
PHASE 4	271-291	PLAN AND PROFILE - OLD MAIN ST.	643	BRIDGE NO. SUM-76-1034 L/R	1238-1299
TEMPORARY SIGNAL DETAILS	292-295	CROSS SECTIONS - OLD MAIN ST.	644-645	BRIDGE NO. SUM-76-1041 L/R	1300-1361
GENERAL SUMMARY	296-303	PLAN AND PROFILE - ROUNDABOUT	646-647	BRIDGE NO. SUM-76-1043	1362-1389
SUBSUMMARIES AND CALCULATIONS	304-369	CROSS SECTIONS - ROUNDABOUT	648-649	BRIDGE NO. SUM-76-1044	1390-1421
PROJECT SITE PLAN	370-373	PROFILE - BACHTEL AVE.	650	BRIDGE NO. SUM-76-1051	1422-1464
CULVERT FILE NUMBERS	374	CROSS SECTIONS - BACHTEL AVE.	651	BRIDGE NO. SUM-76-1075	1465-1504
PLAN AND PROFILE - I.R. 76	375-383	PLAN AND PROFILE - YALE ST.	652	BRIDGE NO. SUM-76-1085	1505-1541
CROSS SECTIONS - I.R. 76	384-415	CROSS SECTIONS - YALE ST.	653-654	BRIDGE NO. SUM-SOUTH-0036	1542-1583
PLAN AND PROFILE - RAMP W-5	416-421	PLAN AND PROFILE - E. MILLER AVE.	655	BRIDGE NO. SUM-BARGE-0116	1584-1611
CROSS SECTIONS - RAMP W-5	422-431	CROSS SECTIONS - E. MILLER AVE.	656-658	WALLS	
PLAN AND PROFILE - RAMP W-5A	432-434	PLAN AND PROFILE - E. BARTGES ST.	659	WALL SCHEMATIC AND GENERAL NOTES	1612-1618
CROSS SECTIONS - RAMP W-5A	435-438	CROSS SECTION LAYOUT	660	WALL ESTIMATED QUANTITIES	1619-1620
PLAN AND PROFILE - RAMP W-6	439-444	SUPERELEVATION TABLES	661-667	WALL 1	1621-1625
CROSS SECTIONS - RAMP W-6	445-456	INTERCHANGE DETAILS	668-669	WALL 2	1626-1628
PLAN AND PROFILE - RAMP W-7	457-459	TERMINAL DETAILS	670-682	WALL 3	1629-1633
CROSS SECTIONS - RAMP W-7	460-466	INTERSECTION DETAILS	683-698	WALL 4	1634-1638
PLAN AND PROFILE - RAMP W-8	467-471	DRIVE DETAILS	699-725	WALL 5	1639-1646
CROSS SECTIONS - RAMP W-8	472-477	MISCELLANEOUS DETAILS		WALL 6	1647-1654
PLAN AND PROFILE - RAMP W-9	478-482	REMOVAL PLANS	726-733,733A,734-787	WALL 7	1655-1669
CROSS SECTIONS - RAMP W-9	483-489	EXISTING S. MAIN ST. PLANS	788-792	WALL 8	1670-1673
PLAN AND PROFILE - S. MAIN ST.	490-504	GRADING DETAILS	793-794	WALL 9	1674-1684
CROSS SECTIONS - S. MAIN ST.	505-533	PAVEMENT JOINT DETAILS	795-804	WALL 10	1685-1696
PLAN AND PROFILE - S. HIGH ST.	534-536	NOISE BARRIERS	805-839	WALL 11	1697-1698
CROSS SECTIONS - S. HIGH ST.	537-542	ROUNDABOUT AND SPLITTER ISLAND DETAILS	840-842	FENCE PLAN	1699-1720
PLAN AND PROFILE - GARAGE DRIVE	543-547	ROADWAY MISCELLANEOUS AS PER PLAN	843-851	RIGHT OF WAY PLANS	1721-1822
CROSS SECTIONS - GARAGE DRIVE	548-552	DRAINAGE PLAN AND PROFILES	852-955	SOIL PROFILE SHEETS	
PLAN AND PROFILE - MAIN-BROADWAY CONNECTOR	553-556	STORM AND SANITARY SEWER PROFILES	956-968		
CROSS SECTIONS - MAIN-BROADWAY CONNECTOR	557-564	CULVERT DETAILS	969		
PLAN AND PROFILE - E. SOUTH ST.	565-570	DRAINAGE AND SANITARY DETAILS	970-977		
CROSS SECTIONS - E. SOUTH ST.	571-580	SANITARY SEWER PLAN AND PROFILES	978-992		

\* SHEET 1128 NOT USED

INDEX OF SHEETS

SUM - 76 - 10.00

KMK	4/29/16	REMOVAL OF SHEET 1128
REV. BY	DATE	DESCRIPTION
DATE COMPLETED		

I:\Projects\Main\_Broadway\ROADWAY\Sheets\77269GT002.dgn 5/2/2016 4:47:24 PM kyle.koppes

**SANITARY SEWERS**

ALL SEWER WORK ITEMS AND CONSTRUCTION SHALL CONFORM TO ODOT ITEM 611 AND THE CITY OF AKRON (COA) CONSTRUCTION AND MATERIAL SPECIFICATIONS (CMS), ITEMS CONTAINED WITHIN CITY OF AKRON SECTION 550, PIPE CULVERTS, SEWERS AND DRAINS (AND ALL APPLICABLE SUB-SECTIONS). WHERE THERE IS CONTRADICTION, THE COA SPEC. WILL TAKE PRECEDENCE. THE CONTRACTOR SHALL HAVE A COPY OF THE CURRENT EDITION OF THE CITY OF AKRON CONSTRUCTION AND MATERIAL SPECIFICATIONS (CMS) ON SITE FOR REFERENCE AT ALL TIMES DURING CONSTRUCTION. IF THE CONTRACTOR DOES NOT HAVE A COPY OF THE CURRENT EDITION OF THE CITY OF AKRON CONSTRUCTION AND MATERIAL SPECIFICATIONS (CMS), THE CONTRACTOR SHALL PURCHASE A COPY OF THE CITY OF AKRON CMS. THE PURCHASE OF THE CITY OF AKRON CMS SHALL BE CONSIDERED INCIDENTAL AND BE INCLUDED IN THE CONTRACT PRICE FOR ODOT ITEM 611 - CONDUIT, MISC.: " " INCH SANITARY SEWER, 707.20, CLASS "NR" BEDDING (L.F.). SECTIONS OF THE COA SPEC. HAVE BEEN INCLUDED IN THE GENERAL NOTES WITH THE FOLLOWING MODIFICATIONS:

1. BASIS OF PAYMENT FOR CITY OF AKRON ITEM 557 - SANITARY SEWERS WILL BE ODOT ITEM 611 - CONDUIT, MISC.: " " INCH SANITARY SEWER, -----, CLASS " " BEDDING (FT.).
2. BASIS OF PAYMENT FOR CITY OF AKRON ITEM 560 - LATERALS AND STACKS WILL BE ODOT ITEM 611 - CONDUIT, MISC.: " " INCH ----- LATERAL, ----- (FT.).
3. CITY OF AKRON ITEM 561 SPECIAL FITTINGS WHICH INCLUDES Y-BRANCHES, T-BRANCHES, STUBS, SLANTS, BENDS, FLAP GATES, FRAMES AND COVERS, SPECIAL ADAPTERS OR COUPLERS AND ALL ITEMS NOT SPECIFICALLY CALLED OUT IN THE PLANS WILL BE CONSIDERED INCIDENTAL TO AND INCLUDED IN THE CONTRACT PRICES FOR ODOT ITEM 611 - CONDUIT, MISC.: " " INCH SANITARY SEWER, 707.20, CLASS "NR" BEDDING (FT.) AND ODOT ITEM 611 - CONDUIT, MISC.: " " INCH SANITARY SEWER, CLASS "B" BEDDING (FT.).

**ITEM 611 - MANHOLE, NO. 2, SANITARY, AS PER PLAN**  
**ITEM 611 - MANHOLE, NO. 3, SANITARY, AS PER PLAN**  
**ITEM 611 - MANHOLE, NO. 5, SANITARY, AS PER PLAN**  
**ITEM 611 - MANHOLE ADJUSTED TO GRADE, SANITARY, AS PER PLAN**  
**ITEM 611 - MANHOLE RECONSTRUCTED TO GRADE, SANITARY, AS PER PLAN**

ALL SANITARY SEWER MANHOLE CONSTRUCTION, ADJUSTMENT AND RECONSTRUCTION SHALL CONFORM TO ODOT ITEM 611, ODOT STANDARD CONSTRUCTION DRAWINGS MH-1.2, MH-1.3 AND MH-3.1 (DROP PIPE DETAILS), AND THE CITY OF AKRON (COA) CONSTRUCTION AND MATERIAL SPECIFICATIONS (CMS), ITEMS CONTAINED WITHIN SECTION 562 MANHOLES (AND ALL APPLICABLE SUB-SECTIONS). WHERE THERE IS A CONTRADICTION, THE COA SPECIFICATIONS WILL TAKE PRECEDENCE.

SECTIONS OF THE COA SPECIFICATION HAVE BEEN INCLUDED IN THE GENERAL NOTES WITH THE FOLLOWING MODIFICATIONS:

1. BY THIS NOTE, ALL SANITARY OR COMBINED SEWER MANHOLES SHALL BE EPOXY COATED.
2. BASIS OF PAYMENT FOR NEW MANHOLES WILL BE ODOT ITEM 611 - MANHOLE, NO. 2 AS PER PLAN (SANITARY) (EACH), ITEM 611 - MANHOLE, NO. 3, AS PER PLAN (SANITARY) (EACH) OR ITEM 611 - MANHOLE, NO. 5, AS PER PLAN (SANITARY) (EACH).
3. BASIS OF PAYMENT FOR MANHOLES ADJUSTED TO GRADE WILL BE ODOT ITEM 611 - MANHOLE ADJUSTED TO GRADE, AS PER PLAN (SANITARY) (EACH).
4. BASIS OF PAYMENT FOR MANHOLES RECONSTRUCTED TO GRADE WILL BE ODOT ITEM 611 - MANHOLE RECONSTRUCTED TO GRADE, AS PER PLAN (SANITARY) (EACH).

**ITEM SPECIAL - BACKFLOW PREVENTER, MISC.: FLAP GATE " "**

FLAP GATE SHALL BE CONSTRUCTED IN CONFORMANCE WITH COA SECTION 561 AND CITY OF AKRON STANDARD CONSTRUCTION DRAWING ON SHEET 977

**ITEM 611 - DROP CONNECTION**

DROP CONNECTION SHALL BE CONSTRUCTED AT EXISTING MANHOLES THAT EXCEED 7 FEET BETWEEN FLOWLINE AND FLOWLINE IN CONFORMANCE WITH COA SECTION 565.

611, MANHOLE MISC.: DROP CONNECTION 4 EACH.

**ITEM 611 - CONDUIT, MISC.: " " INCH SANITARY SEWER, -----, CLASS " " BEDDING**

ALL SANITARY SEWER CONSTRUCTION SHALL CONFORM TO ODOT CONSTRUCTION AND MATERIAL SPECIFICATIONS (CMS) ITEM 611 AND THE CITY OF AKRON (COA) CONSTRUCTION AND MATERIAL SPECIFICATIONS (CMS), ITEMS CONTAINED WITHIN CITY OF AKRON SECTION 557 SANITARY SEWERS (AND ALL APPLICABLE SUB-SECTIONS) WITH THE FOLLOWING ADDITION; ALL BEDDING AND BACKFILL SHALL BE #6, #67 OR #68 CRUSHED AGGREGATE AND SHALL MEET ASTM C 12 FOR RIGID PIPE AND ASTM D 2321 FOR NON-RIGID PIPE. WHERE THERE IS A CONTRADICTION, THE COA SPECIFICATIONS WILL TAKE PRECEDENCE.

**LOCATION OF PROPOSED SANITARY LATERALS**

THE LOCATION OF PROPOSED SANITARY LATERALS SHALL BE FIELD ADJUSTED TO MATCH THE ACTUAL LOCATION OF EXISTING WYE BRANCHES. EXISTING WYE BRANCHES SHOWN IN THE PLANS ARE FROM UNDERGROUND RECORDS AND SHALL BE FIELD-VERIFIED PRIOR TO CONSTRUCTING THE LATERAL CROSSING. COST OF THIS WORK IS INCLUDED IN THE RESPECTIVE SEWER PIPE ITEM. QUANTITIES FOR THIS WORK SHALL BE FROM THOSE INCLUDED IN "UNRECORDED ACTIVE SANITARY SEWER CONNECTIONS" NOTED BELOW.

**UNRECORDED ACTIVE SANITARY SEWER CONNECTIONS**

FURNISH A CONTINUANCE FOR ALL UNRECORDED ACTIVE SANITARY SEWER CONNECTIONS SUCH AS SANITARY, WASTEWATER, CURTAIN/ GRADIENT DRAINS, AND FOUNDATION FLOOR DRAINS DISTURBED BY THE WORK. FURNISH AN UNOBSTRUCTED CONTINUANCE OF THE UNRECORDED ACTIVE SANITARY SEWER CONNECTIONS TO THE SATISFACTION OF THE ENGINEER. ALL SUCH CONTINUANCE REQUIRES A RIGHT OF WAY USE PERMIT. ALL SANITARY AND SANITARY WASTEWATER CONTINUANCE MAY ALSO REQUIRE A NPDES PERMIT FROM THE OHIO ENVIRONMENTAL PROTECTION AGENCY. REPORT ALL CONTINUANCE TO THE LOCAL HEALTH DEPARTMENT.

ALL SANITARY SEWER CONNECTIONS SHALL CONFORM TO ODOT CONSTRUCTION AND MATERIAL SPECIFICATIONS (CMS) ITEM 611 AND THE CITY OF AKRON (COA) CONSTRUCTION AND MATERIAL SPECIFICATIONS (CMS), ITEMS CONTAINED WITHIN CITY OF AKRON SECTION 560 SANITARY SEWERS (AND ALL APPLICABLE SUB-SECTIONS) WITH THE FOLLOWING ADDITION; ALL BEDDING AND BACKFILL SHALL BE #6, #67 OR #68 CRUSHED AGGREGATE AND SHALL MEET ASTM C 12 FOR RIGID PIPE AND ASTM D 2321 FOR NON-RIGID PIPE. WHERE THERE IS A CONTRADICTION, THE COA SPECIFICATIONS WILL TAKE PRECEDENCE.

THE FOLLOWING ESTIMATED QUANTITIES HAVE BEEN INCLUDED IN THE GENERAL SUMMARY FOR USE AS DIRECTED BY THE ENGINEER FOR THE WORK NOTED ABOVE:

611, CONDUIT MISC.: 6 INCH HOUSE LATERAL	800 FT.
611, CONDUIT MISC.: 8 INCH HOUSE LATERAL	700 FT.
611, CONDUIT MISC.: 10 INCH HOUSE LATERAL	400 FT.
611, CONDUIT MISC.: 12 INCH HOUSE LATERAL	100 FT.

**550 - PIPE CULVERT, SEWERS, AND DRAINS**

**CITY OF AKRON ITEM 551 - GENERAL**

CITY OF AKRON 551.01 DESCRIPTION  
 CITY OF AKRON 551.02 MATERIALS  
 CITY OF AKRON 551.03 EXCAVATION  
 CITY OF AKRON 551.04 PROTECTION OF EXCAVATION  
 CITY OF AKRON 551.05(A) BEDDING FOR RIGID PIPE  
 CITY OF AKRON 551.05(B) BEDDING FOR NON-RIGID PIPE  
 CITY OF AKRON 551.06 STORING AND LAYING PIPE  
 CITY OF AKRON 551.07 JOINING PIPE  
 CITY OF AKRON 551.08 SHOP STRUTTING  
 CITY OF AKRON 551.09 BACKFILLING  
 CITY OF AKRON 551.10 RESTORATION OF STREETS AND CLEANING UP  
 CITY OF AKRON 551.11 RECONSTRUCTED PIPE  
 CITY OF AKRON 551.12 LOW PRESSURE AIR TEST, DEFLECTION TEST, AND T.V. INSPECTION  
 CITY OF AKRON 551.13 METHOD OF MEASUREMENT

KMK	4/28/16	SANITARY NOTE REVISION - REMOVE WYE BRACH REV. TO BE SHOWN IN PLANS
REV. BY	DATE	DESCRIPTION
	DATE COMPLETED	

**CITY OF AKRON 551.01 DESCRIPTION**

THIS WORK SHALL CONSIST OF THE CONSTRUCTION OR RECONSTRUCTION OF PIPE CULVERTS, SEWERS AND DRAINS (REFERRED TO BELOW AS TYPE A, TYPE B, TYPE C, AND TYPE D PIPE), COMPLETE IN PLACE AS SPECIFIED, USING PIPE OF SIZES AND TYPES CALLED FOR BY THE PLANS, PROPOSAL, OR THESE SPECIFICATIONS, AND IN CONFORMITY WITH LINES AND GRADES SHOWN ON THE PLANS AND PROFILES, OR AS ESTABLISHED BY THE ENGINEER. THIS WORK SHALL INCLUDE ALL EXCAVATING AND THE REMOVAL OF ALL MATERIALS NECESSARY FOR PLACING THE PIPE, MANHOLES, INLETS AND OTHER APPURTENANCES; MAINTAINING FLOW IN EXISTING CULVERTS, SEWERS OR DRAINS; FURNISHING, MIXING, PLACING OR REMOVING MATERIALS, INCLUDING LINING MATERIALS; FURNISHING AND PLACING BEDDING AND BACKFILLING MATERIALS AS SPECIFIED; FURNISHING, SETTING AND REMOVING OF FORMS; POINTING OR PLASTERING OF SURFACES; JOINING TO EXISTING AND PROPOSED APPURTENANCES AS REQUIRED; PERFORMING LOW PRESSURE AIR TEST AND DEFLECTION TEST AS SPECIFIED; PROTECTING EXISTING UTILITIES, STRUCTURES OR OTHER IMPROVEMENTS IN THE VICINITY OF THE PROPOSED PIPE CULVERTS, SEWERS AND DRAINS; AND CLEANING UP AND RESTORING DISTURBED FACILITIES AND STREETS AND OTHER SURFACES.

**CITY OF AKRON 551.02 MATERIALS**

PIPE SHALL BE OF THE SIZE AND KIND SPECIFIED IN THE PROPOSAL AND MEET THE REQUIREMENTS OF PERTINENT CITY OF AKRON SECTIONS OF 706 AND 707. WHEN THE KIND OF PIPE IS NOT SPECIFICALLY ITEMIZED, ANY OF THE KINDS LISTED HEREIN UNDER THE SPECIFIED PIPE TYPE MAY BE USED. HIGHER STRENGTH CONCRETE OR PLASTIC PIPE OF THE SAME TYPE MAY BE FURNISHED WHERE LOWER STRENGTH PIPE IS SPECIFIED. A THICKER METAL PIPE OF THE SAME CORRUGATION PROFILE AND TYPE MAY BE FURNISHED WHERE A LESSER THICKNESS IS PERMITTED OR SPECIFIED.

OTHER MATERIALS SHALL BE AS FOLLOWS:  
 CONCRETE .....CITY OF AKRON 499 AND 511  
 REINFORCING STEEL .....CITY OF AKRON 509.02  
 SPECIAL FITTINGS .....CITY OF AKRON 561  
 BRICK MASONRY .....CITY OF AKRON 602  
 SLAG AND LIMESTONE BEDDING.....CITY OF AKRON 703.02  
 CRUSHED GRAVEL FOR BEDDING .....CITY OF AKRON 703.04  
 MATERIAL FOR BACKFILL .....CITY OF AKRON 604.02  
 CEMENT FOR MORTAR .....CITY OF AKRON 701.07  
 SAND FOR MORTAR .....CITY OF AKRON 703.03

UNLESS OTHERWISE SPECIFIED, ALL REINFORCED CONCRETE CIRCULAR PIPE SHALL COMPLY WITH THE REQUIREMENTS OF CITY OF AKRON 706.02 AND 706.11 AND SHALL COMPLY WITH THE STANDARD SPECIFICATIONS OF ASTM C76 CLASS IV, WALL B OR WALL C, UNLESS OTHERWISE SPECIFIED ON THE PLANS.

ALL REINFORCED CONCRETE PIPE SHALL BE MANUFACTURED USING TYPE II CEMENT. ONLY VITRIFIED CLAY PIPE AND REINFORCED CONCRETE PIPE SHALL BE CONSIDERED AS RIGID PIPE MATERIALS. ALL OTHER PIPE MATERIALS LISTED HEREIN SHALL BE CONSIDERED NON-RIGID PIPE MATERIALS.

TYPE A PIPE - STORM SEWERS UNDER PAVEMENT  
 VITRIFIED CLAY PIPE.....CITY OF AKRON 706.08 WITH 706.12  
 REINFORCED CONCRETE PIPE, CLASS IV .....CITY OF AKRON 706.02 WITH 706.11  
 REINFORCED CONCRETE ELLIPTICAL PIPE.....CITY OF AKRON 706.04 WITH 706.15  
 CORRUGATED POLYETHYLENE  
 WATERTIGHT SMOOTH LINED PIPE.....CITY OF AKRON 707.23  
 GLASS FIBER REINFORCED PIPE .....CITY OF AKRON 707.25

TYPE B PIPE - STORM SEWERS NOT UNDER PAVEMENT  
 VITRIFIED CLAY PIPE.....CITY OF AKRON 706.08 WITH 706.12  
 REINFORCED CONCRETE PIPE, CLASS IV .....CITY OF AKRON 706.02 WITH 706.11  
 REINFORCED CONCRETE ELLIPTICAL PIPE.....CITY OF AKRON 706.04 WITH 706.15  
 PVC COMPOSITE SEWER PIPE.....CITY OF AKRON 707.18  
 PVC GRAVITY SEWER PIPE.....CITY OF AKRON 707.20  
 CORRUGATED POLYETHYLENE  
 WATERTIGHT SMOOTH LINED PIPE.....CITY OF AKRON 707.23  
 PVC SMOOTH INTERIOR PIPE.....CITY OF AKRON 707.24  
 GLASS FIBER REINFORCED PIPE .....CITY OF AKRON 707.25

TYPE C PIPE - SANITARY / COMBINED SEWERS  
 VITRIFIED CLAY PIPE.....CITY OF AKRON 706.08 WITH 706.12  
 REINFORCED CONCRETE PIPE, CLASS IV (30" DIAMETER AND OVER) .....CITY OF AKRON 706.03 WITH 706.11  
 REINFORCED CONCRETE ELLIPTICAL PIPE.....CITY OF AKRON 706.04 WITH 706.15  
 PVC COMPOSITE PIPE .....CITY OF AKRON 707.18  
 PVC GRAVITY SEWER PIPE.....CITY OF AKRON 707.20  
 GLASS FIBER REINFORCED PIPE .....CITY OF AKRON 707.25

TYPE D PIPE - STEEP SLOPES / SPECIAL CONDITIONS  
 HIGH DENSITY POLYETHYLENE PIPE (HDPE), SOLID WALL .....CITY OF AKRON 707.26

**CITY OF AKRON 551.03 EXCAVATION**

EXCAVATION SHALL INCLUDE THE REMOVAL AND DISPOSAL OF ALL MATERIAL, INCLUDING CONCRETE, MASONRY AND ROCK WHICH MAY BE REMOVED WITH COMMONLY USED EXCAVATION EQUIPMENT NECESSARY FOR THE CONSTRUCTION AND COMPLETION OF WORK UNDER THIS ITEM. EXCAVATION OPERATIONS SHALL BE CONDUCTED FROM THE SURFACE, EXCEPT WHERE TUNNELING IS REQUIRED ON THE PLANS OR PERMITTED BY THE ENGINEER. TUNNEL OPENINGS SHALL BE MADE SUBJECT TO THE APPROVAL OF THE ENGINEER. EXCEPT IN ROCK, WATER-BEARING EARTH, OR WHERE A GRANULAR OR CONCRETE BASE IS TO BE USED, MECHANICAL EXCAVATION OF TRENCHES SHALL BE STOPPED ABOVE THE FINAL INVERT ELEVATION SO THAT THE PIPE MAY BE LAID ON UNDISTURBED SOIL. IF OVERDIGGING OCCURS, ALL LOOSENED EARTH SHALL BE REMOVED AND THE TRENCH BOTTOM BROUGHT BACK TO GRADE, AT THE CONTRACTOR'S EXPENSE, WITH GRANULAR MATERIAL WHICH MAY BE FORTIFIED WITH CEMENT, IF SO DIRECTED BY THE ENGINEER. WIDTH OF TRENCHES, EXCEPT FOR PIPE UNDERDRAINS, IN WHICH PIPE IS TO BE INSTALLED SHALL BE SUCH AS TO PROVIDE ADEQUATE SPACE FOR WORKMEN TO PLACE AND JOINT THE PIPE PROPERLY, BUT IN EVERY CASE THE TRENCH SHALL BE KEPT TO A MINIMUM WIDTH. FOR ALL RIGID PIPE INSTALLATIONS, THE WIDTH OF THE TRENCH AT THE TOP OF THE PIPE SHALL NOT EXCEED THE OUTSIDE PIPE DIAMETER, INCLUDING BELLS, PLUS THE CLEAR WIDTH ON EACH SIDE OF THE PIPE AS LISTED IN THE FOLLOWING TABLE:

PIPE SIZE	MAXIMUM CLEAR WIDTH
6 INCH TO 24 INCH	12 INCHES
27 INCH TO 54 INCH	15 INCHES
60 INCH AND OVER	24 INCHES

FOR ALL NON-RIGID PIPE INSTALLATIONS, THE MINIMUM TRENCH WIDTH SHALL BE PER THE PIPE MANUFACTURER'S RECOMMENDATIONS, BUT AT NO TIME SHALL THE WIDTH BE LESS THAN THAT SPECIFIED IN ASTM D2321.

THE LENGTH OF TRENCH OR TUNNEL OPEN AT ANY ONE TIME SHALL CONFORM TO THE LIMITS APPROVED BY THE ENGINEER. IN GENERAL, NOT MORE THAN 100 FEET OF TRENCH SHALL BE OPENED IN ADVANCE OF THE COMPLETED WORK.

EXCAVATION SHALL BE OF SUFFICIENT DEPTH AND WIDTH TO PERMIT THE INSTALLATION OF THE WORK TO THE LINES, GRADES, AND DIMENSIONS CALLED FOR BY THE PLANS, AND FOR ALL SHEETING, PUMPING, AND DRAINING. IN GENERAL, THE SIDES OF THE TRENCH OR OTHER EXCAVATION SHALL BE VERTICAL AND THE WALLS PROPERLY SUPPORTED WITH SHEETING, BRACING OR OTHER APPROVED METHOD WHERE NECESSARY FOR THE PROTECTION OF WORKMEN, ADJACENT PROPERTY, STRUCTURES, UTILITIES OR EXISTING IMPROVEMENTS. THE WIDTH AT THE TOP OF THE EXCAVATION SHALL BE THE MINIMUM WIDTH THAT WILL PERMIT THE PROPER CONSTRUCTION OF THE SEWER OR OTHER STRUCTURES, OR THE PLACING OF SHEETING. SHOULD TWO SETS OF WOOD SHEETING BE USED, THE TOP WIDTH SHALL EXCEED THE BOTTOM WIDTH ONLY BY THE THICKNESS OF THE NECESSARY RANGERS AND PLANKING PLUS ONE INCH ON EACH SIDE FOR ADDITIONAL CLEARANCE OF LOWER SHEETING PAST UPPER RANGERS.

TRENCHES IN ROCK SHALL BE EXCAVATED TO A DEPTH NOT LESS THAN 6 INCHES BELOW THE BOTTOM OF THE PIPE BY ANY ACCEPTABLE METHOD, INCLUDING USE OF EXPLOSIVES, WITH THE APPROVAL OF THE ENGINEER. WHERE BLASTING IS PERMITTED, IT SHALL BE DONE BY PERSONS EXPERIENCED IN SUCH WORK AND IN ACCORDANCE WITH CITY OF AKRON 107.09. ALL BLASTS SHALL BE WELL COVERED, AND PROVISIONS MADE TO PROTECT PIPES, CONDUITS, SEWERS, STRUCTURES, PERSONS, AND ANY PROPERTY ADJACENT TO THE SITE OF THE WORK. NO BLASTING SHALL BE PERMITTED WITHIN TWENTY-FIVE FEET OF THE COMPLETED PIPE CULVERT, SEWER OR DRAIN.

THE CONTRACTOR SHALL PROVIDE PROPER AND SATISFACTORY MEANS AND DEVICES FOR THE REMOVAL OF ALL GROUNDWATER ENTERING THE TRENCH EXCAVATION AND REMOVE SUCH GROUNDWATER AS FAST AS IT MAY COLLECT IN SUCH MATTER AS TO NOT INTERFERE WITH THE PROSECUTION OF THE WORK. THE CONTRACTOR SHALL SUBMIT A DEWATERING PLAN TO THE ENGINEER FOR REVIEW PRIOR TO COMMENCING WORK. THE GROUNDWATER LEVEL MUST BE LOWERED ENOUGH TO ALLOW A WORKABLE TRENCH. DEWATERING SHALL BE CONTINUED UNTIL BACKFILLING IS COMPLETED IN ANY MANHOLE-TO-MANHOLE SPAN. COST OF DEWATERING SHALL BE INCLUDED IN THE PRICE BID FOR THE ITEM REQUIRING THE DEWATERING.

**ITEM 622 - PORTABLE BARRIER PLACEMENT (I-76 / I-77)**

DURING THE PLACEMENT OF THE PORTABLE BARRIER, TRAFFIC WILL BE PROHIBITED FROM OCCUPYING THE TRAVEL LANE ADJACENT TO THE BARRIER. THE BARRIER WILL BE PLACED AT NIGHT PER THE WORK HOUR RESTRICTION NOTE AND IN ACCORDANCE WITH THE PERMITTED LANE CLOSURE CHART. THE CLOSURE OF THE ADJACENT LANE WILL BE PER THE STANDARD DRAWING MT-95.30. THE CONTRACTOR WILL SUBMIT A PLAN TO THE ENGINEER FOR APPROVAL SEVEN (7) DAYS IN ADVANCE OF THE PLANNED LANE CLOSURE. WORK WILL NOT BEGIN UNTIL APPROVAL OF THE PLANS HAS BEEN GRANTED. ALL COSTS INVOLVED IN PLACING THE PORTABLE CONCRETE BARRIER WILL BE INCLUDED IN THE CONTRACT PRICE BID FOR ITEM 622 PORTABLE CONCRETE BARRIER.

**614 WORK ZONE PAVEMENT MARKINGS, AS PER PLAN**

IN ADDITION TO THE REQUIREMENTS OF 614.11, ALL CLASS 1 EDGE LINES, LANE LINES, CENTER LINES AND DOTTED LINES SHALL BE 6 INCHES WIDE AND CHANNELIZING MARKINGS SHALL BE 8 INCHES WIDE. THE APPLICATION RATES FOR THE 6 INCH LINES SHALL BE 1.5 TIMES THE RATES SPECIFIED FOR 4 INCH LINES IN TABLE 614.11-1.

**ITS MESSAGE BOARDS (I-76 / I-77)**

THE EXISTING ITS MESSAGE BOARDS IN THE VICINITY OF THE PROJECT WILL BE UTILIZED TO PROVIDE SUPPLEMENTAL INFORMATION TO THE TRAVELING PUBLIC. THE CONTRACTOR WILL NOTIFY THE PROJECT ENGINEER ONE (1) WEEK IN ADVANCE OF ANY PHASE CHANGE. THE PROJECT ENGINEER WILL COORDINATE WITH EITHER LISA BOSE AT 330-786-4817 OR BRENT KOVACS AT 330-786-2208 TO GET THE ITS MESSAGE BOARDS ADJUSTED.

**ITEM 614 - BUSINESS ENTRANCE (M4-H15) SIGN, AS PER PLAN (LOCAL)**

THE BUSINESS ENTRANCE (M4-H15) SIGN SHOULD BE PROVIDED AT EACH TEMPORARILY RELOCATED COMMERCIAL DRIVEWAY FOR WHICH THE RELOCATION IS NOT OBVIOUS TO THE MOTORIST. THE PROJECT ENGINEER SHALL DETERMINE WHETHER OR NOT THE DRIVEWAY RELOCATION IS, OR IS NOT, OBVIOUS AND WHETHER OR NOT A SIGN SHOULD BE PROVIDED. ONLY ONE SIGN PER BUSINESS SHALL BE PERMITTED. THE SIGN SHALL BE 36 INCH X 48 INCH IN SIZE WITH TYPE G OR TYPE H ORANGE RETROREFLECTIVE SHEETING. THE SIGN LEGEND SHALL BE PLACED ON BOTH SIDES OF THE SIGN (BACK TO BACK). THE SIGN SHALL HAVE THE STANDARD M4-H15 LEGEND WITH THE WORD "BUSINESS" ON THE TOP LINE, EXCEPT UNDER UNUSUAL CIRCUMSTANCES WHERE IT MAY NOT BE INTUITIVE THAT A DRIVEWAY SERVES A SPECIFIC BUSINESS. IN SUCH UNUSUAL CASES, THE ACTUAL BUSINESS NAME MAY BE SUBSTITUTED FOR THE WORD "BUSINESS".

THE SIGN SHALL BE MOUNTED ON TWO NO. 3 POSTS OR ON TEMPORARY POSTS IN ACCORDANCE WITH SCD MT-105.10 AND IN ACCORDANCE WITH THE OHIO MANUAL OF UNIFORM TRAFFIC CONTROL DEVICES, LATEST EDITION. THE SIGN SHALL BE CLEARLY VISIBLE AND SHALL CLEARLY IDENTIFY THE LOCATION OF THE DRIVEWAY. THE SIGN SHOULD BE POSITIONED AT 90 DEGREES TO THE DIRECTION(S) OF TRAFFIC. THE SIGN MAY NEED TO BE MOVED FOR EACH PHASE OF THE MAINTENANCE OF TRAFFIC OPERATIONS.

PAYMENT FOR ALL COSTS ASSOCIATED WITH MANUFACTURING, MOUNTING, RELOCATING, AND REMOVING THE SIGN, INCLUDING ALL LABOR, MATERIALS AND EQUIPMENT SHALL BE INCLUDED IN THE CONTRACT PRICE PER EACH FOR ITEM 614-BUSINESS ENTRANCE SIGN.

THE FOLLOWING ESTIMATED QUANTITY HAS BEEN CARRIED TO THE GENERAL SUMMARY FOR THIS ITEM.

ITEM 614 BUSINESS ENTRANCE SIGN, AS PER PLAN 20 EACH

**ITEM 614 - COVERING OF SIGNS (I-76 / I-77)**

THE CONTRACTOR WILL COVER ANY EXISTING AND/OR PROPOSED SIGN INSTALLATION WHICH IS IN CONFLICT WITH THE MAINTENANCE OF TRAFFIC PLANS. THE SIGNS SHALL BE COVERED IN SUCH A MANNER AS TO AVOID DAMAGING THE SIGN WHEN THE COVER IS REMOVED. THE COVER SHALL BE TOTALLY OPAQUE AND COVERS THE ENTIRE SIGN FACE. THE USE OF ADHESIVE TAPE APPLIED DIRECTLY TO THE SIGN FACE IS STRICTLY PROHIBITED. THE CONTRACTOR WILL PROVIDE ALL OF THE "CLOSED" PLAQUES NECESSARY. THE OVERLAY MAY BE RIVETED TO THE SIGN. THE CONTRACTOR SHALL PROVIDE ALL OF THE PLAQUES, SIGNS, AND SIGN PANELS NECESSARY.

UNLESS SEPARATELY ITEMIZED IN THE PLAN, THE LUMP SUM PRICE BID FOR ITEM 614-MAINTAINING TRAFFIC SHALL INCLUDE ALL COSTS NECESSARY TO COVER AND/OR MODIFY CONFLICTING SIGN INSTALLATIONS.

**ITEM 625 - LIGHT POLE MISC.: REMOVE, SALVAGE AND RE-ERECT MEDIAN LIGHT POLE WITH RECONSTRUCTION OF MEDIAN FOUNDATION (I-76 / I-77)**

CONTRACTOR SHALL REMOVE AND SALVAGE THE EXISTING MEDIAN LIGHT POLE AND LUMINAIRE. THE SALVAGED ITEMS SHALL BE STORED BY THE CONTRACTOR FOR THE DURATION OF THE NEED FOR THE CROSSOVER THROUGH THE MEDIAN. THE FOUNDATION SHALL BE REMOVED TO A DEPTH OF 12" BELOW PROPOSED GUTTER AND PER REQUIREMENTS OF ODOT CMS 202. THE CONTRACTOR SHALL CONSTRUCT A NEW 24" X 10' DEEP FOUNDATION, INCLUDING NEW PULL BOX, ANCHOR BOLTS AND MOUNTING PLATE, ADJACENT TO THE EXISTING FOUNDATION TO REMAIN BELOW GRADE. THE FOUNDATION AND PULL BOX SHALL BE CONSTRUCTED PER SCD HL-20.13. THE SALVAGED POLE AND LUMINAIRE SHALL BE RE-INSTALLED ON THE NEW FOUNDATION AND CONNECTED TO THE EXISTING LIGHTING CIRCUITRY. ALL MATERIALS AND LABOR REQUIRED FOR THE COMPLETE INSTALLATION SHALL BE INCLUDED IN THE UNIT PRICE BID PER EACH OF ITEM 625 LIGHT POLE MISC.: REMOVE, SALVAGE AND RE-ERECT MEDIAN LIGHT POLE WITH RECONSTRUCTION OF MEDIAN FOUNDATION. CONTRACTOR SHALL MAINTAIN EXISTING LIGHTING CIRCUIT, UNTIL NEW CIRCUIT IS INSTALLED.

**CONSTRUCTION ACCESS POINTS**

THE CONTRACTOR SHALL USE THE DESIGNED CONSTRUCTION ACCESS POINTS SHOWN ON SHEETS 196, 201, 206, AND 211, FOR PHASE 1, STAGE 1 AND STAGE 2 OF BOTH WOLF LEDGES AND GRANT STREET BRIDGE CONSTRUCTION. FOR ACCESS INTO THE CONSTRUCTION ZONE DURING THESE PHASES, THREE LANES SHALL BE MAINTAINED MONDAY - FRIDAY, 6 AM TO 8 AM AND 3 PM TO 6 PM. ONE LANE CAN BE CLOSED ANY TIME ON SATURDAY AND SUNDAY.

**CONSTRUCTION RESTRICTIONS**

THE FOLLOWING DISCUSSION OF CONSTRUCTION SEQUENCING RESTRICTIONS IS PROVIDED FOR THE CONTRACTOR'S BENEFIT WHEN PLANNING HIS/HER CONSTRUCTION WORK TASK SEQUENCING. ITEMS UNDER PERMITTED SEQUENCING ARE NON-BINDING AND COULD BE MODIFIED BY THE CONTRACTOR IF AN ALTERNATE MAINTENANCE OF TRAFFIC METHOD IS SELECTED, ANY APPROVED ALTERNATE MUST INCLUDE THESE RESTRICTIONS.

**RESTRICTIONS**

1. THE LOCAL STREET CONSTRUCTION MUST BE COMPLETED TO THE POINT THAT BROADWAY TRAFFIC CAN BE PLACED ONTO THE WIDENED/RELOCATED MAIN STREET BEFORE PHASE 2 CAN BEGIN.
2. EXCEPT FOR THE 2 WEEK DETOUR FOR THE CONSTRUCTION OF THE TIE-IN FOR RAMP W-5, WB EXIT TO DOWNTOWN (RAMP W-5A AND W-5) SHALL BE MAINTAINED THROUGHOUT CONSTRUCTION.
3. RAMP W-5 MUST BE COMPLETED AND OPEN BEFORE BEGINNING PHASE 3.
4. EXISTING RAMP W-9 SHALL NOT BE CLOSED UNTIL THE NEW RAMP W-9 IS COMPLETE AND OPEN.
5. WOLF LEDGES PARKWAY MUST BE COMPLETED AND OPEN TO TRAFFIC BEFORE CONSTRUCTION WHICH RESTRICTS LANES CAN BEGIN ON GRANT STREET.
6. PHASE 2 MAY BEGIN ONCE STEEL IS SET AND FALSWORK IN PLACE FOR THE GRANT STREET STRUCTURE REPLACEMENT (SUM-76-1085). THE INTENT IS TO HAVE THE GRANT STREET STRUCTURE COMPLETE TO THE POINT OF NOT REQUIRING ANY ZONES ON I-76 BEFORE PHASE 2 BEGINS.
7. BUILDING DEMOLITION WORK, INCLUDING RESTORATION OF THE SITES, SHALL BE COMPLETED BY SEPTEMBER 30, 2016.
8. WORK ON WOLF LEDGES AND GRANT STREET THAT REQUIRES AND TRAFFIC CONTROL ON I-76 SHALL NOT BEGIN BEFORE AUGUST 1, 2016.
9. THERE ARE ADJACENT BRIDGES, WITHIN CLOSE PROXIMITY TO WOLF LEDGES AND GRANT STREET THAT WILL ALSO BE UNDER CONSTRUCTION DURING THE FALL OF 2016. THE CONTRACTOR SHALL COORDINATE WITH THE ADJACENT CONTRACTORS TO MAKE SURE THE I-76 CONSTRUCTION ZONES FOR THIS PROJECT MATCH IN AND DO NOT CONFLICT WITH THE ZONES FOR THE ADJACENT PROJECTS.
10. THE WOLF LEDGES AND GRANT STREET STRUCTURES AND APPROACH ROADWAY WORK SHALL BE COMPLETE AND OPEN TO TRAFFIC BY OCTOBER 31, 2017.
11. PHASE 2 SHALL BE COMPLETED BY AUGUST 31, 2018.
12. PHASE 3 SHALL BE COMPLETED BY AUGUST 31, 2019.

DATES PROVIDED ABOVE SHALL BE CONSIDERED INTERIM COMPLETION DATES AND SHALL BE SUBJECT TO DISINCENTIVE PENALTY IN THE AMOUNT OF \$1,500 PER DAY THAT THE WORK IS NOT COMPLETE BEYOND INTERIM COMPLETION DATE.

**ITEM 630 - SIGNING MISC.: REMOVE, SALVAGE AND RE-ERECT CONCRETE MEDIAN BARRIER-MOUNTED MILE MARKER (I-76 / I-77)**

CONTRACTOR SHALL REMOVE AND SALVAGE THE EXISTING BARRIER-MOUNTED MILE MARKER PER REQUIREMENTS OF ODOT CMS 202. THE CONTRACTOR SHALL STORE THE EXISTING SIGNS FOR THE DURATION OF THE NEED FOR THE CROSSOVER THROUGH THE MEDIAN. THE EXISTING MOUNTING AND POST SHALL BE REMOVED AND REPLACED WITH NEW MOUNTING AND POST PER DETAILS ON SHEET 1135. ALL MATERIALS AND LABOR REQUIRED FOR THE COMPLETE INSTALLATION SHALL BE INCLUDED IN THE UNIT PRICE BID PER EACH OF ITEM 630 SIGNING MISC.: REMOVE, SALVAGE AND RE-ERECT CONCRETE MEDIAN BARRIER-MOUNTED MILE MARKER.

**MAINTENANCE OF TRAFFIC AND ACCESS TO PROPERTIES**

THE FOLLOWING ESTIMATED QUANTITIES HAVE BEEN INCLUDED IN THE GENERAL SUMMARY FOR USE AS DETERMINED BY THE ENGINEER FOR THE MAINTENANCE OF TRAFFIC AND ACCESS TO PROPERTIES.

ITEM 410, TRAFFIC COMPACTED SURFACE, TYPE A OR B 500 CY

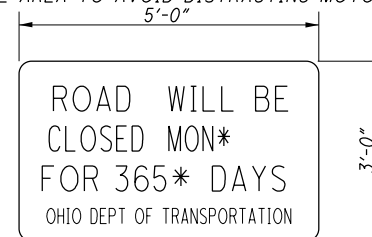
ITEM 410, TRAFFIC COMPACTED SURFACE, TYPE C 500 CY

ITEM 614, ASPHALT CONCRETE FOR MAINTAINING TRAFFIC 100 CY

DRIVES TO REMAIN OPEN AT ALL TIMES UNLESS NOTED ON THE PLANS OR AS DIRECTED BY THE ENGINEER. DRIVEWAY ACCESS MUST BE MAINTAINED AT ALL TIMES USING PARTIAL WIDTH CONSTRUCTION.

**ITEM 614, MAINTAINING TRAFFIC (NOTICE OF CLOSURE SIGN)**

NOTICE OF CLOSURE SIGNS SHALL BE ERECTED BY THE CONTRACTOR AT LEAST ONE WEEK IN ADVANCE OF THE SCHEDULED ROAD OR RAMP CLOSURE. THE SIGNS SHALL BE ERECTED ON THE RIGHT-HAND SIDE OF THE ROAD/RAMP FACING TRAFFIC CONTROL SIGNS. ON ROADWAYS, THEY SHOULD BE ERECTED AT THE POINT OF CLOSURE. THE SIGNS MAY BE ERECTED ANYWHERE ON RAMPS AS LONG AS THEY ARE VISIBLE TO THE MOTORISTS USING THE RAMP. ON ENTRANCE RAMPS, THE SIGN SHALL BE ERECTED WELL IN ADVANCE OF THE MERGE AREA TO AVOID DISTRACTING MOTORISTS.



\* CONTRACTOR SHALL USE ACTUAL CLOSURE DATE AND DURATION.

THE COST OF THE NOTICE OF CLOSURE SIGN IS CONSIDERED TO BE INCIDENTAL TO AND INCLUDED IN ITEM 614 - MAINTAINING TRAFFIC.

**ITEM 611 - SLOTTED DRAIN, TYPE 2, APP**

THIS WORK SHALL CONSIST OF FURNISHING, MAINTAINING, AND SUBSEQUENTLY REMOVING A 6" TEMPORARY SLOTTED DRAIN, TYPE 2, APP, AT THE LOCATIONS SHOWN IN THE PLAN. THIS ITEM IS USED TO ASSIST IN THE DRAINAGE OF THE CROSSOVERS DURING MOT. THIS ITEM TO BE REMOVED WHEN CROSSOVERS FOR MOT ARE NO LONGER NEEDED. ALL NECESSARY CONNECTIONS, LABOR, MATERIAL, AND EQUIPMENT TO PERFORM THE WORK AND SHALL BE PAID FOR AT THE CONTRACT PRICE PER FOOT FOR THE ITEM 611 - SLOTTED DRAIN, TYPE 2, APP.

**ITEM 611 - CATCH BASIN, NO. 6, APP**

THIS WORK SHALL CONSIST OF FURNISHING, MAINTAINING, AND SUBSEQUENTLY REMOVING A TEMPORARY CATCH BASIN, NO. 6, APP, AT THE LOCATIONS SHOWN IN THE PLAN. THIS ITEM IS USED TO ASSIST IN THE DRAINAGE OF THE CROSSOVERS DURING MOT. THIS ITEM TO BE REMOVED WHEN CROSSOVERS FOR MOT ARE NO LONGER NEEDED. 5" OF 12" CONDUIT IS TO BE USED TO MAKE THE CONNECTION TO THE EXISTING CATCH BASIN AND WILL BE INCIDENTAL TO THIS ITEM. ALL NECESSARY CONNECTIONS, LABOR, MATERIAL, AND EQUIPMENT TO PERFORM THE WORK AND SHALL BE PAID FOR AT THE CONTRACT PRICE PER EACH FOR THE ITEM 611 - CATCH BASIN, NO. 6, APP.

**LIMITATION OF STREET CLOSURES**

THE CONTRACTOR SHALL COMPLETE ALL CONSTRUCTION AND SAFETY ITEMS AND HAVE THE DESIGNATED SECTIONS OPEN TO UNRESTRICTED TRAFFIC WITH IN THE CALENDER DAYS SPECIFIED.

DESCRIPTION OF LOCATION COMPLETION DAYS

PHASE 1, STAGE 1A BROADWAY STREET AND MILLER AVENUE CLOSURE: 10 CALENDAR DAYS

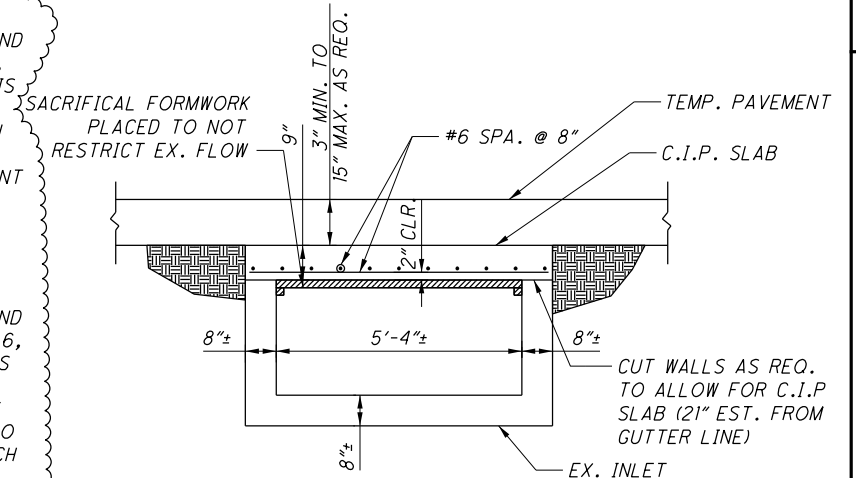
PHASE 1, STAGE 1B BROADWAY STREET AND MILLER AVENUE CLOSURE: 10 CALENDAR DAYS

PHASE 1, STAGE 1C YALE STREET CLOSURE: 21 CALENDER DAYS

PHASE 2 BROADWAY STREET AND THORNTON INTERSECTION AVENUE CLOSURE: 14 CALENDAR DAYS. NO CLOSURE OF THE BROADWAY/THORNTON INTERSECTION MAY TAKE PLACE UNTIL RAMP W-5 (WB TO NB) BRIDGE IS COMPLETE AND PAVEMENT COMPLETED TO STA 575+75+/- SO THAT THIS MOVEMENT CAN BE OPENED TO TRAFFIC AFTER THE 14 DAY INTERSECTION CLOSURE. THE EXISTING RAMP E MUST REMAIN OPEN PRIOR TO THIS CLOSURE.

**ITEM 611 - INLET MISC.: REMOVE, PROTECT AND RECONSTRUCT BARRIER MEDIAN INLET (I-76 / I-77)**

CONTRACTOR SHALL SAWCUT THE EXISTING BARRIER MEDIAN INLET TO A DEPTH OF 21" BELOW PROPOSED GUTTER AND PER REQUIREMENTS OF ODOT CMS 202. THE CONTRACTOR SHALL PROTECT THE EXISTING PIPE INVERT WITH A CONCRETE SLAB AND BACKFILL WITH PROPOSED SHOULDER PAVEMENT SECTION FOR THE DURATION OF THE NEED FOR THE CROSSOVER THROUGH THE MEDIAN. THE SLAB SHALL BE AS PER DETAIL SHOWN. CONCRETE SHALL BE CMS ITEM 511, CLASS OCI MISC. WITH 4 KSI DESIGN STRENGTH. REINFORCING SHALL BE PER CMS ITEM 509 NO SEPARATE PAYMENT WILL BE MADE FOR TIME, CONCRETE AND REBAR AND OTHER MISCELLANEOUS ITEMS REQUIRED TO COMPLETE THE WORK AS IT IS INCIDENTAL OT THIS ITEM. THE EXISTING INVERT AND ONE SEGMENT OF EXISTING PIPE SHALL BE REMOVED AND REPLACED PER SCD I-2.4. WHEN THE TIME COMES TO REPLACE THE MEDIAN BARRIER WITH NEW BARRIER THE EXISTING MEDIAN INLET MUST BE REMOVED AND THE NEW MEDIAN INLET RECONSTRUCTED IN IT'S ORIGINAL LOCATION AS APPROVED BY THE ENGINEER. ALL MATERIALS, LABOR, AND EQUIPMENT REQUIRED FOR THE COMPLETE INSTALLATION SHALL BE INCLUDED IN THE UNIT PRICE BID PER EACH OF ITEM 611 INLET MISC.: REMOVE, PROTECT AND RECONSTRUCT BARRIER MEDIAN INLET.



**DETAIL FOR ITEM 611 - INLET MISC.: REMOVE, PROTECT AND RECONSTRUCT BARRIER MEDIAN INLET (I-76 / I-77)**

KMK	5/2/16	CROSSOVER DRAINAGE-SLOTTED DRAIN & CB-6 ADDED
KMK	4/25/16	CONSTRUCTION RESTRICTIONS NOTE (6) REVISED
KMK	4/18/16	COMPLETION DATE FOR GRANT AND WOLF
MEP	2/12/16	A.C. FOR MOT QUANTITY REVISION
REV. BY	DATE	DESCRIPTION
	DATE COMPLETED	

CALCULATED
DAH
CHECKED
RT

REFERENCE NO.	SHEET NO.	LOCATION	PARTICIPATION (100% CITY OR PROJECT)	202	611	611	611	614	614	614	614	614	614	614	614	614	614	614	614	614	614	615	622	622	622	622	625	630	630	630			
				CONCRETE BARRIER REMOVED	SLOTTED DRAIN, TYPE 2, AS PER PLAN	CATCH BASIN, NO. 6, AS PER PLAN	INLET, MISC.: REMOVE, PROTECT AND RECONSTRUCT BARRIER MEDIAN INLET	WORK ZONE IMPACT ATTENUATOR (UNIDIRECTIONAL)	WORK ZONE IMPACT ATTENUATOR (BIDIRECTIONAL)	WORK ZONE RAISED PAVEMENT MARKER	BARRIER REFLECTOR, TYPE B	MAINTAINING TRAFFIC, MISC.: TEMPORARY DRAINAGE OUTLET FOR MOT	WORK ZONE LANE LINE, CLASS 1	WORK ZONE LANE LINE, CLASS 1, AS PER PLAN	WORK ZONE CENTER LINE, CLASS 1	WORK ZONE EDGE LINE, CLASS 1	WORK ZONE EDGE LINE, CLASS 1, AS PER PLAN	WORK ZONE CHANNELIZING LINE, CLASS 1	WORK ZONE CHANNELIZING LINE, CLASS 1, AS PER PLAN	WORK ZONE DOTTED LINE, CLASS 1, 642 PAINT	WORK ZONE DOTTED LINE, CLASS 1, 642 PAINT, AS PER PLAN	WORK ZONE STOP LINE, CLASS 1	WORK ZONE ARROW, CLASS 1	PAVEMENT FOR MAINTAINING TRAFFIC, CLASS A	CONCRETE BARRIER, SINGLE SLOPE, TYPE BI	BARRIER TRANSITION	CONCRETE BARRIER, END ANCHORAGE, REINFORCED, TYPE BI	PORTABLE BARRIER, 50", AS PER PLAN	PORTABLE BARRIER, 50", BRIDGE MOUNTED, AS PER PLAN	LIGHT POLE, MISC.: REMOVE, SALVAGE AND RE-ERECT MEDIAN LIGHT POLE WITH RECONSTRUCTION OF MEDIAN FOUNDATION	SIGN ERECTED, TEMPORARY OVERLAY	REMOVAL OF GROUND MOUNTED SIGN AND REERECTION, AS PER PLAN	SIGNING, MISC.: REMOVE, SALVAGE AND RE-ERECT CONCRETE MEDIAN BARRIER-MOUNTED MILE MARKER
		FROM TO		FT	FT	EACH	EACH	EACH	EACH	EACH	EACH	EACH	EACH	EACH	EACH	EACH	EACH	EACH	EACH	EACH	EACH	SY	FT	EACH	EACH	FT	FT	EACH	SF	EACH	EACH		
S. MAIN ST., S. BROADWAY ST. & E. THORNTON ST.																																	
S-2		NOT USED																															
C-1	164-165	110+25 113+80	01/IMS/PV											0.07																			
EW-3	164-165	110+25 113+90	01/IMS/PV																														
EW-2	164-165	110+15 113+90	01/IMS/PV																														
EY-3	165	114+00 114+48	01/IMS/PV																														
EY-4	165	114+00 114+48	01/IMS/PV																														
S-3	165	113+56	01/IMS/PV																														
S-4	165	114+62	01/IMS/PV																														
EW-4	165	114+48 118+63	01/IMS/PV																														
EW-5	165	114+54 118+47	01/IMS/PV																														
C-2	165	114+62 118+58	01/IMS/PV																														
S-5	165	118+58	01/IMS/PV																														
EY-5	165	118+47 119+00	01/IMS/PV																														
EY-6	165	118+63 119+00	01/IMS/PV																														
EW-6	165-166	119+49 127+50	01/IMS/PV																														
S-6	165	119+49	01/IMS/PV																														
C-3	165-166	119+49 122+00	01/IMS/PV																														
EY-7	166-167	22+00 29+00	01/IMS/PV																														
EY-8	166	22+00 25+05	01/IMS/PV																														
PHASE 1 / STAGE 2B SUBTOTALS															0.20	0.68																	
		I.R. 76																															
	180-181	444+50 449+30	01/IMS/PV	400	450	1																											
	180-181	442+00 448+50	01/IMS/PV																														
	180-184	445+00 473+45	01/IMS/PV																														
	180	443+00 448+00	01/IMS/PV																														
	183-184	471+00 473+50	01/IMS/PV																														
	184	475+26 477+18	01/IMS/PV																														
	184	475+09 476+95	01/IMS/PV																														
	185-189	482+24 520+00	01/IMS/PV																														
	186-189	489+10 514+00	01/IMS/PV																														
	186-188	489+09 505+00	01/IMS/PV																														
	186-188	489+25 505+23	01/IMS/PV																														
	188-189	509+00 514+00	01/IMS/PV	500		1																											
PHASE 1 SHOULDER STRENGTHENING SUBTOTALS				900	450	2																											
S. MAIN ST. AND S. BROADWAY ST.																																	
C-1	168-169	14+66 19+73	01/IMS/PV																														
LL-1	168-169	17+72 19+73	01/IMS/PV																														
LL-2	168-169	17+56 18+50	01/IMS/PV																														
CH-1	168-169	16+39 19+73	01/IMS/PV																														
LL-3	168-169	18+00 19+73	01/IMS/PV																														
LL-4		NOT USED	01/IMS/PV																														
A-1	169	18+21	01/IMS/PV																														
A-2	169	18+87	01/IMS/PV																														
A-3	169	19+52	01/IMS/PV																														
PHASE 1 / STAGE 3 SUBTOTALS															0.16	0.10																	
PHASE 1 SUBTOTALS (CARRIED TO SHEET 80)				900	450	2								0.16	0.30	0.68																	

CALCULATED		AP	RT
CHECKED			
<b>MAINTENANCE OF TRAFFIC SUBSUMMARY</b>			
<b>SUM -76 -10.00</b>		(77)	
1822			

KMK	5/2/16	CROSSOVER DRAINAGE - SLOTTED DRAINS AND CB-6 ADDED
KMK	5/2/16	BARRIER REMOVED QUANTITY REVISED - MOT SUBSUMMARY
REV. BY	DATE	DESCRIPTION
		DATE COMPLETED

REFERENCE NO.	SHEET NO.	LOCATION	PARTICIPATION (100% CITY OR PROJECT)	202	611	611	611	614	614	614	614	614	614	614	614	614	614	614	614	614	614	614	615	622	622	622	622	625	630	630	630	
				CONCRETE BARRIER REMOVED	SLOTTED DRAIN, TYPE 2, AS PER PLAN	CATCH BASIN, NO. 6, AS PER PLAN	INLET, MISC.: REMOVE, PROTECT AND RECONSTRUCT BARRIER MEDIAN INLET	WORK ZONE IMPACT ATTENUATOR (UNIDIRECTIONAL)	WORK ZONE IMPACT ATTENUATOR (BIDIRECTIONAL)	WORK ZONE RAISED PAVEMENT MARKER	BARRIER REFLECTOR, TYPE B	MAINTAINING TRAFFIC, MISC.: TEMPORARY DRAINAGE OUTLET FOR MOT	WORK ZONE LANE LINE, CLASS I	WORK ZONE LANE LINE, CLASS I, AS PER PLAN	WORK ZONE CENTER LINE, CLASS I	WORK ZONE EDGE LINE, CLASS I	WORK ZONE EDGE LINE, CLASS I, AS PER PLAN	WORK ZONE CHANNELIZING LINE, CLASS I	WORK ZONE CHANNELIZING LINE, CLASS I, AS PER PLAN	WORK ZONE DOTTED LINE, CLASS I, 642 PAINT	WORK ZONE DOTTED LINE, CLASS I, 642 PAINT, AS PER PLAN	WORK ZONE STOP LINE, CLASS I	WORK ZONE ARROW, CLASS I	PAVEMENT FOR MAINTAINING TRAFFIC, CLASS A	CONCRETE BARRIER, SINGLE SLOPE, TYPE BI	BARRIER TRANSITION	CONCRETE BARRIER, END ANCHORAGE, REINFORCED, TYPE BI	PORTABLE BARRIER, 50", AS PER PLAN	PORTABLE BARRIER, 50", BRIDGE MOUNTED, AS PER PLAN	LIGHT POLE, MISC.: REMOVE, SALVAGE AND RE-ERECT MEDIAN LIGHT POLE WITH RECONSTRUCTION OF MEDIAN FOUNDATION	SIGN ERECTED, TEMPORARY OVERLAY	REMOVAL OF GROUND MOUNTED SIGN AND REERECTION, AS PER PLAN
FROM	TO	FT	FT	EACH	EACH	EACH	EACH	EACH	EACH	EACH	EACH	EACH	EACH	EACH	EACH	EACH	EACH	EACH	EACH	EACH	EACH	SY	FT	EACH	EACH	FT	FT	EACH	SF	EACH	EACH	
		GRANT ST.																														
CH-4	206-208	496+50	517+70	01/IMS/PV																												
CH-5	206-208	496+50	517+70	01/IMS/PV																												
CH-6	206-208	496+50	517+70	01/IMS/PV																												
EW-2	206-208	496+50	514+70	01/IMS/PV																												
EY-2	206-208	496+50	514+70	01/IMS/PV																												
PB-1	205-206	495+30	501+00	01/IMS/PV																												
PB-1A	206-207	501+00	509+70	01/IMS/PV																												
PB-2	206	496+50	498+50	01/IMS/PV																												
PB-2A	206-208	498+50	513+14	01/IMS/PV																												
PB-3	206	498+34	499+53	01/IMS/PV																												
PB-4	206	498+74	500+29	01/IMS/PV																												
PHASE 1 / STAGE 1 SUBTOTALS								3									0.80															
		GRANT ST.																														
CH-1	210-212	493+44	506+66	01/IMS/PV																												
CH-2	210-212	493+44	506+66	01/IMS/PV																												
CH-3	210-212	493+44	506+66	01/IMS/PV																												
EW-1	210-212	493+44	506+66	01/IMS/PV																												
EY-1	210-212	493+44	506+66	01/IMS/PV																												
CH-4	210-212	493+18	511+55	01/IMS/PV																												
CH-5	210-212	493+18	511+55	01/IMS/PV																												
CH-6	210-212	493+18	511+55	01/IMS/PV																												
EY-2	210-212	493+18	511+55	01/IMS/PV																												
EY-2	210-212	493+18	511+55	01/IMS/PV																												
PB-1	210-212	493+18	508+44	01/IMS/PV																												
PB-2	211	497+74	500+53	01/IMS/PV																												
PB-3	211	498+77	502+75	01/IMS/PV																												
CH-1	213-217	484+50	514+70	01/IMS/PV																												
CH-2	213-217	483+60	514+70	01/IMS/PV																												
CH-3	213-217	483+60	514+70	01/IMS/PV																												
CH-4	213-217	485+09	514+60	01/IMS/PV																												
CH-5	213-217	485+09	514+60	01/IMS/PV																												
CH-6	213-217	485+09	514+60	01/IMS/PV																												
EW-1	214-217	482+50	514+70	01/IMS/PV																												
EY-1	214-217	483+60	514+70	01/IMS/PV																												
PB-1	213-215	483+07	498+50	01/IMS/PV																												
PB-1A	215-217	498+50	513+10	01/IMS/PV																												
EY-2	213-216	485+09	514+60	01/IMS/PV																												
EW-2	213-216	485+09	514+60	01/IMS/PV																												
PB-2	214-215	495+61	501+00	01/IMS/PV																												
PB-2A	215-216	501+00	509+70	01/IMS/PV																												
PB-3	215	498+34	499+53	01/IMS/PV																												
PB-4	215	498+74	500+29	01/IMS/PV																												
PHASE 1 / STAGE 3 SUBTOTALS								4																								
PHASE 1 SUBTOTALS (THIS SHEET)								7																								
SUBTOTALS (CARRIED FROM SHEET 73)																																
SUBTOTALS (CARRIED FROM SHEET 74)								1																								
SUBTOTALS (CARRIED FROM SHEET 75)																																
SUBTOTALS (CARRIED FROM SHEET 76)																																
SUBTOTALS (CARRIED FROM SHEET 77)																																
SUBTOTALS (CARRIED FROM SHEET 78)																																
SUBTOTALS (CARRIED FROM SHEET 79)																																
PHASE 1 TOTALS (CARRIED TO SHEET 87)								11																								

KMK	5/2/16	CROSSOVER DRAINAGE - SLOTTED DRAINS AND CB-6 ADDED
KMK	5/2/16	BARRIER REMOVED QUANTITY REVISED - MOT SUBSUMMARY
KMK	4/21/16	TEMP. OVERLAY QUANTITY REVISION
MEP	3/30/16	TEMP. OVERLAY QUANTITY REVISION
REV. BY	DATE	DESCRIPTION
DATE COMPLETED		

**MAINTENANCE OF TRAFFIC SUBSUMMARY**

**SUM - 76 - 10.00**

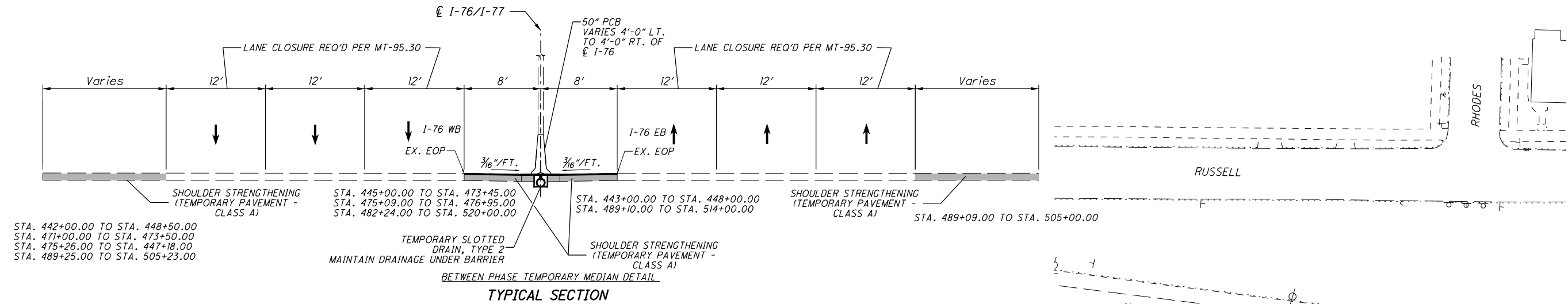
CALCULATED  
AP  
CHECKED  
RT

80  
1822

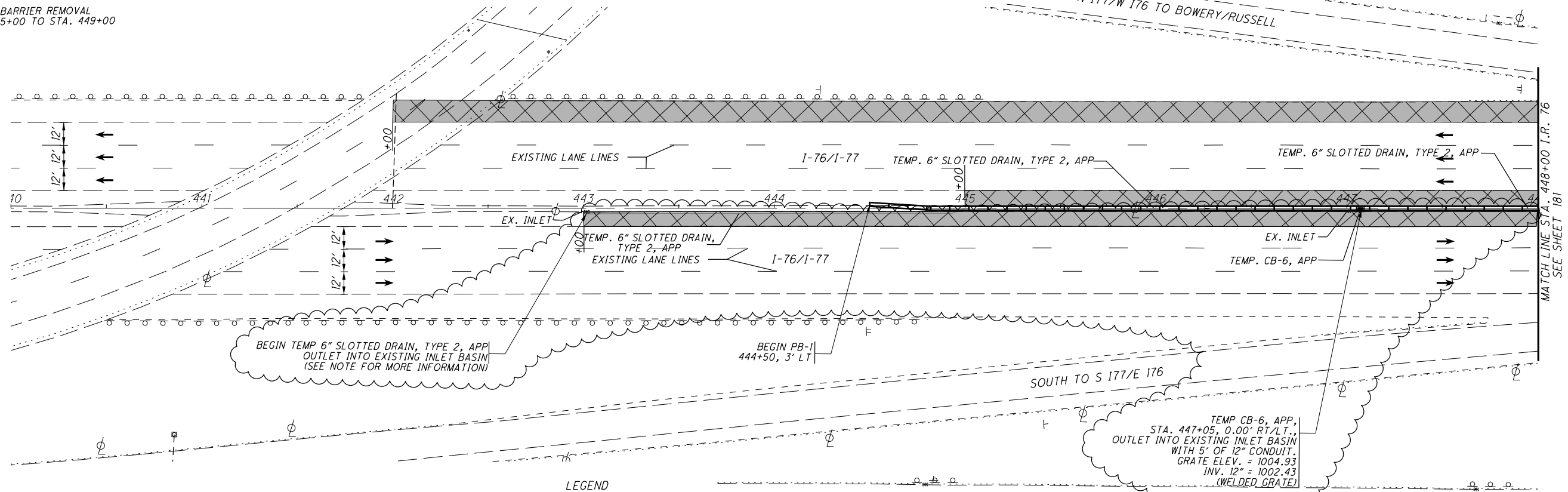




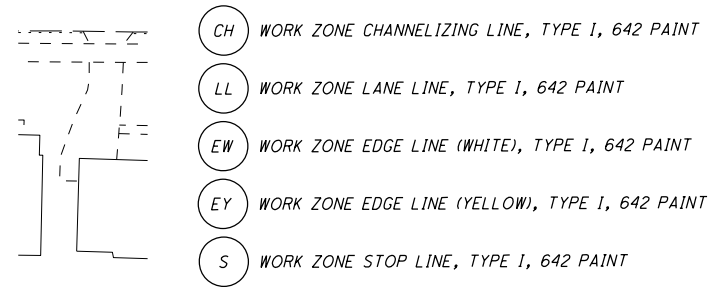
NOTE: FOR SIGN PLACEMENT, LANE TAPERS, ETC., SEE MT-95.30 LANE ADJACENT TO WORK ZONE WILL BE CLOSED DURING THE HOURS OF CONSTRUCTION PER LANE CLOSURE POLICY.



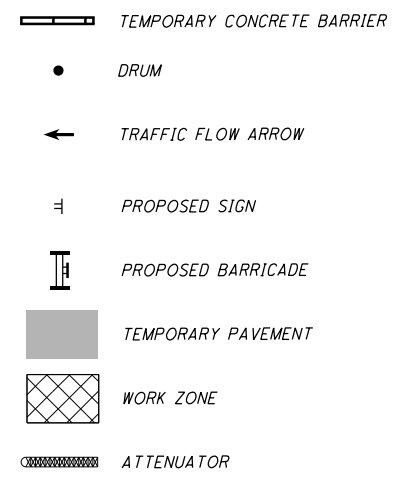
NOTE: MEDIAN BARRIER REMOVAL STA. 445+00 TO STA. 449+00



PAVEMENT MARKING LEGEND



LEGEND



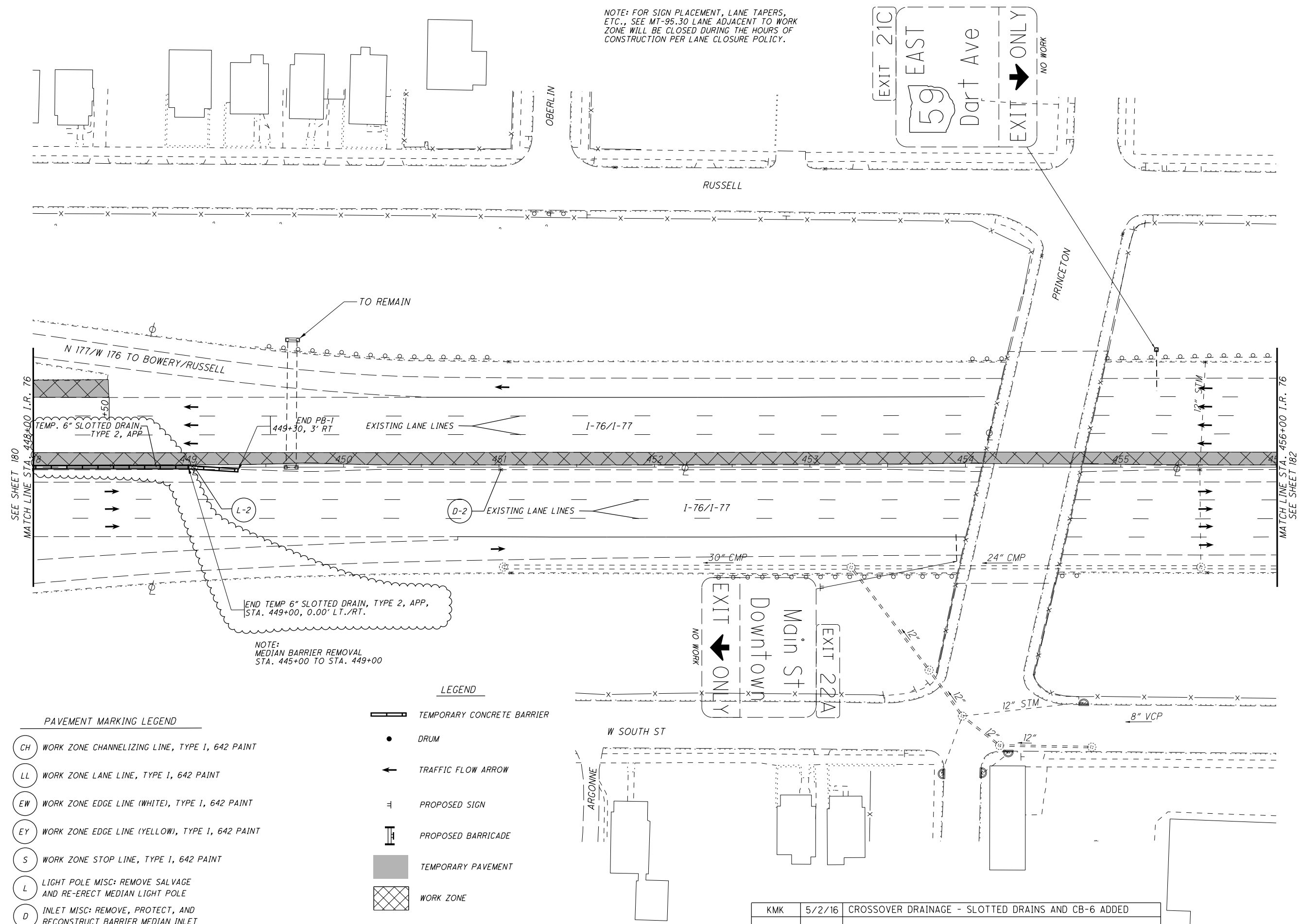
NOTE: CONTRACTOR SHALL REMOVE OR COVER EXISTING CONFLICTING SIGNS AND PAVEMENT MARKINGS FOR MAINTENANCE OF TRAFFIC QUANTITIES, SEE SHEETS 73 -87

TEMP 6" SLOTTED DRAIN, TYPE 2, APP, TO BE OFFSET 1' FROM TOE OF MEDIAN BARRIER FROM STA. 443+00 TO STA. 445+00. FROM STA. 445+00 TO 449+00 THE TEMP 6" SLOTTED DRAIN, TYPE 2, APP, TO BE CENTERED ON I.R. 76 CENTERLINE.

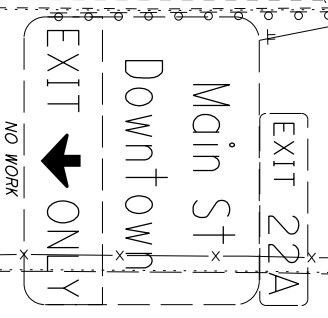
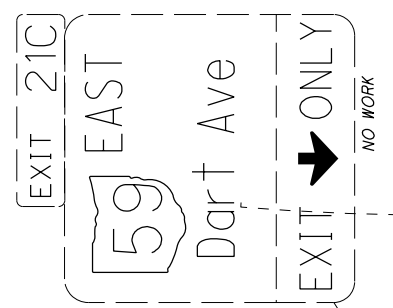
I:\Projects\Main\_Broadway\MOT\Sheets\77269MP001\_1C\_A.dgn 5/4/2016 1:11:10 PM kyle\_koppes

REV. BY	DATE	DESCRIPTION
KMK	5/2/16	CROSSOVER DRAINAGE - SLOTTED DRAINS AND CB-6 ADDED

I:\Projects\Main\_Broadway\MOT\Sheets\77269WP002\_IC\_A.dgn 5/4/2016 1:11:11 PM kyle\_koppes



NOTE: FOR SIGN PLACEMENT, LANE TAPERS, ETC., SEE MT-95.30 LANE ADJACENT TO WORK ZONE WILL BE CLOSED DURING THE HOURS OF CONSTRUCTION PER LANE CLOSURE POLICY.



- PAVEMENT MARKING LEGEND**
- (CH) WORK ZONE CHANNELIZING LINE, TYPE 1, 642 PAINT
  - (LL) WORK ZONE LANE LINE, TYPE 1, 642 PAINT
  - (EW) WORK ZONE EDGE LINE (WHITE), TYPE 1, 642 PAINT
  - (EY) WORK ZONE EDGE LINE (YELLOW), TYPE 1, 642 PAINT
  - (S) WORK ZONE STOP LINE, TYPE 1, 642 PAINT
  - (L) LIGHT POLE MISC: REMOVE SALVAGE AND RE-ERECT MEDIAN LIGHT POLE
  - (D) INLET MISC: REMOVE, PROTECT, AND RECONSTRUCT BARRIER MEDIAN INLET

- LEGEND**
- [Symbol] TEMPORARY CONCRETE BARRIER
  - (•) DRUM
  - [Symbol] TRAFFIC FLOW ARROW
  - [Symbol] PROPOSED SIGN
  - [Symbol] PROPOSED BARRICADE
  - [Symbol] TEMPORARY PAVEMENT
  - [Symbol] WORK ZONE
  - [Symbol] ATTENUATOR

NOTE: CONTRACTOR SHALL REMOVE OR COVER EXISTING CONFLICTING SIGNS AND PAVEMENT MARKINGS

FOR MAINTENANCE OF TRAFFIC QUANTITIES, SEE SHEETS 73 -87

KMK	5/2/16	CROSSOVER DRAINAGE - SLOTTED DRAINS AND CB-6 ADDED
REV. BY	DATE	DESCRIPTION

CALCULATED  
AB  
CHECKED  
RT

HORIZONTAL SCALE IN FEET

**SHOULDER STRENGTHENING ON I-76 / I-77  
PHASE 1**

**SUM-76-10.00**

181  
1822



PAVEMENT MARKING LEGEND

- CH WORK ZONE CHANNELIZING LINE, TYPE 1, 642 PAINT
- LL WORK ZONE LANE LINE, TYPE 1, 642 PAINT
- EW WORK ZONE EDGE LINE (WHITE), TYPE 1, 642 PAINT
- EY WORK ZONE EDGE LINE (YELLOW), TYPE 1, 642 PAINT
- S WORK ZONE STOP LINE, TYPE 1, 642 PAINT

LEGEND

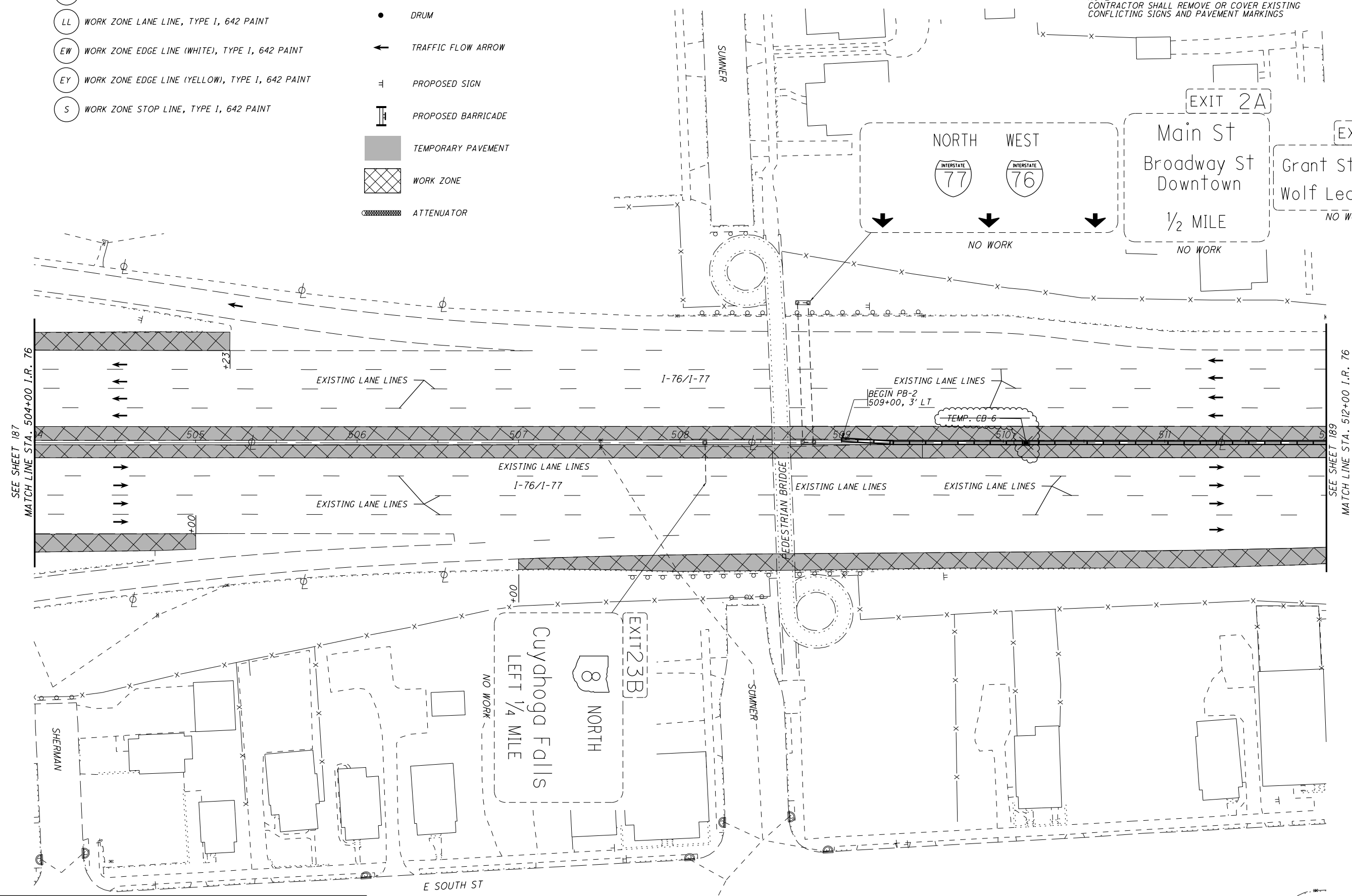
- TEMPORARY CONCRETE BARRIER
- DRUM
- TRAFFIC FLOW ARROW
- PROPOSED SIGN
- PROPOSED BARRICADE
- TEMPORARY PAVEMENT
- WORK ZONE
- ATTENUATOR

NOTE:  
MEDIAN BARRIER REMOVAL  
STA. 509+00 TO STA. 514+00

FOR MAINTENANCE OF TRAFFIC QUANTITIES, SEE  
SHEETS 73 -87

NOTE: FOR SIGN PLACEMENT, LANE TAPERS,  
ETC., SEE MT-95.30 LANE ADJACENT TO WORK  
ZONE WILL BE CLOSED DURING THE HOURS OF  
CONSTRUCTION PER LANE CLOSURE POLICY.

NOTE:  
CONTRACTOR SHALL REMOVE OR COVER EXISTING  
CONFLICTING SIGNS AND PAVEMENT MARKINGS



SEE SHEET 187  
MATCH LINE STA. 504+00 I.R. 76

SEE SHEET 189  
MATCH LINE STA. 512+00 I.R. 76



CALCULATED  
AB  
CHECKED  
RT

**SHOULDER STRENGTHENING ON I-76 / I-77**  
**PHASE 1**

**SUM -76 -10.00**

188  
1822

I:\Projects\Main\_Broadway\MOT\_Sheets\77269MP009\_1C\_A.dgn 5/4/2016 8:35:01 AM kyle\_koppes

REV. BY	DATE	DESCRIPTION
KMK	5/2/16	CROSSOVER DRAINAGE - SLOTTED DRAINS AND CB-6 ADDED

PAVEMENT MARKING LEGEND

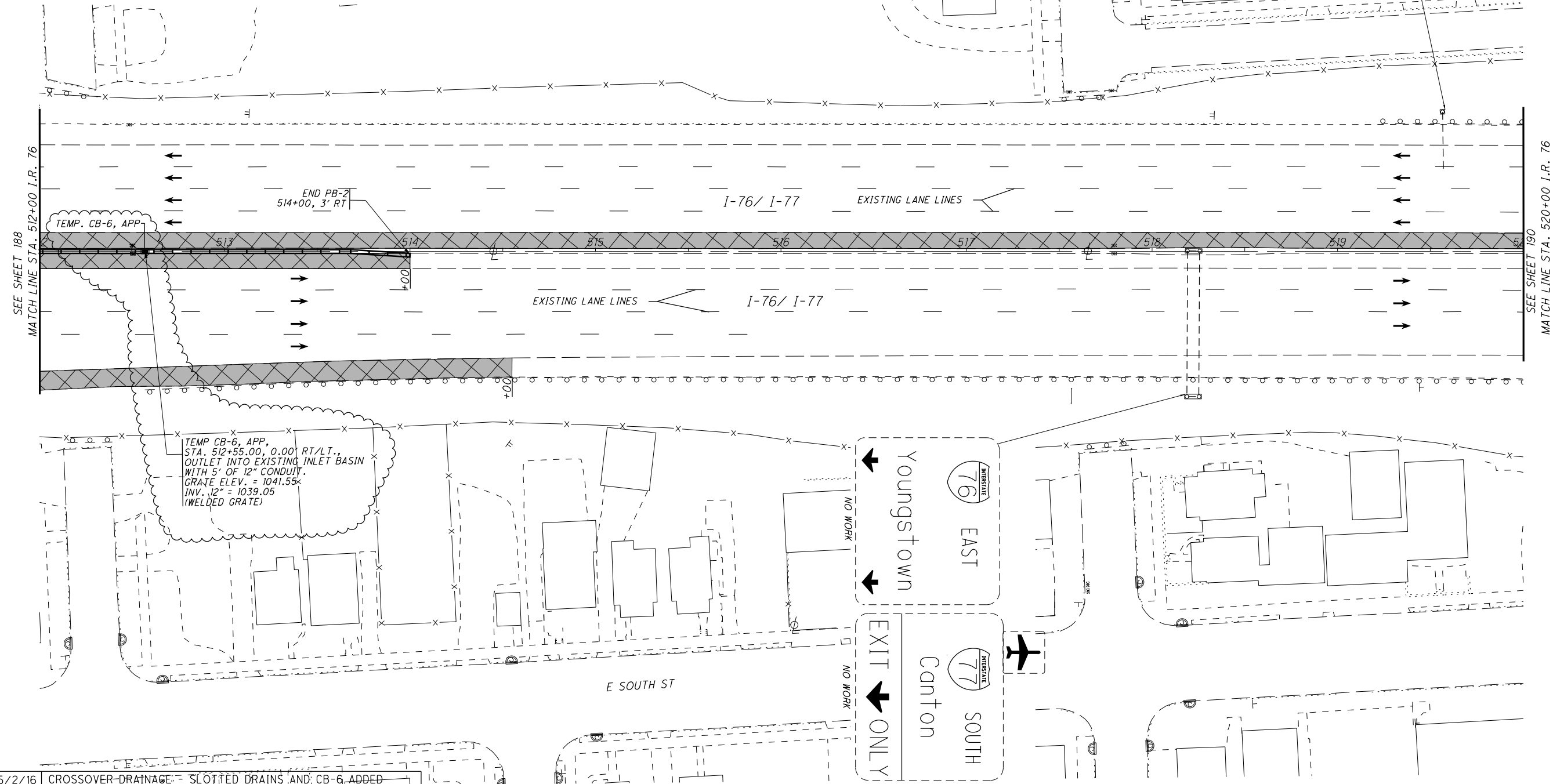
- CH WORK ZONE CHANNELIZING LINE, TYPE 1, 642 PAINT
- LL WORK ZONE LANE LINE, TYPE 1, 642 PAINT
- EW WORK ZONE EDGE LINE (WHITE), TYPE 1, 642 PAINT
- EY WORK ZONE EDGE LINE (YELLOW), TYPE 1, 642 PAINT
- S WORK ZONE STOP LINE, TYPE 1, 642 PAINT

NOTE:  
CONTRACTOR SHALL REMOVE OR COVER EXISTING  
CONFLICTING SIGNS AND PAVEMENT MARKINGS  
FOR MAINTENANCE OF TRAFFIC QUANTITIES, SEE  
SHEETS 73 -87

LEGEND

- TEMPORARY CONCRETE BARRIER
- DRUM
- TRAFFIC FLOW ARROW
- PROPOSED SIGN
- PROPOSED BARRICADE
- TEMPORARY PAVEMENT
- WORK ZONE
- ATTENUATOR

NOTE: FOR SIGN PLACEMENT, LANE TAPERS,  
ETC., SEE MT-95.30 LANE ADJACENT TO WORK  
ZONE WILL BE CLOSED DURING THE HOURS OF  
CONSTRUCTION PER LANE CLOSURE POLICY.



CALCULATED  
AB  
CHECKED  
RT

0 30 60  
15  
HORIZONTAL  
SCALE IN FEET

North arrow pointing up.

SHOULDER STRENGTHENING ON I-76 / I-77  
PHASE 1

SUM -76 -10.00

189  
1822

I:\Projects\Main\_Broadway\MOT\Sheets\77269MP010\_1C\_A.dgn 5/4/2016 1:11:11 PM kyle\_koppes

REV. BY	DATE	DESCRIPTION
KMK	5/2/16	CROSSOVER DRAINAGE - SLOTTED DRAINS AND CB-6 ADDED







I:\Projects\Main\_Broadway\_Roadway\_Sheets\77269GG001.dgn 5/4/2016 10:53:23 AM kyle\_koppes

OFFICE CALCS	SHEET NUMBER																						PARTICIPATION		ITEM	ITEM EXT.	GRAND TOTAL	UNIT	DESCRIPTION	SEE SHEET NO.																																	
	42	43	44	45	46	47	48	49	50	55	63	64	65	66	67	68	87	312	325	328	336	355	356	367							368	369	370	699	851	970	1183	1237	01/IMS/PV	04/IMS/OT/AKRN																							
										LANDSCAPING (CONT.)																																																					
																															53	53		661	40031	53	EACH	DECIDUOUS TREE, 6' HEIGHT, CRUSADER HAWTHORN, AS PER PLAN	1225																								
																															76		76	661	40101	76	EACH	DECIDUOUS TREE, 2-1/2" CALIPER, PRINCETON ELM TREE GRATE, AS PER PLAN	1225																								
																															53	53		661	40101	53	EACH	DECIDUOUS TREE, 2-1/2" CALIPER, PRINCETON ELM TREE, AS PER PLAN	1225																								
																															3		3	661	40101	3	EACH	DECIDUOUS TREE, 2-1/2" CALIPER, FRONTIER ELM TREE GRATE, AS PER PLAN	1225																								
																															22		22	661	40101	22	EACH	DECIDUOUS TREE, 2-1/2" CALIPER, SKYLINE HONEYLOCUST, AS PER PLAN	1225																								
																															15		15	661	40101	15	EACH	DECIDUOUS TREE, 2-1/2" CALIPER, IVORY SILK JAPANESE LILAC TREE, AS PER PLAN	1225																								
																															177	177		661	50121	177	EACH	EVERGREEN TREE, 6' HEIGHT, WHITE SPRUCE, AS PER PLAN	1225																								
																															1		1	661	99900	1	EACH	PLANTING, MISC.: SKYLINE HONEYLOCUST (4" B&B)	1225																								
										RETAINING WALLS																																																					
										FOR RETAINING WALLS GENERAL SUMMARY & MODULAR CONCRETE BLOCK WALL, SEE SHEETS 1619-1620																																																					
										BUILDING DEMOLITION																																																					
																											LS						LS	202	56000	LS	BUILDING DEMOLISHED: PARCEL #5 - 841 SOUTH BROADWAY, 2-STORY BRICK OFFICE/WAREHOUSE	63																									
																											LS						LS	202	56000	LS	BUILDING DEMOLISHED: PARCEL #5A - 855 SWEITZER, BRICK OFFICE/WAREHOUSE	63																									
																											LS						LS	202	56000	LS	BUILDING DEMOLISHED: PARCEL #57 - 66 WEST SOUTH, 2-STORY FRAME & GARAGE	63																									
																											LS						LS	SPECIAL	69098400	LS	MISC.: NOTIFICATION AND COORDINATION: PARCEL #5 - 841 SOUTH BROADWAY STREET	63																									
																											LS						LS	SPECIAL	69098400	LS	MISC.: NOTIFICATION AND COORDINATION: PARCEL #5A - 855 SWEITZER AVENUE	63																									
																											LS						LS	SPECIAL	69098400	LS	MISC.: NOTIFICATION AND COORDINATION: PARCEL #57 - 66 WEST SOUTH STREET	63																									
																											LS						LS	SPECIAL	69098400	LS	MISC.: ABATEMENT OF REGULATED UNIVERSAL AND HAZARDOUS MATERIAL/WASTE: PARCEL #5 - 841 SOUTH BROADWAY STREET	63																									
																											LS						LS	SPECIAL	69098400	LS	MISC.: ABATEMENT OF REGULATED UNIVERSAL AND HAZARDOUS MATERIAL/WASTE: PARCEL #5A - 855 SWEITZER AVENUE	63																									
																											LS						LS	SPECIAL	69098400	LS	MISC.: ABATEMENT OF REGULATED UNIVERSAL AND HAZARDOUS MATERIAL/WASTE: PARCEL #57 - 66 WEST SOUTH STREET	63																									
										NOISE BARRIERS																																																					
										FOR NOISE BARRIERS GENERAL SUMMARY, SEE SHEET 815																																																					
										STRUCTURES																																																					
										FOR BRIDGE NO. SUM-76-1034 L/R ESTIMATED QUANTITIES, SEE SHEET 1242																																																					
										FOR BRIDGE NO. SUM-76-1041 L/R ESTIMATED QUANTITIES, SEE SHEET 1304																																																					
										FOR BRIDGE NO. SUM-76-1043 ESTIMATED QUANTITIES, SEE SHEET 1365																																																					
										FOR BRIDGE NO. SUM-76-1044 ESTIMATED QUANTITIES, SEE SHEET 1394																																																					
										FOR BRIDGE NO. SUM-76-1051 ESTIMATED QUANTITIES, SEE SHEET 1426																																																					
										FOR BRIDGE NO. SUM-76-1075 ESTIMATED QUANTITIES, SEE SHEET 1468																																																					
										FOR BRIDGE NO. SUM-76-1085 ESTIMATED QUANTITIES, SEE SHEET 1510																																																					
										FOR BRIDGE NO. SUM-SOUTH-0036 ESTIMATED QUANTITIES, SEE SHEET 1545																																																					
										FOR BRIDGE NO. SUM-BARGE-0116 ESTIMATED QUANTITIES, SEE SHEET 1587																																																					
										MAINTENANCE OF TRAFFIC																																																					
																															500		410	12000	500	CY	TRAFFIC COMPACTED SURFACE, TYPE A OR B																										
																																500		410	13000	500	CY	TRAFFIC COMPACTED SURFACE, TYPE C																									
																															450		611	97011	450	FT	SLOTTED DRAIN, TYPE 2, AS PER PLAN	68																									
																															2		611	98371	2	EACH	CATCH BASIN, NO. 6, AS PER PLAN	68																									
																															2		611	99500	2	EACH	INLET, MISC.: REMOVE, PROTECT AND RECONSTRUCT BARRIER MEDIAN INLET	68																									
KMK	5/2/16	CROSSOVER DRAINAGE-SLOTTED DRAINS AND CB-6 ADDED																												450																																	68
KMK	3/28/16	REMOVE ITEMS FOR PARCEL #57																												2																																	68
																																							68																								
																																								68																							

GENERAL SUMMARY

SUM - 76 - 10.00

REV. BY	DATE	DESCRIPTION
		DATE COMPLETED





I:\Projects\Main\_Broadway\Roadway\Sheets\72696S002.dgn 5/3/2016 2:36:02 PM Kyle\_Koppes

PLAN SHEET NO.	REFERENCE NO.	STATION		SIDE	PARTICIPATION (01/IMS/PV OR 04/IMS/OT/AKRN)	601	606	606	606	606	609	609	622	622	622	622	622	622	622	622	622	622	622	FOR DEDUCT INFO ONLY				
		CONCRETE SLOPE PROTECTION	GUARDRAIL, TYPE MGS			BRIDGE TERMINAL ASSEMBLY, TYPE 1	BRIDGE TERMINAL ASSEMBLY, TYPE 2	IMPACT ATTENUATOR, TYPE 3 UNIDIRECTIONAL	CURB, TYPE 4-A	CURB, TYPE 4-C	CONCRETE BARRIER, SINGLE SLOPE, TYPE B	CONCRETE BARRIER, SINGLE SLOPE, TYPE BI	CONCRETE BARRIER, SINGLE SLOPE, TYPE C, AS PER PLAN	CONCRETE BARRIER, SINGLE SLOPE, TYPE D	BARRIER TRANSITION	BARRIER TRANSITION, AS PER PLAN A	BARRIER TRANSITION, AS PER PLAN B	CONCRETE BARRIER END SECTION, TYPE B	CONCRETE BARRIER END SECTION, TYPE D	CONCRETE BARRIER, END ANCHORAGE, REINFORCED, TYPE B	CONCRETE BARRIER, END ANCHORAGE, REINFORCED, TYPE BI	CONCRETE BARRIER, END ANCHORAGE, REINFORCED, TYPE C, AS PER PLAN	CONCRETE BARRIER, END ANCHORAGE, REINFORCED, TYPE D	BARRIER INLET	MEDIAN LIGHT POLE FOUNDATION	MEDIAN LIGHT TOWER FOUNDATION	MEDIAN SIGN SUPPORT	
		FROM	TO			SY	FT	EACH	EACH	EACH	FT	FT	FT	FT	FT	FT	EACH	EACH	EACH	EACH	EACH	EACH	EACH	EACH	20 FT EA	8 FT EA	10 FT EA	10 FT EA
		I.R. 76																										
375	GR1	454+39.50	455+00.00	LT	01/IMS/PV		62.5		1																			
375	GR2	454+13.10	455+00.00	RT	01/IMS/PV		62.5	1																				
375	CB1	455+00.00	455+30.59	LT	01/IMS/PV									1.6					1				1					
375	CB2	455+00.00	455+45.00	RT	01/IMS/PV									16.1					1				1					
375	CB3	455+30.59	458+50.00	LT	01/IMS/PV								270.5			1							1					
375	CB4	455+00.00	458+50.00	MED	01/IMS/PV								189.0		1								7		1	2		
375	CB5	455+45.00	458+50.00	RT	01/IMS/PV									206.0		1								3	2			
376	CB3	458+50.00	465+00.00	LT	01/IMS/PV									550.0										4	2			
376	CB4	458+50.00	468+50.00	MED	01/IMS/PV								737.0										11	3	1	2	1	
376	CB5	458+50.00	458+53.33	RT	01/IMS/PV									3.4														
378	CB4	468+50.00	473+44.36	MED	01/IMS/PV								354.4										6	2		1		
378	CB6	469+54.00	473+74.36	LT	01/IMS/PV																				4	2		
378	CB7	476+01.68	478+50.00	LT	01/IMS/PV																							
378	CB8	475+71.69	478+50.00	MED	01/IMS/PV								238.4											2			1	
378	CB9	475+30.90	478+50.00	RT	01/IMS/PV																							
378	EC1	473+33.27	474+13.55	RT/LT	01/IMS/PV	54.7																						
378	EC1A	473+33.27	474+13.55	RT/LT	01/IMS/PV	394.2																						
378	EC2	474+91.05	475+69.43	RT/LT	01/IMS/PV	53.1																						
378	EC2A	474+91.05	475+69.43	RT/LT	01/IMS/PV	263.8																						
379	CB7	478+50.00	479+88.75	LT	01/IMS/PV																							
379	CB8	478+50.00	479+59.45	MED	01/IMS/PV																							
379	CB9	478+50.00	479+24.92	RT	01/IMS/PV																							
379	CB10	482+64.18	482+65.98	LT	01/IMS/PV																							
379	CB11	482+34.88	488+50.00	MED	01/IMS/PV																							
379	CB29	482+65.98	483+55.36	LT	01/IMS/PV																							
379	CB12	483+55.36	488+50.00	LT	01/IMS/PV																							
379	C94	482+06.85	482+30.40	RT	01/IMS/PV					23.6																		
379	C95	482+30.40	483+07.31	RT	01/IMS/PV						76.9																	
379	EC3	479+53.32	480+28.15	RT/LT	01/IMS/PV	49.3																						
379	EC4	481+64.38	482+30.52	RT/LT	01/IMS/PV	47.5																						
381	CB11	488+50.00	498+50.00	MED	01/IMS/PV																							
381	CB12	488+50.00	489+80.37	LT	01/IMS/PV																							
381	CB13	489+90.45	490+23.43	LT	01/IMS/PV																							
381	CB14	489+80.37	491+55.00	LT	01/IMS/PV																							
381	CB15	490+60.00	491+36.00	RT	01/IMS/PV																							
381	CB16	490+23.43	493+64.33	LT	01/IMS/PV																							
381	CB17	491+36.00	495+16.76	RT	01/IMS/PV																							
381	CB18	493+64.33	498+50.00	LT	01/IMS/PV																							
381	CB19	495+16.76	498+50.00	RT	01/IMS/PV																							
	CB20	NOT USED																										
	CB21	NOT USED																										
381	EC4A	493+72.90	494+41.70	LT	01/IMS/PV	13.3																						
381	EC4B	495+20.52	495+87.79	RT	01/IMS/PV	10.5																						
382	CB11	498+50.00	507+19.85	MED	01/IMS/PV																							
382	CB18	498+50.00	501+65.00	LT	01/IMS/PV																							
382	CB19	498+50.00	507+19.85	RT	01/IMS/PV																							
	CB22	NOT USED																										
SUBTOTAL						886.4	125.0	1	1	1	23.6	76.9	579.8	3238.4	2401.9	2232.3	2	10	1	1	2	8	65	20	32			
SUBTOTAL (CARRIED TO SHEET 312 )						886	125.0	1	1	1	24	77	580	3238	2402	2232	2	10	1	1	2	8	65	20	32			

KMK	5/2/16	QTY REVISED-FROM B TO BI END ANCHORAGE	3
KMS	4/7/16	QTY REVISIONS PER CROSS SECTION REVISIONS	5
REV. BY	DATE	DESCRIPTION	
		DATE COMPLETED	

**ROADWAY SUBSUMMARY**

**SUM -76 -10.00**

CALCULATED  
BLW  
CHECKED  
WJC

304  
1822

I:\Projects\Main\_Broadway\Roadway\Sheets\726965010.dgn 5/3/2016 2:33:11 PM Kyle\_Koppes

SHEET NUMBER								PARTICIPATION	ITEM	GRAND TOTAL	UNIT	DESCRIPTION	SEE SHEET NO.
304	305	306	307	308	309	310	311	01/IMS/PV					
<i>ROADWAY</i>													
125.0	1662.5	150.0	275.0	137.5	12.5			2362.5	606	2362.5	FT	GUARDRAIL, TYPE MGS	
	200							200	606	200	FT	GUARDRAIL, TYPE MGS, 25' LONG-SPAN	
	2	2	1	2	1			8	606	8	EACH	ANCHOR ASSEMBLY, TYPE E	
	5		1	3				9	606	9	EACH	ANCHOR ASSEMBLY, TYPE T	
1	4	2	2	4	1			14	606	14	EACH	BRIDGE TERMINAL ASSEMBLY, TYPE 1	
1	3			1				5	606	5	EACH	BRIDGE TERMINAL ASSEMBLY, TYPE 2	
1								1	606	1	EACH	IMPACT ATTENUATOR, TYPE 3 UNIDIRECTIONAL	
	1							1	606	1	EACH	IMPACT ATTENUATOR, TYPE 3 UNIDIRECTIONAL, AS PER PLAN	
			4689		2198	1084	1110	9081	608	9081	SF	4" CONCRETE WALK	
		21297	20351	11735	11552	10275	1358	76568	608	76568	SF	6" CONCRETE WALK	
						7		7	608	7	FT	CONCRETE STEPS, TYPE A	
		1284	1879	1096	2708	391		7358	608	7358	SF	CURB RAMP, AS PER PLAN A	
				345				345	608	345	SF	CURB RAMP, AS PER PLAN B	
			552			367	196	1115	608	1115	SF	CURB RAMP, AS PER PLAN C	
			317				1317	1634	608	1634	SF	CURB RAMP, AS PER PLAN D	
			204		457			661	608	661	SF	CURB RAMP, AS PER PLAN E	
			88	189			138	415	608	415	SF	CURB RAMP, AS PER PLAN F	
			356	210				566	608	566	SF	CURB RAMP, TYPE B1	
		9220	11708	2010	7843	4585	447	35813	608	35813	SF	WALKWAY, MISC.: 6" DECORATIVE CONCRETE WALK	
						941		941	608	941	SF	WALKWAY, MISC.: 8" DECORATIVE CONCRETE WALK	
580			92					672	622	672	FT	CONCRETE BARRIER, SINGLE SLOPE, TYPE B	
3238								3238	622	3238	FT	CONCRETE BARRIER, SINGLE SLOPE, TYPE B1	
2402	287	686						3375	622	3375	FT	CONCRETE BARRIER, SINGLE SLOPE, TYPE C, AS PER PLAN	
2232	1170	93	288					3783	622	3783	FT	CONCRETE BARRIER, SINGLE SLOPE, TYPE D	
			456					456	622	456	FT	CONCRETE BARRIER, SINGLE SLOPE, TYPE D, AS PER PLAN A	
			20					20	622	20	FT	CONCRETE BARRIER, SINGLE SLOPE, TYPE D, AS PER PLAN B	
					12			12	622	12	FT	CONCRETE BARRIER, SINGLE SLOPE, TYPE D, AS PER PLAN C	
2								2	622	2	EACH	BARRIER TRANSITION	
10		2						12	622	12	EACH	BARRIER TRANSITION, AS PER PLAN A	
1								1	622	1	EACH	BARRIER TRANSITION, AS PER PLAN B	
			1					1	622	1	EACH	BARRIER TRANSITION, AS PER PLAN C	
1								1	622	1	EACH	CONCRETE BARRIER END SECTION, TYPE B	
2	2	1						5	622	5	EACH	CONCRETE BARRIER END SECTION, TYPE D	
8								8	622	8	EACH	CONCRETE BARRIER, END ANCHORAGE, REINFORCED, TYPE B	
65								65	622	65	EACH	CONCRETE BARRIER, END ANCHORAGE, REINFORCED, TYPE B1	
20	2	4						26	622	26	EACH	CONCRETE BARRIER, END ANCHORAGE, REINFORCED, TYPE C, AS PER PLAN	
32	11	5	4					52	622	52	EACH	CONCRETE BARRIER, END ANCHORAGE, REINFORCED, TYPE D	
			7					7	622	7	EACH	CONCRETE BARRIER, END ANCHORAGE, REINFORCED, TYPE D, AS PER PLAN	
<i>EROSION CONTROL</i>													
	1264							1264	601	1264	SY	CRUSHED AGGREGATE SLOPE PROTECTION	
886	1544	389	1026	24				3869	601	3869	SY	CONCRETE SLOPE PROTECTION	
<i>PAVEMENT</i>													
						971		971	609	971	FT	COMBINATION CURB AND GUTTER, TYPE 2	
						101		101	609	101	FT	COMBINATION CURB AND GUTTER, TYPE 2, AS PER PLAN	
	764	526		216	1093		140	2739	609	2739	FT	CURB, TYPE 2-A	
						238		238	609	238	FT	COMBINATION CURB AND GUTTER, TYPE 3, AS PER PLAN A	
						251		251	609	251	FT	COMBINATION CURB AND GUTTER, TYPE 3, AS PER PLAN B	
24	179	35						238	609	238	FT	CURB, TYPE 4-A	
77	69							146	609	146	FT	CURB, TYPE 4-C	
		8463	8722	1806	3348	1975	438	24752	609	24752	FT	CURB, TYPE 6	
			391		107			498	609	498	FT	CURB, TYPE 7	
NOTE: TOTALS CARRIED TO GENERAL SUMMARY													

KMK	5/2/16	QTY REVISED-FROM B TO BI END ANCHORAGE
KMS	4/7/16	QUANTITIES UPDATED PER CROSS SECTION REVISIONS
REV. BY	DATE	DESCRIPTION
	DATE COMPLETED	

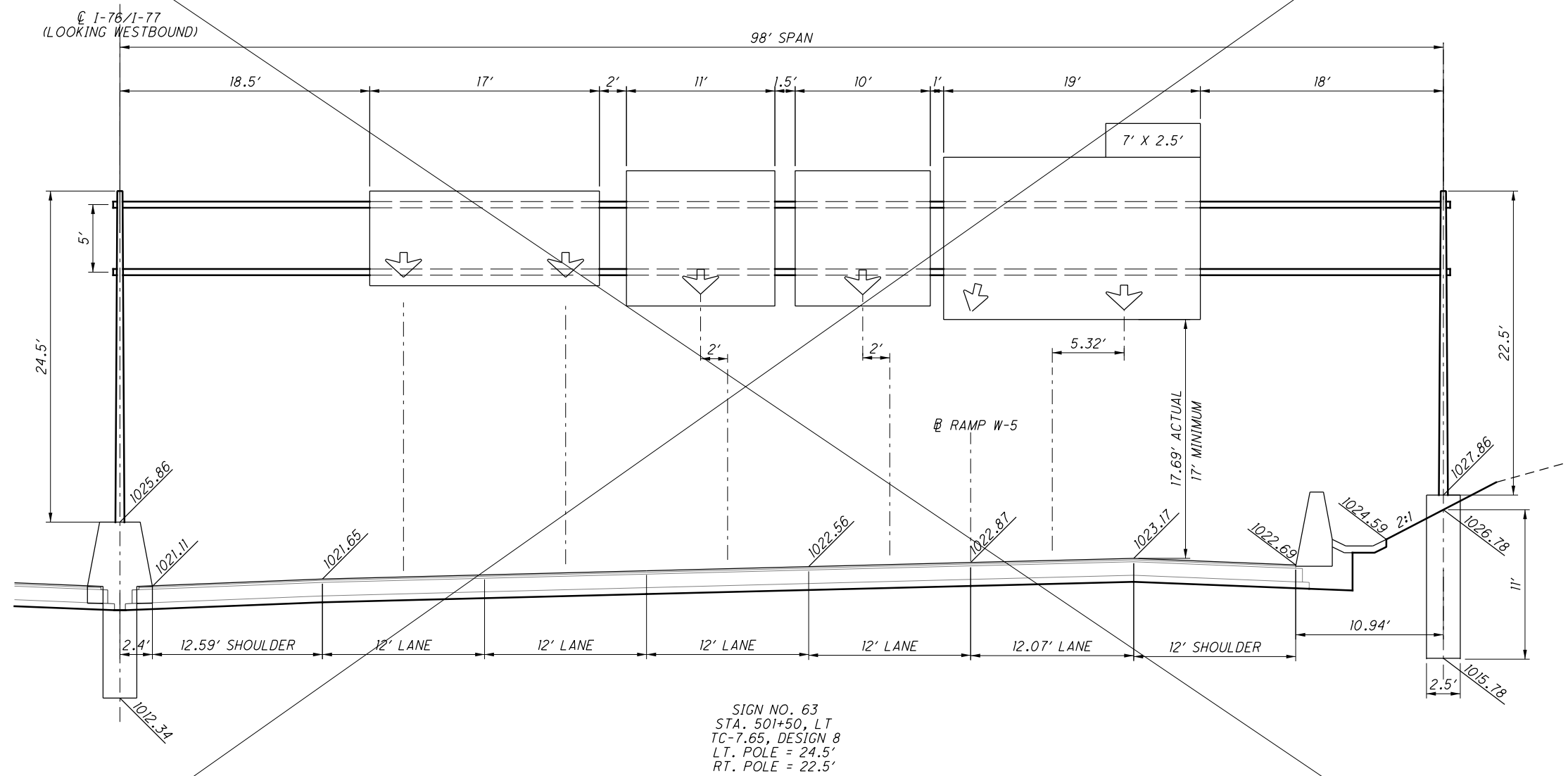
**ROADWAY SUBSUMMARY**

**SUM - 76 - 10.00**

CALCULATED  
BLW  
CHECKED  
WJC

312  
1822

# SHEET NOT USED



I:\Projects\Main\_Broadway\Traffic\Sheets\77269TD016A.dgn 5/2/2016 4:51:23 PM kyle\_koppes

CALCULATED	TKI
CHECKED	JMB

SIGN ELEVATION VIEWS  
I-76 / I-77

SUM-76-10.00

1128  
1822

I:\Projects\Main\_Broadway\STRUCTURES\Wall\_01\Sheets\77269WIEQ002.dgn 4/28/2016 11:32:11 AM Kyle\_koppes

ITEM ODOT	EXT.	PARTICIPATION	TOTAL	UNIT	DESCRIPTION	MSE WALL 1	WALL 2	MSE WALL 3	MSE WALL 4	MSE WALL 5	MSE WALL 6	MSE WALL 7	MSE WALL 8	WALL 9	WALL 10	WALL 11	MODULAR BLOCK WALL	REF. SHEET
		02/IMS/BR																
517	75120	416	416	FT	RAILING (CONCRETE PARAPET WITH TWIN STEEL TUBE RAILING)									416				
517	76300	124	124	FT	RAILING, MISC.: REATTACH EXISTING HANDRAIL		124											(1626) (1822)
518	21200	298	298	CY	POROUS BACKFILL WITH FILTER FABRIC									26	272			
518	40000	730	730	FT	6" PERFORATED CORRUGATED PLASTIC PIPE									416	314			
518	40010	61	61	FT	6" NON-PERFORATED CORRUGATED PLASTIC PIPE, INCLUDING SPECIALS									50	11			
524	94703	445	445	FT	DRILLED SHAFTS, 36" DIAMETER, ABOVE BEDROCK, AS PER PLAN									445				(1676) (1822)
524	94803	405	405	FT	DRILLED SHAFTS, 42" DIAMETER, ABOVE BEDROCK, AS PER PLAN									405				(1676) (1822)
524	94903	465	465	FT	DRILLED SHAFTS, 48" DIAMETER ABOVE BEDROCK, AS PER PLAN									465				(1676) (1822)
524	94915	609	609	FT	DRILLED SHAFTS, 60" DIAMETER, ABOVE BEDROCK, AS PER PLAN									609				(1676) (1822)
524	94919	136	136	FT	DRILLED SHAFTS, 60" DIAMETER, INTO BEDROCK, AS PER PLAN									136				(1676) (1822)
SPECIAL	53013000	6,720	6,720	SF	FORM LINER									6720				(1616) (1822)
601	37500	380	380	FT	PAVED GUTTER, TYPE 1-2			79	96	60	42		103					
607	39920	559	559	FT	VANDAL PROTECTION FENCE, 10' CURVED, COATED FABRIC					394		165						
SPECIAL	61050010	309	309	SF	RETAINING WALL, MISC.: MODULAR CONCRETE BLOCK WALL												309	(845) (1822)
SPECIAL	61060000	LS	LS		RETAINING WALL, MISC.: TEMPORARY WIRE FACED MSE WALL			LS	LS		LS	LS						(1617) (1822) & (1618) (1822)
840	20000	80,889	80,889	SF	MECHANICALLY STABILIZED EARTH WALL	6488		4336	4977	9997	13849	34024	4900					
840	21000	27,900	27,900	CY	WALL EXCAVATION	1625		2926	5448	2175	4627	8915	1558					
840	22000	8,079	8,079	SY	FOUNDATION PREPARATION	750		798	804	1088		3720	641					
840	22001	1,735	1,735	SY	FOUNDATION PREPARATION, AS PER PLAN						1735							(1649) (1822)
840	23000	60,848	60,848	CY	SELECT GRANULAR BACKFILL	2582		3854	4322	4909	10891	27628	5536					
840	25010	8,222	8,222	FT	6" DRAINAGE PIPE, PERFORATED	920		586	578	1150	1340	2821	462					
840	25020	471	471	FT	6" DRAINAGE PIPE, NON-PERFORATED	25		52	45	60	133	77	10					
840	26000	4,166	4,166	FT	CONCRETE COPING	450		295	300	593	653	1448	246					
840	26050	80,889	80,889	SF	AESTHETIC SURFACE TREATMENT	6488		4336	4977	9997	13849	34024	4900					
840	27000	13	13	DAY	ON-SITE ASSISTANCE	1		2	2	1	2	3	1					
840	28000	LS	LS		SGB INSPECTION AND COMPACTION TESTING	LS		LS	LS	LS	LS	LS	LS					

DEB	4/28/16	DRILLED SHAFTS, 60" DIAMETER - QUANTITIES REVISED
DEB	4/21/16	FORM LINER QUANTITY REVISION
REV. BY	DATE	DESCRIPTION
DATE COMPLETED		

**WALL 9 CURVE 2 DATA**

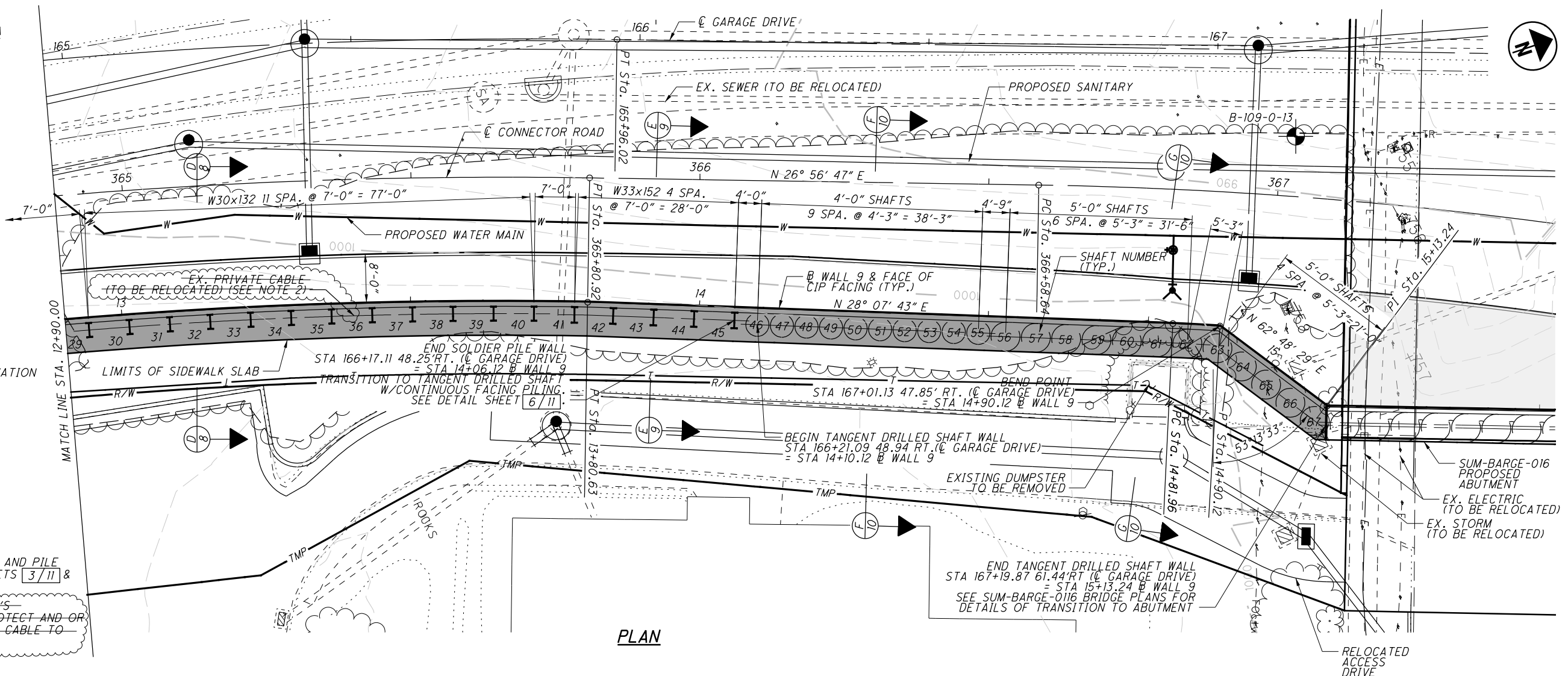
P.I. Sta. 14+86.04  
 $\Delta = 0^\circ 37' 56''$  (RT)  
 $Dc = 7^\circ 44' 52''$   
 $R = 740.09'$   
 $T = 4.08'$   
 $L = 8.16'$   
 $E = 0.01'$   
 $C = -8.17'$   
 $C.B. = N 29^\circ 05' 20'' E$

**LEGEND:**

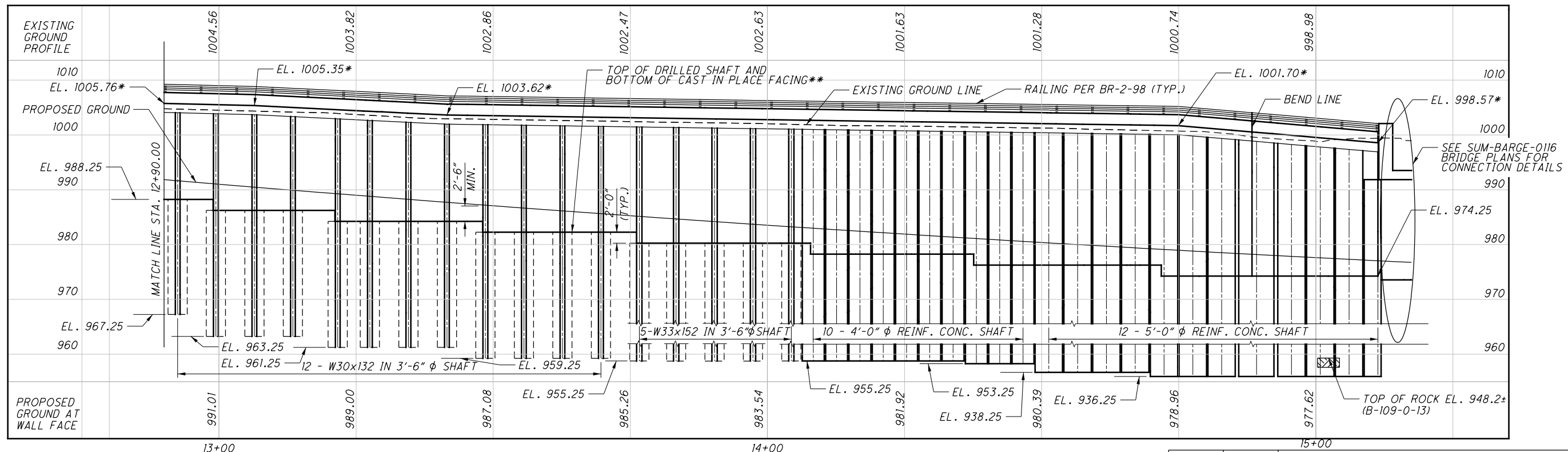
- PROJECT BORING LOCATION
- \* TOP OF SIDEWALK ELEVATION
- \*\* SEE SHEET 4/11

**NOTE:**

1. FOR ADDITIONAL NOTES AND PILE INFORMATION, SEE SHEETS 3/11 & 4/11
2. IT IS THE CONTRACTOR'S RESPONSIBILITY TO PROTECT AND OR RELOCATE THE PRIVATE CABLE TO REMAIN.



**PLAN**



**PROFILE**

(ALONG  $\bar{C}$  WALL 9 LOOKING EAST)

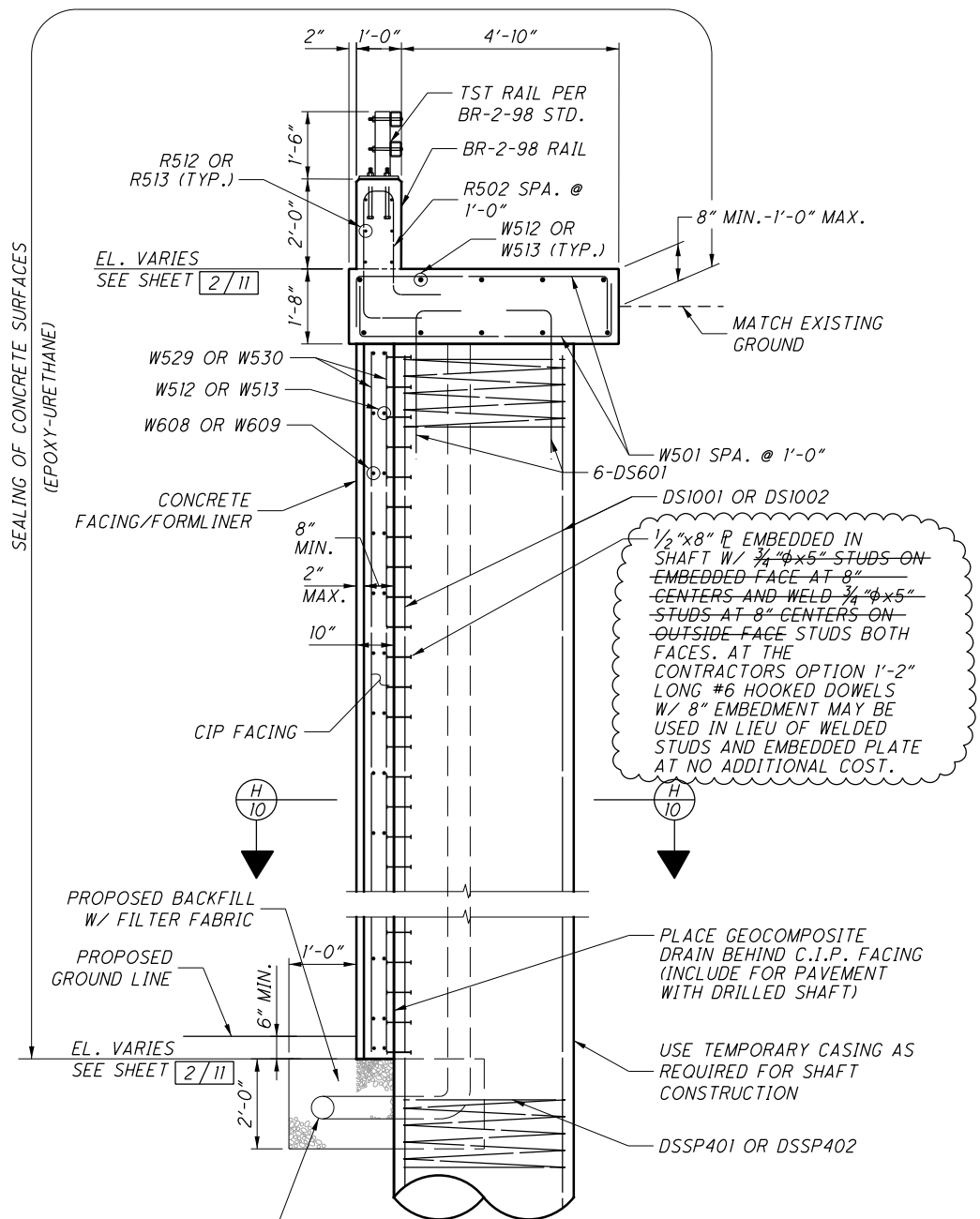
REV. BY	DATE	DESCRIPTION
KMK	4/29/16	EX. CTV CALL OUT/NOTE 2 DELETED

DESIGN AGENCY: ARKON CLEVELAND COLUMBUS  
 584 WHITE POND DRIVE  
 ARKON, OHIO 44320-1000  
 (330) 266-3111  
**URS**  
 DATE: 11/14  
 REVIEWED: BKL  
 DRAWN: ERM  
 DESIGNED: DEB  
 CHECKED: TES  
 SUMMIT COUNTY  
 STA. 10+97.97  
 STA. 15+13.24  
**SITE PLAN - 2 OF 2**  
 WALL 09  
 ALONG CONNECTOR ROAD AND GARAGE DRIVE  
**SUM-76-10.00**  
 PID No. 77269  
 2 / 11  
 1675  
 1822

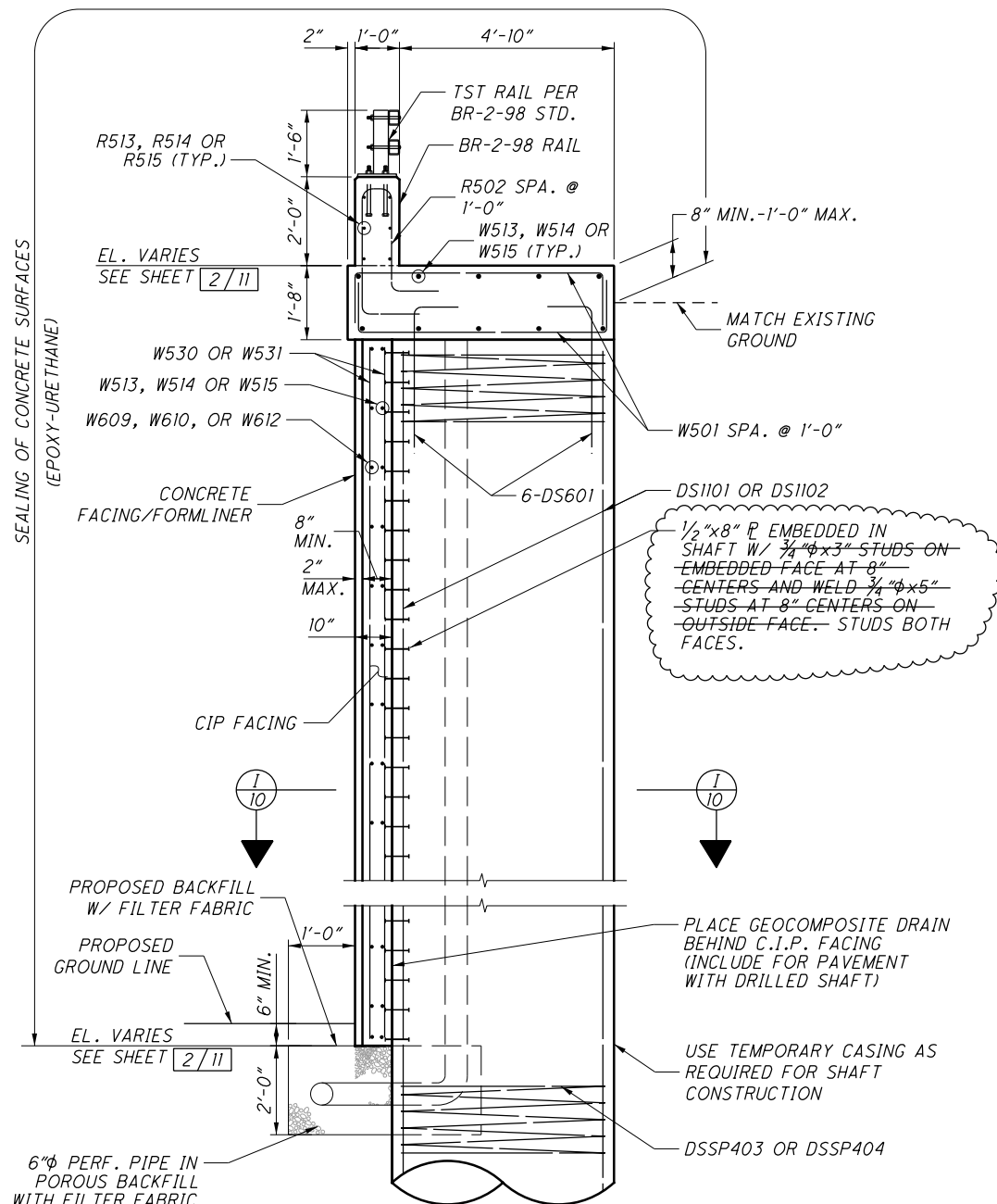
I:\Projects\Main\_Broadway\STRUCTURES\Wall\_09\Sheets\77269W9WP002.dgn 4/29/2016 11:12:19 AM kyle\_koppes



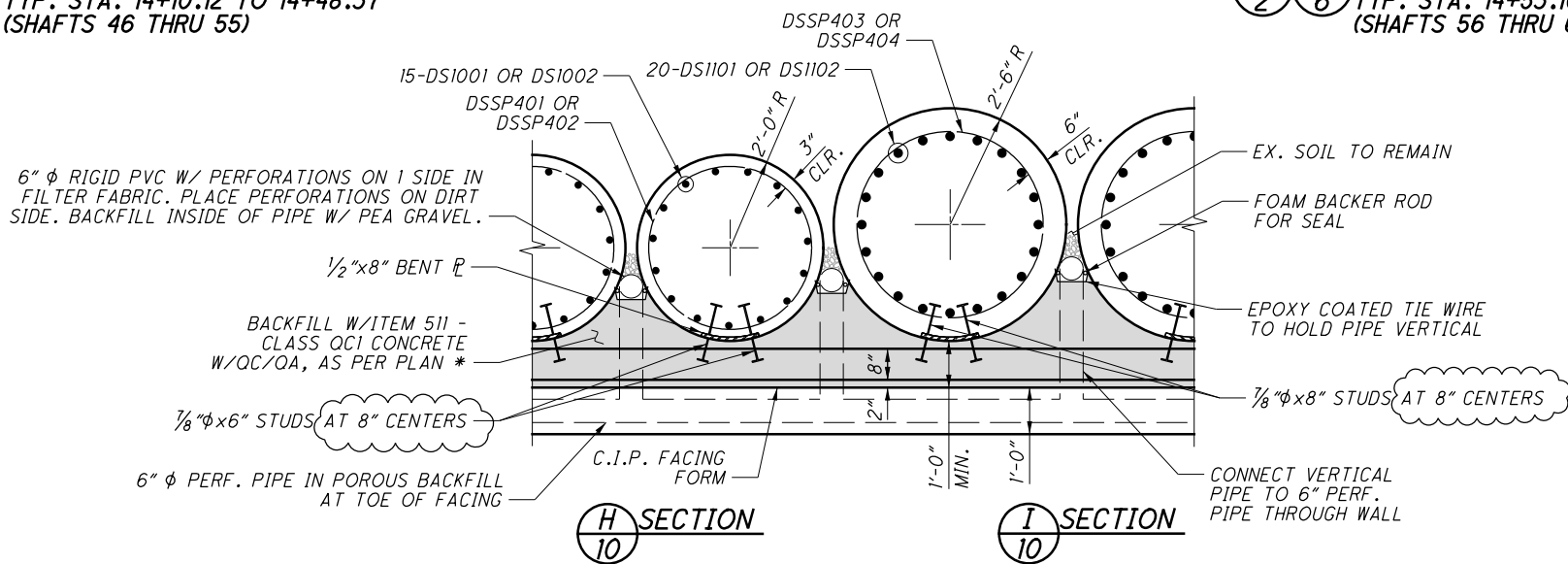
I:\Projects\Main\_Broadway\STRUCTURES\Wall\_09\Sheets\77269W9WD004.dgn 5/4/2016 9:03:36 AM kyle\_koppes



**F F SECTION**  
 2 6 TYP. STA. 14+10.12 TO 14+48.37  
 (SHAFTS 46 THRU 55)



**G G SECTION**  
 2 6 TYP. STA. 14+53.10 TO 15+13.06  
 (SHAFTS 56 THRU 67)



**H SECTION**  
 10

**I SECTION**  
 10

**LEGEND:**  
 \* REBAR IN FACING NOT SHOWN FOR CLARITY

- NOTES:**
1. MINIMUM REINFORCING BAR LAPS ARE AS FOLLOWS:  
 #5 = 2'-11"  
 #6 = 3'-5"
  2. MINIMUM CLEARANCE TO REBAR SHALL BE 2" UNLESS NOTED OTHERWISE.
  3. FOR ADDITIONAL NOTES AND PILE INFORMATION, SEE SHEETS 3/11 & 4/11.

DESIGNED	DATE	DESCRIPTION
DRAWN	BKL	11/14
ERM	STRUCTURE FILE NUMBER	N/A
DEB	REVISED	TES
CHECKED	DATE COMPLETED	
5/4/16	WALL #9 STUD DIMENSIONS REVISED	

DESIGN AGENCY: AKRON, CLEVELAND, COLUMBUS, OHIO  
 584 WHITE POND DRIVE  
 AKRON, OHIO 44310-1100  
 (330) 836-9800

**URS**

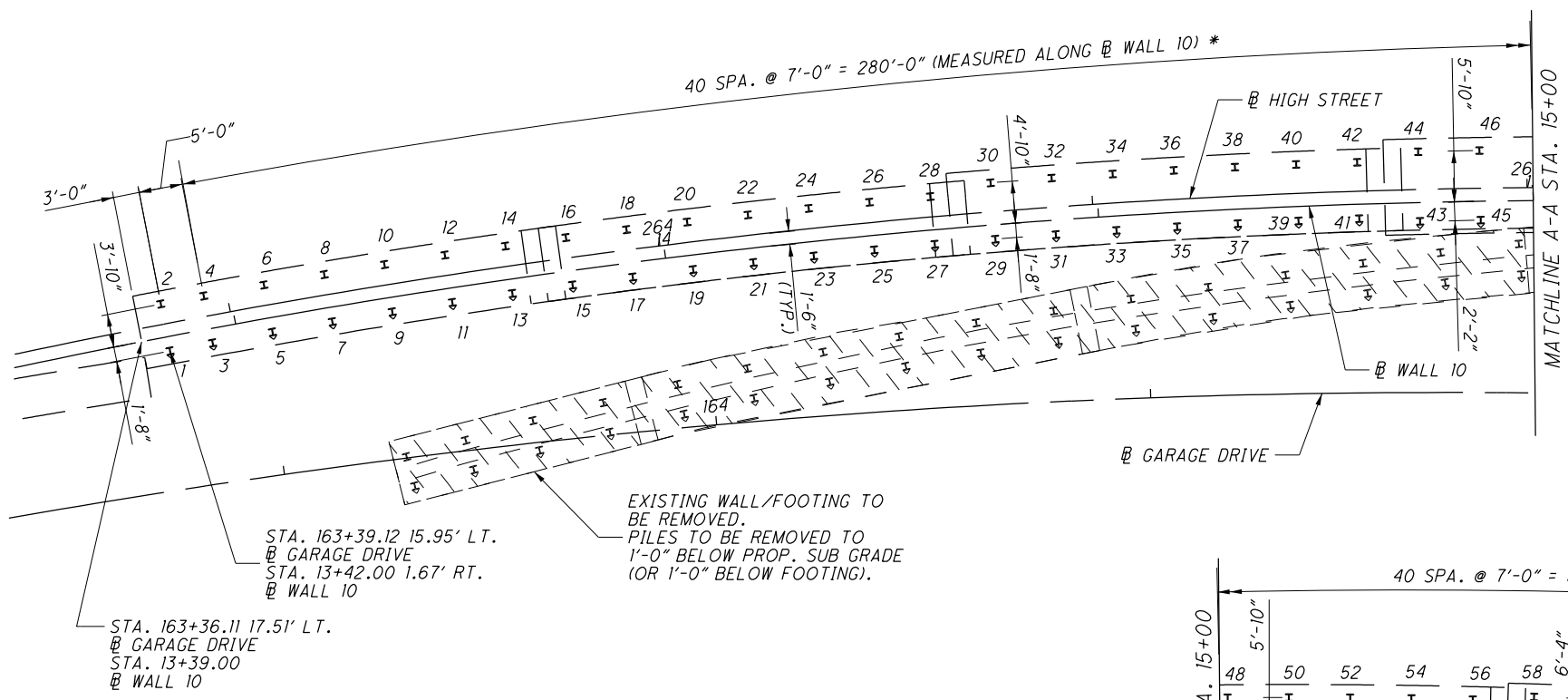
WALL DETAILS  
 WALL 09  
 ALONG CONNECTOR ROAD AND GARAGE DRIVE

SUM-76-10.00  
 PID No. 77269

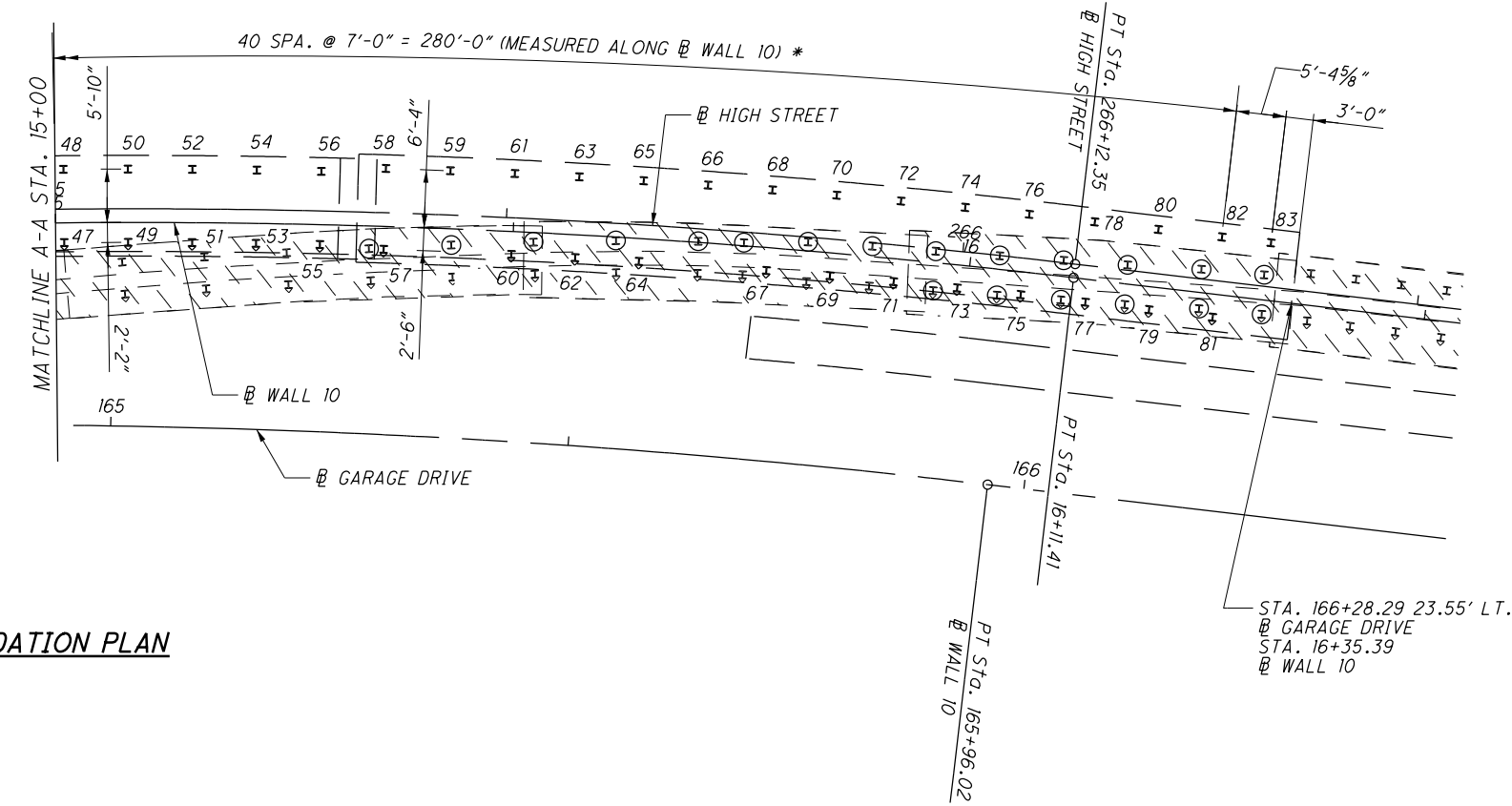
10/11

1683  
 1822

KMK	5/2/16	SECTION MODULUS REVISED
REV. BY	DATE	DESCRIPTION
DATE COMPLETED		



EXISTING WALL/FOOTING TO BE REMOVED.  
PILES TO BE REMOVED TO 1'-0" BELOW PROP. SUB GRADE (OR 1'-0" BELOW FOOTING).



**FOUNDATION PLAN**

PILING TABLE			
PILE NO.	PILE CUTOFF ELEVATION	EST. PILE TIP ELEVATION	ESTIMATED LENGTH
1-14	995.75	960.0±	40'
15-28	992.50	958.0±	35'
29-42	989.25	958.0±	35'
43-56	986.00	948.0±	40'
57-83	983.00	948.0±	35'

**LEGEND:**

- ⊠ - PROPOSED H PILE
- ⊠ - PROPOSED H PILE BATTERED 3:1 IN DIRECTION SHOWN
- # - PILE IDENTIFICATION NUMBER
- = DENOTES EX. PILE TO BE INCORPORATED IN PROPOSED FOOTING, SEE SHEET 3/12 FOR NOTES.
- LIMITS OF EXISTING WALL AND FOOTING REMOVAL
- \* PILE SPACING MEASURED RADIALLY ALONG BASELINE

**NOTES:**

1. ALL PROPOSED PILES SHALL BE HP 10x42.
2. LOCATION OF THE EXISTING PILES ARE BASED ON THE EXISTING PLANS. THESE LOCATIONS SHOULD BE CONSIDERED APPROXIMATE AND SHALL BE FIELD VERIFIED PRIOR TO CONSTRUCTION.
3. THE EXISTING STRUCTURE SHALL BE REMOVED AS PER ODOT ITEM 202 EXCEPT WHERE COMPLETE REMOVAL IS NECESSARY TO AVOID CONFLICT WITH THE PROPOSED STRUCTURE. PAYMENT FOR ALL STRUCTURE REMOVAL SHALL BE INCLUDED WITH ITEM 202 - PORTIONS OF STRUCTURE REMOVED AS PER PLAN.
4. PILE CUT OFF ELEVATION EQUALS THE BOTTOM OF FOOTING PLUS 1'-0" EMBEDMENT.
5. FOR ADDITIONAL PILE INFORMATION, SEE WALL GENERAL NOTES SHEETS 1616 THRU 1618.
6. INCORPORATE EXISTING PILES INTO PROPOSED FOOTING WHERE SHOWN BASED ON EXISTING ELEVATIONS AND MIN. DISTANCE OF 1'-6" FROM CENTER OF PILE TO EDGE OF FOOTING, AS SHOWN IN THE FOUNDATION PLAN.
7. PROPOSED PILES MAY BE ADJUSTED 1'-0" MAXIMUM LATERALLY TO AVOID INTERFERENCE WITH EXISTING PILES. NOTIFY THE ENGINEER OF ADJUSTMENTS EXCEEDING 1'-0" FOR HIS APPROVAL PRIOR TO DRIVING PILES.

**TEMPORARY SHORING NOTES:**

1. SHEET PILING FOR TEMPORARY SHORING AT WALL 10 SHALL BE ASTM A572 GR 50 STEEL WITH A MINIMUM SECTION MODULUS OF 69.3 IN<sup>3</sup>/FT. A MINIMUM EMBEDMENT OF 30.0' BELOW THE BOTTOM OF EXCAVATION AND A MAXIMUM RETAINED HEIGHT OF 20.5'.
2. LIMITS OF THE TEMPORARY SHORING SHALL AT A MINIMUM BE AS SHOWN IN THE PLAN VIEW.
3. THE DESIGN SHOWN ON THE PLANS FOR TEMPORARY SUPPORT OF EXCAVATION IS ONE REPRESENTATIVE DESIGN THAT MAY BE USED TO CONSTRUCT THE PROJECT. THE CONTRACTOR MAY CONSTRUCT THE DESIGN SHOWN ON THE PLANS OR PREPARE AN ALTERNATE DESIGN TO SUPPORT THE SIDES OF EXCAVATIONS. IF CONSTRUCTING AN ALTERNATE DESIGN FOR TEMPORARY SUPPORT OF EXCAVATION, PREPARE AND PROVIDE PLANS IN ACCORDANCE WITH C&MS 501.05. THE DEPARTMENT WILL PAY FOR THE TEMPORARY SUPPORT OF EXCAVATION AT THE CONTRACT LUMP SUM PRICE FOR COFFERDAMS AND EXCAVATION BRACING, AS PER PLAN. NO ADDITIONAL PAYMENT WILL BE MADE FOR PROVIDING AN ALTERNATE DESIGN.

DESIGN AGENCY  
AKRON CLEVELAND COLUMBUS  
**URS**  
554 WHITE POND DRIVE  
AKRON, OHIO 44320-1000  
330.926.3911

DESIGNED	SAM	CHECKED	DRC
DRAWN	DEB	REVISED	
REVIEWED	BKL	STRUCTURE FILE NUMBER	N/A
DATE	11/14		

**FOUNDATION PLAN**  
WALL 10  
ALONG GARAGE DRIVE AND HIGH STREET

**SUM - 76 - 10.00**  
PID No. 77269

4 / 12

1688  
1822

I:\Projects\Main\_Broadway\STRUCTURES\Wall\_10\Sheets\77269W10WEP001.dgn 5/3/2016 2:48:49 PM Kyle\_Koppes