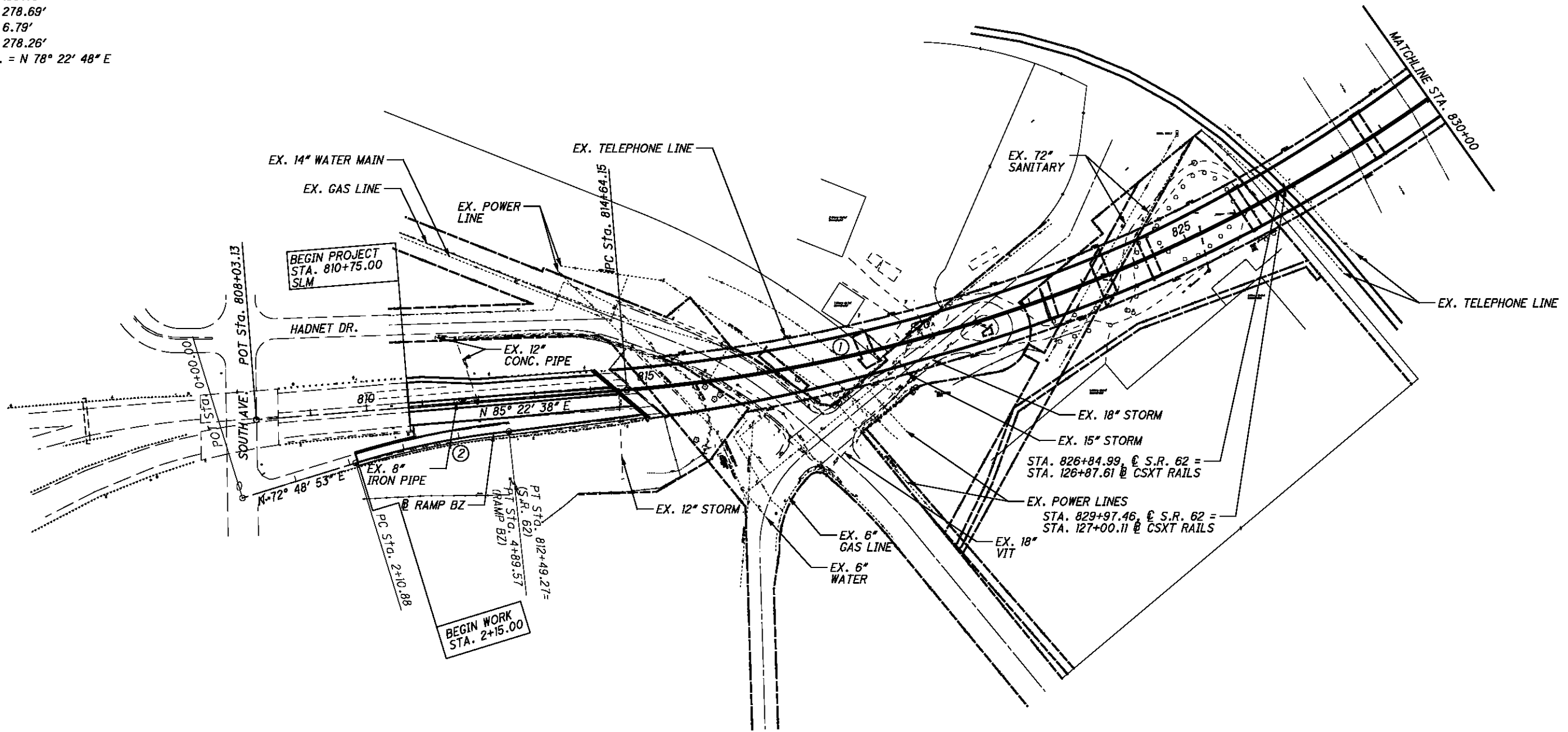


① CURVE USR 62-1  
 P.I. Sta. 823+62.86  
 $\Delta = 34^\circ 50' 02''$  (LT)  
 $Dc = 2^\circ 00' 00''$   
 $R = 2,864.79'$   
 $T = 898.70'$   
 $L = 1,741.69'$   
 $E = 137.66'$   
 $C = 1,714.99'$   
 $C.B. = N 67^\circ 57' 37'' E$

② CURVE RAMP BZ-1  
 P.I. Sta. 3+50.67  
 $\Delta = 11^\circ 07' 50''$  (RT)  
 $Dc = 3^\circ 59' 38''$   
 $R = 1,434.61'$   
 $T = 139.79'$   
 $L = 278.69'$   
 $E = 6.79'$   
 $C = 278.26'$   
 $C.B. = N 78^\circ 22' 48'' E$

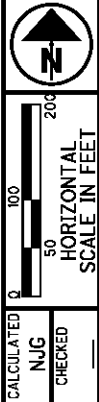


MONUMENT TABLE

MON. NO.	STATION/OFFSET	NORTHING/WESTING	DESCRIPTION	ALIGNMENT
R104	STA. 810+44.82, 34.03' RT.	N 524905.863 / W 2479907.462	1" PIN IN MON. BOX FD.	S.R. 62
R105	STA. 811+99.27, 34.00' RT.	N 524918.342 / W 2480061.409	1" PIN IN MON. BOX FD. & USED	S.R. 62
R106	STA. 4+89.57, 2.00' RT.	N 524897.502 / W 2480113.310	1" PIN IN MON. BOX FD. & USED	RAMP BZ
R107	STA. 2+10.88, 2.00' RT.	N 524841.533 / W 2479841.135	1" PIN IN MON. BOX FD. & USED	RAMP BZ
R108	STA. 840+56.02, 4.75' LT	N 526179.110 / W 2482547.863	1" PIN IN MON. BOX FD.	S.R. 62
R1005	STA. 836+56.79, 5.00' LT	N 525907.558 / W 2482257.353	3/4" REBAR SET INSIDE ROUND MON. BOX	S.R. 62
R1006	STA. 810+44.82, 5.00' LT.	N 524944.763 / W 2479904.3167	1" PIN IN MON. BOX FD. & USED	S.R. 62

BENCHMARKS

BM NO.	STATION/OFFSET	ELEVATION	DESCRIPTION
T-1	STA. 840+97.24, 134.62' RT.	907.80	CAPPED IRON PIN "ODOT DIST 4"
T-4	STA. 809+64.57, 43.06' RT.	901.09	SPIKE IN ASPHALT
#2000	STA. 810+70.65, 47.60' RT.	898.75	CHISELED SQUARE AT S.E. CORNER OF CONCRETE LIGHT BASE
#2006	STA. 836+89.05, 81.66' RT.	891.61	CHISELED SQUARE AT N.W. CORNER OF CONCRETE LIGHT BASE



SCHEMATIC PLAN  
 STA. 808+03.13 TO STA. 830+00.00

MAH-62-18.23