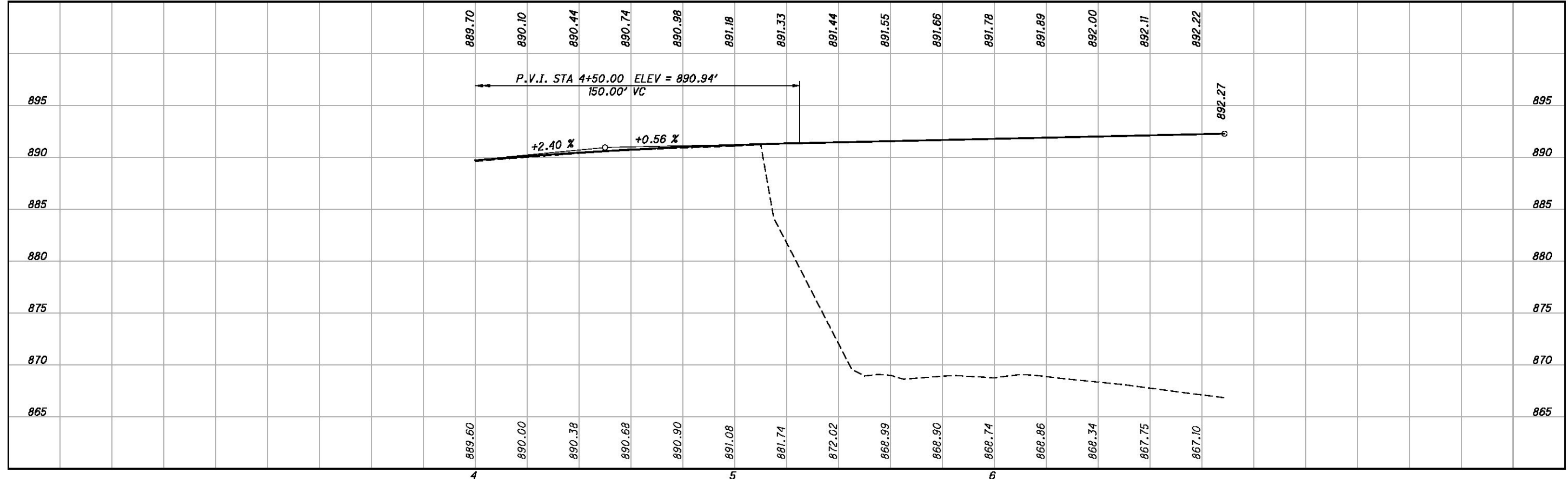
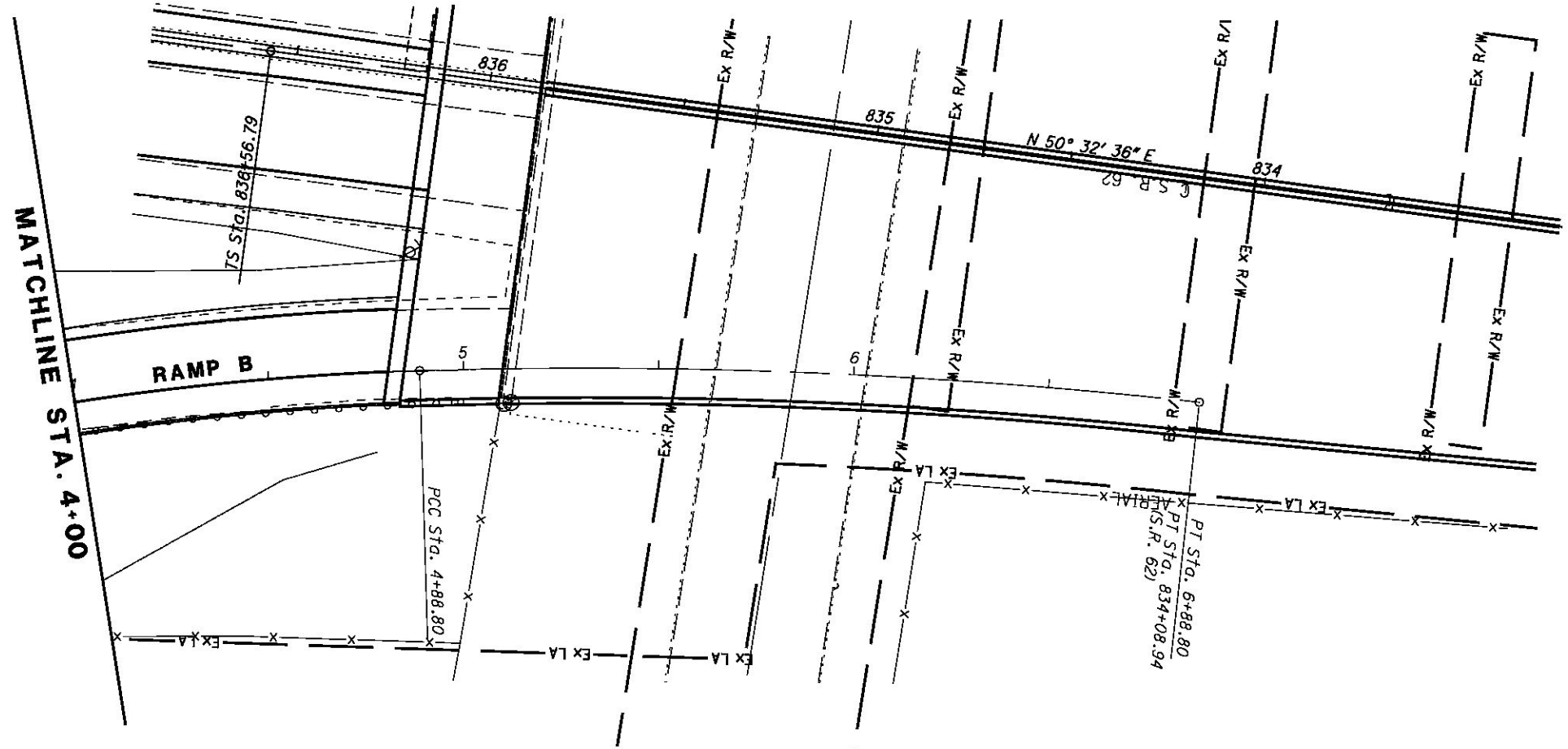


P.I. Sta. 4+14.08  
 $\Delta = 12^\circ 00' 00''$  (RT)  
 $Dc = 8^\circ 00' 00''$   
 $R = 716.20'$   
 $T = 75.28'$   
 $L = 150.00'$   
 $E = 3.95'$   
 $C = 149.73'$   
 $C.B. = S 35^\circ 06' 42'' W$

P.I. Sta. 5+88.96  
 $\Delta = 8^\circ 00' 00''$  (RT)  
 $Dc = 4^\circ 00' 00''$   
 $R = 1,432.39'$   
 $T = 100.16'$   
 $L = 200.00'$   
 $E = 3.50'$   
 $C = 199.84'$   
 $C.B. = S 45^\circ 06' 42'' W$



**PLAN AND PROFILE**  
**RAMP B, STA. 4+00 TO STA. 6+88.80**

**MAH-62-18.23**

CALCULATED JTP  
 CHECKED NJG