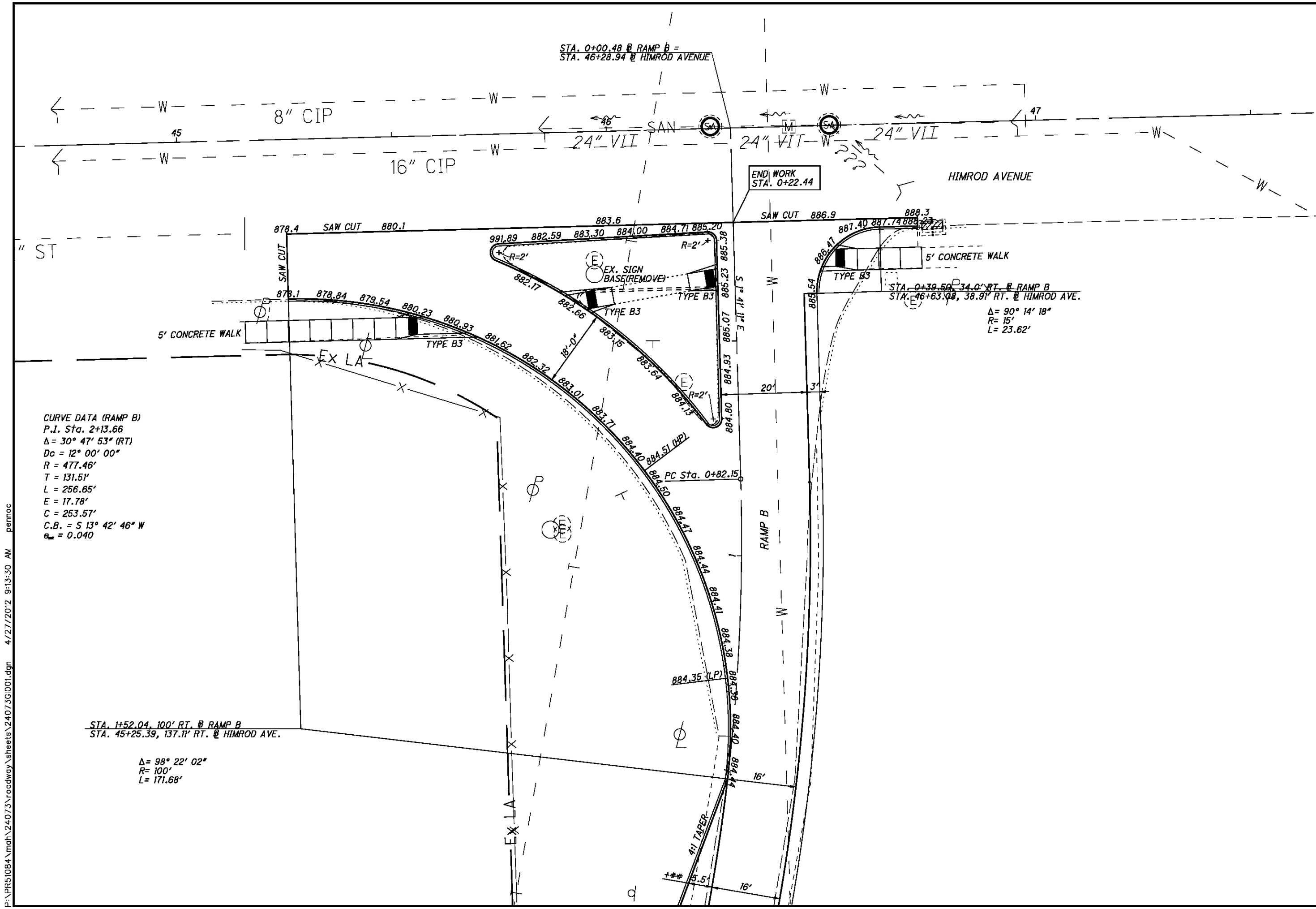


CALCULATED
NUG
CHECKED

**INTERSECTION DETAIL
HIMROD AVE. AND RAMP B**

MAH-62-18.23



STA. 0+00.48 @ RAMP B =
STA. 46+28.94 @ HIMROD AVENUE

END WORK
STA. 0+22.44

STA. 0+39.50 @ 34.0' RT. @ RAMP B
STA. 46+63.08, 38.91' RT. @ HIMROD AVE.

$\Delta = 90^\circ 14' 18''$
 $R = 15'$
 $L = 23.62'$

CURVE DATA (RAMP B)
P.I. Sta. 2+13.66
 $\Delta = 30^\circ 47' 53''$ (RT)
 $D_c = 12^\circ 00' 00''$
 $R = 477.46'$
 $T = 131.51'$
 $L = 256.65'$
 $E = 17.78'$
 $C = 253.57'$
C.B. = S $13^\circ 42' 46''$ W
 $e_m = 0.040$

STA. 1+52.04, 100' RT. @ RAMP B
STA. 45+25.39, 137.11' RT. @ HIMROD AVE.

$\Delta = 98^\circ 22' 02''$
 $R = 100'$
 $L = 171.68'$

P:\PR51084\mah\24073\roadway\sheets\24073\001.dgn 4/27/2012 9:13:30 AM pennoc