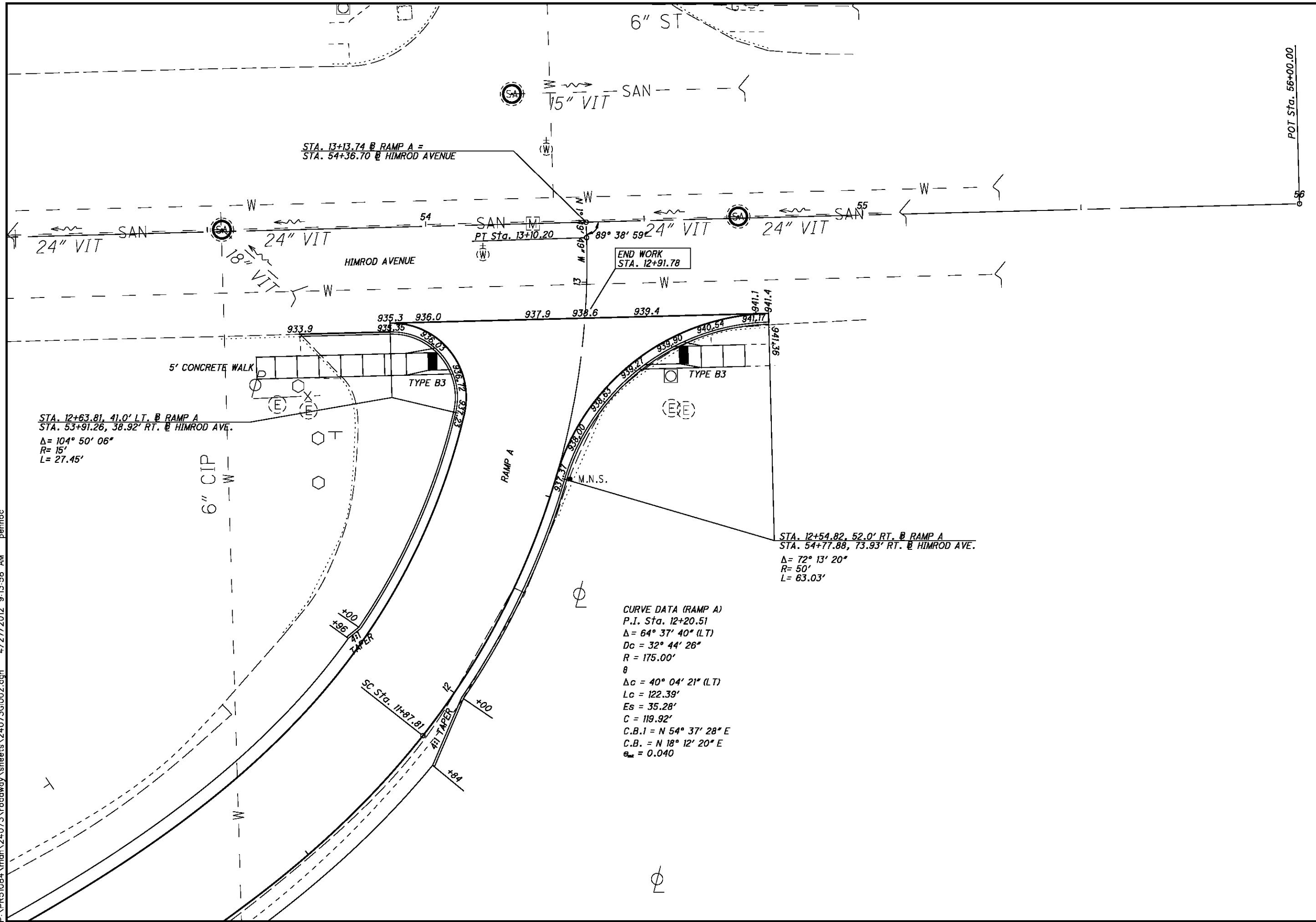


P:\PR51084\mah\24073\roadway\sheets\24073g002.dgn 4/27/2012 9:13:58 AM pemoc



STA. 13+13.74 @ RAMP A =  
STA. 54+36.70 @ HIMROD AVENUE

STA. 12+63.81, 41.0' LT. @ RAMP A  
STA. 53+91.26, 38.92' RT. @ HIMROD AVE.  
 $\Delta = 104^\circ 50' 06''$   
 $R = 15'$   
 $L = 27.45'$

STA. 12+54.82, 52.0' RT. @ RAMP A  
STA. 54+77.88, 73.93' RT. @ HIMROD AVE.  
 $\Delta = 72^\circ 13' 20''$   
 $R = 50'$   
 $L = 63.03'$

CURVE DATA (RAMP A)  
P.I. Sta. 12+20.51  
 $\Delta = 64^\circ 37' 40''$  (LT)  
 $Dc = 32^\circ 44' 26''$   
 $R = 175.00'$   
 $\theta$   
 $\Delta c = 40^\circ 04' 21''$  (LT)  
 $Lc = 122.39'$   
 $Es = 35.28'$   
 $C = 119.92'$   
C.B.1 = N  $54^\circ 37' 28''$  E  
C.B. = N  $18^\circ 12' 20''$  E  
 $e_s = 0.040$

CALCULATED  
NUG  
CHECKED

0 5 10 20  
HORIZONTAL  
SCALE IN FEET

**INTERSECTION DETAILS  
HIMROD AVE. AND RAMP A**

**MAH-62-18.23**